

405 RDP

PWO:405.1:JJ:sj
11300

04 7/11

16 SEP 1982

From: Commanding General
To: Commander, Atlantic Division, Naval Facilities Engineering Command,
Norfolk, VA 23511

Subj: Easement and Joint Use Agreement for Carolina Power and Light Company
23 KV Distribution Feeder

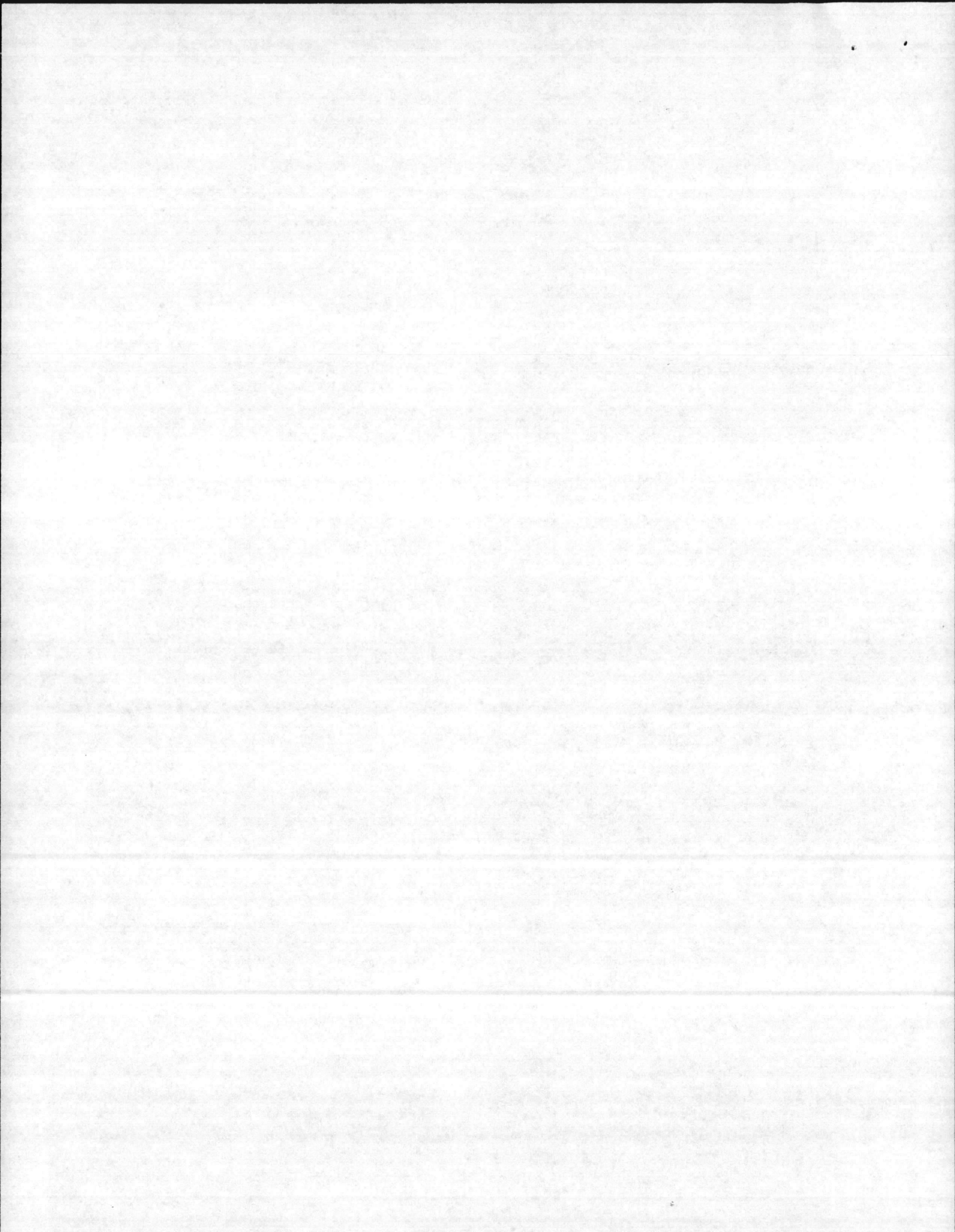
Ref: (a) CG, NCB, CLNC ltr MAIN/FEC/bb 11300 dtd 6 Aug 1982

Encl: (1) Carolina Power and Light Co. ltr to AC/S, Fac dtd 31 Aug 1982
(2) Sketch showing NCB property line along Northeast Creek

1. The reference requested an Easement and Joint Use Agreement to cover Carolina Power and Light Company's proposed installation of a 230KV-23KV substation and separate feeder to our Tarawa Terrace housing area. The separate feeder would include installation of crossing structures and overhead primary conductors across Northeast Creek. As stated by the reference, the proposed additional facilities are required due to the installation of heat pumps in the housing units at Tarawa Terrace.
2. Subsequent to the information supplied by Carolina Power and Light Company (CP&L) and as contained in the reference, CP&L has now determined that an underwater creek crossing (Northeast Creek) would be a more practical and cost effective manner to provide the service to Tarawa Terrace. The reasons for the change and sketches of the changes to the overhead crossing are shown by enclosure (1).
3. For your information, Camp Lejeune's boundary and property rights terminate at the high water line of Northeast Creek and are shown by enclosure (2) in red. Accordingly, it may be necessary for CP&L to acquire a permit from the Corps of Engineers for this crossing.
4. It is requested that the proposed Easement and Joint Use Agreement requested by the reference be finalized and that the changes as brought out in enclosure (1) be incorporated in the proposed instrument.
5. For additional information contact Mr. John Jordan, Realty Specialist, Public Works Division, Autovon No. 484-2018.

R. E. CARLSON
By direction

Copy to: (w/encls)
AC/S, Fac
MAIN





Carolina Power & Light Company

Jacksonville, North Carolina
August 31, 1982

ORDER	
1	04
2	405
3	405.1
4	
5	
	ORD
	INT

Assistant Chief of Staff-Facilities
Building One
Camp Lejeune, North Carolina 28542

Dear Sir

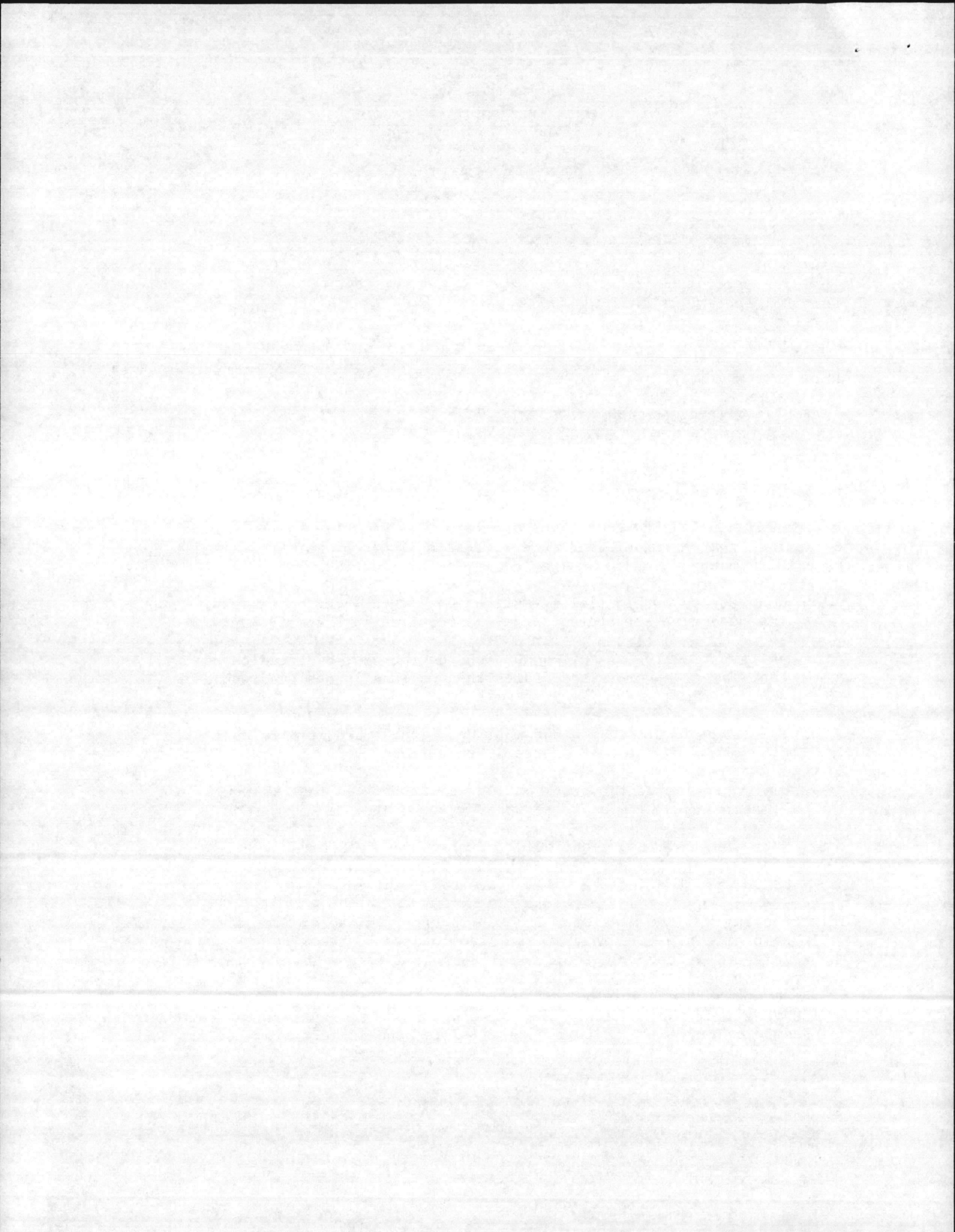
RE: U.S. MARINE CORPS
CAMP GEIGER 670010103
TARAWA TERRACE HOUSING PROJECT
ACCOUNT #04 320 02 367 19

In a previous correspondence dated August 2, 1982, you were informed of our plans to install crossing structures and overhead primary conductors across Northeast Creek in order to provide upgraded electric service to the above referenced housing project. Subsequent to this communication, we have determined that an under water creek crossing would be more practical. We base this change in our plans on the following factors.

1. Contrary to our initial investigation, it has been determined that concrete structures cannot be received in a timely manner.
2. An investigation of soil conditions on the west bank indicated that larger concrete structures than originally designed would be required.
3. The swamp conditions on the west bank would make it difficult and costly to set the concrete structures.
4. Divers evaluated the creek bottom and determined that it would be compatible with a buried under-water cable.
5. When the previously mentioned factors were considered in a cost analysis, it was determined that an under-water crossing would be more cost effective than an overhead crossing.

This crossing will be made with 750 MCM underground cable. The first circuit will begin at a dip pole in the east side located 65 feet from the edge of the water and 50 feet from the center of the existing military distribution feeder. The cable will be buried from this point to a point on the west side of the creek. This point will be located 12 feet from the edge of the water and 30 feet from the center of the existing military distribution feeder. The second circuit will be buried parallel to, and 12 feet from the first circuit on the side adjacent to the existing military feeder.

ENCL (1)



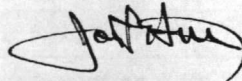
August 31, 1982

Each of these circuits will be buried at least three feet below the bottom of the creek. That portion of the circuit which will be buried on land will be placed in six-inch conduit at a depth of three feet.

On the west side of the creek, both circuits will go through pull boxes. These boxes will be located 12 feet from the edge of the water. The first circuit pull box will be located 24 feet from the existing military feeder and the second circuit pull box will be located 12 feet away from the existing military feeder. From these points, both circuits will run 620 feet underground through marsh to two dip poles. At a point 310 feet from the first pull boxes, the first circuit will taper in so as to be only five feet away from the other line. At this point, two more pull boxes will be set. The underground circuits will then be buried an additional 310 feet and end at two dip poles. This will complete the underground wire crossing.

I have enclosed two drawings of the underground creek crossing which you may find helpful. This alternate plan is consistent with our desire to provide reliable electric service to the military in the most cost effective manner. Your concurrence and cooperation in this matter will be greatly appreciated.

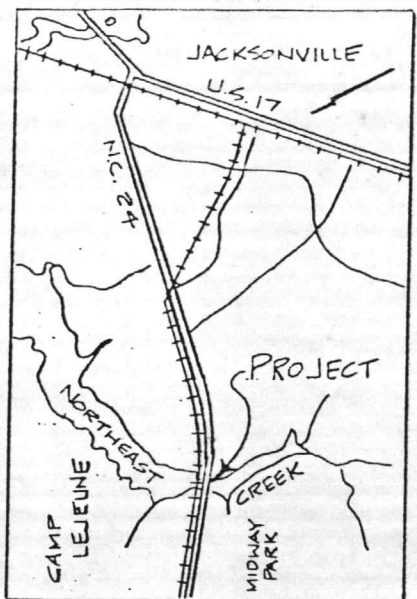
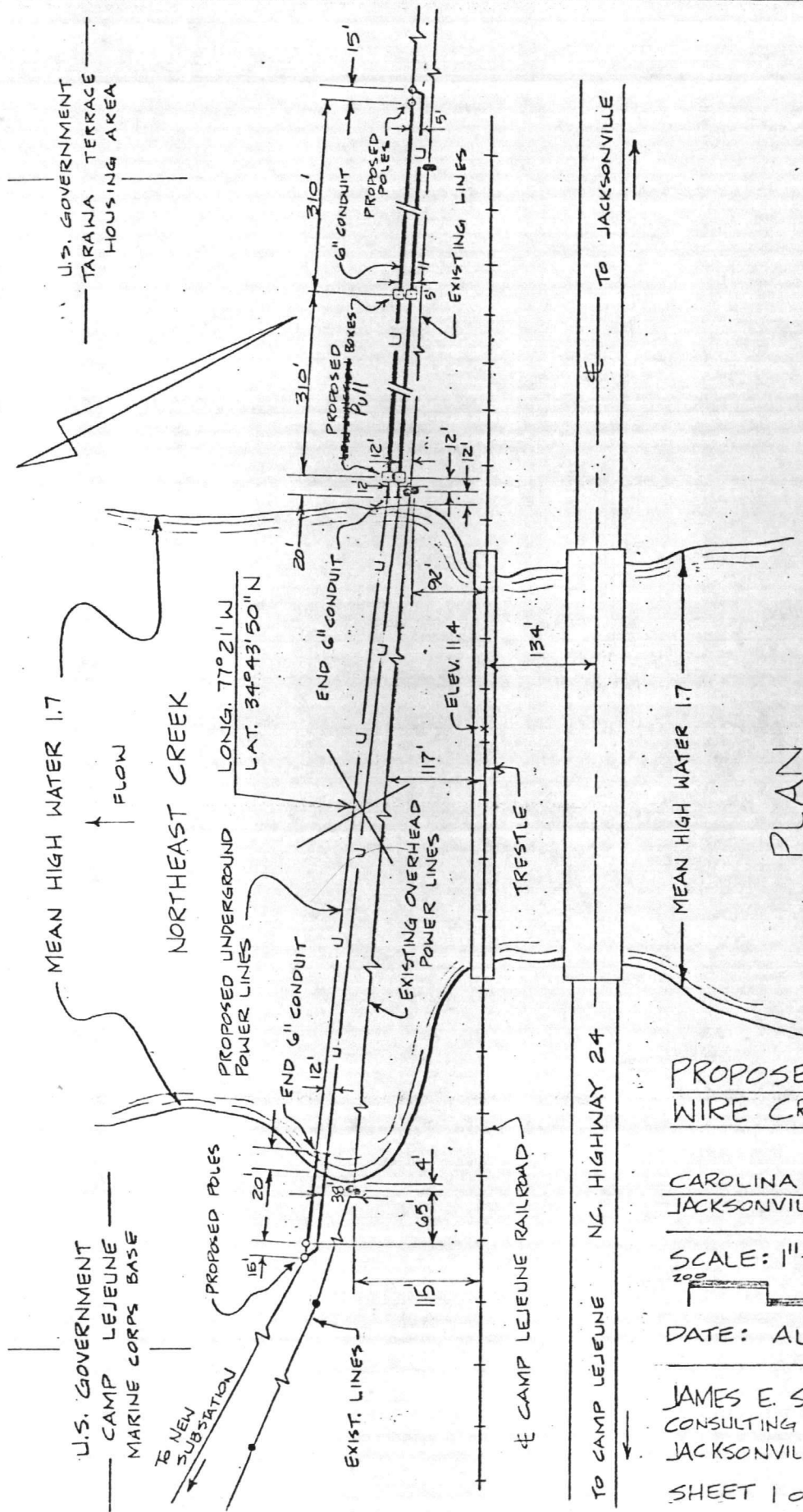
Sincerely



Jay C. Hinson, Jr. P.E.
Customer Service Manager

bts

Enclosures



VICINITY MAP SCALE 1" = 2 MILES
 FROM ONSLOW COUNTY MAP BY N.C.D.O.T.

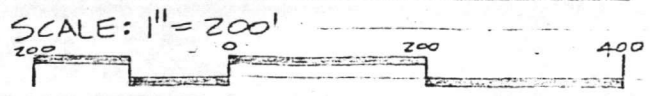
PURPOSE:
 TO UPGRADE EXISTING FACILITY (ELECTRICAL SERVICE)

LEGEND
 ● - EXISTING UTILITY POLE
 ○ - PROPOSED UTILITY POLE

PLAN

PROPOSED UNDERGROUND WIRE CROSSING - NORTHEAST CREEK

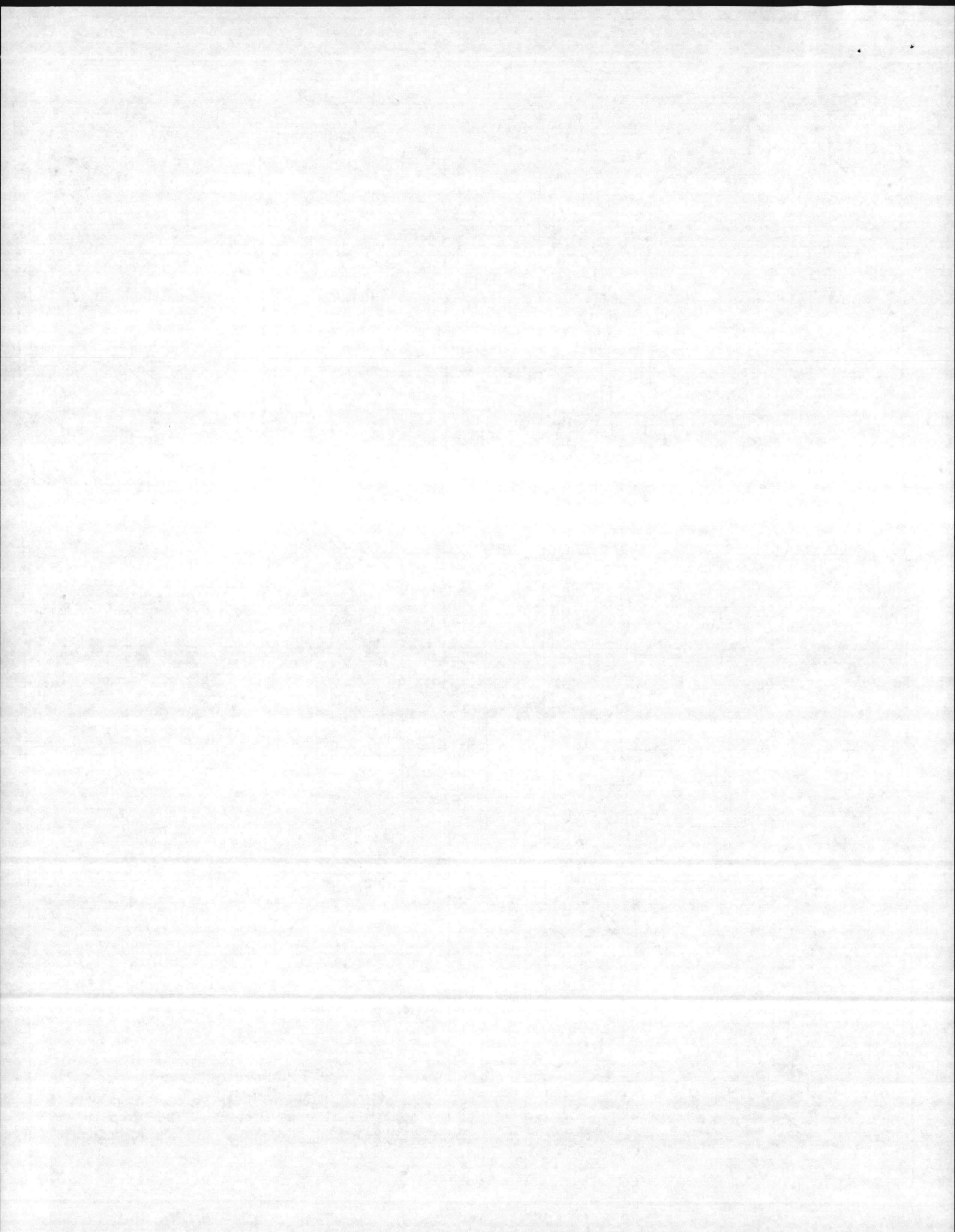
CAROLINA POWER & LIGHT COMPANY
 JACKSONVILLE, NORTH CAROLINA

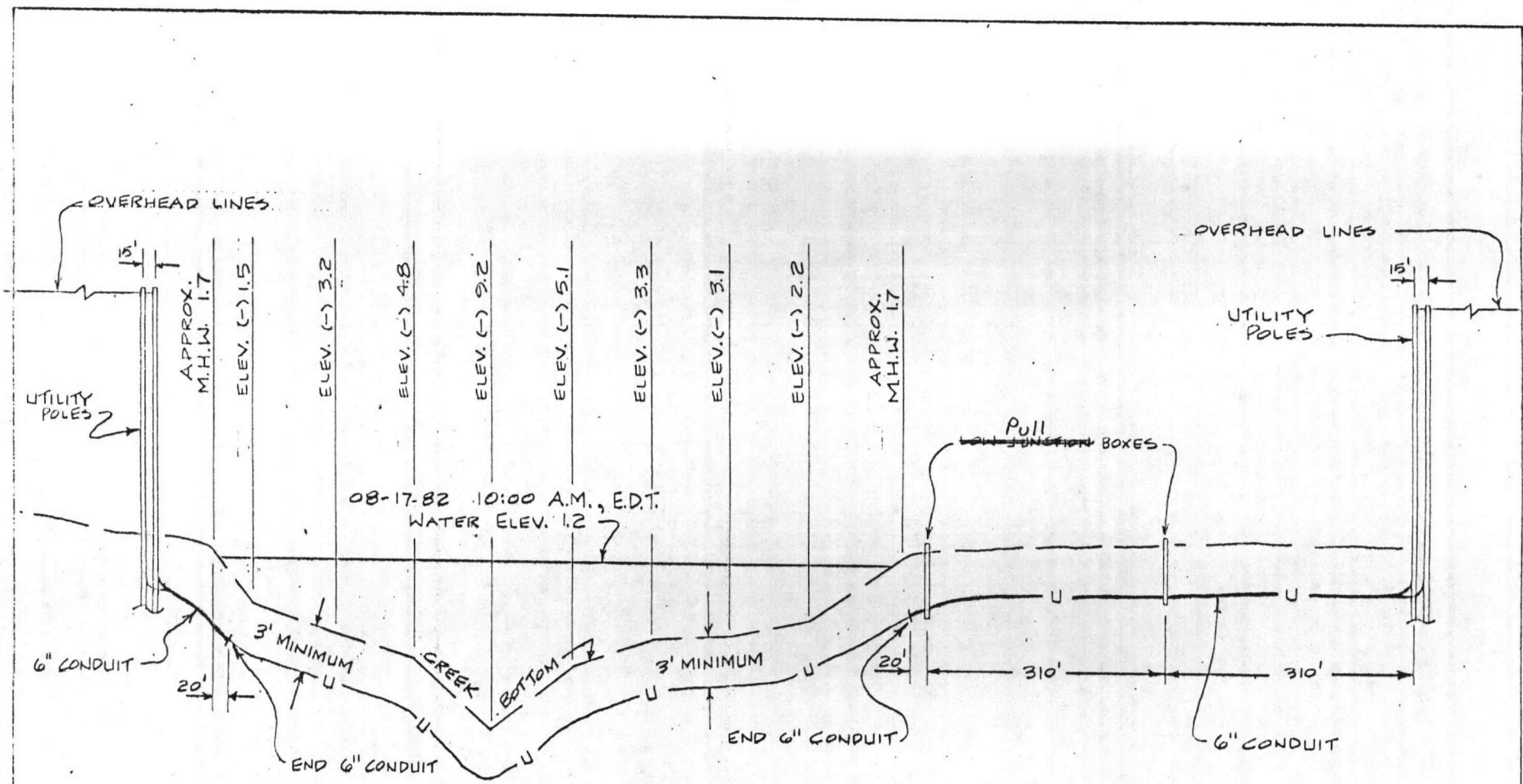


DATE: AUG. 26, 1982

JAMES E. STEWART & ASSOCIATES INC
 CONSULTING ENGINEERS - LAND SURVEYORS
 JACKSONVILLE, NORTH CAROLINA

TMS

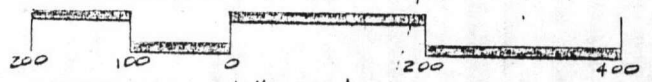




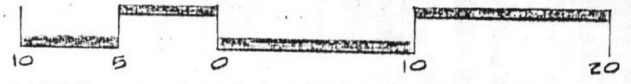
PROFILE

SCALE:

HORIZONTAL 1" = 200'



VERTICAL 1" = 10'



VERTICAL DATUM NGVD 1929 0.0 = MSL

LEGEND

- U — UNDERGROUND POWER LINES
- OVERHEAD POWER LINES

PURPOSE:

TO UPGRADE EXISTING FACILITY (ELECTRICAL SERVICE)

PROPOSED UNDERGROUND WIRE CROSSING • NORTHEAST CREEK

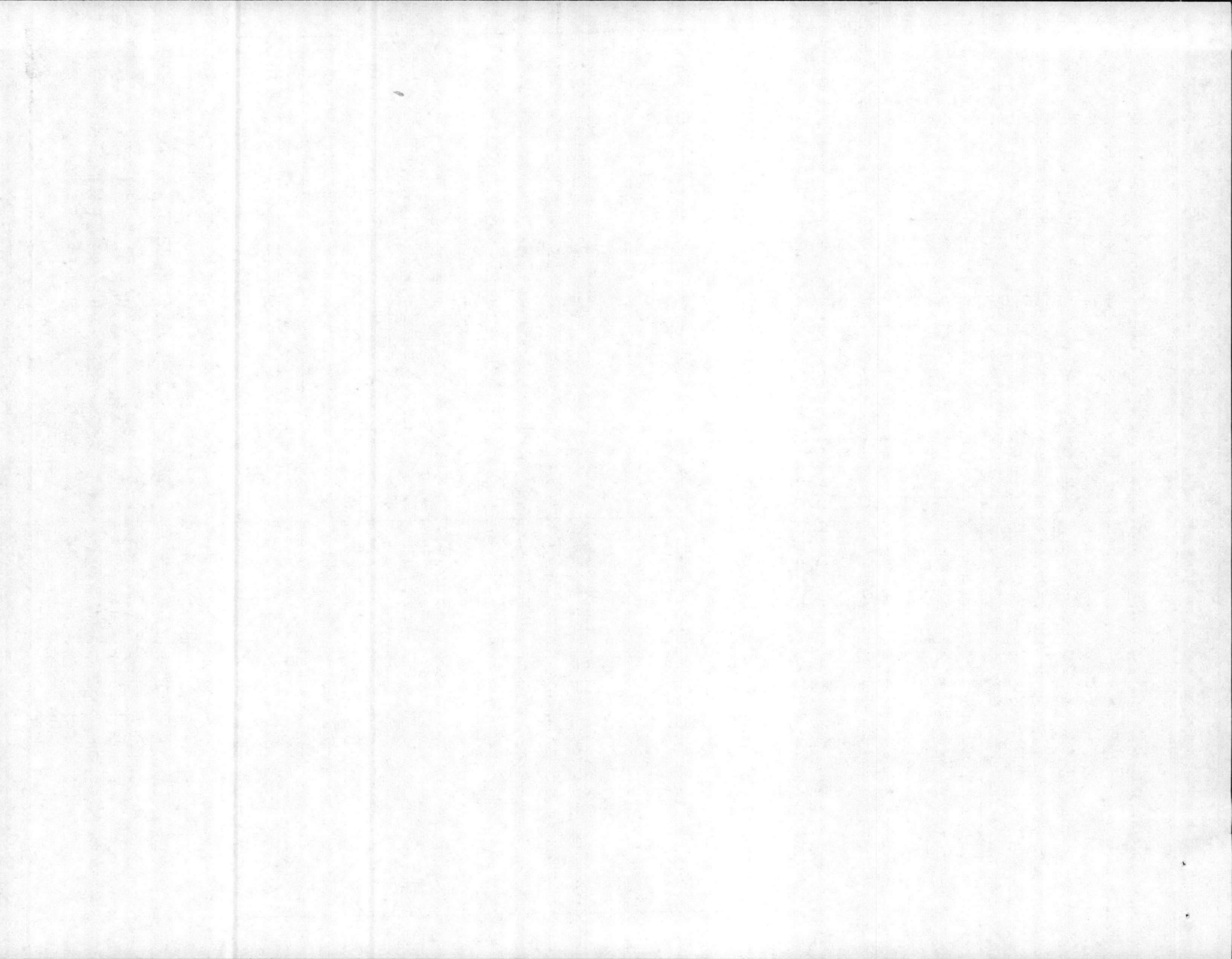
CAROLINA POWER & LIGHT COMPANY
JACKSONVILLE, NORTH CAROLINA

SCALE: AS NOTED

DATE: AUG. 26, 1982

JAMES E. STEWART & ASSOCIATES INC.
CONSULTING ENGINEERS • LAND SURVEYORS
JACKSONVILLE, NORTH CAROLINA

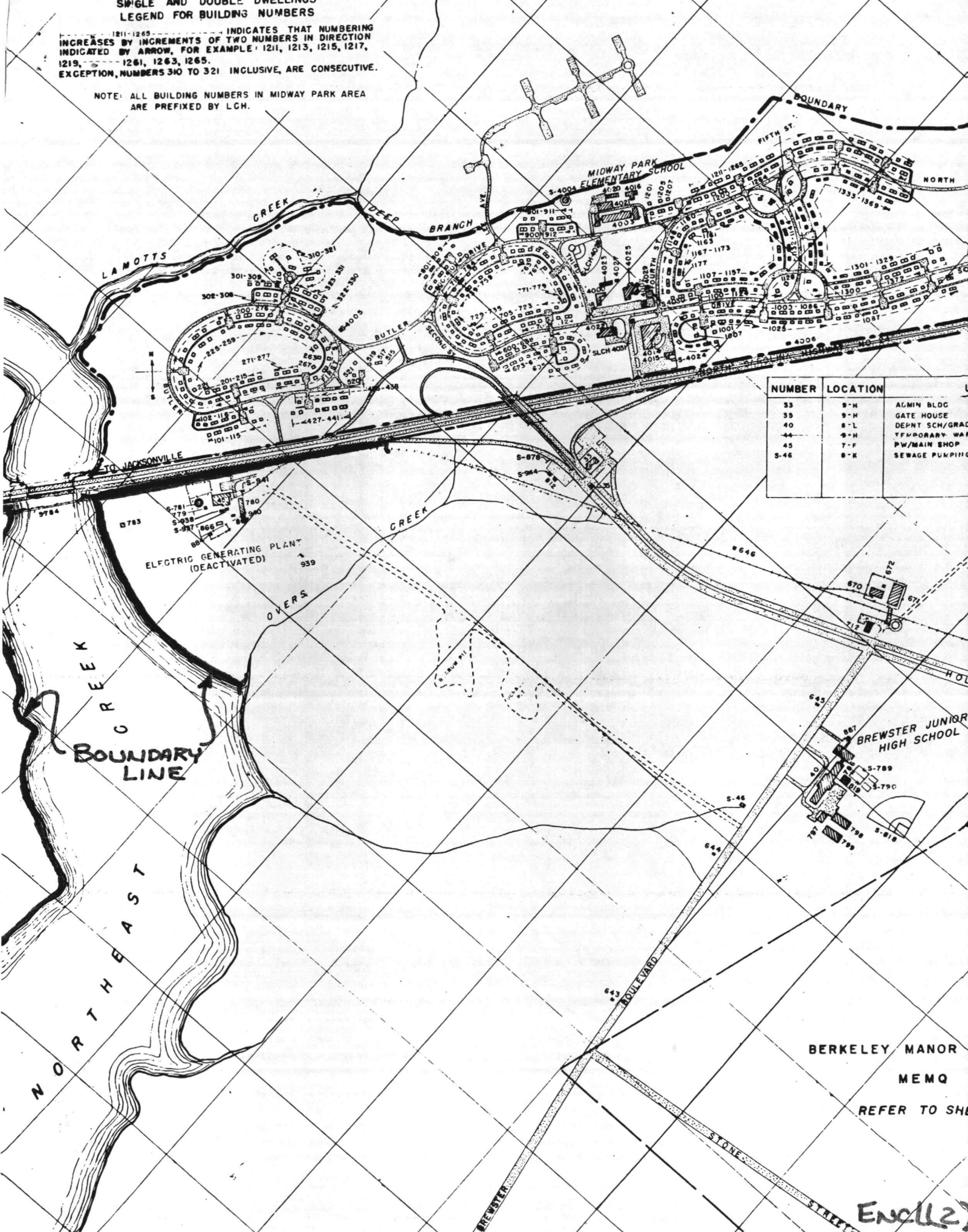
SHEET 2 OF 2



**SINGLE AND DOUBLE DWELLINGS
LEGEND FOR BUILDING NUMBERS**

1211-1265 INDICATES THAT NUMBERING INCREASES BY INCREMENTS OF TWO NUMBERS IN DIRECTION INDICATED BY ARROW, FOR EXAMPLE: 1211, 1213, 1215, 1217, 1219, 1261, 1263, 1265.
EXCEPTION, NUMBERS 310 TO 321 INCLUSIVE, ARE CONSECUTIVE.

NOTE: ALL BUILDING NUMBERS IN MIDWAY PARK AREA ARE PREFIXED BY LCH.



NUMBER	LOCATION	U
33	9-M	ADMIN BLDG
35	9-M	GATE HOUSE
40	8-L	DEPT SCH/GRADE
44	9-M	TEMPORARY WAR
45	7-F	PW/MAIN SHOP
S-46	8-K	SEWAGE PUMPING

BERKELEY MANOR
MEMO
REFER TO SHE

ENC(2)

