

NOTES
 All existing sanitary sewer and drain manholes that are to be relocated or abandoned, shall be removed and all pipes, incoming or outgoing, shall be securely plugged with concrete.
 For details of sanitary sewer and drainage structures see Y&D Dwg. No. 486668.
 For details of Cast Iron Pipe connections between Proposed 2,000,000 Reservoir and existing reservoir see Y&D Dwg. No. 486873.

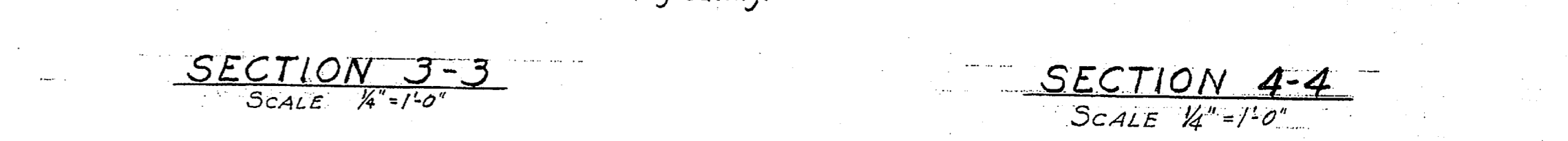
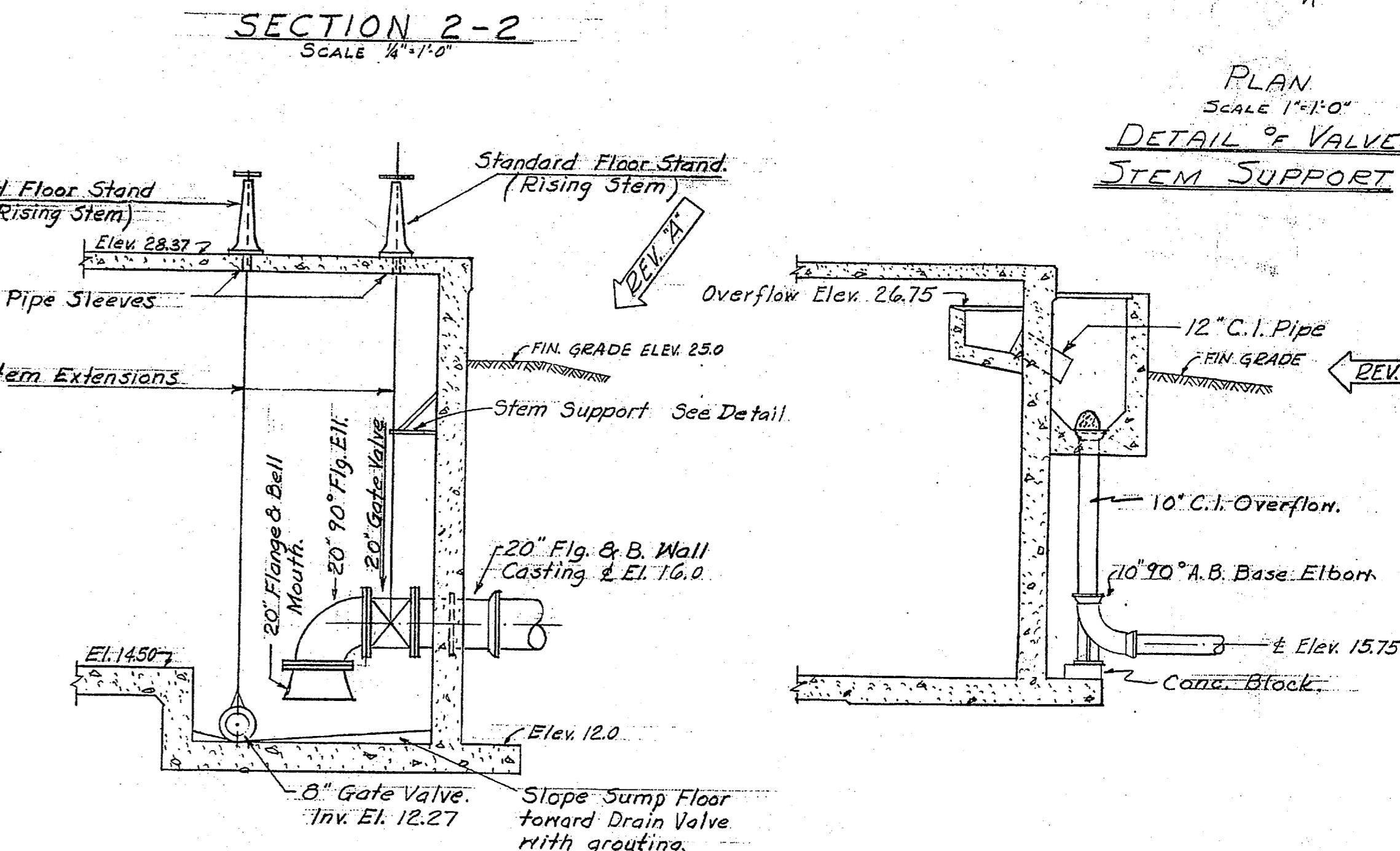
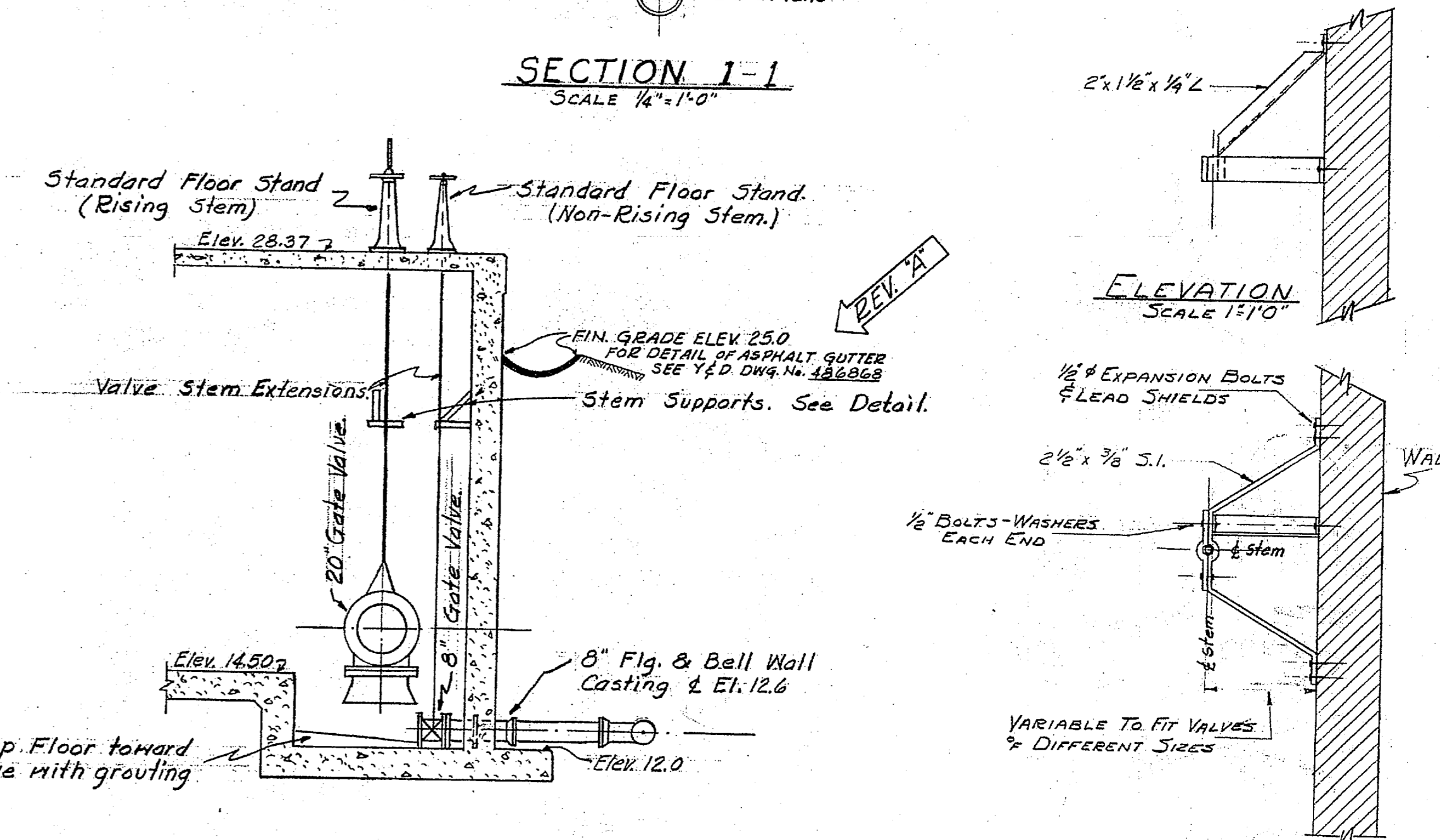
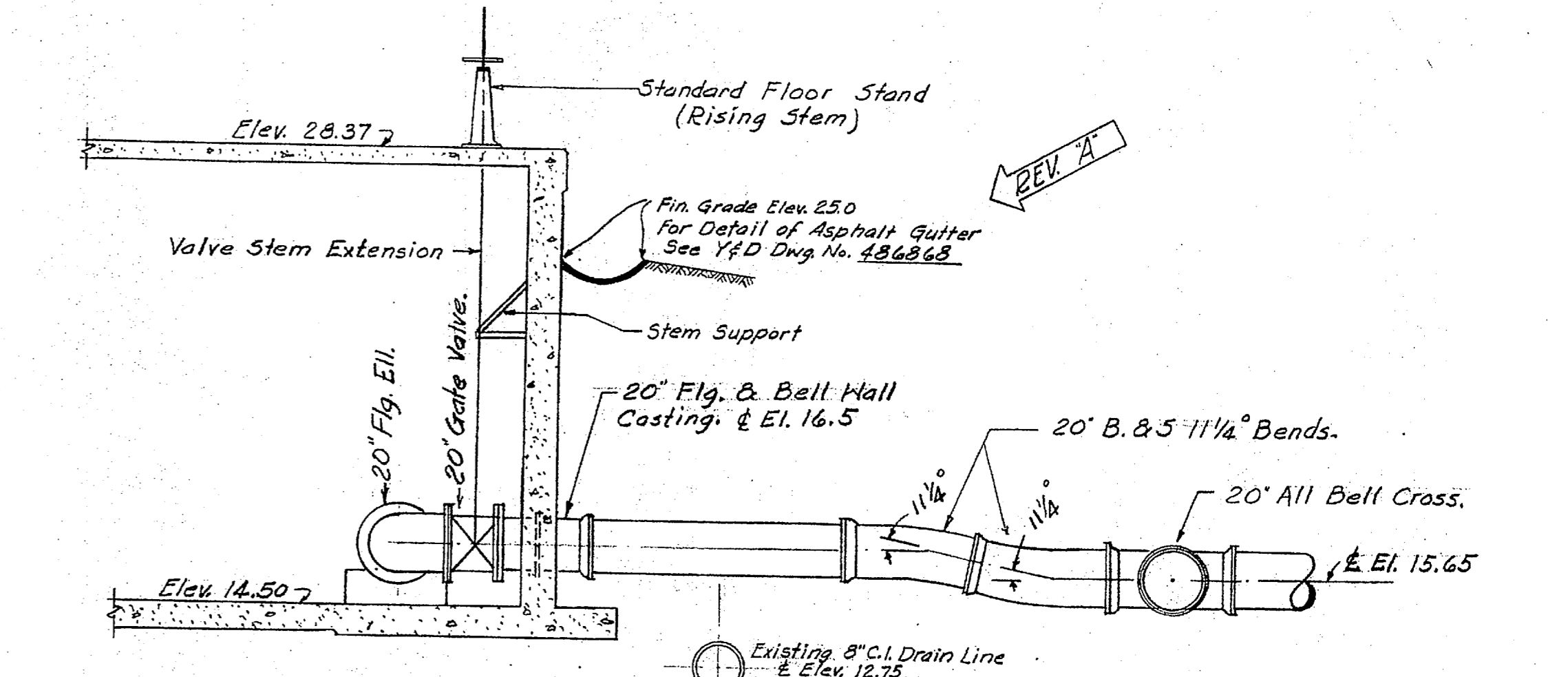
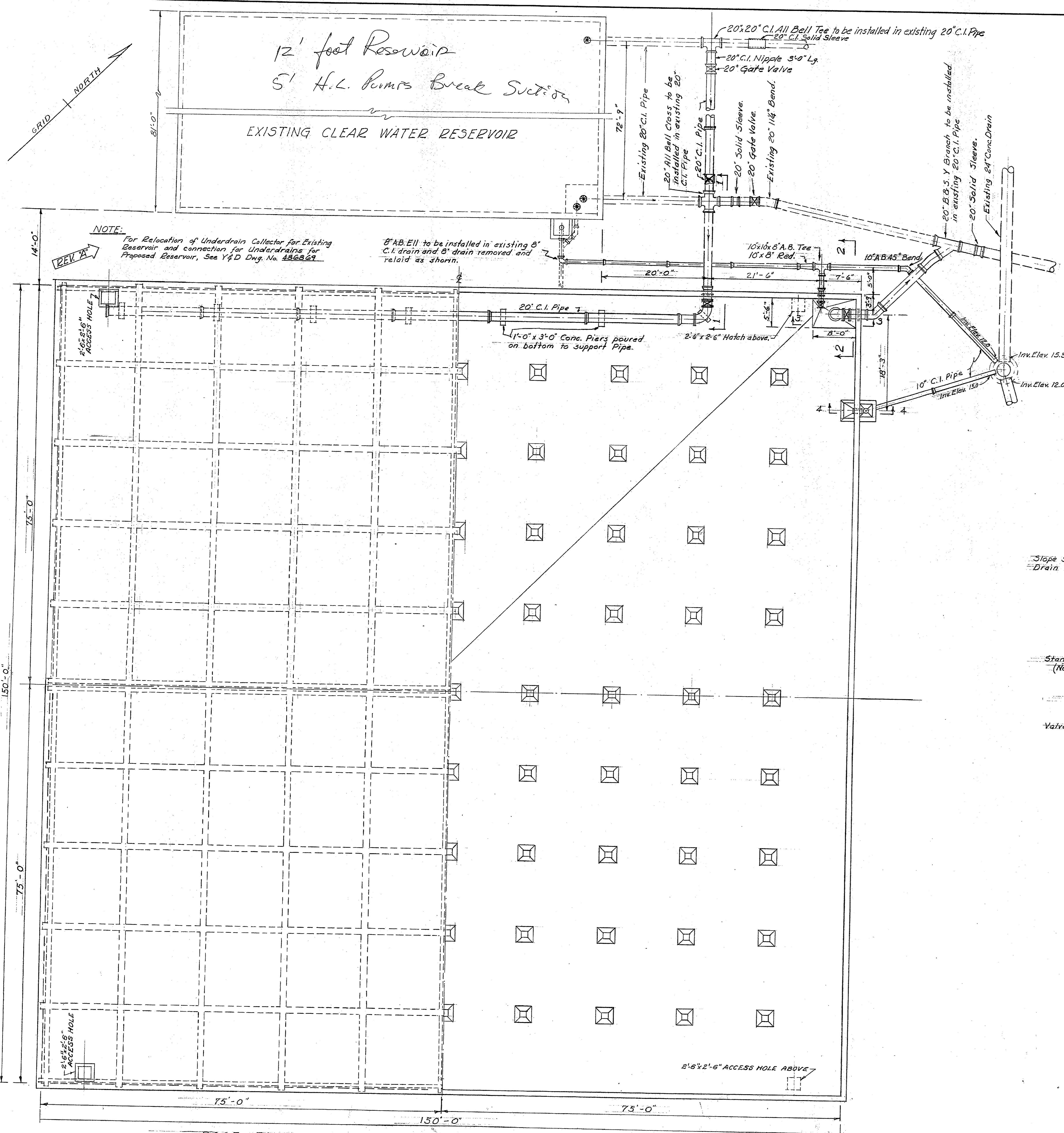
ELECTRIC WORK DATA
 Pole Letters
 A New inserted 40' 3 Pole, Dead end both sides, Double arm, 2 Suspension Insulators each line, each side, Complete Guy, Anchor & Insulator Assembly.
 B Remove existing 40' 3 Pole
 C New inserted 40' 3 Pole, Dead end both sides, Double Arm, Wires shall be supported by Vertical Insulator, from hanging
 D Existing 40' 3 Pole equipped with a 45 KVA 3φ Transformer, 2 Service Conductors and 1-8 Arm, 2 Suspension Insulators each side, Complete Guy, Anchor & Insulator Assembly.

ELECTRICAL NOTES
 This symbol (---) indicates the section of the existing pipeline to be revised under this contract in order to affect the removal of existing pole B.
 The new span between Poles A & C shall be 3 1/2 MHD. Wires, the existing line, wire is 3 1/2 MHD.

LEGEND
 Existing underground Electric Line
 Existing overhead Electric Line
 Existing underground Telephone
 Existing Overhead Telephone
 Existing High Pressure Steam (Feed)
 Existing High Pressure Steam (Return)
 Existing Water Lines
 Existing Sanitary Sewer Manhole
 Existing Storm Sewer
 Proposed overhead Electric Line
 Proposed Raw Water Line
 Proposed Sanitary Sewer Manhole
 Proposed Storm Sewer

REVISION	DATE	APPD.	DESCRIPTION	BY
C	7/5/51	WFE	RELOCATION 24\"/>	
B	8/1/51	WFE	RELOCATION 30\"/>	
A	3/24/51	WFE	ADDITION OF NOTES & ALTERATION OF PIPE SIZE	
P.W. DRAWING NO. 7869			MARINE BARRACKS CAMP LEJEUNE, N. C.	
DESIGNED BY: [Signature]			CORRECTION OF DEFICIENCIES IN RAW WATER SYSTEM	
DRAWN BY: [Signature]			S-763	
TRACED BY: [Signature]			2,000,000 GALLON RESERVOIR SITE AND UTILITIES PLAN	
CHECKED BY: [Signature]			APPROVED: <i>E.R. Bennett</i> DATE 3/7/51	
SUPERVISOR: [Signature]			PUBLIC WORKS OFFICER	
IN CHARGE: [Signature]			SCALE 1\"/>	
APPROVED: [Signature]			SHEET 12 OF 20 SPEC 27079	
DATE: [Blank]			NOV 24 1951	
THE QUARTERMASTER GENERAL OF THE MARINE CORPS			Y&D DRAWING NO. 486869	





ROOF PLAN

PLAN BELOW ROOF

7	3-12-51	CRB	ASPHALT GUTTER, FINISHED GRADES AND NOTES	WPE
REVISION	DATE	APPD.	DESCRIPTION	BY
P.W. DRAWING NO.			MARINE BARRACKS	
7873			CAMP LEJEUNE, N. C.	
DES	WPE		CORRECTION OF DEFICIENCIES IN	
DRWN	WPE		RAW WATER SYSTEM	
TR	WPE		S-763	
CHK	WPE		2,000,000 GALLON RESERVOIR	
SUPV	WPE		PIPING DETAILS	
APPROVED			DATE 3/7/51	
IN CHARGE			PUBLIC WORKS OFFICER	
APPROVED			SCALE As Shown SPEC 27079	
DATE			SHEET 16 OF 20 NOY 24977	
THE QUARTERMASTER GENERAL OF THE MARINE CORPS			Y&D DRAWING NO. 486873	

