

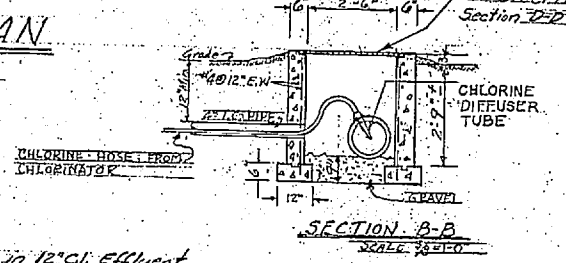
YARD PIPING PLAN

LEGEND

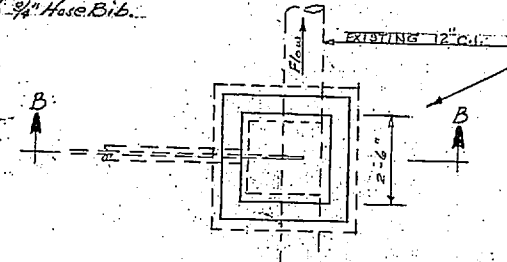
- EXISTING BUILDINGS OR STRUCTURES
- EXISTING ASPHALT PAVEMENT
- NEW CONC. PIPE - STORM SEWERS
- NEW STANDARD CATCH BASINS - MANHOLES
- NEW FLARED END CONC. PIPE SECTS.
- EXIST. PIPE HEADWALLS
- NEW WATER LINE & VALVE
- EXISTING WATER LINE & VALVE
- NEW SAN. SEWER LINE
- EXISTING WATER METER

SCALE 1" = 20'-0"

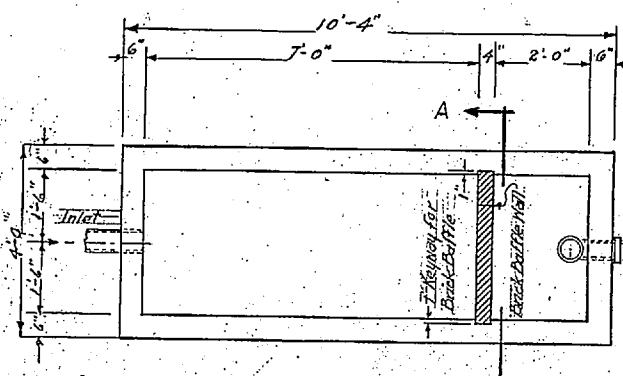
Note:
Install 3/4" separation in 12" C.I. Effluent outside reservoir wall. Bring 3/4" line above finished grade with 3/4" Hole Bib.



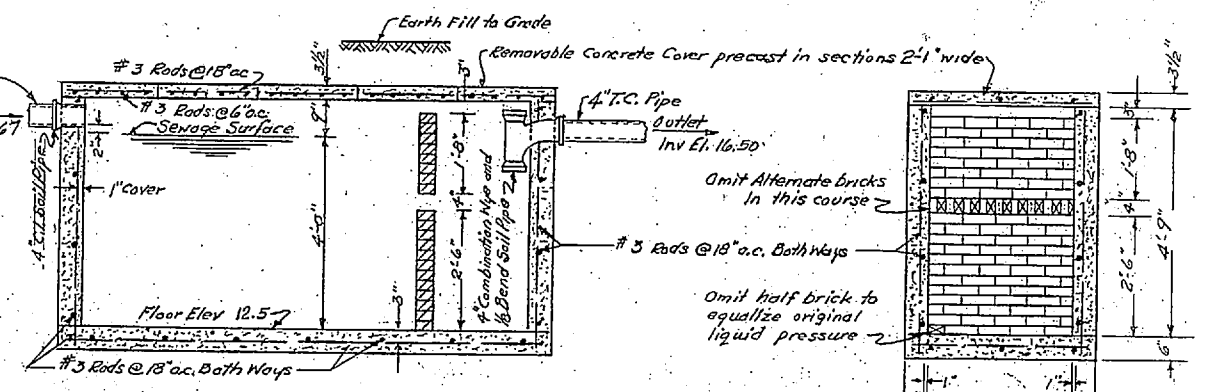
SECTION A-A
SCALE 3/8" = 1'-0"



PLAN OF CHLORINE SERVICE PIT
SCALE 3/8" = 1'-0"

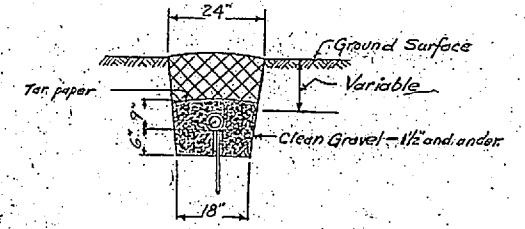


PLAN OF SEPTIC TANK
SCALE 1/2" = 1'-0"

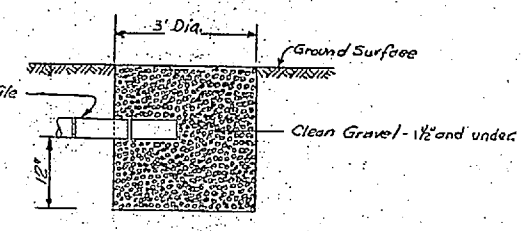
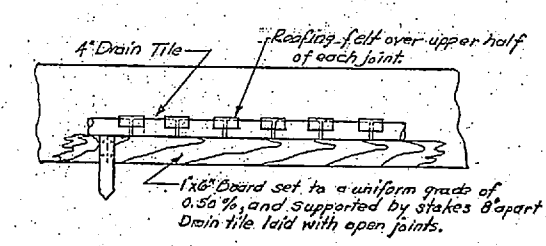


SECTIONAL VIEW OF SEPTIC TANK
SCALE 1/2" = 1'-0"

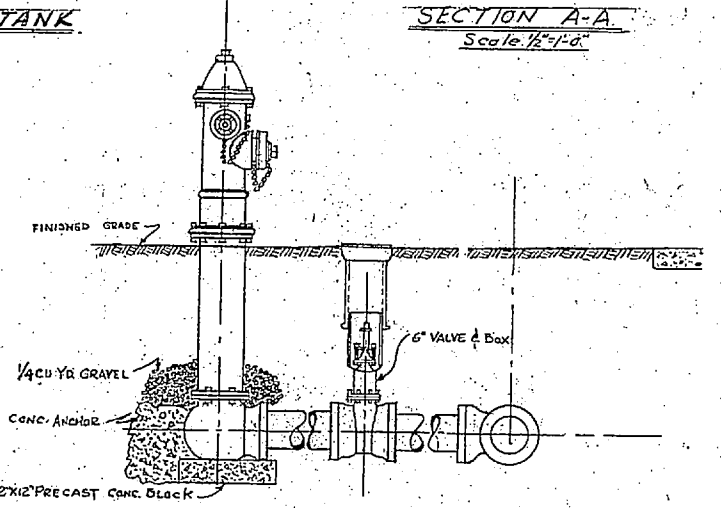
SECTION A-A
SCALE 1/2" = 1'-0"



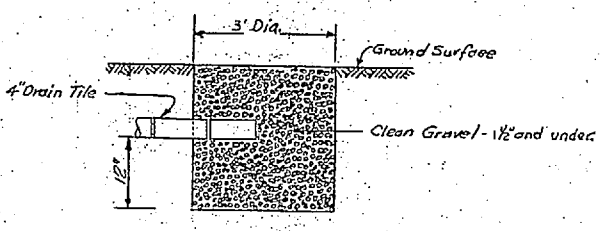
SECTION SHOWING DRAIN TILE IN TRENCH
SCALE 1/2" = 1'-0"



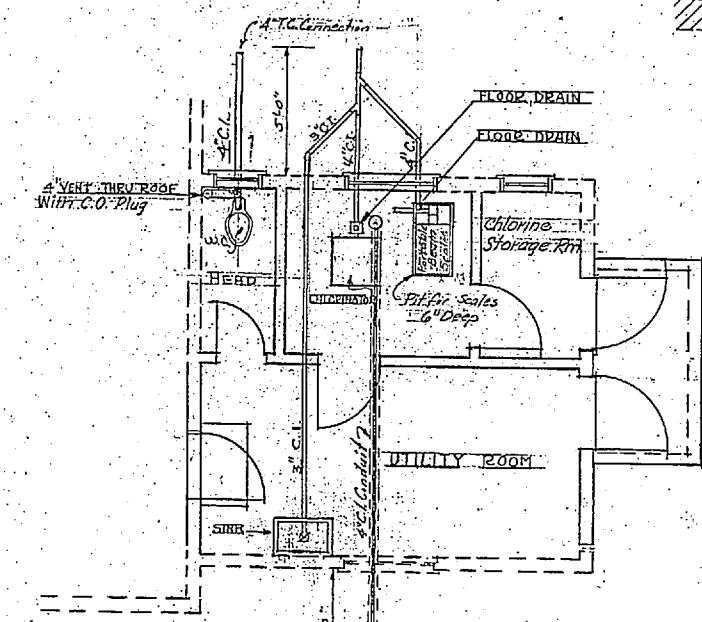
GRAVEL-FILLED PIT
SCALE 1/2" = 1'-0"



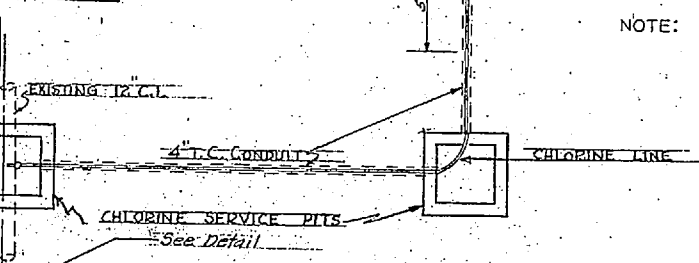
HYDRANT DETAIL
NO SCALE



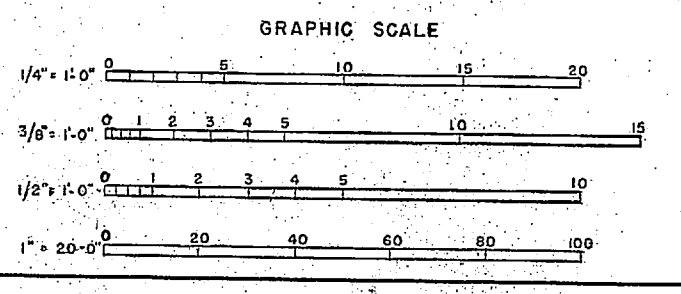
TYPICAL SECTION THRU PAVEMENT CUTS
NO SCALE



PLAN OF CHLORINE LINE & FLOOR DRAINS BLDG TC-508
SCALE 1/4" = 1'-0"

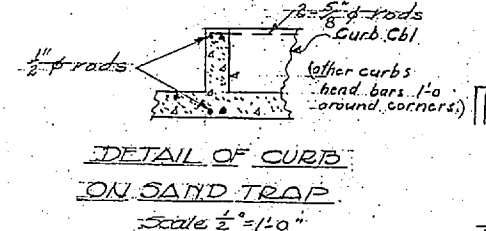
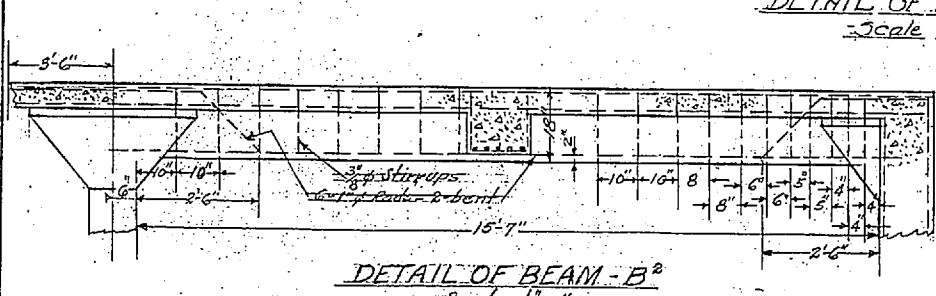
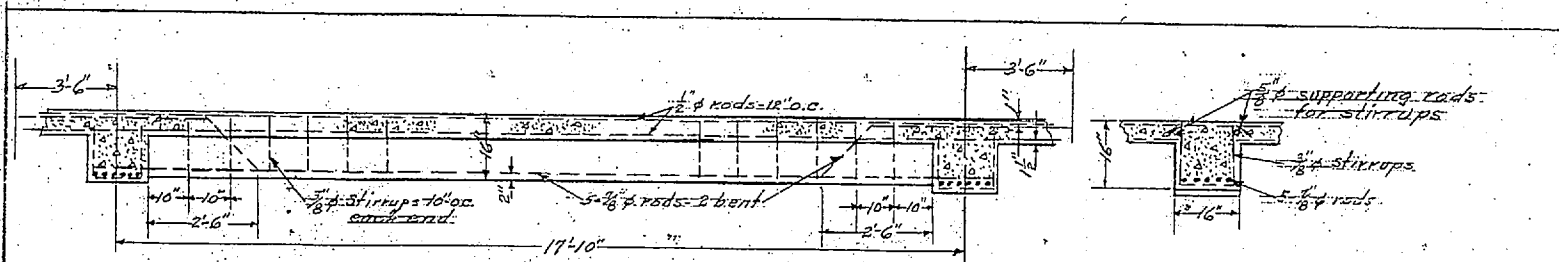


PLAN OF CHLORINE SERVICE PIT
SCALE 3/8" = 1'-0"



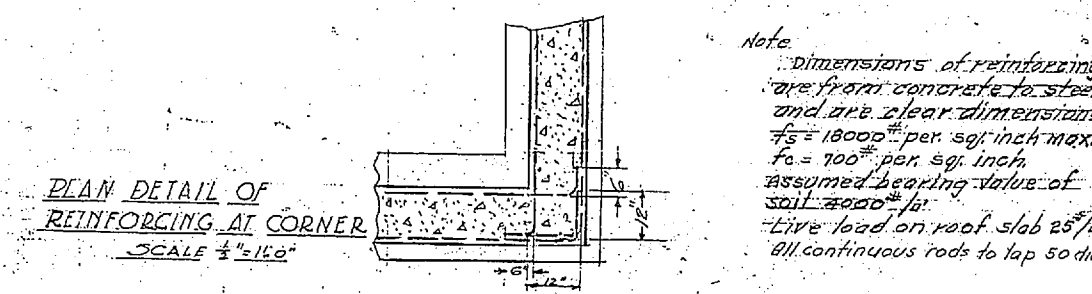
NOTE: DIMENSIONS & ELEVATIONS WHERE SHOWN ON DRAWINGS IN FIGURES SHALL BE USED IN PREFERENCE TO SCALED MEASUREMENTS.

| | | | |
|---|---------------------|---|--|
| DESIGNED BY DRWN BY TR CHK BY SUPV BY IN CHARGE BY | REVISION DATE APPD. | DESCRIPTION | BY |
| 10206 | | MARINE CORPS BASE CAMP LEJEUNE, N. C. | |
| | | EXPANSION WATER TREATMENT FACILITIES CAMP GEIGER | |
| | | YARD PIPING & SEWAGE DISPOSAL SYSTEM PLAN & DETAILS. | |
| | | APPROVED | DATE 7 May 54 |
| | | PUBLIC WORKS OFFICER | |
| | | APPROVED FOR BUREAU OF YARDS & DOCKS | SCALE: GRAPHIC SPEC 41919 |
| | | DATE | SHEET 8 OF 9 No. 83255 |
| | | DATE | DPWO FOR CHIEF OF BUREAU Y & D DRAWING NO. 645306 |

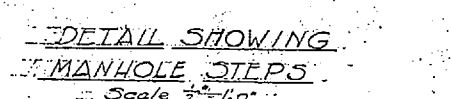
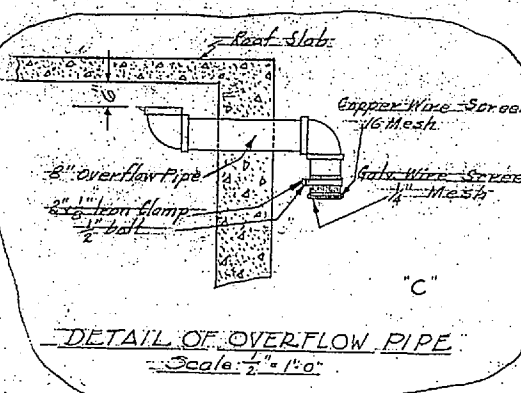
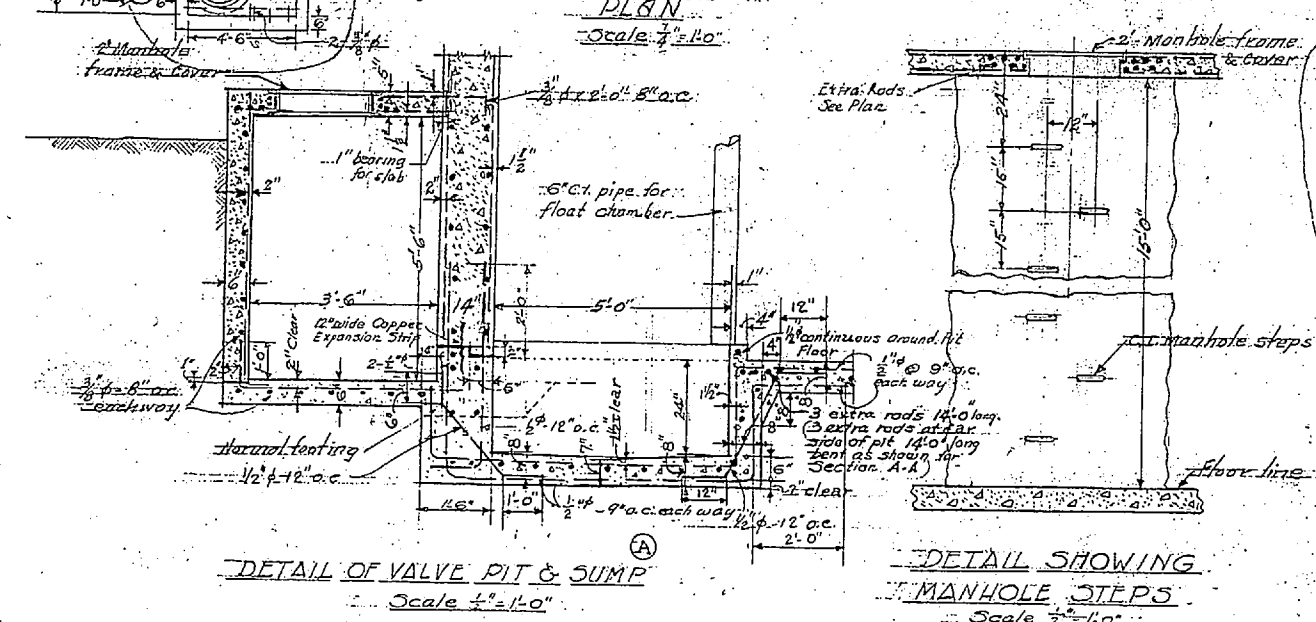
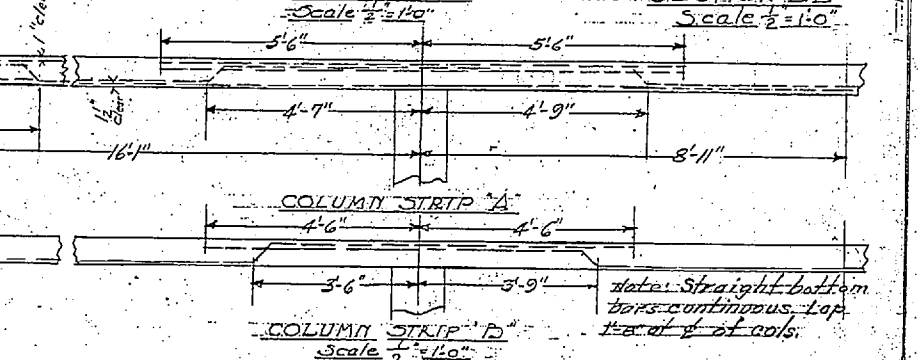
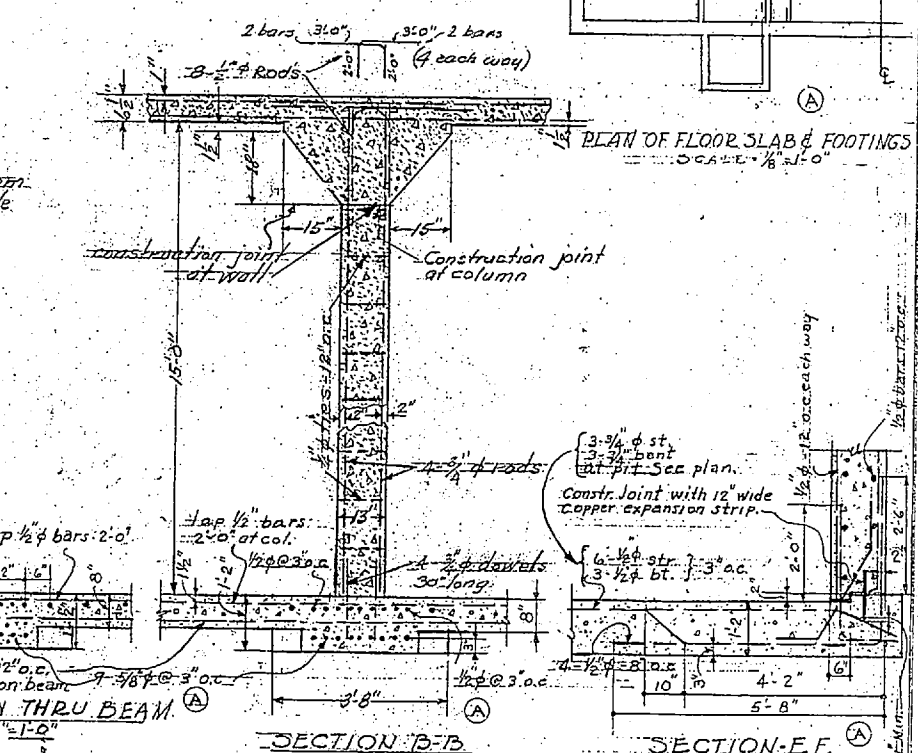
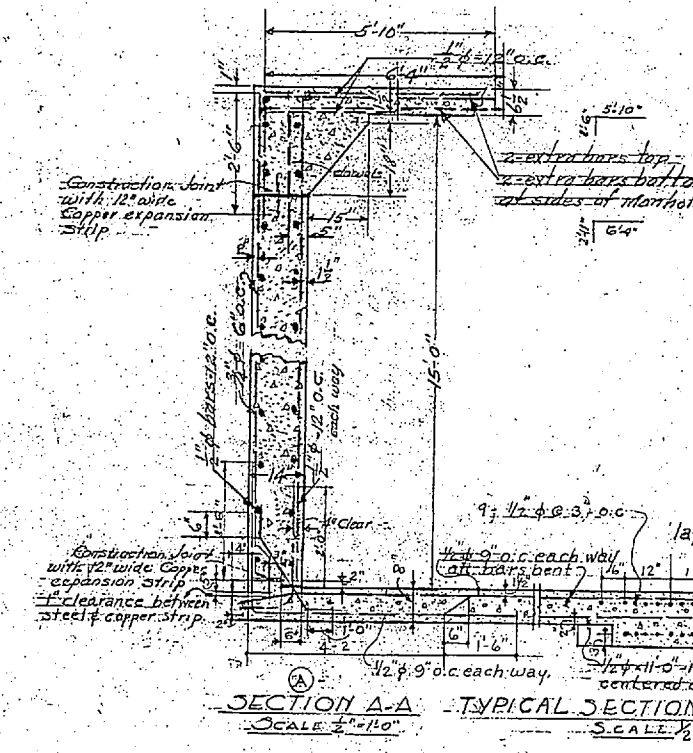
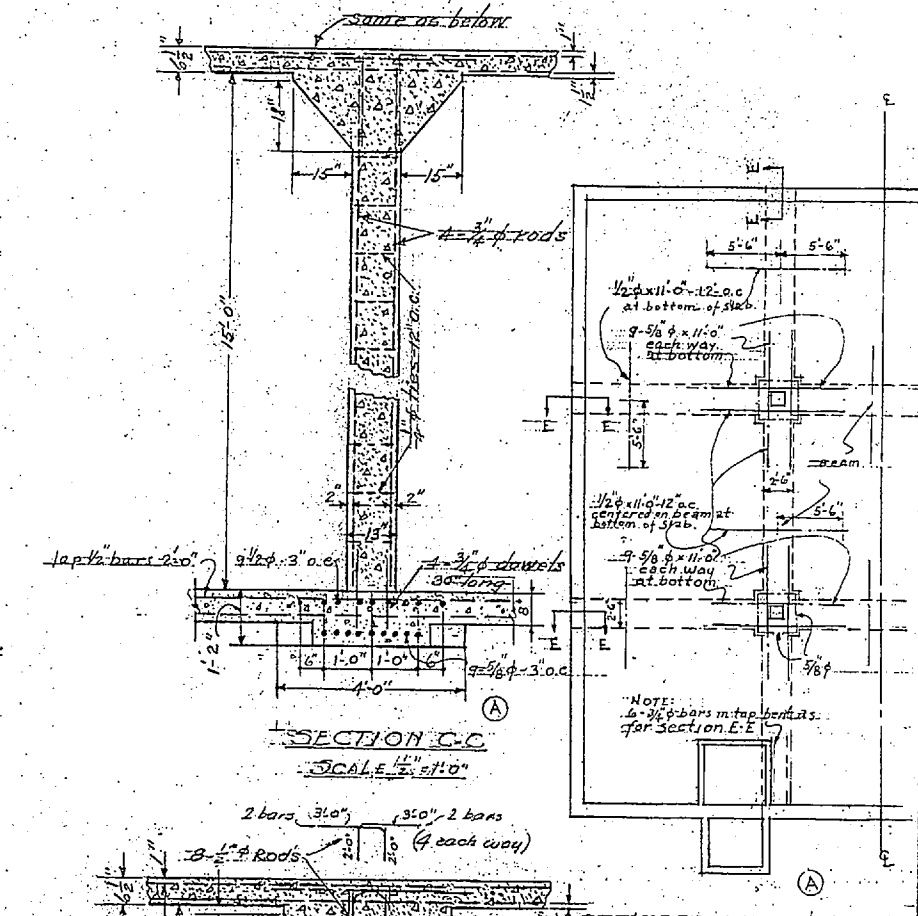
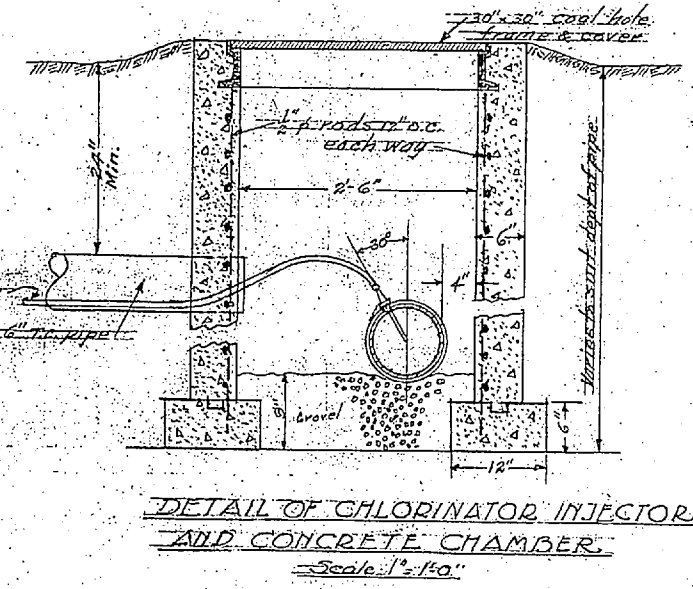
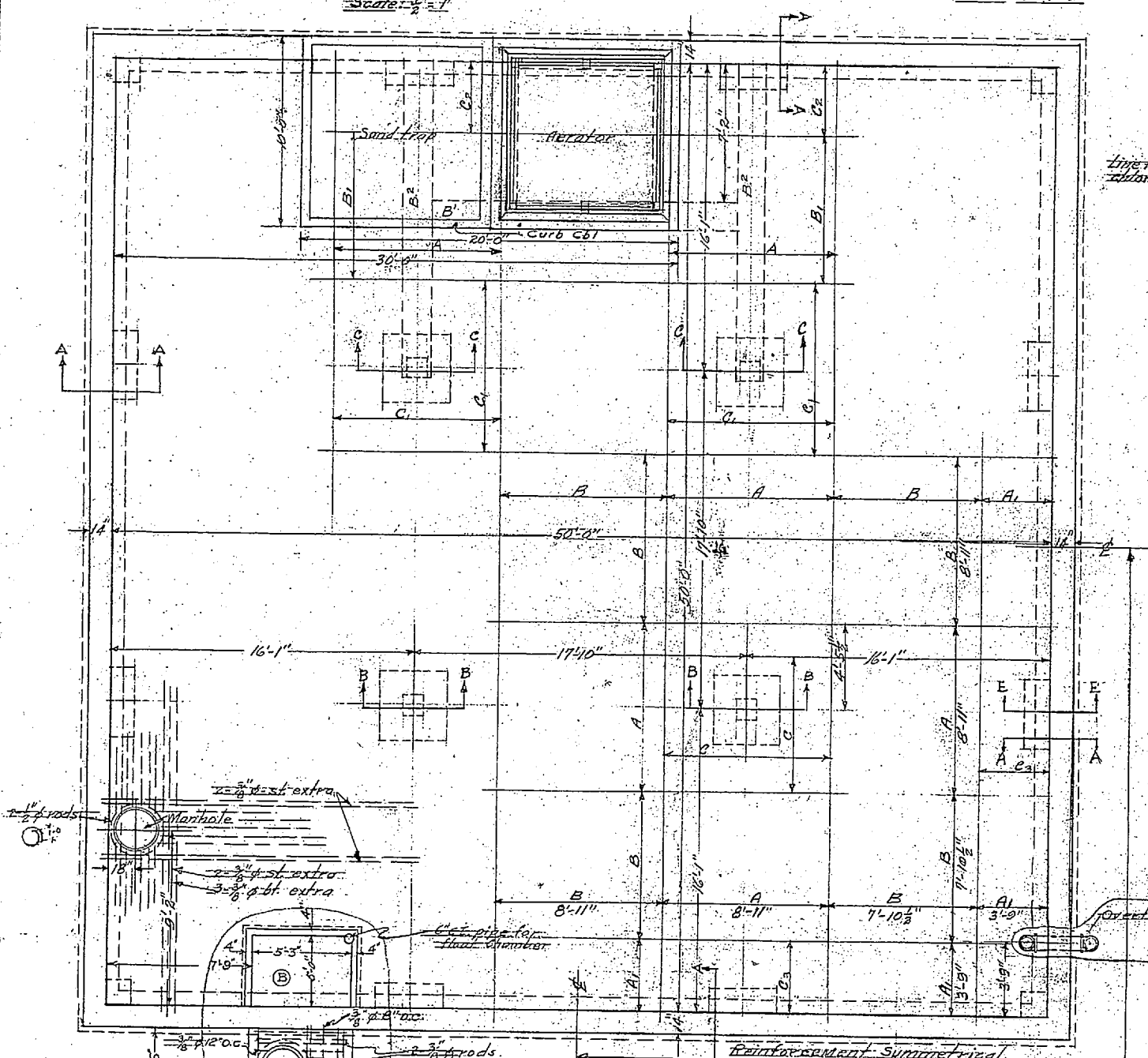


Basal Slab Reinforcement

| Band | Bottom | Top |
|------|------------|----------|
| A | 12-#10-#8 | |
| A1 | 4-#8-5-#8 | |
| B | 12-#8-5-#8 | |
| B1 | | 2-#8-#8 |
| C | | 5-#8-#8 |
| C1 | | 10-#8-#8 |
| C2 | | 6-#8-#8 |
| C3 | | 3-#8-#8 |



Note: Dimensions of reinforcing are from concrete to steel and are clear dimensions. $f_c = 18000$ per sq. inch max. $f_s = 7000$ per sq. inch, assumed bearing value of soil 2000 per sq. ft. Live load on roof slab 25 per sq. ft. All continuous rods to lap 50 dia.

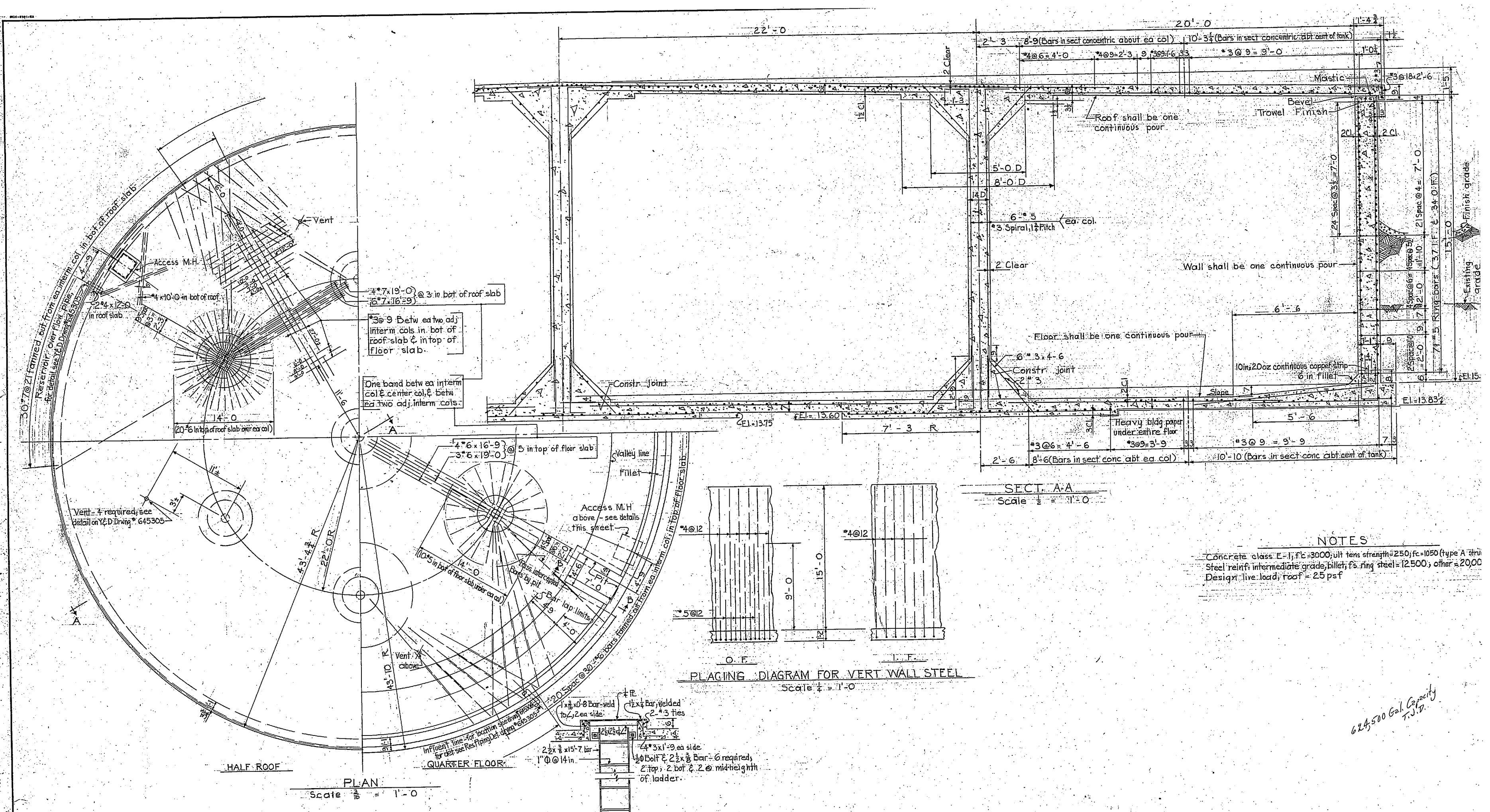


NOTE: If soil conditions are not good for 4000 p.s.f., footing dimensions shall be increased (subject to approval of Officer-in-charge)

| REVISION | DATE | DESCRIPTION | BY | CHKD |
|----------|---------|------------------------------------|-----|------|
| (C) | 6-25-41 | TANK OVERFLOW REVISED | WJL | WJL |
| (B) | 6-18-41 | RELOCATION OF VALVE PIT & SUMP | WJL | WJL |
| (A) | 6-13-41 | REVISION TO FOOTINGS & BOTTOM SLAB | WJL | WJL |

DRAWN BY W.J.L. CAPR & J. GREINER CO. ARCHITECT-ENGINEERS
 TRACED BY DURHAM, N.C.
 CHECKED BY W.J.L. BALTIMORE, MD.
 ENGINEER W.J.L. MARINE DARRACKS-NEW RIVER, N.C.
 IN CHARGE W.C.M. BUREAU OF YARDS & DOCKS U.S. NAVY
 DATE 6-4-41
 SCALE As shown
 T.E.D. DRAWING NO. 161846
 PROJECT NO. 12-104
 SHEET 12 OF 3
 M.A. PROJ. NO. R.14
 H.B. DRWG. NO. TC-50

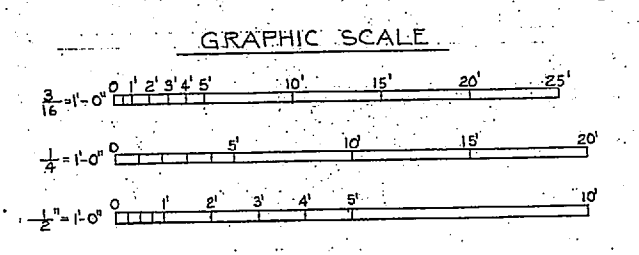




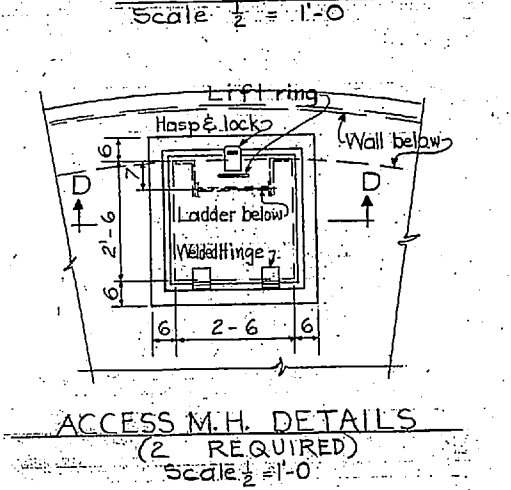
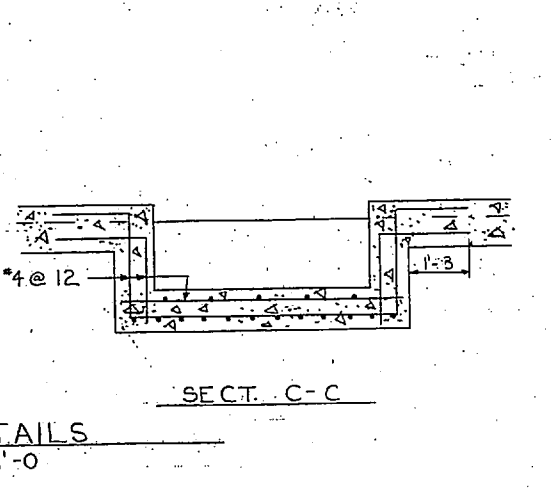
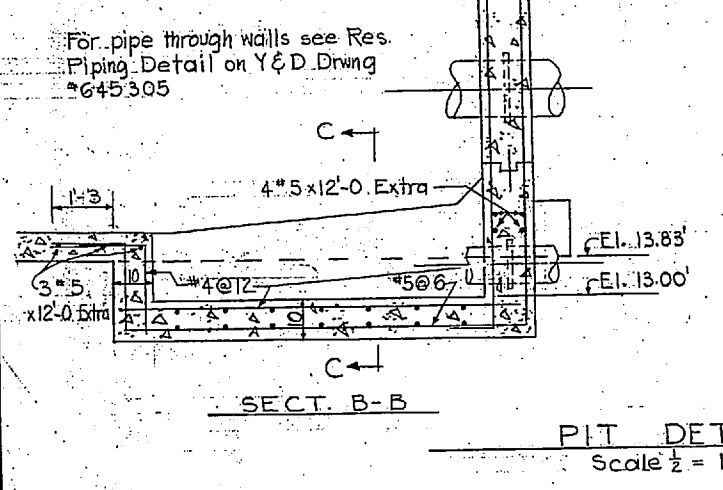
NOTES
 Concrete class E-1; f'c=3000; ult tens strength=250; f'c=1050 (type A stirrups)
 Steel yield: intermediate grade, billet; f's: ring steel=12500, other=2000
 Design live load; roof = 25 psf

*625,500 Gal. Capacity
 T.S.P.*

NOTE
 DIMENSIONS AND ELEVATIONS WHERE SHOWN ON DRAWINGS IN FIGURES SHALL BE USED IN PREFERENCE TO SCALED MEASUREMENTS.



| REVISION | DATE | APPD. | AS-BUILT | DESCRIPTION |
|--|------|-------|---------------|---|
| 10201 | | | | MARINE CORPS BASE CAMP LEJEUNE, N.C. |
| DESIGNED BY: <i>J. Frantz</i> DRAWING BY: <i>J. Frantz</i> CHECKED BY: <i>J. Frantz</i> IN CHARGE: <i>J. Frantz</i> | | | | EXPANSION WATER TREATMENT FACILITIES CAMP GEIGER 600,000 GALLON RESERVOIR STRUCTURAL PLAN AND DETAILS. |
| APPROVED | | | DATE | 7/11/51 |
| APPROVED FOR BUREAU OF YARDS & DOCKS | | | SCALE GRAPHIC | SPEC. 41919 |
| DPWO FOR CHIEF OF BUREAU | | | SHEET 3 OF 9 | NO. 83255 |
| SATISFACTORY TO | | | DATE | Y & D DRAWING NO. 645301 |
| THE QUARTERMASTER GENERAL OF THE MARINE CORPS | | | | |



VALVE NOTES

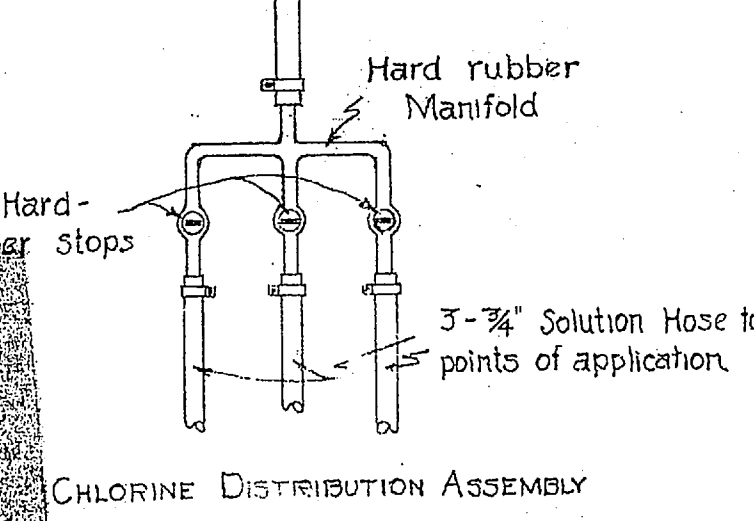
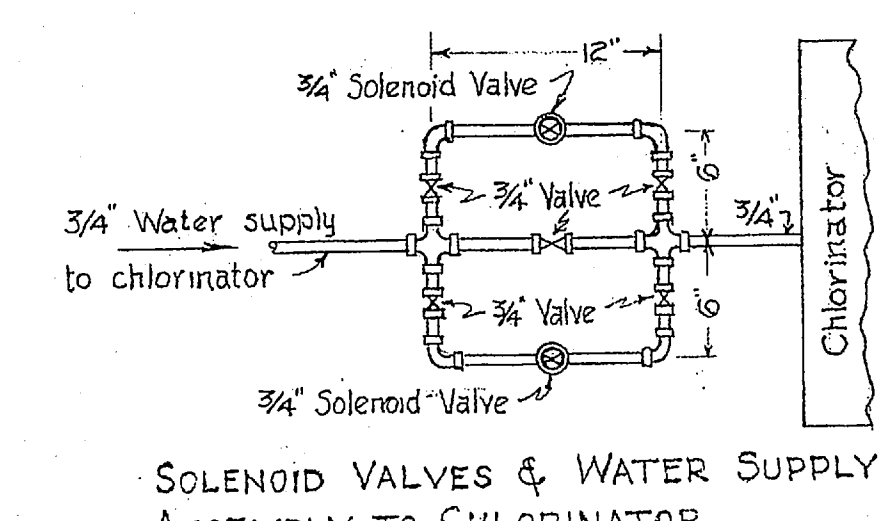
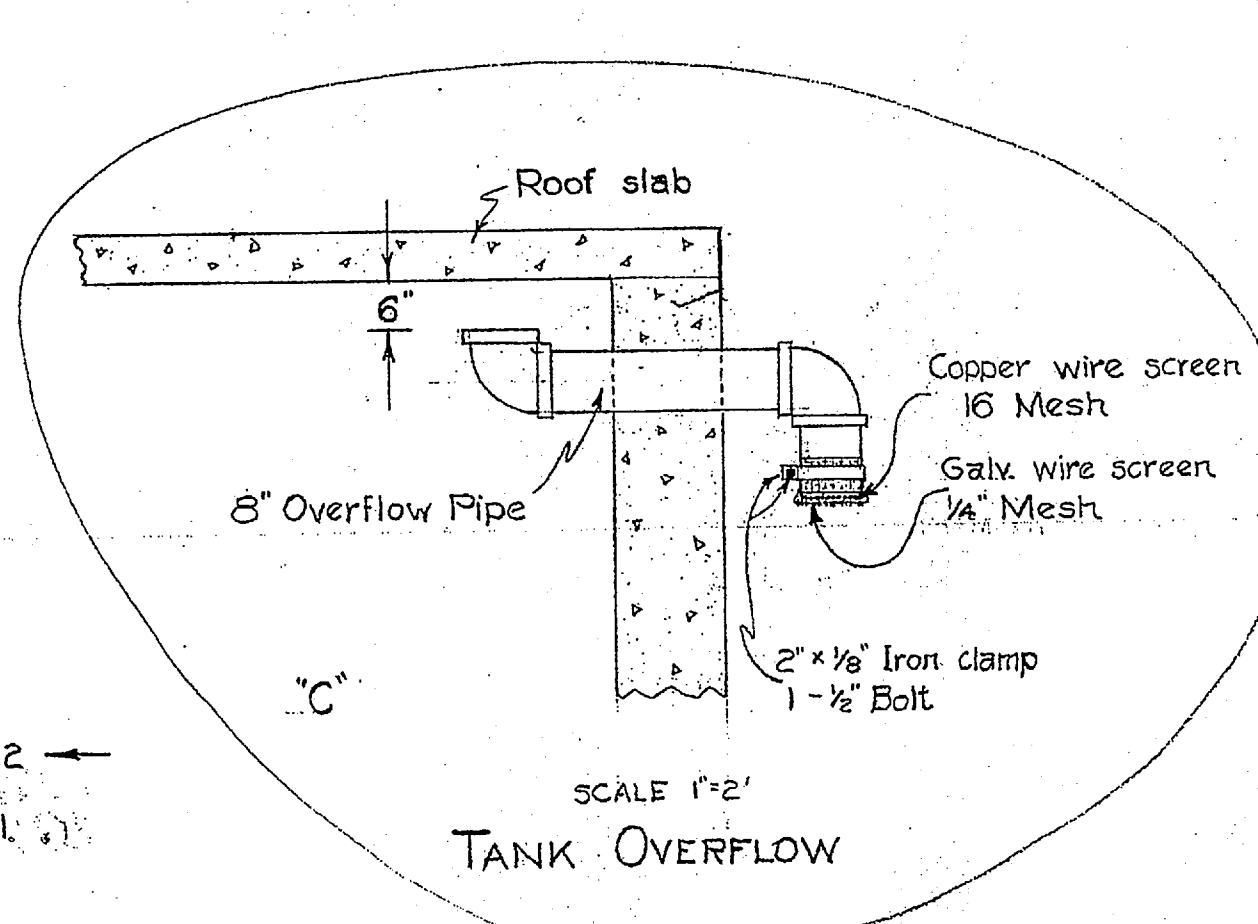
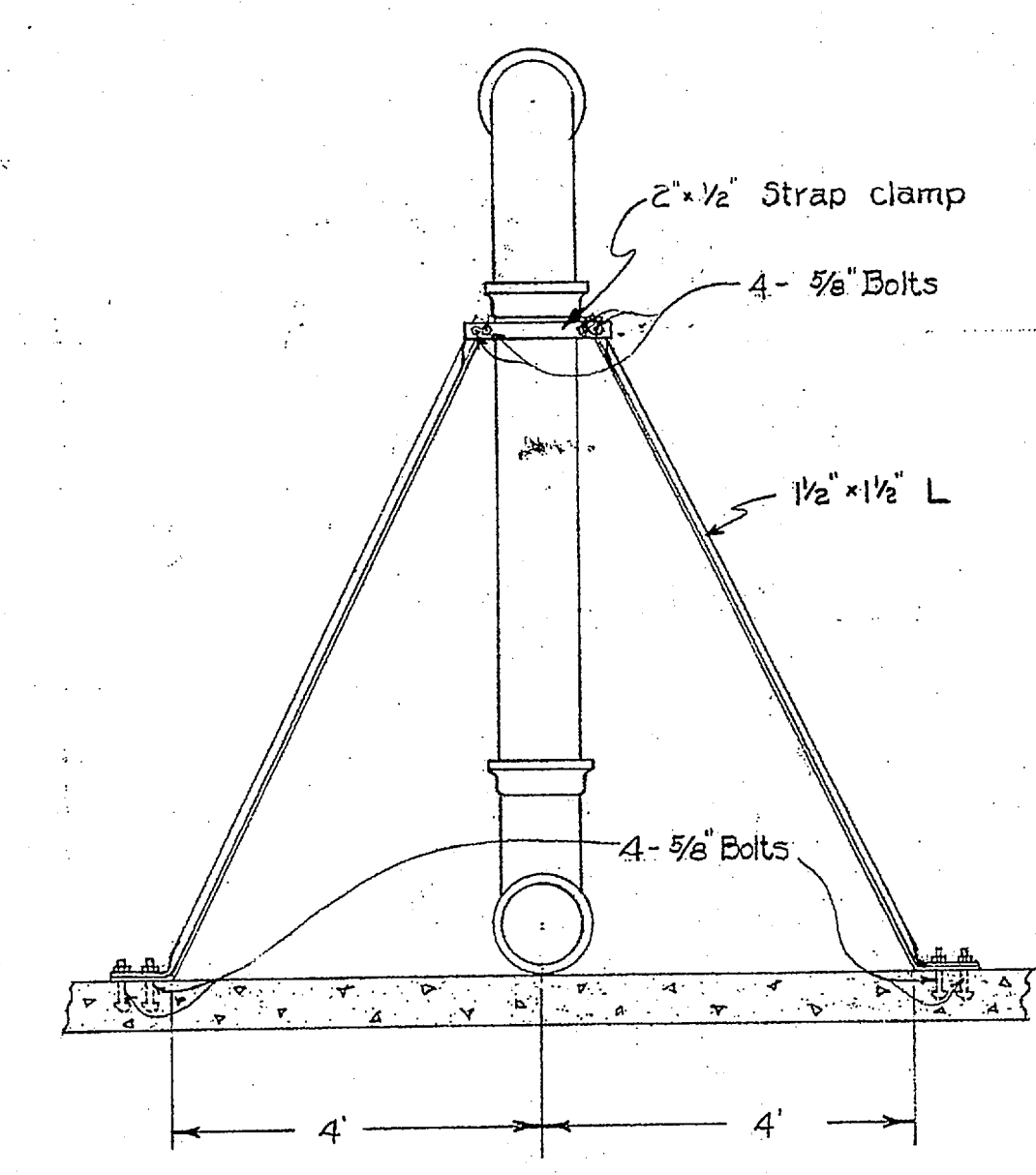
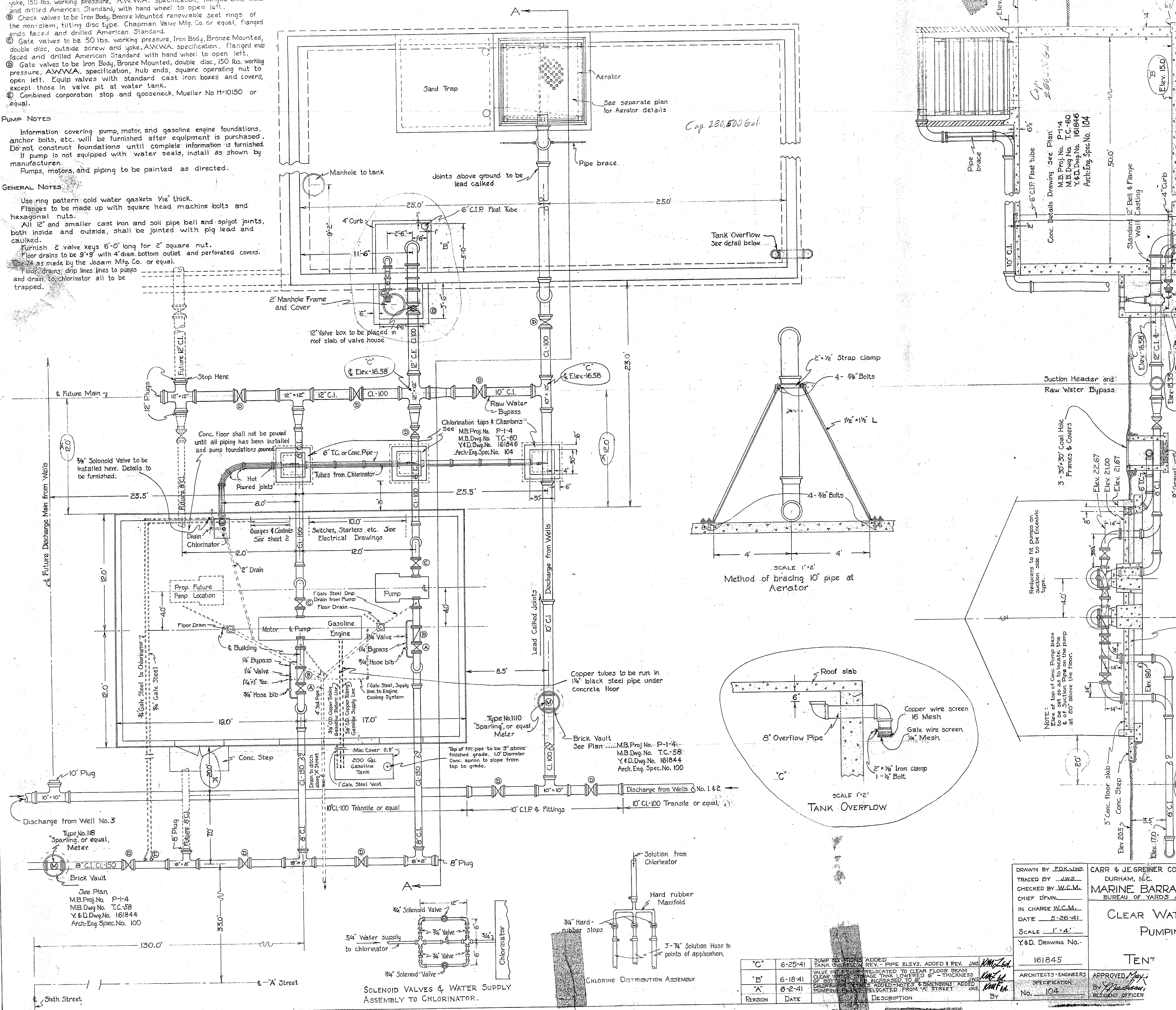
- Ⓐ Gate valves to be Iron Body, Bronze Mounted, double disc, outside screw and yoke, 150 lbs. working pressure, A.W.W.A. specification, flanged ends faced and drilled American Standard, with hand wheel to open left.
- Ⓑ Check valves to be Iron Body, Bronze Mounted, removable seat rings of the non-stam, tilting disc type. Chapman Valve Mfg. Co. or equal, flanged ends faced and drilled American Standard.
- Ⓒ Gate valves to be 150 lbs. working pressure, Iron Body, Bronze Mounted, double disc, outside screw and yoke, A.W.W.A. specification, flanged ends faced and drilled American Standard with hand wheel to open left.
- Ⓓ Gate valves to be Iron Body, Bronze Mounted, double disc, 150 lbs. working pressure, A.W.W.A. specification, hub ends, square operating nut to open left. Equip valves with standard cast iron boxes and covers, except those in valve pit at water tank.
- Ⓔ Combined corporation stop and gooseneck, Mueller No H-10150 or equal.

PUMP NOTES

Information covering pump, motor, and gasoline engine foundations, anchor bolts, etc. will be furnished after equipment is purchased. Do not construct foundations until complete information is furnished. If pump is not equipped with water seals, install as shown by manufacturer. Pumps, motors, and piping to be painted as directed.

GENERAL NOTES

Use ring pattern cold water gaskets 1/16" thick. Flanges to be made up with square head machine bolts and hexagonal nuts. All 12" and smaller cast iron and soil pipe bell and spigot joints, both inside and outside, shall be jointed with pig lead and caulked. Furnish 2 valve keys 6'-0" long for 2" square nut. Floor drains to be 9"x9" with 4" diam. bottom outlet and perforated covers. Make as made by the Josam Mfg. Co. or equal. Floor drains, drip lines to pumps and drain to chlorinator all to be trapped.

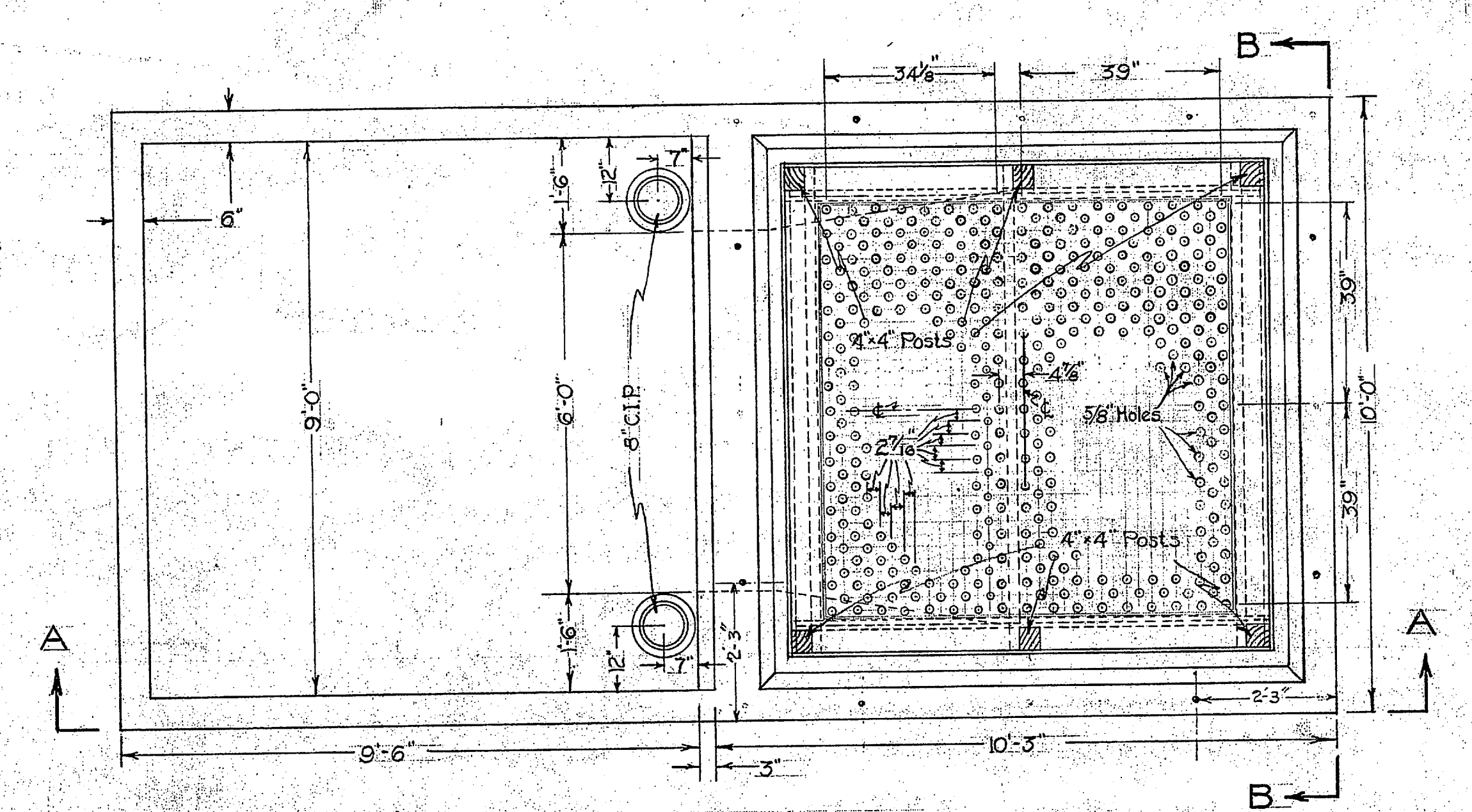
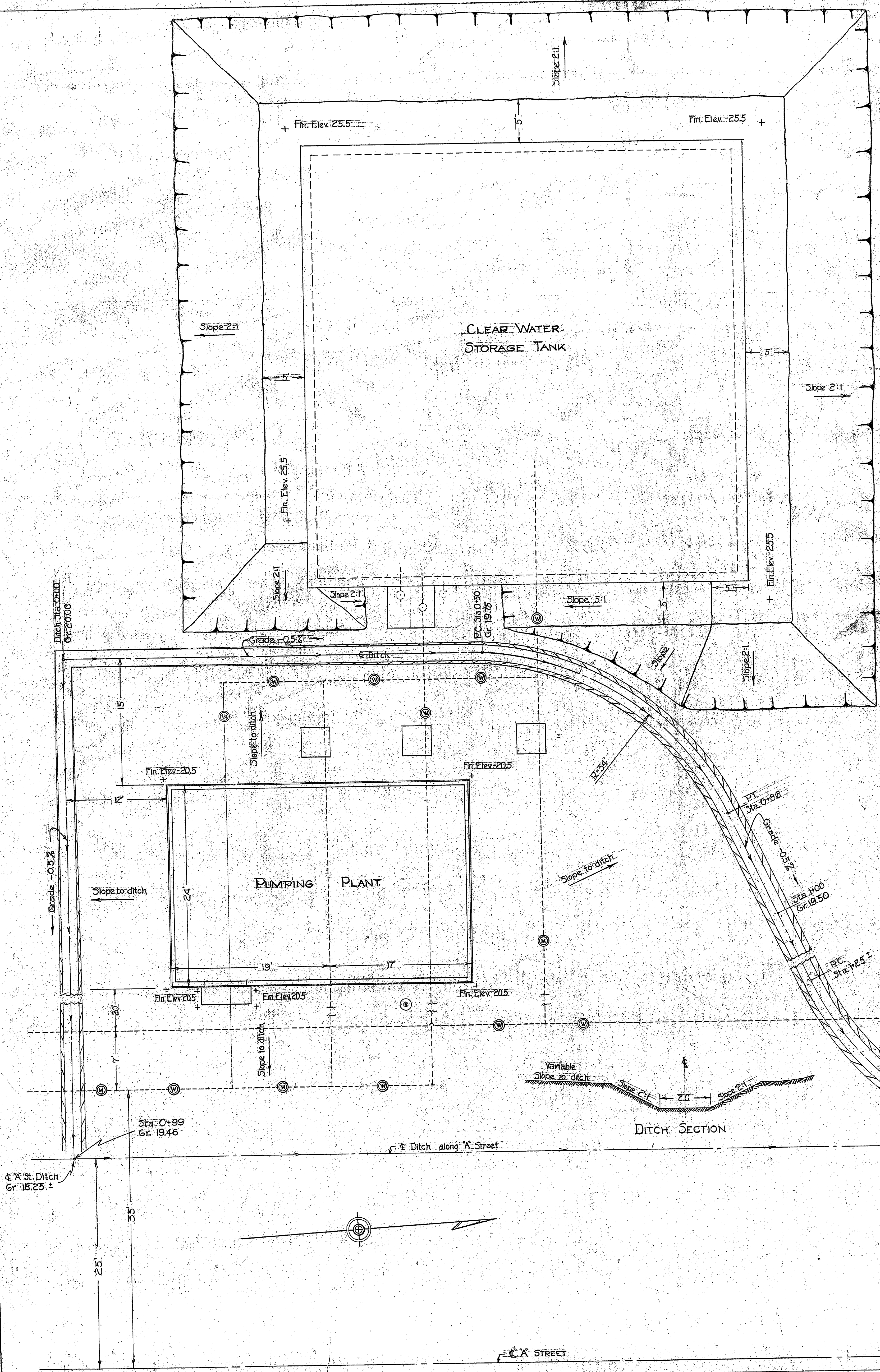


| REVISION | DATE | DESCRIPTION | BY |
|----------|---------|--|---------|
| "C" | 6-25-41 | SUMP SECTIONS ADDED TANK OVERFLOW REV. - PIPE ELEV. ADDED & REV. JWS | KMS/led |
| "B" | 6-18-41 | VALVE RELOCATED TO CLEAR FLOOR BEAM CLEARANCE STORAGE TANK LOWERED 6\"/> | KMS/led |
| "A" | 6-2-41 | CHLORINATOR RELOCATED TO CLEAR FLOOR BEAM CLEARANCE STORAGE TANK LOWERED 6\"/> | KMS/led |

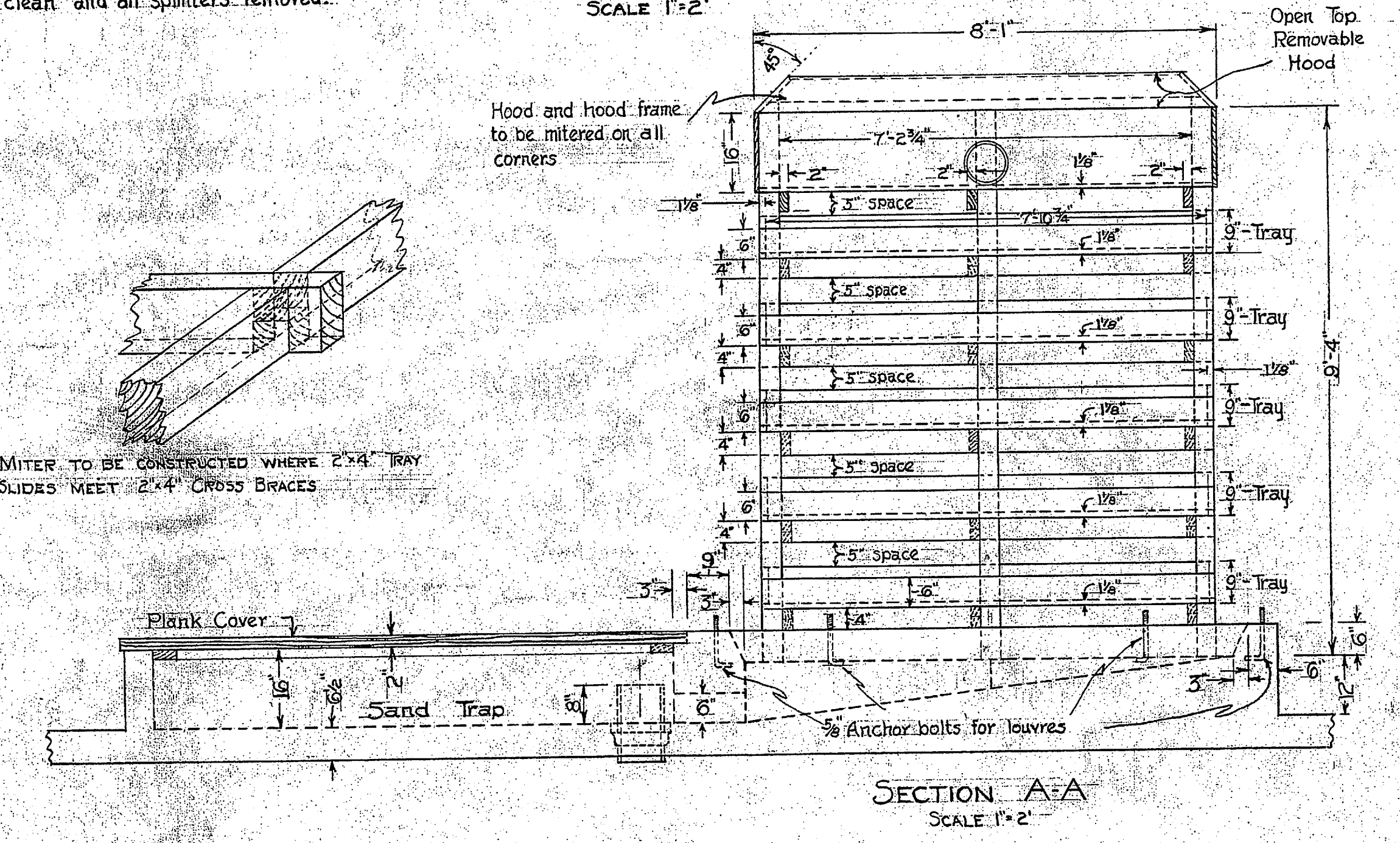
DRAWN BY EDK.SJWS
 TRACED BY JWS
 CHECKED BY W.C.M.
 CHIEF DFMN
 IN CHARGE W.C.M.
 DATE 5-26-41
 SCALE 1" = 4'
 Y&D. DRAWING No. 161845

CARR & J.E. GREINER CO.
 DURHAM, N.C.
MARINE BARRACK
 BUREAU OF YARDS AND
CLEAR WATER PUMPIN
TENT

APPROVED *[Signature]*
 BY *[Signature]*
 RESIDENT OFFICER



NOTE: Holes in top box of aerator to be cut clean and all splinters removed.



NOTES:
 All lumber to be of the size indicated on the plan when dressed.
 Trays to be substantially reinforced at all corners with corner irons. Irons to be set flush with trays and securely screwed in place.

| | |
|--------------------------------------|--|
| DRAWN BY J.W.S. | CARR & J.E. GREINER CO. - ARCHITECT-ENGINEERS' |
| TRACED BY J.W.S. | DURHAM, N.C. BALTIMORE, MD. |
| CHECKED BY W.C.M. | MARINE BARRACKS - NEW RIVER, N.C. |
| CHIEF DEPTN. | BUREAU OF YARDS AND DOCKS - U.S. NAVY |
| IN CHARGE W.C.M. | GRADING, DRAINAGE & |
| DATE June 3, 1921 | AERATOR DETAILS |
| SCALE AS INDICATED | CLEAR WATER STORAGE & PUMPING PLANT |
| Y&D. Drawing No. | TENT CAMP AREA |
| 161847 | |
| ARCHITECTS - ENGINEERS SPECIFICATION | APPROVED June 3, 1921 |
| No. 104 | By J.E. Greiner |
| | RESIDENT IN CHARGE |
| | SHEET MBP No. P-1-4 |
| | 3 of 3 MBD No. I.C.-61 |

