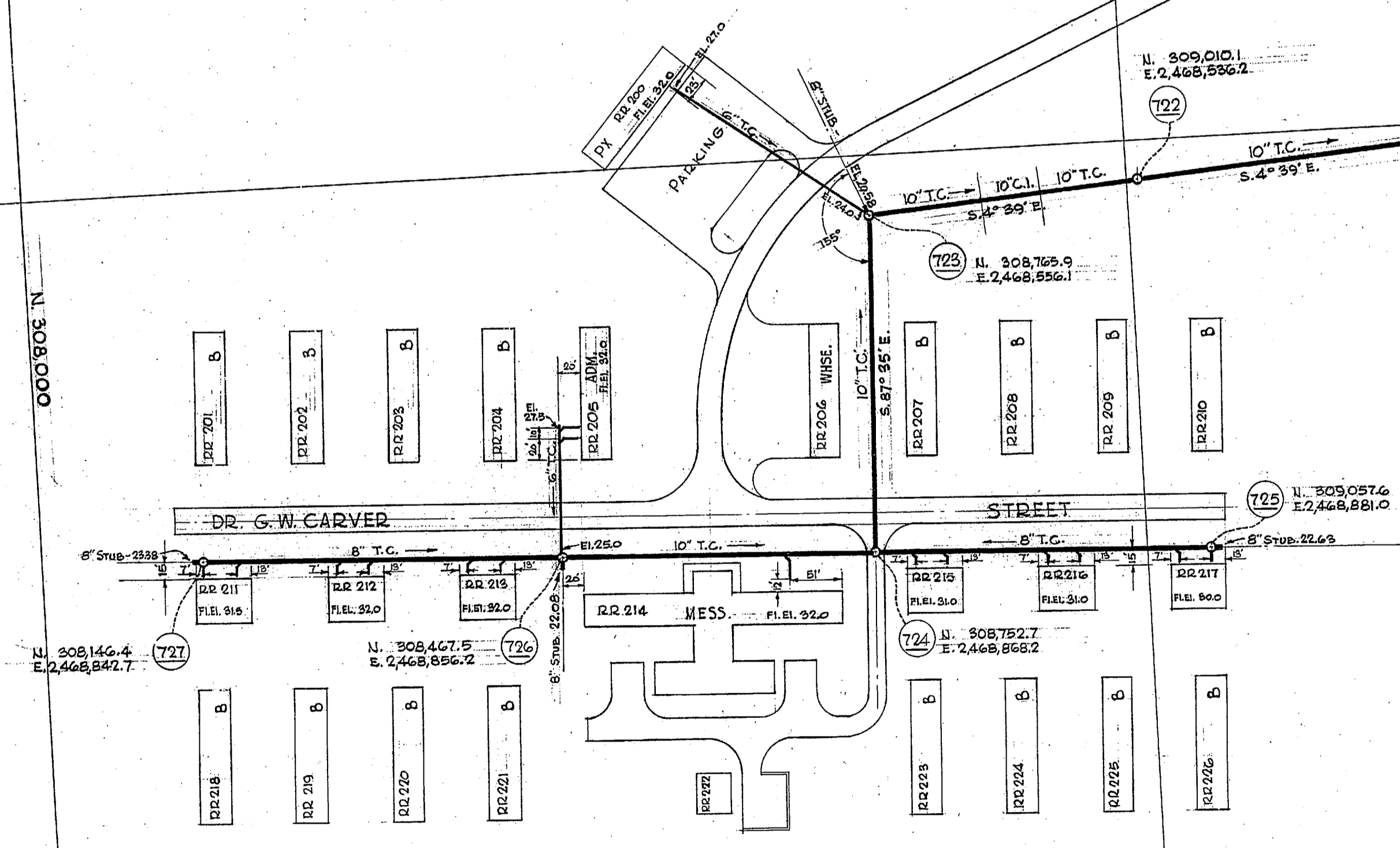


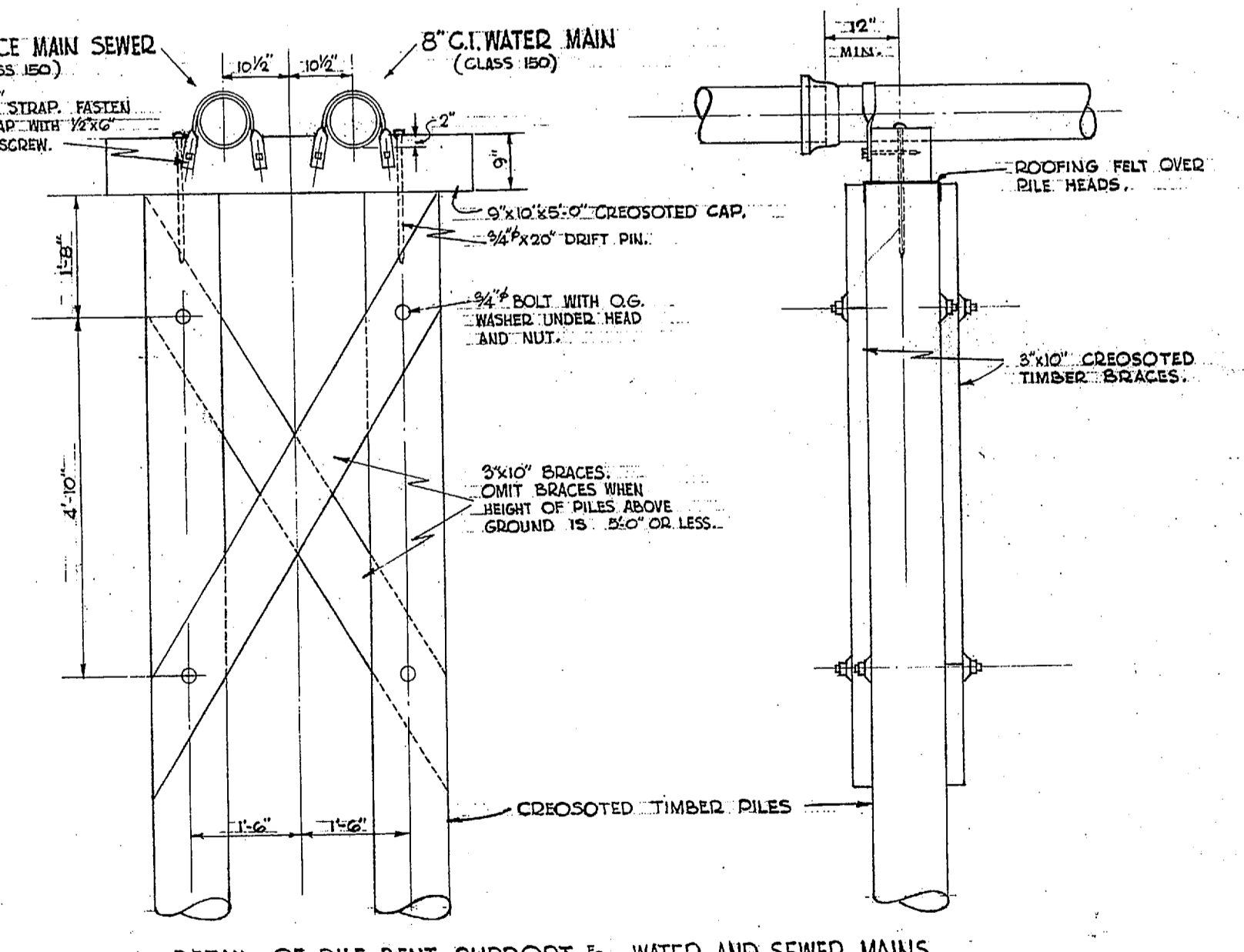
PROFILE SCALE - 1"=100' HORIZ.
1"=10' VERT.

REVISION "A"
APRIL 7, 1943

NOTE: DO NOT CONSTRUCT M.H. 720 UNTIL SEWAGE PUMPING STA. PLANS ARE COMPLETED.



PLAN SCALE - 1"=100'



DETAIL OF PILE BENT SUPPORT FOR WATER AND SEWER MAINS
SCALE 1/2"=1'-0"

- LEGEND -**
- SEWERS SHOWN
 - MANHOLES SHOWN
 - MANHOLES STAKED IN FIELD
 - WYE BRANCHES SHOWN

NOTE: All Building Connections shall be 6" T.C. unless shown otherwise.
All Wash Room Connections to have a minimum cover of 2'-6", figured from finished grade.

- TABULATION OF SEWERS -

REV.	MANHOLES		LINEAL FEET OF SEWER				TOTAL LINEAL FEET
	TOTAL NUMBER	FT.	6" T.C.	10" T.C.	8" C.I.	10" C.I.	
	5	42	500	627	598		1725
A	10	72	500	627	1642	682	332

BASED ON M.B. DWG. No. 39B

REV.	DATE	CHECKED BY
B	3-27-43	Porter

REVISION	DATE	BRIEF	R.O. IN CHARGE	BY
A	4-7-43	ADDED SEWER PLAN & PROFILE FROM M.H. 585 TO 725 - LOC. WATER M.H. COORDINATES AND DETAIL OF PILE BENT SUPPORT.	R.M. PORTER	

DRAWN BY PORTER TRACED BY PORTER CHECKED BY G.E.T. DATE APRIL 1, 1943	CARD & J.E. GREINER CO. ARCHITECT-ENGINEERS DURHAM, N.C. MARINE BARRACKS - NEW RIVER, N.C. BUREAU OF YARDS & DOCKS U.S. NAVY
Y & D DRAWING No. 288082	DIFLE RANGE COLORED TROOPS CAMP SEWERS
ARCHITECTS & ENGINEERS SPECIFICATION No. 1016	SHEET 1 OF 1 M. B. PROJ. No. P-1900-14 M. B. DRWG. No. 1416

