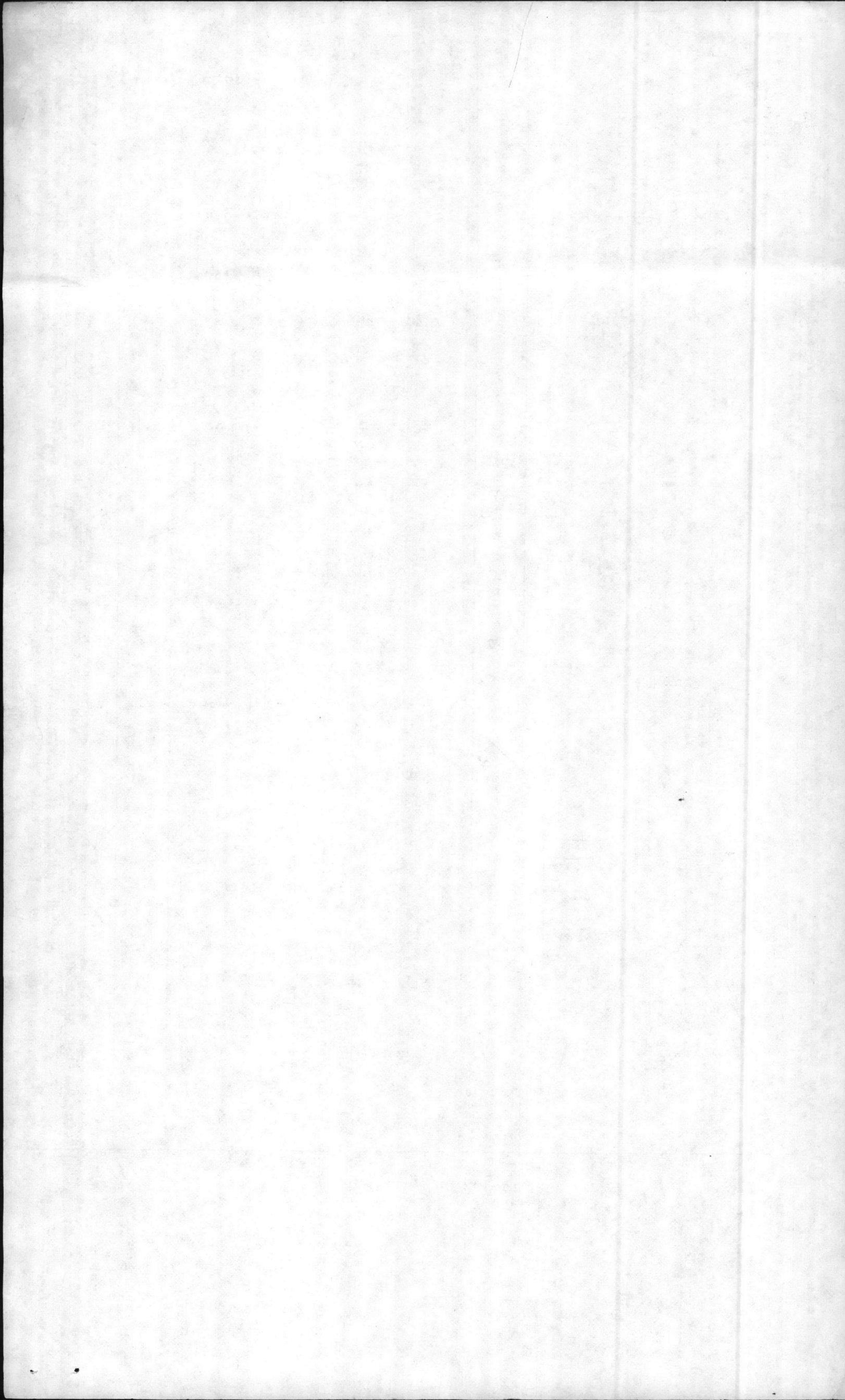


CAC	CAT CODE	1000 MAN HRS	DESCRIPTION	MAINT LEVEL CODE	REMARKS
7170	721	45.7	BACHELOR EM. BARRACKS	A/B ✓	
7410	911	37.6	IMPROVED GROUNDS	A	
7620	821	24.3	HEAT 3.5 MIL BTU AND OVER	A ✓	
7310	851	23.7	ROADS & STREETS	A/B ✓	
7720	822	21.3	STEAM & HOT WATER DISTR.	A ✓	
7130	730			A/B ✓	
	740	20.3	COMMUNITY BLDGS		
	132				MILITARY -
7530	134	15.6			C
	132				CIVILIAN -
7530	134	7.1	TELEPHONE (45.6 MAN HRS TOTAL - MIL & CIV)	A	
7540	135	14.2			MILITARY
7540	135	8.7			CIVILIAN
7450	871	15.0	DRAINAGE	B/C ✓	
7710	812	11.8	ELECTRIC DISTRIBUTION	A ✓	
7430	903	10.5	SEMI-IMPROVED GROUNDS	C	
7180	722	9.6	BACH. HSG - MESS FAC	A ✓	
7760	832	9.1	SEWAGE DISTRIBUTION	A ✓	
7650	841	8.9	WATER SUPPLY & TREAT. FAC	A ✓	
71A0	724	6.3	BACH. OFF. QUARTERS	A ✓	
7740		5.8	POTABLE WATER DISTR.	A ✓	? NON-POT 7740 POT 7730
7670	831	5.5	SEWAGE PLANTS	A ✓	
71A0	441	5.4	STORAGE BLDGS	B/C ✓	
7560	750	5.3	MORALE, WELFARE & RECR. FAC-EXT	C	GOLF, TENNIS, SWIMMING POOLS ETC
7120	210	4.2	MAINT & PROD. BLDGS.	A/B ✓	
7160	610	3.5	ADMINISTRATION BLDGS.	B ✓	
7570	170	2.0	TRAINING STRUCTURES	A/B ✓	
7140	211	1.9	MAINTENANCE FAC, AIRCRAFT	A ✓	
7630	821	1.9	HEAT .75 TO 3.5 MIL BTU	A ✓	
7350	852	1.8	SIDEWALKS	C ✓	
7150	500	1.7	MEDICAL BLDGS.	B ✓	
76D0	430	1.5	COOKING & REFRIG. EQUIP. INSTALLED IN FAC CLASS 430	A ✓	COLD STRGE
75A0	411	1.6	BULK LIQUID FUEL STRG.	A ✓	
7110	171	1.4	TRAINING BLDGS	A/B ✓	
76A0	267	1.3	AIRCRAFT PLANT OVER 25T	B ✓	
7190	723	1.3	TROOP HSG FAC - DETACHED	A/B ✓	
7550	736	1.1	AIRFIELD LIGHTING	A ✓	



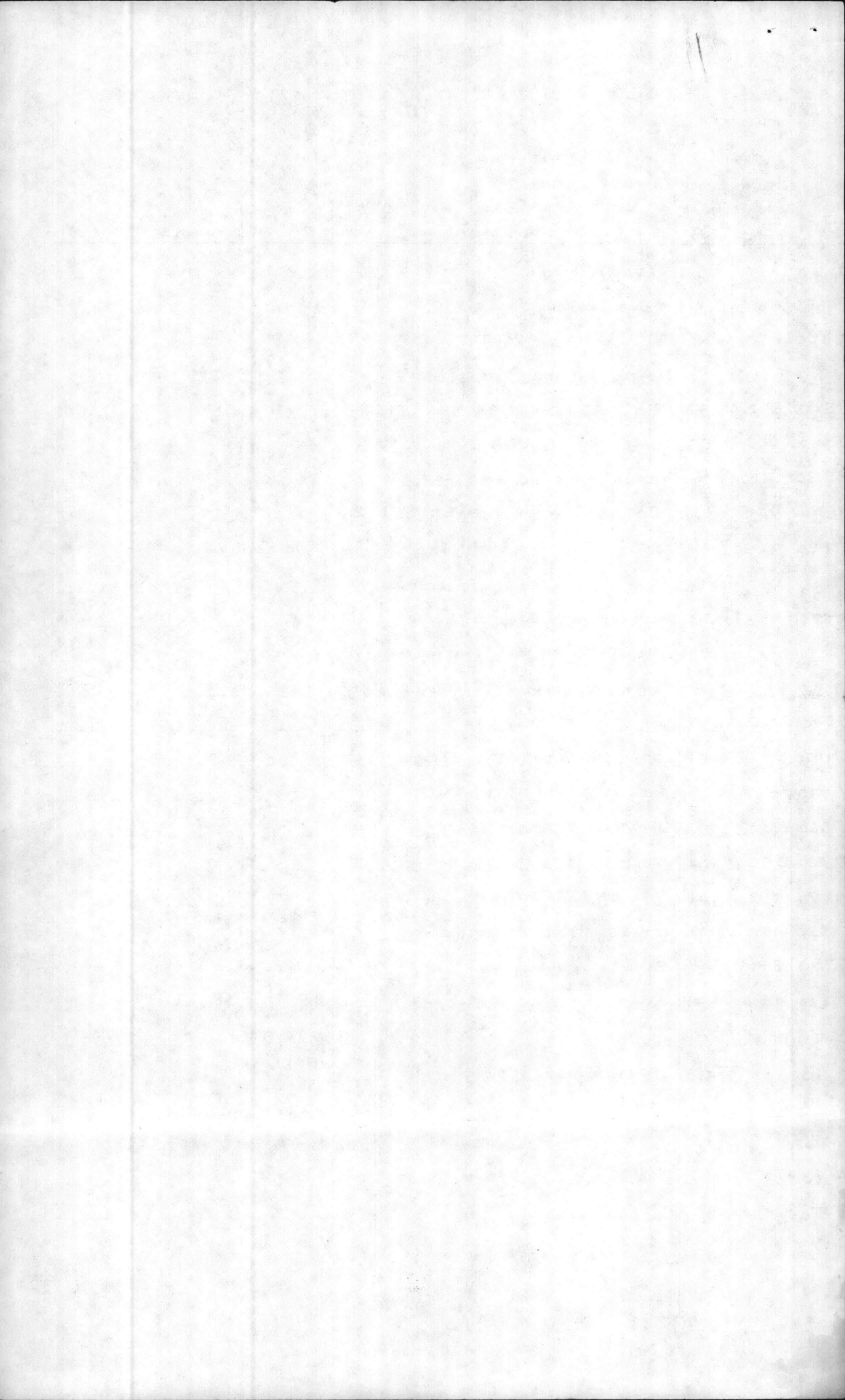


CAC	CAT CODE	1000 MAN HRS	DESCRIPTION	MAINT LEVEL CODE	REMARKS
7170	721	45.7	BACHELOR EM. BARRACKS	A/B	
7410	911	37.6	IMPROVED GROUNDS	A	
7620	821	24.3	HEAT 3.5 MIL BTU AND OVER	A	
7310	851	23.7	ROADS & STREETS	A/B	
7720	822	21.3	STEAM & HOT WATER DISTR.	A	
7130	730 740	20.3	COMMUNITY BLDGS	A/B	
7530	132 134	15.6	TELEPHONE (45.6 MAN HRS TOTAL - MIL & CIV)	A	MILITARY -
7530	132	7.1			CIVILIAN -
7540	134	14.2			MILITARY
7540	135	8.7			CIVILIAN
7450	871	15.0			DRAINAGE
7710	812	11.8	ELECTRIC DISTRIBUTION	A	
7430	903	10.5	SEMI-IMPROVED GROUNDS	B/C	
7180	722	9.6	BACH. HSG - MESS FAC	A	
7760	832	9.1	Sewage Distribution	A	
7650	841	8.9	WATER SUPPLY & TREAT. FAC	A	
71A0	724	6.3	BACH. OFF. QUARTERS	A	
7740		5.8	POTABLE WATER DISTR.	A	? NON-POT 7740 POT 7730
7670	831	5.5	SEWAGE PLANTS	A	
7140	441	5.4	STORAGE BLDGS	B/C	
7560	750	5.3	MORALE, WELFARE & RECR. FAC-EXT	C	GOLF, TENNIS, SWIMMING POOLS ETC
7120	219	4.2	MAINT & PROD. BLDGS.	A/B	
7160	610	3.5	ADMINISTRATION BLDGS.	B	
7570	170	2.0	TRAINING STRUCTURES	A/B	
7140	211	1.9	MAINTENANCE FAC, AIRCRAFT	A	
7630	821	1.9	HEAT .75 to 3.5 MIL BTU	A	
7350	852	1.8	SIDEWALKS	C	
7150	500	1.7	MEDICAL BLDGS.	B	
76D0	430	1.5	COOLING & REFRIG. EQUIP. INSTALLED IN FAC CLASS 430	A	COLD STRGE
75A0	411	1.6	BULK LIQUID FUEL STRG.	A	
7170	171	1.4	TRAINING BLDGS	A/B	
76A0	267	1.3	AIRCOND PLANT OVER ZST	B	
7190	728	1.3	TROOP HSG. FAC - DETACHED	A/B	
7550	136	1.1	AIRFIELD LIGHTING	A	



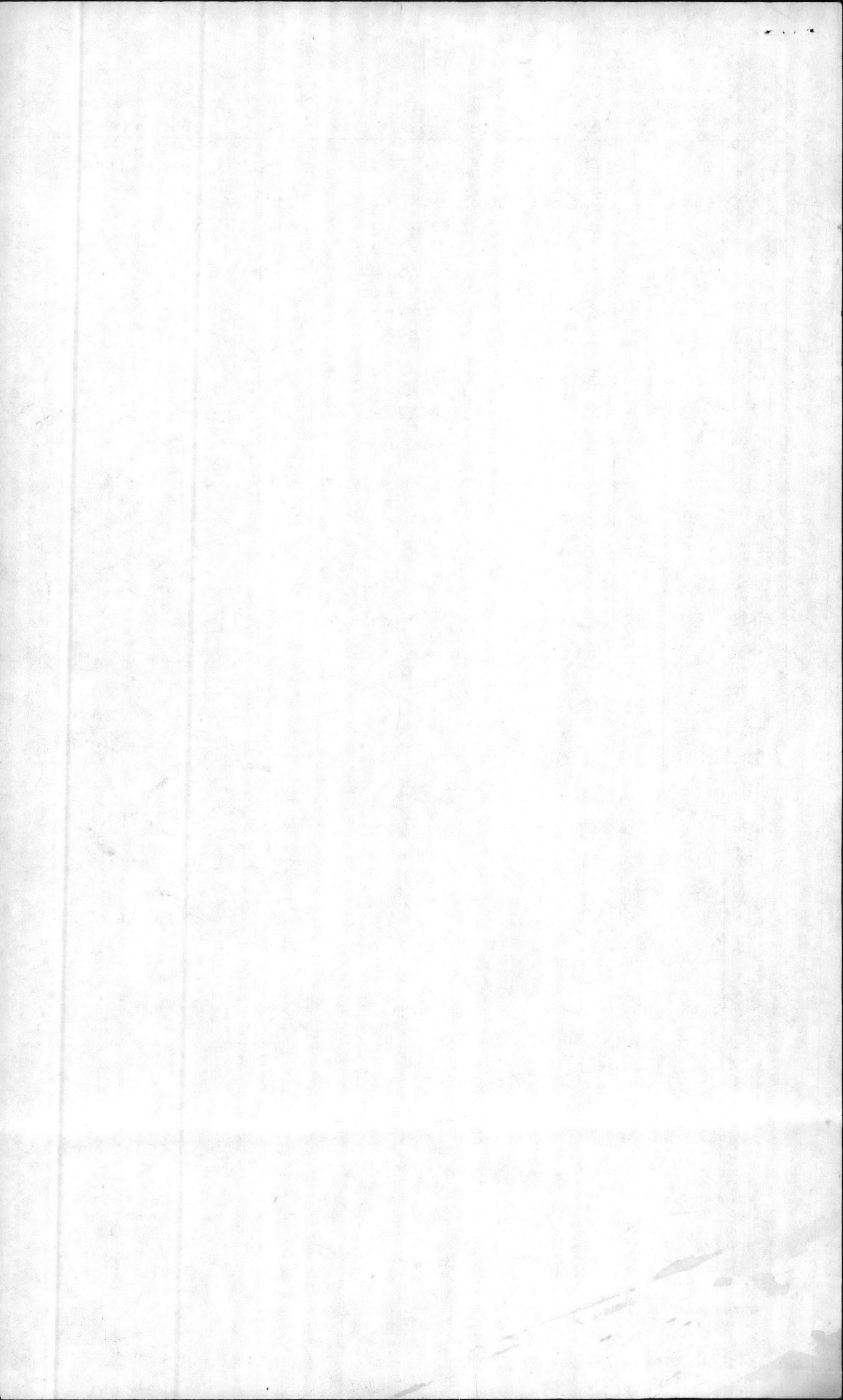


SAC	CAT CODE	1000 MAN HRS	DESCRIPTION	MAINT LEVEL CODE	REMARKS
7130	310	1.1	RESEARCH & DEV. BLDGS.	C	
71PO	430	.8	COLD STORAGE PLANTS	A	
76B0	890	.62	AIRCOND. 5-25T	B	
71ND	421	.60	AMMUNITION STRG.	A	
75LO	872	.57	FENCES, WALLS, GATES	C	
76B0	823	.56	GAS MFG PLANTS	C	
75S0	121	.51	AIRCRAFT FUEL DISP. FAC.	A	
76F0	841	.43	POT. WATER STRG FAC	B	
71S0	725	.42	EMERGENCY TROOP FAC.	C	QUONSET HUTS, TOUT CAMPS ETC
71LO	141	.30	AIRFIELD TOWER & TERMINAL BLDG	A	
7440	903	.32	UNIMPROVED GROUNDS	C	
75X0	214	.19	MAINT. TANK, AUTOMOTIVE	A/B/C	
71KO	131	.14	COMM & TRAFFIC AID BLDGS	A/B	
75Z0	120	.12	LIQUID FUEL DISP. FAC	A	
71MO	141	.11	OTHER LAND OPER'L. BLDGS	C	
7730	842	.09	POT. WATER DISTR. SYST.	A	
7330	111	.08	OTHER AIRFIELD PAVEMENT	B	
7660	826	.07	AIR COND, OVER 100T	B	
7580	390	.06	R, D, T & E FAC.	C	
71V0	213	.06	MAINT. DRY DOCK	C	
75D0	690	.06	OTHER ADMIN. STRCTRS.	C	Flagpoles, Rev. stands, etc
7790	880	.06	FIRE ALARM SYST.	A	CIV. HRS ONLY MIL HRS = 3,129
7260	153	.01	OTHER WATERFRONT FAC.	C	
SUB-TOTAL		314.38			46.8%
7810	-	62.5	PREV. MAINT INSP		9.3
7820		148.8	EMERG/SERY		22.1
7910		112.7	MAINT SHUP O'HEAD		16.8
7920		33.7	MAINT CONT'L DIV		5.0
TOTAL		672.0			



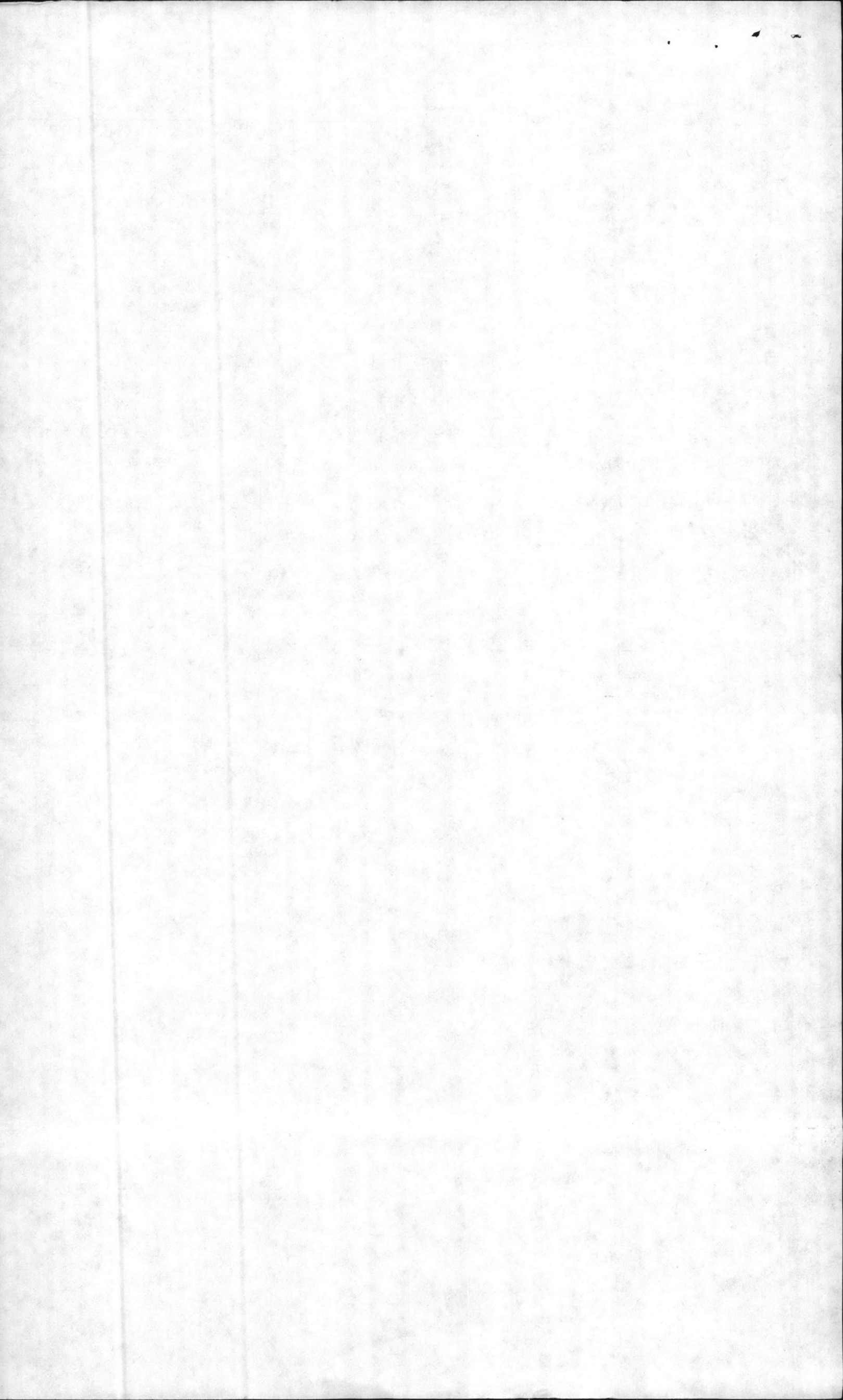


FAC	CAT CODE	1000 MAN HRS	DESCRIPTION	MAINT LEVEL CODE	REMARKS
7130	310	1.1	RESEARCH & DEV. BLDGS.	C ✓	ONE BLDG - NO 683 ENVIRONMENTAL LAB
71PO	430	.8	COLD STORAGE PLANTS	A ✓	
76B0	890	.62	AIRCOND. 5-25T	B	
71ND	421	.60	AMMUNITION STRG.	A ✓	
75L0	872	.57	FENCES, WALLS, GATES	C ✓	
7680	823	.56	GAS MFG PLANTS	C ✓	
75S0	121	.51	AIRCRAFT FUEL DISP. FAC.	A ✓	
76F0	841	.43	POT. WATER STRG FAC	B ✓	
71S0	725	.42	EMERGENCY TROOP FAC.	C ✓	QUONSET HUTS, TOUT CAMPS ETC
71L0	141	.30	AIRFIELD TOWER & TERMINAL BLDG	A ✓	
7440	903	.32	UNIMPROVED GROUNDS	C	
75X0	214	.19	MAINT. TANK, AUTOMOTIVE	A/B/C ✓	
71K0	131	.14	COMM & TRAFFIC AID BLDGS	A/B	
7520	120	.12	LIQUID FUEL DISP. FAC	A ✓	
71M0	141	.11	OTHER LAND OPER'L. BLDGS	C ✓	
7730	842	.09	POT. WATER DISTR. SYST.	A	
7330	111	.08	OTHER AIRFIELD PAVEMENT	A ✓	
7660	826	.07	AIR COND, OVER 100T	B	
7580	390	.06	R, D, T & E FAC.	C ✓	
71V0	213	.06	MAINT. DRY DOCK	C ✓	
75D0	690	.06	OTHER ADMIN. STRCTRS.	C	Flagpoles, Rev. stands, etc
7790	880	.06	FIRE ALARM SYST.	A	CIV. HRS ONLY MIL HRS = 3,129
7260	153	.01	OTHER WATERFRONT FAC.	C ✓	
SUB-TOTAL		314.38			46.8 %
7810	-	62.5	PREV. MAINT INSP		9.3
7820		148.8	EMERG/SERY		22.1
7910	-	112.7	MAINT. SHOP O'HEAD		16.8
7920		33.7	MAINT CONT'L DIV		5.0
TOTAL		672.0			



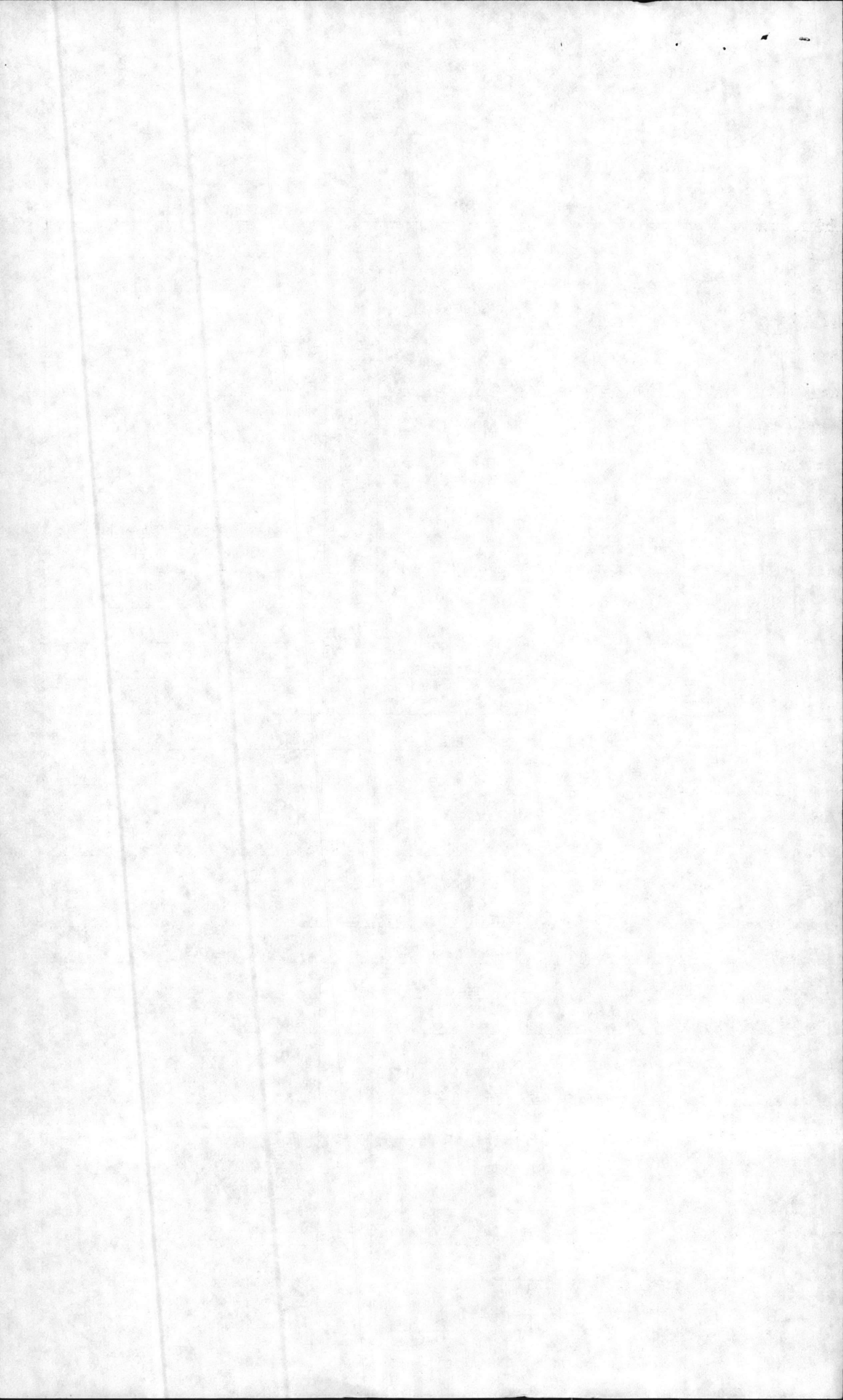


SAC	CAT CODE	1000 MAN HRS	DESCRIPTION	MAINT LEVEL CODE	REMARKS
7130	310	1.1	RESEARCH & DEV. BLDGS.	C ✓	ONE BLDG - NO 683 ENVIRONMENTAL LAB
71PO	430	.8	COLD STORAGE PLANTS	A ✓	
7680	890	.62	AIRCOND. 5-25T	B	
71NO	421	.60	AMMUNITION STRG.	A ✓	
75LO	872	.57	FENCES, WALLS, GATES	C ✓	
7680	823	.56	GAS MFG PLANTS	C ✓	
75SO	121	.51	AIRCRAFT FUEL DISP. FAC.	A ✓	
76FO	841	.43	POT. WATER STRG FAC	B ✓	
71SO	725	.42	EMERGENCY TROOP FAC.	C ✓	QUONSET HUTS, TOUT CAMPS ET
71LO	141	.30	AIRFIELD TOWER & TERMINAL BLDG	A ✓	
7440	903	.32	UNIMPROVED GROUNDS	C	
75XO	214	.19	MAINT. TANK, AUTOMOTIVE	A/B/C ✓	
71KO	131	.14	COMM & TRAFFIC AID BLDGS	A/B	
7520	120	.12	LIQUID FUEL DISP. FAC	A ✓	
71MO	141	.11	OTHER LAND OPER'L. BLDGS	C ✓	
7730	842	.09	POT. WATER DISTR. SYST.	A	
7330	111	.08	OTHER AIRFIELD PAVEMENT	<del>A</del> ✓	
7660	826	.07	AIR COND, OVER 100T	B	
7580	390	.06	R, D, T & E FAC.	C ✓	
71VO	213	.06	MAINT. DRY DOCK	C ✓	
75DO	690	.06	OTHER ADMIN. STRCTRS.	C ✓	Flagpoles, Row. stands, etc
7790	880	.06	FIRE ALARM SYST.	A ✓	CIV. HRS ONLY MIL HRS = 3,129
7260	153	.01	OTHER WATER-FRONT FAC.	C ✓	
SUB-TOTAL		314.38			46.870
7810	-	62.5	PREV. MAINT INSP		9.3
7820		148.8	EMERG/SERY		22.1
7910		112.7	MAINT. SHOP O'HEAD		16.8
7920		33.7	MAINT CONT'L DIV		5.0
TOTAL		672.0			



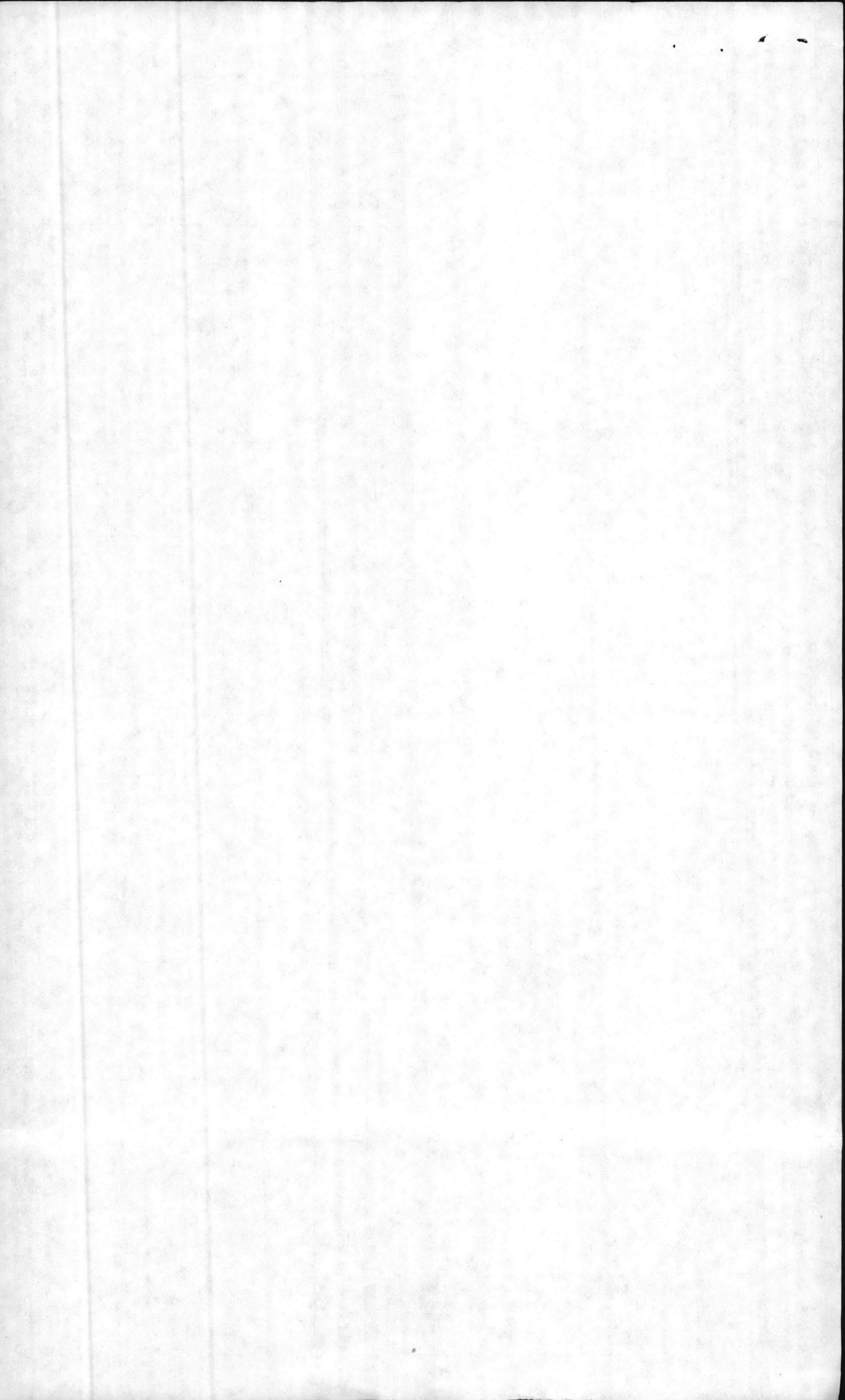


FAC	CAT CODE	1000 MAN HRS	DESCRIPTION	MAINT LEVEL CODE	REMARKS
130	310	1.1	RESEARCH & DEV. BLDGS.	C	
140	430	.8	COLD STORAGE PLANTS	A	
160	890	.62	AIRCOND, 5-25T	B	
170	421	.60	AMMUNITION STRG.	A	
180	872	.57	FENCES, WALLS, GATES	C	
190	823	.56	GAS MFG PLANTS	C	
200	121	.51	AIRCRAFT FUEL DISP. FAC.	A	
210	841	.43	POT. WATER STRG FAC	B	
220	725	.42	EMERGENCY TROOP FAC.	C	QUONSET HUTS, TENT CAMPS ETC
230	141	.30	AIRFIELD TOWER & TERMINAL BLDG	A	
240	903	.32	UNIMPROVED GROUNDS	C	
250	214	.19	MAINT. TANK, AUTOMOTIVE	A/B/C	
260	131	.14	COMM & TRAFFIC AID BLDGS	A/B	
270	120	.12	LIQUID FUEL DISP. FAC	A	
280	141	.11	OTHER LAND OPER'L. BLDGS	C	
290	842	.09	POT. WATER DISTR. SYST.	A	
300	111	.08	OTHER AIRFIELD PAVEMENT	B	
310	826	.07	AIR COND, OVER 100T	B	
320	390	.06	R, D, T & E FAC.	C	
330	213	.06	MAINT. DRY DOCK	C	
340	690	.06	OTHER ADMIN. STRCTRS.	C	Flagpoles, Rev. stands, etc
350	880	.06	FIRE ALARM SYST.	A	CIV. HRS ONLY MIL HRS = 3,129
360	153	.01	OTHER WATERFRONT FAC.	C	
SUB-TOTAL		314.38			46.8%
810	-	62.5	PREV. MAINT INSP		9.3
820		148.8	EMERG/SERY		22.1
830		112.7	MAINT SHIP O'HEAD		16.8
840		33.7	MAINT CONT'L DIV		5.0
TOTAL		672.0			



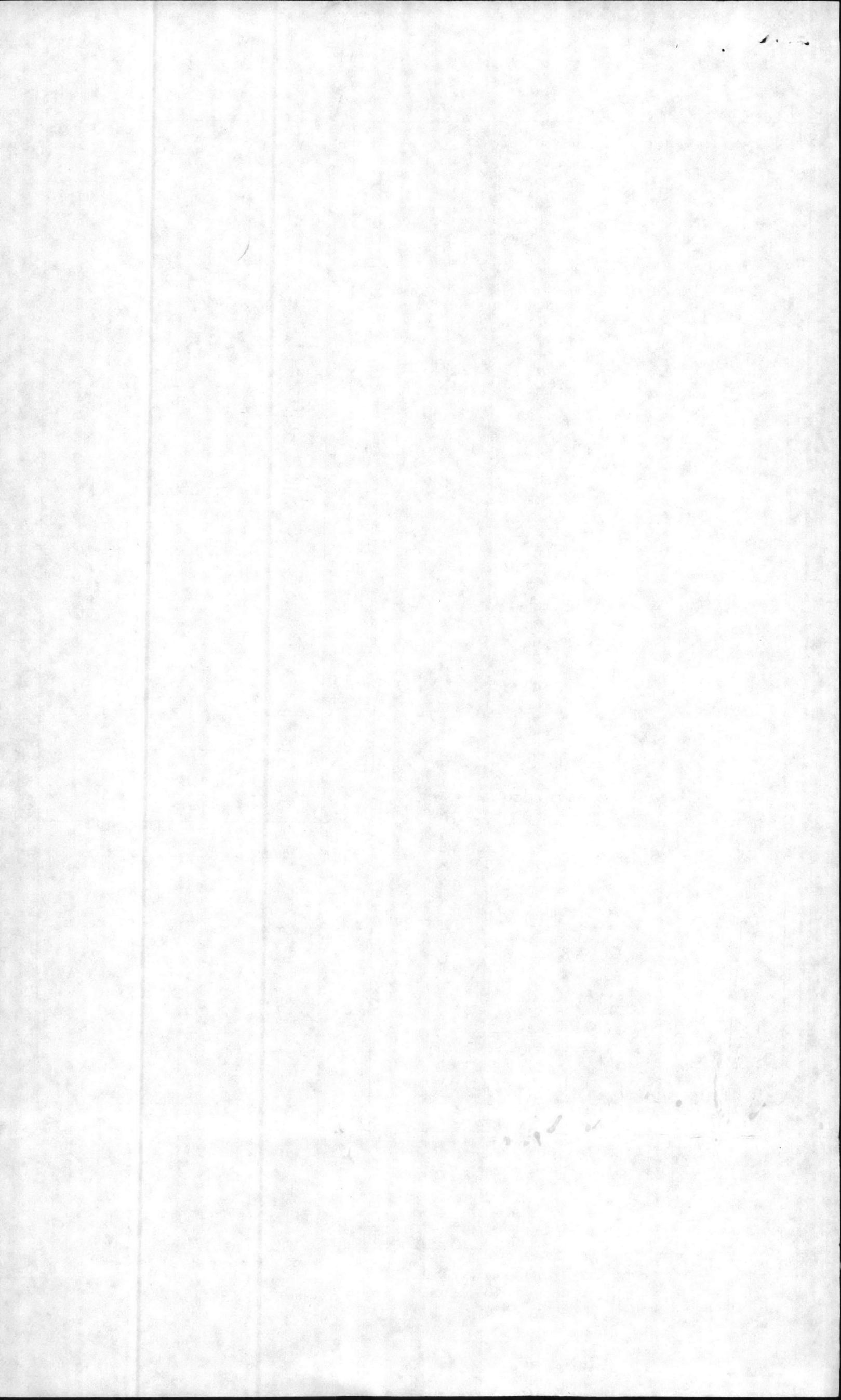


AC	CAT CODE	1000 MAW HRS	DESCRIPTION	MAINT LEVEL CODE	REMARKS	
170	721	45.7	BACHELOR EM. BARRACKS	A/B		
410	911	37.6	IMPROVED GROUNDS	A		
7620	821	24.3	HEAT 3.5 MIL BTU AND OVER	A		
310	851	23.7	ROADS & STREETS	A/B		
720	822	21.3	STEAM & HOT WATER DISTR.	A		
	730			A/B		
130	740	20.3	COMMUNITY BLDGS			
	132				MILITARY -	
530	134	15.6			CIVILIAN -	
	132	7.1	TELEPHONE (45.6 MAW HRS TOTAL - MIL & CIV)	A	MILITARY	
530	134				CIVILIAN	
540	135	14.2				MILITARY
540	135	8.7				CIVILIAN
7450	871	15.0	DRAINAGE	B/C		
710	812	11.8	ELECTRIC DISTRIBUTION	A		
7430	903	10.5	SEMI-IMPROVED GROUNDS	B		
7180	722	9.6	BACH. HSG - MESS FAC	A		
760	832	9.1	Sewage Distribution	A		
7650	841	8.9	WATER SUPPLY & TREAT. FAC	A		
71A0	724	6.3	BACH. OFF. QUARTERS	A		
740		5.8	POTABLE WATER DISTR.	A	? NON-POT 7740 POT 7730	
7670	831	5.5	SEWAGE PLANTS	A		
7140	441	5.4	STORAGE BLDGS	B/C		
7560	750	5.3	MORALE, WELFARE & RECR. FAC-EXT	C	GOLF, TENNIS, SWIMMING POOL ETC	
7120	210	4.2	MAINT & PROD. BLDGS.	A/B		
7160	610	3.5	ADMINISTRATION BLDGS.	B		
7570	170	2.0	TRAINING STRUCTURES	A/B		
7140	211	1.9	MAINTENANCE FAC, AIRCRAFT	A		
7630	821	1.9	HEAT .75 TO 3.5 MIL BTU	A		
7350	852	1.8	SIDEWALKS	C		
7150	500	1.7	MEDICAL BLDGS.	B		
76D0	430	1.5	COOLING & REFRIG. EQUIP. INSTALLED IN FAC CLASS 430	A	COLD STRGE	
75A0	411	1.6	BULK LIQUID FUEL STRG.	A		
7770	171	1.4	TRAINING BLDGS	A/B		
76A0	267	1.3	AIR COND. PLANT OVER ZST	B		
7190	728	1.3	TROOP HSG FAC - DETACHED	A/B		
7550	136	1.1	AIRFIELD LIGHTING	A		





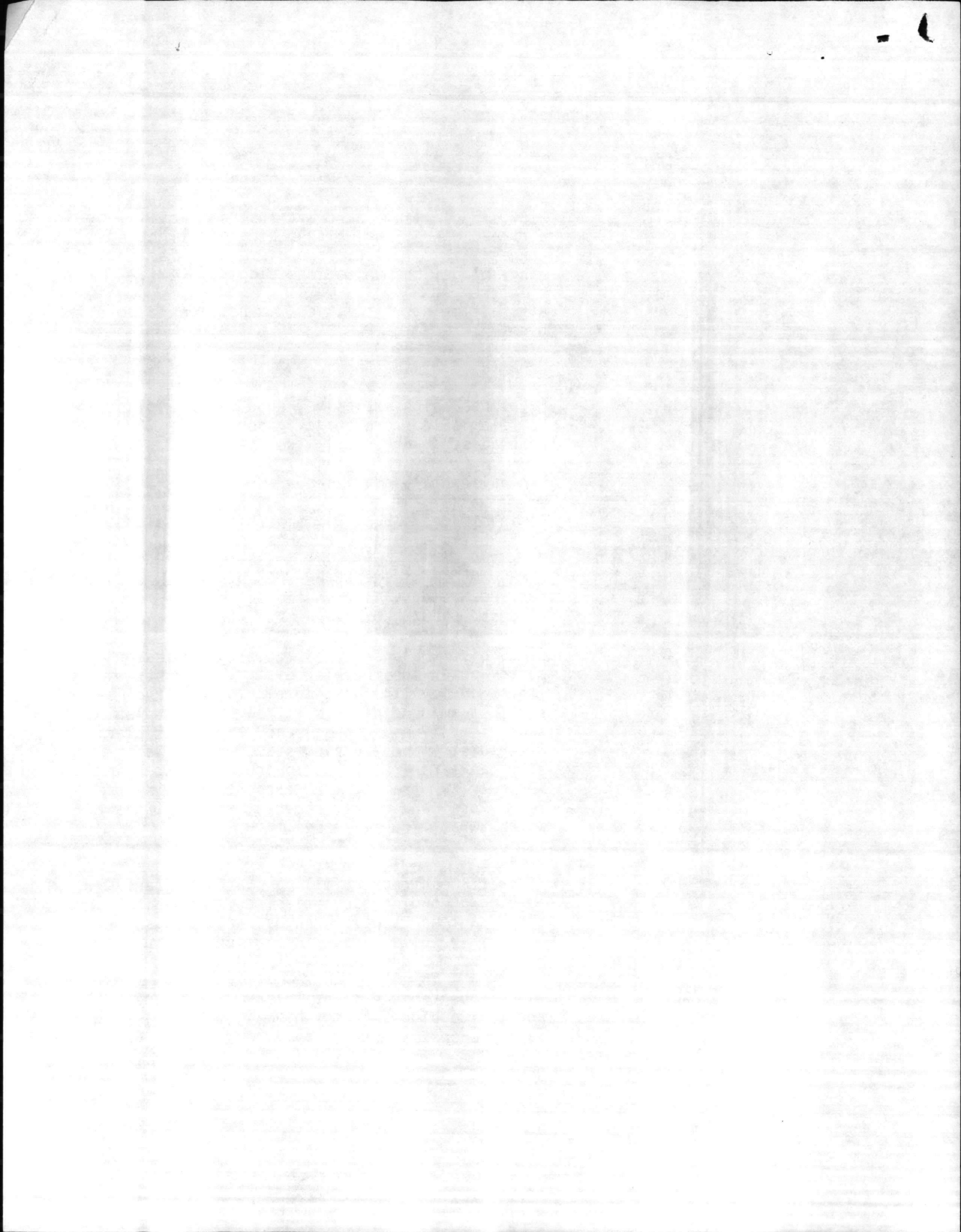
AC	CAT CODE	1000 MAN HRS	DESCRIPTION	MAINT LEVEL CODE	REMARKS
170	721	45.7	BACHELOR EM. BLDGS	A/B ✓	
410	911	37.6	IMPROVED GROUNDS	A	
620	821	24.2	HEAT 3.5 MIL BTU AND OVER	A ✓	
310	851	23.7	ROADS & STREETS	A/B ✓	
720	822	21.3	STEAM & HOT WATER DISTR.	A ✓	
	730			A/B ✓	
130	740	20.3	COMMUNITY BLDGS	A/B	
	132				MILITARY -
530	134	15.6	TELEPHONE (45.6 MAN HRS TOTAL - MIL & CIV)		C CIVILIAN -
530	132	7.1		A	MILITARY
540	134	14.2			CIVILIAN
540	135	8.7			MILITARY CIVILIAN
450	871	15.0	DRAINAGE	B/C ✓	
710	812	11.8	ELECTRIC DISTRIBUTION	A ✓	
430	903	10.5	SEMI-IMPROVED GROUNDS	C	
180	722	9.6	BACH. HSG - MESS FAC	A ✓	
760	832	9.1	Sewage Distribution	A ✓	
650	841	8.9	WATER SUPPLY & TREAT. FAC	A ✓	
110	724	6.3	BACH. OFF. QUARTERS	A ✓	
740		5.8	POTABLE WATER DISTR.	A ✓	? NON-POT 7740 POT 7730
670	831	5.5	SEWAGE PLANTS	A ✓	
710	441	5.4	STORAGE BLDGS	B/C ✓	
750	750	5.3	MORALE, WELFARE & RECR. FAC-EXT	C	GOLF, TENNIS, SWIMMING POOL ETC
7120	210	4.2	MAINT & PROD. BLDGS.	A/B ✓	
7160	610	3.5	ADMINISTRATION BLDGS.	B ✓	
7570	170	2.0	TRAINING STRUCTURES	A/B ✓	
7140	211	1.9	MAINTENANCE FAC, AIRCRAFT	A ✓	
7630	821	1.9	HEAT .75 TO 3.5 MIL BTU	A ✓	
350	852	1.8	SIDEWALKS	C ✓	
7150	500	1.7	MEDICAL BLDGS.	B ✓	
7600	430	1.5	COOLING & REFRIG. EQUIP. INSTALLED IN FAC CLASS 430	A ✓	COLD STRGE
540	411	1.6	BULK LIQUID FUEL STRG.	A ✓	
713	171	1.4	TRAINING BLDGS	A/B ✓	
7640	267	1.3	AIRCRAFT PLANT OVER 25T	B ✓	
7190	728	1.3	TROOP HSG. FAC - DETACHED	A/B ✓	
7550	336	1.1	AIRFIELD LIGHTING	A ✓	





Level of Maintenance Classifications

<u>Maint. Level Classification Code</u>	<u>Cat Code Series</u>	<u>Facility Description</u>
"A"	100	Airfield pavement, aircraft fueling facilities, airfield operational bldgs, airfield lighting, ranges/liquid fuel storage/dispensive facilities, range bldgs, communications bldgs/systems.
	200	Aircraft maint. facilities, maint. tank/automotive bldgs.
	300	None (R. D. T & E Fac)
	400	Magazines, high explosive, cold storage plant, haz/flammable storage fac, general whse MC, general strg. org., bulk fuel strg.
	500	Medical/dental facilities.
	600	Admin offices - Base/Division/Wing Hqs bldgs, Admin offices - Reg/Group Hqs.
	700	UEPH - motel style, UEPH - "G" style, EM dining fac, UOPH bldgs, fire stations, com off mess, PO mess - NCO/SNCO.
	800	Elec. distr. bldgs, Trnsfmr Stas., generator bldgs, power substa, elec distr lines, street ltg, security ltg, heating plants, htg fuel oil stro, steam/cond distr syst, swge trtmt plants, swge distr lines/pumping stas, wtr trtmt plants, water distr lines/pumping stas, wells, water strg tanks/rsrvrs, roads concrete/bitum, bridges/vehiculr, RR trackage, RR brdge/trestl, storm sewer, drainage ditch, security fencing, guard/watch twrs, fire alarm sys.
"B"	100	Aircraft wash racks, filling stations, tank/truck loading/unloading facilities, communications bldgs, antenna towers, ranges/range bldgs, helo pads, trng pools, academic/applied instruction bldgs, comm bldgs.
	200	Amphibious vehicle maint. bldgs, maint. tank/automotive bldgs, auto veh. maint. bldgs, P. W. maint. shops.
	300	None (RDT & Fac)





Maint. Level  
Classification  
Code

Cat Code  
Series

Facility Description

"B"

400

Magazines, small arms/pyrotechnic, general  
whse MC, general stg org.

500

Dispensaries.

600

Admin Offices - Bn/Sqdrn Hqs, Admin Offices -  
CO/Btry Hqs.

700

UEPH - H style, UEPH - Open Sqd bay (TC, MP),  
latrines, gate/sen house, police stations,  
chapels, post offices, exchange bldgs, cafe-  
terias, RdCross/NvyRlf, dry cing plant, laundry,  
banks, commissaries, Fam. Serv. Ctr, guest  
houses, Spec. Services bldgs, theatres, clubs,  
gymnasiums, child care ctrs, outdoor playing  
courts, ball fields, swimming pools, recrea.  
marinas/piers, base hqs/entrance signs.

800

Street lgt, heating plants, fuel oil strg,  
chld water/air cond plants, roads concrete/  
bitum, roads - dirt/shell rock, ld/unld ramps,  
parking areas, sidewalks, pedestrian brdgs,  
drainage ditch, fencing.

"C"

100

Landing craft ramps, piers, range towers,  
parade/drill fields, PFT courses.

200

Training mockups, obstacle courses, academic/  
applied instruction bldgs., ranges, vehicle  
wash/grease racks.

300

None (R. D. T. & E Fac)

400

General stg. org., general strg. shed, open  
strg area.

500

Veterinary Clinic.

600

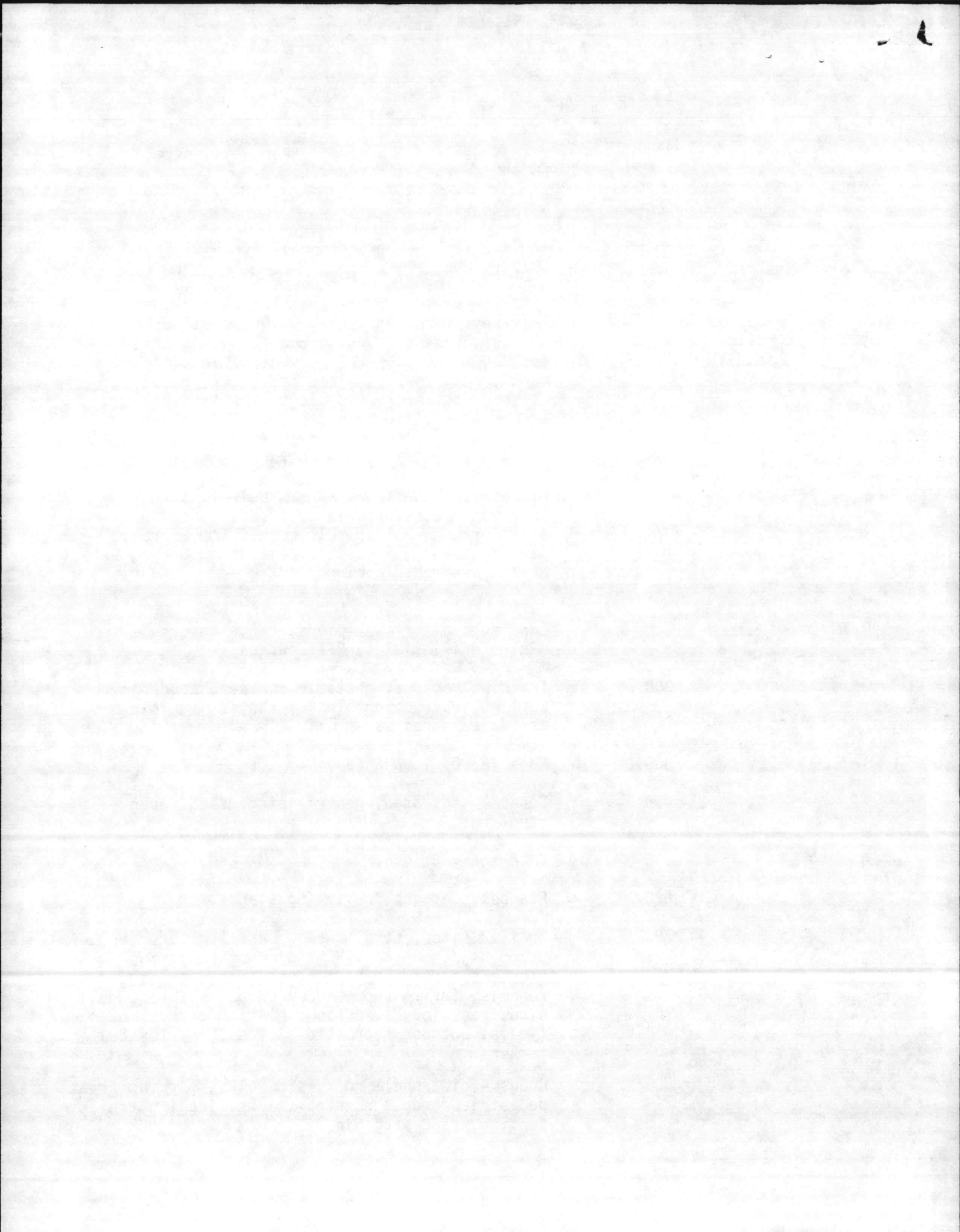
Flagpoles, signs, reviewing stands.

700

Trailer sites, strg. sheds, mess shelters (VL),  
troop hsg/emergency (MCAS(H) res area), bus  
stop shelters, public toilets (recr. areas), dog  
kennels, thrift shop, hobby shops, stables, golf  
club, rec. lodges, outdoor playing courts, ball  
fields, outdoor recreational facs., historical  
markers.

800

Roads - dirt/shell rock, sidewalks, parking areas,  
pedestrian brdgs, running tracks, jogging trails,  
fencing, sand strg bin.



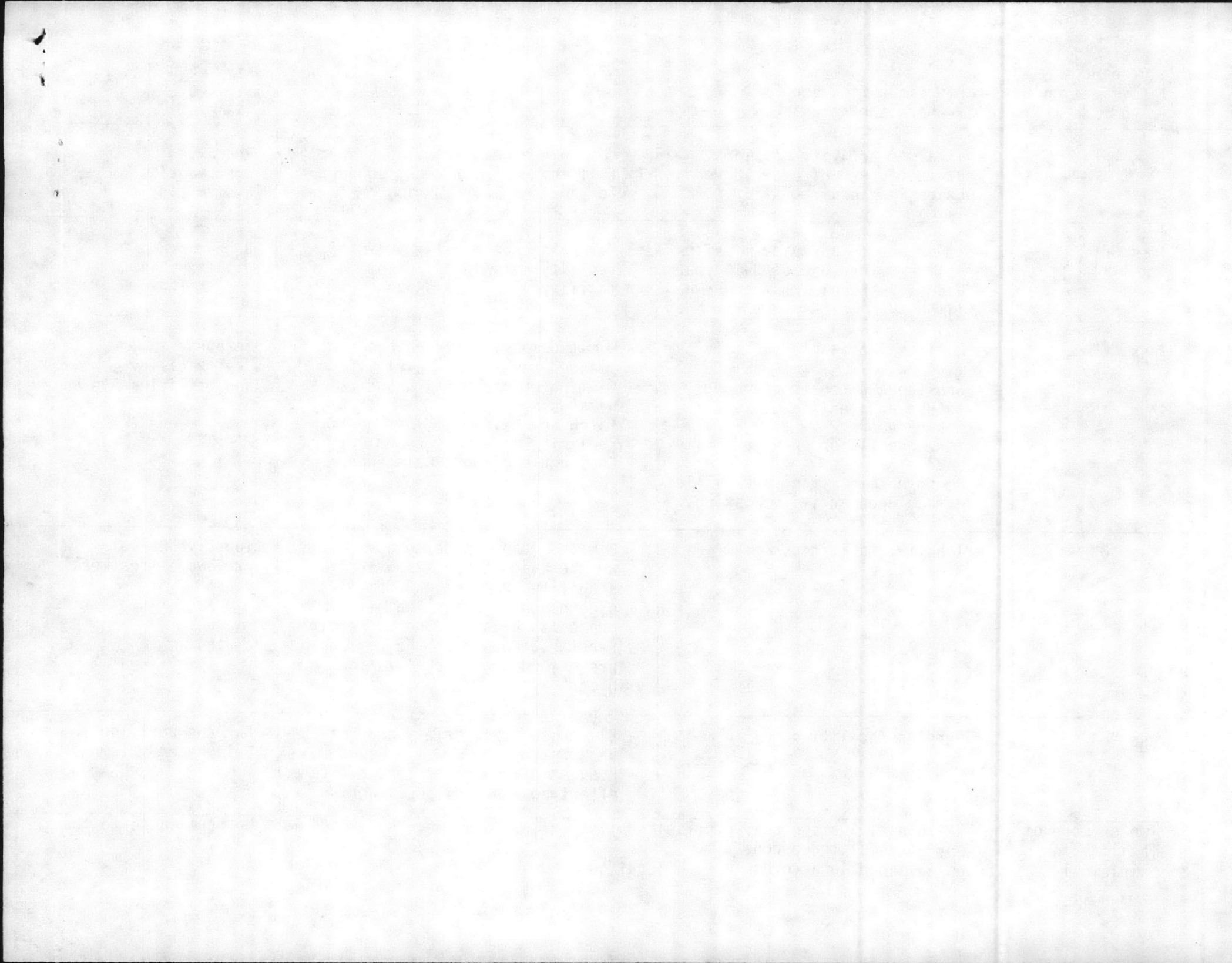


Level of Maintenance Classification

Level of Maintenance Classification Code	Key Classification Characteristics*	Level of Maintenance	Facility Example**
Class "A"	<ul style="list-style-type: none"> <li>- Vital to activity mission</li> <li>- Active future of over 10 years</li> <li>- Excessive repair cost or down time</li> </ul>	<ul style="list-style-type: none"> <li>- Maintain economically to assure full safe and efficient support for an indefinite period</li> </ul>	Runway or Elec. Distribution System
Class "B"	<ul style="list-style-type: none"> <li>- Important to activity mission</li> <li>- Active future use of 3-10 years</li> <li>- Excessive repair cost or down time</li> </ul>	<ul style="list-style-type: none"> <li>- Maintain economically to fulfill facility mission for duration of facility life or mission</li> </ul>	Barracks and Utilities System
Class "C"	<ul style="list-style-type: none"> <li>- Limited importance to activity mission</li> <li>- Substandard construction or future active life of less than 3 years</li> <li>- Infrequently or only partially used</li> <li>- No down time effect and little effect upon activity mission</li> </ul>	<ul style="list-style-type: none"> <li>- Limited maintenance on basis of planned remaining useful life</li> <li>- Eliminate fire, health and safety hazards</li> <li>- Patch and reinforce instead of replacing whatever economical</li> <li>- Consider breakdown maintenance</li> </ul>	Temporary Test Facility and Utilities System
Class "D"	<ul style="list-style-type: none"> <li>- Inactive facilities</li> </ul>	<ul style="list-style-type: none"> <li>- Limited maintenance to assure weather tightness, structural stability, protection from fire or erosion, elimination of safety or health hazards, and to permit reactivation within the period prescribed under mobilization plans</li> </ul>	Inactive Building or Sewage Treatment Plant
Class "E"	<ul style="list-style-type: none"> <li>- Surplus facilities</li> </ul>	<ul style="list-style-type: none"> <li>- Eliminate fire, safety and health hazards</li> <li>- Prevent pilferage or loss of items effecting final disposal action</li> </ul>	Surplus Building and Telephone System

\* Two or more of the "Key Classification Characteristics" listed for Class "A", "B" or "C" must be applicable to the facility for use of any of these three codes.

\*\* Sample only - to be established in accordance with local command.





MO-321. 7/68

TABLE 7

## Authorization Control for Varying Facility Levels of Maintenance

LEVEL OF MAINTENANCE CLASSIFICATION			Facility Example	WORK AUTHORIZATION LEVEL IN DOLLARS <sup>2</sup>			
Level of Maintenance Classification Code	Key Classification Characteristics <sup>1</sup>	Level of Maintenance		Work Receptionist	Shops Engineer Director of Maintenance or Utilities Divisions	MCD	Public Works Officer/ Assistant Public Works Officer
Class "A"	<ul style="list-style-type: none"> <li>● Vital to activity mission</li> <li>● Active future of over 10 years</li> <li>● Excessive repair cost or down time</li> </ul>	<ul style="list-style-type: none"> <li>● Maintain economically to assure full safe and efficient support for an indefinite period</li> </ul>	Runway or Elec. Distribution System	\$75	\$150	\$1000	Over \$1000
Class "B"	<ul style="list-style-type: none"> <li>● Important to activity mission</li> <li>● Active future use of 3-10 years</li> <li>● Excessive repair cost or down time</li> </ul>	<ul style="list-style-type: none"> <li>● Maintain economically to fulfill facility mission for duration of facility life or mission</li> </ul>	Barracks and Utilities System	\$50	\$150	\$ 750	Over \$ 750
Class "C"	<ul style="list-style-type: none"> <li>● Limited importance to activity mission</li> <li>● Substandard construction or future active life of less than 3 years</li> <li>● Infrequently or only partially used</li> <li>● No down time effect and little effect upon activity mission</li> </ul>	<ul style="list-style-type: none"> <li>● Limited maintenance on basis of planned remaining useful life</li> <li>● Eliminate fire, health and safety hazards</li> <li>● Patch and reinforce instead of replacing wherever economical</li> <li>● Consider breakdown maintenance</li> </ul>	Temporary Test Facility and Utilities System	\$30	\$100	\$ 300	Over \$ 300
Class "D"	<ul style="list-style-type: none"> <li>● Inactive facilities</li> </ul>	<ul style="list-style-type: none"> <li>● Limited maintenance to assure weather tightness, structural stability, protection from fire or erosion, elimination of safety or health hazards and to permit reactivation within the period prescribed under mobilization plans</li> </ul>	Inactive Building or Sewage Treatment Plant	\$25	-	\$ 200	Over \$ 200
Class "E"	<ul style="list-style-type: none"> <li>● Surplus facilities</li> </ul>	<ul style="list-style-type: none"> <li>● Eliminate fire, safety and health hazards</li> <li>● Prevent pilfrage or loss of items, effecting final disposal action</li> </ul>	Surplus Building and Telephone System	-	-	\$ 100	Over \$ 100

<sup>1</sup>Two or more of the "Key Classification Characteristics" listed for Class "A", "B", or "C" must be applicable to the facility for use of any of these three codes.

<sup>2</sup>Sample only - to be established in accordance with local command.

