

dlw  
Dany DDS  
Betz EB  
Jolly SKY

T-6280



UNITED STATES MARINE CORPS  
MARINE CORPS BASE  
CAMP LEJEUNE, NORTH CAROLINA 28542

IN REPLY REFER TO  
FAC/JGF/nh  
6280  
1 MAY 1984

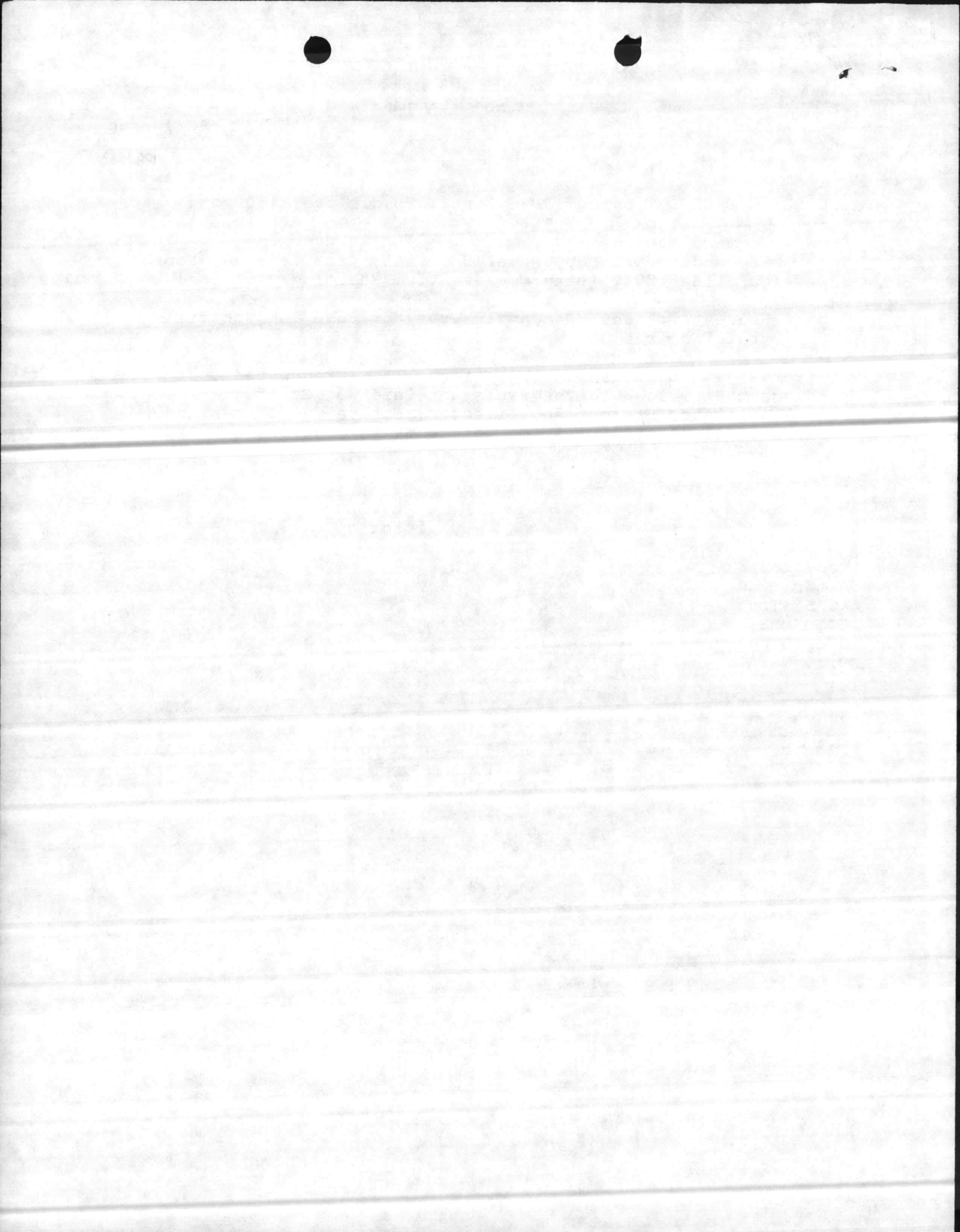
SECOND ENDORSEMENT on CO, FMSS ltr 3:JRB:dlb over 1500 dtd 9 Apr 84

From: Commanding General  
To: Commanding Officer, Naval Hospital, Camp Lejeune, North Carolina 28542 (Attn: Preventive Medicine Division)  
Subj: Request for environmental survey of Camp Johnson field training area AC

1. Forwarded for appropriate action. It is requested that your findings be provided to the Assistant Chief of Staff, Training, Base Maintenance Officer and Director, Natural Resources and Environmental Affairs Division for comments/recommendations.

M. G. LILLEY  
By direction

Copy to:  
ACmdr, Camp Johnson  
AC/S, Trng  
CO, FMSS  
BMainO  
→ Dir, NREAD



UNITED STATES MARINE CORPS  
Camp Johnson, Montford Point  
Camp Lejeune, North Carolina 28542


1500  
204  
APR 16 1984

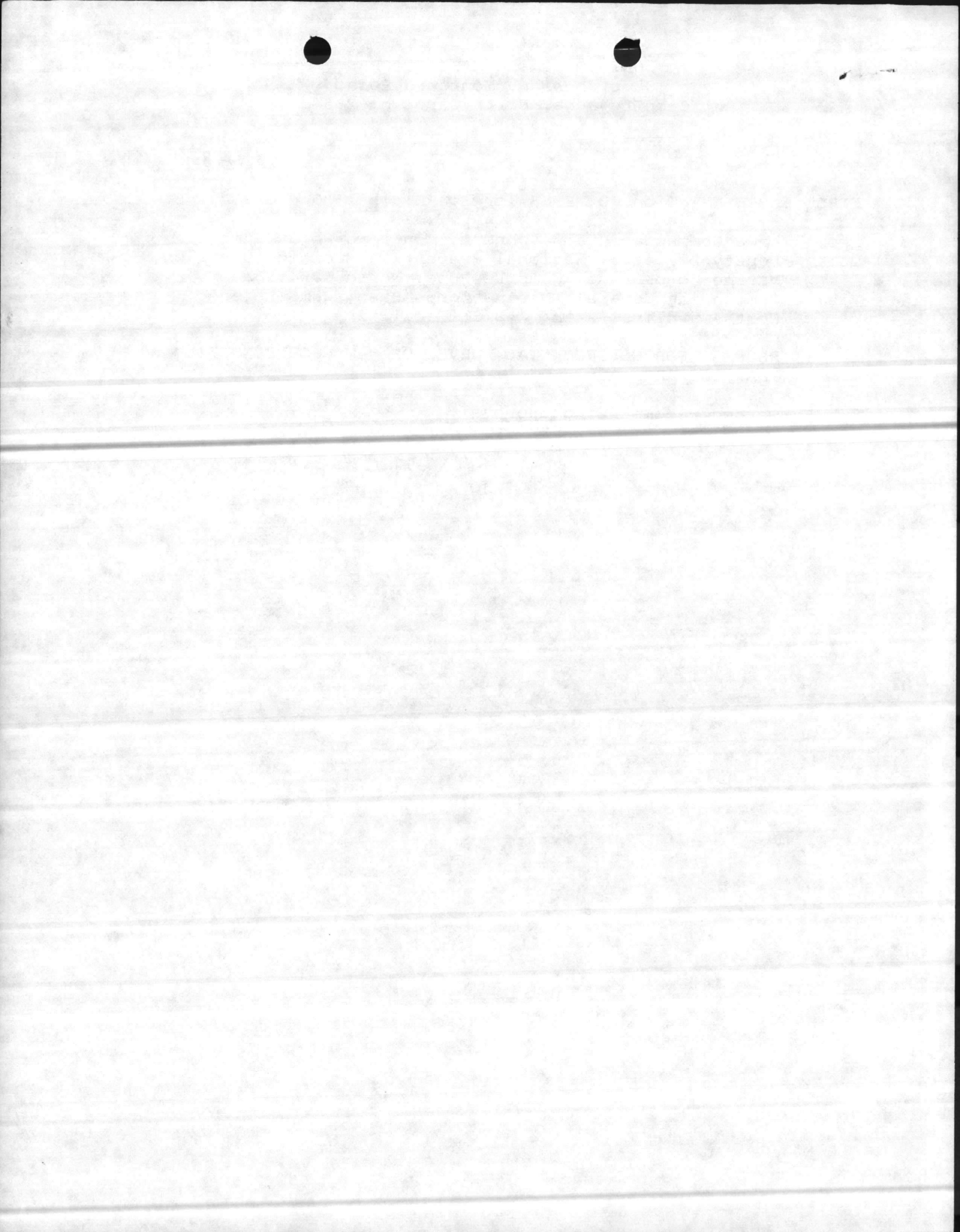
FIRST ENDORSEMENT on CO, FMSS ltr 3:JRB:dlb 1500 dtd 9 Apr 84

From: Area Commander, Camp Johnson, Montford Point  
To: Deputy Director, Regional Preventive Medicine Division,  
Marine Corps Base, Camp Lejeune, North Carolina  
Via: Commanding General, Marine Corps Base, Camp Lejeune,  
North Carolina (Attn: AC/S, Facilities)

Subj: REQUEST FOR ENVIROMENTAL SURVEY OF CAMP JOHNSON FIELD  
TRAINING AREA AC

1. Forwarded recommending approval.

  
J. R. BRANDON





UNITED STATES MARINE CORPS

FIELD MEDICAL SERVICE SCHOOL

MARINE CORPS BASE

CAMP LEJEUNE, NORTH CAROLINA 28542

IN REPLY REFER TO  
3:JRB:dlb  
1500  
9 Apr 1984

From: Commanding Officer 8254 '84 APR 13 10:50  
To: Deputy Director, Regional Preventive Medicine Division,  
MCB, Camp Lejeune, North Carolina 28542  
Via: (1) Area Commander, Camp Johnson, MCB, Camp Lejeune,  
North Carolina 28542  
(2) Commanding General, MCB, Camp Lejeune, North  
Carolina 28542  
Subj: Environmental Survey of Camp Johnson Field Training Area  
AC; request for  
Ref: (a) FM 21-10, Field Hygiene and Sanitation

1. As the Camp Johnson area expands, it has become necessary for the Field Medical Service School to relocate its field training area from the AB to the AC area. This area is bordered by the waters of Wilson Bay, and contains soil of a different composition than that of the previous area.

2. In an attempt to avoid environmental pollution by human wastes, it is requested that environmental surveys be conducted to determine what waste disposal systems would be most beneficial over an extended period (4 to 5 years). The facilities would have to accommodate approximately 120-160 persons for a 5 day period, and would be used on an 8 week cycle.

3. Due to the water table and the frequent rainfall in this area, it is felt that the use of deep pit latrines would not be effective. The routine use of "Porta-Johns" is presently being considered. However, the construction of a semi-permanent structure with a holding tank might be more cost-effective on a long range basis.

4. Point of contact for further information is LT J. R. BOYD, extension 0982/0742.

*R. S. Skelly*  
R. S. SKELLY

