

**LIGHT HAZARD PIPE SCHEDULE**

**Steel Pipe**

1 inch pipe	2 sprinklers
1-1/4 inch pipe	3 sprinklers
1-1/2 inch pipe	5 sprinklers
2 inch pipe	10 sprinklers
2-1/2 inch pipe	30 sprinklers
3 inch pipe	60 sprinklers
3-1/2 inch pipe	100 sprinklers
4 inch pipe	The maximum floor area protected by sprinklers that are supplied by one system or one riser. (52,000 sq ft)

**ORDINARY HAZARD PIPE SCHEDULE**

**Steel Pipe**

1 inch pipe	2 sprinklers
1-1/4 inch pipe	3 sprinklers
1-1/2 inch pipe	5 sprinklers
2 inch pipe	10 sprinklers
2-1/2 inch pipe	20 sprinklers
3 inch pipe	40 sprinklers
3-1/2 inch pipe	65 sprinklers
4 inch pipe	100 sprinklers
5 inch pipe	160 sprinklers
6 inch pipe	275 sprinklers
8 inch pipe	The maximum floor area protected by sprinklers that are supplied by one system or riser. (52,000 sq ft)

**EXTRA HAZARD PIPE SCHEDULE**

**Steel Pipe**

1 inch pipe	1 sprinkler
1-1/4 inch pipe	2 sprinklers
1-1/2 inch pipe	5 sprinklers
2 inch pipe	8 sprinklers
2-1/2 inch pipe	15 sprinklers
3 inch pipe	27 sprinklers
3-1/2 inch pipe	40 sprinklers
4 inch pipe	55 sprinklers
5 inch pipe	90 sprinklers
6 inch pipe	150 sprinklers
8 inch pipe	The maximum floor area protected by sprinklers that are supplied by one system or riser. (25,000 sq ft)

**1-7 Classification of Occupancies.**

1-7.1\* Occupancy classifications for this standard relate to sprinkler installations and their water supplies only. They are not intended to be a general classification of occupancy hazards.

**1-7.2 Light Hazard Occupancies.**

1-7.2.1\* Light Hazard. Occupancies or portions of other occupancies where the quantity and/or combustibility of contents is low and fires with relatively low rates of heat release are expected.

**1-7.3 Ordinary Hazard Occupancies.**

1-7.3.1\* Ordinary Hazard (Group 1). Occupancies or portions of other occupancies where combustibility is low, quantity of combustibles is moderate, stockpiles of combustibles do not exceed 8 ft (2.4 m), and fires with moderate rates of heat release are expected.

1-7.3.2\* Ordinary Hazard (Group 2). Occupancies or portions of other occupancies where quantity and combustibility of contents is moderate, stockpiles do not exceed 12 ft (3.7 m), and fires with moderate rate of heat release are expected.

1-7.3.3\* Ordinary Hazard (Group 3). Occupancies or portions of other occupancies where quantity and/or combustibility of contents is high, and fires of high rate of heat release are expected.

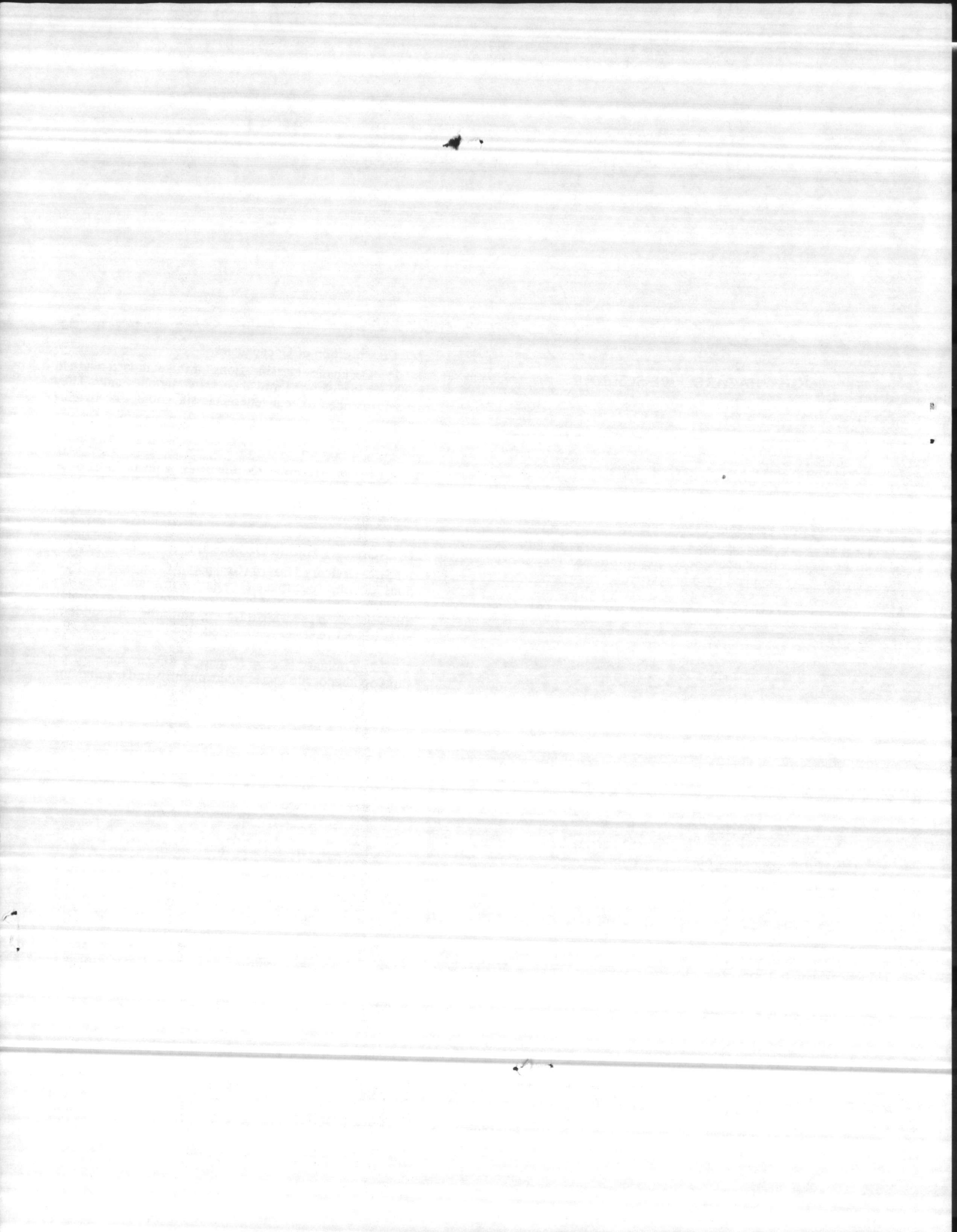
**1-7.4\* Extra Hazard Occupancies.**

1-7.4.1\* Extra Hazard Occupancies or portions of other occupancies where quantity and combustibility of contents is very high, and flammable and combustible liquids, dust, lint, or other materials are present introducing the probability of rapidly developing fires with high rates of heat release.

1-7.4.2 Extra Hazard Occupancies involve a wide range of variables that may produce severe fires. The following shall be used to evaluate the severity of Extra Hazard Occupancies:

Extra Hazard (Group 1) includes occupancies described in 1-7.4.1 with little or no flammable or combustible liquids.

Extra Hazard (Group 2) includes occupancies described in 1-7.4.1 with moderate to substantial amounts of flammable or combustible liquids or where shielding of combustible is extensive.



## LIGHT HAZARD PIPE SCHEDULE

### Steel Pipe

1	inch pipe	2 sprinklers
1-1/4	inch pipe	3 sprinklers
1-1/2	inch pipe	5 sprinklers
2	inch pipe	10 sprinklers
2-1/2	inch pipe	30 sprinklers
3	inch pipe	60 sprinklers
3-1/2	inch pipe	100 sprinklers
4	inch pipe	The maximum floor area protected by sprinklers that are supplied by one system or one riser. (52,000 sq. ft.)

## ORDINARY HAZARD PIPE SCHEDULE

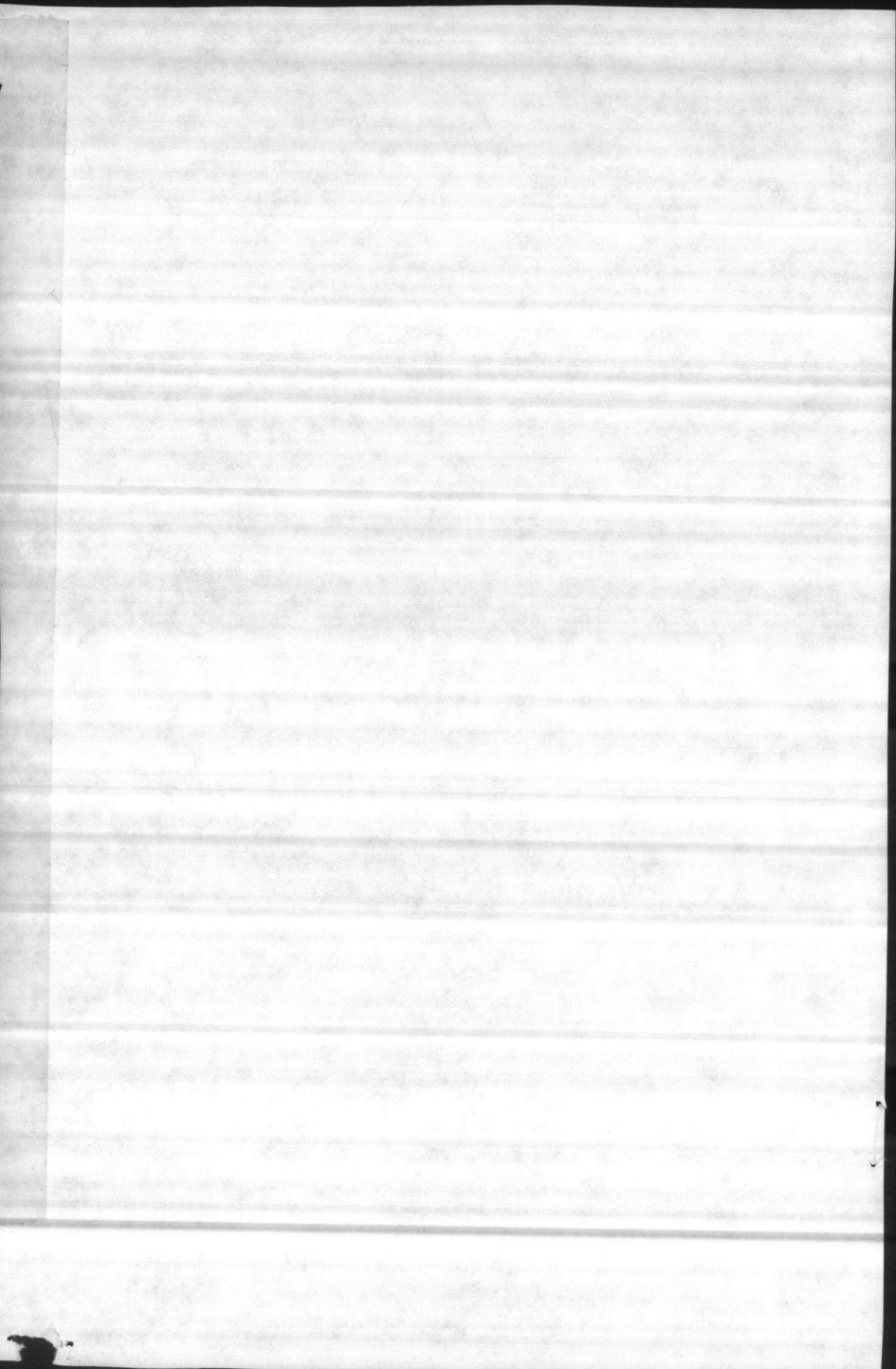
### Steel Pipe

1	inch pipe	2 sprinklers
1-1/4	inch pipe	3 sprinklers
1-1/2	inch pipe	5 sprinklers
2	inch pipe	10 sprinklers
2-1/2	inch pipe	20 sprinklers
3	inch pipe	40 sprinklers
3-1/2	inch pipe	65 sprinklers
4	inch pipe	100 sprinklers
5	inch pipe	160 sprinklers
6	inch pipe	275 sprinklers
8	inch pipe	The maximum floor area protected by sprinklers that are supplied by one system or riser. (52,000 sq. ft.)

## EXTRA HAZARD PIPE SCHEDULE

### Steel Pipe

1	inch pipe	1 sprinkler
1-1/4	inch pipe	2 sprinklers
1-1/2	inch pipe	5 sprinklers
2	inch pipe	8 sprinklers
2-1/2	inch pipe	15 sprinklers
3	inch pipe	27 sprinklers
3-1/2	inch pipe	40 sprinklers
4	inch pipe	55 sprinklers
5	inch pipe	90 sprinklers
6	inch pipe	150 sprinklers
8	inch pipe	The maximum floor area protected by sprinklers that are supplied by one system or riser. (25,000 sq. ft.)



## 1-7 Classification of Occupancies.

1-7.1\* Occupancy classifications for this standard relate to sprinkler installations and their water supplies only. They are not intended to be a general classification of occupancy hazards.

### 1-7.2 Light Hazard Occupancies.

1-7.2.1\* **Light Hazard.** Occupancies or portions of other occupancies where the quantity and/or combustibility of contents is low and fires with relatively low rates of heat release are expected.

### 1-7.3 Ordinary Hazard Occupancies.

1-7.3.1\* **Ordinary Hazard (Group 1).** Occupancies or portions of other occupancies where combustibility is low, quantity of combustibles is moderate, stockpiles of combustibles do not exceed 8 ft (2.4 m), and fires with moderate rates of heat release are expected.

1-7.3.2\* **Ordinary Hazard (Group 2).** Occupancies or portions of other occupancies where quantity and combustibility of contents is moderate, stockpiles do not exceed 12 ft (3.7 m), and fires with moderate rate of heat release are expected.

1-7.3.3\* **Ordinary Hazard (Group 3).** Occupancies or portions of other occupancies where quantity and/or combustibility of contents is high, and fires of high rate of heat release are expected.

### 1-7.4\* Extra Hazard Occupancies.

1-7.4.1\* Extra Hazard Occupancies or portions of other occupancies where quantity and combustibility of contents is very high, and flammable and combustible liquids, dust, lint, or other materials are present introducing the probability of rapidly developing fires with high rates of heat release.

1-7.4.2 Extra Hazard Occupancies involve a wide range of variables that may produce severe fires. The following shall be used to evaluate the severity of Extra Hazard Occupancies:

Extra Hazard (Group 1) includes occupancies described in 1-7.4.1 with little or no flammable or combustible liquids.

Extra Hazard (Group 2) includes occupancies described in 1-7.4.1 with moderate to substantial amounts of flammable or combustible liquids or where shielding of combustibles is extensive.

