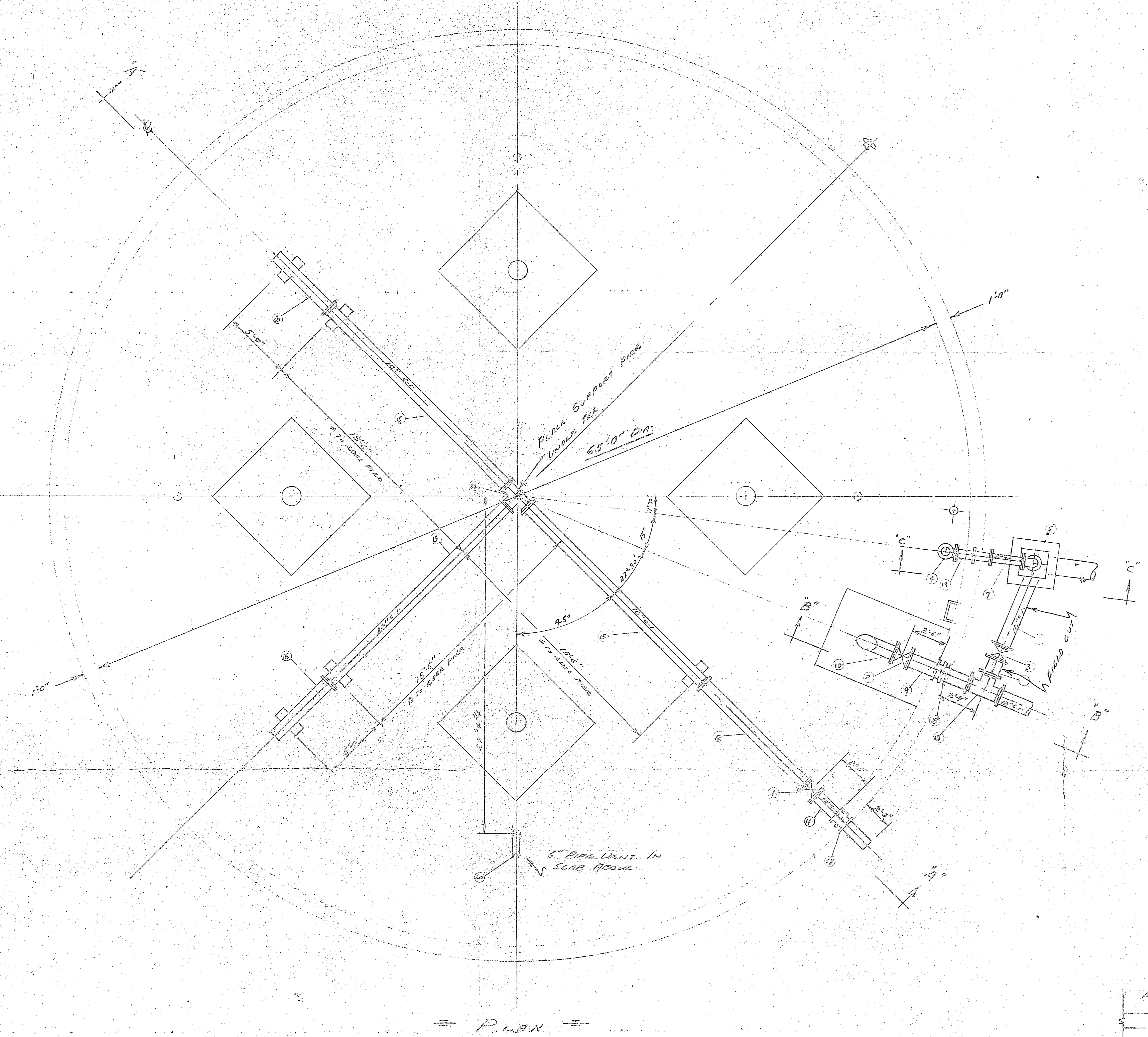
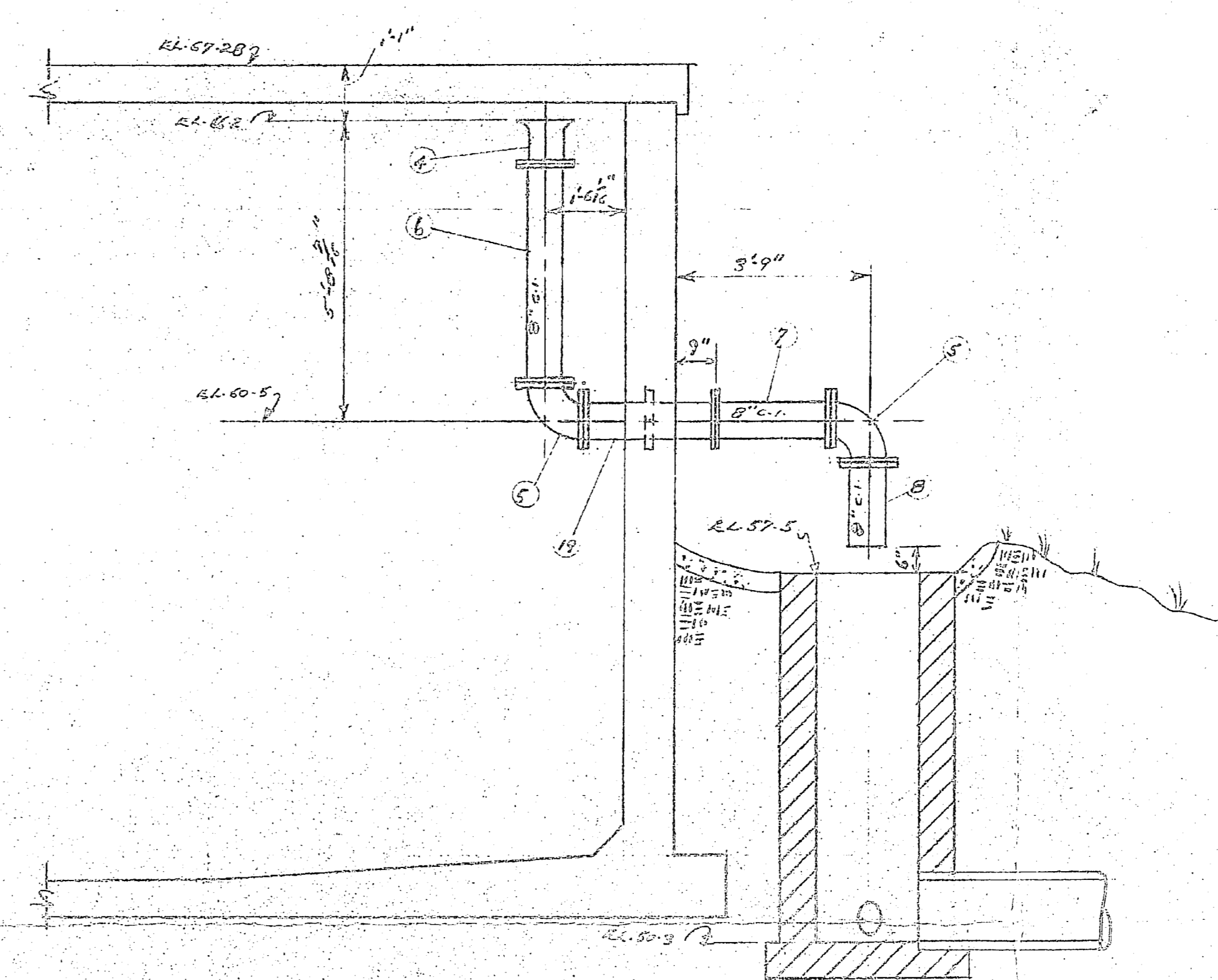


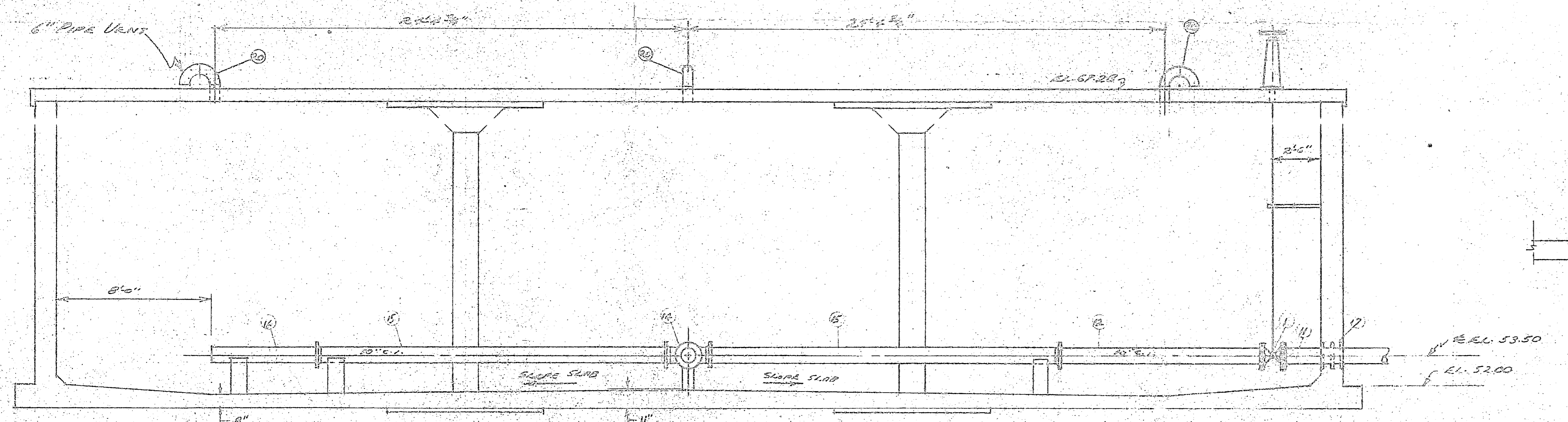
Item	Description	Dim.	Qty.
17	10" Ribs: One Under Main Pass & One Under	13" Dia.	1
18	12" Ribs	16" Dia.	1
19	12" Ribs	9" Dia.	1
20	8" Dia. C.I. Flange & Frame Casting	16" Dia.	1
21	8" Dia. C.I. Flange	8" Dia.	2
22	8" x 2 1/2" R.F.C. Pipe		1
23	8" x 2 1/2" R.F.C. Pipe		1
24	8" x 1 1/2" R.F.C. Pipe		1
25	12" x 2 1/2" R.F.C. Pipe		1
26	12" x 5 1/4" R.F.C. Pipe, End Cut on 30" Shell		1
27	10" x 5 1/4" R.F.C. Pipe		1
28	10" x 10 1/2" R.F.C. Pipe		1
29	10" x 10 1/2" R.F.C. Pipe		1
30	10" x 10 1/2" C.I. Flange	12" Dia.	1
31	10" x 10 1/2" C.I. Flange	11" Dia.	1
32	10" x 10 1/2" C.I. Flange - By Contra.		3
33	10" x 10 1/2" C.I. Flange - By Contra.		2
34	10" x 10 1/2" C.I. Flange - Fin Cast in Center		1
35	10" x 10 1/2" C.I. Flange - Fin Cast in Center		1
36	8" x 2 1/2" R.F.C. Pipe, End Cut on Center		1
37	6" Pipe Vent		2



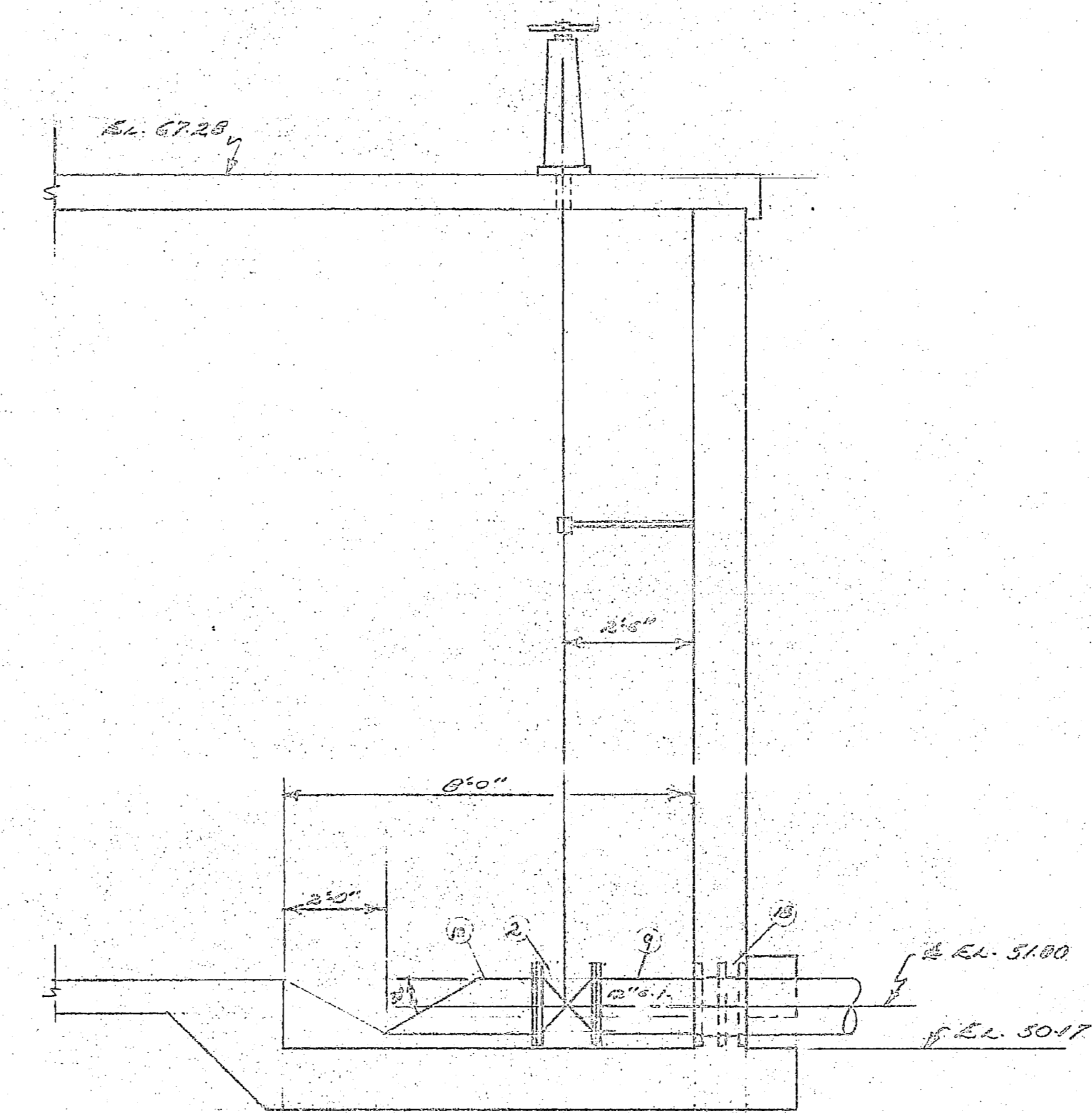
PLAN



SECTION C-C  
3/8" x 1'-0"



SECTION A-A  
1/2" x 1'-0"



SECTION B-B  
3/8" x 1'-0"

PIPING DETAILS  
FOR  
RESERVOIR  
WATER TREATMENT PLANT  
CAMP LEITCHFIELD, N.C.  
BROWN CONSTRUCTION CO., CONTRA.  
GRINNELL COMPANY, INC.  
CHARLOTTE, N.C.  
Scale: 3/8" = 1'-0" 8-10-64 DMM

