

REVISIONS		
SYM	DESCRIPTION	DATE
A	REVISED HANGAR CONTROLS	7/25/67

UNIT HEATER (UH) SCHEDULE

UNIT DESIGNATION	STEAM PRESS.	MIN. CAP. MBH	ENT. AIR TEMP °F	MOUNTING HEIGHT	MIN. THROW	TYPE OF DISCHARGE	LOCATION
UH-1 & 2	100	900	60°	28'	49'	VERT.	HANGAR
UH-3	100	51	60°	9'	19'	HORIZ.	TIRE SHOP
UH-4	100	12.3	60°	9'	24'	HORIZ.	SMALL PARTS FINISHING
UH-5	100	51	60°	9'	19'	HORIZ.	TOOL RM.
UH-6	100	22.0	60°	9'	28'	HORIZ.	WELDING SHOP
UH-7	100	32.0	60°	9'	27'	HORIZ.	MACHINE SHOP
UH-8	100	23.8	60°	9'	30'	HORIZ.	INSPECTION
UH-9 & 10	100	15.9	60°	9'	25'	HORIZ.	CLEANING
UH-11 & 12	100	62.0	60°	9'	37'	HORIZ.	COMPONENT & AUX. STORES
UH-13	100	103	60°	9'	18'	HORIZ.	BATTERY (EAD-AC)
UH-14	100	167.1	60°	9'	18'	HORIZ.	BATTERY (EAD-AC)
UH-15 & 16	100	60.0	60°	14'	45'	VERT.	GEN. SHOP
UH-18	15	10.1	60°	9'	36'	HORIZ.	SUPPORT EQUIPMENT
UH-19	15	10.1	60°	9'	36'	HORIZ.	SUPPORT EQUIPMENT

* THROW ON VERTICAL DISCHARGE HEATERS IS RADIUS OF AREA COVERED.

EXHAUST FAN (EF) SCHED

UNIT DESIGNATION	CFM	S.P.	MOTOR ELEC. CAP. HP	CONTROL	TYPE
EF-1	1400	1/4"	120/1/60	1/4" W/H V-1	WALL
EF-2	3000	1/8"	440/3/60	1/2" W/H V-1	WALL
EF-3	2000	1/4"	120/1/60	1/4" W/H V-1	WALL
EF-4	1200	1/8"	120/1/60	1/4" W/H V-1	WALL
EF-5	650	1/8"	120/1/60	1/2" MANUAL	WALL
EF-6	2240	1/4"	120/1/60	1/4" MANUAL	WALL
EF-7	2240	1/4"	120/1/60	1/4" MANUAL	WALL
EF-8	5000	1/4"	460/3/60	1" W/H V-1	ROOF
EF-9	2000	1/4"	120/1/60	1/4" W/TOILET LIGHTER	ROOF
EF-10	6800	3/4"	460/3/60	1/2" W/H V-1	WALL
EF-11	970	1/4"	120/1/60	1/4" W/AC-1	ROOF

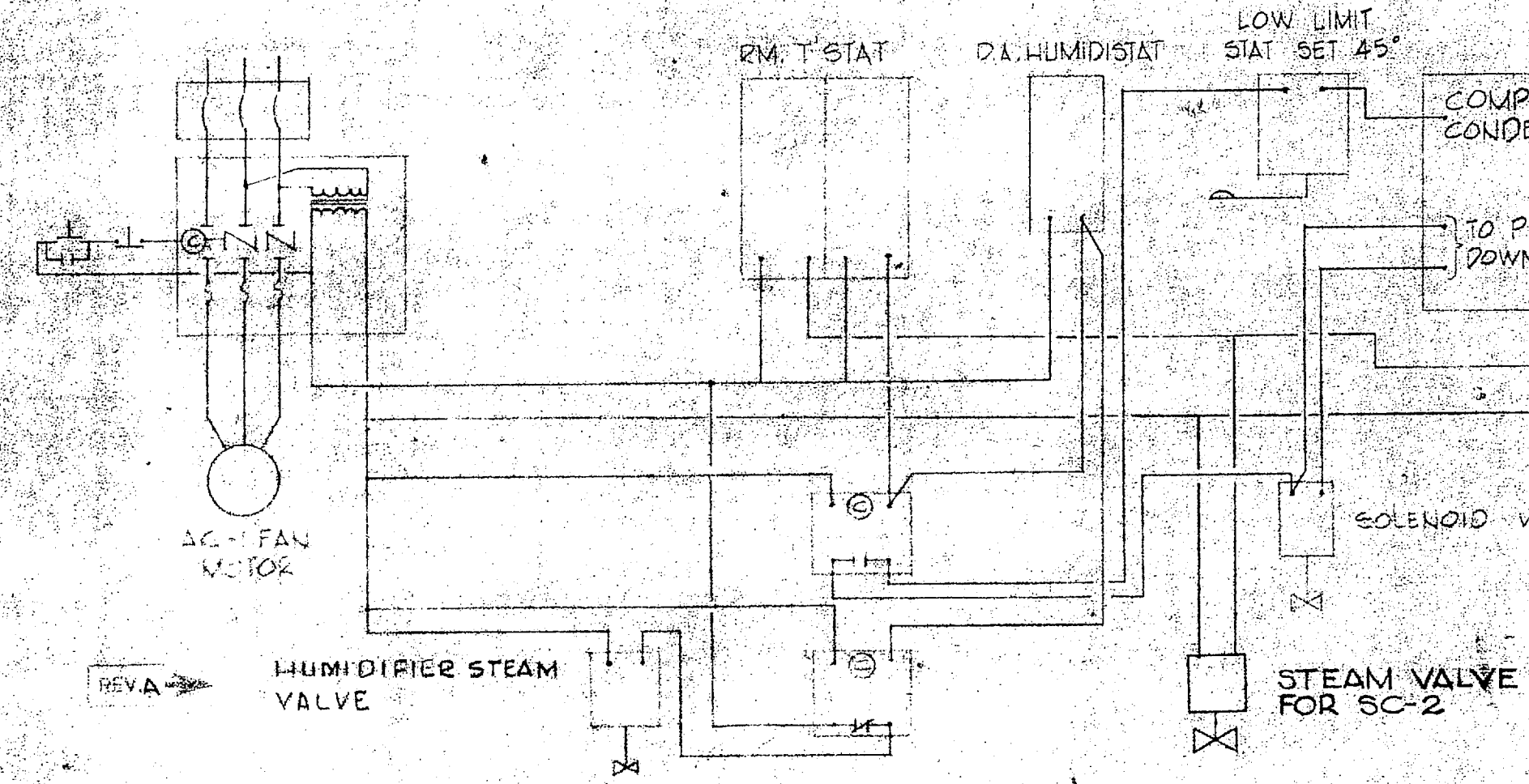
STEAM CONNECTOR (CV) SCHED

UNIT DESIGNATION	STEAM PRESS.	VAL. CAPACITY	ENT. AIR TEMP.	LOCATION
CV-1 & 2	15	4.2 MBH	70°	OFF. TOILET
CV-3	15	2.0 MBH	70°	E.M. TOILET

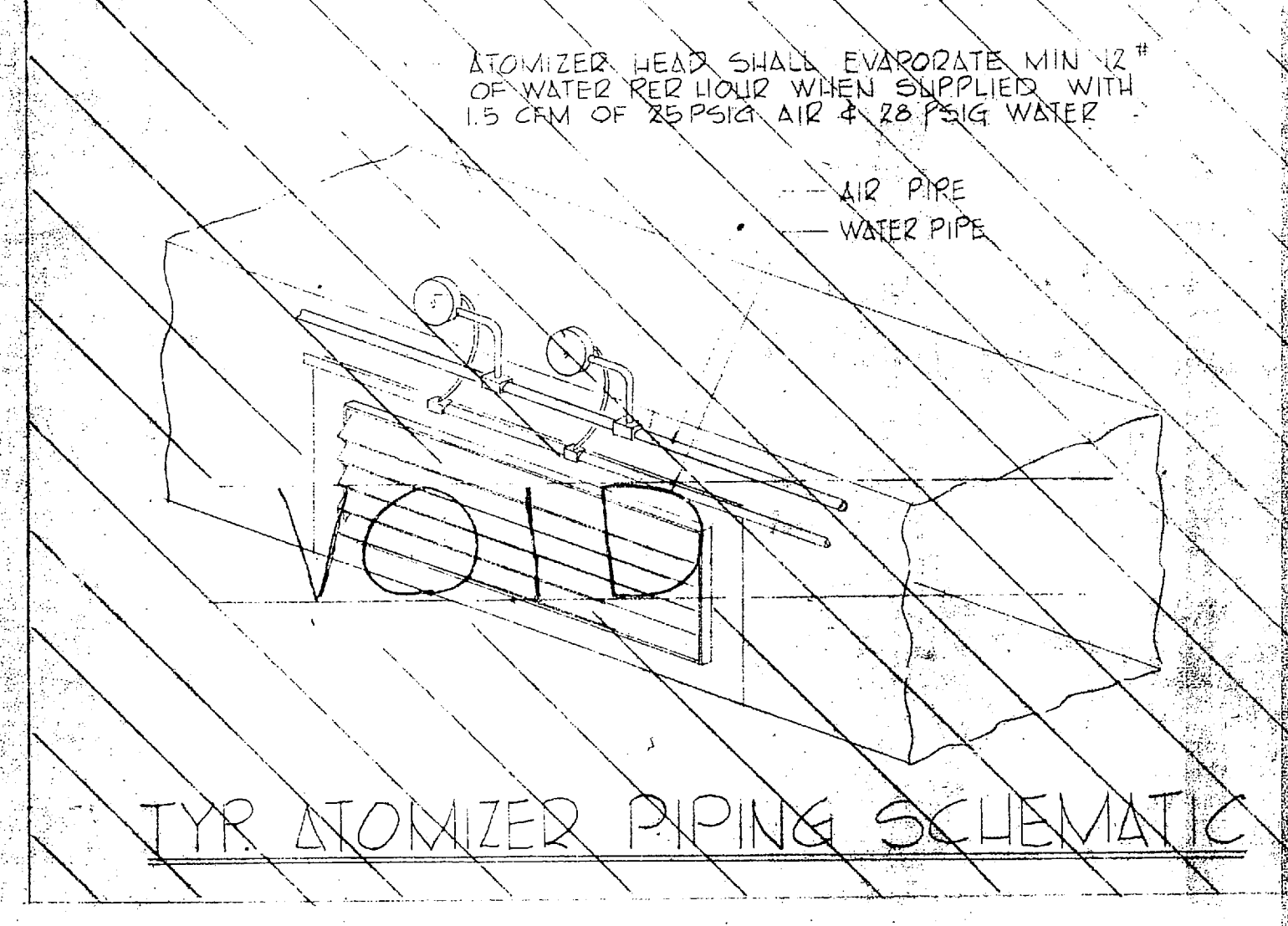
HEATING & VENTILATING UNIT (H&V) SCHEDULE

UNIT DESIGNATION	CFM	E.S.P. "WG	COILS	ENT. AIR TEMP.	MOTOR HP	ELECT. CAP.	CONTROL	REMARKS
H&V-1	22,000	3/4"	100 PSIG	850	25°	10	460/3/60	DISCHARGE STAT. ROOM HOZZ. DOWN + 4' LI T'STAT
H&V-2	24,000	1"	5 PSIG	1140	75°	2	460/3/60	

NOTE: BOTH H&V UNITS FURNISHED W/ V-BANK FILTER BOXES, FACE & BY-PASS DAMPERS

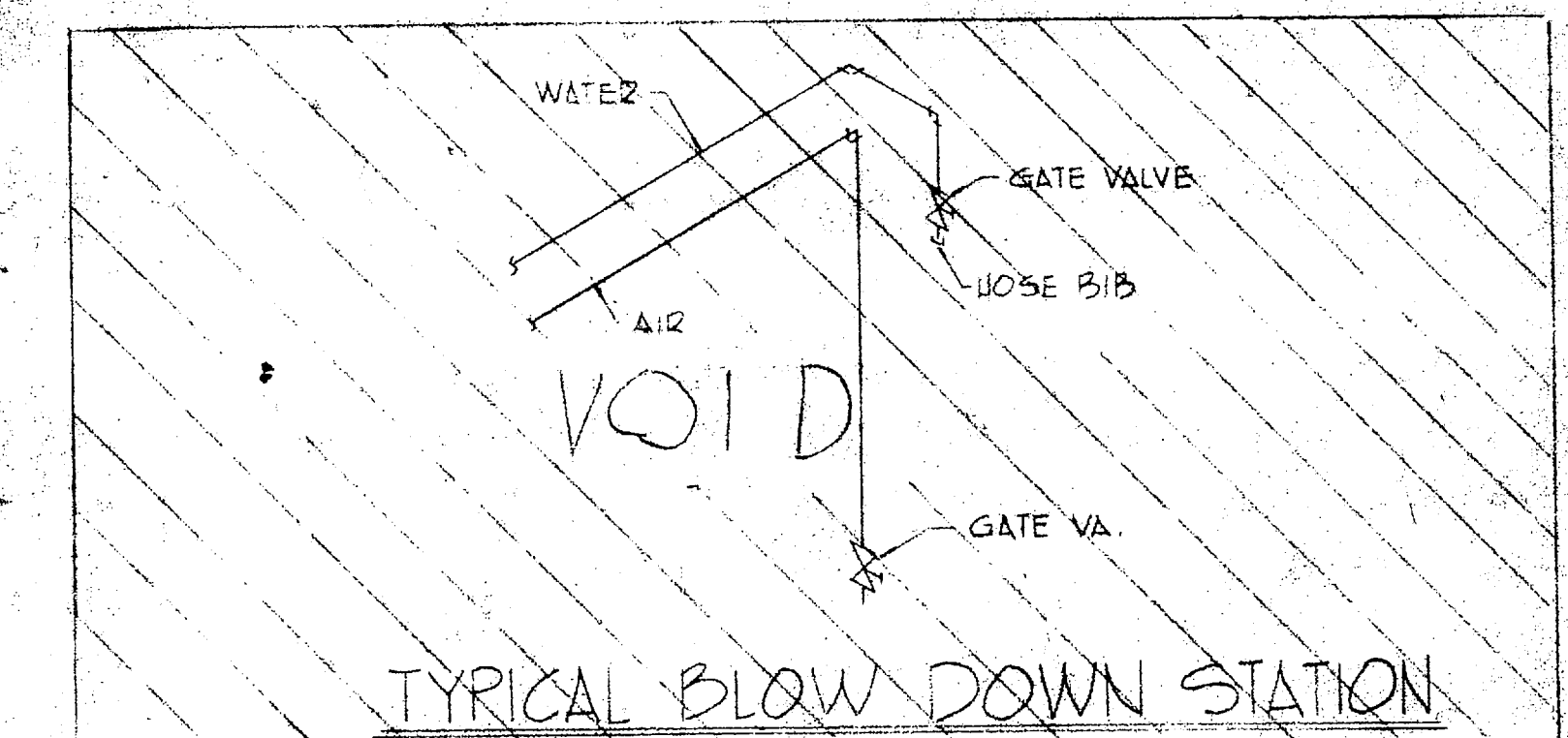


AC-1 CONTROL DIAGRAM

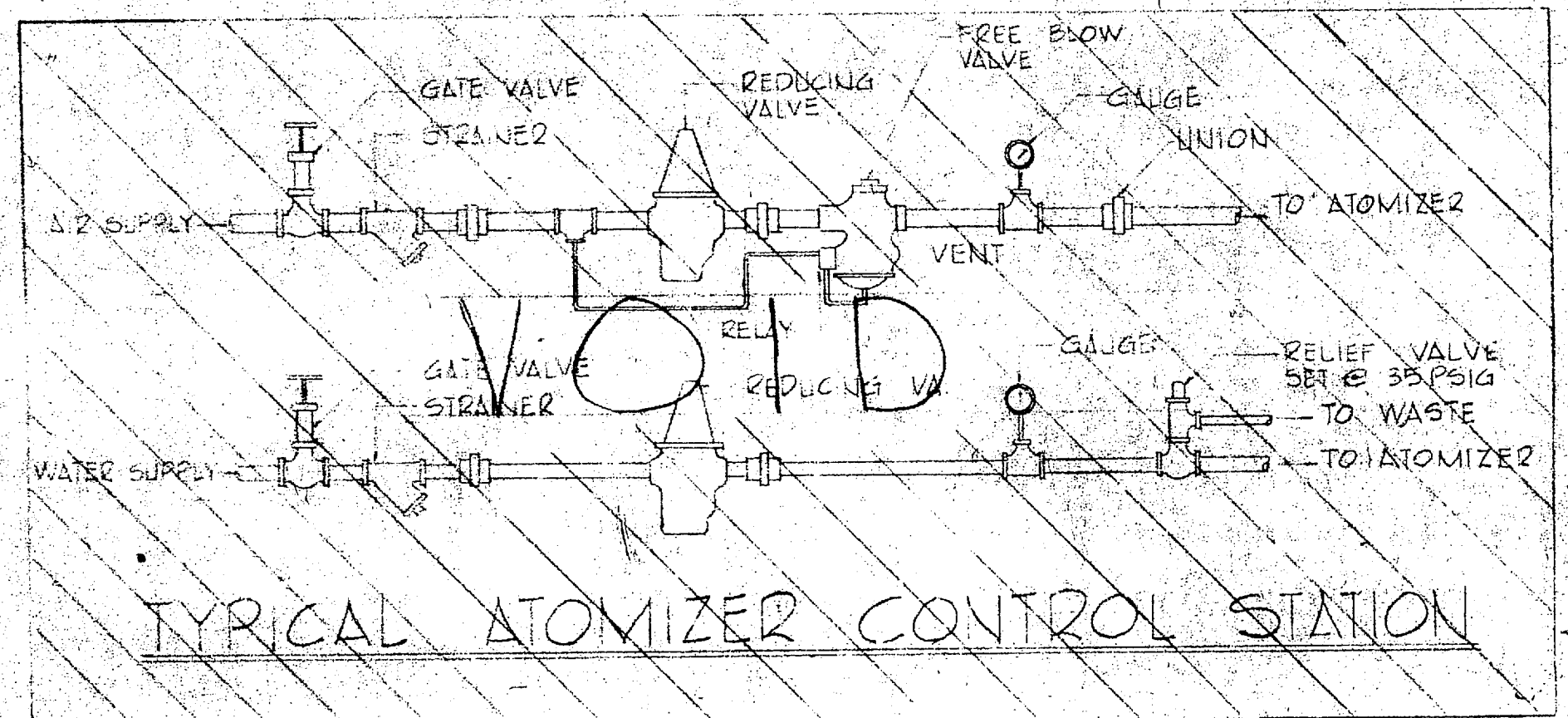


TYPICAL ATOMIZER PIPING SCHEMATIC

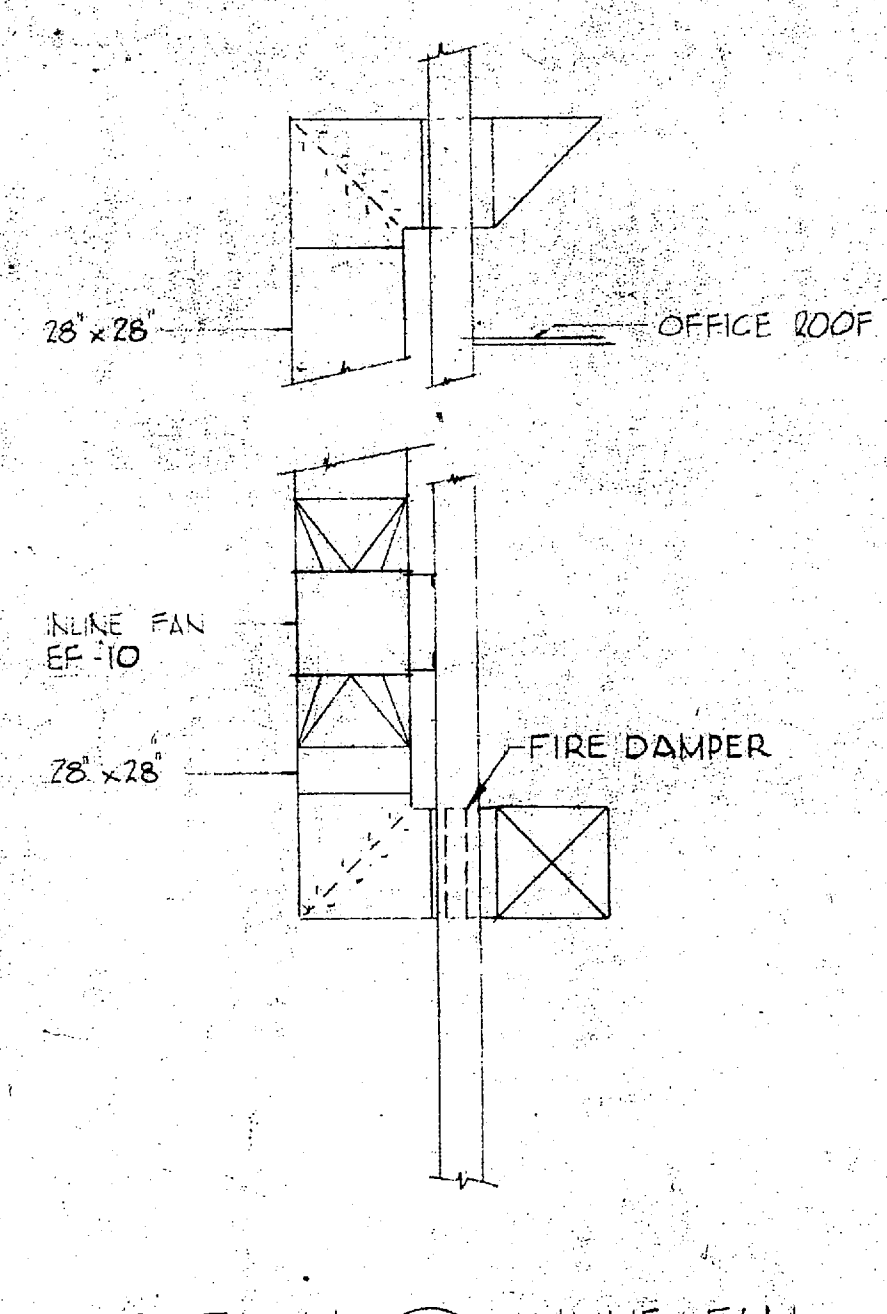
AC-2 CONTROL DIAGRAM



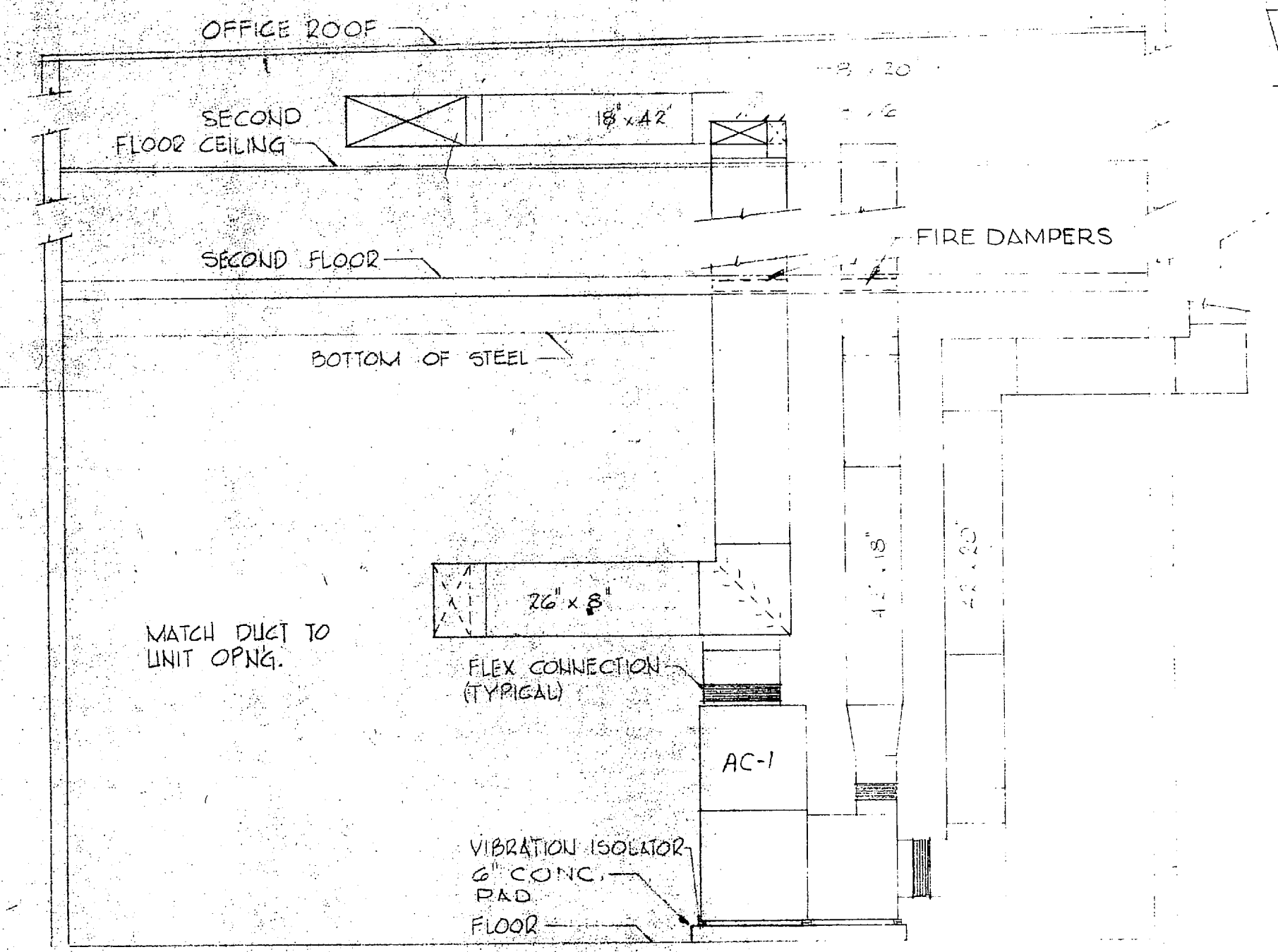
TYPICAL BLOW DOWN STATION



TYPICAL ATOMIZER CONTROL STATION



SECTION 4 INLINE FAN SCALE: 1/4" = 1'-0"



SECTION 3 THRU MECHANICAL ROOM SCALE: 1/4" = 1'-0"

STEAM COIL (SC) SCHEDULE

UNIT DESIGNATION	STEAM PRESS.	LOAD MBH	ENT. AIR TEMP.	DUCT SIZE	CONTR.
SC-1	5	160	50°	4160	ELEC. RM. T'STAT
SC-2	5	247	50°	6200	ELEC. RM. T'STAT
SC-3	5	45	50°	570	ELEC. RM. T'STAT
SC-4	5	57.7	50°	1200	ELEC. RM. T'STAT
SC-5	5	202.2	50°	7120	ELEC. RM. T'STAT

* MAKE NECESSARY DUCT TRANSITIONS TO ACCEPT COIL.

AIR CONDITIONING (AC) SCHEDULE

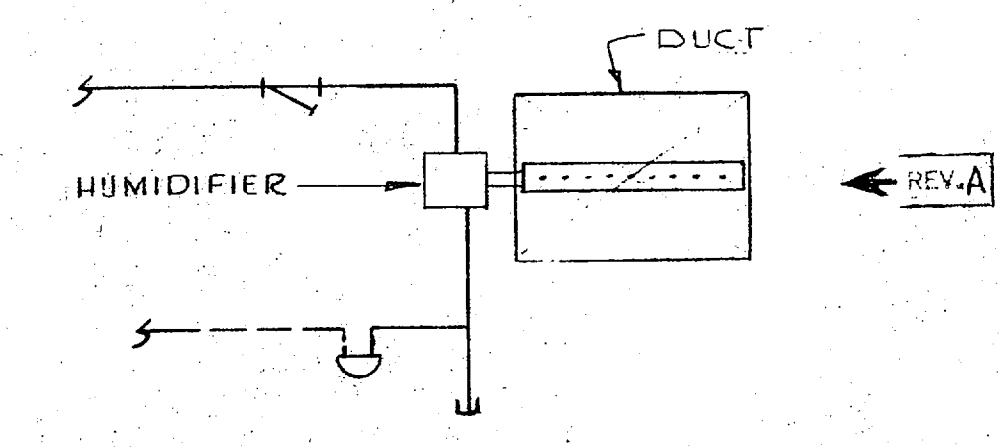
UNIT DESIGNATION	TOTAL CFM	IN. O.A. CFM	E.S.P. IN. WG	MOTOR HP	COOLING COIL	HEATING COIL	MOUNTING	REMARKS
AC-1	8320	70	3	460/3/60	78" x 25" x 50" DB	24" x 18" x 18" DB	FLOOR	
AC-2	11630	1000	2"	7 1/2	460/3/60	78" x 25" x 50" DB	FLOOR	

* AIR CONDITIONING UNITS DESIGNED TO PRODUCE RATED CAPACITY WHEN WORKING IN CONJUNCTION WITH THE AIR COOLED CONDENSER SERVING IT.

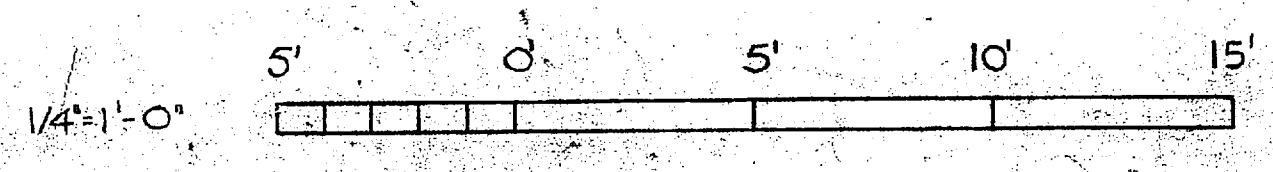
AIR COOLED CONDENSING UNIT (C) SCHEDULE

UNIT DESIGNATION	HEAT * UNIT PRODUCTION	ENT. AIR TEMP °F	CONDENSING TEMP °F	FAN HP	ELECT. CHARGE	TOTAL INPUT	LOCATION	REMARKS
C-1	250 MBH	AC-1	90°	115 MAX	2	460/3/60	213 KW	ON GRADE
C-2	284 MBH	AC-2	90°	115 MAX	2	460/3/60	22.9 KW	ON GRADE

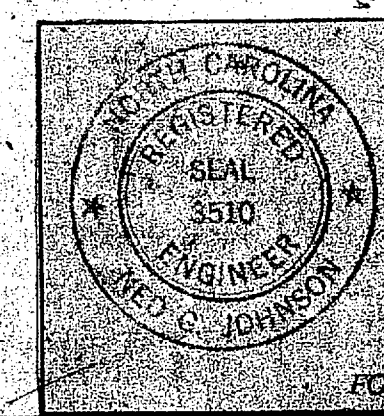
* AIR COOLED CONDENSING UNIT DESIGNED TO PRODUCE RATED CAPACITY WHEN WORKING IN CONJUNCTION WITH AC UNIT IT SERVES.



DUCT HUMIDIFIER DETAIL NO SCALE



RECORD DRAWING DATE FEB 5 1977



LOCKWOOD GREENE ENG., INC. SPARTANBURG, S.C. 29301 ARCHITECTS & ENGINEERS

DEPARTMENT OF THE NAVY NAVAL FACILITIES ENGINEER ATLANTIC DIVISION

DESIGNER: DR. M. D. C. CHEN, CHEN, JOHNSON & ASSOCIATES

PROJECT: HELICOPTER GROUP TRAINING FAC MCAF - NEW RIVER, JACKSONVILLE, N.C.

DATE: 6/12/66

INTERMEDIATE MAINTENANCE HANGAR SCHEDULES & DETAILS

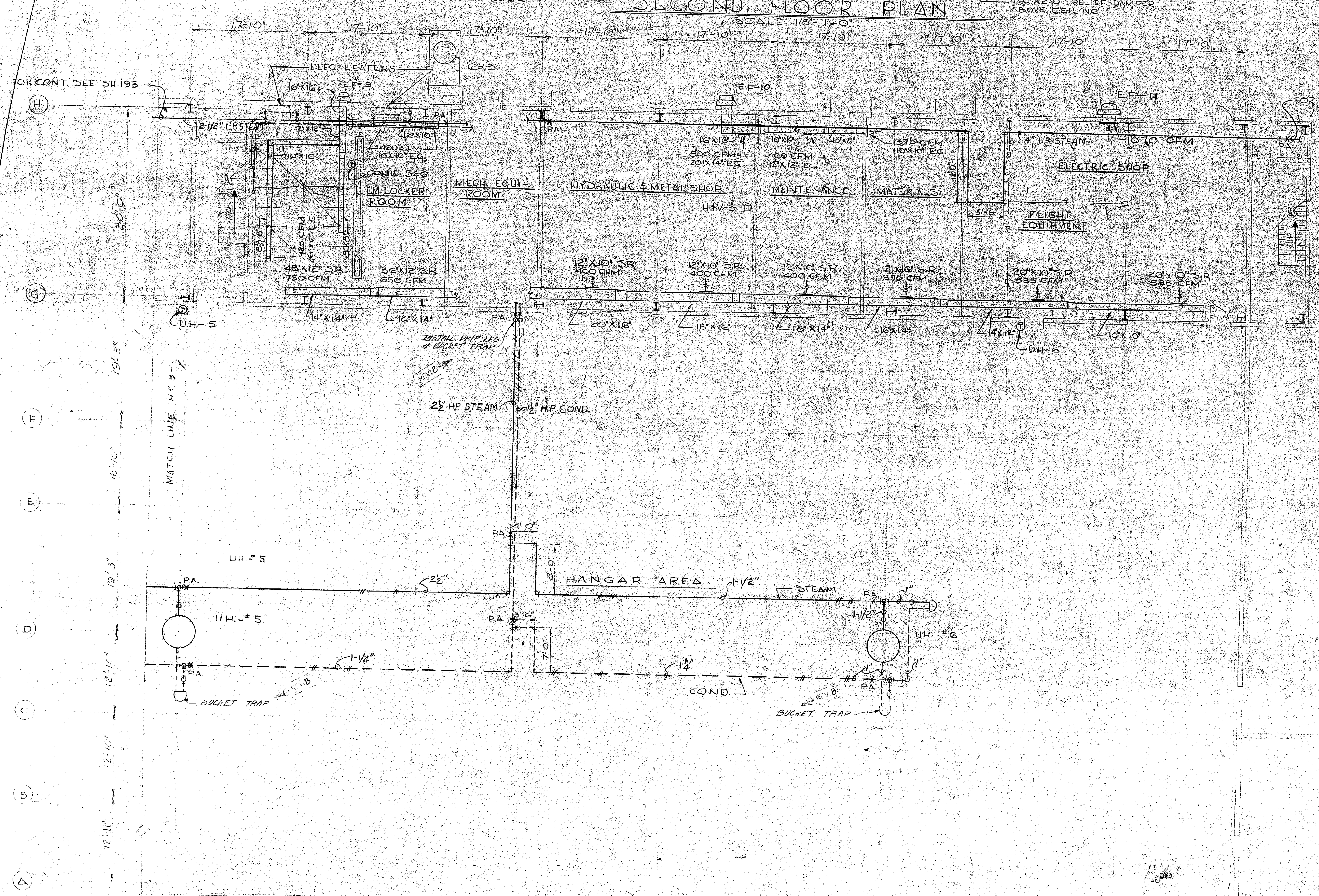
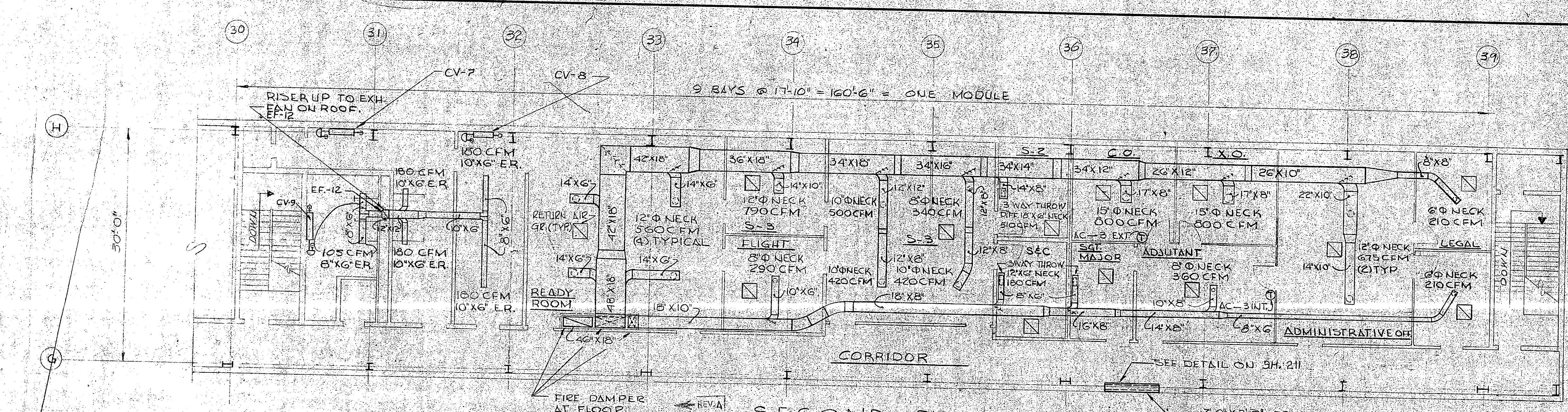
NO. 80091

DATE: 1/11/67

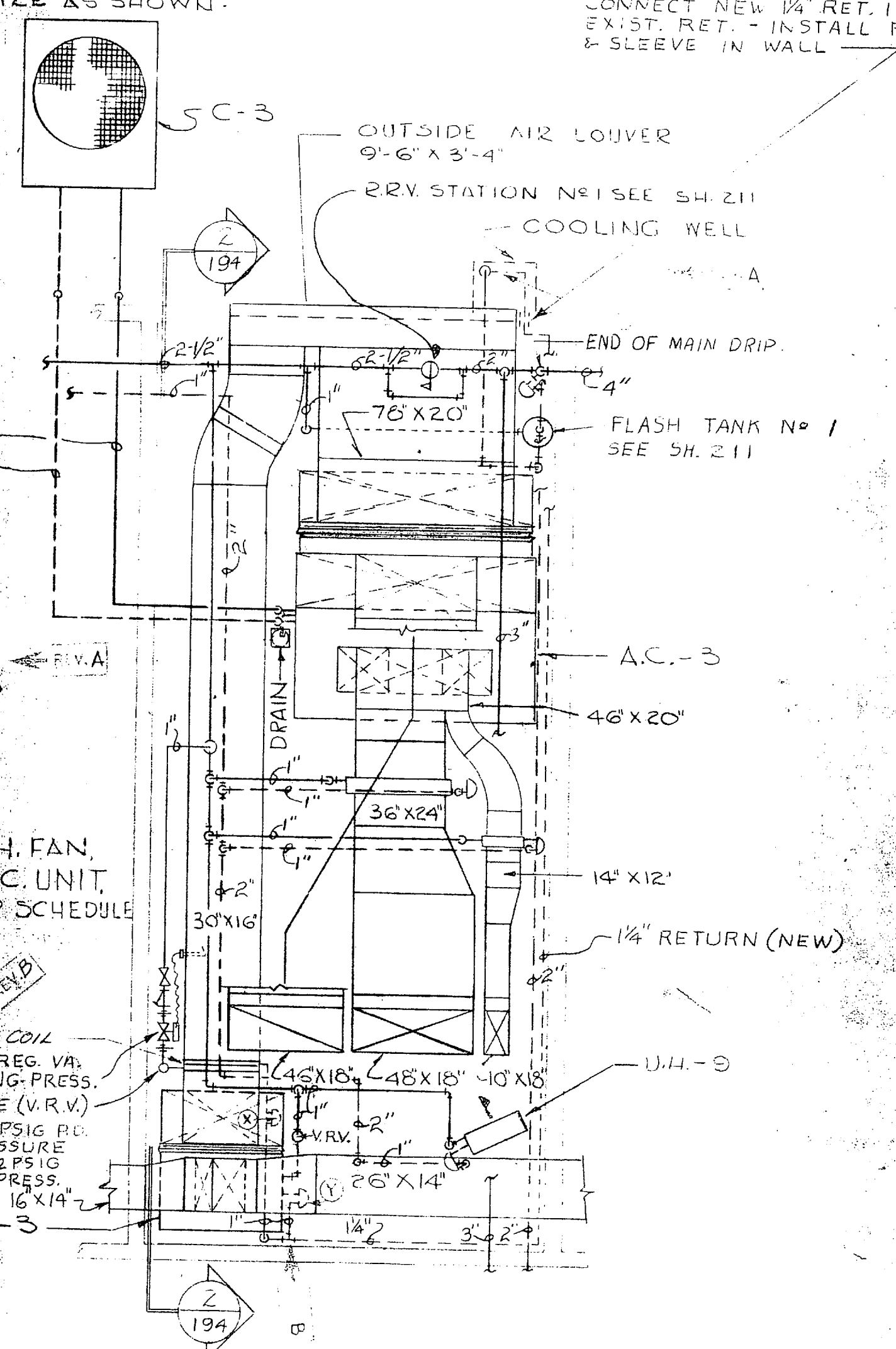
SCALE: 8/17/67

SHEET: 199

REVISIONS			
SYM	DESCRIPTION	DATE	APPROVED
A	RELOCATED COOLING WELL, ADD FIRE DAMPER	7-25-67	[Signature]
B	REVISED AS BUILT CONDITIONS	2-10-72	JRM



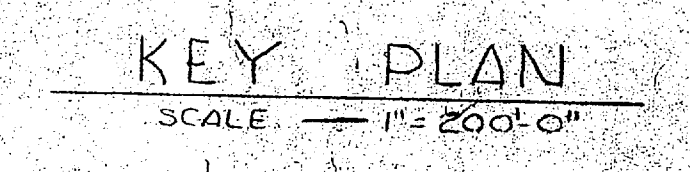
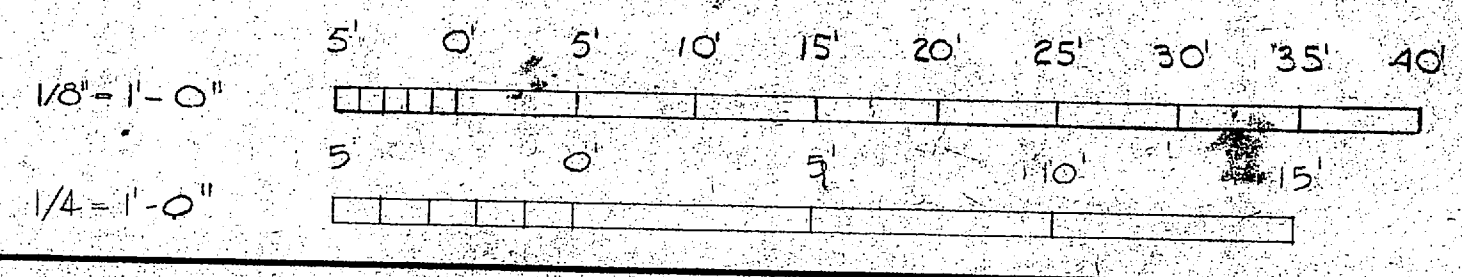
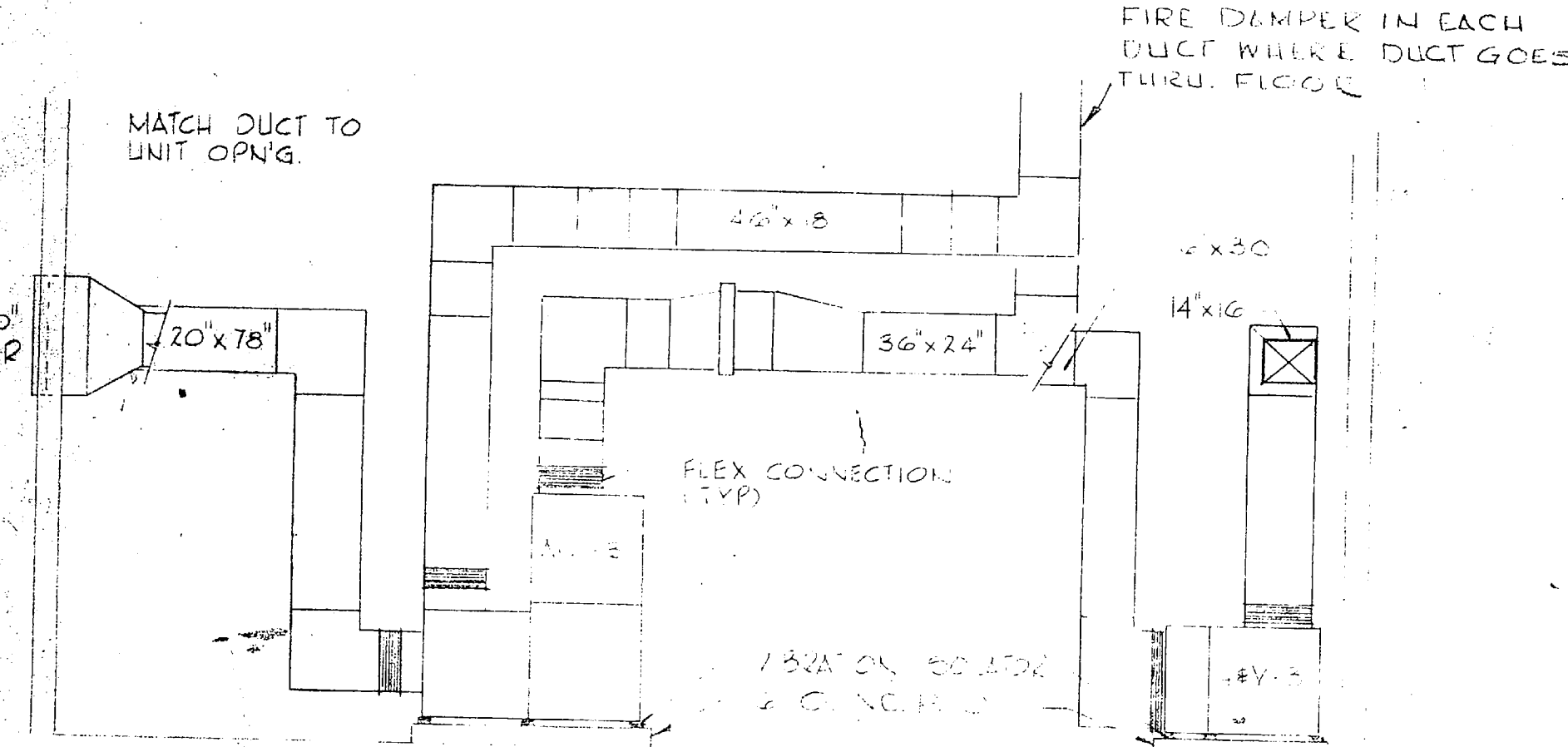
NOTE:
CEILING DIFF. UNLESS OTHERWISE NOTED.
WILL BE ROUND, NECK SIZE AS SHOWN.



NOTE:
ALL EXH. GRILLES COVERING EXH. FAN INTAKES SIZED TO MATCH OPENING.

NOTE:
FOR STEAM CONV. EXH. FAN, CONDENSING UNIT, AC UNIT, HEV UNIT & UNIT HEATER SCHEDULE SEE 'SH. 194

- ① SELF-POWERED TEMP. REG. VAL. 140°/hr. @ 15 PSIG WORKING PRESS.
- ② VACUUM RELIEF VALVE (V.R.V.)
- ③ FLEX TRAP 420°/hr. @ 2 PSIG PL.
- ④ FLEX TRAP 600°/hr. @ 2 PSIG PL.
- ⑤ FLEX TRAP 15° PSIG WORKING PRESS.

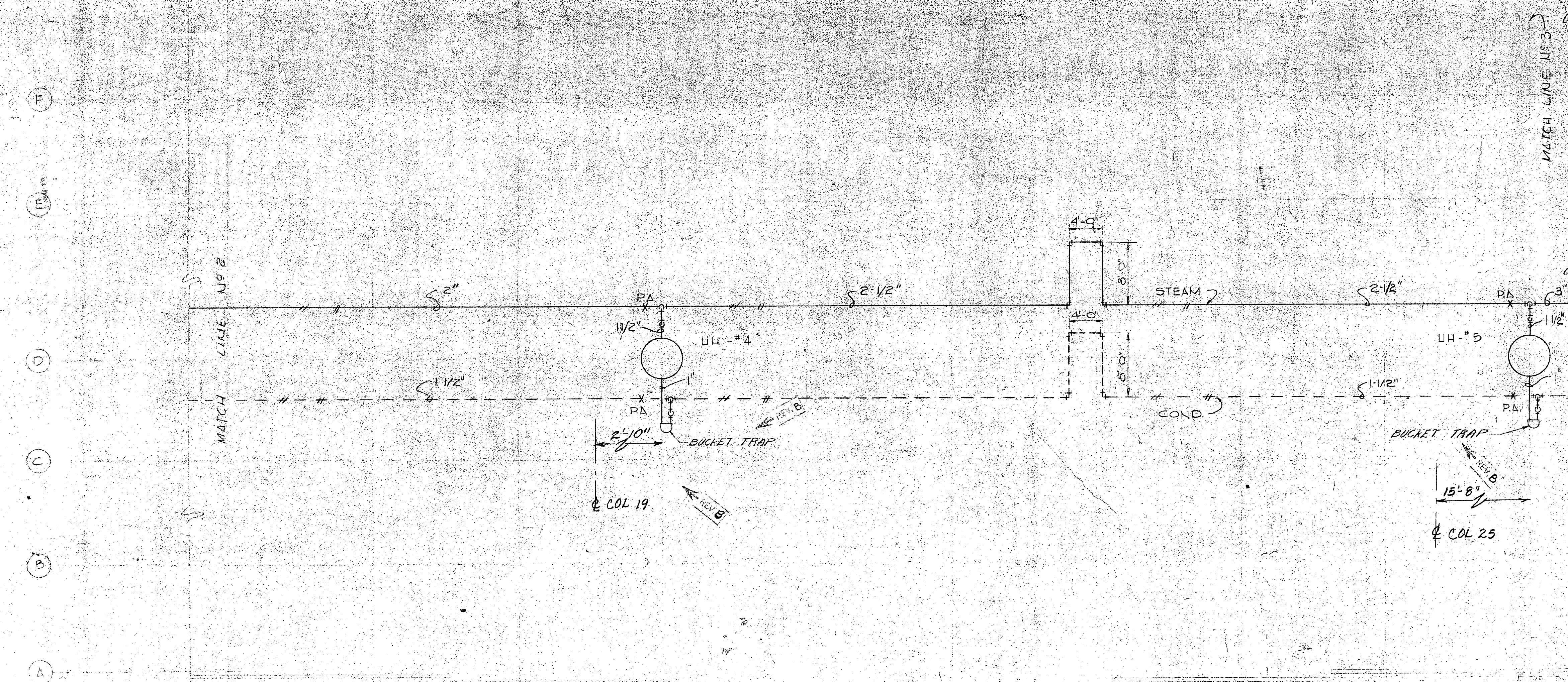
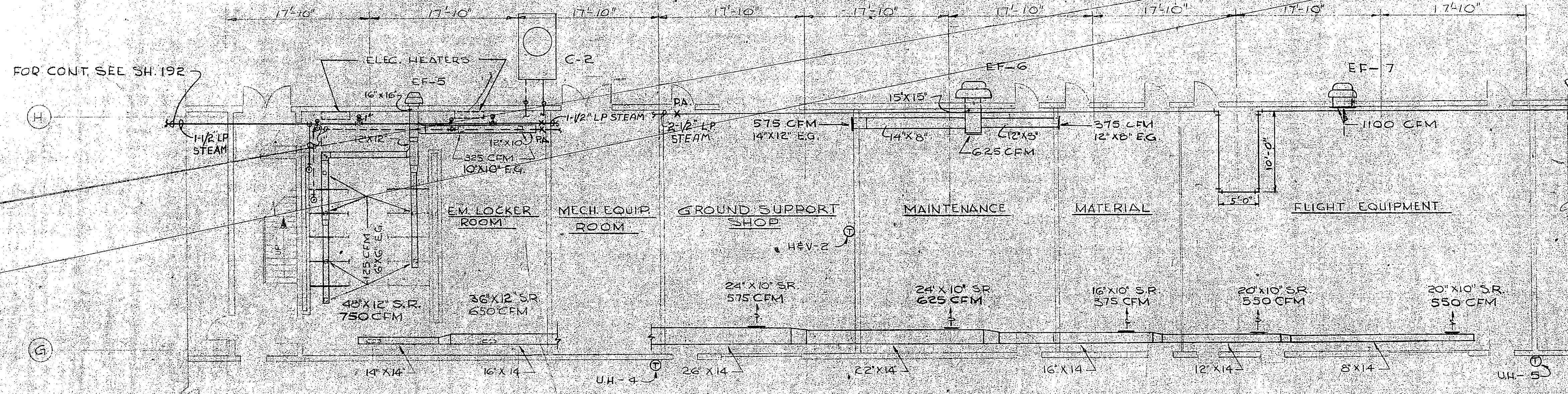
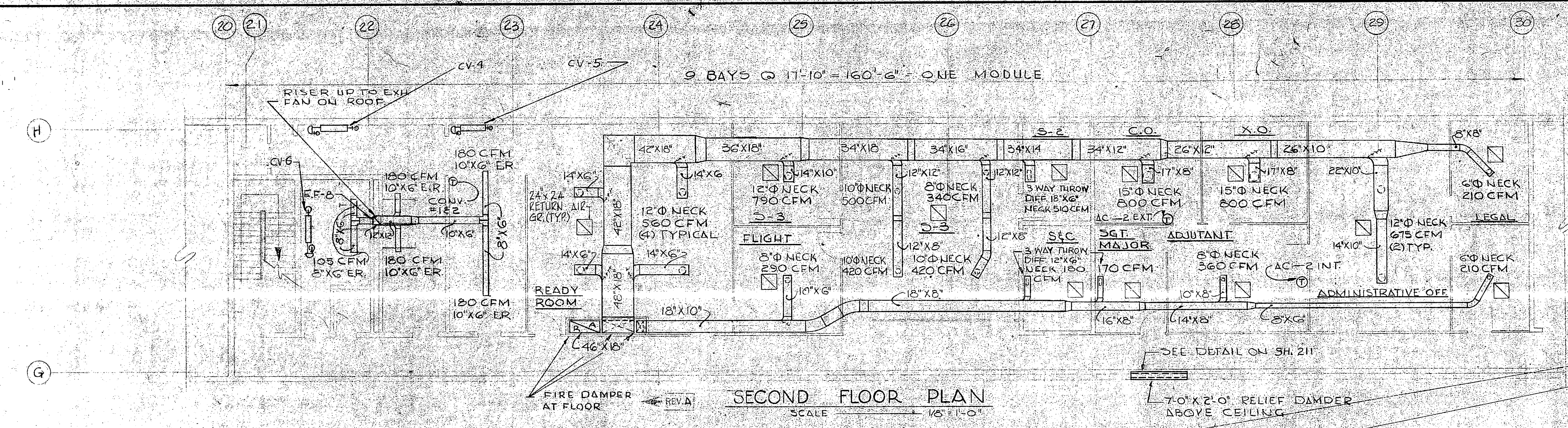


RECORD DRAWING
DATE FEB 3 1972

LOCKWOOD GREENE ENG., INC. SPARTANBURG, S.C. 29301 ARCHITECTS & ENGINEERS	DEPARTMENT OF THE NAVY NAVAL FACILITIES ENGINEERING COMMAND ATLANTIC DIVISION NAVAL STATION HELIOPERATOR GROUP TRAINING FACILITY MCAF - NEW RIVER, JACKSONVILLE, N.C.
DESIGNED BY: [Signature] DRAWN BY: [Signature] CHECKED BY: [Signature] DATE: 6/10/62	ORGANIZATIONAL MAINTENANCE HANGAR AC, HEAT & VENT-PLAN & DETAILS
PROJ. MGR. [Signature] FIRM MEMBER	SIZE: CODE IDENT NO. 80091
APPROVED: [Signature] DATE: 7-25-67	NAVAC DRAWING NO. 1198742
PUBLIC WORKS OFFICER APPROVED: [Signature] DATE: 7-27-67	CONST. CONTR. NO. NB 98879
ED FOR COMMANDER, NAVAC	SCALE AS SHOWN SPEC. 88179/67 SHEET 194 OF 265

A/E COMM. NO. 67046

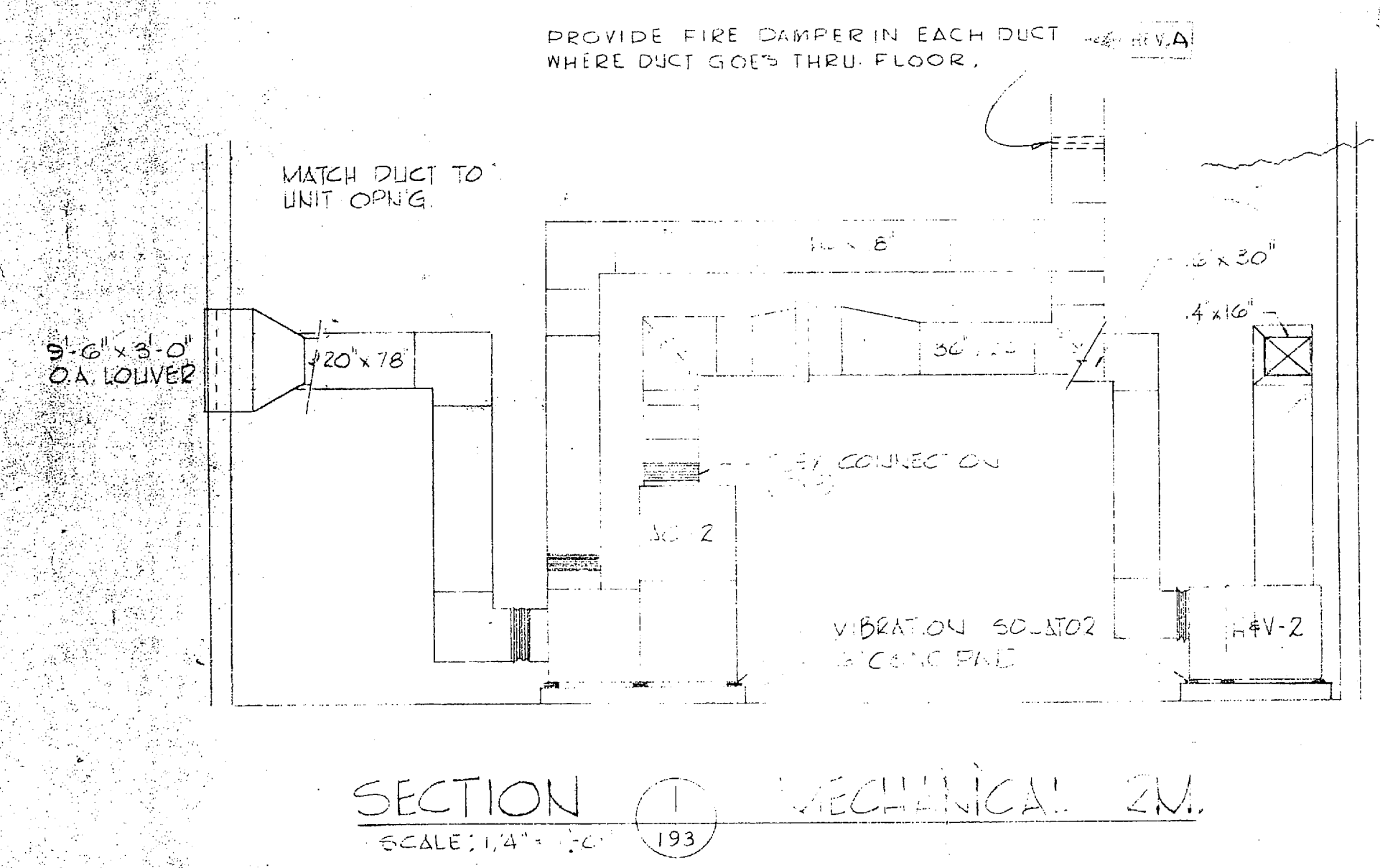
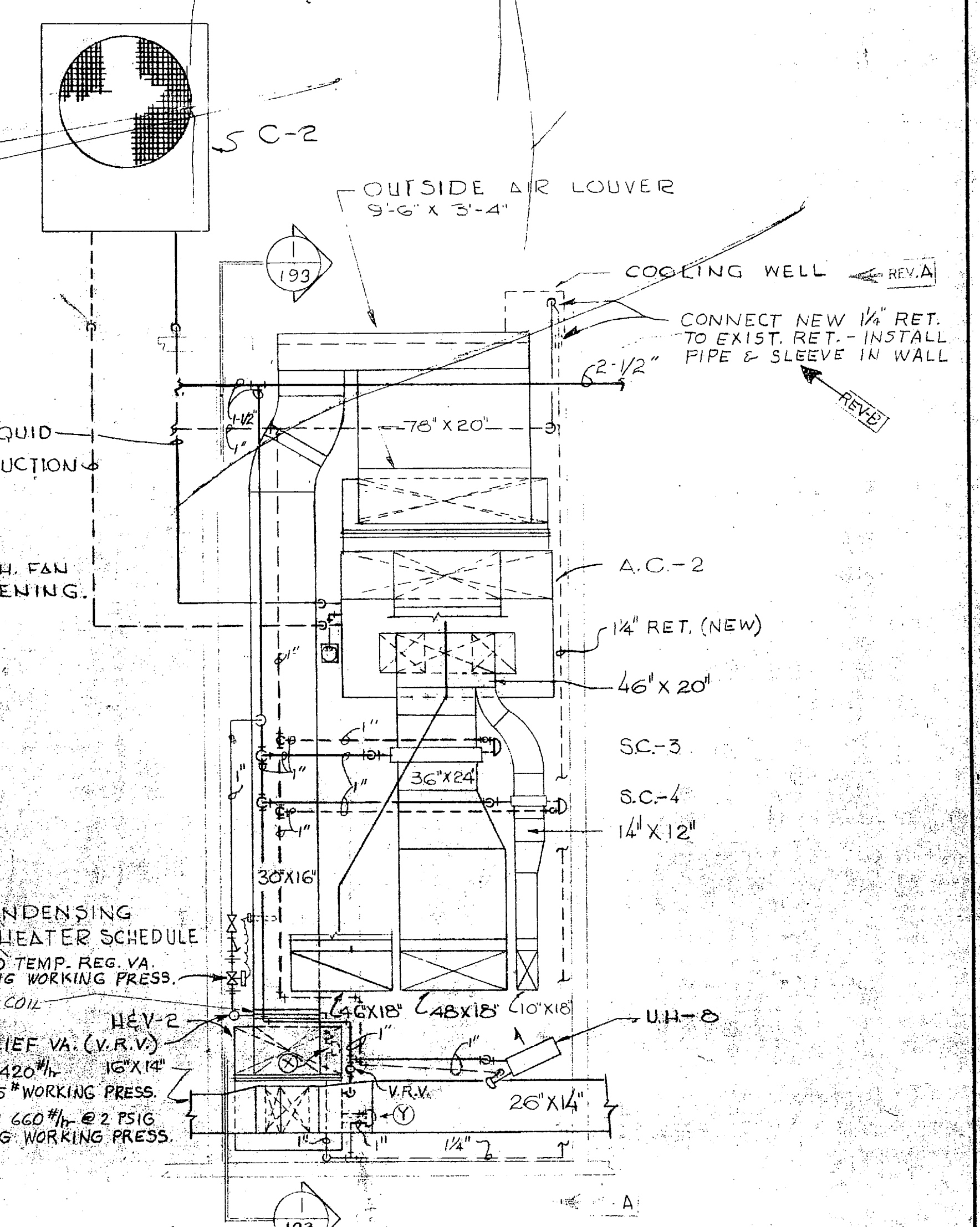
REVISIONS			
NO.	DESCRIPTION	DATE	APPROVED
A	RELOCATED COOLING WELL, ADD FIRE DAMPER	7-25-67	W. J. JOHNSON
B	REVISED AS BUILT CONDITIONS	3-20-72	W. J. JOHNSON



NOTE:
CEILING DIFF. UNLESS OTHERWISE NOTED. WILL BE ROUND, NECK SIZE AS SHOWN.

NOTE:
ALL EXH. GRILLES COVERING EXH. FAN INTAKES SIZED TO MATCH OPENING.

NOTE:
FOR STEAM CONV. EXH. FAN CONDENSING UNIT A.C. UNIT HEV. UNIT & UNIT HEATER SCHEDULE SEE SH. 195



RECORD DRAWING DATE FEB 27 1973	LOCKWOOD GREENE ENG., INC. SPARTANBURG, S.C. 29301 ARCHITECTS & ENGINEERS	DEPARTMENT OF THE NAVY NAVAL STATION NAVAL FACILITIES ENGINEERING COMMAND NORFOLK, VIRGINIA
	DES. WILLIAM BROWN KILGORE PROJ. MGR. RICHARD G. ENGLISH SUBMITTED BY: <i>William G. Gilpin</i> DATE: 1/24/73 FIRM MEMBER: <i>William G. Gilpin</i> PRINCIPAL	ATLANTIC DIVISION HELICOPTER GROUP TRAINING FACILITY MCAF - NEW RIVER, JACKSONVILLE, N.C. ORGANIZATIONAL MAINTENANCE HANGAR AC, HEAT & VENT.-PLAN & DETAILS
NAVY CAROLINA REGISTERED SEAL 3910 W. J. JOHNSON REGISTERED PROFESSIONAL ENGINEER	NAVFAC DRAWING NO. 1198741 CONSTR. CONTR. NO. NB88179 SCALE AS SHOWN SPEC. 88179/67 SHEET 103 OF 103	APPROVED FOR COMMANDER, NAVFAC

