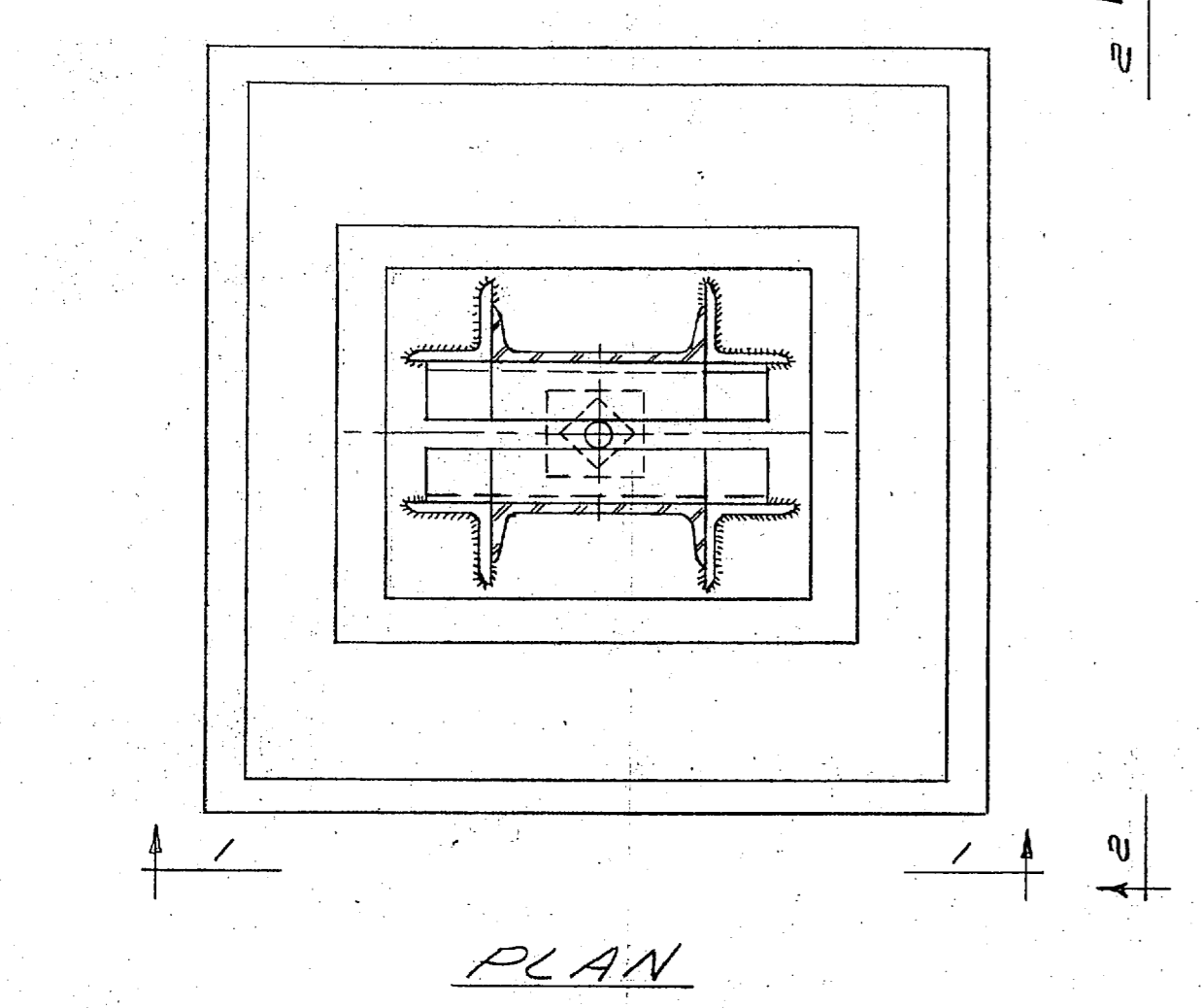
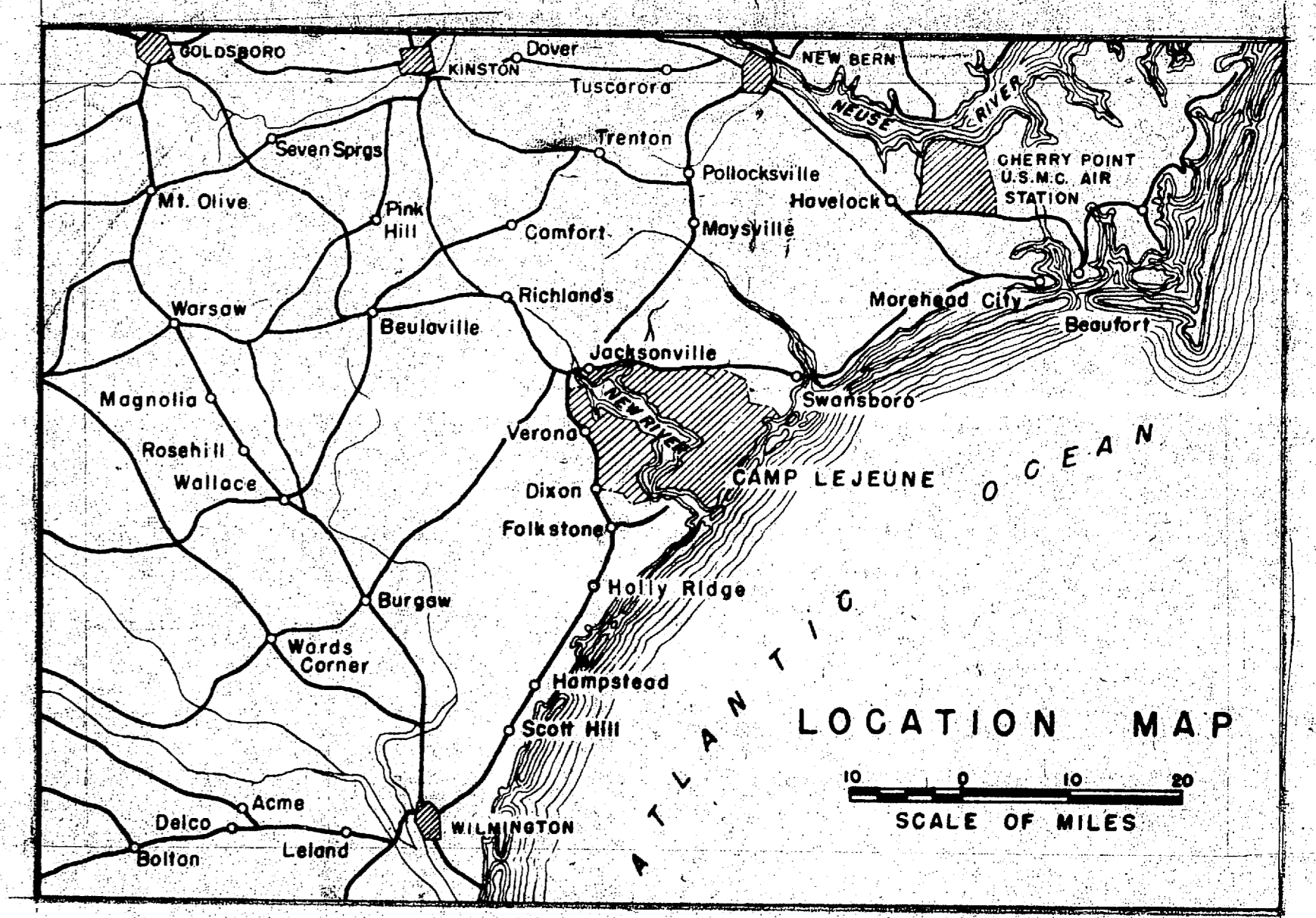
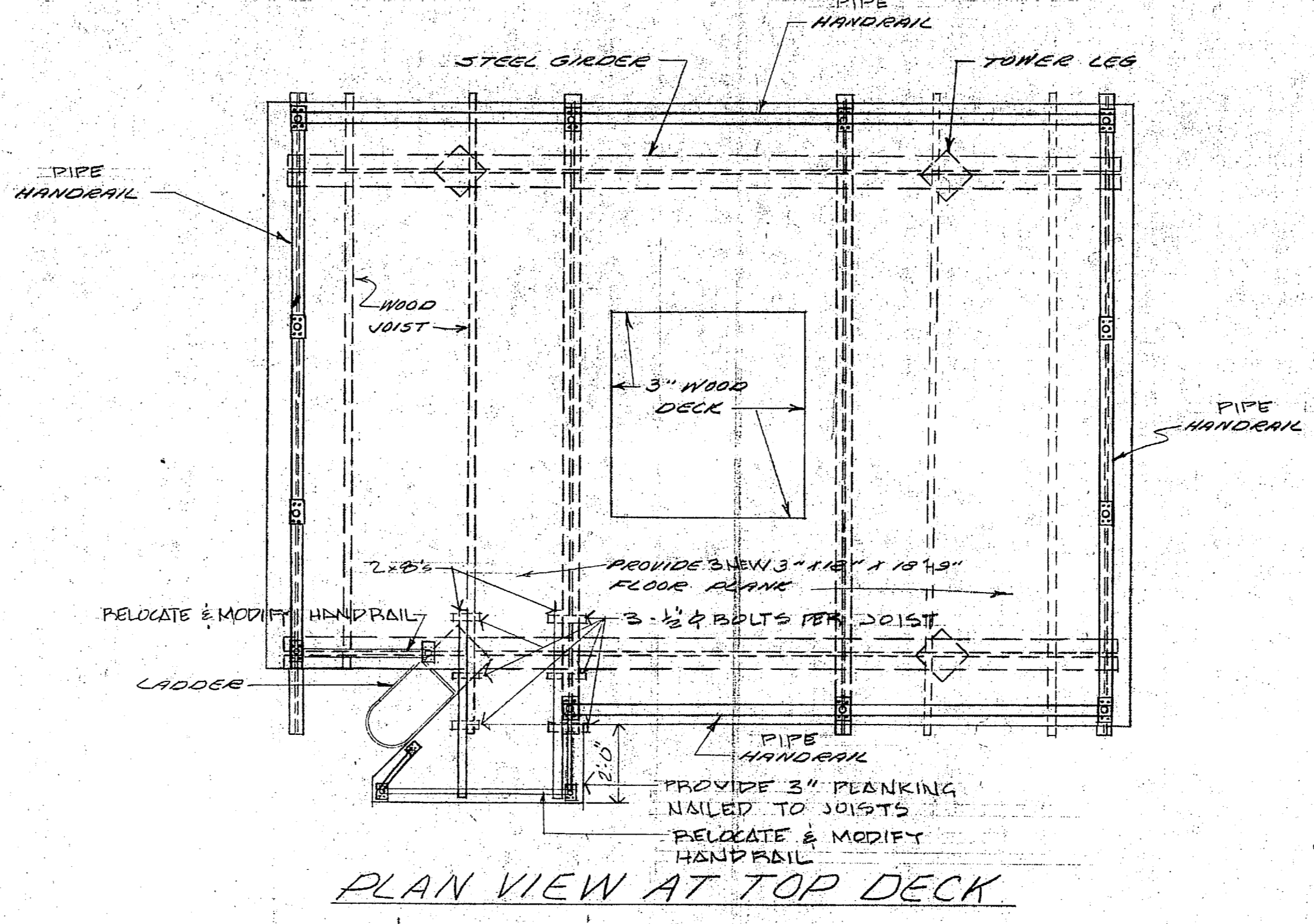
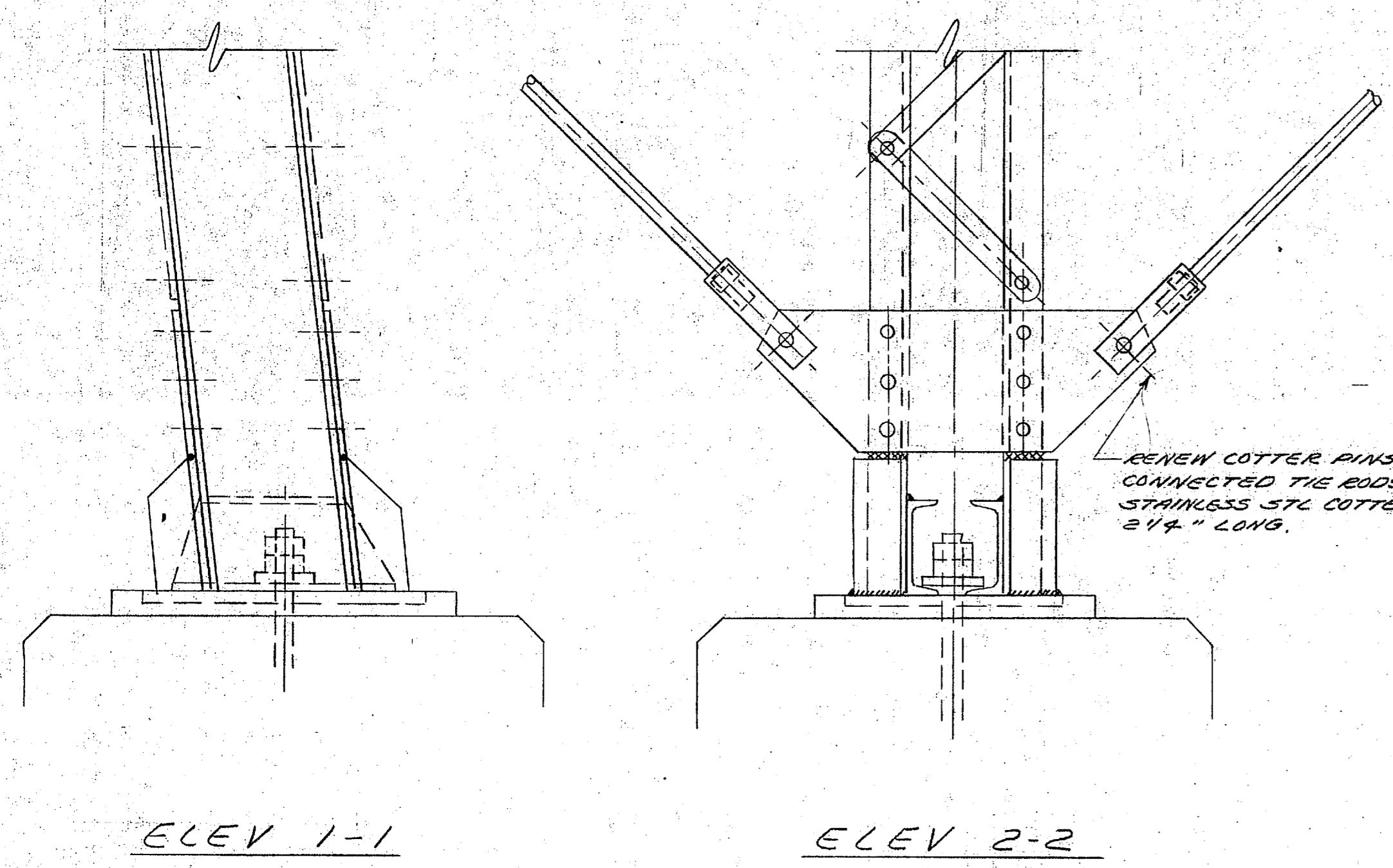
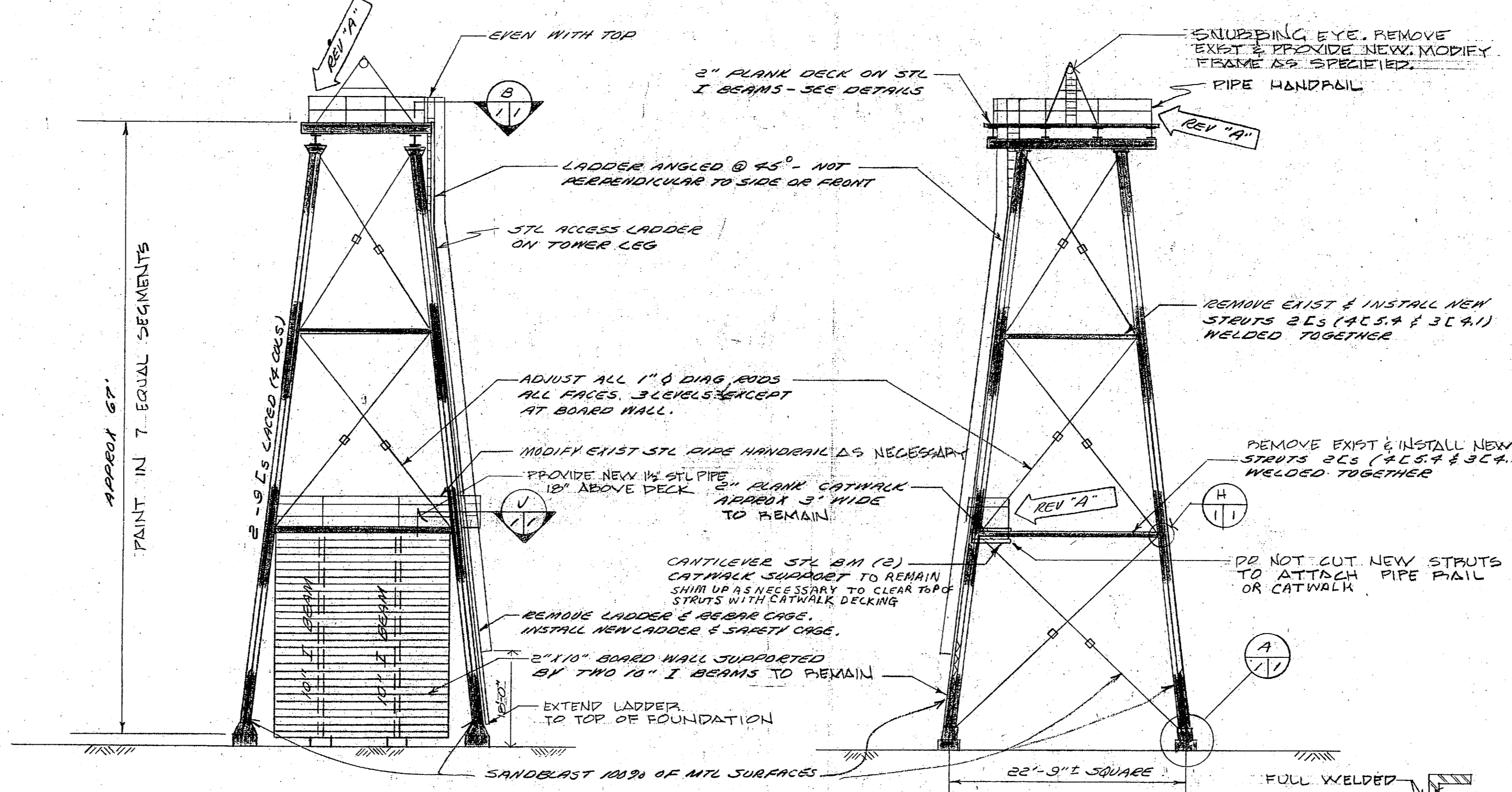


REVISIONS			
SYM	DESCRIPTION	DATE	APPROVED
1	ADDED AND REVISED DETAILS AS SHOWN	11/1/52	[Signature]

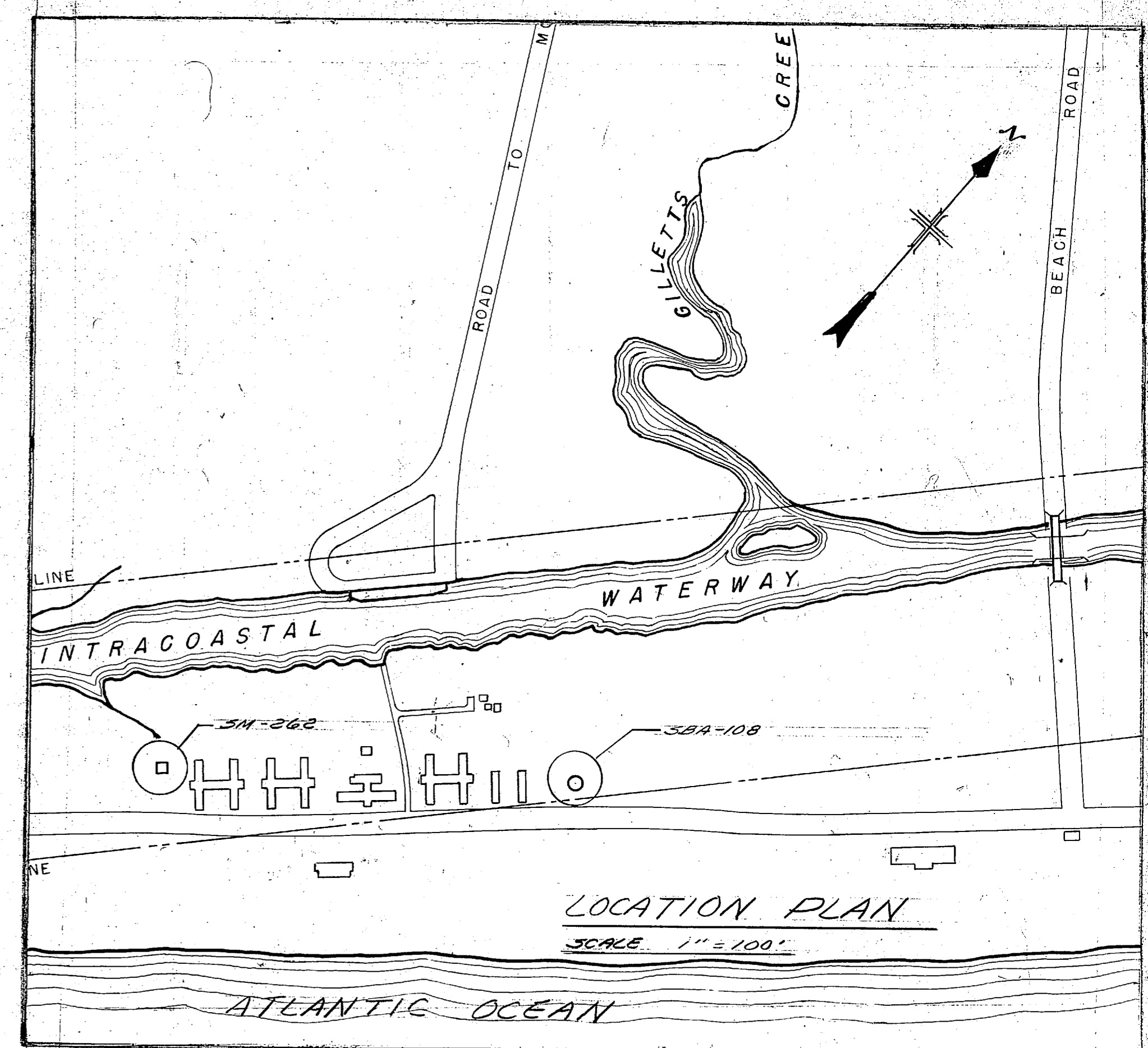


DETAIL (A) BASE OF TOWER LEG
SCALE 1/2" = 1'-0"

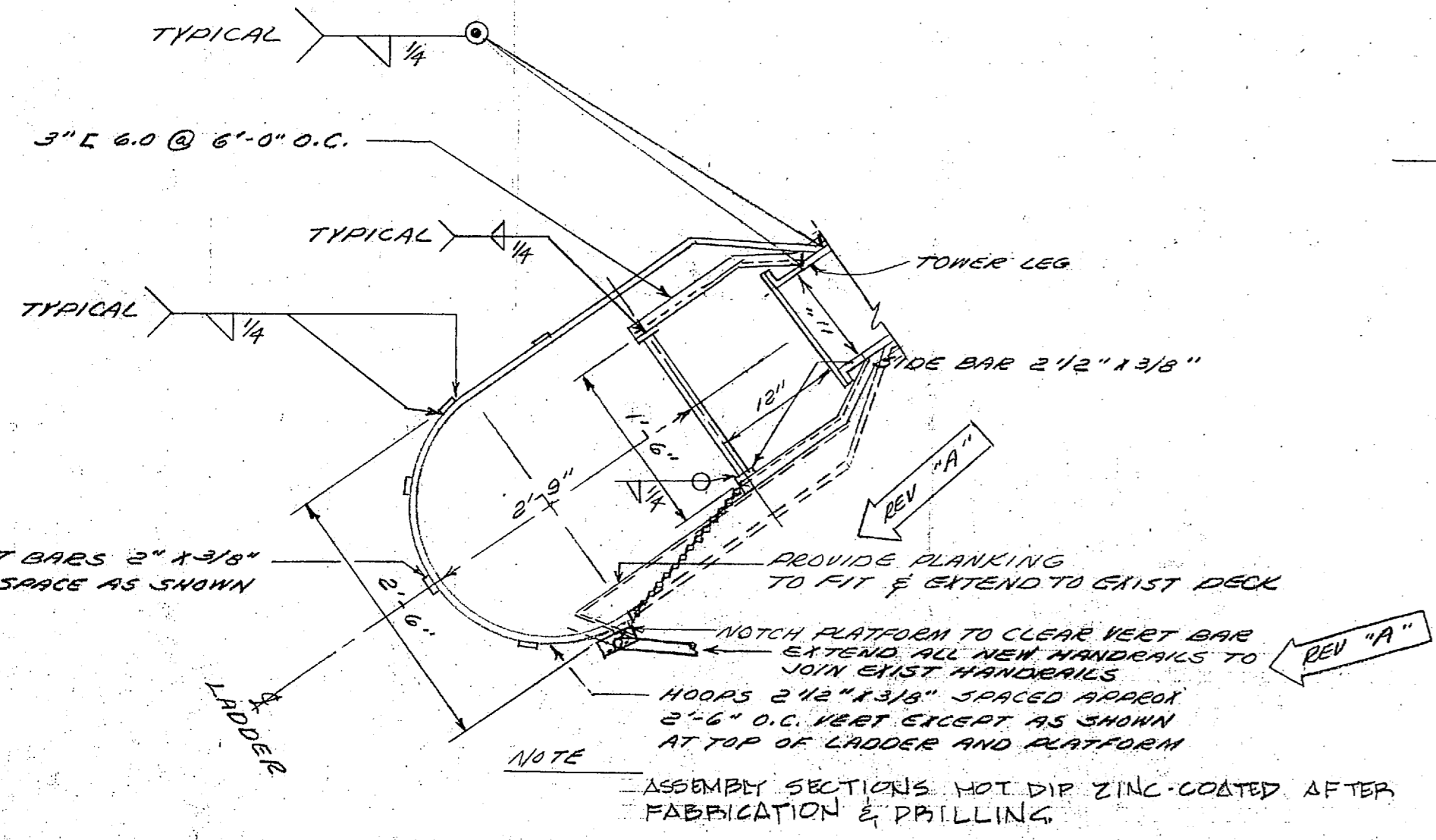


FRONT ELEVATION
SCALE APPROX 3/32" = 1'-0"

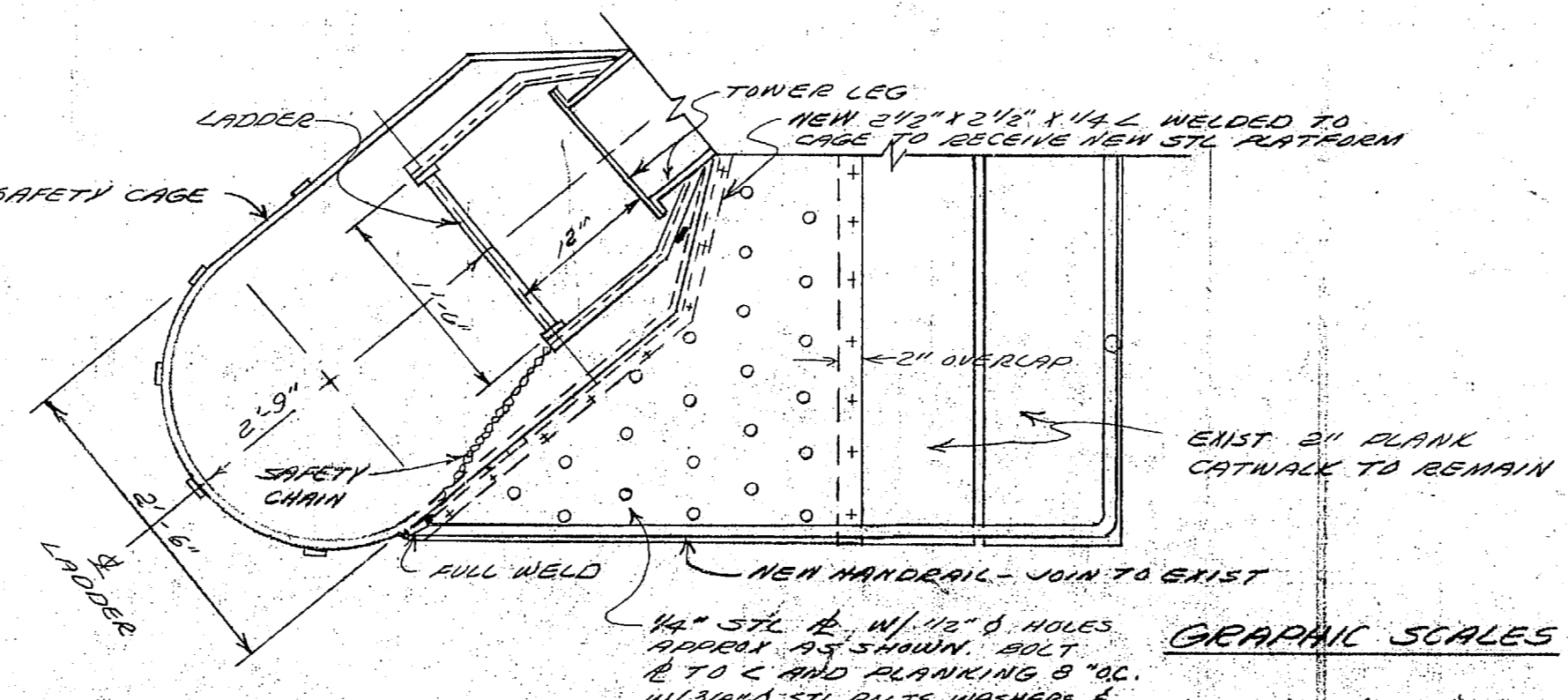
SIDE ELEVATION
SCALE APPROX 3/32" = 1'-0"



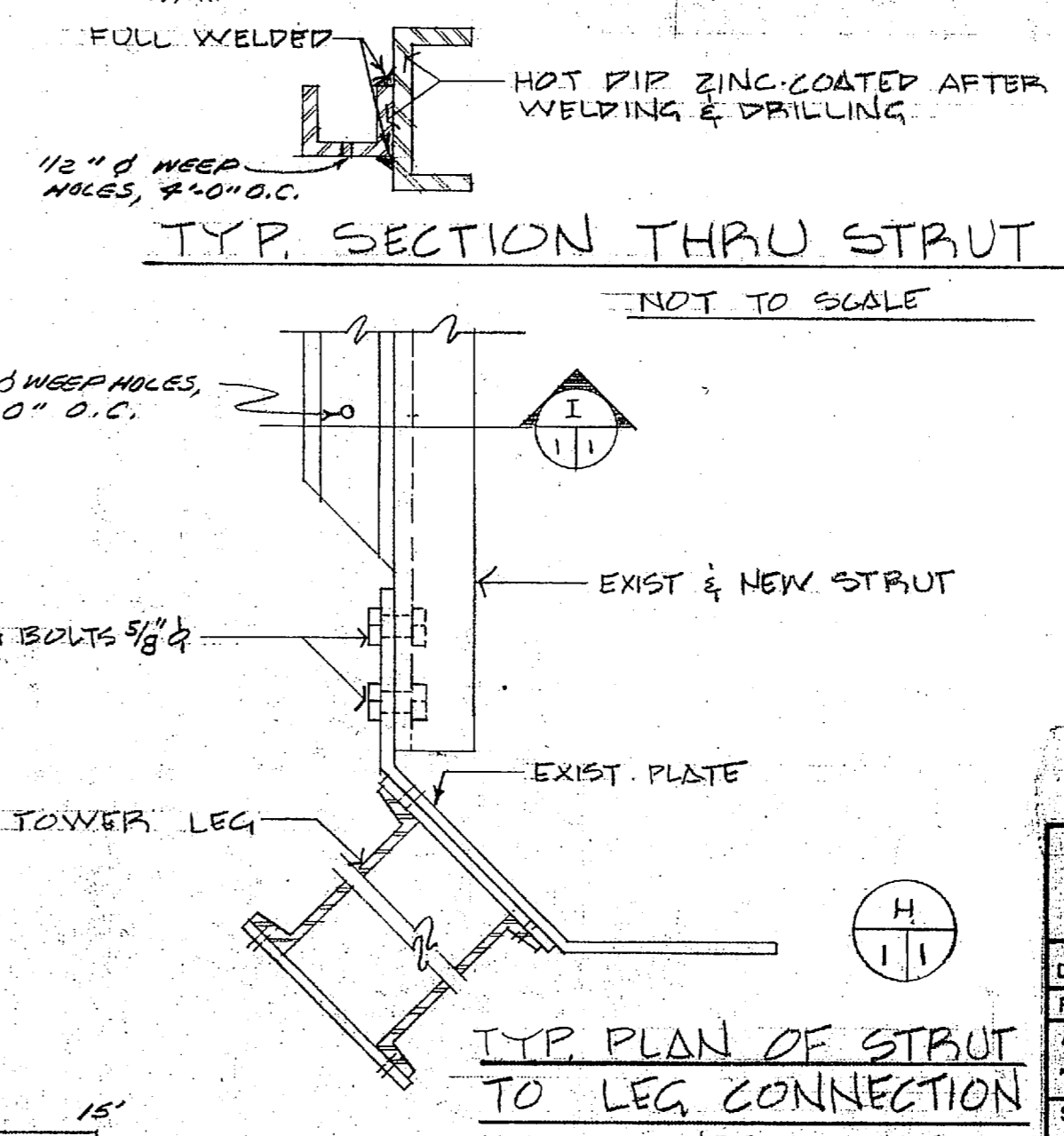
LOCATION PLAN
SCALE 1" = 100'



LADDER WITH SAFETY CAGE
NOT TO SCALE

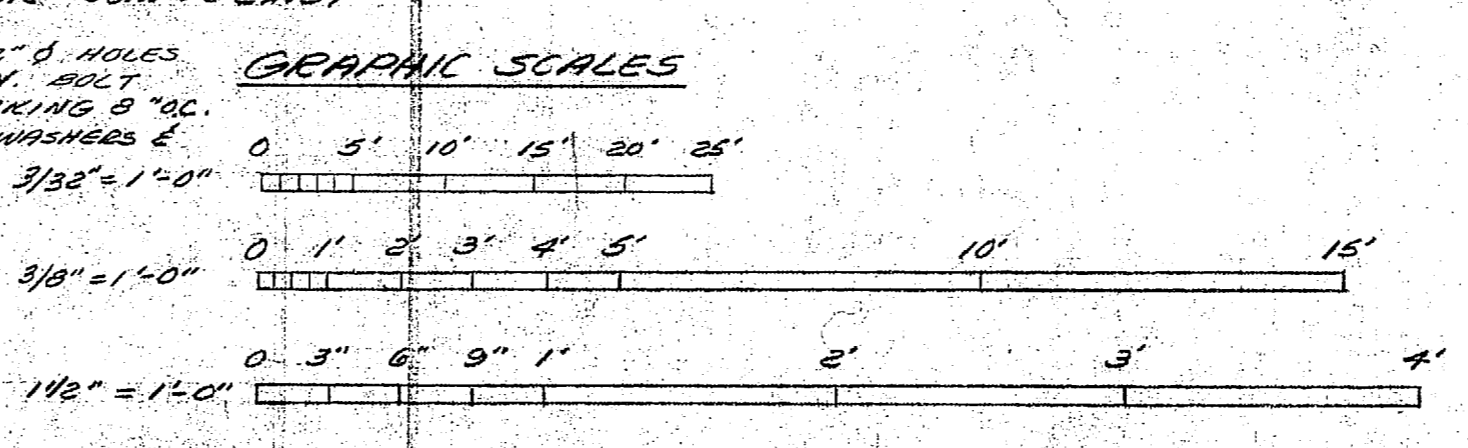


PLATFORM AT CATWALK
NOT TO SCALE



TYP. SECTION THRU STRUT TO LEG CONNECTION
NOT TO SCALE

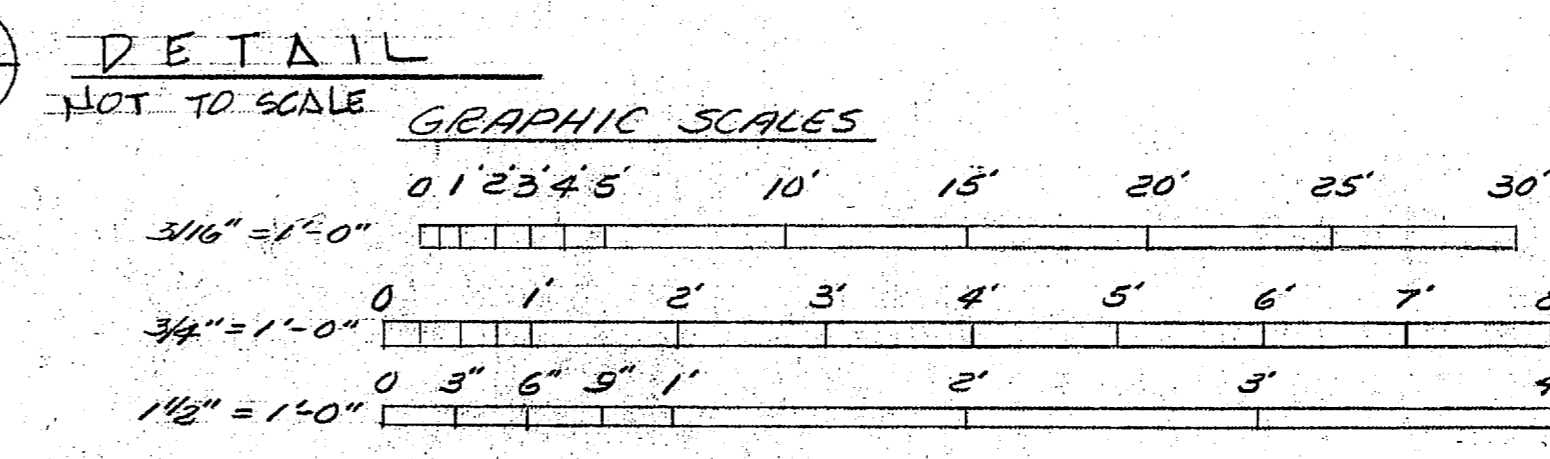
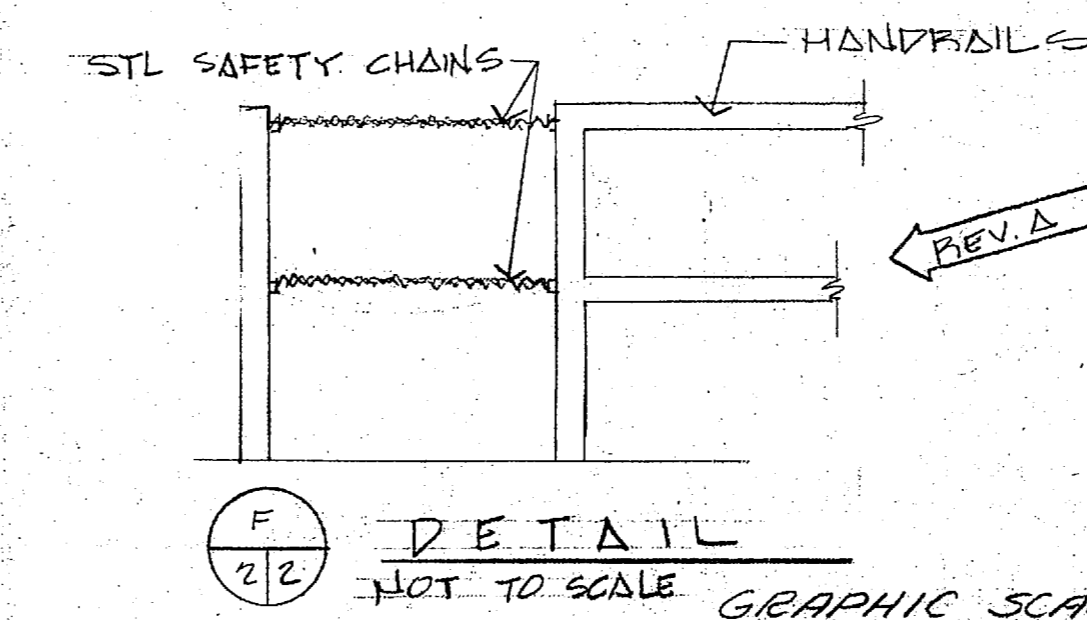
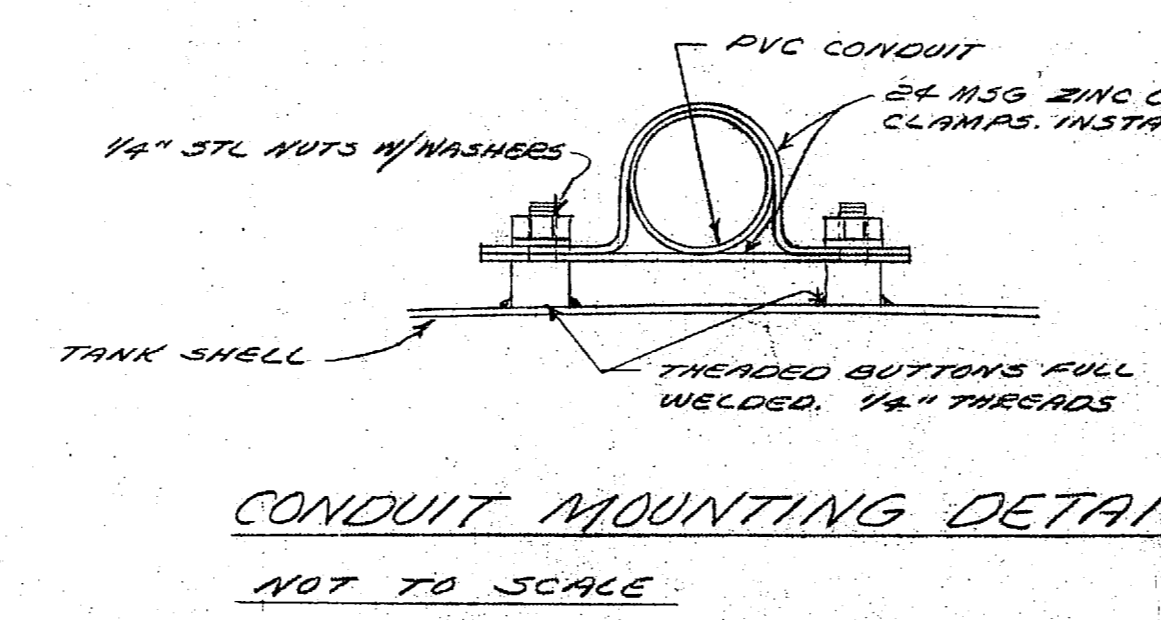
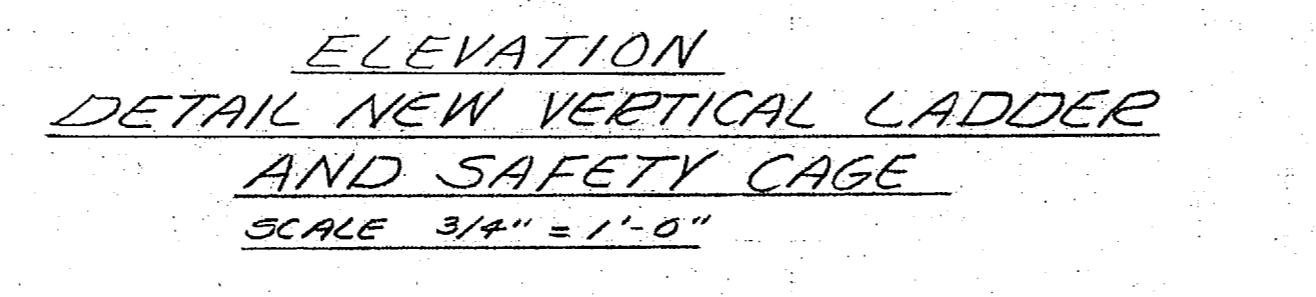
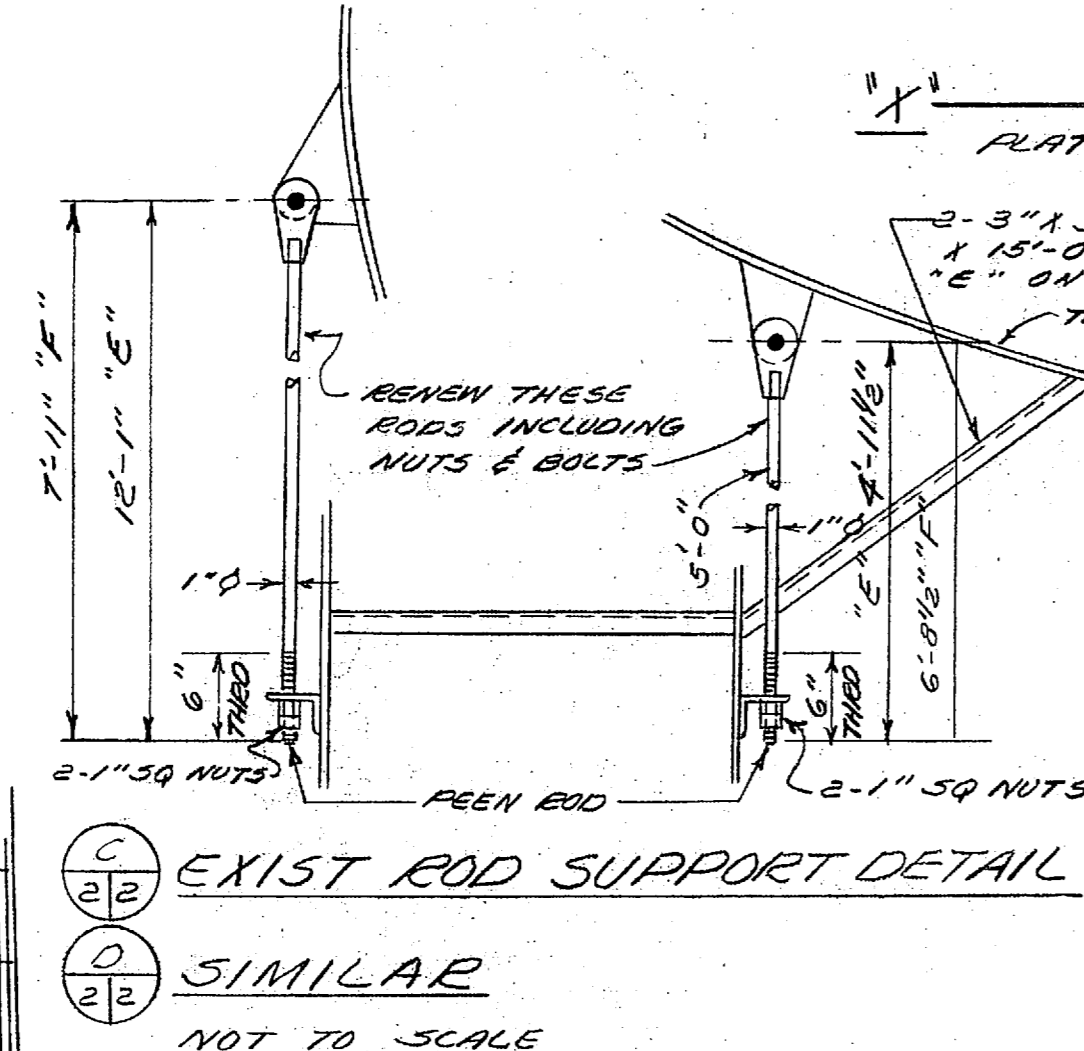
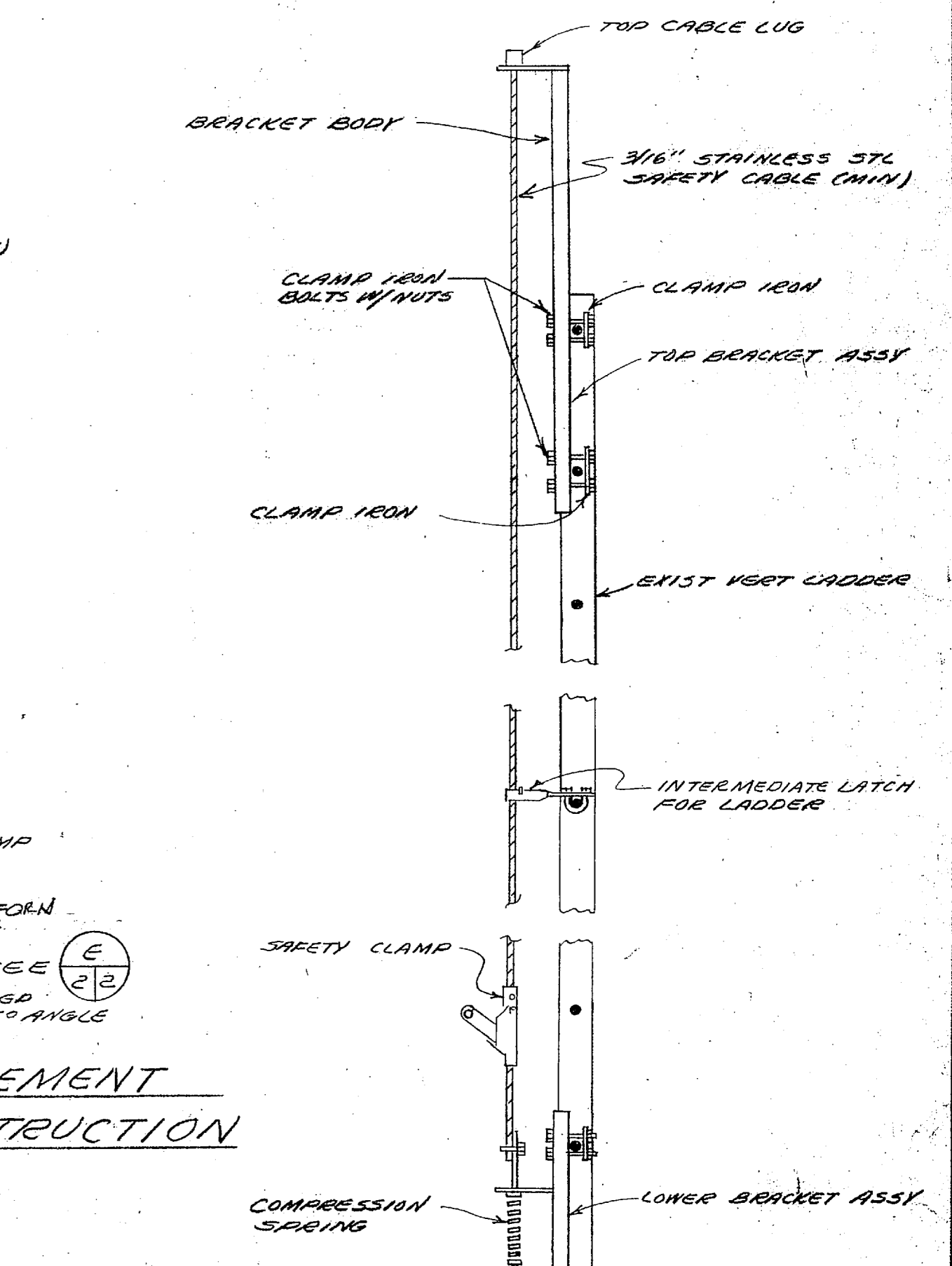
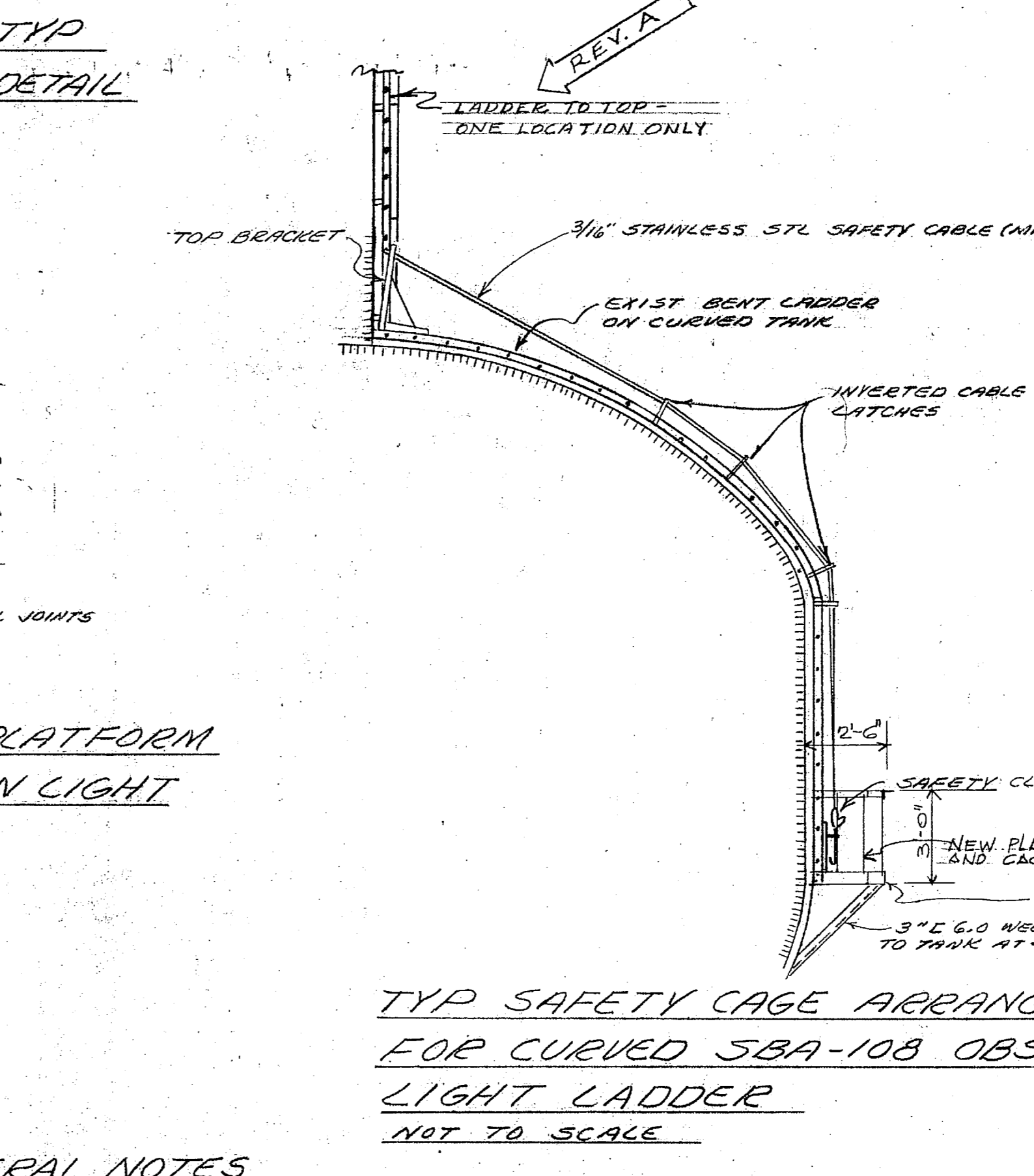
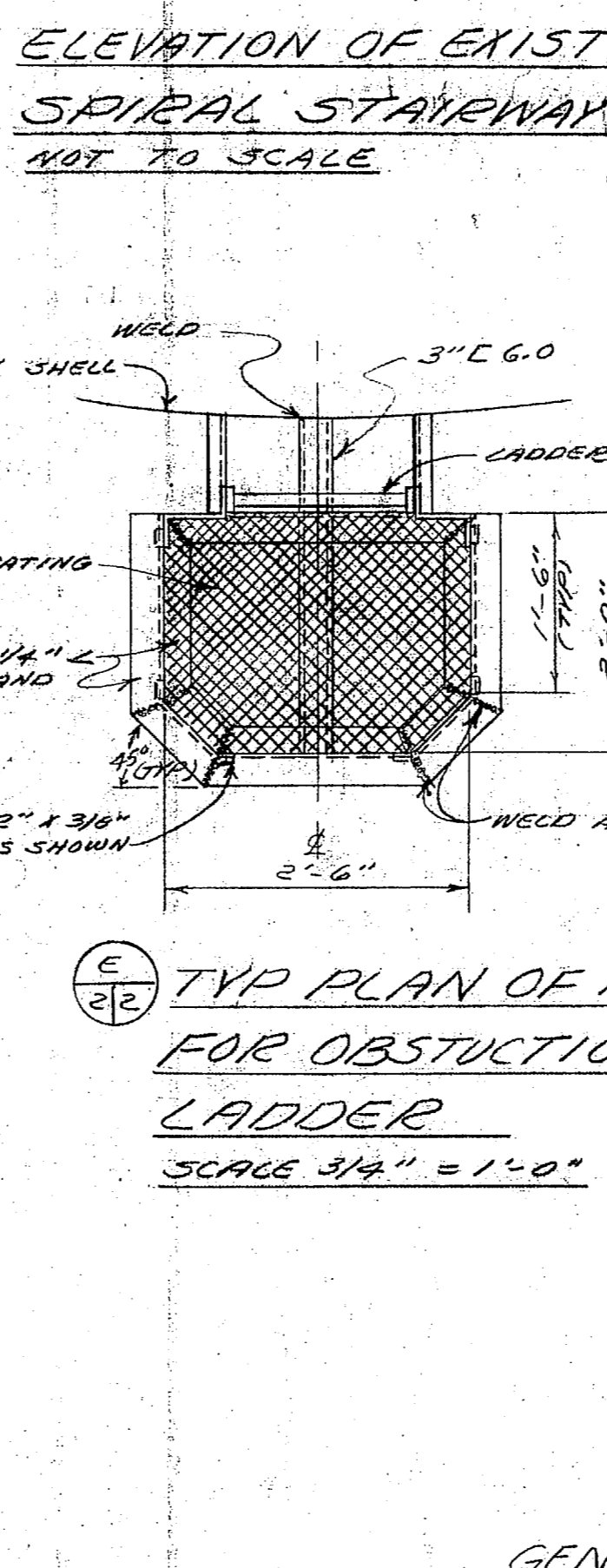
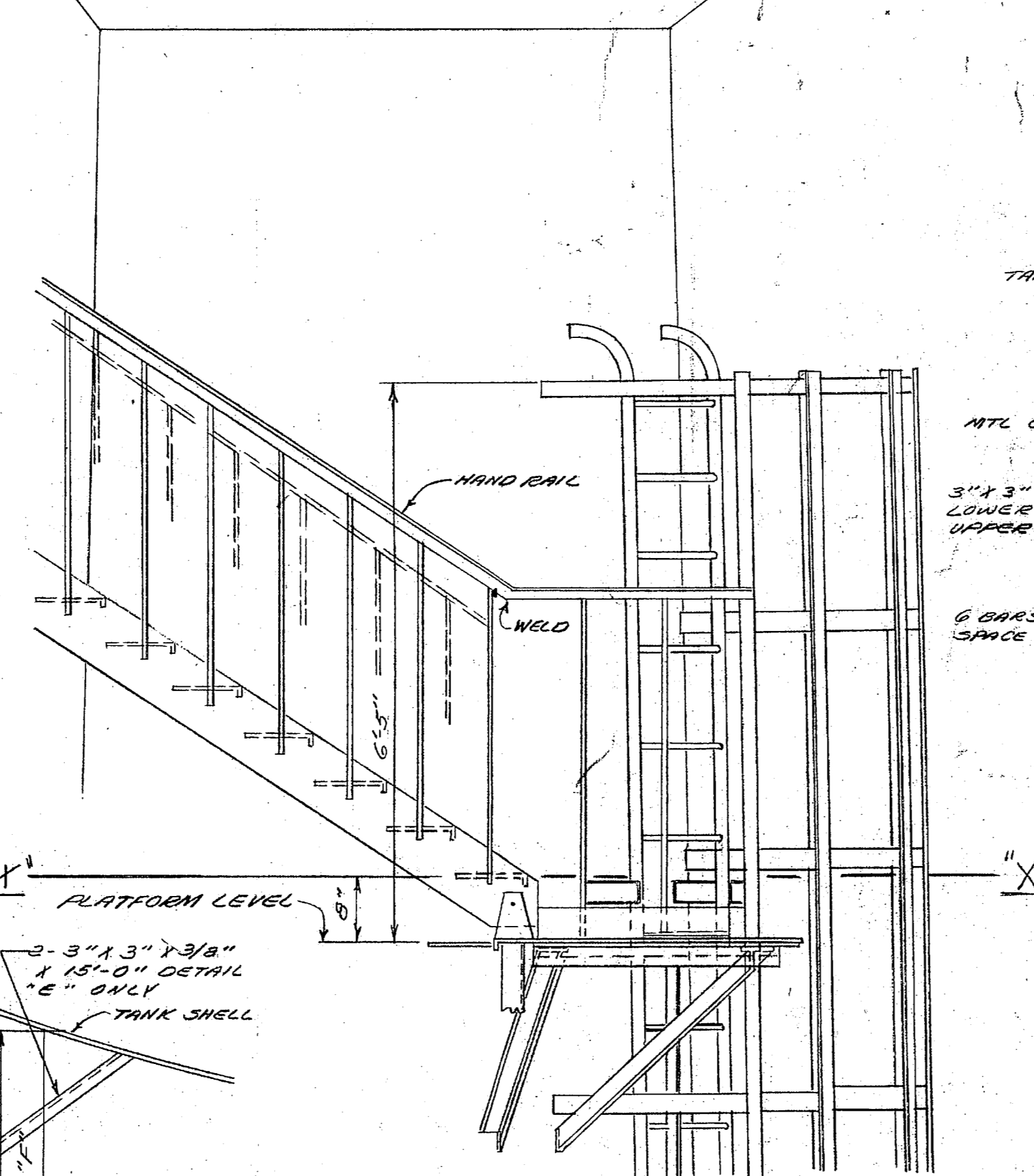
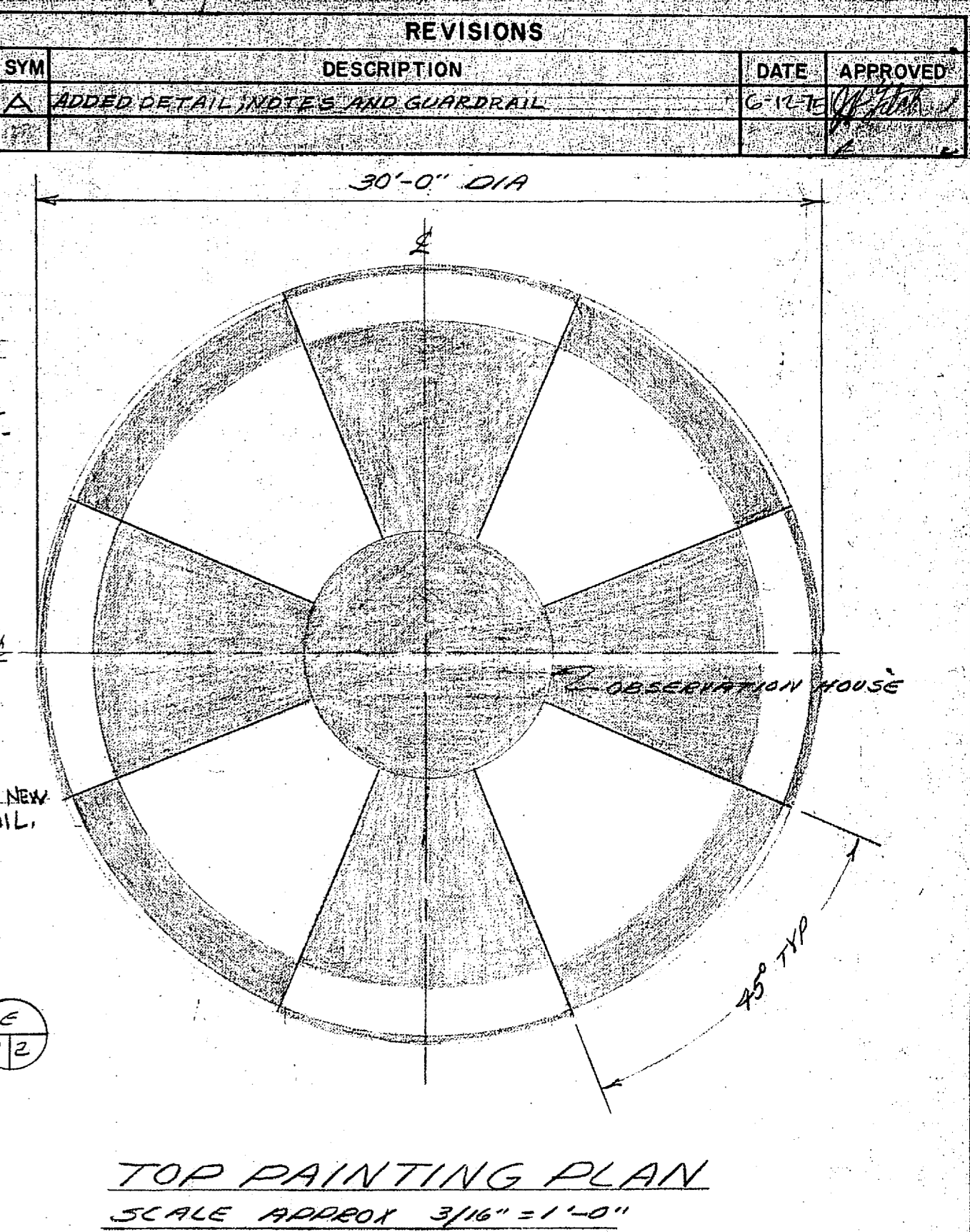
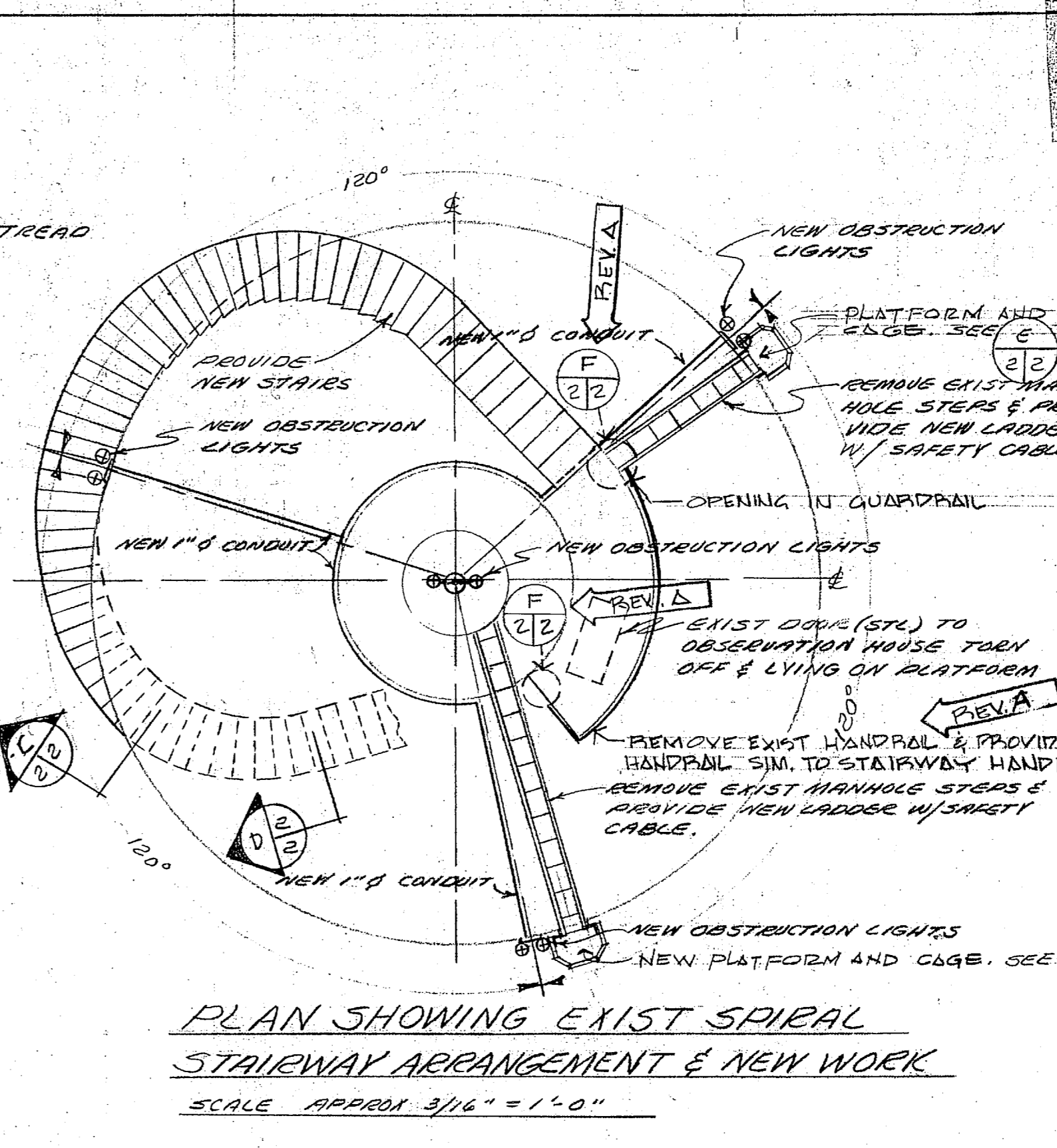
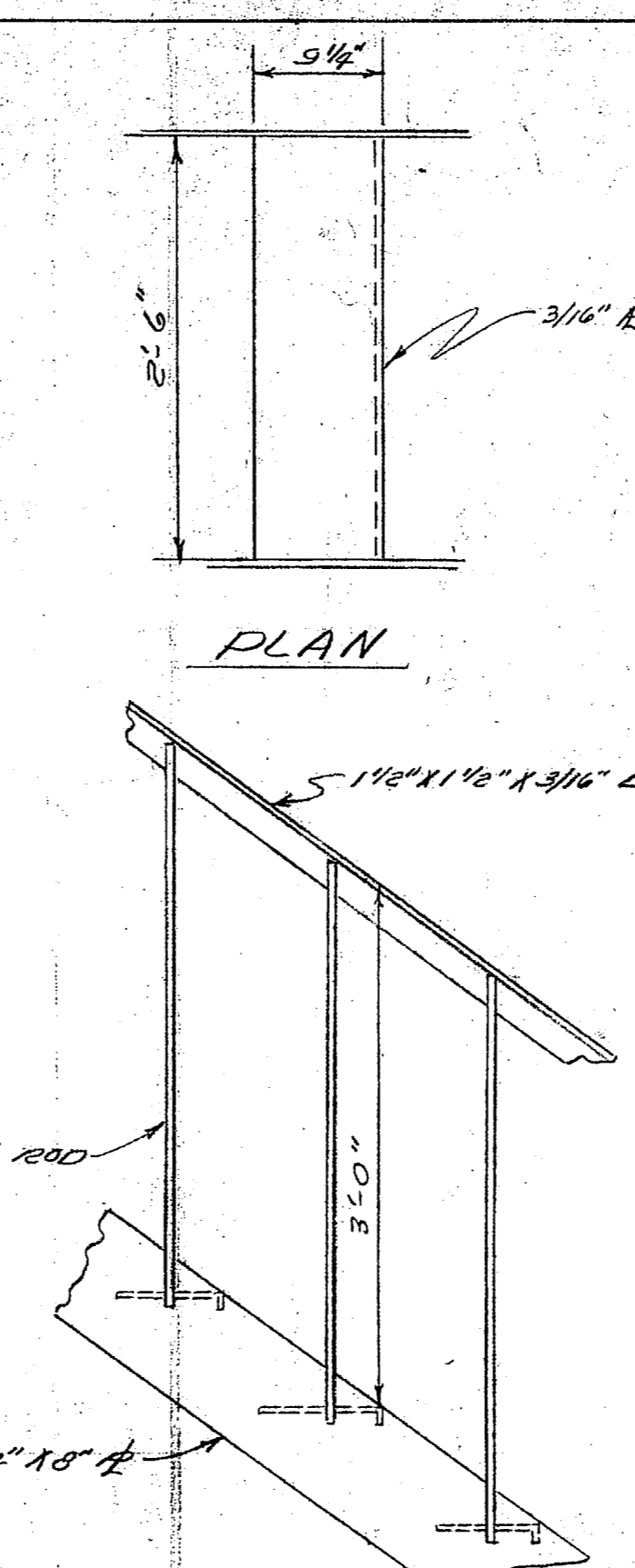
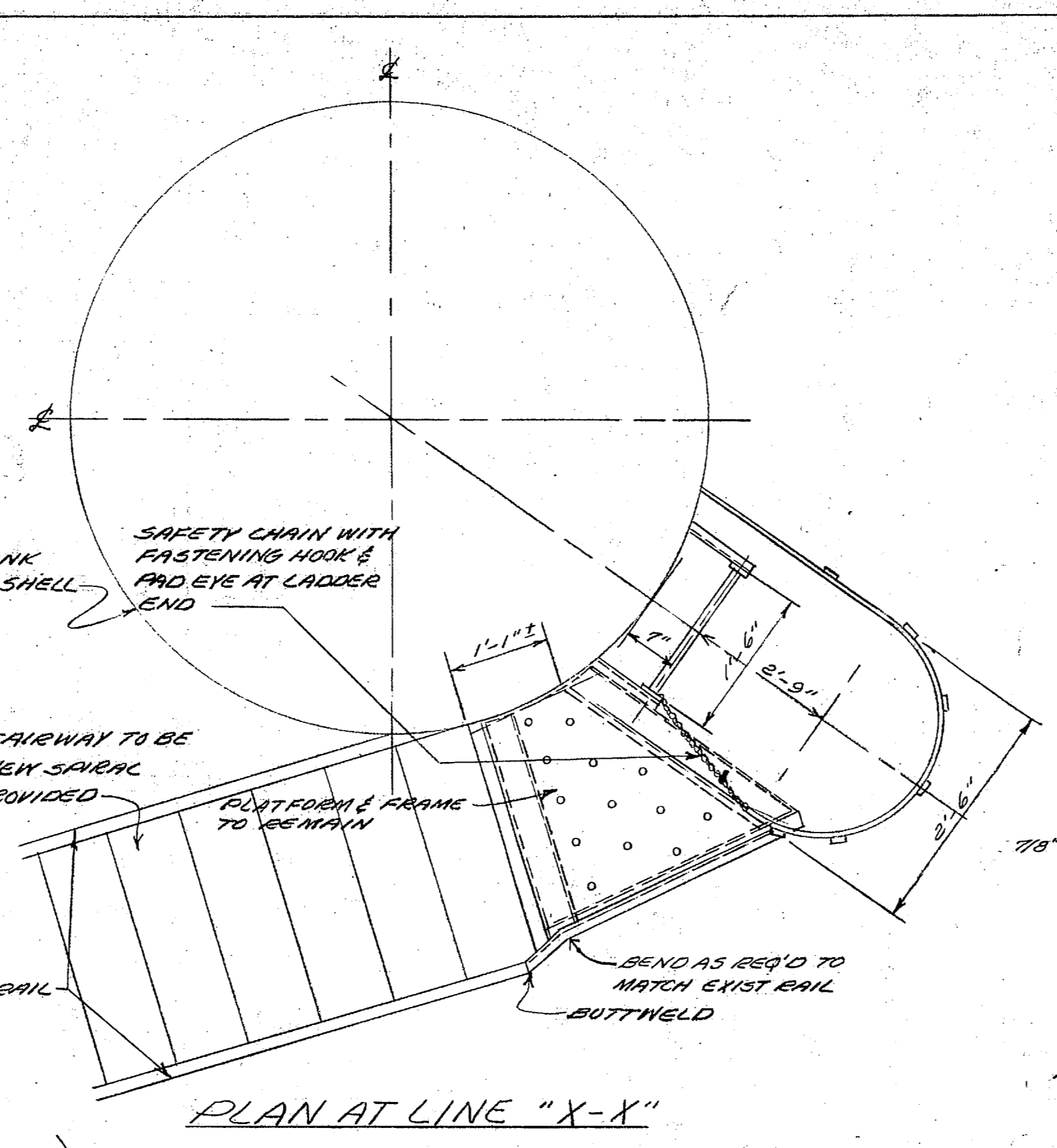
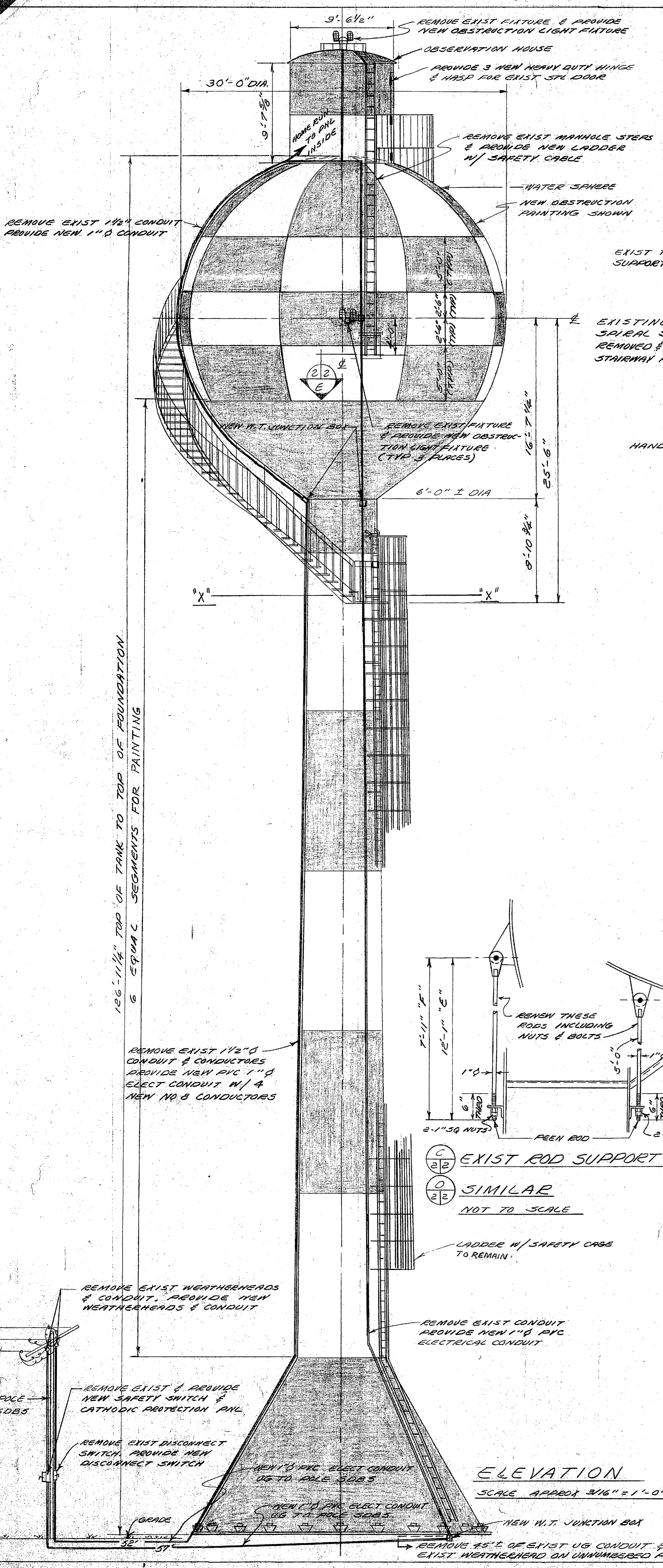
LEGEND	
(A)	DETAIL LETTER
(A/V)	SHEET WHERE DETAIL IS SHOWN
(A/A)	DETAIL SYMBOL
(A)	DETAIL SYMBOL



PUBLIC WORKS DEPT. MARINE CORPS BASE CAMP LEJEUNE, N.C.		DEPARTMENT OF THE NAVY NAVAL FACILITIES ENGINEERING COMMAND ATLANTIC DIVISION NORFOLK, VIRGINIA	
DESIGNED BY: [Signature]		DRAWN BY: [Signature]	
CHECKED BY: [Signature]		DATE: 11/1/52	
APPROVED BY: [Signature]		DATE: 11/1/52	
SHEET NO. 1		SHEET 1 OF 2	

SATISFACTORY TO
J.H. Coakley
BASE MAINTENANCE CHIEF
DATE 11/1/52

REVISIONS			
SYM	DESCRIPTION	DATE	APPROVED
A	ADDED DETAIL NOTES AND GUARDRAIL	6-14-73	[Signature]

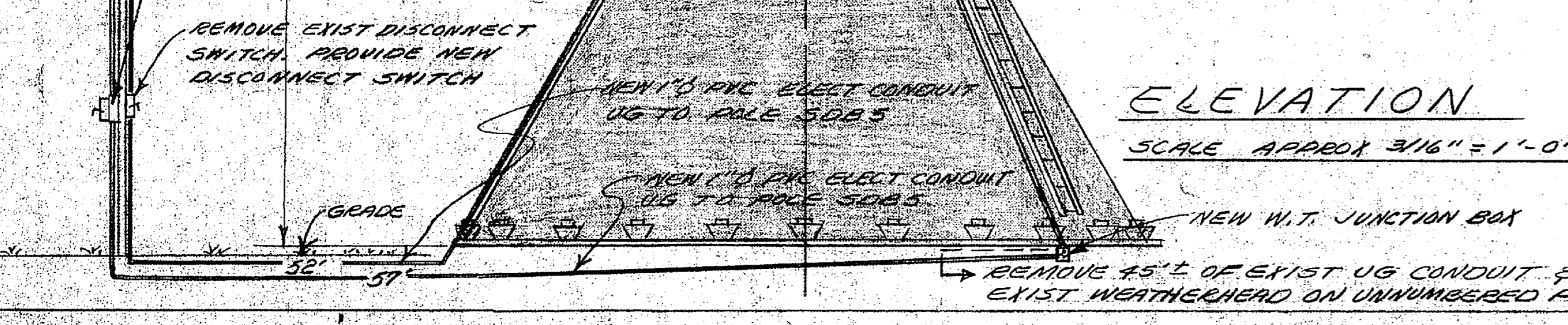


- GENERAL NOTES**
- DIMENSIONS OF ORIGINAL STRUCTURE OBTAINED FROM SHIP DRAWINGS. VERIFY IN FIELD AS REQUIRED.
 - EXIST SPIRAL STAIRWAY ON WATER TOWER & LADDER ON TRAINING TOWER ARE BOTH UNSURE DUE TO DEGRADATION.
 - WATERSPHERE SHALL BE "OBSTRUCTION PAINTED" ALTERNATING THE INTERNATIONAL ORANGE & WHITE SEGMENTS AS SHOWN. PAINT LADDER & SPIRAL STAIRWAY SAME AS ADJACENT SURFACES.
 - SANDBLAST 308 SBA-108

LEGEND

■ PAINT INTERNATIONAL ORANGE

□ PAINT WHITE



SATISFACTORY TO

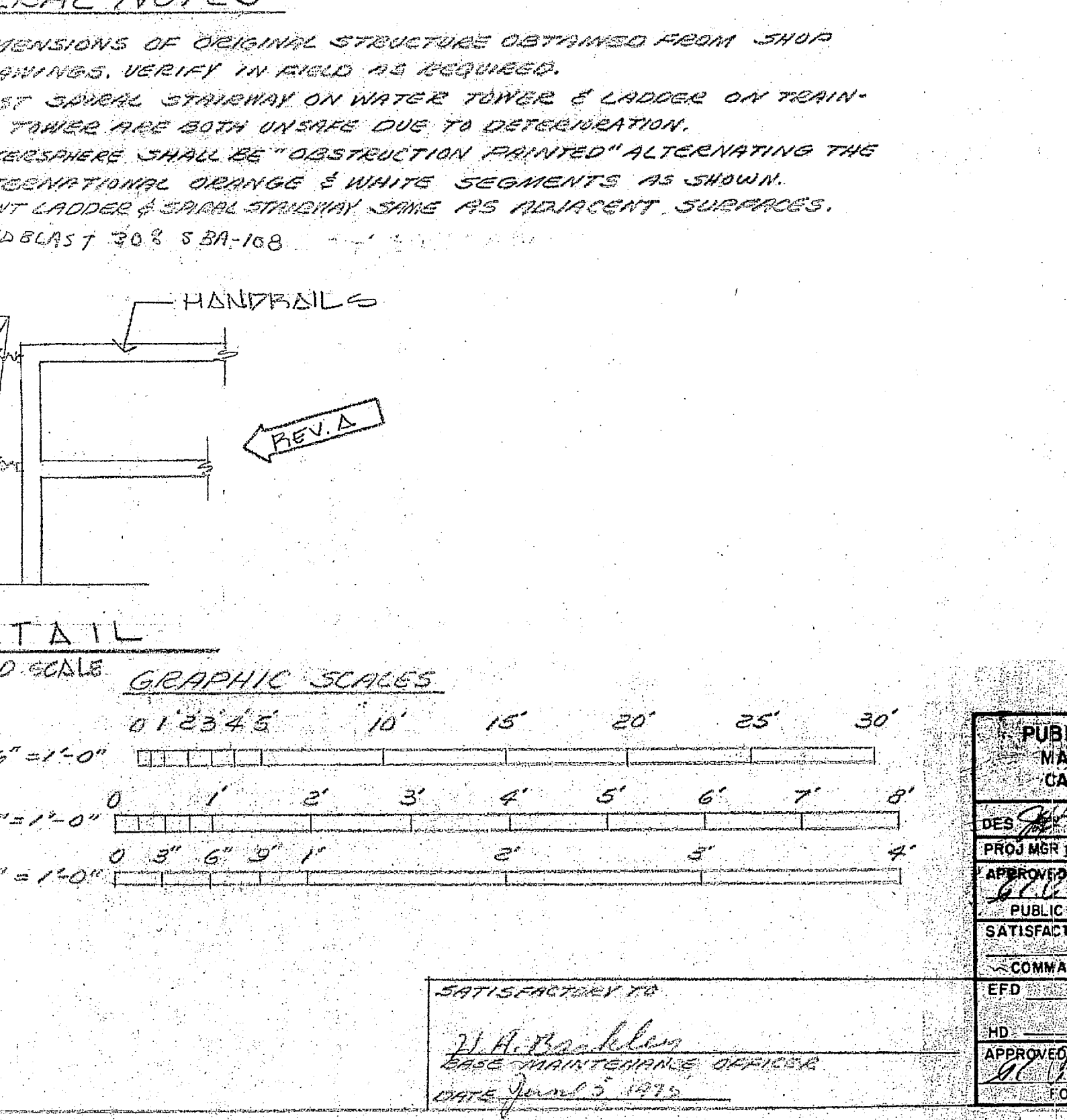
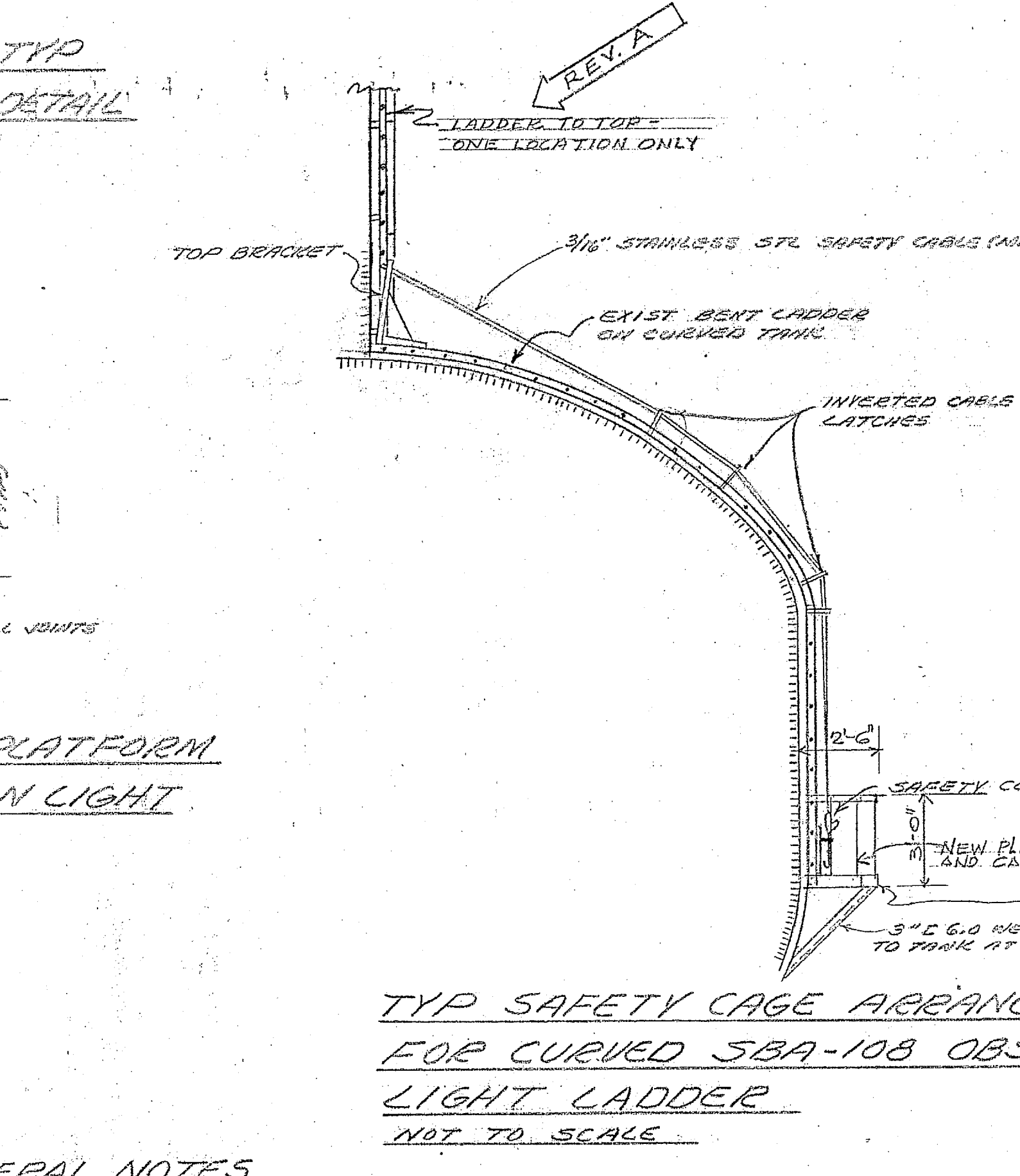
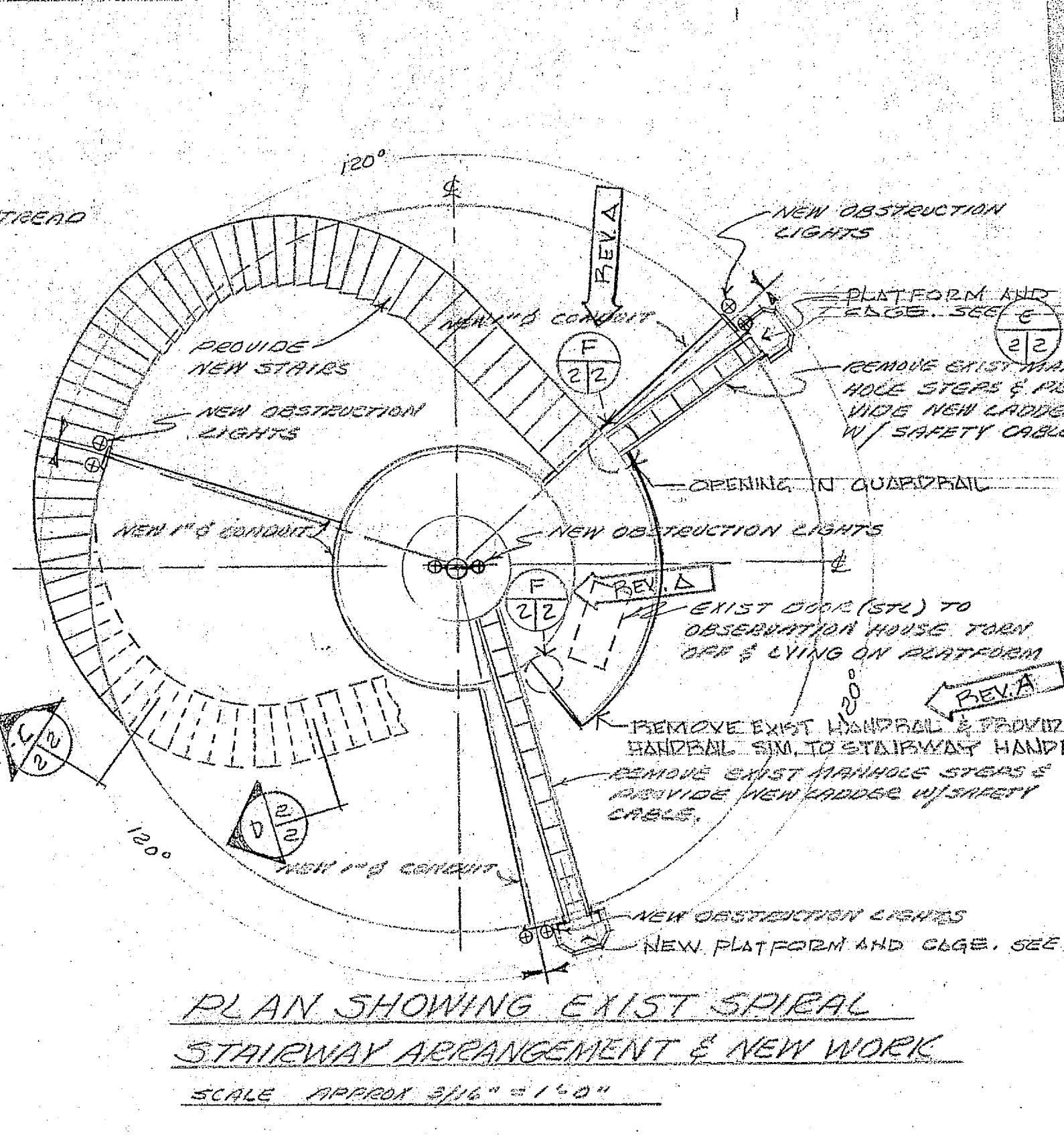
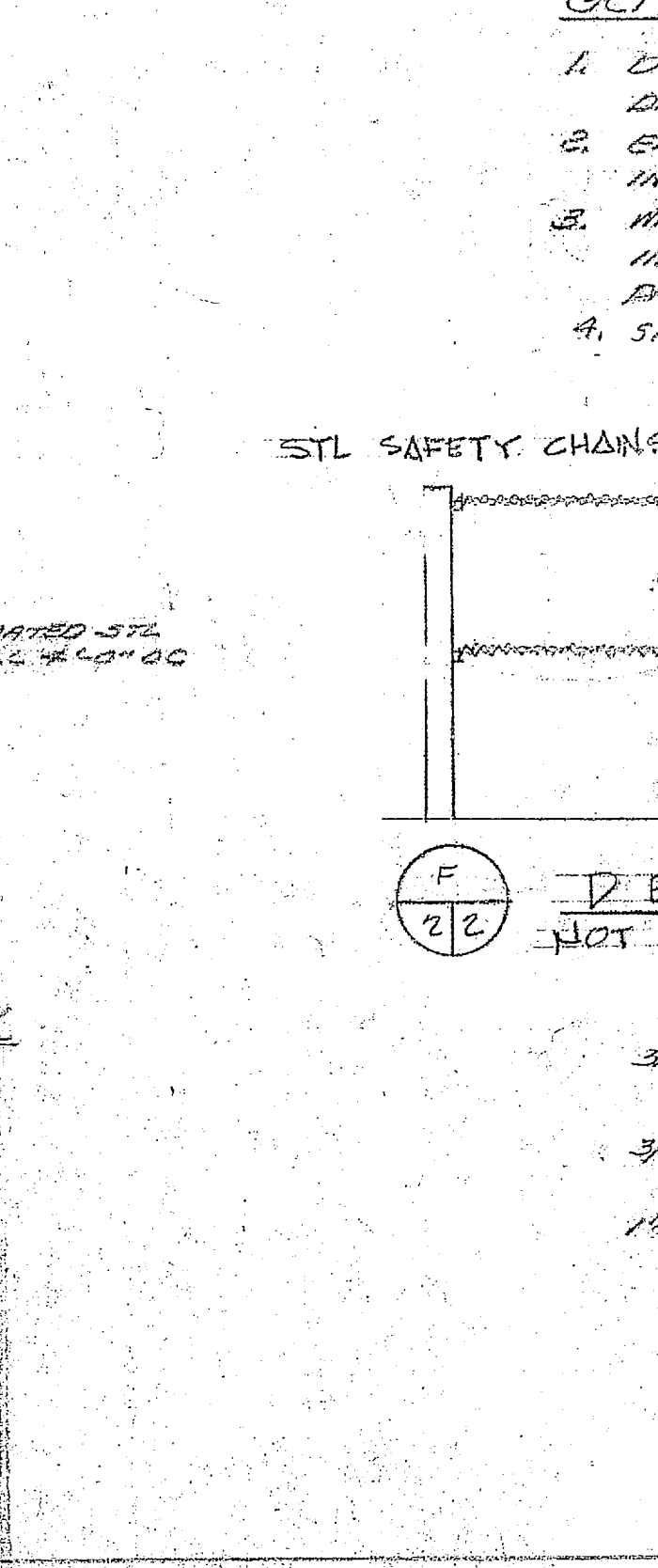
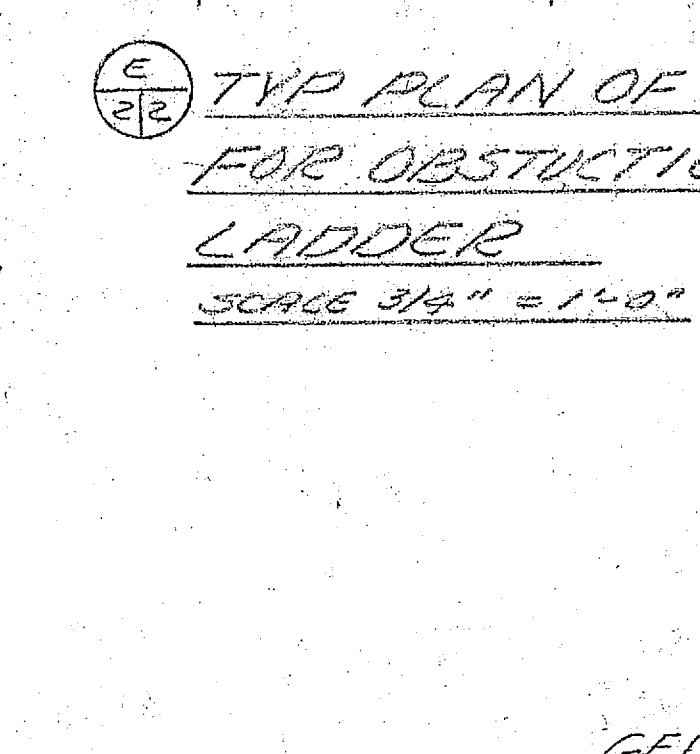
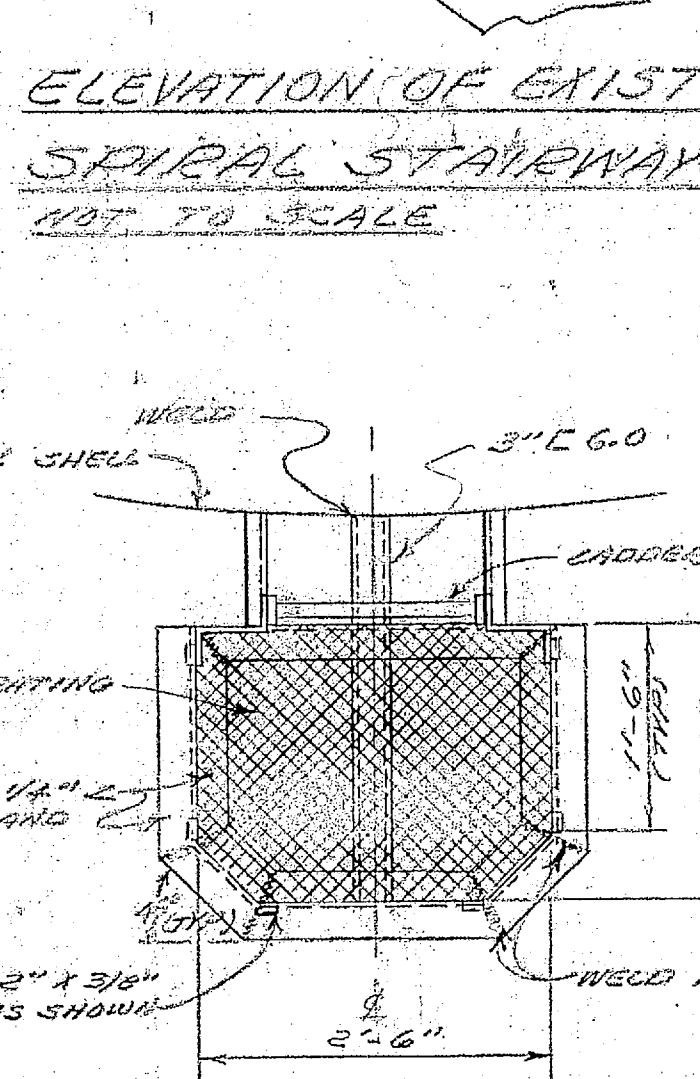
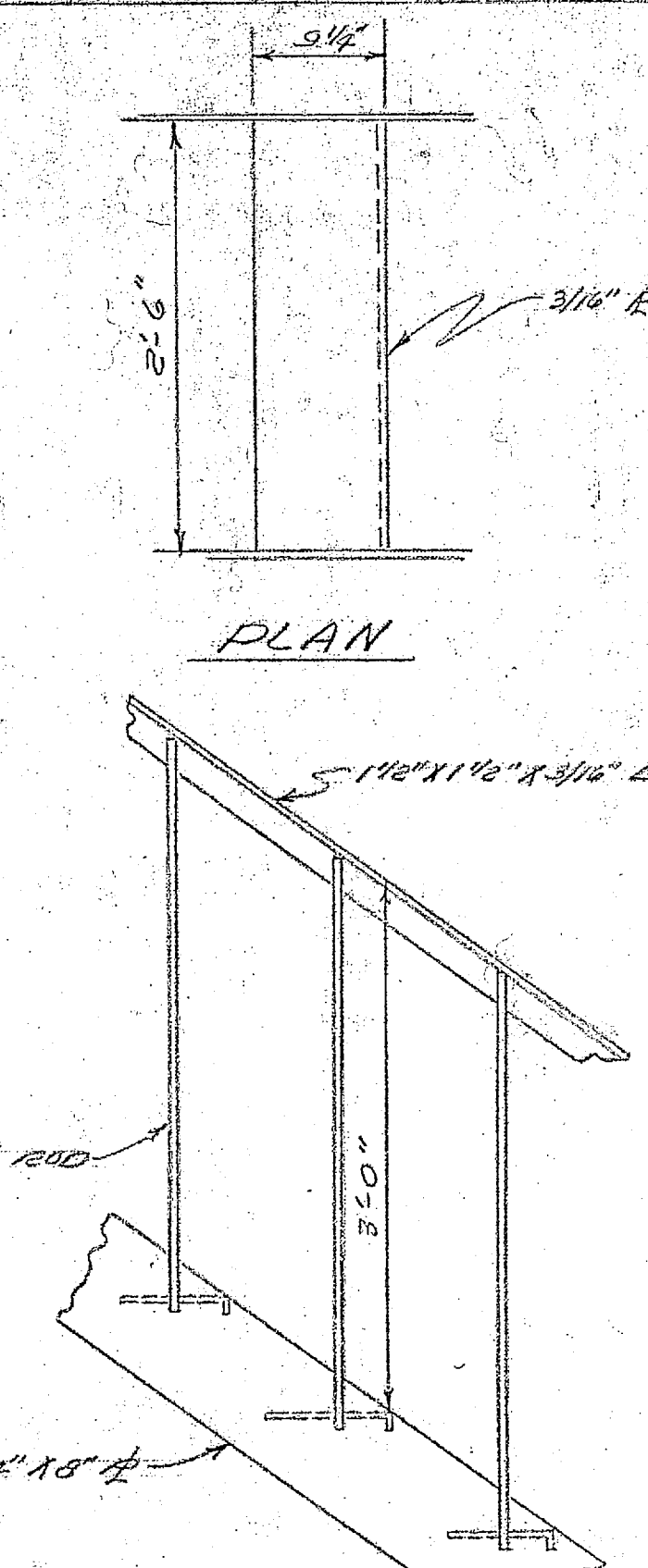
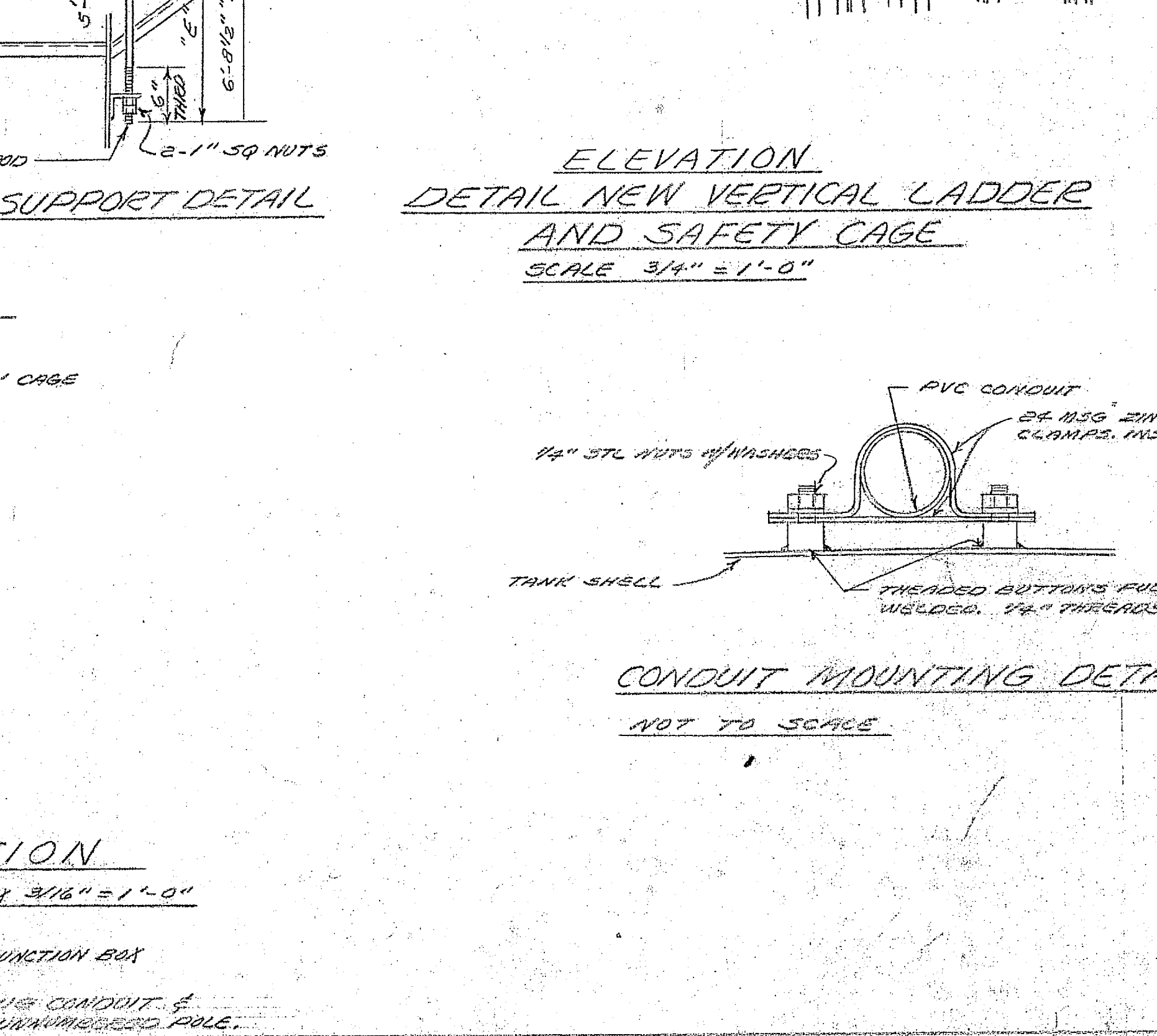
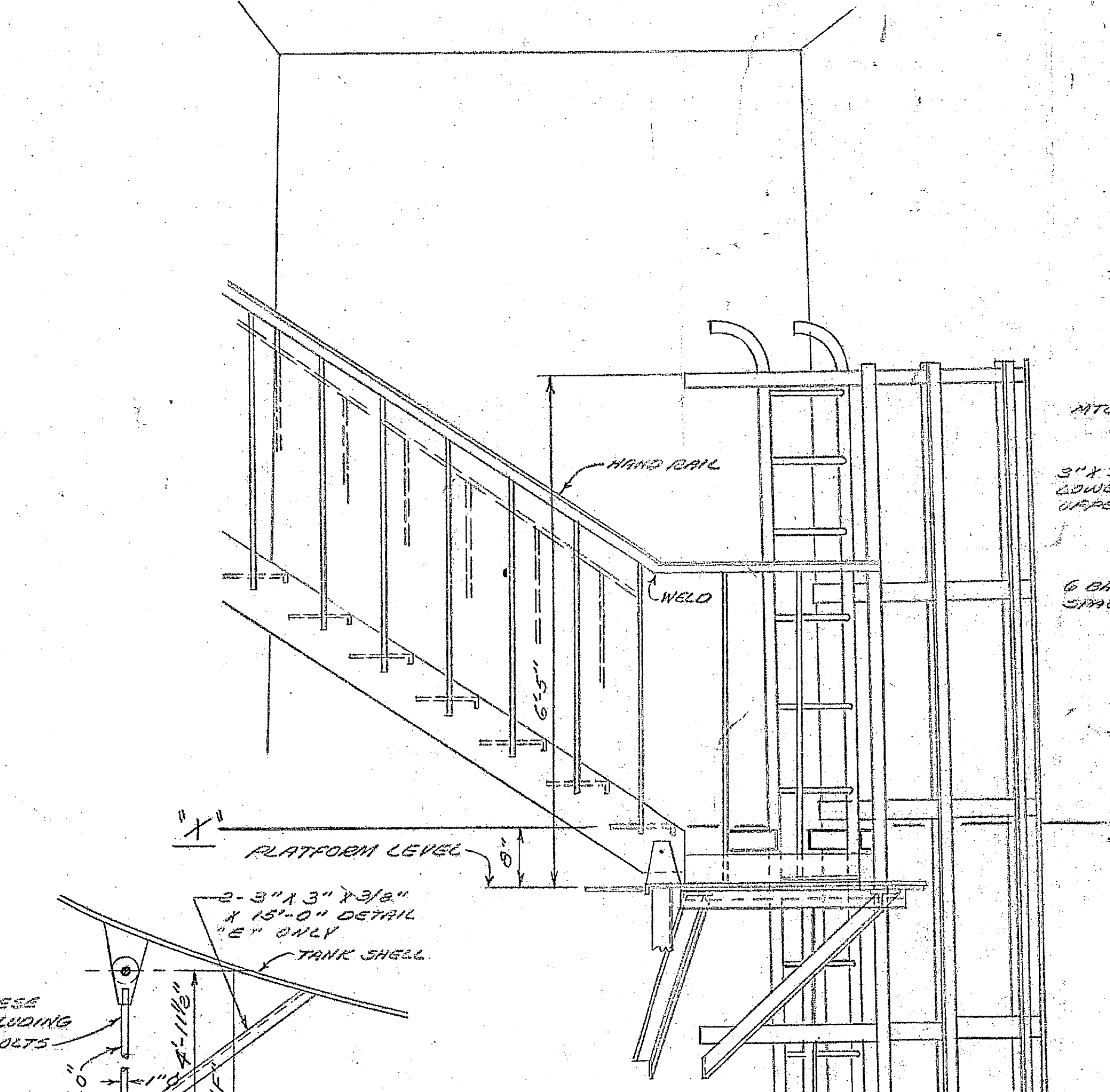
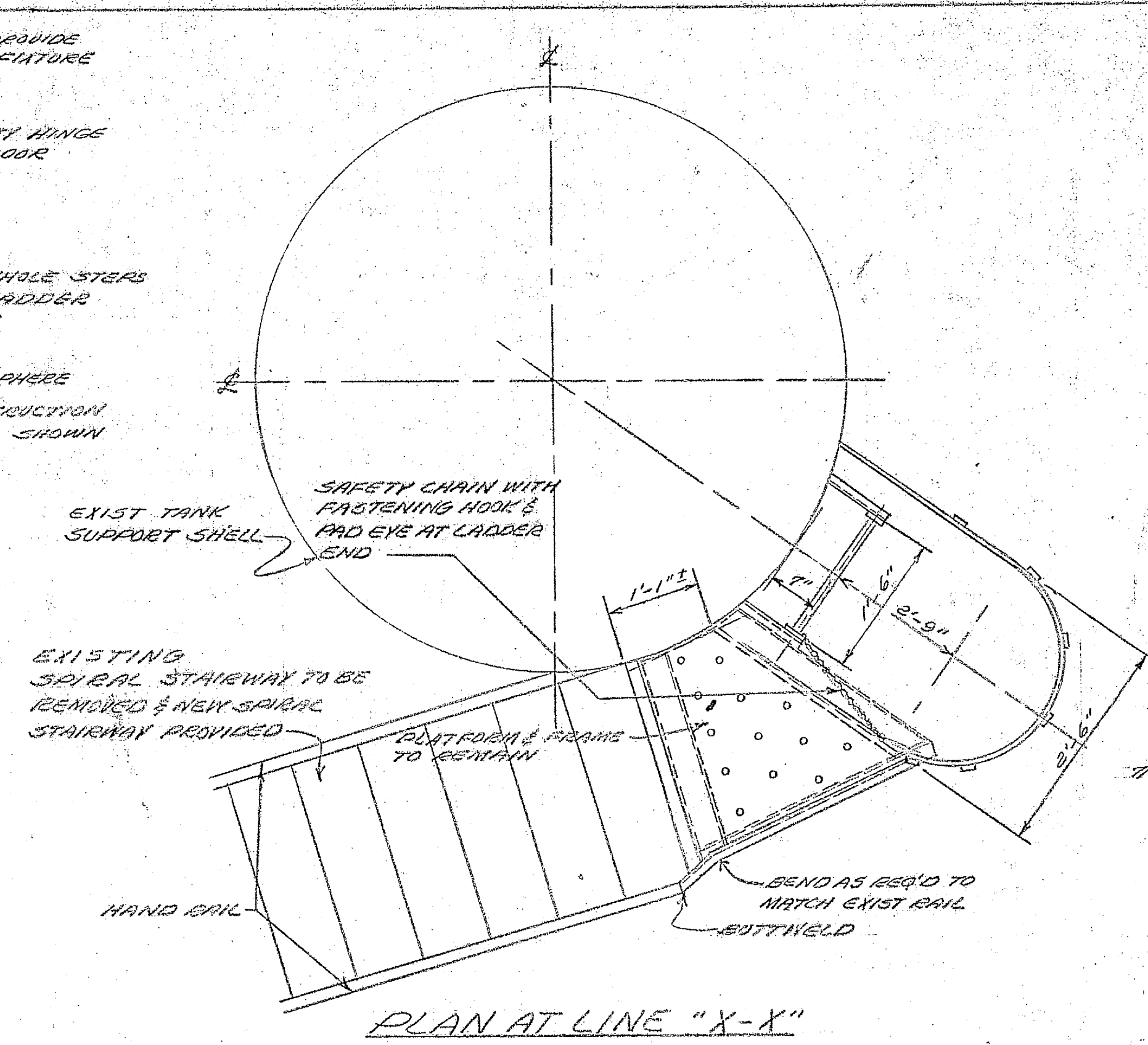
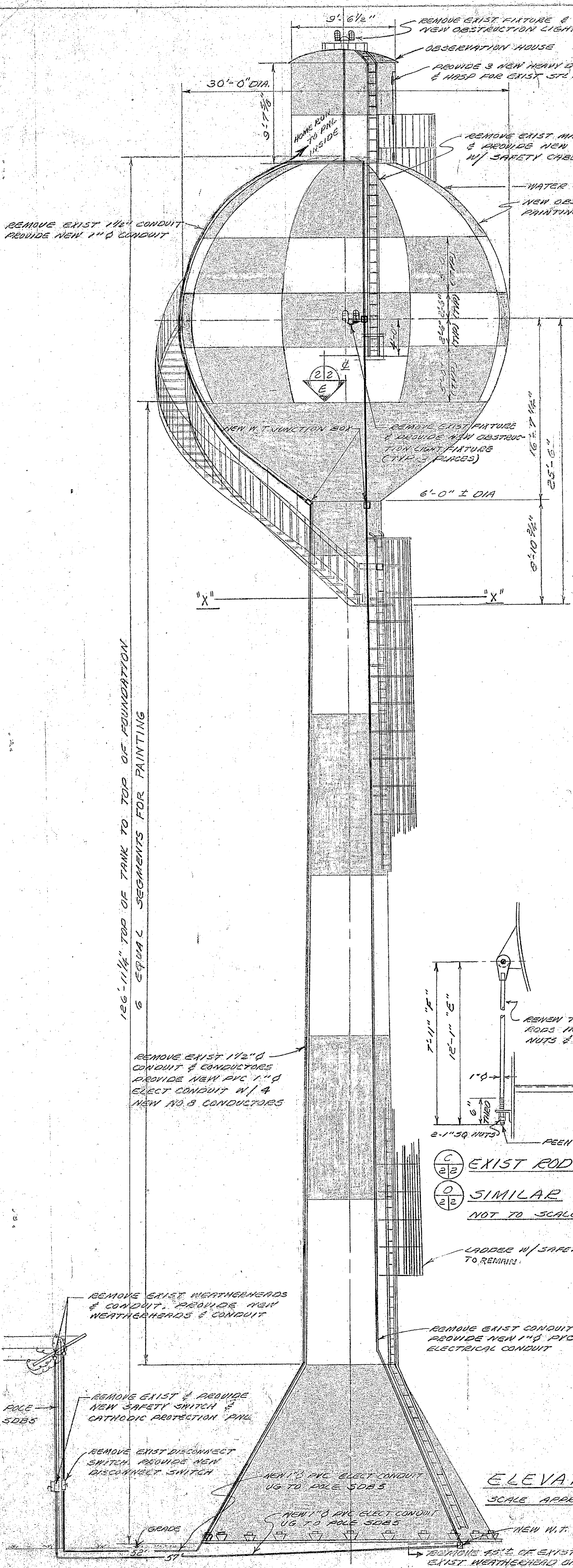
[Signature]

DATE: June 2, 1973

DEPARTMENT OF THE NAVY NAVAL FACILITIES ENGINEERING COMMAND ATLANTIC DIVISION NORFOLK, VIRGINIA		NAVAL STATION MARINE COMPS BASE, CAMP LEJEUNE, N.C.
PROJECT TITLE: REPAIR AND PAINT WATER TANK AND TRAINING TOWER DRAWING NO.: 80091		
COMMANDING GENERAL: RVD 4011867	SIZE: 11" x 17" CDDE IDENT NO: F 80091	NAVFAC DRAWING NO: 4011867
APPROVED: [Signature] FOR COMMANDER, NAVFAC	DATE: June 2, 1973	CONSTR CONTR NO: N62670-75-B-0923 SCALE: GRAPHIC SPEC NO: 05-75-0923 SHEET 2 OF 2 LANTDIV DWG NO.

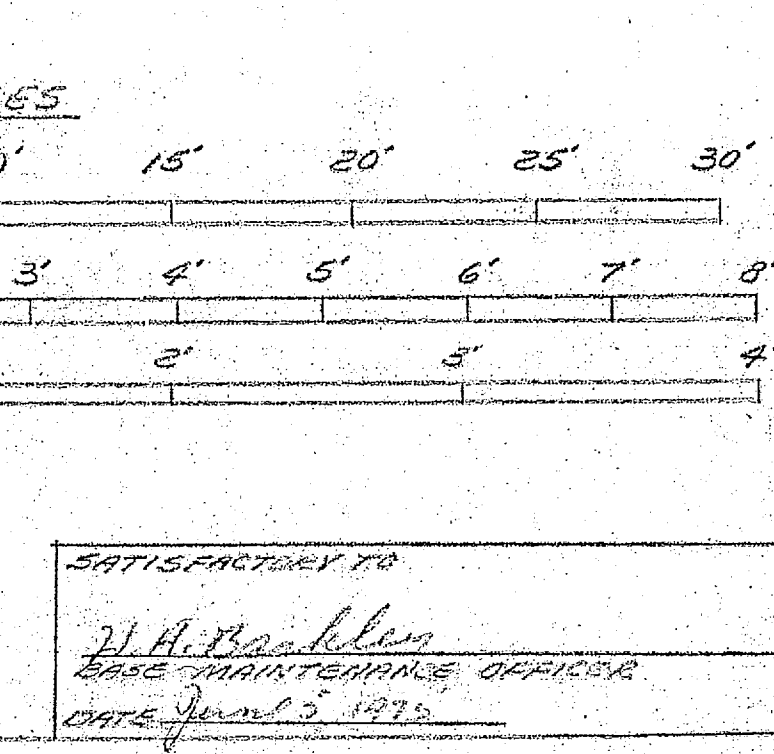
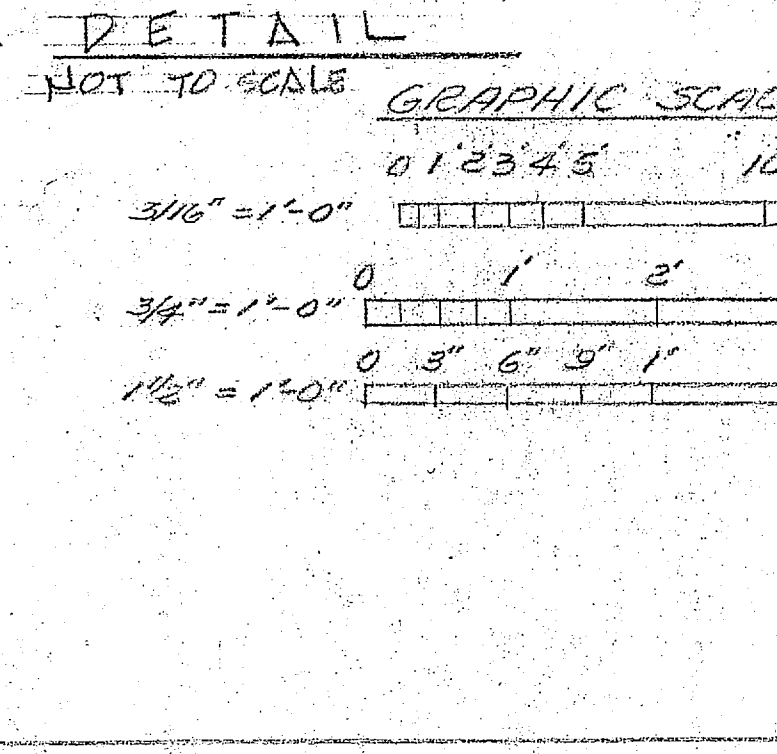
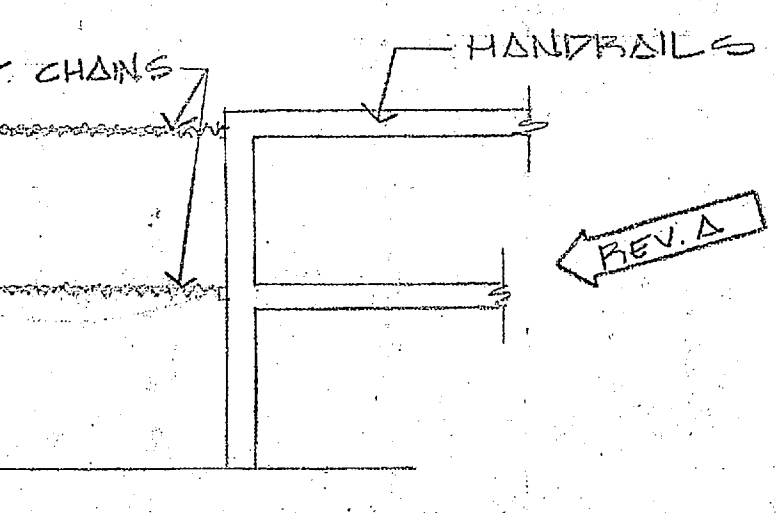


REVISIONS			
SYM	DESCRIPTION	DATE	APPROVED
A	ADDED DETAIL, NOTES AND GUARDRAIL	6/1/72	[Signature]



GENERAL NOTES

1. DIMENSIONS OF ORIGINAL STRUCTURE OBTAINED FROM SHOP DRAWINGS. VERIFY IN FIELD AS REQUIRED.
2. EXIST SPIRAL STAIRWAY ON WATER TOWER & LADDER ON TRAINING TOWER ARE BOTH UNSAFE DUE TO DETERIORATION.
3. WATERWAYS SHALL BE "OBSTRUCTION PAINTED" ALTERNATING THE INTERNATIONAL ORANGE & WHITE SEGMENTS AS SHOWN. PAINT LADDER & SPIRAL STAIRWAY SAME AS ADJACENT SURFACES.
4. SHALL BE AT 30% SBA-108.



LEGEND

[Orange Box]	PAINT INTERNATIONAL ORANGE
[White Box]	PAINT WHITE

PUBLIC WORKS DEPT. MARINE CORPS BASE CAMP LEJEUNE, N.C.		DEPARTMENT OF THE NAVY NAVAL FACILITIES ENGINEERING COMMAND ATLANTIC DIVISION NAVAL STATION NORFOLK, VIRGINIA	
DESIGNED BY: [Signature]		DRAWN BY: [Signature]	
CHECKED BY: [Signature]		DATE: 6/1/72	
APPROVED BY: [Signature]		PUBLIC WORKS OFFICER	
SATISFACTORY TO: [Signature]		DATE: 6/1/72	
COMMANDING GENERAL		NAVFAC DRAWING NO. 401186	
EFD RVD		SIZE CODE IDENT NO. F 80091	
APPROVED BY: [Signature]		CONSTR. CONTR. NO. NR2470-75-B-0921	
FOR COMMANDER, NAVFAC		SCALE: Graphical SPEC. No. DS-75-0923 SHEET 2 OF 2	

SATISFACTORY TO
[Signature]
DATE: June 5, 1972

