

DATE OF INSPECTION  
**13 MAY 1987**

TYPE OF INSPECTION  
 A  INTERNAL & EXTERNAL B  INTERNAL & EXTERNAL WITH PRESSURE TEST C  OPERATIONAL

1. FROM **BASE MAINT. OFFICER  
 CAMP. LEJEUNE, N. C.**  
 2. TO **NAVFACENGCOM  
 NORFOLK, VA**

14. CERTIFICATE ISSUED  YES  NO  
 EXPIRE **13 MAY 1989**  
 15. BOILER INSPECTOR  
*Thomas L. Lenier*  
 NAVY OR NATIONAL BOARD NO.  
**NAVFAC 239**  
 16. REASON FOR NOT ISSUING CERTIFICATE

BOILER DATA

3. MANUFACTURER  
**INGERSOLL RAND (BUCKEYE BOILER)**

4. PROPERTY NO. <b>PV-181</b>	5. MFG. SERIAL NO. <b>G 7400</b>	6. MFG. MODEL NO. <b>W.B. 710015</b>
7. BUILDING NO. <b>NH-100</b>	8. YEAR BUILT <b>1986</b>	9. CAPACITY <b>17. CU FT. VOL.</b>

10. FUEL (Check)  
 COAL  OIL  GAS

11. PRESSURE  
 DESIGNED **200** psi OPERATING **100** psi TEST **300** psi

12. FEED WATER TREATMENT  
 SATISFACTORY  UNSATISFACTORY

13. TYPE  
 WATER TUBE  FIRE TUBE  C. I.

17. BOILER USE  
**AIR-RECEIVER**

18. COMBUSTION CONTROL (Mfg. Name)

19. COMBUSTION  
 \_\_\_\_\_ % CO<sub>2</sub> \_\_\_\_\_ % EXCESS O<sub>2</sub>

20. FLUE GAS TEMPERATURE  
 AFTER BOILER \_\_\_\_\_ °F : AFTER HEAT TRAP \_\_\_\_\_ °F

SAFETY DEVICES  
 SAFETY VALVES

21. MANUFACTURER  
**EATON**

22. NUMBER AND SIZE <b>1-1/4"</b>	23. PSI SETTING <b>200</b>	24. CONDITION <b>SAT.</b>
--------------------------------------	-------------------------------	------------------------------

25. MANUFACTURER  
**U.S. GAGE**

26. CORRECTIONS  
 WATER LEG CONSTANT \_\_\_\_\_ psi; OTHER \_\_\_\_\_ psi

27. REASON IF NOT TESTED

FIRING EQUIPMENT

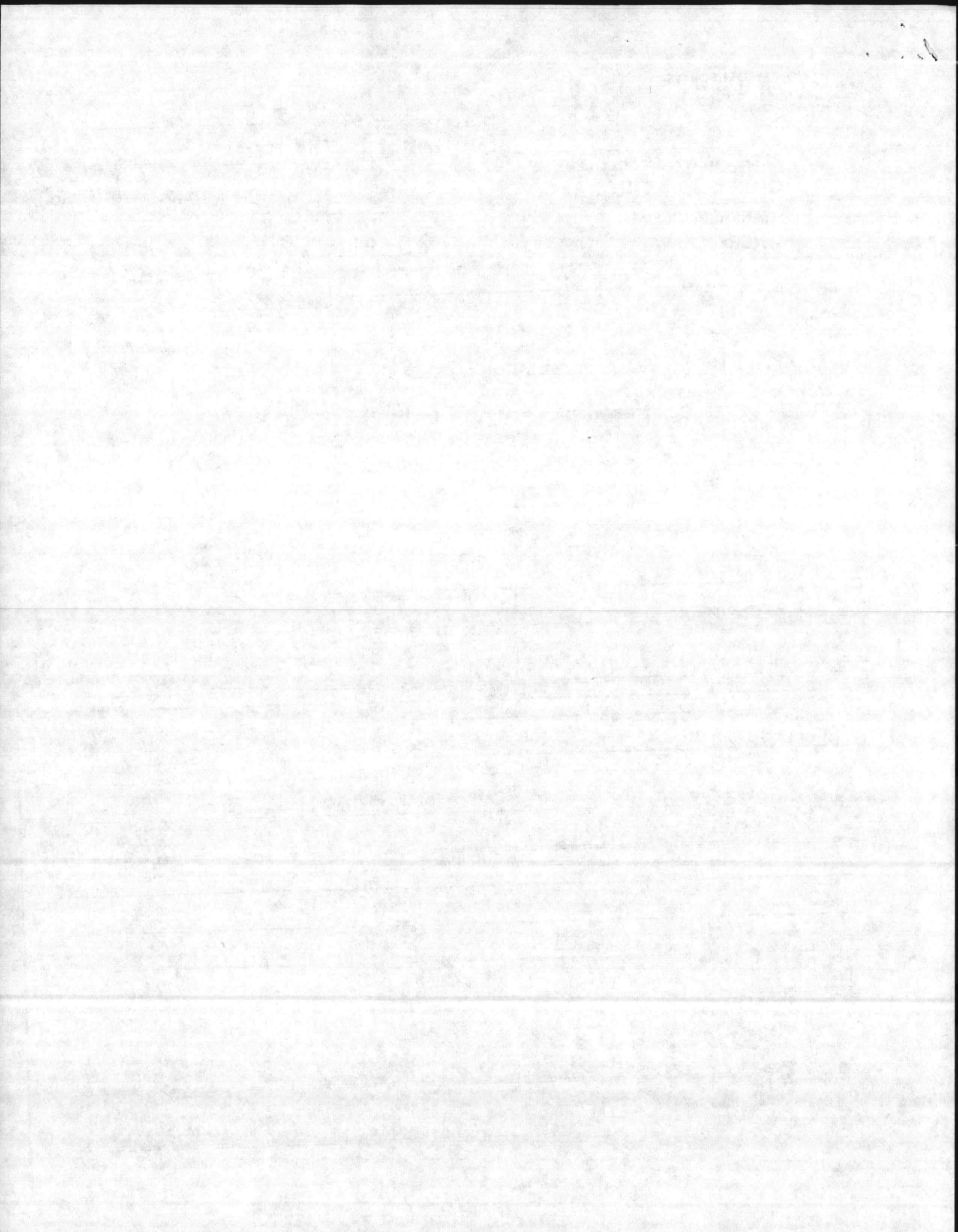
ITEM	IN SERVICE	ALTERNATE
28. MANUFACTURER		
29. TYPE		
30. FUEL GRADE		

31. INSPECTOR'S COMMENTS

**INSTALL BY-PASS AROUND AUTO DRAIN VALVE.**

32. ATTACHMENT(S) (Check)  
 COPY OF INSPECTOR'S REPORT  SPECIAL COMMENTS

33. SIGNATURE  
*Timothy Jewell* **5/18/87**  
 BY DIRECTION



MFGRS. SERIAL NO.

G-7400

MFGRS. MODEL NO.

2-TPTE 16

MANUFACTURER

INGERSOLL RAND (BUCKEYE BOILER)

DATE OF SHEET

10 SEPT. 1986

TYPE OF SUPERHEATER

FURNACE VOLUME

17 CU. FT.

OPERATION

- AUTOMATIC
- SEMI-AUTOMATIC
- MANUAL

USE

- EXPORT
- ELEC. POWER GENERATION
- LAID UP - WET
- LAID UP - DRY

DATE BUILT

1986

DATE INSTALLED

1986

TEMPERATURE AT SUPERHEATER OUTLET

BOILER \_\_\_\_\_

WATER WALL \_\_\_\_\_

ECONOMIZER \_\_\_\_\_

SUPERHEATER \_\_\_\_\_

NORMAL FEEDWATER TEMPERATURE

DRUMS

NO. \_\_\_\_\_

DIAMETER \_\_\_\_\_ IN.

LENGTH \_\_\_\_\_ FT. \_\_\_\_\_ IN.

- RIVETED
- FORGE WELDED
- FUSION WELDED

PRESSURE (psig)

200 DESIGN

100 MAWP  
INSTALLED WP

AIR HEATER

- NONE
- TUBULAR
- REGENERATIVE
- STEAM

CAPACITY

- \_\_\_\_\_ HP
- \_\_\_\_\_ LB./HR
- \_\_\_\_\_ EDR
- \_\_\_\_\_ BTU/HR.

BOILER

TYPE

- C.I.
- WATER TUBE
- FIRE TUBE

DRAFT

- NATURAL
- FORCED
- INDUCED

PRODUCES

- STEAM
- LOW TEMP. WATER
- HIGH TEMP. WATER

CIRCULATION

- NATURAL
- FORCED

(See Reverse Side for Fittings)

FUEL & FIRING EQUIPMENT IN SERVICE

FUEL

COAL

- ANTHRACITE
- BITUMINOUS

OIL

- COMMERCIAL 1, 2, 4, 5, 6
- NAVY
- OTHER \_\_\_\_\_

GAS

- NATURAL
- MANUFACTURED

ALTERNATE FUEL & FIRING EQUIPMENT

COAL

- ANTHRACITE
- BITUMINOUS

OIL

- COMMERCIAL 1, 2, 4, 5, 6
- NAVY SPECIAL
- OTHER \_\_\_\_\_

GAS

- NATURAL
- MANUFACTURED

FIRING EQUIPMENT

COAL - HAND FIRED

COAL - STOKER

- UNDERFEED - MULTIPLE RETORT
- UNDERFEED - SINGLE RETORT
- SPREADER - DUMP GRATE
- SPREADER - VIBRATING GRATE
- SPREADER - TRAVELING GRATE
- CHAIN GRATE

GAS

- GAS RING
- VENTURI TYPE

COAL - PULVERIZER

- ATTRITION
- BALL & RACE
- BOWL MILL
- TUBULAR

OIL BURNERS

- MECHANICAL
- STEAM ATOMIZED
- AIR ATOMIZED
- ROTARY CUP

COAL - HAND FIRED

COAL - STOKER

- UNDERFEED - MULTIPLE RETORT
- UNDERFEED - SINGLE RETORT
- SPREADER - DUMP GRATE
- SPREADER - VIBRATING GRATE
- SPREADER - TRAVELING GRATE
- CHAIN GRATE

GAS

- GAS RING
- VENTURI TYPE

COAL - PULVERIZER

- ATTRITION
- BALL & RACE
- BOWL MILL
- TUBULAR

OIL BURNERS

- MECHANICAL
- STEAM ATOMIZED
- AIR ATOMIZED
- ROTARY CUP

FIRING EQUIPMENT MANUFACTURER

PROPERTY NO.

PV-181

BUILDING OR LOCATION

NH-100

BOILER

ACTIVITY

NAVAL HOSPITAL

112 D 21

DATA RECORD SHEET - BOILERS  
NAVY FAC 9-11014/40 (9-69) Supersedes NAVDOCKS 2509  
S/N 0105-003-7010

FITTING	NUMBER	SIZE	MANUFACTURER	TYPE	SETTING	RANGE	PRESSURE CLASS
SAFETY VALVES	1	1/4"	EKTON		200	CAP. 183 CFM	
STEAM OUTLET VALVES							
BLOW-OFF VALVES							
FEEDWATER VALVES							
WATER COLUMN							
FEEDWATER REGULATOR							
WATER GAGES							
STEAM GAGES	1	2"	USG			0-300	
SOOT BLOWERS							
FUSIBLE PLUGS							

LOCATION

BLDG. NO.

REC. NO.

DATE

10H-100

PV-181

10 SEPT 86

MANUFACTURED BY:

(INGERSOLL RAND)

BUCKEYE BOLLEN

MFR. SER. NO. G-7400

MFR. MODEL NO. 2-TPTE16

NATL. BRD. NO. 710015

YEAR. BLT. 84

DSG. PRESS. 200

OPER. PRESS. 100

MAX. TEMP. 450

TYPE

CAP. 17 cu ft.

OVER ALL LGTH. 66"

DIA. 24"

SHELL THK. .187

HEAD THK. .188

WATER GAL.

PRESS. GAGE

USG

PRESS. RANGE

0-300

SIZE

2"

SV MFR.

EATON

SIZE

1/4"

CAP.

CFM 183

10.1 TANK

SET 200

OPEN 200

CLOSE 130

10.2 COMP #1

SET EATON 235 CFM 260

OPEN OK

CLOSE SATISFACTORY

10.3 COMP #2

SET EATON 235 CFM 260

OPEN OK

CLOSE SAT.

SPECTION DATE

REMARKS

10 SEPT 86

HYDRO @ 300 PSI - SAT  
ON FIRST TEST PIN HOLE IN 1 1/2" FEET, TOP OF TANK - REPLACED SAME.

13 MAY 87

LOW OIL LEVEL #2 COMP. MANUAL TEST - SATISFACTORY

13 MAY 87

LOW OIL LEVEL #1 COMP. MANUAL TEST - SATISFACTORY

13 MAY 87

TESTED SAFETY VALVES 3 EA - SATISFACTORY  
COMPARED AIR PRESS GAGE WITH TEST GAGE - GOOD

13 MAY 87

1. INSTALL BY-PASS AROUND DRAIN TRAP. OR SEPERATE DRAIN VALVE W/ GATE VALVE AT LEAST 200 WOG

ISSUED CERT TO EXPIRE 13 MAY 1989

