

DATE OF INSPECTION
 22 APR. - 25 NOV. 1981

TYPE OF INSPECTION
 A INTERNAL & EXTERNAL B INTERNAL & EXTERNAL WITH PRESSURE TEST C OPERATIONAL

1. FROM BASE MAINT. OFFICER
 CAMP. LEJEUNE, N. C.
 2. TO NAVFACENGCOM
 NORFOLK, VA

14. CERTIFICATE ISSUED YES NO
 EXPIRES 22 APR. 1982
 15. BOILER INSPECTOR

Thomas L. Lavin
 NAVY OR NATIONAL BOARD NO.

BOILER DATA

3. MANUFACTURER
H. B. SMITH
 4. PROPERTY NO. *78* 5. MFG. SERIAL NO. *NA* 6. MFG. MODEL NO. *3506*
 7. BUILDING NO. *TT-60* 8. YEAR BUILT *1967* 9. CAPACITY *2,800,000 BTU/HR*
 10. FUEL (Check) COAL OIL GAS 11. PRESSURE
 DESIGNED *40* psi OPERATING *12* psi TEST *60* psi
 12. FEED WATER TREATMENT SATISFACTORY UNSATISFACTORY 13. TYPE
 WATER TUBE FIRE TUBE C. I.

NAVFAC 239
 16. REASON FOR NOT ISSUING CERTIFICATE

17. BOILER USE
HEATING
 19. COMBUSTION
11 % CO₂ _____ % EXCESS O₂

18. COMBUSTION CONTROL (Mfg. Name)
HOWEYWELL
 20. FLUE GAS TEMPERATURE
 AFTER BOILER *500* °F ; AFTER HEAT TRAP _____ °F

SAFETY DEVICES
 SAFETY VALVES

21. MANUFACTURER *Mc DONNELL MILLER* 22. NUMBER AND SIZE *2-1 1/2"* 23. PSI SETTING *40* 24. CONDITION *GOOD*

STEAM PRESSURE GAUGE

25. MANUFACTURER *MARSH* 26. CORRECTIONS
 WATER LEG CONSTANT _____ psi; OTHER _____ psi
 27. REASON IF NOT TESTED

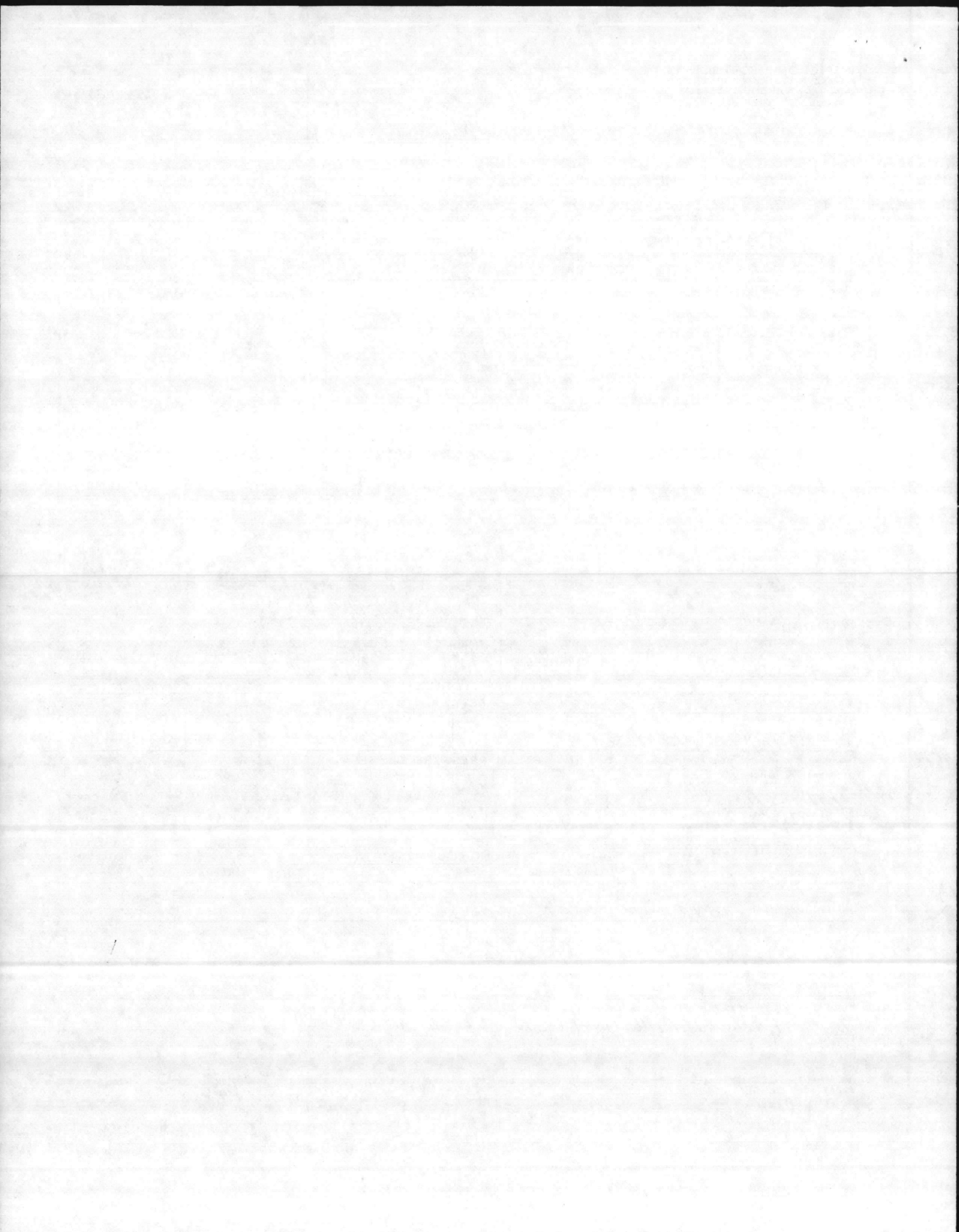
FIRING EQUIPMENT

ITEM	IN SERVICE	ALTERNATE
28. MANUFACTURER	<i>SIEMON MFG. CO</i>	
29. TYPE	<i>NOZZLE SPRAY</i>	
30. FUEL GRADE	<i>#2</i>	

31. INSPECTOR'S COMMENTS
 ① INSTALL DRAIN LINE ON LWCO

32. ATTACHMENT(S) (Check)
 COPY OF INSPECTOR'S REPORT SPECIAL COMMENTS

33. SIGNATURE
R.M. Wilson
 BY DIRECTION



DATE OF INSPECTION
 22 APR. - 25 NOV. 1981

TYPE OF INSPECTION
 A INTERNAL & EXTERNAL B INTERNAL & EXTERNAL WITH PRESSURE TEST C OPERATIONAL

1. FROM **BASE MAINT. OFFICER
 CAMP. LEJEUNE, N. C.**
 2. TO **NAVFADENCOM
 NORFOLK, VA**

14. CERTIFICATE ISSUED YES NO
 EXPIRES **22 APR. 1982**
 15. BOILER INSPECTOR
Thomas L. Lanier
 NAVY OR NATIONAL BOARD NO.
NAVFAC 239

BOILER DATA
 3. MANUFACTURER
H. B. SMITH
 4. PROPERTY NO. **78** 5. MFG. SERIAL NO. **NA** 6. MFG. MODEL NO. **3506**
 7. BUILDING NO. **TT-60** 8. YEAR BUILT **1967** 9. CAPACITY **2,800,000 BTU/HR**
 10. FUEL (Check) COAL OIL GAS 11. PRESSURE
 DESIGNED **40** psi OPERATING **12** psi TEST **60** psi
 12. FEED WATER TREATMENT SATISFACTORY UNSATISFACTORY 13. TYPE
 WATER TUBE FIRE TUBE C. I.

16. REASON FOR NOT ISSUING CERTIFICATE

17. BOILER USE
HEATING
 19. COMBUSTION
11.1 % CO₂ _____ % EXCESS O₂

18. COMBUSTION CONTROL (Mfg. Name)
HONEYWELL
 20. FLUE GAS TEMPERATURE
 AFTER BOILER **500** °F : AFTER HEAT TRAP _____ °F

**SAFETY DEVICES
 SAFETY VALVES**

21. MANUFACTURER **Mc DONNELL MILLER** 22. NUMBER AND SIZE **2-1 1/2"** 23. PSI SETTING **40** 24. CONDITION **GOOD**

STEAM PRESSURE GAUGE

25. MANUFACTURER **MARSH** 26. CORRECTIONS
 WATER LEG CONSTANT _____ psi; OTHER _____ psi
 27. REASON IF NOT TESTED

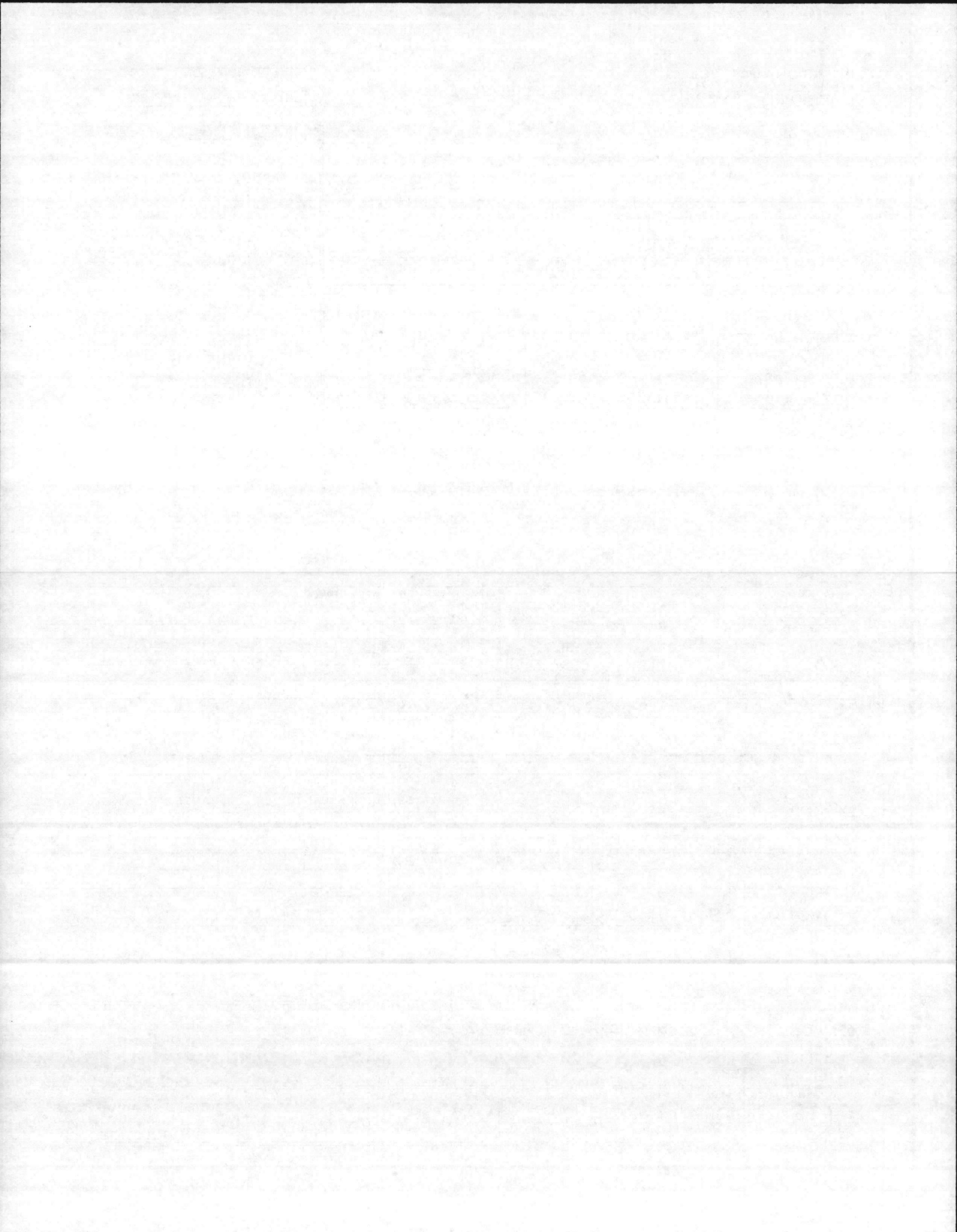
FIRING EQUIPMENT

ITEM	IN SERVICE	ALTERNATE
28. MANUFACTURER	SIEMON MFG. CO	
29. TYPE	NOZZLE SPRAY	
30. FUEL GRADE	#2	

31. INSPECTOR'S COMMENTS
① INSTALL DRAIN LINE ON LWCO

32. ATTACHMENT(S) (Check)
 COPY OF INSPECTOR'S REPORT SPECIAL COMMENTS

33. SIGNATURE
R.M. Wilson
 BY DIRECTION



INSPECTION REPORT-BOILERS
 NAVFAC 9-11014/41 (3/67)
 Supersedes NAVDOCKS 2544
 S/N 0105-LF-004-0000

DATE OF INSPECTION
 2 NOV 1978

TYPE OF INSPECTION
 A INTERNAL & EXTERNAL B INTERNAL & EXTERNAL WITH PRESSURE TEST C OPERATIONAL

1. FROM
 BASE MAINT. OFFICER CAMP LEJEUNE N.C.

14. CERTIFICATE ISSUED YES NO
 EXPIRES 26 JUNE 1979

2. TO
 COMMANDANT Hdqtrs MARINE CORPS (CODE AFF)

15. BOILER INSPECTOR
 Jesse L. Sellers
 NAVY OR NATIONAL BOARD NO.

BOILER DATA

3. MANUFACTURER
 H.B. SMITH

16. REASON FOR NOT ISSUING CERTIFICATE
 NAVFAC 2.25

4. PROPERTY NO. 78
 5. MFG. SERIAL NO. NA
 6. MFG. MODEL NO. 3506

7. BUILDING NO. TT-60
 8. YEAR BUILT 1967
 9. CAPACITY 2,800,000 BTU/HR

10. FUEL (Check) COAL OIL GAS
 11. PRESSURE DESIGNED 40 psi OPERATING 12 psi TEST — psi

12. FEED WATER TREATMENT SATISFACTORY UNSATISFACTORY
 13. TYPE WATER TUBE FIRE TUBE C. I.

17. BOILER USE
 HEATING

18. COMBUSTION CONTROL (Mfg. Name)
 HONEYWELL

19. COMBUSTION
 11.0 % CO₂ % EXCESS O₂

20. FLUE GAS TEMPERATURE
 AFTER BOILER 540 °F ; AFTER HEAT TRAP °F

SAFETY DEVICES

SAFETY VALVES

21. MANUFACTURER
 McDONNELL MILLER
 22. NUMBER AND SIZE 2-1 1/2"
 23. PSI SETTING 40
 24. CONDITION Good

STEAM PRESSURE GAUGE

25. MANUFACTURER
 MARSH
 26. CORRECTIONS
 WATER LEG CONSTANT _____ psi; OTHER _____ psi

27. REASON IF NOT TESTED

FIRING EQUIPMENT

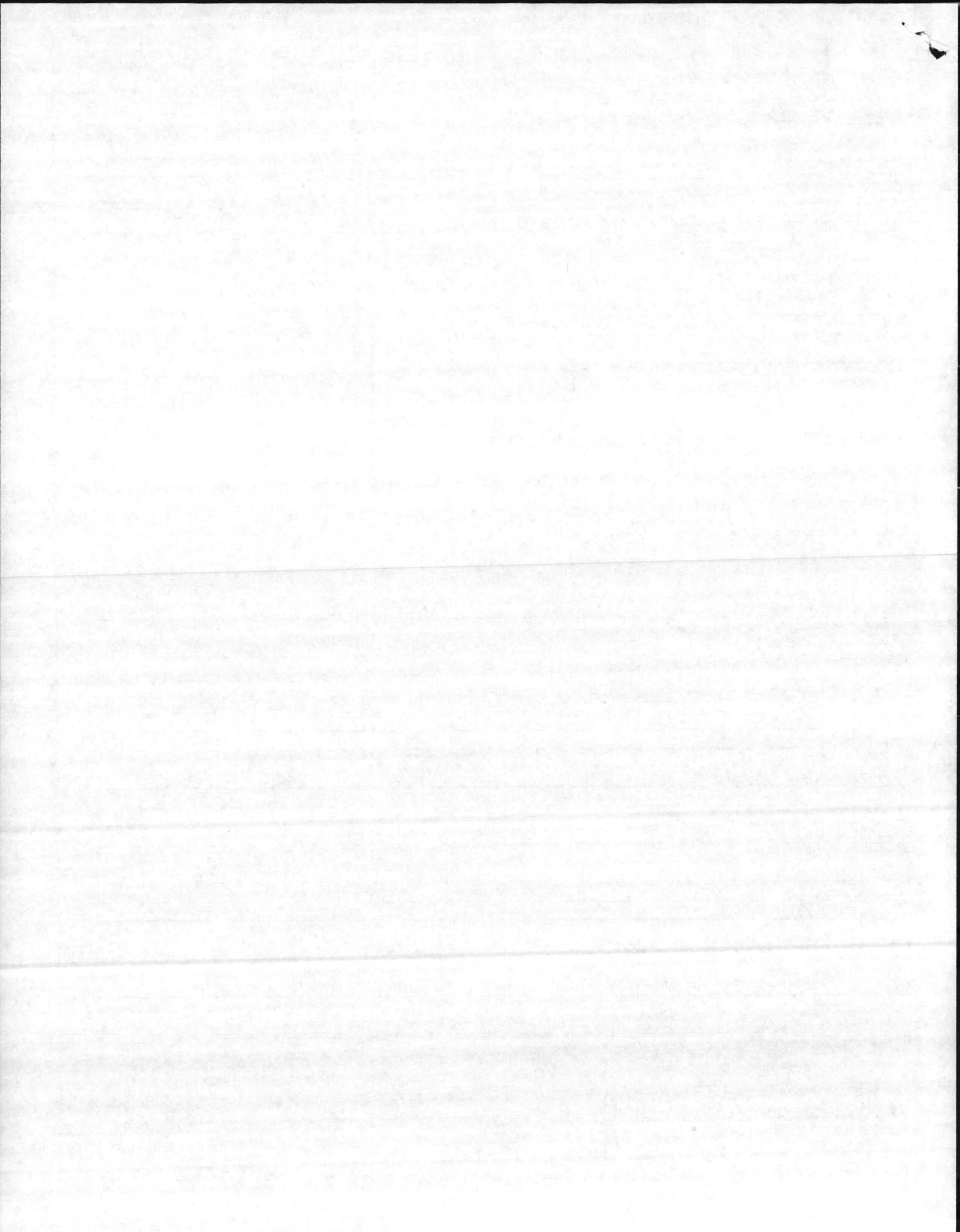
ITEM	IN SERVICE	ALTERNATE
28. MANUFACTURER	SIEMON MFG. CO.	NONE
29. TYPE	NOZZLE SPRAY	
30. FUEL GRADE	#2	

31. INSPECTOR'S COMMENTS

REPAIR HOLE IN REAR BOILER CASING -

32. ATTACHMENT(S) (Check)
 COPY OF INSPECTOR'S REPORT SPECIAL COMMENTS

33. SIGNATURE
 R.M. Killon
 BY DIRECTION



INSPECTION REPORT-BOILERS
 NAVFAC 9-11014/41 (3/67)
 Supersedes NAVDOCKS 2544
 S/N 0105-LF-004-0000

DATE OF INSPECTION

26 JUNE 1978

TYPE OF INSPECTION

A INTERNAL & EXTERNAL B INTERNAL & EXTERNAL WITH PRESSURE TEST C OPERATIONAL

1. FROM
 BASE MAINT OFFICER CAMP LEJEUNE N.C.

2. TO
 Commandant Hdqtrs MARINE CORPS (CODE LFF)

BOILER DATA

3. MANUFACTURER
 H. B. Smith

4. PROPERTY NO. 78 5. MFG. SERIAL NO. 6. MFG. MODEL NO. 3500

7. BUILDING NO. TT 60 8. YEAR BUILT 1967 9. CAPACITY 2,800,000 BTU/HR

10. FUEL (Check) COAL OIL GAS 11. PRESSURE DESIGNED 40 psi OPERATING 12 psi TEST 60 psi

12. FEED WATER TREATMENT SATISFACTORY UNSATISFACTORY 13. TYPE WATER TUBE FIRE TUBE C. I.

14. CERTIFICATE ISSUED YES NO
 20 JAN 1979 EXPIRES

15. BOILER INSPECTOR
 Jesse J. Sellen
 NAVY OR NATIONAL BOARD NO.

NAUFAC 225
 16. REASON FOR NOT ISSUING CERTIFICATE

17. BOILER USE HEATING 18. COMBUSTION CONTROL (Mfg. Name) HONEYWELL

19. COMBUSTION 20. FLUE GAS TEMPERATURE

% CO₂ % EXCESS O₂ AFTER BOILER °F : AFTER HEAT TRAP °F

SAFETY DEVICES
 SAFETY VALVES

21. MANUFACTURER Mc-Donnell Miller 22. NUMBER AND SIZE 2 - 1 1/2" 23. PSI SETTING 40 24. CONDITION

STEAM PRESSURE GAUGE

25. MANUFACTURER MARSH 26. CORRECTIONS WATER LEG CONSTANT _____ psi; OTHER _____ psi

27. REASON IF NOT TESTED

FIRING EQUIPMENT

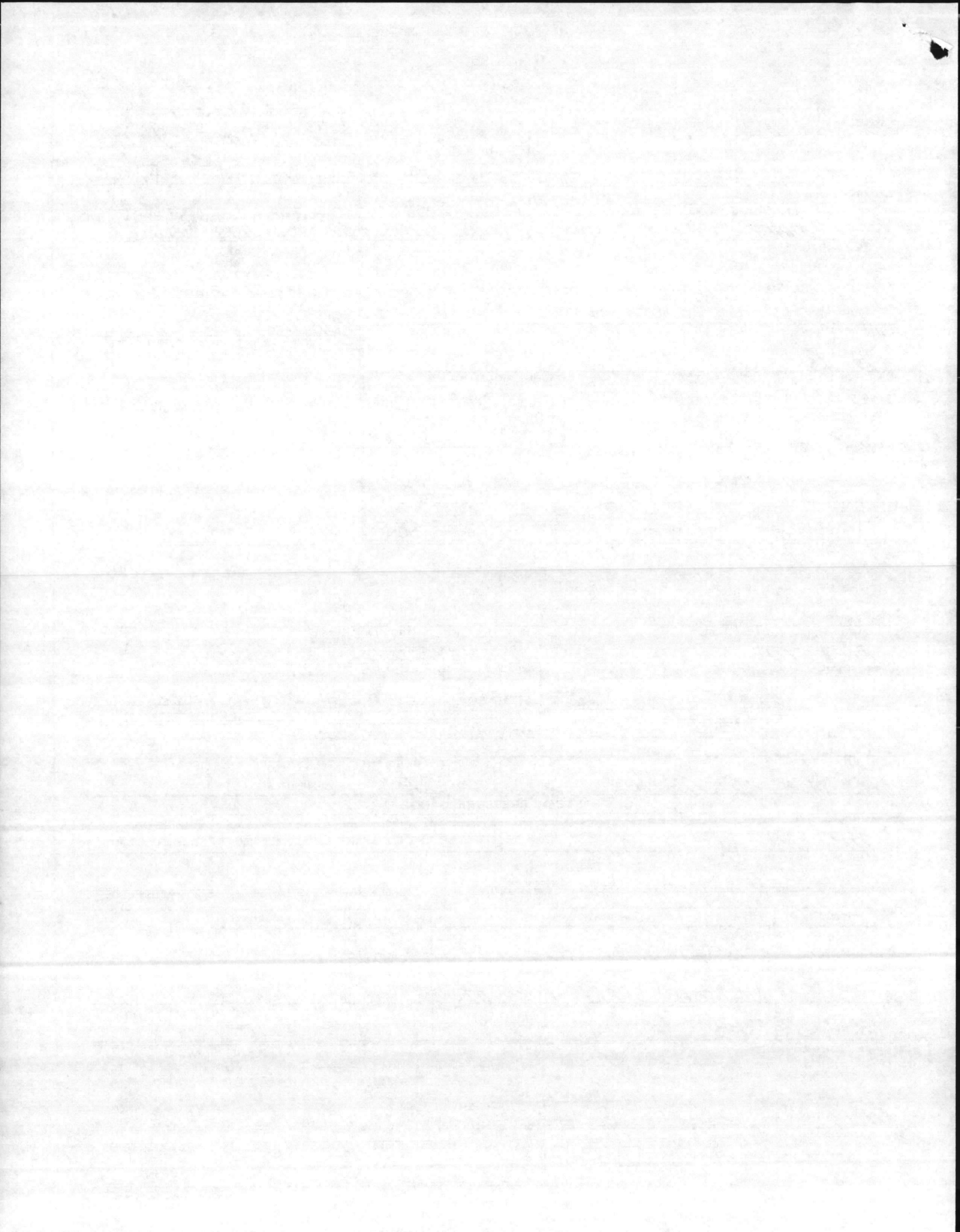
ITEM	IN SERVICE	ALTERNATE
28. MANUFACTURER	SIEMON MFG CO.	NONE
29. TYPE	NOZZLE SPRAY PRESS ATOM	
30. FUEL GRADE	#2	

31. INSPECTOR'S COMMENTS

OK.

32. ATTACHMENT(S) (Check)
 COPY OF INSPECTOR'S REPORT SPECIAL COMMENTS

33. SIGNATURE R.M. Sellen
 BY DIRECTION



INSPECTION REPORT-BOILERS
 NAVFAC 9-11014/41 (3/67)
 Supersedes NAVDOCKS 2544
 S/N 0105-LF-004-0000

DATE OF INSPECTION
 12-2-76

TYPE OF INSPECTION
 A INTERNAL & EXTERNAL B INTERNAL & EXTERNAL WITH PRESSURE TEST C OPERATIONAL

1. FROM
 Base Maint Officer Camp Lejeune NC.
 2. TO
 Commandant Hydras Marine Corps (Code LFF)

14. CERTIFICATE ISSUED YES NO
 EXPIRES 7-15-77
 15. BOILER INSPECTOR
 E.D. Mobley
 NAVY OR NATIONAL BOARD NO.

BOILER DATA

3. MANUFACTURER
 H.B. Smith

4. PROPERTY NO. 78
 5. MFG. SERIAL NO. -
 6. MFG. MODEL NO. 3500

7. BUILDING NO. T60
 8. YEAR BUILT 1967
 9. CAPACITY 2,800,000 BTU/HR

10. FUEL (Check)
 COAL OIL GAS

11. PRESSURE
 DESIGNED 40 psi OPERATING 12 psi TEST - psi

12. FEED WATER TREATMENT
 SATISFACTORY UNSATISFACTORY

13. TYPE
 WATER TUBE FIRE TUBE C. I.

NAV FAC 101
 16. REASON FOR NOT ISSUING CERTIFICATE

17. BOILER USE Heating
 18. COMBUSTION CONTROL (Mfg. Name) Honeywell

19. COMBUSTION 9.5 % CO₂ % EXCESS O₂
 20. FLUE GAS TEMPERATURE
 AFTER BOILER 450 °F ; AFTER HEAT TRAP °F

**SAFETY DEVICES
 SAFETY VALVES**

21. MANUFACTURER Mc Donnell Miller
 22. NUMBER AND SIZE 2-1/2"
 23. PSI SETTING 40
 24. CONDITION Good

STEAM PRESSURE GAUGE

25. MANUFACTURER Marsh
 26. CORRECTIONS
 WATER LEG CONSTANT psi; OTHER psi

27. REASON IF NOT TESTED

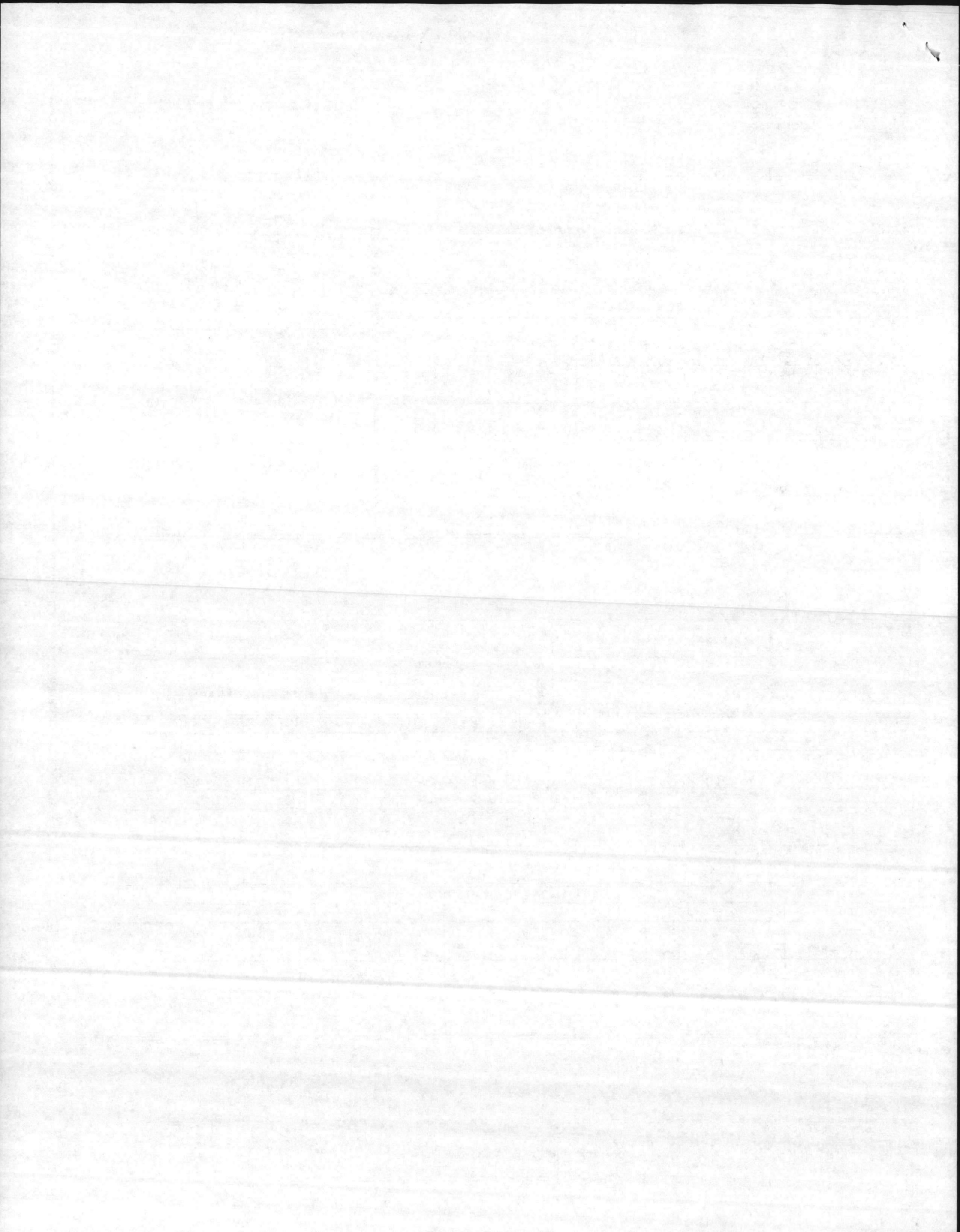
FIRING EQUIPMENT

ITEM	IN SERVICE	ALTERNATE
28. MANUFACTURER	Siemens Mfg. Co.	None
29. TYPE	No. 33/4 Spray - Press Atom.	
30. FUEL GRADE	#2	

31. INSPECTOR'S COMMENTS
 O.K.

32. ATTACHMENT(S) (Check)
 COPY OF INSPECTOR'S REPORT SPECIAL COMMENTS

33. SIGNATURE
 Daniel L. White
 BY DIRECTION



INSPECTION REPORT-BOILERS
 NAVFAC 9-11014/41 (3/67)
 Supersedes NAVDOCKS 2544
 S/N 0105-004-0000

DATE OF INSPECTION

8-19-76

TYPE OF INSPECTION

A INTERNAL & EXTERNAL

B INTERNAL & EXTERNAL WITH PRESSURE TEST

C OPERATIONAL

1. FROM

Base Maint Officer Camp Lejeune NS.

14.

CERTIFICATE ISSUED YES NO

Expires 11-11-76

15. BOILER INSPECTOR

2. TO

Commandant Adgates Marine Corps (Code 477)

E.O. Mobley

NAVY OR NATIONAL BOARD NO.

BOILER DATA

3. MANUFACTURER

H.B. Smith

NAV FAC 101

16. REASON FOR NOT ISSUING CERTIFICATE

4. PROPERTY NO.

78

5. MFG. SERIAL NO.

-

6. MFG. MODEL NO.

3500

7. BUILDING NO.

ATT 60

8. YEAR BUILT

1967

9. CAPACITY

2,800,000 BTU/HR

10. FUEL (Check)

11. PRESSURE

DESIGNED

OPERATING

TEST

COAL OIL GAS

40 psi

12 psi

60 psi

12. FEED WATER TREATMENT

SATISFACTORY

UNSATISFACTORY

13. TYPE

WATER TUBE

FIRE TUBE

C. I.

17. BOILER USE

Heating

18. COMBUSTION CONTROL (Mfg. Name)

Honeywell

19. COMBUSTION

20. FLUE GAS TEMPERATURE

% CO₂

% EXCESS O₂

AFTER BOILER

°F

: AFTER HEAT TRAP

°F

SAFETY DEVICES

SAFETY VALVES

21. MANUFACTURER

McDonnell Miller

22. NUMBER AND SIZE

2-1/2"

23. PSI SETTING

24. CONDITION

STEAM PRESSURE GAUGE

25. MANUFACTURER

Marsh

26. CORRECTIONS

WATER LEG CONSTANT

psi;

OTHER

psi

27. REASON IF NOT TESTED

FIRING EQUIPMENT

ITEM

IN SERVICE

ALTERNATE

28. MANUFACTURER

Power Flame

NONE

29. TYPE

Nozzle spray press atom.

30. FUEL GRADE

#2

31. INSPECTOR'S COMMENTS

OK.

32. ATTACHMENT(S) (Check)

COPY OF INSPECTOR'S REPORT

SPECIAL COMMENTS

33. SIGNATURE

Daniel L. White

BY DIRECTION

