

DATE OF INSPECTION

1 OCT. 16 OCT. 1985

TYPE OF INSPECTION

A  INTERNAL & EXTERNAL

B  INTERNAL & EXTERNAL WITH PRESSURE TEST

C  OPERATIONAL

1. FROM

COMMANDING GENERAL  
 MCB, CAMP LEJEUNE, NC

2. TO

NAVFACENGCOM  
 NORFOLK, VA

14.

CERTIFICATE ISSUED  YES  NO

EXPIRES 1 OCT. 1986

15. BOILER INSPECTOR

*Thomas L. Lowrie*  
 NAVY OR NATIONAL BOARD NO.

NAVFAC 239

16. REASON FOR NOT ISSUING CERTIFICATE

BOILER DATA

3. MANUFACTURER

KEWANEE BOILER CORPORATION

4. PROPERTY NO.

59

5. MFG. SERIAL NO.

659961

6. MFG. MODEL NO.

3R3-KX

7. BUILDING NO.

738

8. YEAR BUILT

1985

9. CAPACITY

468,000 BTU/HR

10. FUEL (Check)

COAL  OIL  GAS

11. PRESSURE

DESIGNED

30

OPERATING

15

TEST

45

psi

psi

psi

12. FEED WATER TREATMENT

SATISFACTORY

UNSATISFACTORY

13. TYPE

WATER TUBE

FIRE TUBE

C. I.

17. BOILER USE

HEATING

18. COMBUSTION CONTROL (Mfg. Name)

HONEYWELL

19. COMBUSTION

10

% CO<sub>2</sub>

% EXCESS O<sub>2</sub>

20. FLUE GAS TEMPERATURE

AFTER BOILER 450 °F ; AFTER HEAT TRAP °F

SAFETY DEVICES

SAFETY VALVES

21. MANUFACTURER

WATTS

22. NUMBER AND SIZE

1-3/4"

23. PSI SETTING

30

24. CONDITION

GOOD

STEAM PRESSURE GAUGE

25. MANUFACTURER

WEISS

26. CORRECTIONS

WATER LEG CONSTANT \_\_\_\_\_ psi; OTHER \_\_\_\_\_ psi

27. REASON IF NOT TESTED

FIRING EQUIPMENT

ITEM	IN SERVICE	ALTERNATE
28. MANUFACTURER	PEABODY GORDON PIATT	
29. TYPE	NOZZLE SPRAY	
30. FUEL GRADE	#2	

31. INSPECTOR'S COMMENTS

NEW BOILER INSTALLED UNDER CONTRACT # 84-7859 AND  
 WILL RETAIN SAME PROPERTY NO. AS OLD UNIT.

32. ATTACHMENT(S) (Check)

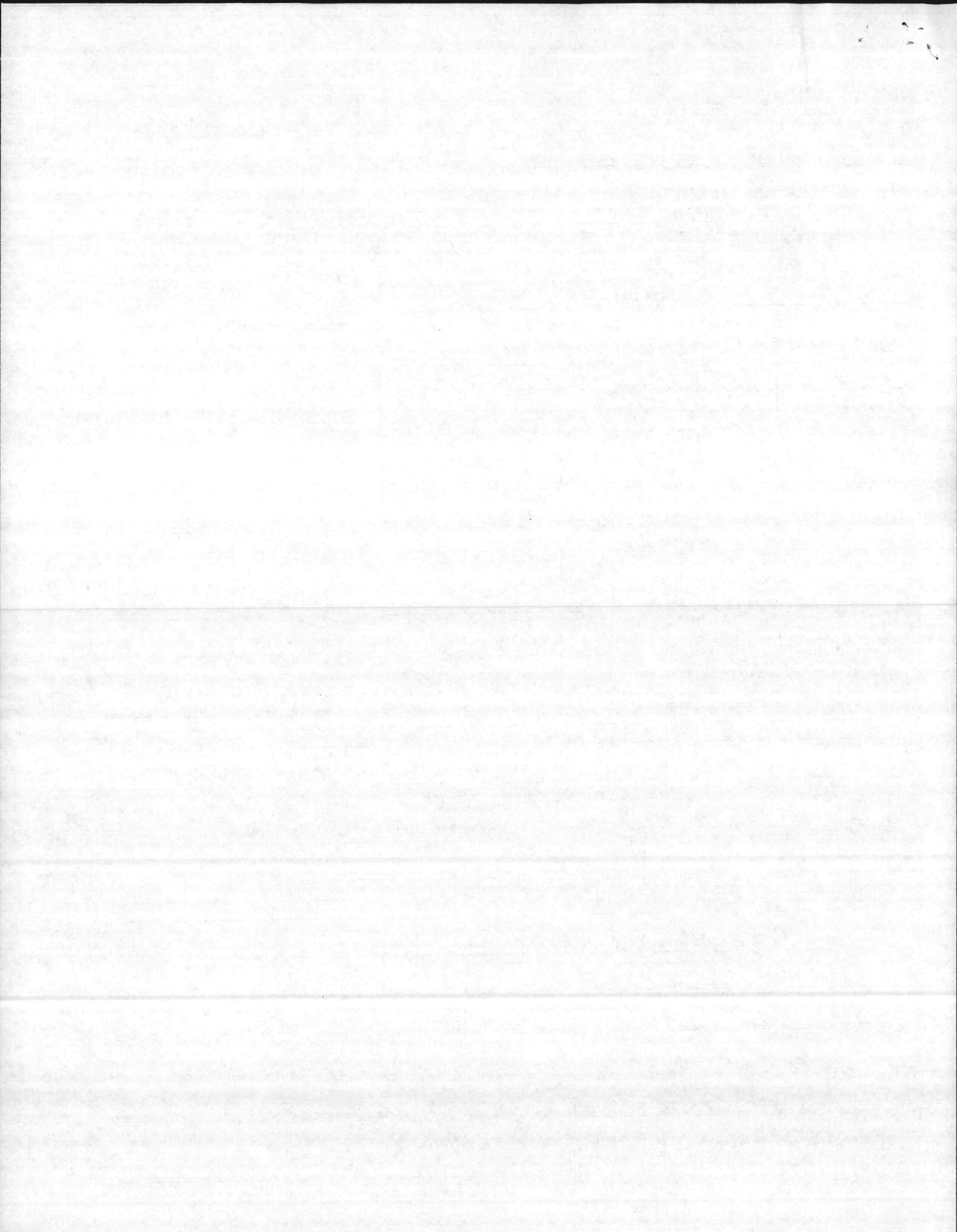
COPY OF INSPECTOR'S REPORT

SPECIAL COMMENTS

33. SIGNATURE

*W M Kuei*

BY DIRECTION



MFGRS. SERIAL NO.  
659961

MFGRS. MODEL NO.  
3R3-KX

MANUFACTURER  
KEWANEE BOILER CORPORATION

DATE OF SHEET  
16 Oct 1985

TYPE OF SUPERHEATER

FURNACE VOLUME  
\_\_\_\_\_ CU. FT.

OPERATION

USE

DATE BUILT

TEMPERATURE AT SUPERHEATER OUTLET  
\_\_\_\_\_ °F

HEATING SURFACE (SQ. FT.)

AUTOMATIC  
 SEMI-AUTOMATIC  
 MANUAL

EXPORT  
 ELEC. POWER GENERATION  
 LAID UP - WET  
 LAID UP - DRY

1985

DATE INSTALLED  
Oct 85

NORMAL FEEDWATER TEMPERATURE  
\_\_\_\_\_ °F

BOILER 75 SQ FT

PRESSURE (psig)

HEATING

BOILER

TYPE

DRAFT

(See Reverse Side for Fittings)

WATER WALL \_\_\_\_\_  
ECONOMIZER \_\_\_\_\_  
SUPERHEATER \_\_\_\_\_

DESIGN \_\_\_\_\_  
MAWP \_\_\_\_\_  
INSTALLED WP \_\_\_\_\_

CAPACITY

C.I.

WATER TUBE

FIRE TUBE

NATURAL

FORCED

INDUCED

DRUMS

NO. \_\_\_\_\_  
DIAMETER \_\_\_\_\_ IN.  
LENGTH \_\_\_\_\_ FT. \_\_\_\_\_ IN.

AIR HEATER

NONE  
 TUBULAR  
 REGENERATIVE  
 STEAM

14 \_\_\_\_\_ HP

\_\_\_\_\_ LB./HR

\_\_\_\_\_ EDR

\_\_\_\_\_ BTU/HR.

PRODUCES

STEAM

LOW TEMP. WATER

HIGH TEMP. WATER

CIRCULATION

NATURAL

FORCED

FUEL & FIRING EQUIPMENT IN SERVICE

ALTERNATE FUEL & FIRING EQUIPMENT

FUEL

COAL

ANTHRACITE  
 BITUMINOUS

OIL

COMMERCIAL 1, 2, 4, 5, 6  
 NAVY  
 OTHER \_\_\_\_\_

GAS

NATURAL  
 MANUFACTURED

COAL

ANTHRACITE  
 BITUMINOUS

OIL

COMMERCIAL 1, 2, 4, 5, 6  
 NAVY SPECIAL  
 OTHER \_\_\_\_\_

GAS

NATURAL  
 MANUFACTURED

FIRING EQUIPMENT

COAL-HAND FIRED

COAL - STOKER

UNDERFEED - MULTIPLE RETORT  
 UNDERFEED - SINGLE RETORT  
 SPREADER - DUMP GRATE  
 SPREADER - VIBRATING GRATE  
 SPREADER - TRAVELING GRATE  
 CHAIN GRATE

GAS

GAS RING  
 VENTURI TYPE

COAL - PULVERIZER

ATTRITION  
 BALL & RACE  
 BOWL MILL  
 TUBULAR

OIL BURNERS

MECHANICAL  
 STEAM ATOMIZED  
 AIR ATOMIZED  
 ROTARY CUP

COAL-HAND FIRED

COAL - STOKER

UNDERFEED - MULTIPLE RETORT  
 UNDERFEED - SINGLE RETORT  
 SPREADER - DUMP GRATE  
 SPREADER - VIBRATING GRATE  
 SPREADER - TRAVELING GRATE  
 CHAIN GRATE

GAS

GAS RING  
 VENTURI TYPE

COAL - PULVERIZER

ATTRITION  
 BALL & RACE  
 BOWL MILL  
 TUBULAR

OIL BURNERS

MECHANICAL  
 STEAM ATOMIZED  
 AIR ATOMIZED  
 ROTARY CUP

FIRING EQUIPMENT MANUFACTURER

PEABODY GORDON PIATT

PROPERTY NO.

59

BUILDING OR LOCATION

738

BOILER

59

ACTIVITY

MCBCL

DATA RECORD SHEET - BOILERS  
MAFAC 9-11014/40 (9-89) Supersedes NAVDOCKS 2509  
S/N 0105-003-7010

FITTING	NUMBER	SIZE	MANUFACTURER	TYPE	SETTING	RANGE	PRESSURE CLASS
SAFETY VALVES	1	3/4	WATTS	MODEL 174A	30		
STEAM OUTLET VALVES	1	2"	STOCKMAN	GATE			125-S
BLOW-OFF VALVES	1	1 1/2"	STOCKMAN	GATE			125-S
FEEDWATER VALVES	1	1/2"	STOCKMAN	GATE			150-S
WATER COLUMN							
FEEDWATER REGULATOR	1	3/4"	TACO		12	10-25	
WATER GAGES							
STEAM GAGES	1	3"	WEISS	ALTITUDE GAGE		0-60 PSI 60-260 F	
SOOT BLOWERS							
FUSIBLE PLUGS							

NAT'L B. 39141

BURNER - MFG PEABODY GORDON PIATT, NOZZLE TIP SIZE 2.50 GPH

COMBUSTION CONTROL - HONEYWELL TYPE R 7795

MFGRS. SERIAL NO.

659961

MFGRS. MODEL NO.

3R3-KX

MANUFACTURER

KEWANEE BOILER CORPORATION

DATE OF SHEET

16 OCT. 85

TYPE OF SUPERHEATER

FURNACE VOLUME

CU. FT.

OPERATION

USE

DATE BUILT

1985

DATE INSTALLED

OCT. 85

TEMPERATURE AT SUPERHEATER OUTLET

HEATING SURFACE (SQ. FT.)

BOILER 75 SQ. FT.

AUTOMATIC  
 SEMI-AUTOMATIC  
 MANUAL

EXPORT  
 ELEC. POWER GENERATION  
 LAID UP - WET  
 LAID UP - DRY  
 HEATING

NORMAL FEEDWATER TEMPERATURE

WATER WALL

ECONOMIZER

SUPERHEATER

PRESSURE (psig)

30 DESIGN

15 MAMP

DESIGN

MAMP

INSTALLED WP

CAPACITY

14 HP

BOILER

TYPE

DRAFT

C.I.

WATER TUBE

FIRE TUBE

NATURAL

FORCED

INDUCED

(See Reverse Side for Fittings)

DRUMS

NO.

DIAMETER IN.

LENGTH FT. IN.

AIR HEATER

NONE  
 TUBULAR  
 REGENERATIVE  
 STEAM

PRODUCES

STEAM

LOW TEMP. WATER

HIGH TEMP. WATER

CIRCULATION

NATURAL

FORCED

FUEL & FIRING EQUIPMENT IN SERVICE

ALTERNATE FUEL & FIRING EQUIPMENT

FUEL

COAL

ANTHRACITE  
 BITUMINOUS

OIL

COMMERCIAL 1, 2, 4, 5, 6  
 NAVY  
 OTHER

GAS

NATURAL  
 MANUFACTURED

COAL

ANTHRACITE  
 BITUMINOUS

OIL

COMMERCIAL 1, 2, 4, 5, 6  
 NAVY SPECIAL  
 OTHER

GAS

NATURAL  
 MANUFACTURED

FIRING EQUIPMENT

COAL - HAND FIRED

COAL - STOKER

UNDERFEED - MULTIPLE RETORT  
 UNDERFEED - SINGLE RETORT  
 SPREADER - DUMP GRATE  
 SPREADER - VIBRATING GRATE  
 SPREADER - TRAVELING GRATE  
 CHAIN GRATE

GAS

GAS RING  
 VENTURI TYPE

COAL - PULVERIZER

ATTRITION  
 BALL & RACE  
 BOWL MILL  
 TUBULAR

OIL BURNERS

MECHANICAL  
 STEAM ATOMIZED  
 AIR ATOMIZED  
 ROTARY CUP

COAL - HAND FIRED

COAL - STOKER

UNDERFEED - MULTIPLE RETORT  
 UNDERFEED - SINGLE RETORT  
 SPREADER - DUMP GRATE  
 SPREADER - VIBRATING GRATE  
 SPREADER - TRAVELING GRATE  
 CHAIN GRATE

GAS

GAS RING  
 VENTURI TYPE

COAL - PULVERIZER

ATTRITION  
 BALL & RACE  
 BOWL MILL  
 TUBULAR

OIL BURNERS

MECHANICAL  
 STEAM ATOMIZED  
 AIR ATOMIZED  
 ROTARY CUP

FIRING EQUIPMENT MANUFACTURER

PEABODY GORDON PIATT

PROPERTY NO.

59

BUILDING OR LOCATION

738

BOILER 59

ACTIVITY

MCBCL

DATA RECORD SHEET - BOILERS  
MAYFAC 9-11014/40 (9-69) Supersedes AA/DOCKS 2509

FITTING	NUMBER	SIZE	MANUFACTURER	TYPE	SETTING	RANGE	PRESSURE CLASS
SAFETY VALVES	1	3/4	WATTS	MODEL 174A	30		
STEAM OUTLET VALVES	1	2"	STOCKMAN	GATE			125-S
BLOW-OFF VALVES	1	1 1/2"	STOCKMAN	GATE			125-S
FEEDWATER VALVES	1	1/2"	STOCKMAN	GATE			150-S
WATER COLUMN							
FEEDWATER REGULATOR	1	3/4"	TACO		12	10-25	
WATER GAGES							
STEAM GAGES	1	3"	WEISS, <del>ALTITUDE GAGE</del>	ALTITUDE GAGE		0-60 PSE 60-260°F	
SOOT BLOWERS							
FUSIBLE PLUGS							

WAT'L B. 39141

BURNER - MFG. PEABODY GORDON PIATT, NOZZLE TIP SIZE 2.50 GPH.

COMBUSTION CONTROL - HOWEYWELL TYPE R 7795