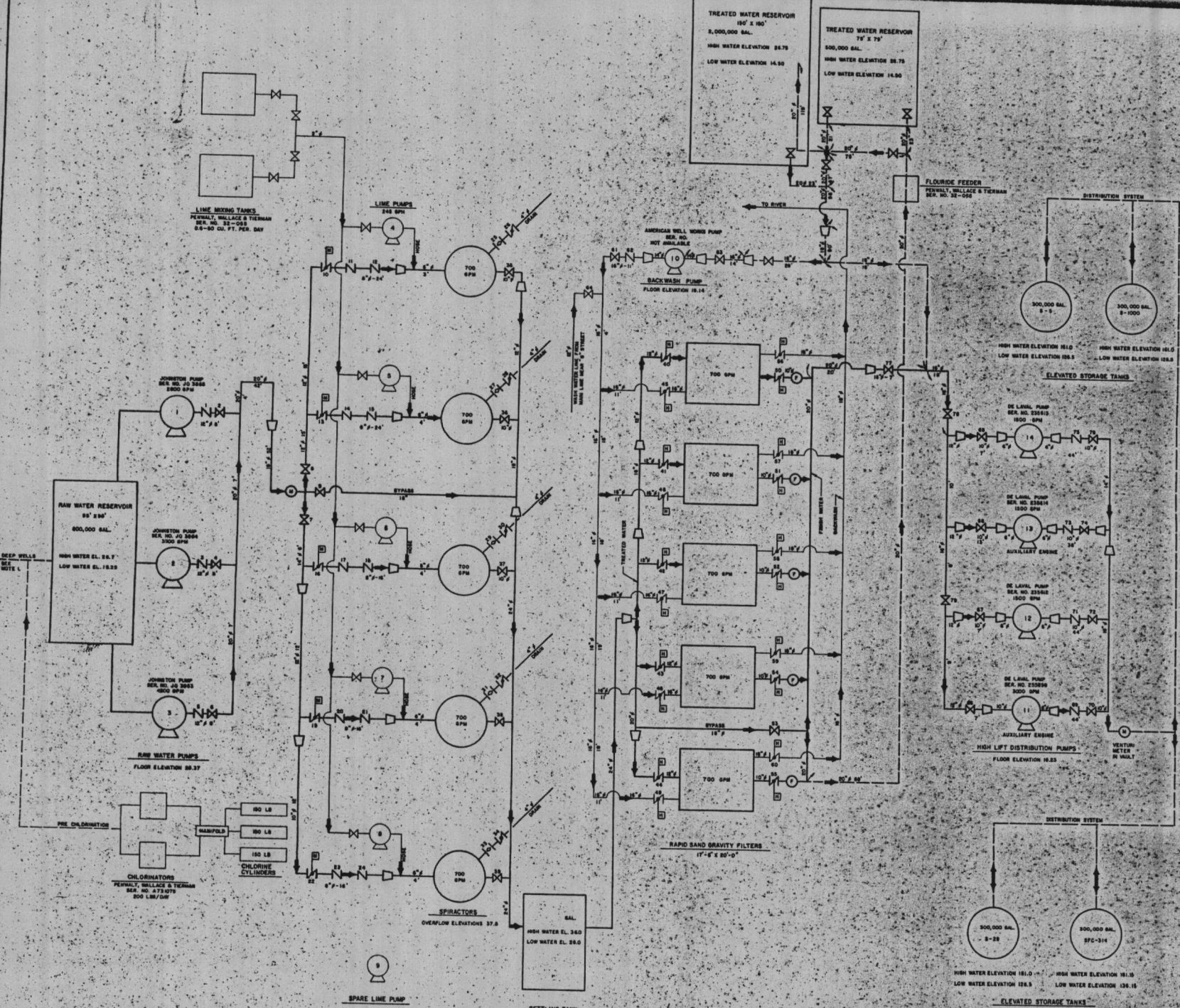


CONTRACT FOR REPLACEMENT OF ALL OF THE RAW WATER RESERVOIR AT THE HADNOT POINT WATER TREATMENT PLANT LISTED AS "IN SERVICE" BUT ARE INCLUDED AS REPLACEMENTS (SEE LEGEND FOR ADDITIONAL NOTES) TWO TANKS IN OUT OF SERVICE, BUT NOT SCHEDULED FOR REPLACEMENT.



- LEGEND**
- WATER LINES, EXISTING AND FUTURE
  - - - WATER LINES, FUTURE OR NOT IN SERVICE
  - BACKWASH LINES, EXISTING AND FUTURE
  - BACKWASH LINES, EXISTING AND FUTURE
  - CHEMICAL LINES, EXISTING AND FUTURE
  - CHEMICAL LINES, FUTURE OR NOT IN SERVICE
  - PUMP NO. 7
  - ⊗ VALVE NO. 6
  - ⊘ GATE VALVE
  - ⊘ CHECK VALVE
  - ⊘ FLOW VALVE
  - ⊘ BUTTERFLY VALVE
  - ⊘ GLOBE VALVE
  - ⊘ BALL VALVE
  - ⊘ ANGLE VALVE
  - ⊘ EDUCTOR
  - ⊘ SIDE OUT SEATED VALVE
  - ⊘ REDUCER
  - ⊘ MOTOR CONTROL VALVE
  - ⊘ HYDRAULIC CONTROL VALVE
  - ⊘ PNEUMATIC CONTROL VALVE
  - ⊘ METER
  - ⊘ RATE OF FLOW CONTROLLER
  - ⊘ ALTITUDE VALVE
  - ⊘ BACK PRESSURE CONTROL VALVE
  - ⊘ BENT GLASS AIR GAP
  - ⊘ PRESSURE GAGE
  - ⊘ AIR RELEASE VALVE
  - DIRECTION OF FLOW

NO.	DESCRIPTION OF REVISION

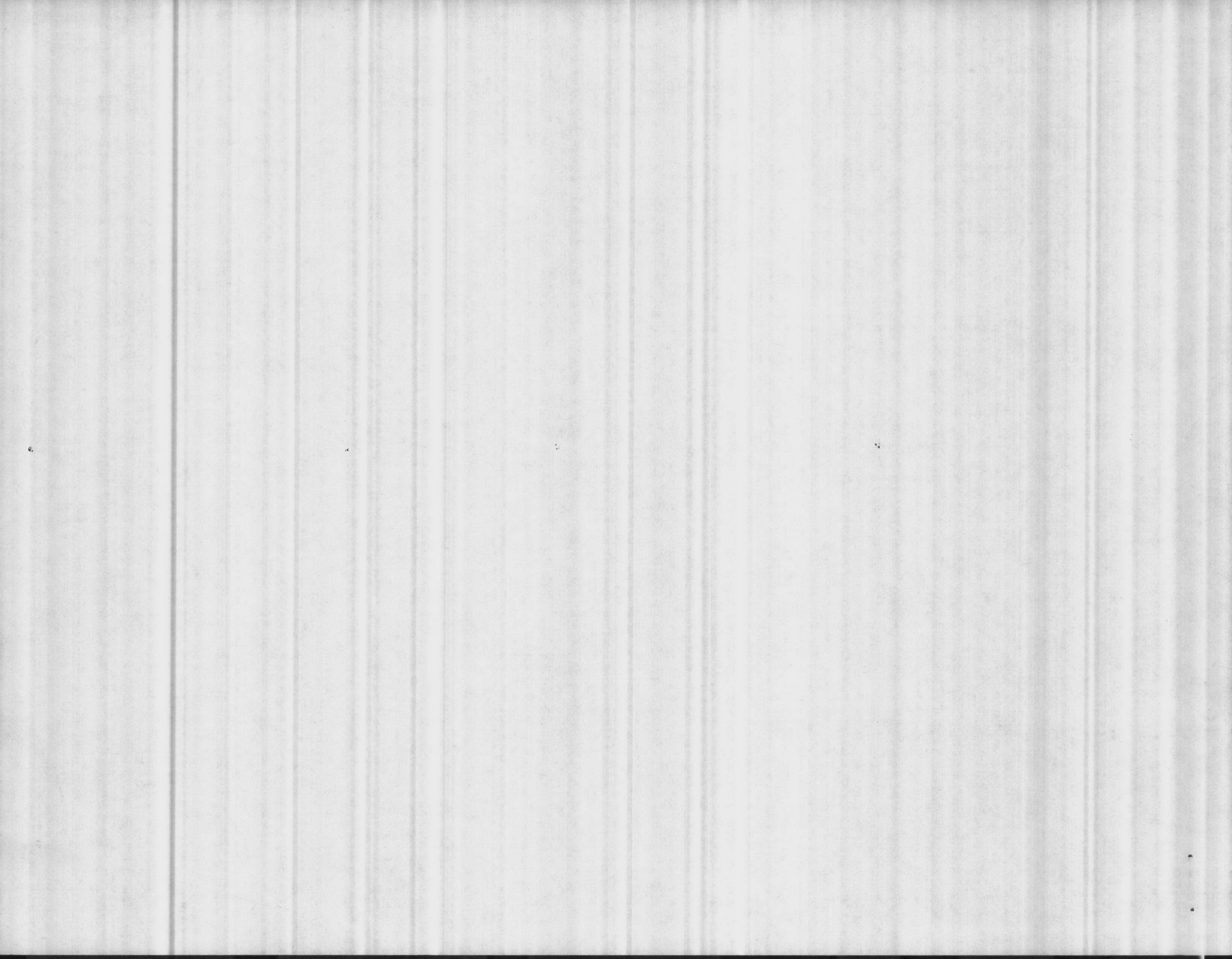
DEPARTMENT OF THE MARINE CORPS  
CAMP LEJEUNE, NORT

**WATER TREATMENT ONE-LINE DIAGRAM HADNOT POINT - BUILDING 100**

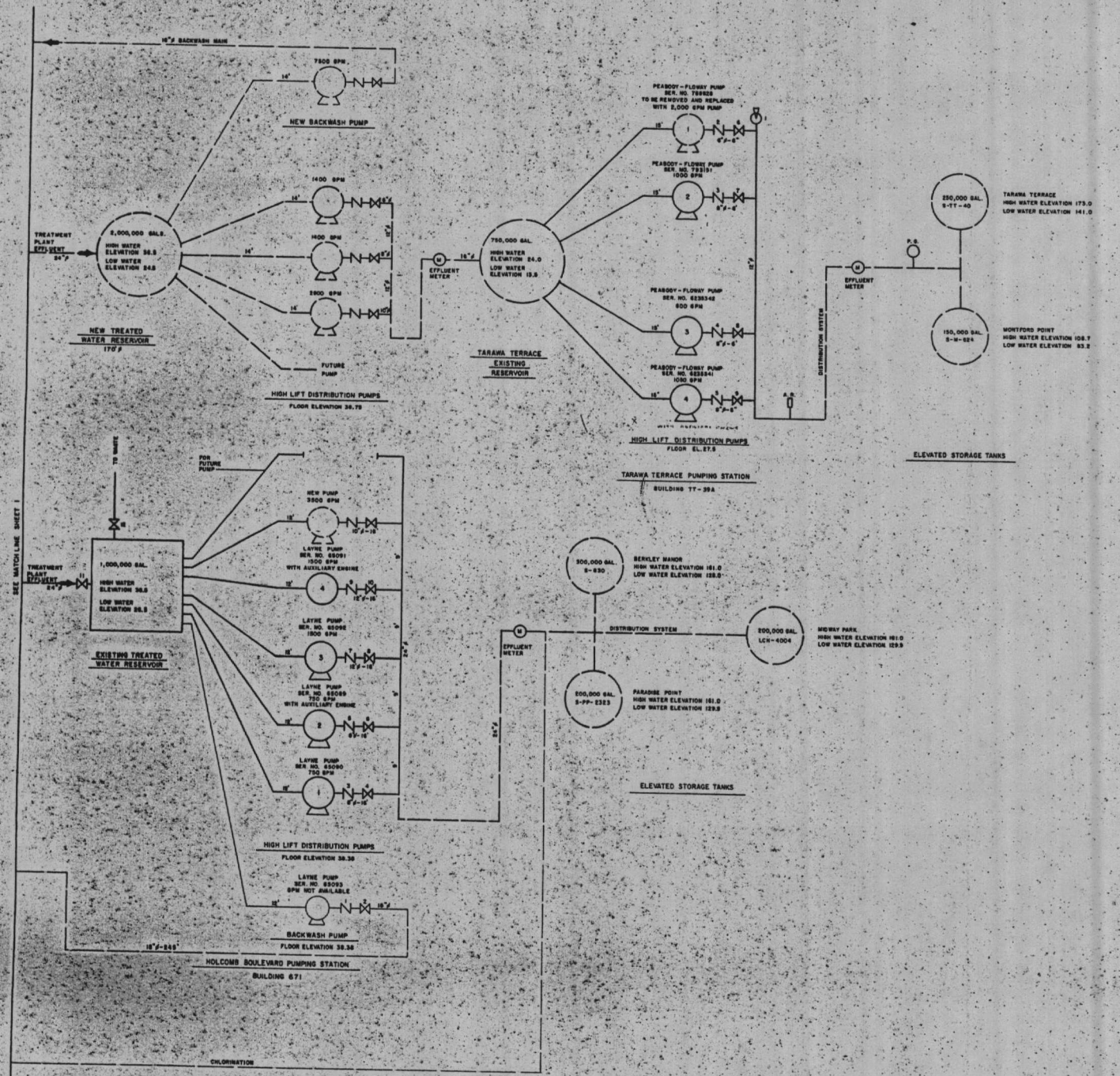
EXISTING CONDITION

DATE: 31 JULY 84 SCALE: NONE

APPROVED / DATE

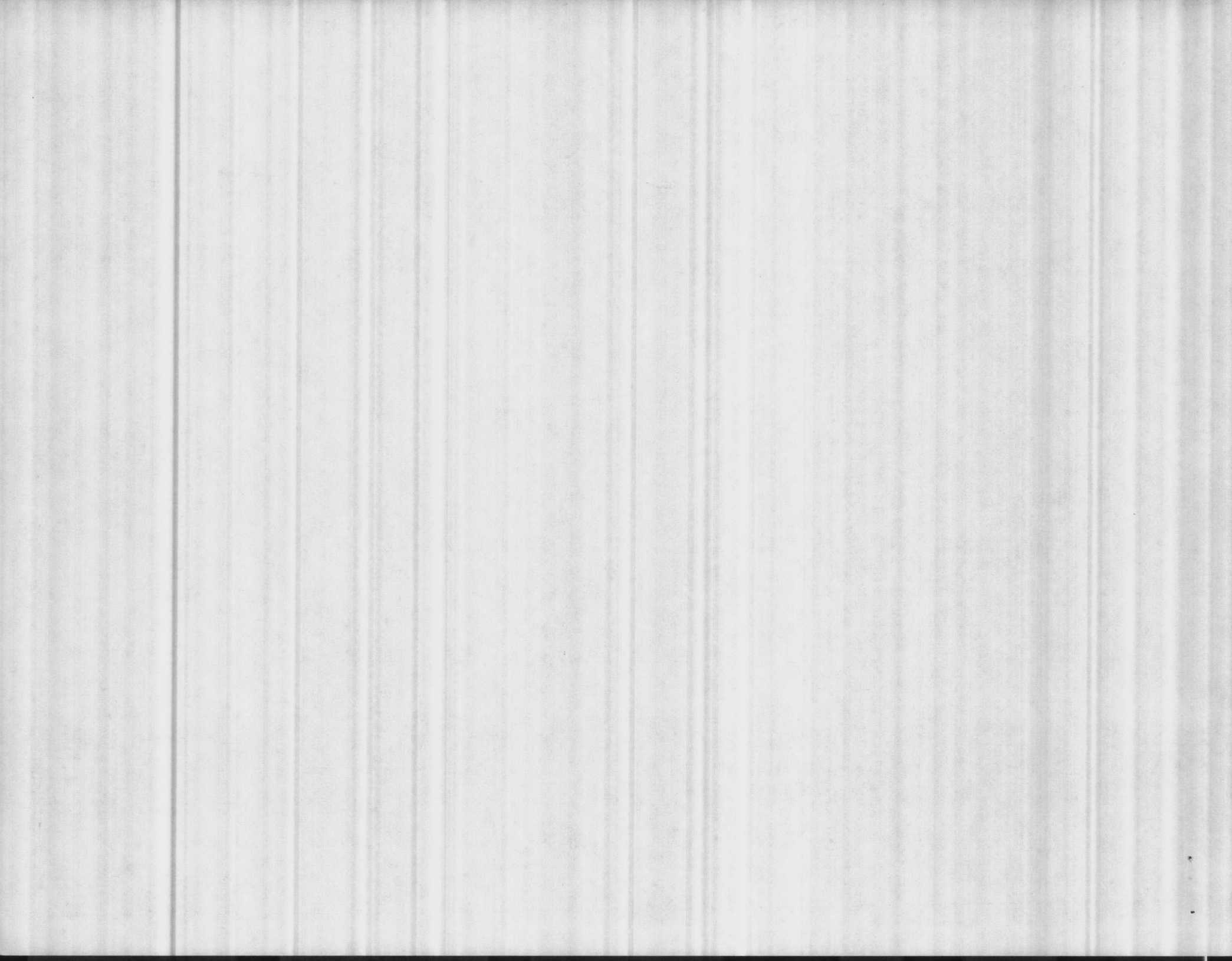






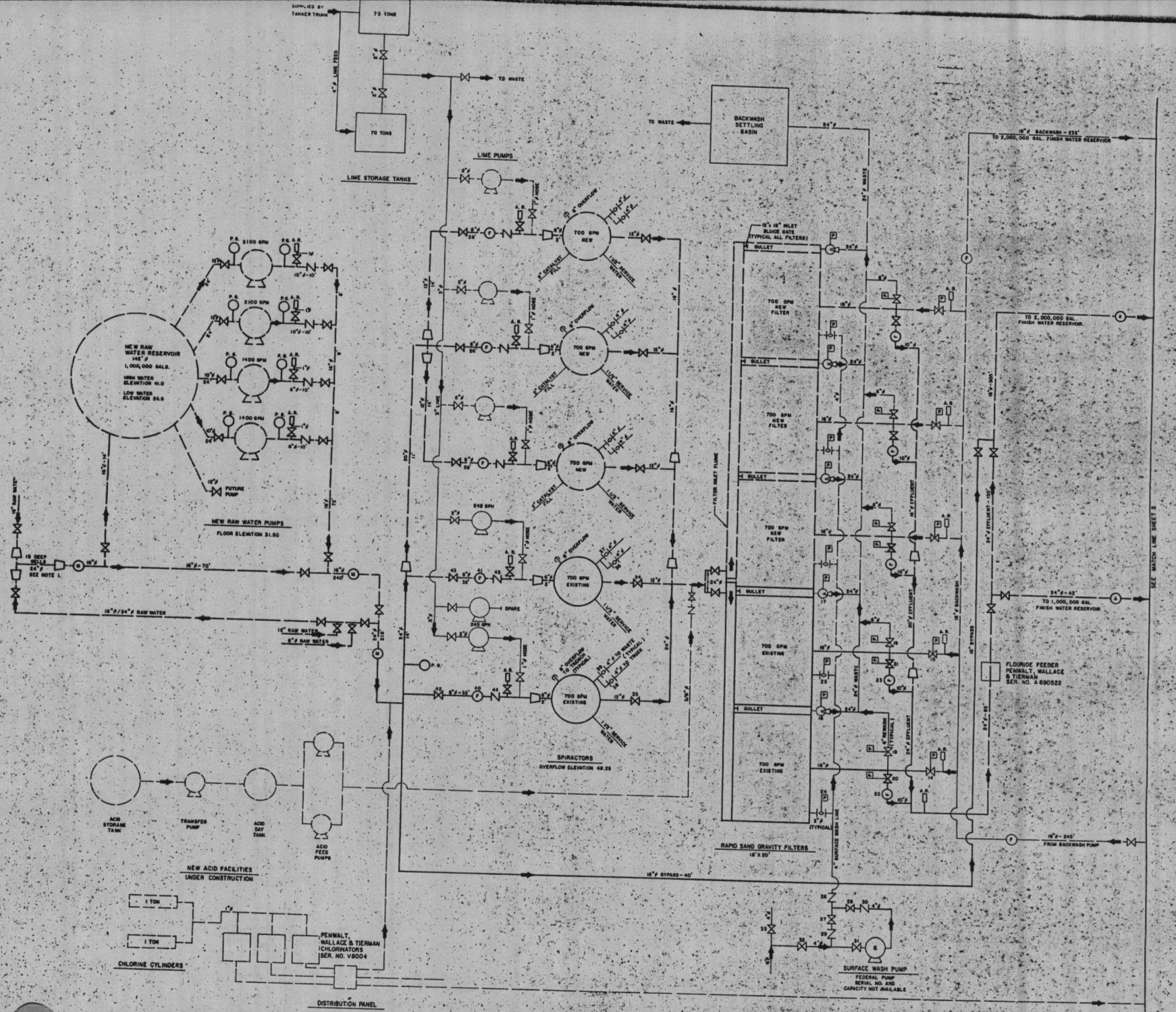
- LEGEND**
- WATER L
  - WATER L
  - BACKWASH
  - BACKWASH
  - CHEMICAL
  - CHEMICAL
  - PUMP IN
  - ⊗ VALVE IN
  - ⊗ GATE W
  - ⊗ CHECK V
  - ⊗ PLUG IN
  - ⊗ BUTTERFLY
  - ⊗ GLOBE V
  - ⊗ BALL W
  - ⊗ ANGLE I
  - ⊗ ELBOW
  - ⊗ SIDE OUT
  - ⊗ REDUCED
  - ⊗ MOTOR I
  - ⊗ HYDRANT
  - ⊗ PNEUMATIC
  - ⊗ METER
  - ⊗ RATE OF
  - ⊗ ALTITUDE
  - ⊗ BACK IN
  - ⊗ BENT 90
  - ⊗ HYDRANT
  - ⊗ AIR REL.
  - DIRECT

NO.	DESIGN
DEPA MARI CAMP LEJ	
WATER ON HOLCOMB	
EXI	
DATE 31 JULY 84	BY
APPROVED / DATE	





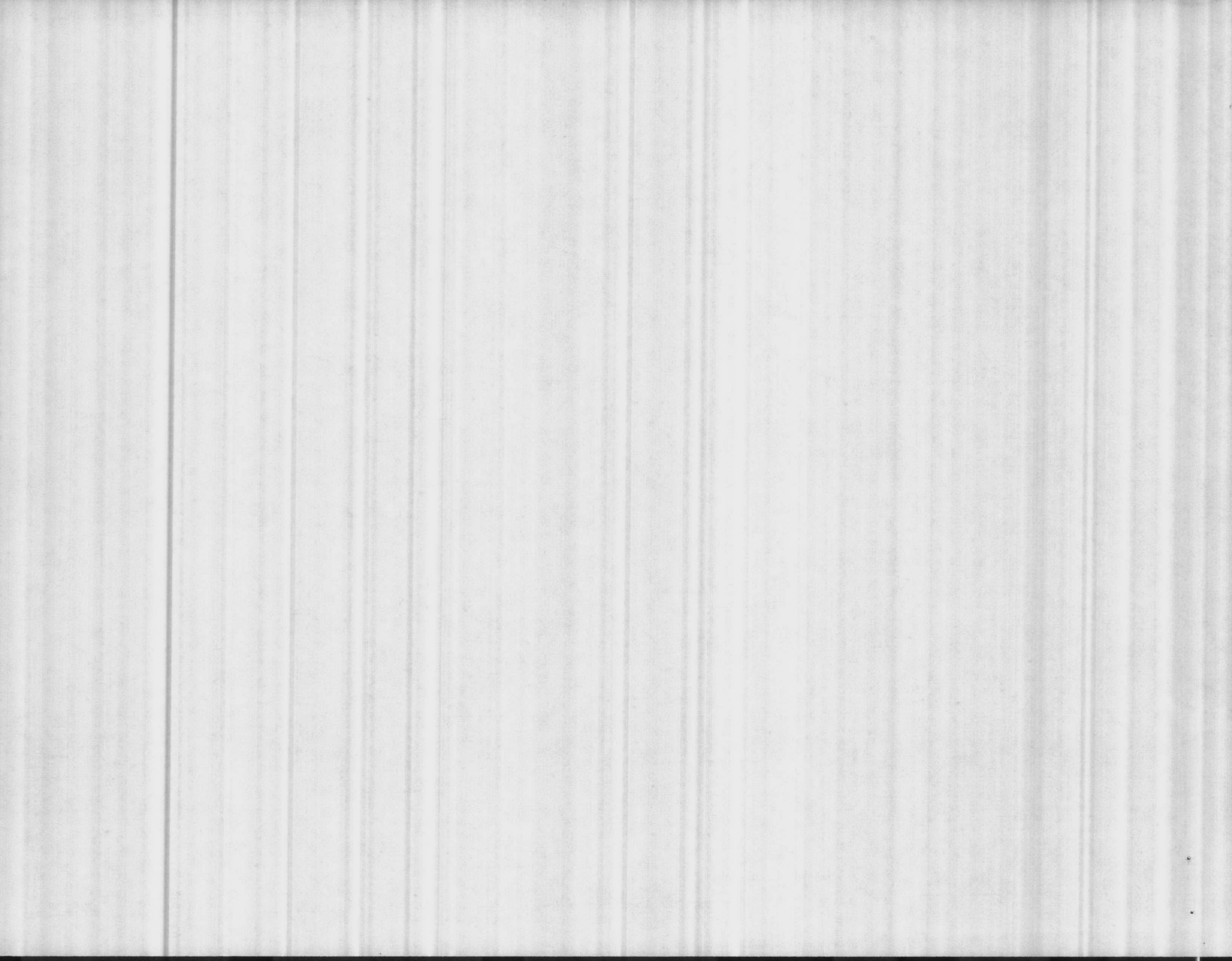
1. EIGHT WATER WELLS ARE SYSTEM 12K NEW WELL. REFER TO 84-11-11 AND 84-11-12 AND 84-11-13 AND 84-11-14 AND 84-11-15 AND 84-11-16 AND 84-11-17 AND 84-11-18 AND 84-11-19 AND 84-11-20 AND 84-11-21 AND 84-11-22 AND 84-11-23 AND 84-11-24 AND 84-11-25 AND 84-11-26 AND 84-11-27 AND 84-11-28 AND 84-11-29 AND 84-11-30 AND 84-11-31 AND 84-11-32 AND 84-11-33 AND 84-11-34 AND 84-11-35 AND 84-11-36 AND 84-11-37 AND 84-11-38 AND 84-11-39 AND 84-11-40 AND 84-11-41 AND 84-11-42 AND 84-11-43 AND 84-11-44 AND 84-11-45 AND 84-11-46 AND 84-11-47 AND 84-11-48 AND 84-11-49 AND 84-11-50 AND 84-11-51 AND 84-11-52 AND 84-11-53 AND 84-11-54 AND 84-11-55 AND 84-11-56 AND 84-11-57 AND 84-11-58 AND 84-11-59 AND 84-11-60 AND 84-11-61 AND 84-11-62 AND 84-11-63 AND 84-11-64 AND 84-11-65 AND 84-11-66 AND 84-11-67 AND 84-11-68 AND 84-11-69 AND 84-11-70 AND 84-11-71 AND 84-11-72 AND 84-11-73 AND 84-11-74 AND 84-11-75 AND 84-11-76 AND 84-11-77 AND 84-11-78 AND 84-11-79 AND 84-11-80 AND 84-11-81 AND 84-11-82 AND 84-11-83 AND 84-11-84 AND 84-11-85 AND 84-11-86 AND 84-11-87 AND 84-11-88 AND 84-11-89 AND 84-11-90 AND 84-11-91 AND 84-11-92 AND 84-11-93 AND 84-11-94 AND 84-11-95 AND 84-11-96 AND 84-11-97 AND 84-11-98 AND 84-11-99 AND 84-11-100



**LEGEND**

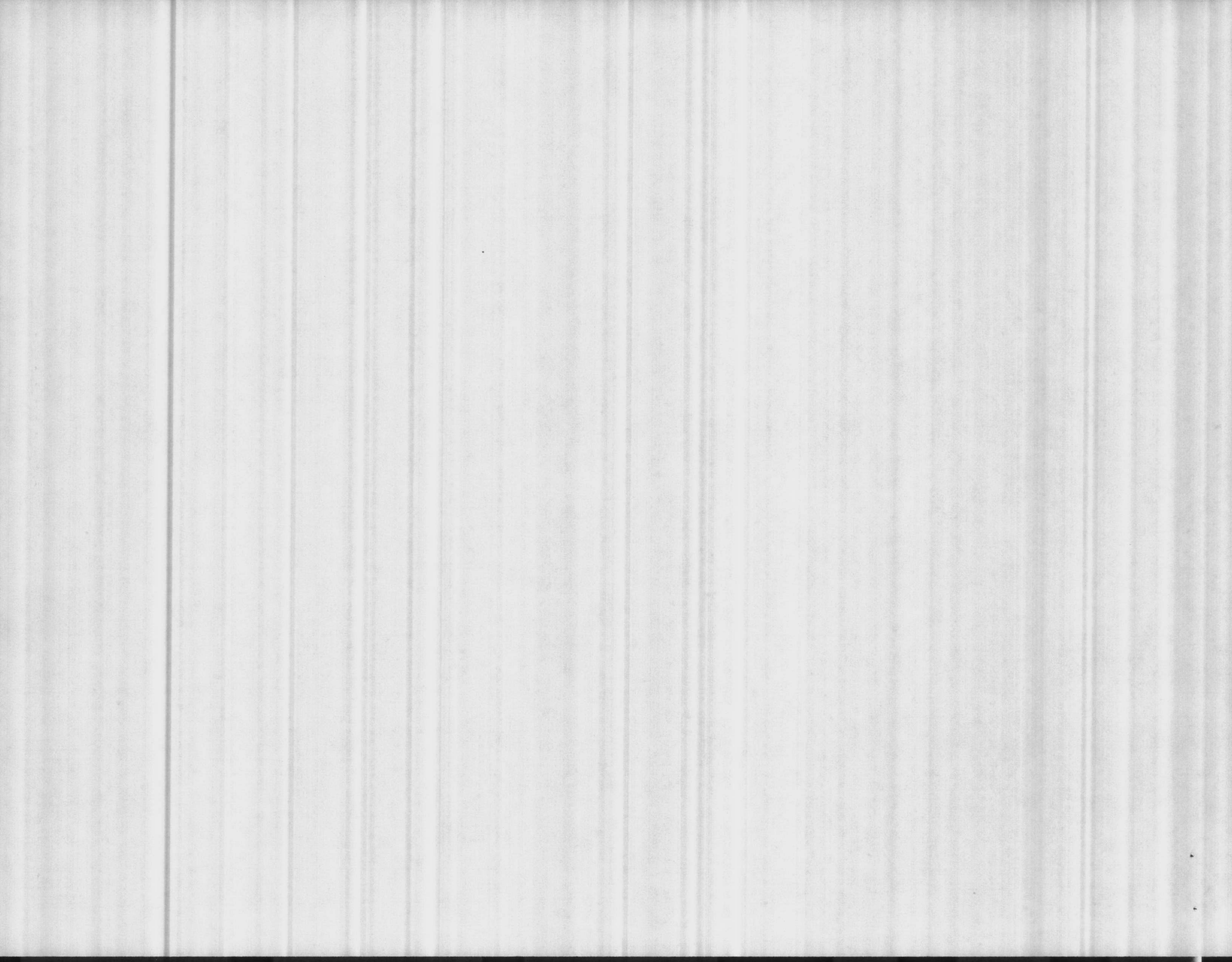
- WATER
- WATER
- BACKWASH
- BACKWASH
- CHEMICAL
- CHEMICAL
- PUMP
- VALVE
- GATE
- CHECK
- PLUG
- BUTTERFLY
- SLIDE
- BALL
- HANDLE
- EXHAUST
- REDUCER
- MOTOR
- HYDRANT
- PRESSURE
- METER
- RATE OF
- ALTITUDE
- BACK PUMP
- DRAIN
- PRESSURE
- AIR HOLE
- DIRECT

NO.	DESCR.
	DEPAR
	MARIJ
	CAMP LEJE
<b>WATER ONE</b>	
<b>HOLCOMB I</b>	
<b>EXIS</b>	
DATE 31 JULY 84	BCJ
APPROVED / DATE	

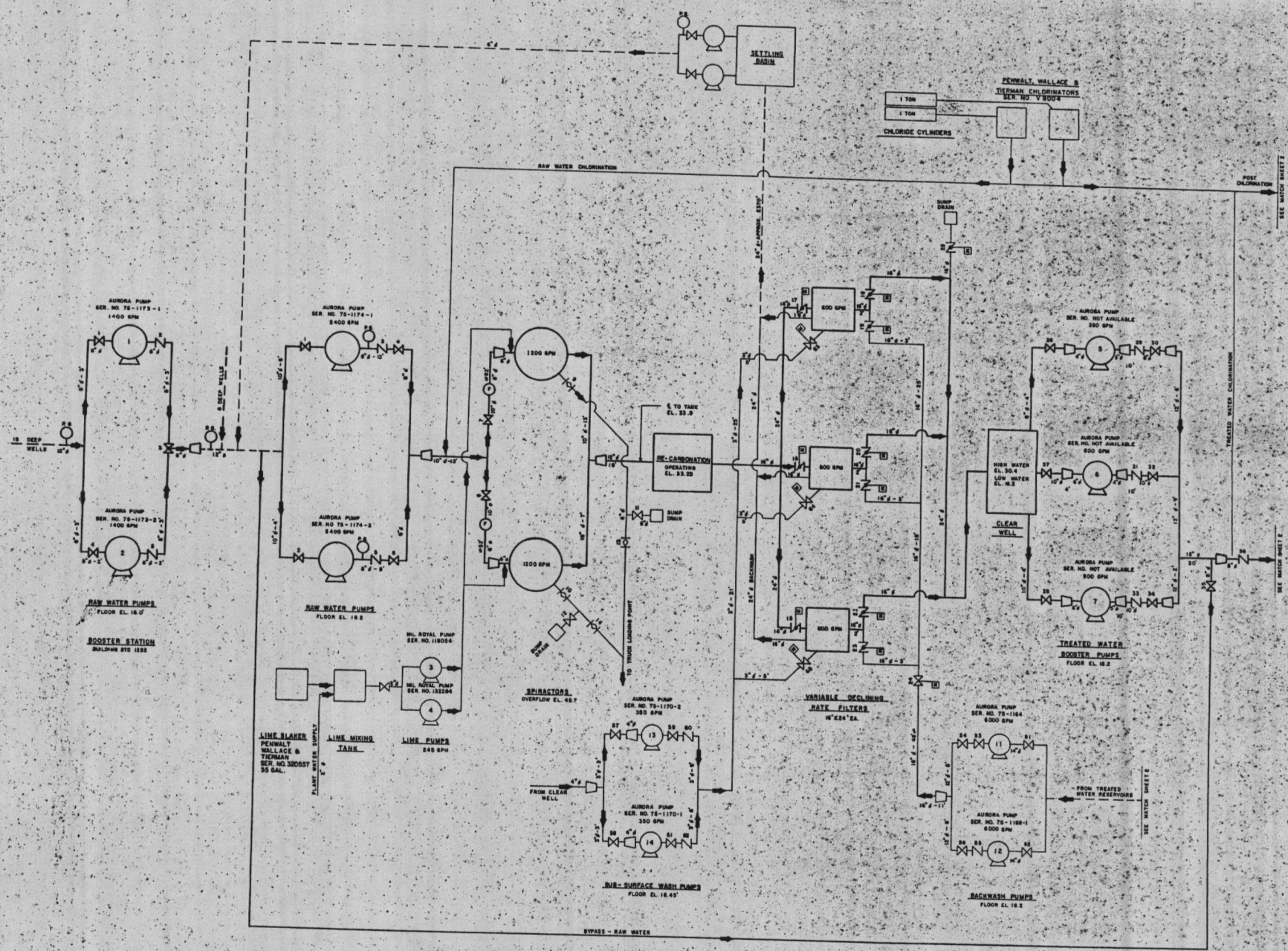








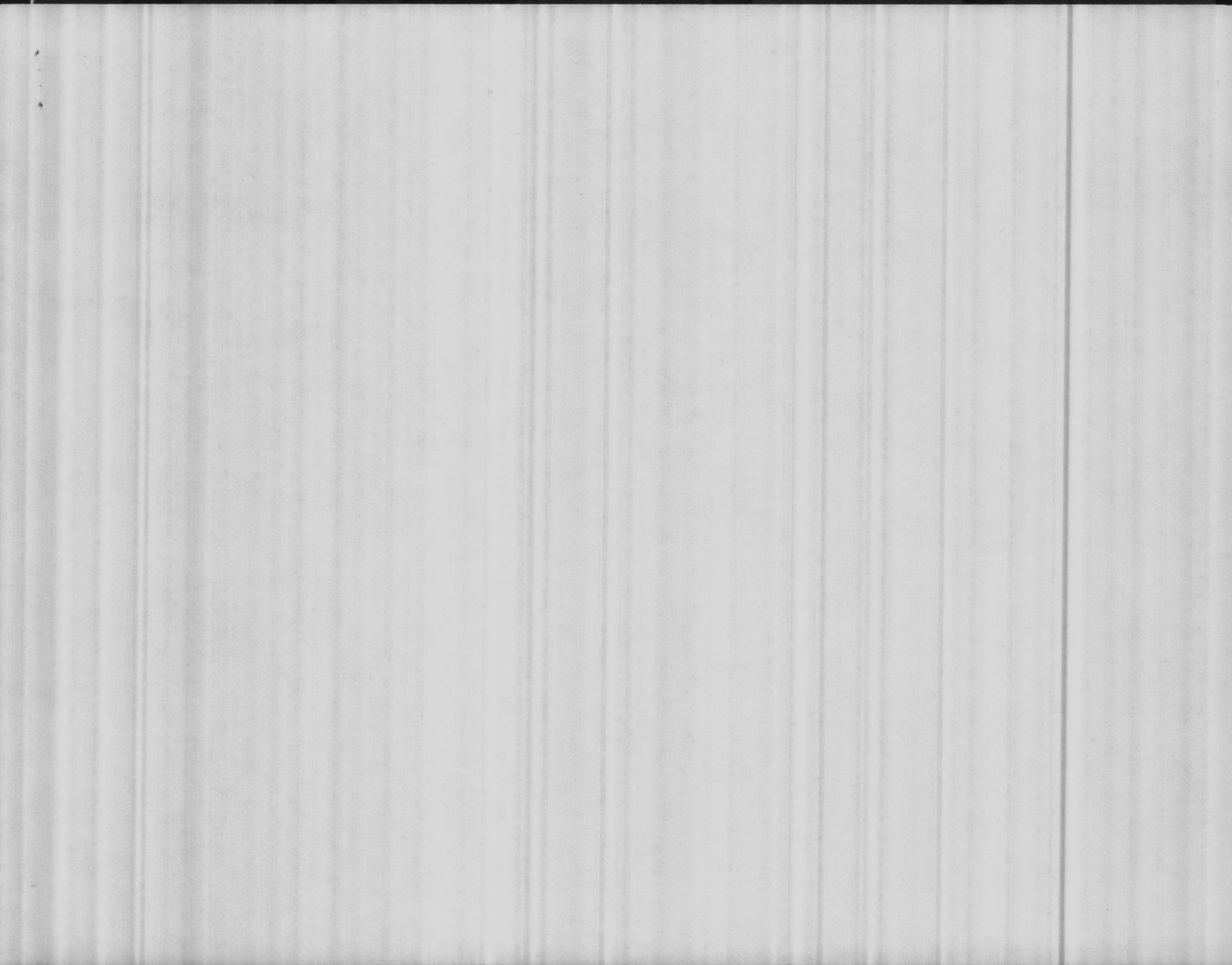




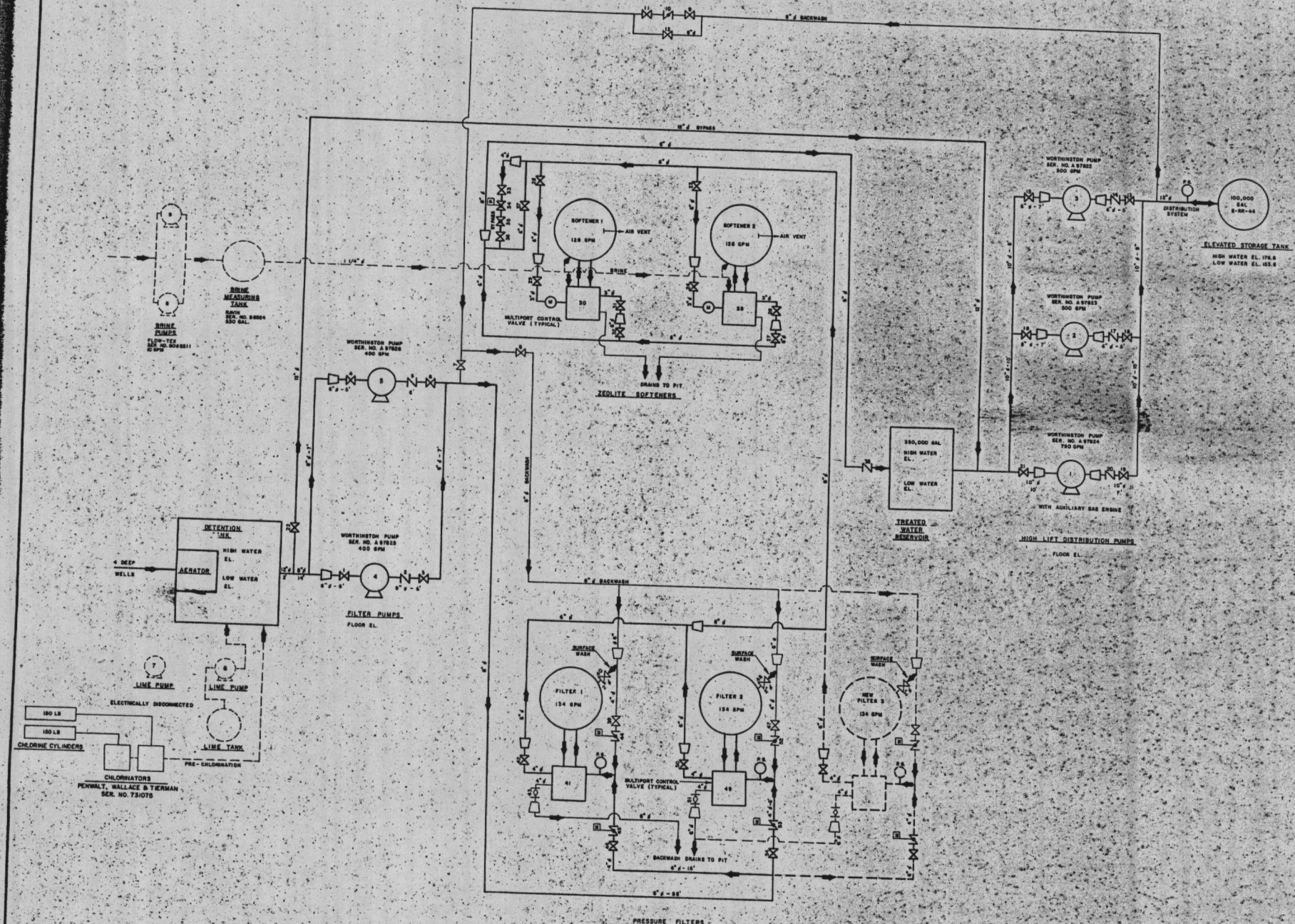
- LEGEND**
- WATER LINE
  - - - WATER LINE
  - - - BACKWASH
  - - - BACKWASH
  - - - CHEMICAL L
  - - - CHEMICAL L
  - PUMP NO. 7
  - ⊗ VALVE NO. 6
  - ⊕ GATE VALVE
  - ⊖ CHECK VALVE
  - ⊘ BUTTERFLY
  - ⊙ FLORE VALVE
  - ⊙ BALL VALVE
  - ⊙ ANGLE VALVE
  - ⊙ REDUCER
  - ⊙ SEE OUT SHEET
  - ⊙ MOTOR CONT.
  - ⊙ HYDRAULIC C
  - ⊙ PNEUMATIC I
  - ⊙ METER
  - ⊙ RATE OF FLO
  - ⊙ ALTITUDE W
  - ⊙ BACK PRESS
  - ⊙ SHUT BLAS
  - ⊙ PRESSURE G
  - ⊙ AIR RELEASE
  - ⊙ DIRECTION C

MARINE CORPS AIR STATION WATER TREATMENT PLANT  
BUILDING MCAS - 110

NO.	DESCRIP.
DEPART MARINI CAMP LEJEU	
WATER ONE MARINE CORPS AIR EXIST	
DATE	31 JULY 84 SCA
APPROVED / DATE	







- LEGEND**
- WATER
  - WATER
  - BACKWASH
  - BACKWASH
  - CHECKED
  - CHECKED
  - PUMP IN
  - VALVE 1
  - GATE W
  - CHECK 1
  - PLUS 1/8"
  - BUTTERFLY
  - GLOBE V
  - BALL W
  - GLOBE V
  - CONDUIT
  - ROE CUT
  - REDUCED
  - MOTOR D
  - HYDRANT
  - FURNISH
  - WATER
  - RATE OF
  - ALTITUDE
  - BACK PNE
  - NIGHT EL.
  - PRESSURE
  - AIR REL
  - DIRECTOR

NO.	DESCR
	DEPAN
	MARIN
	CAMP LEJE
WATER ONE RIFLE RJ EXIS	
DATE 31 JULY 64	SCA
APPROVED / DATE	

