

603

610

611 ? CHECK

612 ? u

613

614 CAVED

621

LCH4006

627 CAVED

634

642

617

601

$$\begin{array}{r} 26.4 \\ 16 \\ \hline 42.4 \end{array}$$

$$\begin{array}{r} 31.7 \\ 26 \\ \hline 57.7 \end{array}$$

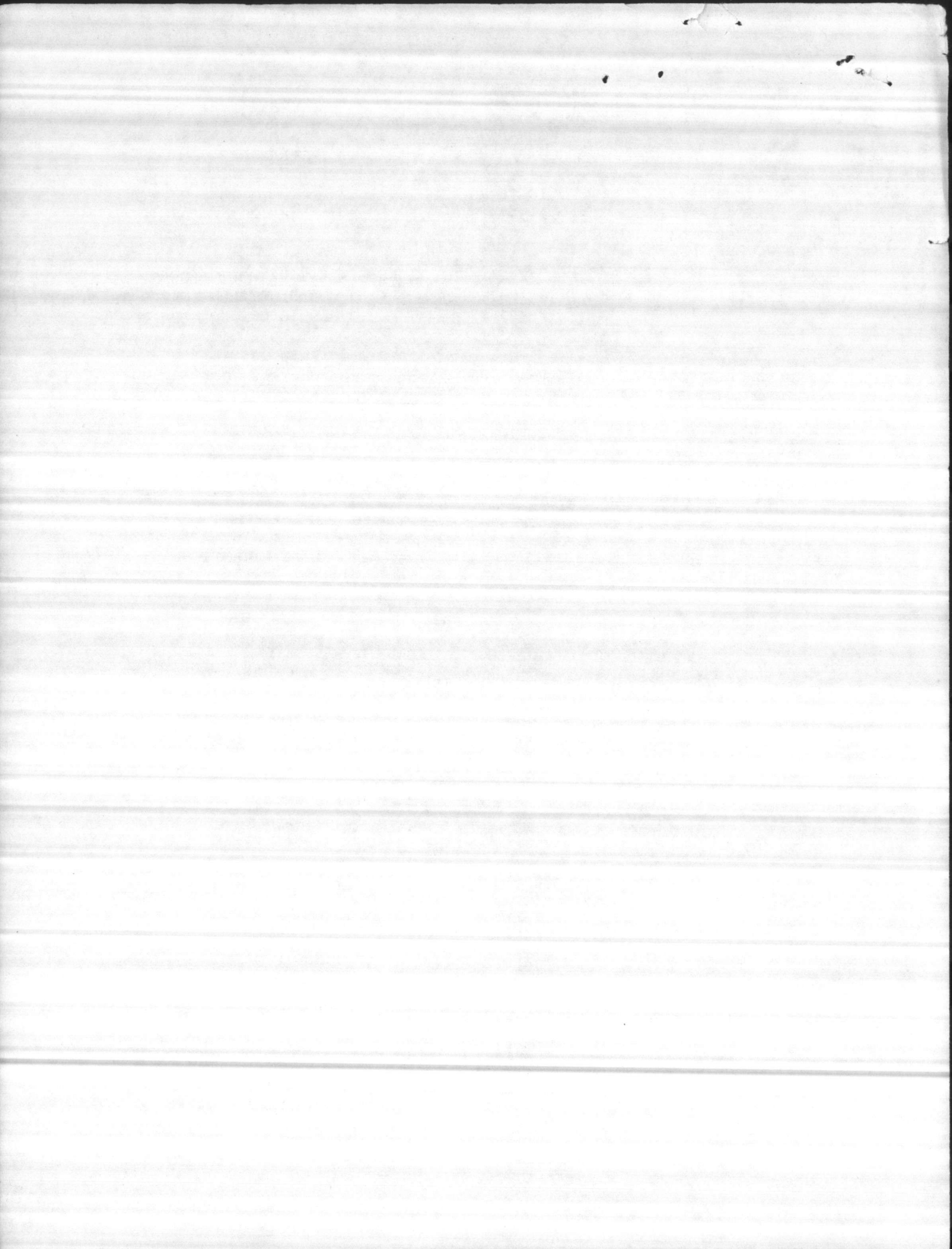
42

57

1/30/79

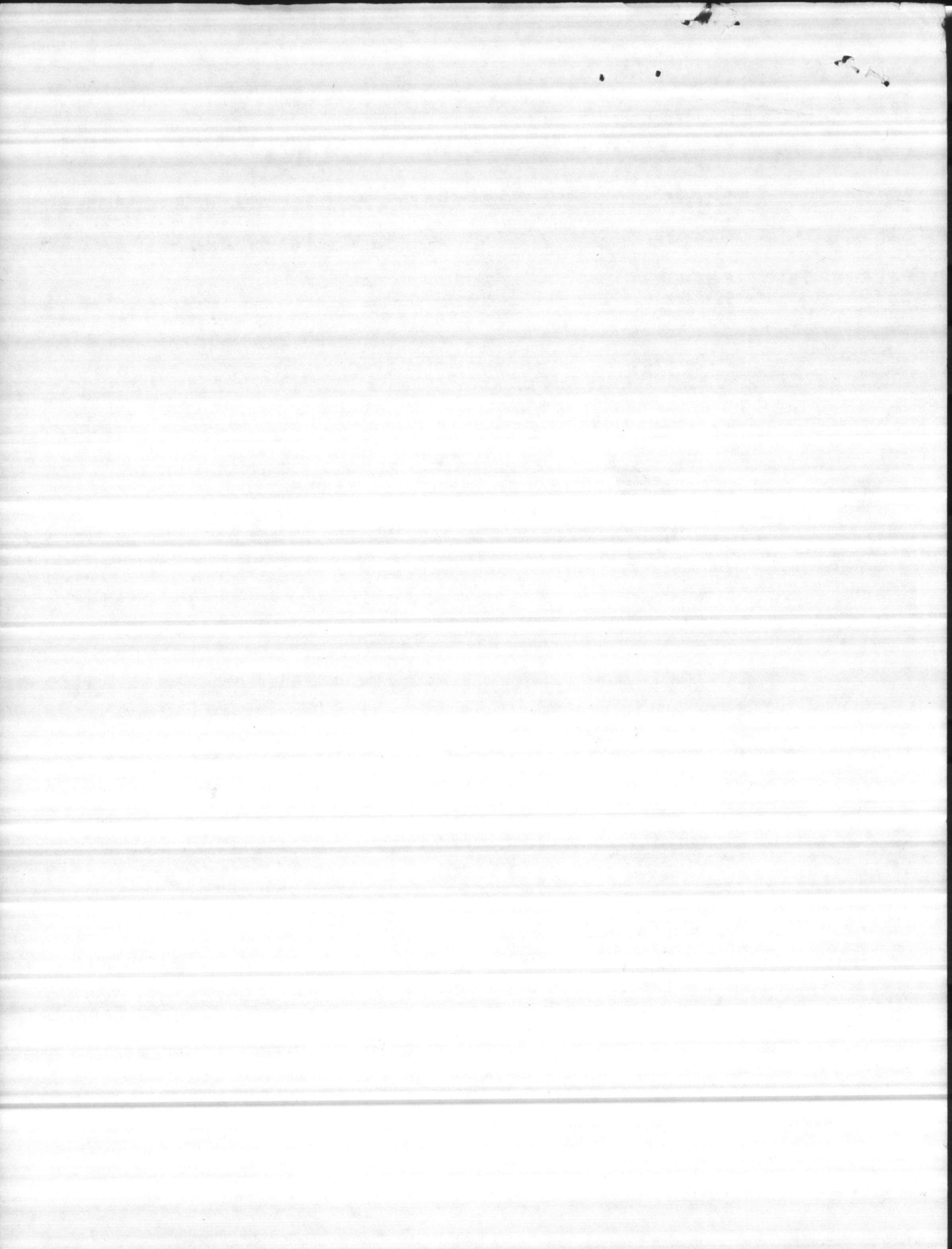
WELL PUMP REPAIRS

<u>BLDG. NO.</u>	<u>START</u>	<u>WORK REQ. COMPLETED</u>	<u>REMARKS</u>
601	10-4-76	10-26-76	
601	1-11-78	2-3-78	<i>well abandoned, filed for replacement</i>
601	5-30-79	7-10-79	
601	7-10-79		
602	2-11-77	3-15-77	<i>PUMP JAMMED WHEN TURNED ON</i>
603	THIS PUMP WAS PULLED SEVERAL TIMES -		<i>TURNED IN TICKET FOR WHITE TO CHECK NEW W.O. TO PULL PUMP OUT</i>
606	3-28-77	4-18-77	LEFT WITHOUT BLOW OFF CONNECTED COULD NOT RUN - WATER TREATMENT HAD TO CONNECT UP
606	4-18-77	11-22-77	
608	2-2-77		Pump was left without spool put in. Out one year. Plumbing shop said had to have one made.
	3-13-78	1-30-79	
609	3-28-77	4-15-77	<i>still not operating</i>
612	12-20-76	6-13-77	
	1-26-78		
	11-1-78	12-8-78	
613	6-28-78	8-8-78	LEFT WITHOUT SHAFT - SAID HAD TO MAKE ONE - LOST IT - <i>working 31/79</i>
614	11-9-78	12-16-78	This well caved in.
615	9-23-77	12-6-77	
620	LEFT WITHOUT BLOW OFF CONNECTED UP		<i>out</i>
621	11-15-78	STILL OUT	
634	12-21-76	?	<i>3 yrs old</i>
	4-20-78	6-14-78	
	PUMP OUT AGAIN - SHAFT FELL OUT - WORK REQUEST TURNED IN		
636	4-20-78	8-8-78	
638	1-12-79	STILL OUT	SHAFT VIBRATES - HAS TO BE PULL
639	1-10-79	STILL OUT	NOT PUMPING ANY WATER
640	3-28-77	?	NOT PUMPING ANY WATER
	7-7-77	10-5-77	
	1-10-79	STILL OUT	
HB. 646	7-13-78	9-5-78	
TT-30	8-22-77	10-26-77	STOPPED UP
	1-10-79	STILL OUT	
TT-31	3-6-78	4-5-78	<i>new in 1972</i> <i>in 1976 ordered impeller - too large for hole</i> <i>9 stage impeller pulled & reworked - new shaft etc.</i> <i>lasted less than week - rebuilt again - lasted 3 days</i>
	9-25-78	10-15-78	
	1-12-79	STILL OUT	
			NEW PUMP ORDERED
	<i>11-3-78 in</i>	<i>9-2-77 in operation</i>	<i>9-6-77 out</i>
	<i>12-31-78 out</i>	<i>10-21-77 " "</i>	<i>11-3-77 out</i>
		<i>11-5-78 " "</i>	<i>4-6-78 " "</i>
		<i>10-18-78 " "</i>	<i>5-22-78 " "</i>
		<i>10-13-79 " "</i>	<i>10-21-78 " "</i>

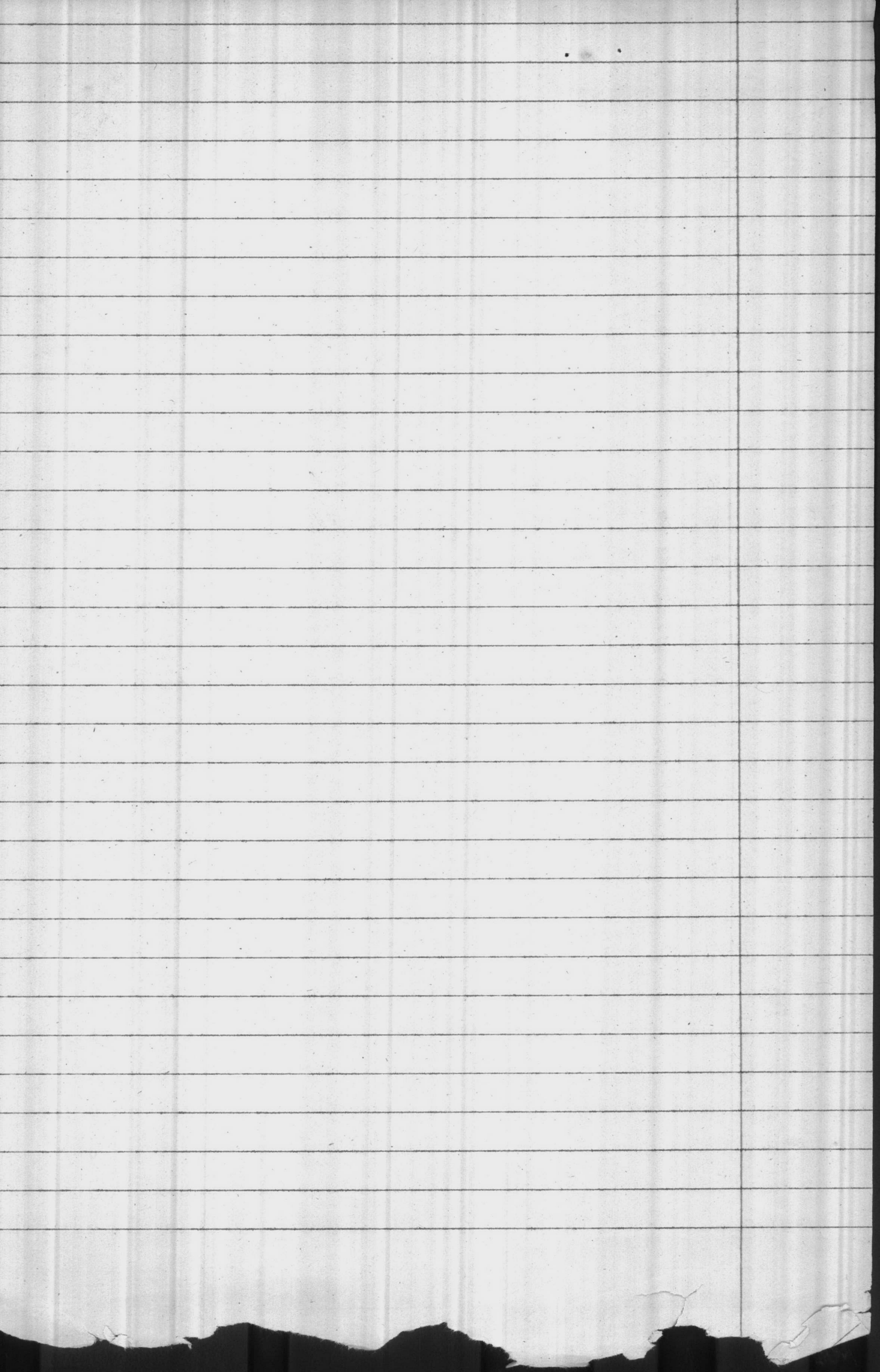


	WORK REQUEST		
	<u>START</u>	<u>COMPLETED</u>	<u>REMARKS</u>
TT-67	11-20-78	1-30-79	
M-243	2-14-78	5-12-78	THIS WELL CAVED IN
RR-45	10-20-78	10-27-78	
RR-227	6-29-77	7-78	
	9-28-77	10-27-78	
	12-4-78	1-2-79	
BB-44	9-20-77	11-11-77	

WELL HAS NO WATER



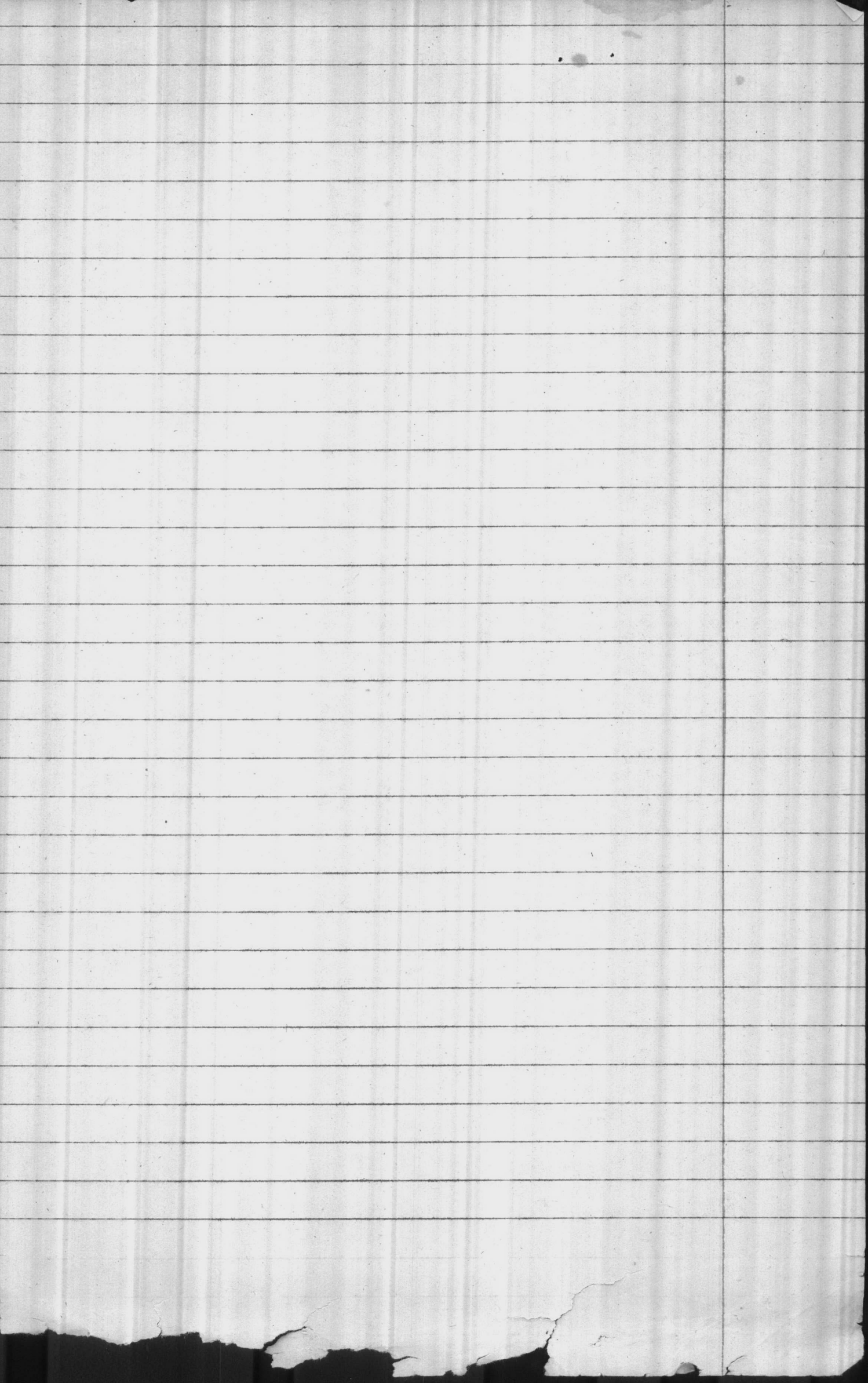
	out	in	in
601	5-30-79 out		still in in pump dropped in well
603	6-13-79	8-12-79	new pump
610	2-12-79	8-29-79	new pump
611	8-7-79		caved
612			
613	3-28-78	8-15-79	General repairs
614	11-9-78		Caved
620	5-4-79	7-12-79	Grating flange long
621	11-15-78		Caved
625	11-15-75		Caved
627	4-15-79		Caved
634	1-17-79	7-13-79	new pump ordered
642	3-26-79		new pump
653	5-6-79	8-31-79	new well + pump pump vibrating cost work



3/23/79

WELLS NEEDING ATTENTION

- 602 LOW PRODUCTION
- 608 STILL OUT WAITING FOR AIRLINE
- 610 OUT WAITING NEW PUMP
- 613 OUT WAITING REPAIR
- 614 OUT CAVED
- 616 OUT, VERY LOW PRODUCTION
- 617 CAVED
- 619 CAVED
- 621 OUT AWAITING REPAIR
- 625 CAVED
- 634 OUT AWAITING NEW PUMP OLD PUMP
DROPPED IN WELL
- 635 LOW PRODUCTION
- 638 OUT LOW PRODUCTION - ^{IN} 3-23-79
- 639 PULLED CHECKED REPLACED, STILL
LOW PRODUCTION
- 642 LOW PRODUCTION



Memorandum

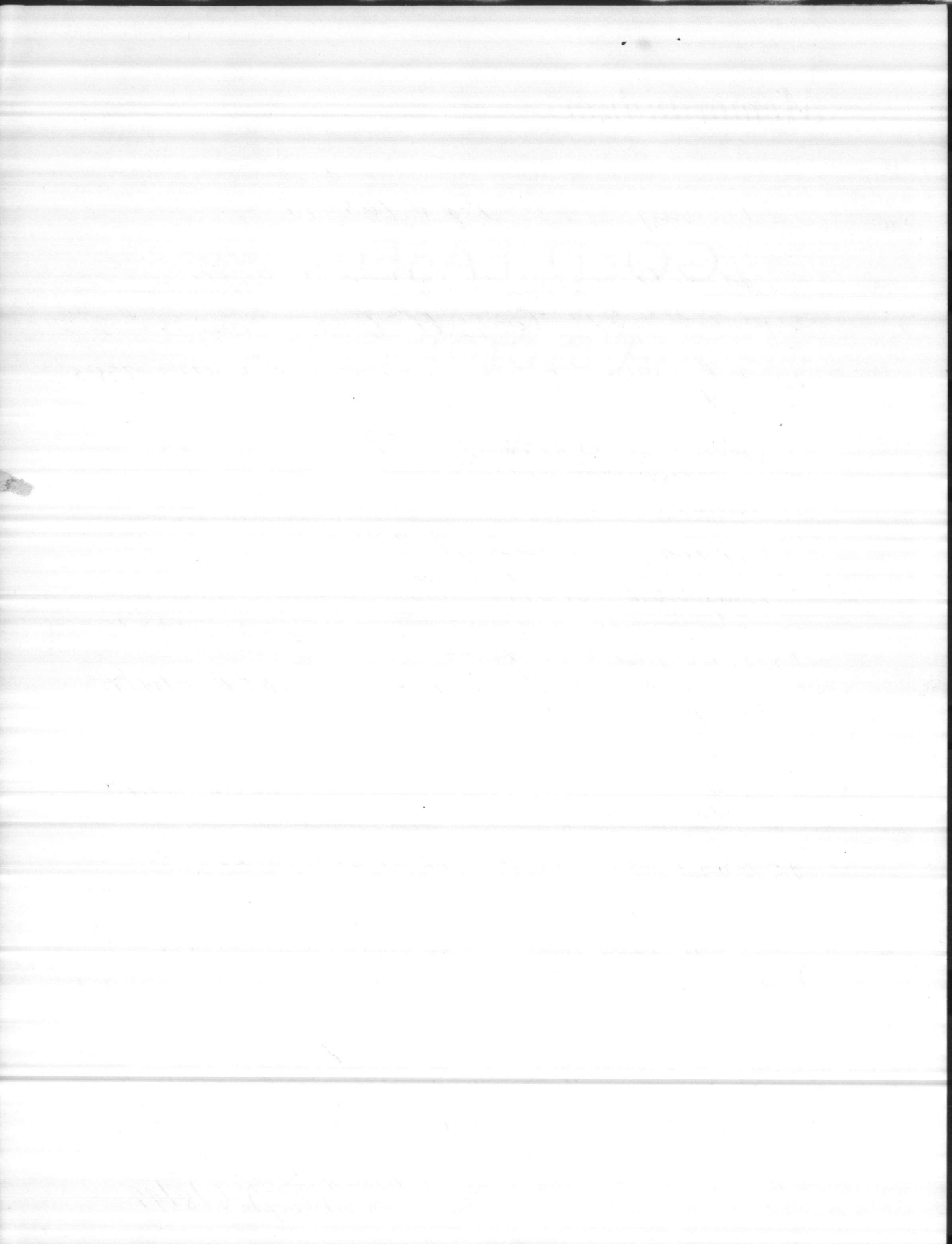
DATE:

FROM

TO

SUBJ

- 27 July 1979 Req # 165-79
relocate new pump just installed
in well 621 to well 603 Completed 8/12/79
- 20 July 1979 Req # 159-79 W.O.# 4560-2383
Repair well pump bldg LCH 4006
Completed 8/20/79
- 20 July 1979 Req # 158-79 W.O.# 4552-2383
Repair well pump 611
Completed 8/14/79
- 13 June 1979 Req 143-79 W.O.# 4466-2383
Repair well pump 603 Completed 8/14/79
- 30 May 1979 Req # 139-79 W.O.# 4404-2383
Repair well pump 601 Completed 7/10/79
- 25 April 1979 Req # 122-79 W.O. 4263-2383
Repair well pump + blow well Comp. 5/31/79
- 4 April 1979 Req. 111-79 W.O. 4107-2383
Repair well pump bldg T.T. 53 Comp. 5/11/79
- 21 Mar. 1979 Req # 105-79 W.T.# 308756-61
Replace airline bldg AS-5001 Comp. 4/19/79
- 14 Mar 1979 Req. # 103-79 W.O.# 4062-2383
Clean + Repair well pump bldg AS-4140
Comp. 6/8/79



Memorandum

DATE:

FROM

TO

SUBJ

29 Jan 1979 - Req # 84-79 W.O.# 3827-2383

Replace well pump 621
Comp. 8/14/79

29 Jan. 1979 Req. 83-79 W.O.-3765-2383

Replace well pump T.C. 1000 Comp. 8/10/79

29 Jan. 1979 Req. 82-79 W.O.-3763-2383

Replace well pump T.T. 31 Comp. 8/6/79

17 Jan 1979 Req# 78-79 W.O.# 3707-2383

Repair well pump 642 not comp.

17 Jan 1979 Req.# 76-79 W.O.# 3906-2383

Repair well pump 634 Comp. 6/26/79

16 Jan. 1979 Req.# 75-79 W.O. 3708-2383

Repair well pump 610 Comp. 8/8/79

15 Jan. 1979 Req# 72-79 W.O.# 3686-2383

Repair well pump 616 Comp. 5/31/79

12 Jan. 1979 - Req# 69-79 W.O.- 3659-2383

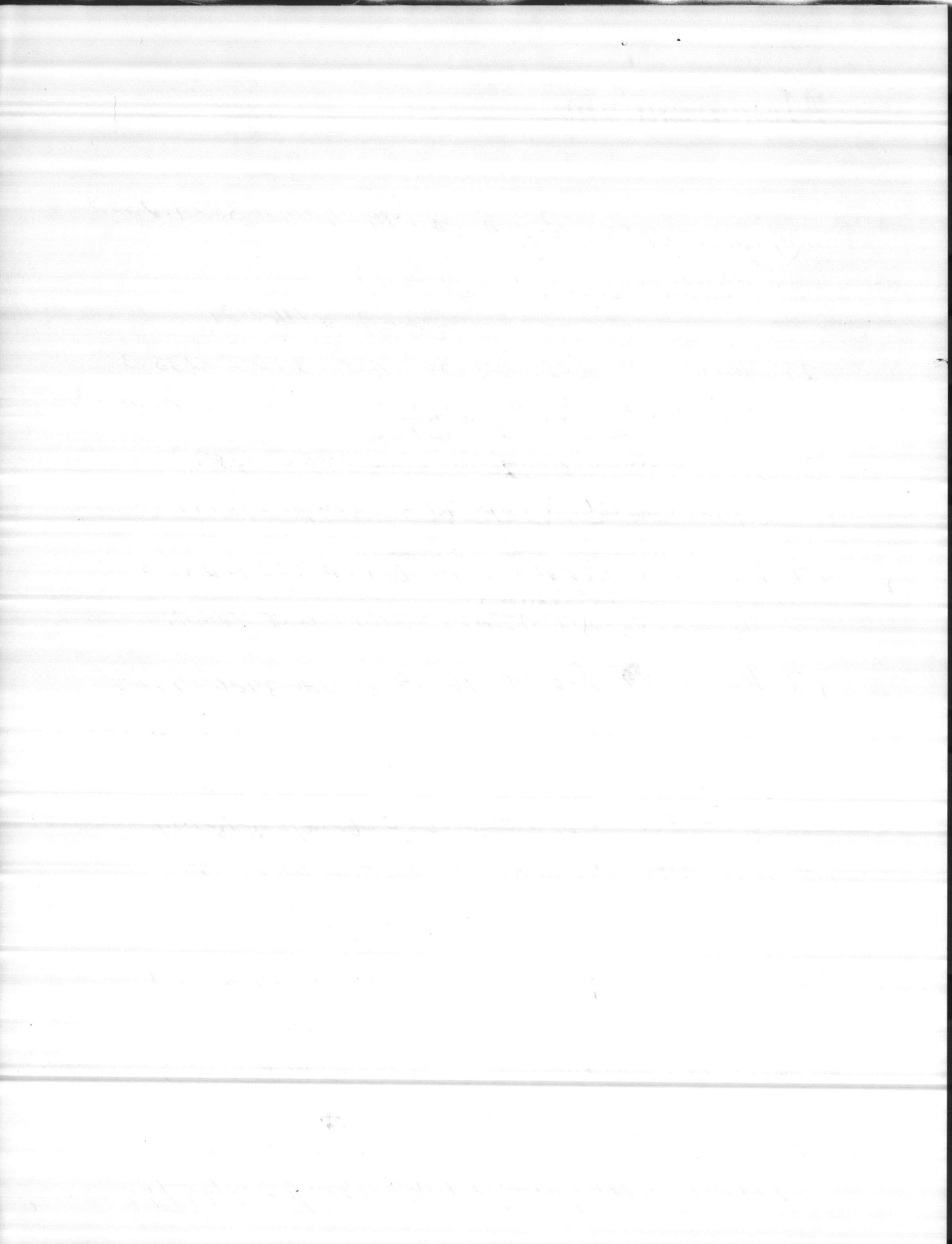
Repair well pump 638 Comp. —

12 Jan 1979 Req 68/79 W.O.- 3858-2383

Repair well pump T.T. 31 Comp. —

10 Jan 1979 Req- 65-79 W.O.# 3642-2383

Repair well pump 640 Comp. - 3/15/79



Memorandum

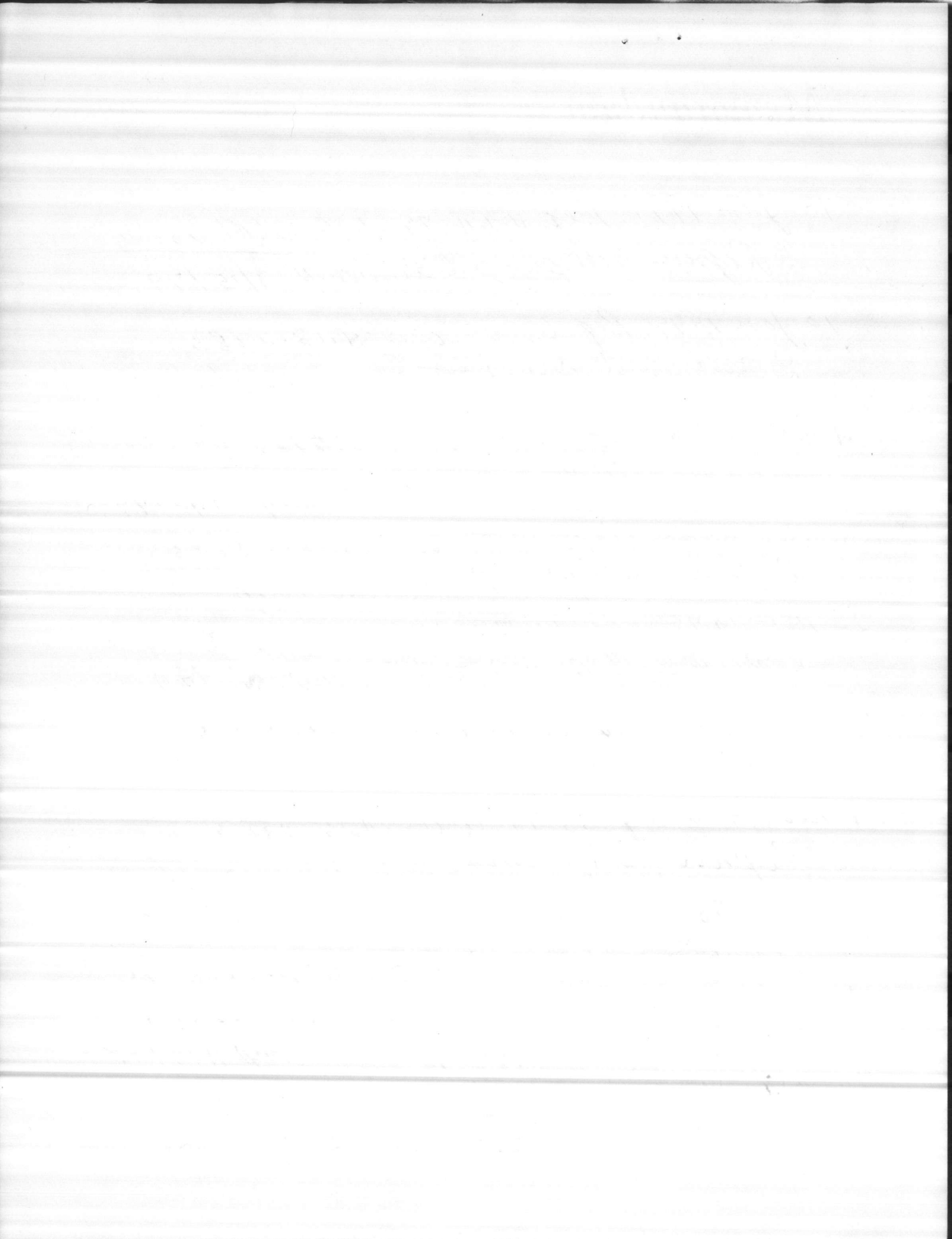
DATE:

FROM

TO

SUBJ

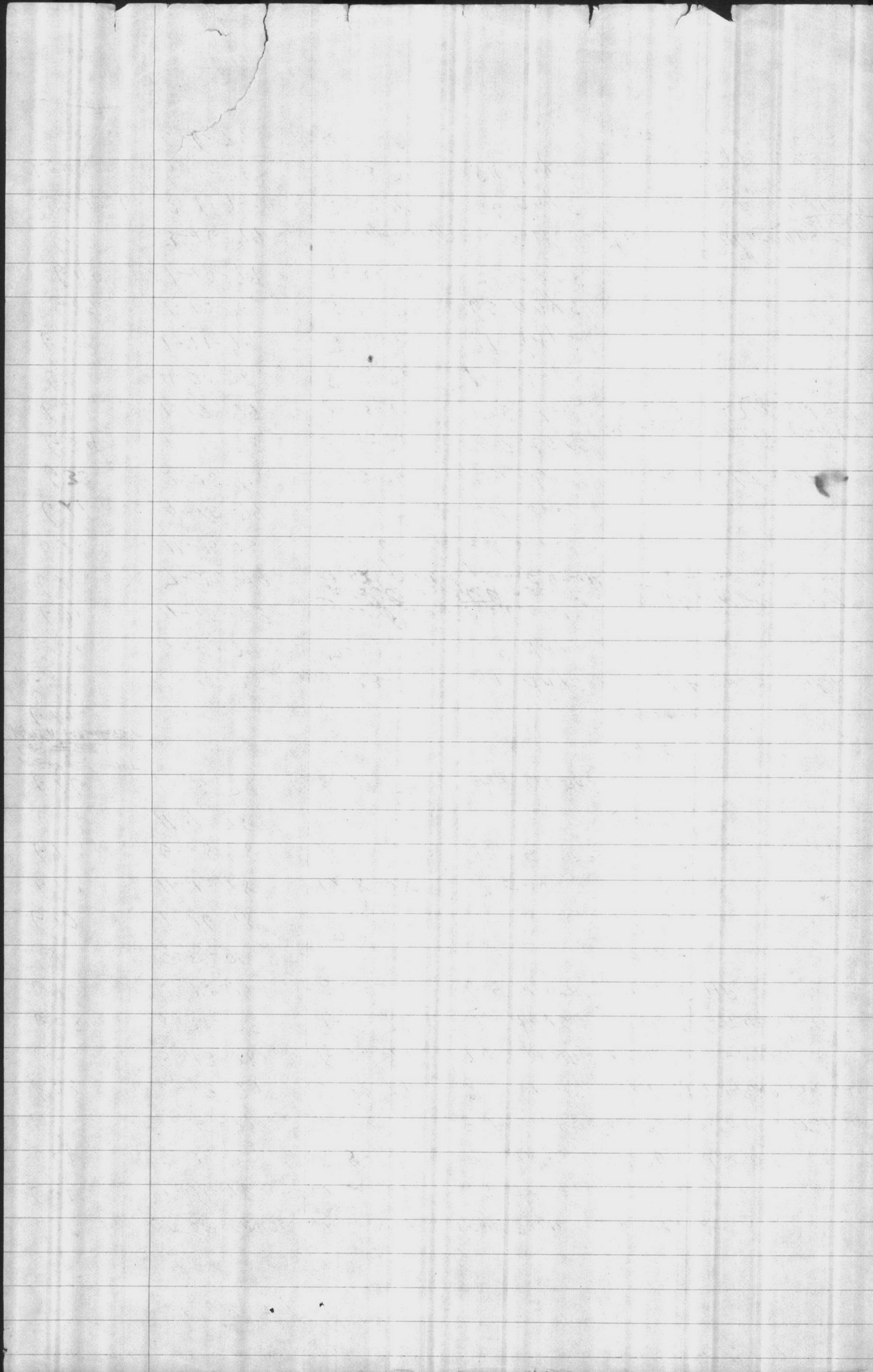
- 10 Jan 1979 Ref # 64-79 W.O. 3641-2383
Repair well pump 639 Comp. 3/15/79
- 10 Jan 1979 Ref 63-79 W.O. 3643-2383
Repair well pump TT-30 Comp. 2/6/79
- 4 Dec. 1978 Ref 48-79 W.O. 3522-2383
Repair well pump RR227 Comp. 1/2/79
- 30 Nov 1978 Ref. 44-79 W.O. 3481-2383
Repair well pump TC 1000 Comp. —
- 20 Nov 1978 Ref 41-79 W.O. 3469-2383
Repair well pump TT-67 Comp. 2/6/79
- 15 Nov 1978 Ref 35-79 W.O. 3439-2383
Repair well pump 621 Comp. 5/6/79
- 9 Nov 1978 Ref 33-79 W.O. 3425-2383
Repair well pump 614 Comp. 12/16/78
- 1 Nov 1978 Ref 29-79 W.O. # 3424-2383
Repair well pump 612 Comp. 12/8/78
- 30 Oct 1978 Ref # 23-79 W.O. 3301-2383
Repair well pump TT 31 Comp. 11/7/78
- 20 Oct 1978 Ref # 15/79 W.O. 3229-2383
Replace elect motor Comp. 10/27/78
RR45



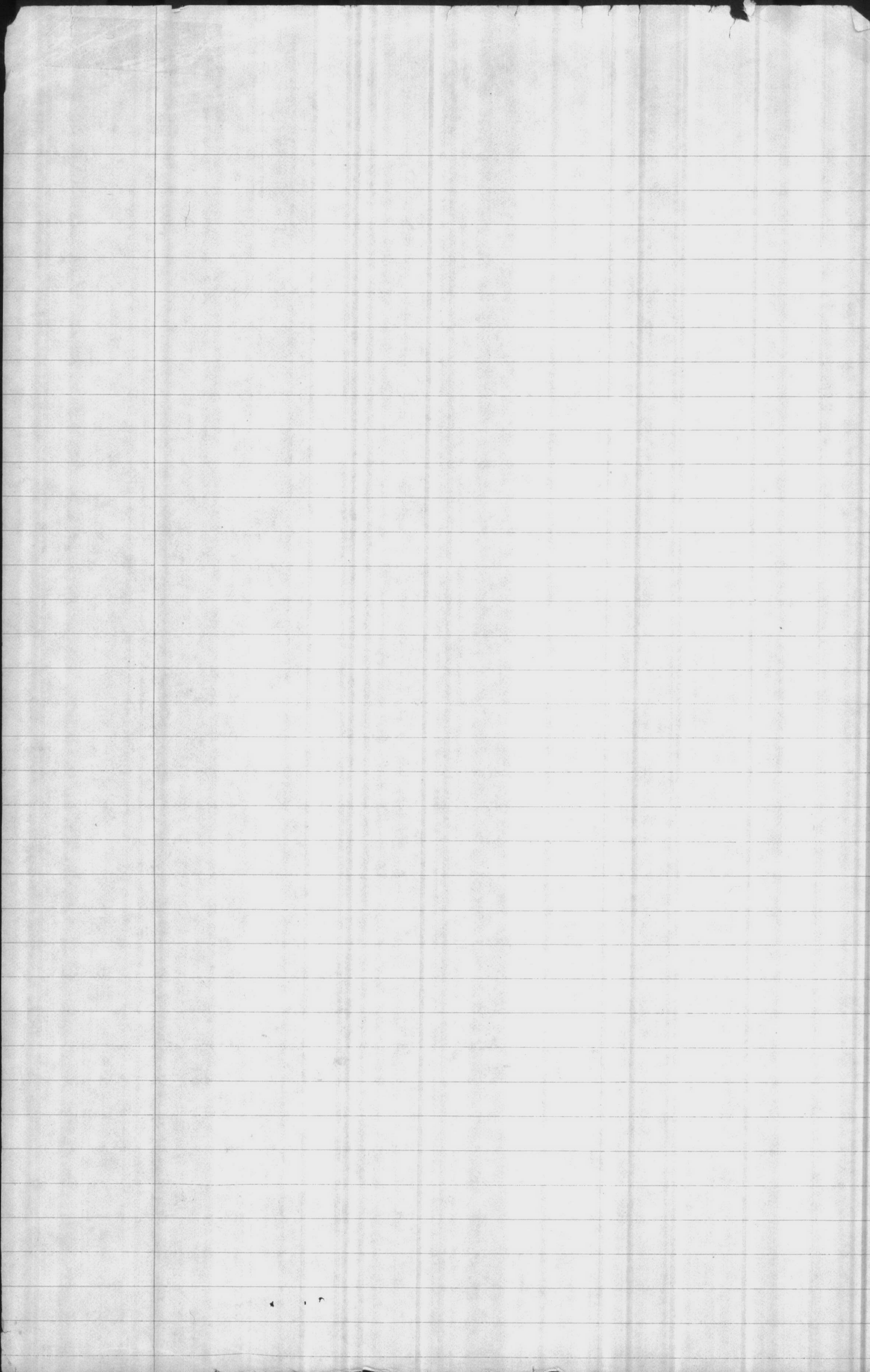
10/2/79

1968 + 1969

Bldg #	OUT OF SERVICE	IN SERVICE	DOWN TIME	REMARKS
601	1-11-78	2-3-78	23 days	
601	5-30-79	7-3-79	35 days	PUMP DROPPED IN WELL
601	7-5-79		3 MONTHS	PUMP DROPPED AGAIN STILL IN
603	6-13-79	8-12-79	2 MONTHS	RELOCATED NEW PUMP FROM 621
608	3-13-78	6-20-79	1Y 3 MONTHS	NEW PUMP + MOTOR
608	8-31-79	9-19-79	20 days	MOTOR BURNED OUT
610	2-12-79	8-29-79	6.5 MONTHS	NEW PUMP
611	8-7-79			CAVED
612	1-26-78	?		
612	11-1-78	12-8-78	7 days	
613	3-28-78	8-15-79	1Y 5 MONTHS	
614	11-9-78			CAVED
616	1-15-79	5-31-79	4.5 MONTHS	
REMOVED FOR REPAIR				CAVED
				CAVED
620	1-11-79	3-23-79	81 days	FLOOR FLANGE LEAKING
620	5-4-79	7-12-79	70 days	" " "
621	11-15-78	new pump ordered		
621	7-26-79	Tried to install new pump, started jamming at 52' pulled pump back out, casing caved in		
625	11-15-75	well caved in		
627	4-15-79	well caved in		
633	2-28-79	6-13-79	105 days	motor shaft brot
634	4-20-78	6-14-78	57 days	
634	1-17-79	7-13-79	178 days	old pump dropped in well + new pump fished out
636	4-20-78	8-8-78	111 days	
638	1-11-79	3-22-79	71 days	
639	1-10-79	3-15-79	65 days	
640	1-10-79	3-20-79	70 days	
642	3-26-79	new pump on order		it came in with wrong bowl assembly
LCH4006	2-1-79	2-27-79	26 days	to replace airline could not get one in
LCH4006	6-1-79	8-23-79	84 days	
653	5-6-79	8-31-79		new well + pump contractor problem
654				



	OUT OF SERVICE	IN SERVICE	REMARKS
✓ 601	Down 4/27/79		DROPPED IN WELL
✓ 602			
✓ 603	Down 6/78	1/25/79	
✓ 606			
✓ 608	Down 1-79 8-31-79	6-20-79 9-19-79	NEW PUMP & MOTOR ELEC. MOTOR OUT
✓ 609			
610	Pulled 2/12/79	8/29/79	NEW PUMP
611	8/7/79		CAVED
✓ 612			
✓ 613	Down 3/78	8/79	
✓ 614	CAVED		
✓ 615			
616	4/2/79	6/13/79	
617			
619			
✓ 620	1-11-79 5-4-79	3/23/79 7/79	FLANGE LEAKING " "
621	Pulled 7/78		CAVED
625	CAVED		
626			
627	5/15/79		CAVED
632			
633	2/28/79	6/13/79	
✓ 634	Out 1/17/79	7/13/79	SHAFT ON MOTOR BROKEN
635			
✓ 636			
637			
✓ 638	1/11/79	3/22/79	VIB. WORSE THAN BEFORE PULLED
✓ 639	2/20/79	3/15/79	CLEANED
640			
641			
642	3/27/79		NEW PUMP ON ORDER
651			
652			
M-1	2/1/79 6/1/79	2/27/79 8/23/79	SURGES
M-2			



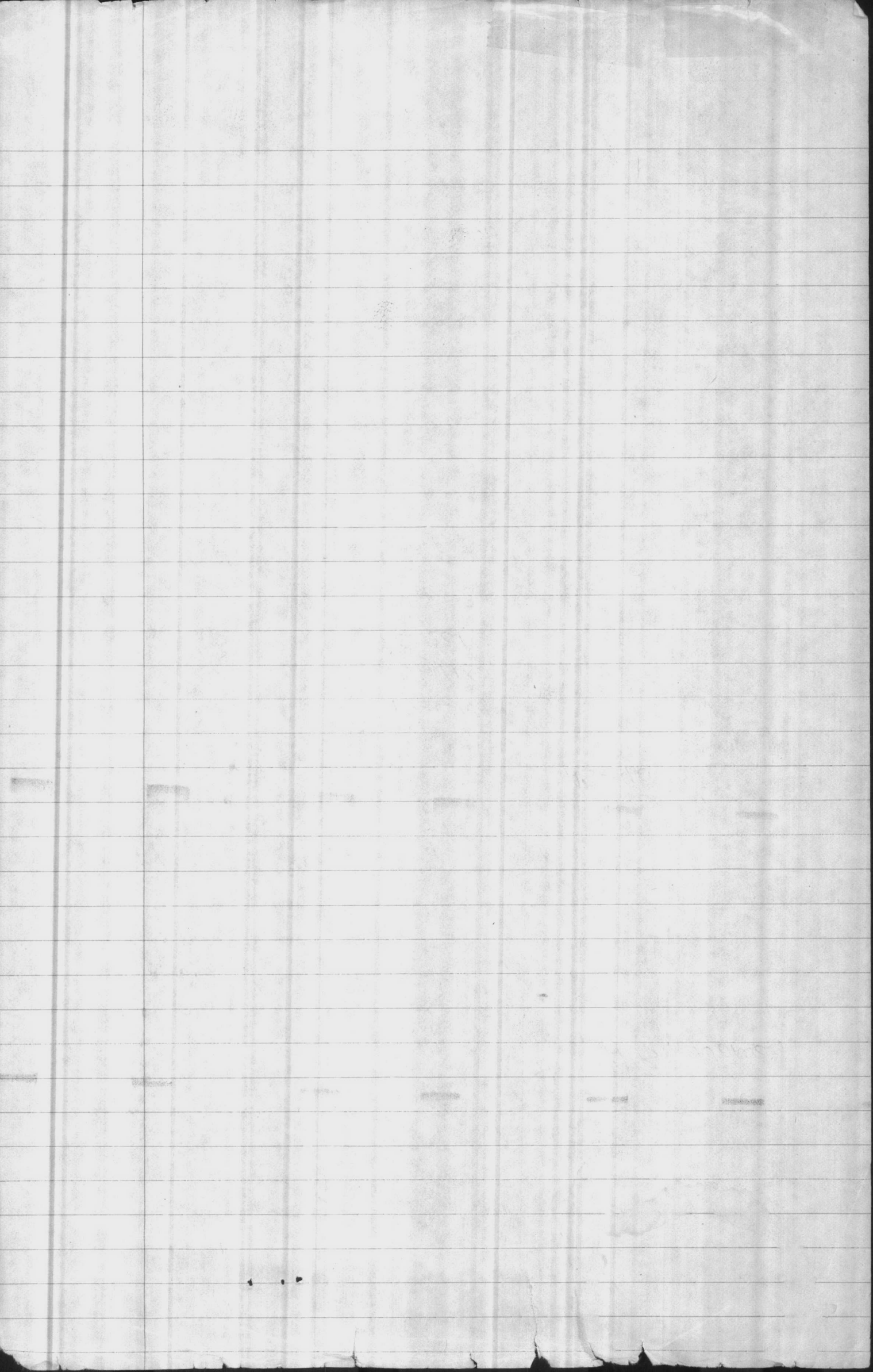
JOHNSON PUMPS

T.T. 53	B.B. 43	M.P. None
T.T. 52	B.B. 44	
T.T. 67		A.B. None
T.T. 54		

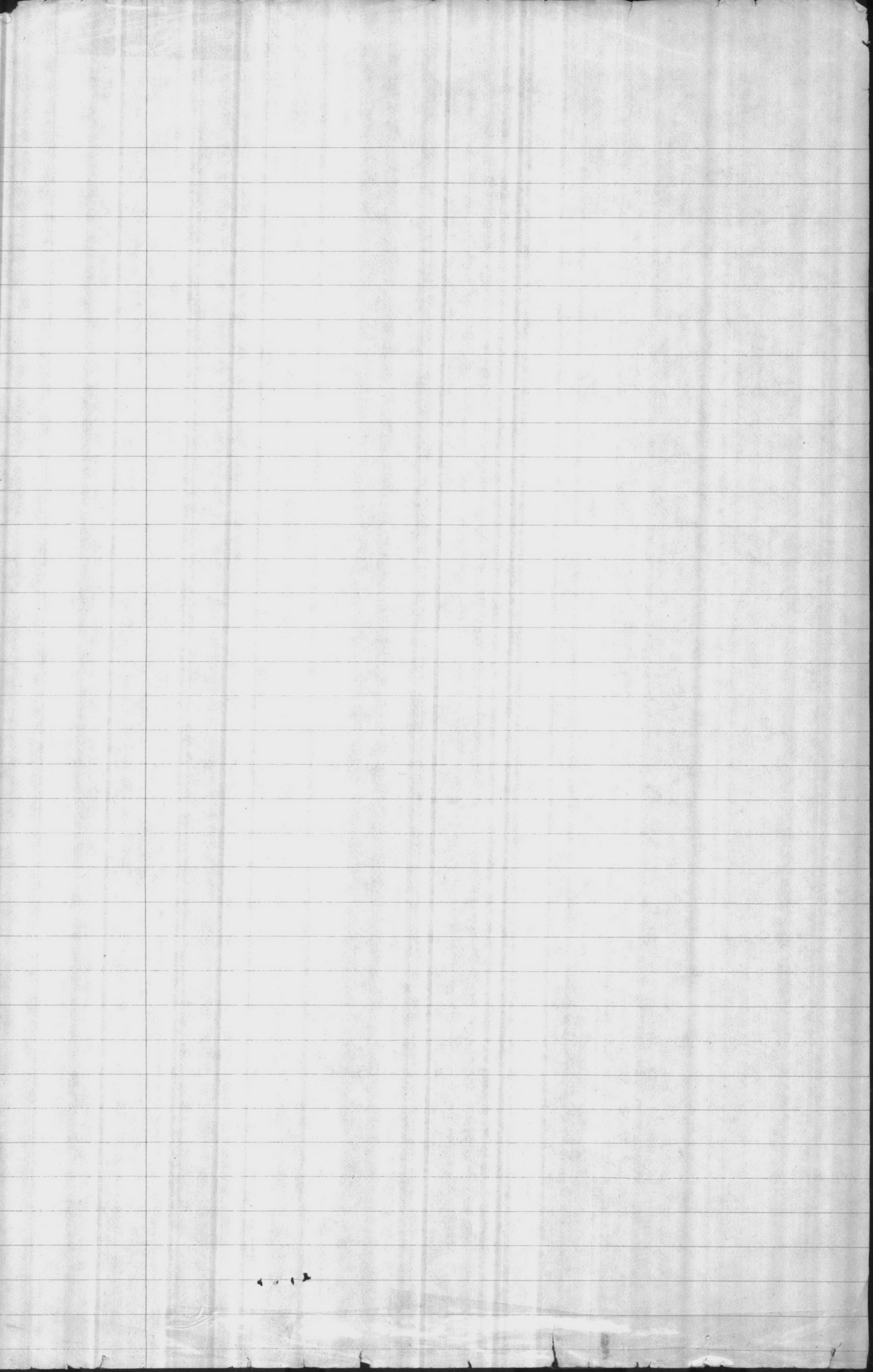
RR. 45 HAS GEAR CASE

H.P.

635	AS-131	STC-1255
636	AS-203	STC-1251
637	TC-502	AS-190
632	TC-700	
637	AS-4140	
639	AS-4150	
640	TC-201	



620. TICKET 322889 - 1-11-79
Repair leaking flange
- 620 - Hook-up Blow off Line # 322890
1-11-79
- 636 1-18-79 - Repair Air Line - # 323398
- LCH4006 1-18-79 - Repair Air Line - # 323441
620. 5-4-79 - Repair leaking flange
308231
- 601 - 5-29-79 - Check well Pump
328798
628. 7-2-79 - Pull elec. Motor, Replace
Bearings - # 332986
- 601 7-5-79 - Check well Pump
332563
603. 8-22-79 - Pull elec. Motor TO
well Pump - # 42070
613. 8-22-79 - furnish Crane TO pull
elec. Motor - # 42071
608. 8-31-79 Pull elec. Motor - # 39968



LIST OF BUILDINGS AND NUMBERS ASSOCIATED AND ASSIGNED TO THE WATER TREATMENT BRANCH

HP-656 - Von Orde fish pond

HADNOT POINT - BLDG. 20- WATER TREATMENT PLANT

WELLS

- HP-601 ✓
- HP-602 ✓
- HP-603 ✓
- HP-606 ✓
- HP-608 ✓
- HP-609 ✓
- HP-610 ✓
- HP-611 ✓
- HP-612 ✓
- HP-613 ✓
- HP-614 ✓
- HP-615 ✓
- HP-616 ✓
- [REDACTED]
- [REDACTED]
- HP-620 ✓
- [REDACTED]
- [REDACTED]
- [REDACTED]
- HP-632 ✓
- HP-633 ✓
- HP-634 ✓
- HP-635 ✓
- HP-636 ✓
- HP-637 ✓
- HP-638 ✓
- HP-639 ✓
- HP-640 ✓
- HP-641 ✓
- HP-642 ✓
- HP-651 ✓
- HP-652 ✓

covered

covered

VL-184 - *advance disposal at Verona loop*
 SUL-201 well house

H.P. (653) ✓ (619) old
 H.P. (654) ✓ (617) old
 H.P. 655 ✓ (625) old

M-1 LCH-4006
 611-
 612-
 614-
 621-
 626-
 627- }

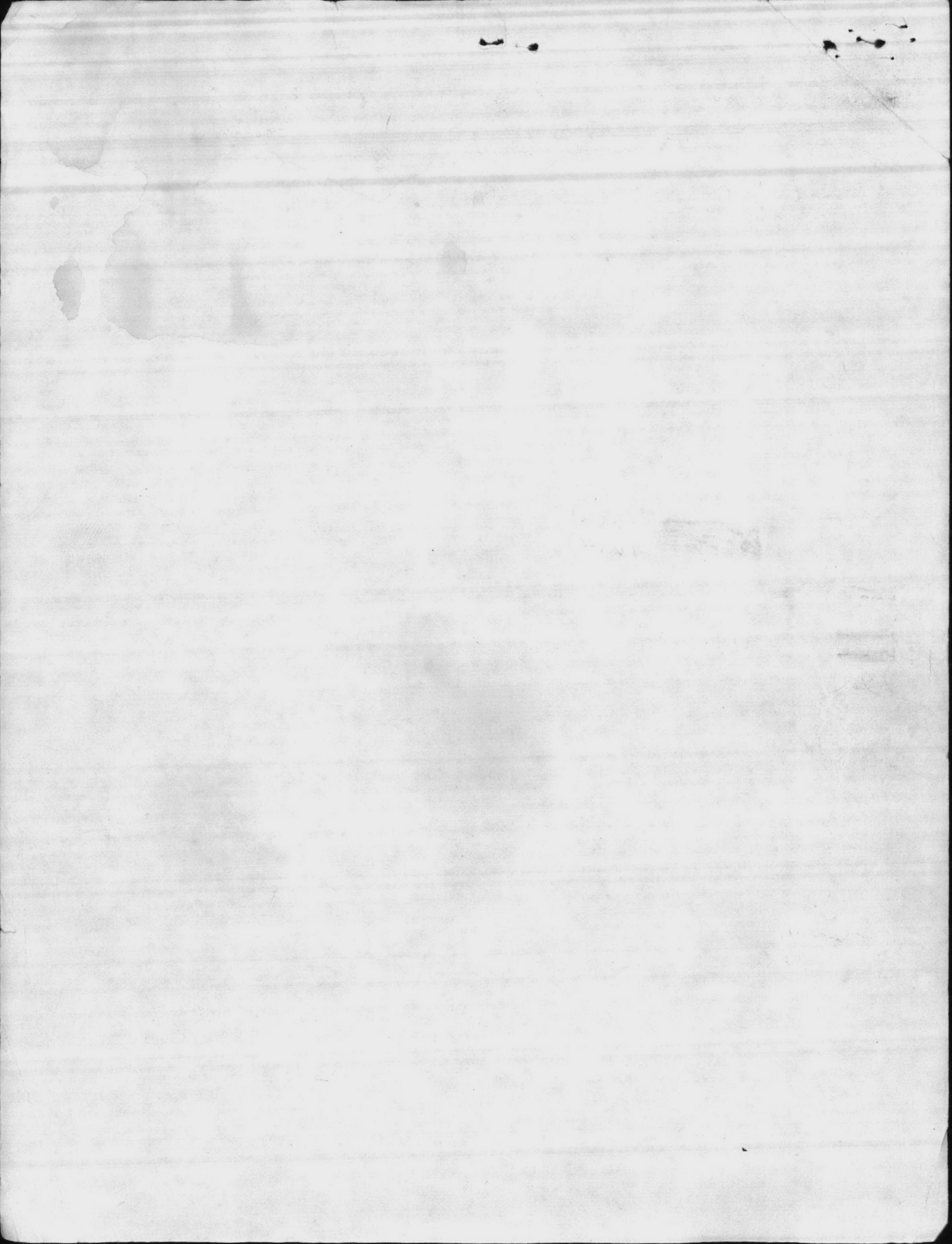
NEW WELLS Replacement for these old Bldg #

*P.D. Pool - S.2632
 "Baby" - S.2631*

- LCH-4006 Mx
- LCH-4007 Mx
- HP-742 BOOSTER PUMP
- HP-42 WORK SHOP
- HP-38 EMERGENCY PUMPING STATION

HP-656 - Von Orde fish pond

HP S-256 - Backwash PITS AT #2 + #5 Pools
 S-563 -



HOLCOMB BLVD - BLDG. HP-670 - WATER TREATMENT PLANT

WELLS

~~HP-643~~ 7
~~HP-644~~ 6
~~HP-645~~ 5
~~HP-646~~ 8
~~HP-647~~ 1
~~HP-648~~ 2
~~HP-649~~ 3
~~HP-650~~ 4

TARAWA TERRACE - BLDG. TT-38 - WATER TREATMENT PLANT

WELLS

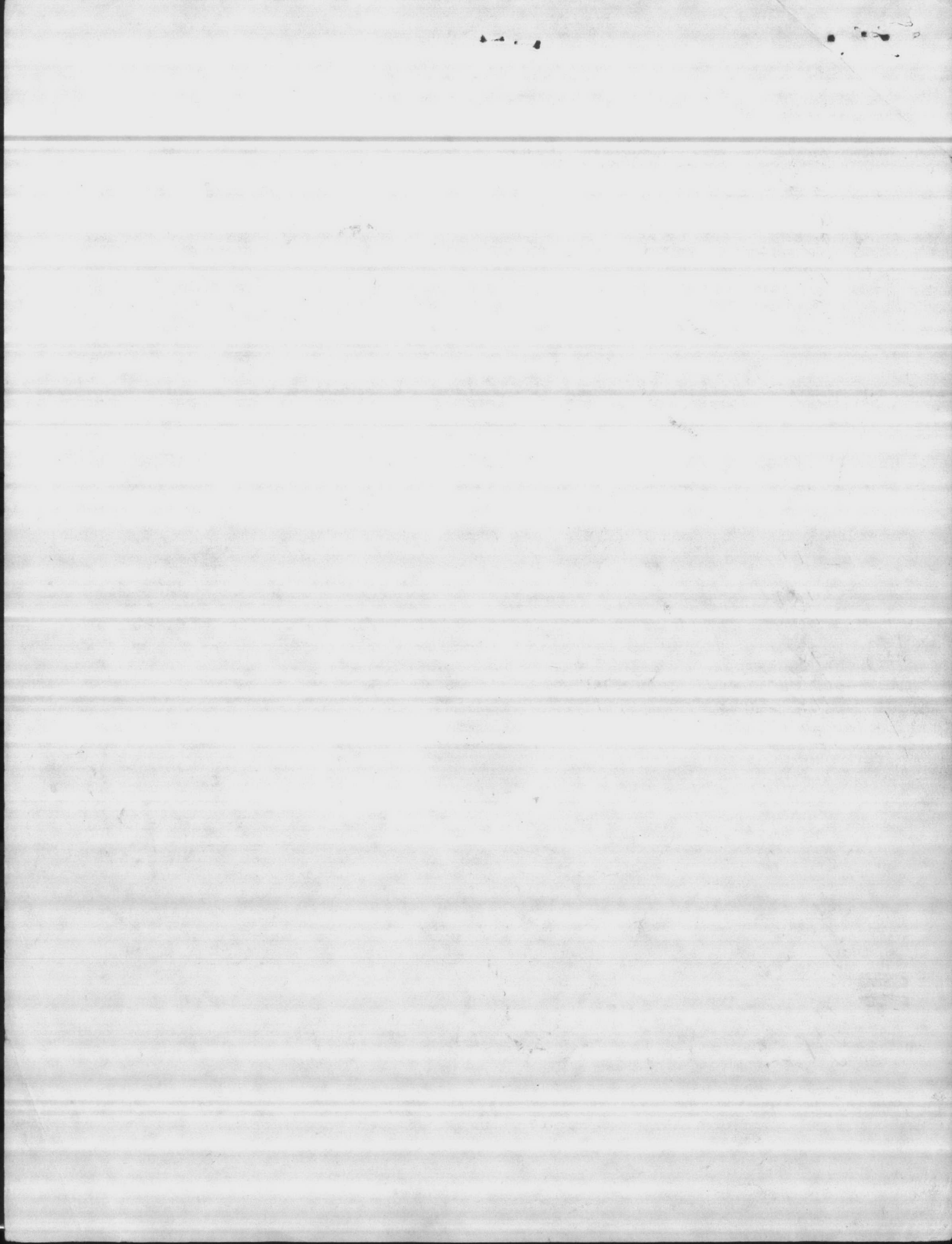
~~TT-25~~
~~TT-26~~ 1
~~TT-27~~
~~TT-28~~
~~TT-29~~ 13
~~TT-30~~ 14
~~TT-31~~
~~TT-32~~
~~TT-33~~ 9
~~TT-34~~ 10
~~TT-35~~ 11
~~TT-36~~
~~TT-37~~ 12
~~DD-39~~ BOOSTER PUMP
STT-39-A

MONTFORD POINT - BLDG. M-178 - WATER TREATMENT PLANT

WELLS

M-142 ✓
M-168 ✓
M-197 ✓
 ✓ covered

M-628 ✓
M-629 ✓
M-630 ✓
M-267 ✓



CAMP GEIGER - BLDG # 50^{TC-} - WATER TREATMENT PLANT Pump. Sta.

WELLS

- TC-100 B ✓
- TC-104 A ✓ CHLORIDES TO HIGH
- TC-201 H ✓
- ~~TC-202~~ ✓ TC-325
- TC-502 D ✓
- TC-504 J ✓
- TC-600 E ✓
- TC-604 K ✓
- TC-700 F ✓ NEW PUMP 10-27-77
- TC-901 G ✓
- TC-1000 L ✓
- TC-1001 M ✓

- SAS-713 - POND (BACKWASH)
- AS-709 - O'cler Pool
- AS-202 - E " "

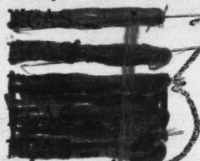
~~WELLS~~

- TC-501 PUMPING PLANT
- ~~STC-619 BRINE STORAGE TANK AND PUMP HOUSE~~

MARINE CORPS AIR STATION - BLDG. 110^{MCAS} WATER TREATMENT PLANT

WELLS

- MCAS-106 (4) ✓
- MCAS-131 (5) ✓
- MCAS-203 (6) ✓
- MCAS-210 (2) ✓ caved - TORN Down
- MCAS-1002 (4) ✓ caved - TORN Down in Housing
- MCAS-3506 (9) ✓ - MAX 5 - TAPPED INTO P.L. -
- MCAS-4140 (10) ✓
- MCAS-4150 (11) ✓
- MCAS-5001 (7) ✓
- MCAS-5009 (8) ✓
- MOQ STATION-2002 ✓



NEW UNDER CONSTRUCTION - NO BLDG #'S

New Raw Water Pumping Sta. 1252
R.R.

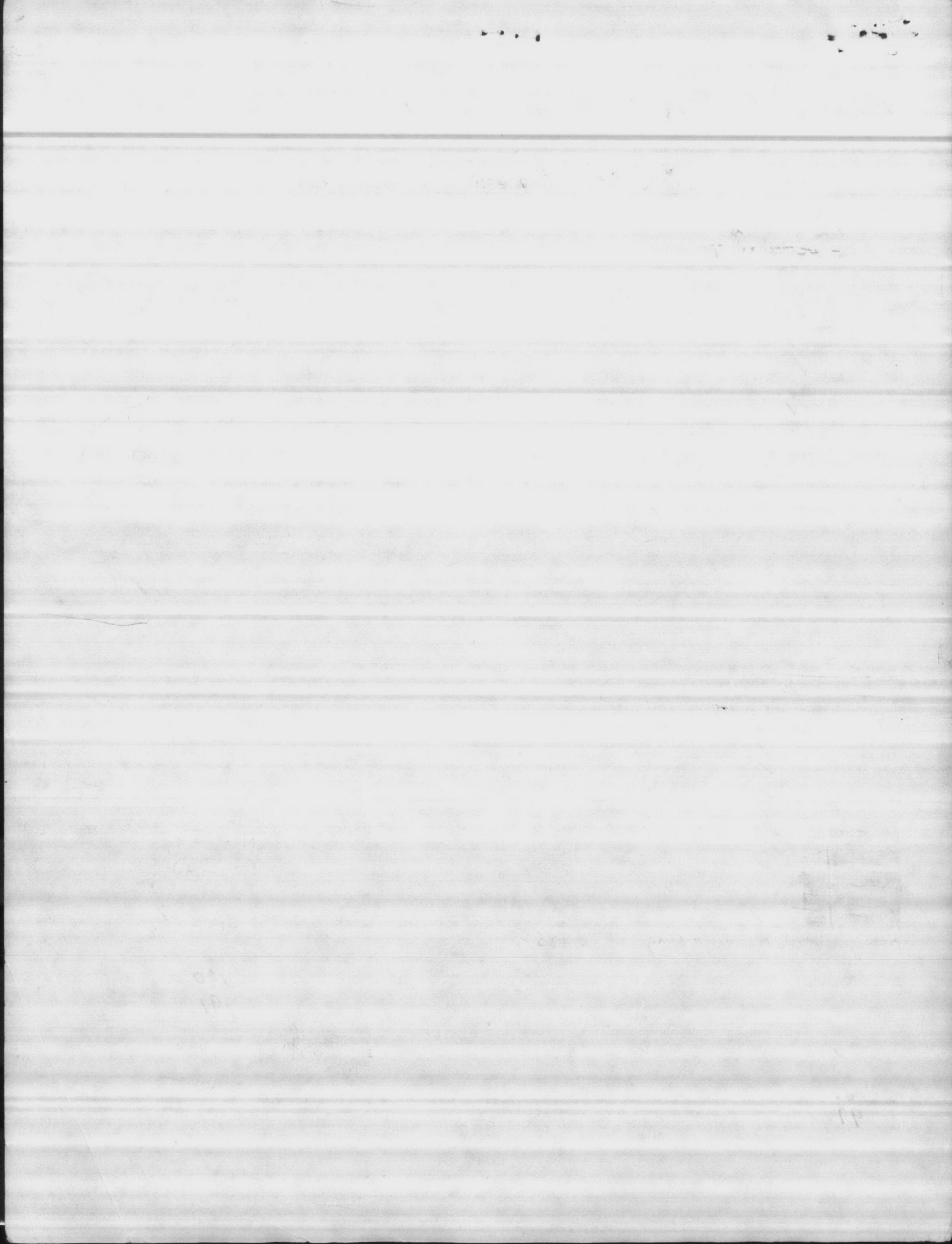
- N-1256 - STC
- O-1255 - STC
- P-1254 - STC
- Q-1253 - STC
- R-1251 - STC
- S-190 - TC
- T-191 - TC

RIFLE RANGE - BLDG. 85 - WATER TREATMENT PLANT

WELLS

- RR-45 ✓
- RR-47 ✓
- ~~RR-48~~ ✓
- RR-97 ✓
- RR-227. Replaced this well

SRR-102 - Backwash Holding Tank



COURTHOUSE BAY - BLDG. 190 - WATER TREATMENT PLANT

WELLS

BB-188 - Backwash Holding Tank

~~BB-43~~ ✓ NEW WELL

BB-44 ✓

BB-97 ✓ - Demo Range

BB-220 ✓

BB-221 ✓

A-5 ✓

A-4 - TANKS

ONSLow BEACH - BLDG. 138 - WATER TREATMENT PLANT

WELLS

BA-164 ✓

BA-190 ✓

