

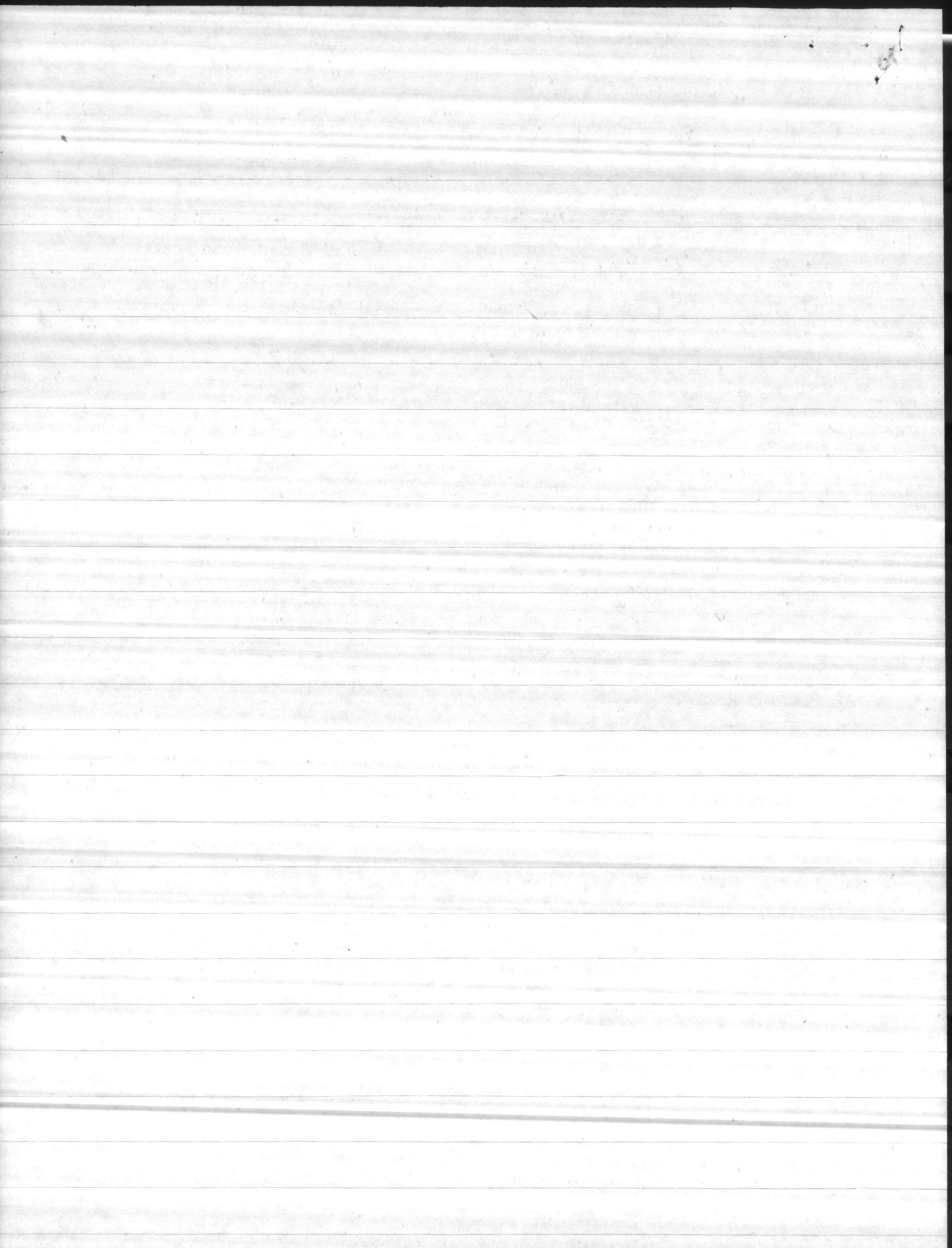
WELL HP 610

8-28-79

50' AIRLINE

STATIC 21'

PL	PSI	GPM	
42	22	80	EST
45	20	88	EST
48	18	102	



WELL #

610

LENGTH OF AIR LINE

STATIC LEVEL

PUMPING LEVEL

DRAW DOWN

DISCHARGE PRESSURE

CAP. PER FOOT OF DRAW DOWN

TOTAL CAP.

DATE

1-17-79

50'

10' 40"

22

0

3' 47"

18

8

0'

8

162

0'

14

96

0'

17

12

REMARKS:

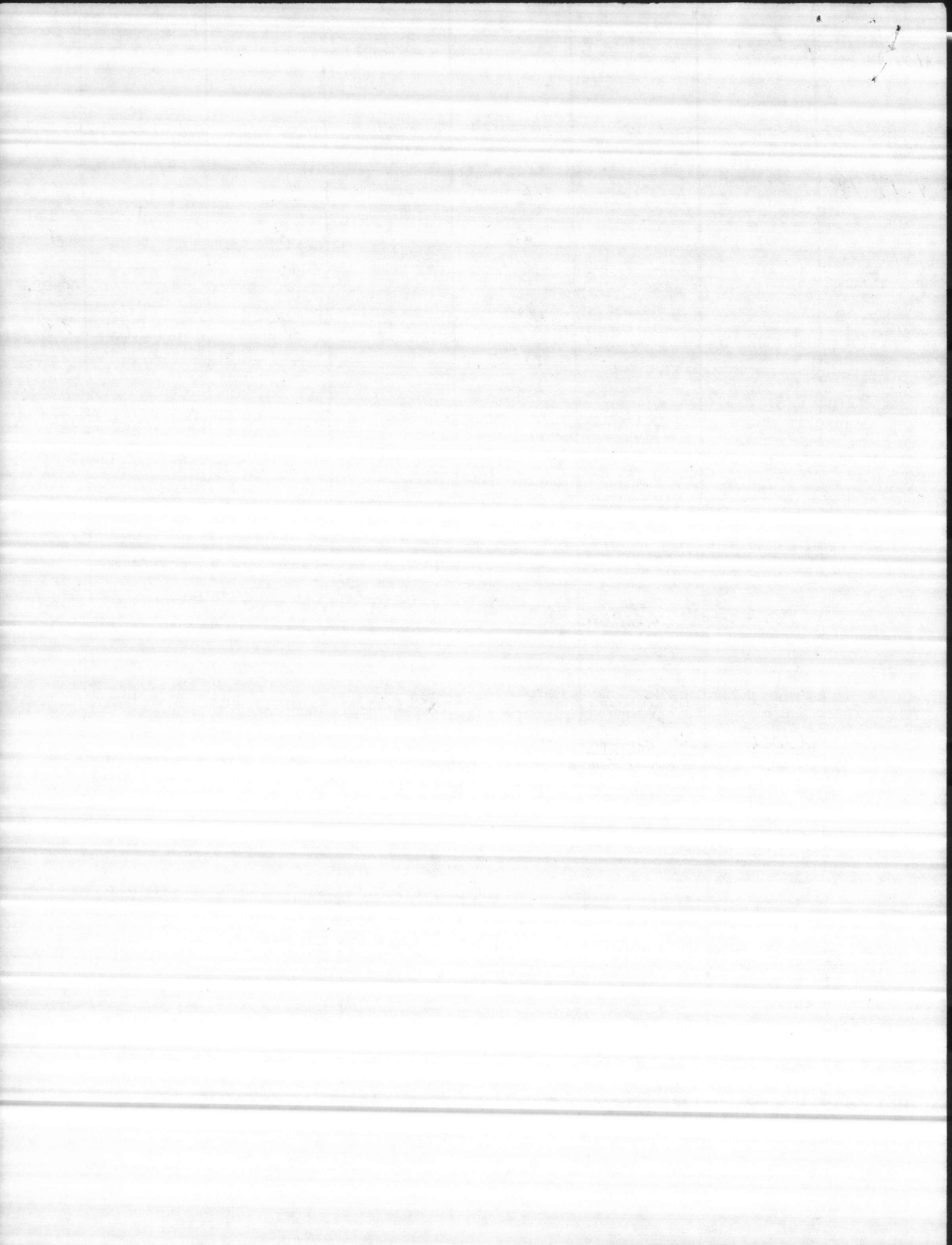
Pumping gun + sand at 8 lbs

Water cleared at 14 lbs

well dirty

DEPTH OF WELL:  
AIRLINE  
ELEVATION:  
DATE  
INSTALLED:











HAD NOT POINT BLD. 20

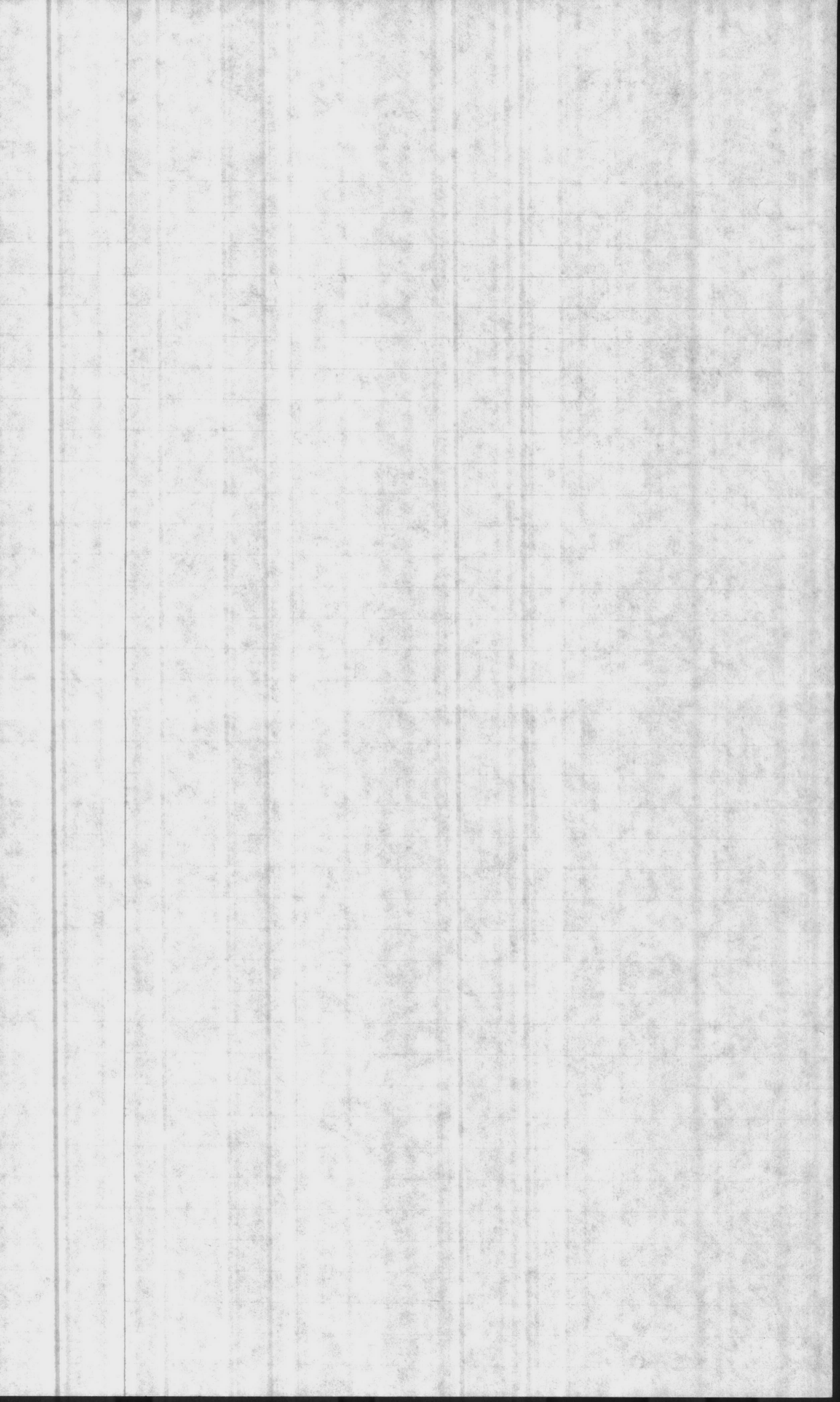
- CAPACITY OF 5 MGD  
WITH 35 RAW WATER DEEP WELLS
- LIME SOFTENING PLANT
- HAS A 800,000 GAL RAW WATER RESERVOIR  
WITH A PUMPING CAPACITY OF 10,500 GPM  
WITH 3 PUMPS
- HAS A TOTAL OF 2.5 MG TREATED WATER  
RESERVOIRS.  
WITH A PUMPING CAPACITY OF 7,500 GPM  
WITH 4 HIGH LIFT PUMPS
- HAS 4 ELEVATED STORAGE TANKS WITH A TOTAL  
CAPACITY OF 1.2 MG

SWIMMING POOLS

- HAS 4 OUTDOOR POOLS
  - (1) 188,000 gallon
  - (2) 290,000 gallon
  - (3) 288,000 gallon
  - (4) 110,000 gallon

- HAS (3) INDOOR POOLS
  - (3) 440,000 gallon pools





## MARINE CORPS AER STATION - 110

- CAPACITY OF 3.5 MGD  
WITH 26 RAW WATER DEEP WELLS
- LIME SOFTENING PLANT
- HAS 2 RAW WATER BOOSTER PUMPS WITH A  
CAPACITY OF 4800 GPM
- HAS A TOTAL 425,000 GAL TREATED WATER  
RESERVOIRS
  - HAS 3 TREATED WATER BOOSTER  
PUMPS WITH A CAPACITY OF 1850 GPM
  - HAS 3 HIGH LIFT PUMPS WITH A  
CAPACITY OF 2500 GPM

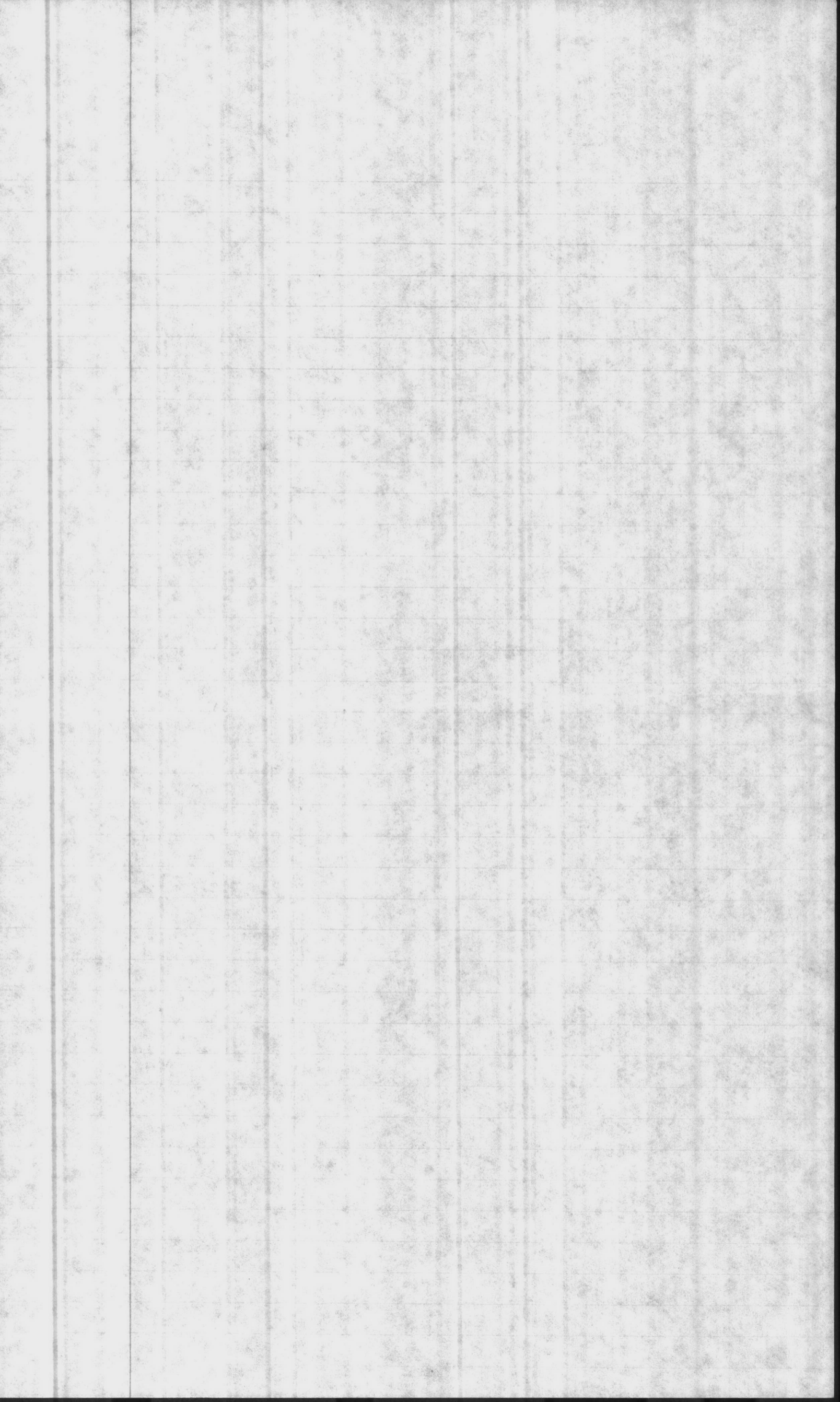
### MOQ 2002 AREA

- HAS A 300,000 GAL STORAGE EMERGENCY RESERVOIR  
HAS 4 EMERGENCY PUMPS WITH A  
CAPACITY OF 1,000 GPM
- HAS 2 ELEVATED STORAGE TANK WITH A  
TOTAL CAPACITY OF 650,000 GAL.

### CB AREA

- HAS 2 TREATED WATER RESERVOIRS WITH A  
CAPACITY OF 872,000 GAL  
HAS 3 HIGH LIFT PUMPS WITH  
A CAPACITY OF 2,100 GPM
- HAS 2 ELEVATED STORAGE TANKS WITH A  
TOTAL CAPACITY OF 200,000 GALS





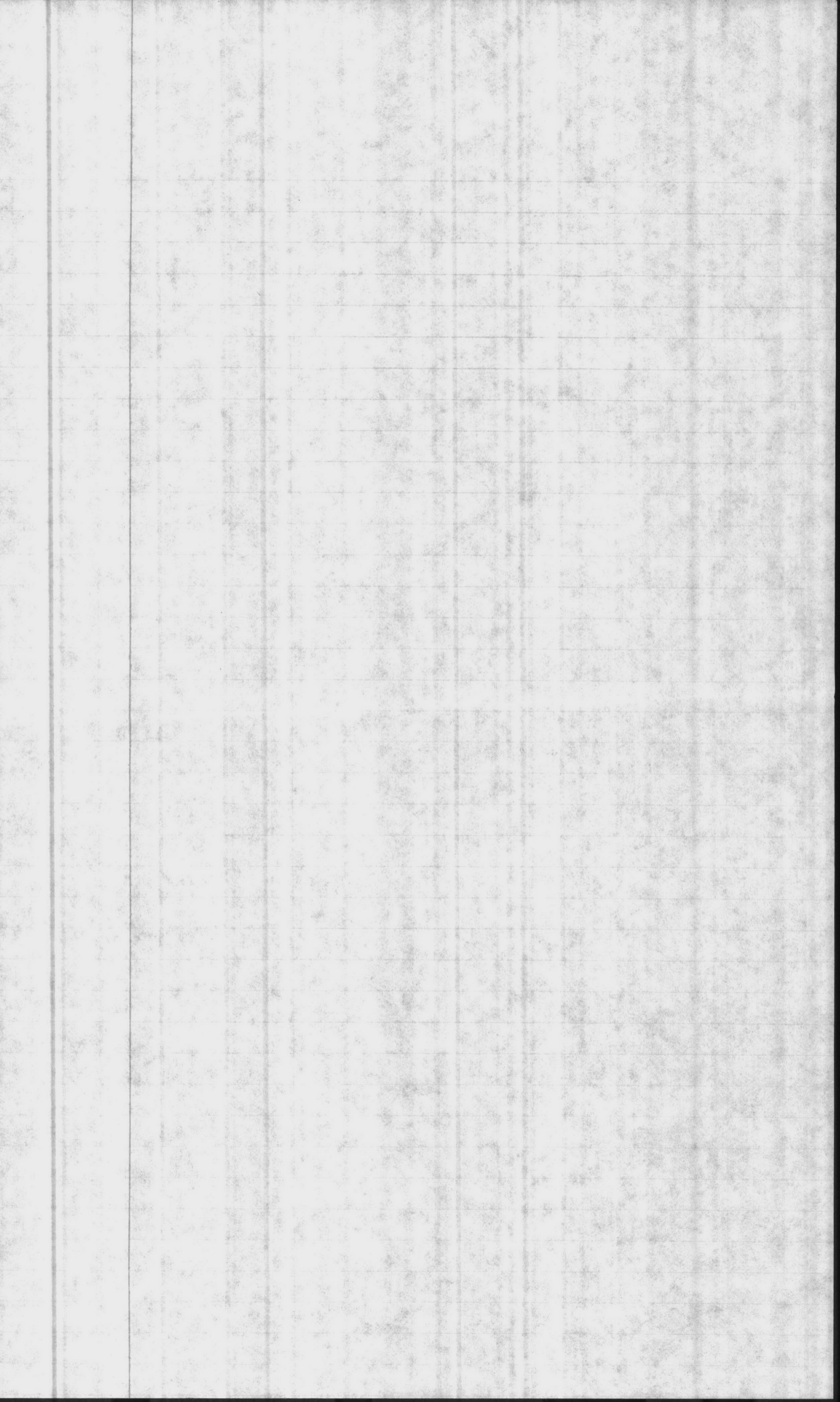


COURTHOUSE BAY BLD BB-190

- CAPACITY OF 600,000 GPD  
WITH 5 RAW WATER DEEP WELLS
- ZEOLITE SOFTENING PLANT
- HAS A DETENTION TANK WITH AN AERATOR
- HAS 6 PRESSURE FILTER WITH A CAPACITY OF 90.6 GPM
- HAS 4 ZEOLITE SOFTENERS WITH A CAPACITY OF 102 GPM
- HAS A 350,000 GAL TREATED WATER RESERVOIR  
WITH 3 HIGH LIFT PUMPS WITH A  
TOTAL CAPACITY OF 1750 GPM
- HAS A 100,000 GAL STORAGE ELEVATED TANK  
HAS (1) 325,000 GAL STORAGE ELEVATED  
TANK IN THE AMPH. AREA

ONSLOW BEACH BLD BA-138

- HAS A CAPACITY OF 250,000 GPD.  
WITH 2 RAW WATER DEEP WELLS
- ZEOLITE SOFTENING PLANT
- HAS TWO 37 GPM PRESSURE
- HAS TWO 75 GPM ZEOLITE SOFTENERS
- HAS A 250,000 GAL TREATED WATER RESERVOIR  
HAS 3 HIGH LIFT PUMPS WITH A  
CAPACITY OF 2050 GPM TOTAL
- HAS 1 ELEVATED STORAGE TANK WITH A  
CAPACITY OF 100,000 GAL

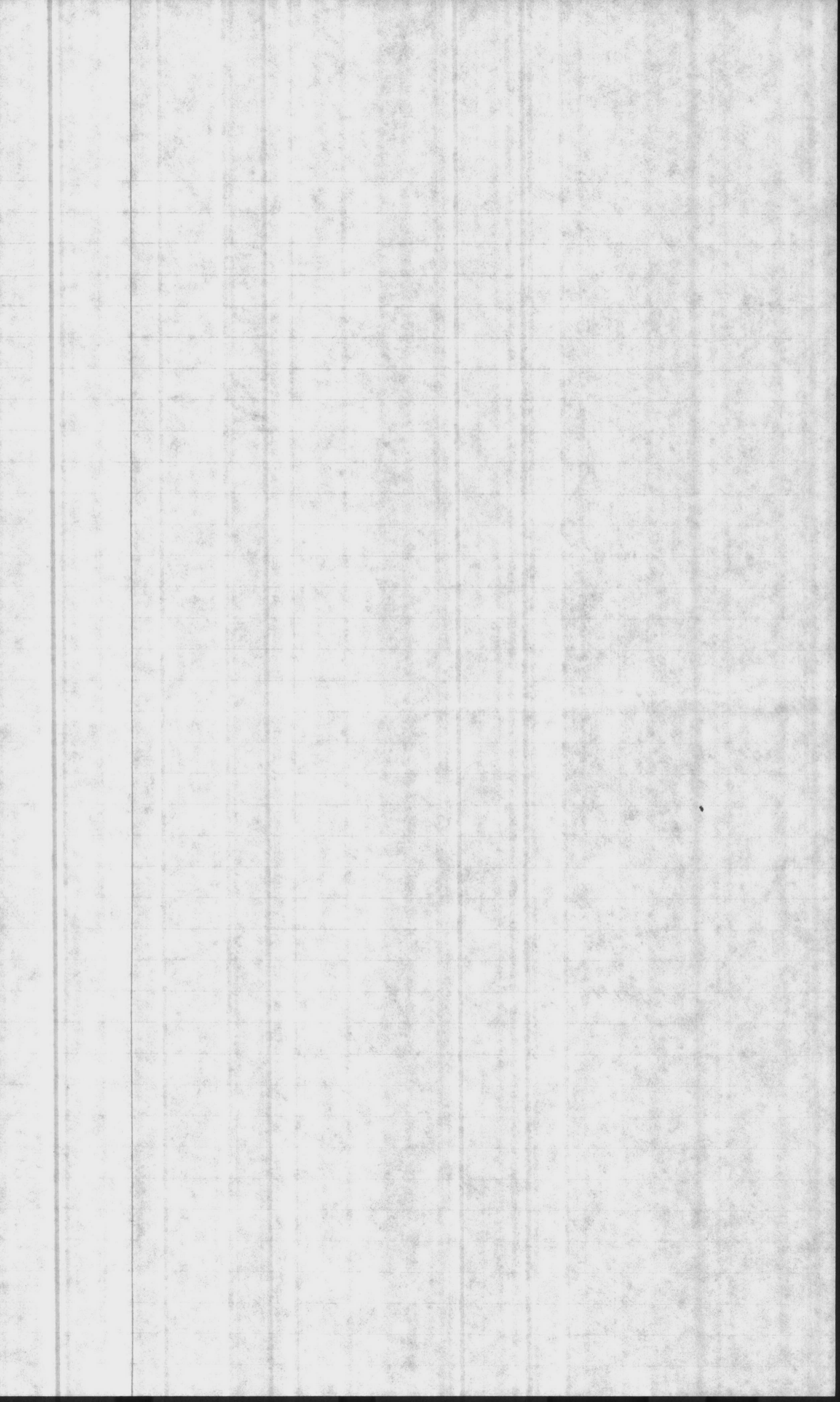




RIFLE RANGE - BLD RR -85

- CAPACITY OF 600,000 GPD  
WITH 4 RAW WATER DEEP WELLS
- ZEOLITE SOFTENING PLANT
- HAS A DETENTION TANK WITH AN AERATOR
- HAS 3 PRESSURE FILTERS WITH A CAPACITY OF 134 GPM
- HAS 2 ZEOLITE SOFTENERS WITH A CAPACITY OF 128 GPM
- HAS A 350,000<sup>GAL.</sup> TREATED WATER RESERVOIR  
WITH 3 HIGH LIFT PUMPS WITH A  
TOTAL CAPACITY OF 1250 GPM.
- HAS A 100,000 GAL. ELEVATED STORAGE TANK

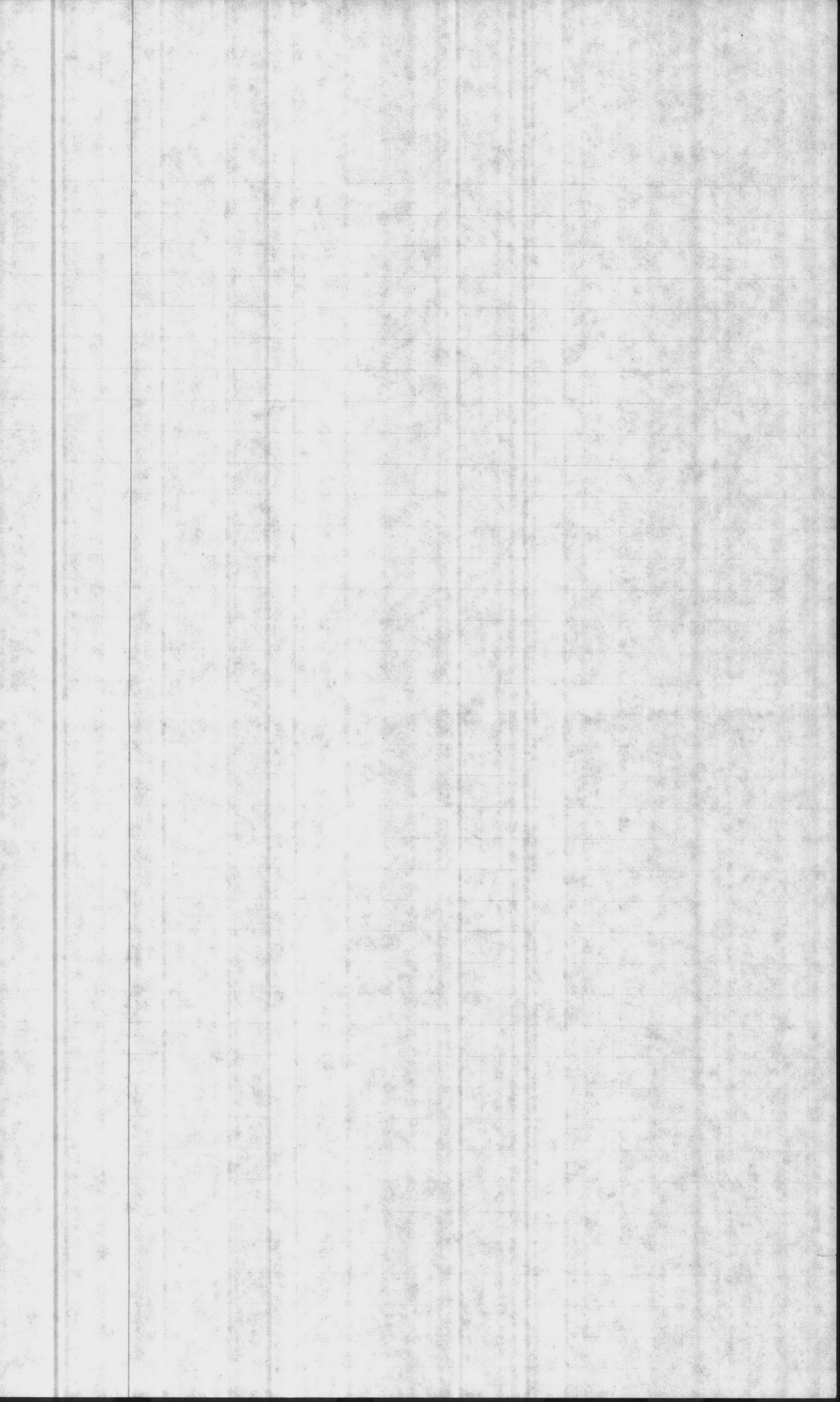




## HADNOT POINT BLD 20

- CAPACITY OF 5 MGD WITH 35 DEEP WELL
- LIME SOFTENING PLANT
- HAS A RATED CAPACITY OF PRE-CHLORINATION OF 0-100 LBS PER 24 HRS. PER (2) CHLORINATOR EA.
- HAS A 800,000 GALLON RAW WATER RESERVOIR WITH (3) RAW WATER BOOSTER PUMPING CAPACITIES OF 2800 GPM, 3500 GPM, + 4200 GPM = Total
- HAS TWO LIME MIXING TANKS WITH A DAY STORAGE OF 10 TONS EACH  
HAS A LARGE LIME STORAGE SILO OUTSIDE OF BLD 20 OF 60 TON.
- HAS SIX LIME PUMPS WITH A CAPACITY OF 245 GPH EACH
- HAS FIVE SPIRATORS WITH A RATE OF 700 GPM OF WATER RUNNING THROUGH EACH.
- HAS A SETTLING + RECARBINATION PIT TO HELP MONITOR PH OF WATER
- HAS FIVE RAPID SAND FILTERS WITH A RATE 700 GPM EACH
- HAS TWO FINISHED TREATED WATER RESERVOIRS ONE WITH A CAPACITY OF 500,000 GALS + THE OTHER OF 2,000,000 GALS.
- HAS FOUR HIGH LIFT DISTRIBUTION PUMPS WITH A RATE 1500 GPM FOR (3) HIGH LIFT PUMPS + (1) OF 3000 GPM.
- HAS FOUR ELEVATED STORAGE TANKS [S-5, S-29, S-1000, SFC-314]
- HAS ONE FILTER BACKWASH PUMP WITH A RATE OF 6300 GPM
- HAS A 275 KW EMERGENCY GENERATOR
- HAS A BACKWASH HOLDING PIT
- HAS A FLOCCULATION SYSTEM TO MAINTAIN APPROX. 1 PPM







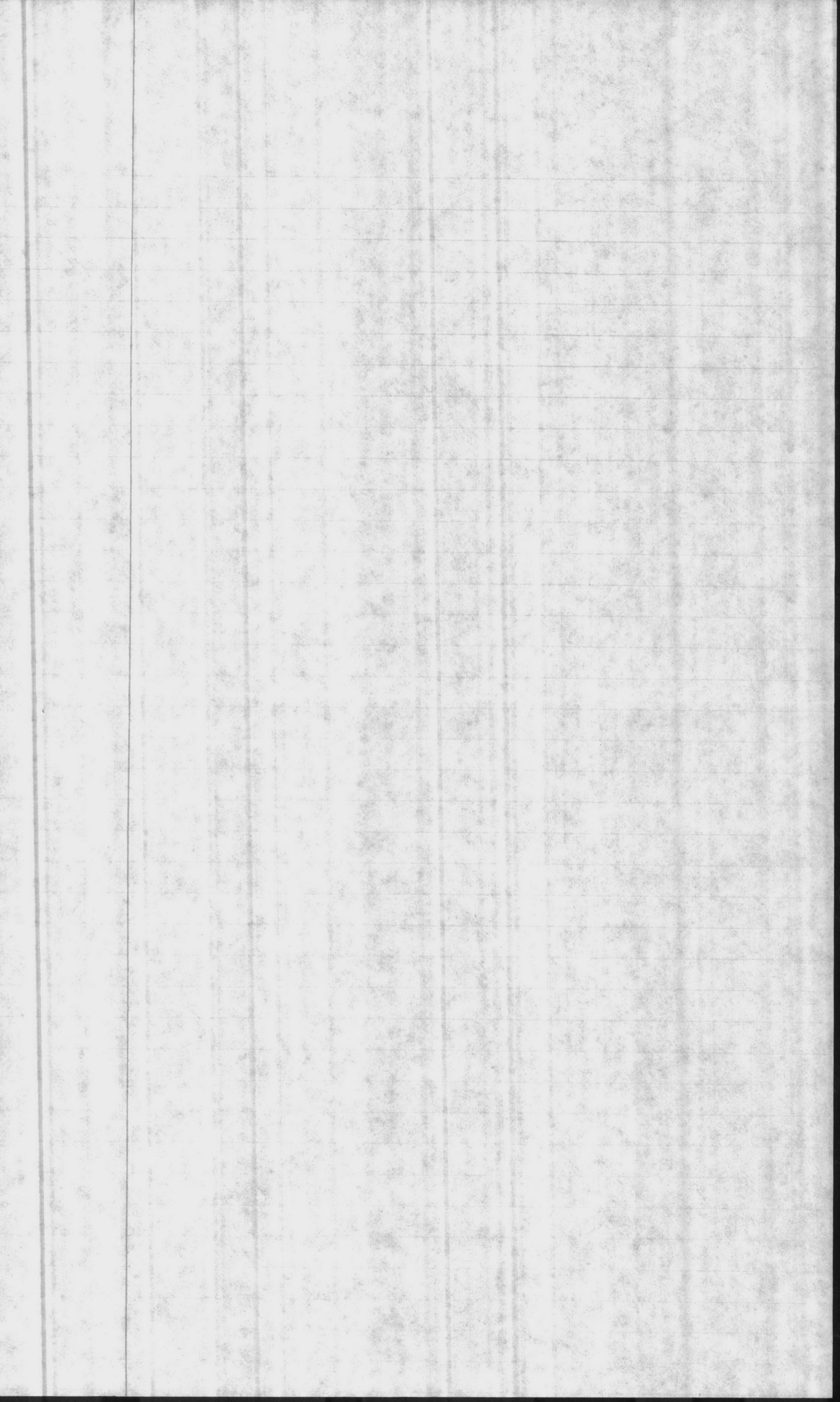
## HB - 670

- CAPACITY OF 5 MGD  
WITH 18 RAW WATER DEEP WELLS
- LIME SOFTENING PLANT
- HAS A 2 MG RAW WATER RESERVOIR  
WITH A PUMPING CAPACITY OF 7,000 GPM  
WITH 4 PUMPS
- HAS A TOTAL OF 3 MG TREATED WATER  
RESEVOIRS  
WITH A PUMPING CAPACITY OF 13,500 GPM  
WITH 8 HIGH LIFT PUMPS
- HAS 3 ELEVATED STORAGE TANKS WITH  
A TOTAL CAPACITY OF 700,000 GAL

### UNAPPORTIONED DEEP WELLS

#### T.T. - C.J. AREAS

- HAS A 750,000 GAL - INGROUND -  
HIGH LIFT TREATED RESERVOIR
- HAS 2 ELEVATED STORAGE TANKS  
WITH A CAPACITY OF 400,000 GAL
- HAS 4 HIGH LIFT PUMPS WITH A  
TOTAL CAPACITY OF 4800 GPM





Total monthly flow  
10,747,000

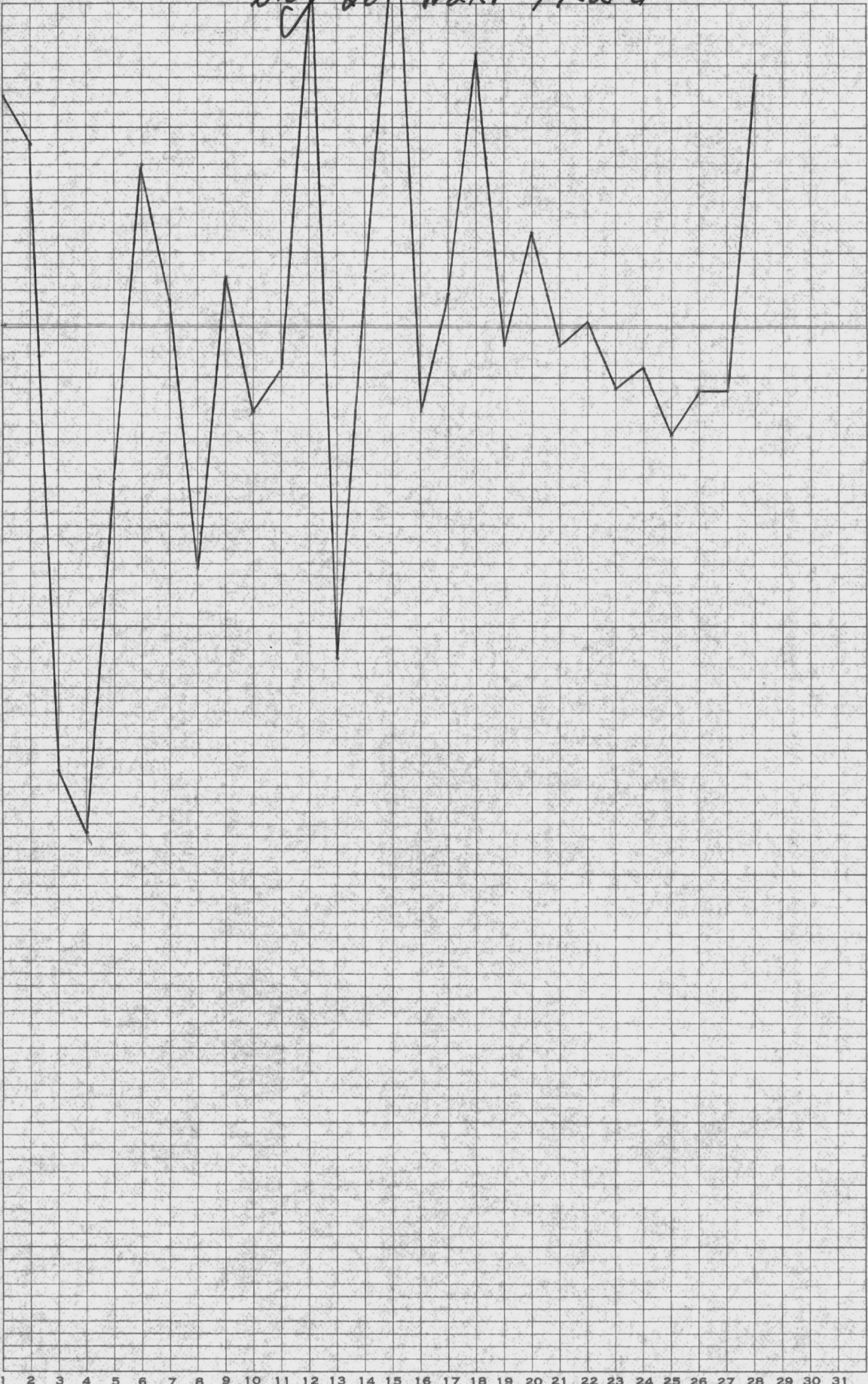
# Blk 20 Water Treated

4,000,000  
3,900,000  
3,800,000  
3,700,000  
3,600,000  
3,500,000  
3,400,000  
3,300,000  
3,200,000  
3,100,000  
3,000,000  
2,900,000

DIETZGEN CORPORATION  
MADE IN U.S.A.

NO. 340-T6 DIETZGEN GRAPH PAPER  
ONE MONTH BY DAYS

gallons/day



Arg daily flow  
3,740,000 gal

MONTH February 1929

1000



10 9 8 7 6 5 4 3 2 1 0 1 2 3 4 5 6 7 8 9 10

1000





Hadnot Point

Water

Jan 1979

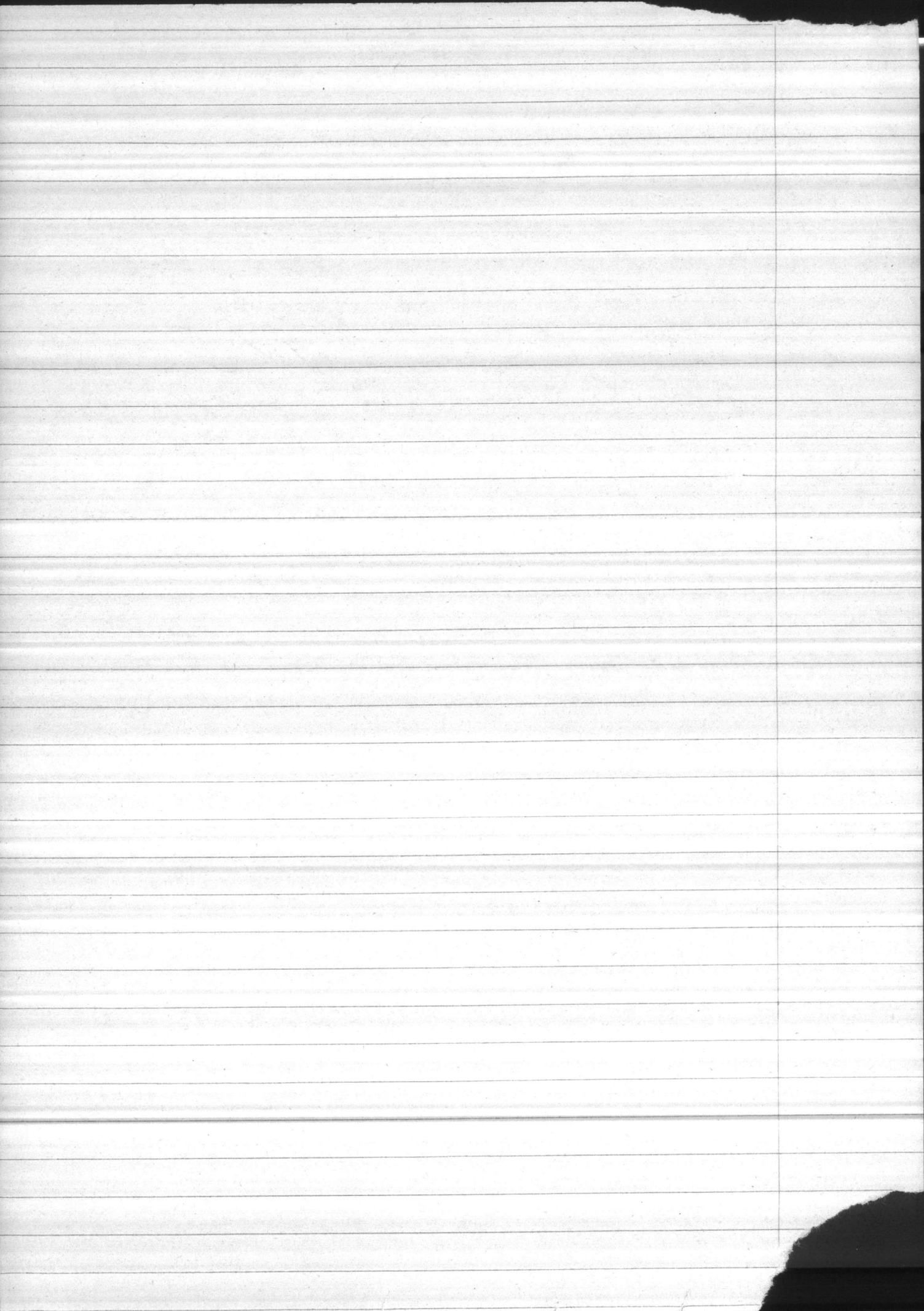
W

- 1 2,664,000
- 2 3,204,000
- 3 3,276,000
- 4 3,384,000
- 5 3,384,000
- 6 3,204,000
- 7 2,916,000
- 8 3,600,000
- 9 3,564,000
- 10 3,492,000
- 11 3,600,000
- 12 3,492,000
- 13 3,168,000
- 14 3,060,000
- 15 3,456,000
- 16 3,348,000
- 17 3,816,000 hi
- 18 3,456,000
- 19 3,492,000
- 20 3,492,000
- 21 2,916,000
- 22 3,636,000
- 23 3,492,000
- 24 3,312,000
- 25 3,348,000
- 26 3,456,000
- 27 3,096,000
- 28 2,988,000
- 29 3,492,000
- 30 3,312,000
- 31 3,384,000

— Lo

Woody Brown

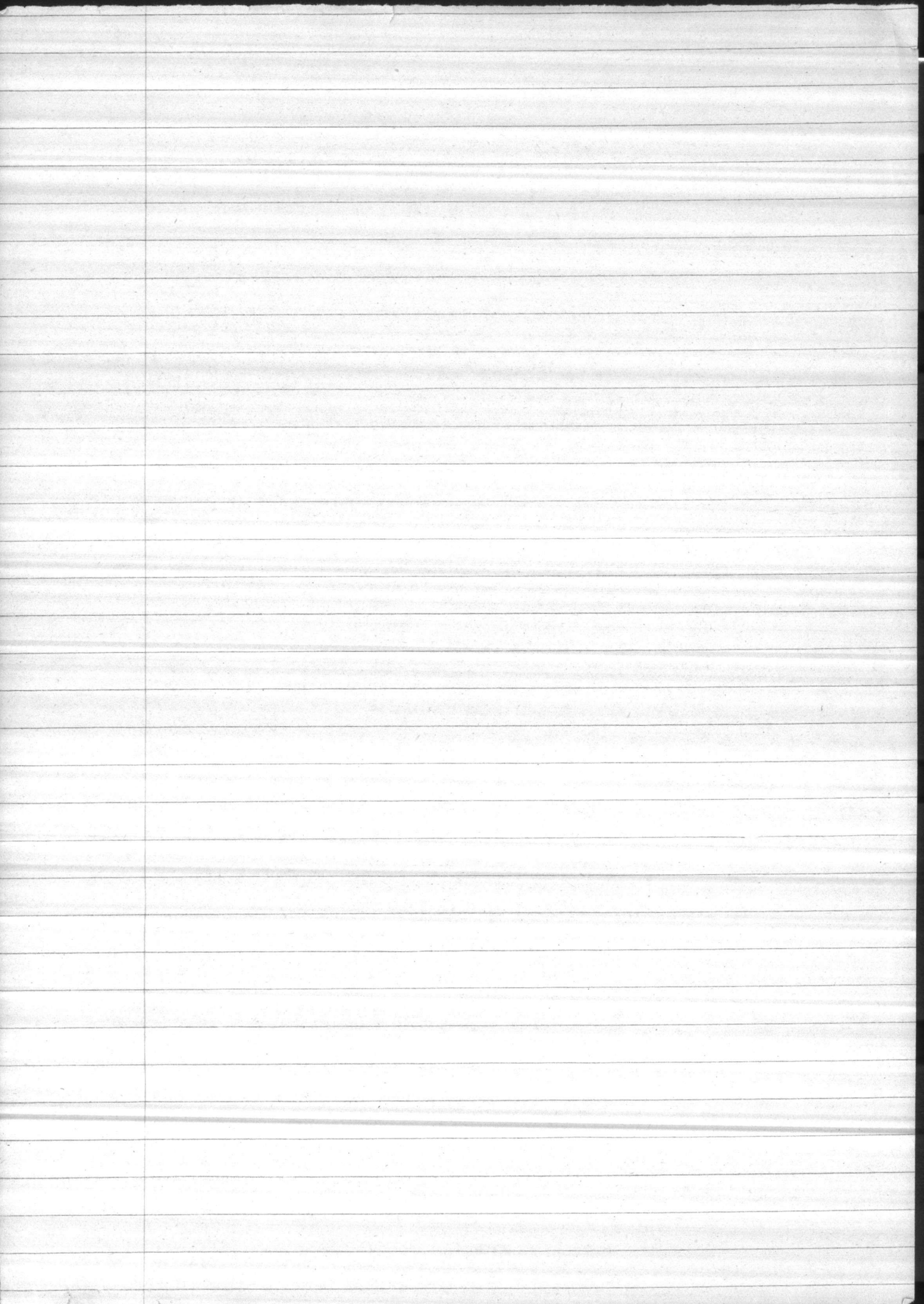
M





Bldg 670 water Jan 1979

		20 + 670
1	<del>1,119,200</del> 1,037,000	3,729,000
2	1,065,000	4,228,
3	1,024,000	4,300
4	892,800	4,276,800
5	1,186,300	4,570,200
6	1,063,900	4,267,900
7	995,200	3,911,100
8	1,020,200	4,620,200
9	925,600	4,489,600
10	960,000	4,552,000
11	1,005,500	4,605,500
12	950,100	4,442,100
13	1,034,000	4,188,100
14	1,020,100	4,080,100
15	1,011,100	4,467,100
16	944,000	4,292,000
17	1,082,100	4,898,100
18	1,096,900	4,552,900
19	875,000	<del>4,499,000</del> 4,367,000
20	1,007,000	4,499,000
21	1,027,000	3,943,000
22	921,000	4,457,000
23	978,000	4,470,000
24	953,000	4,265,000
25	957,200	4,305,200
26	953,000	4,409,000
27	1,016,500	4,112,500
28	1,013,000	4,001,000
29	962,000	4,554,000
30	855,300	4,167,300
31	1,119,200	4,503,200

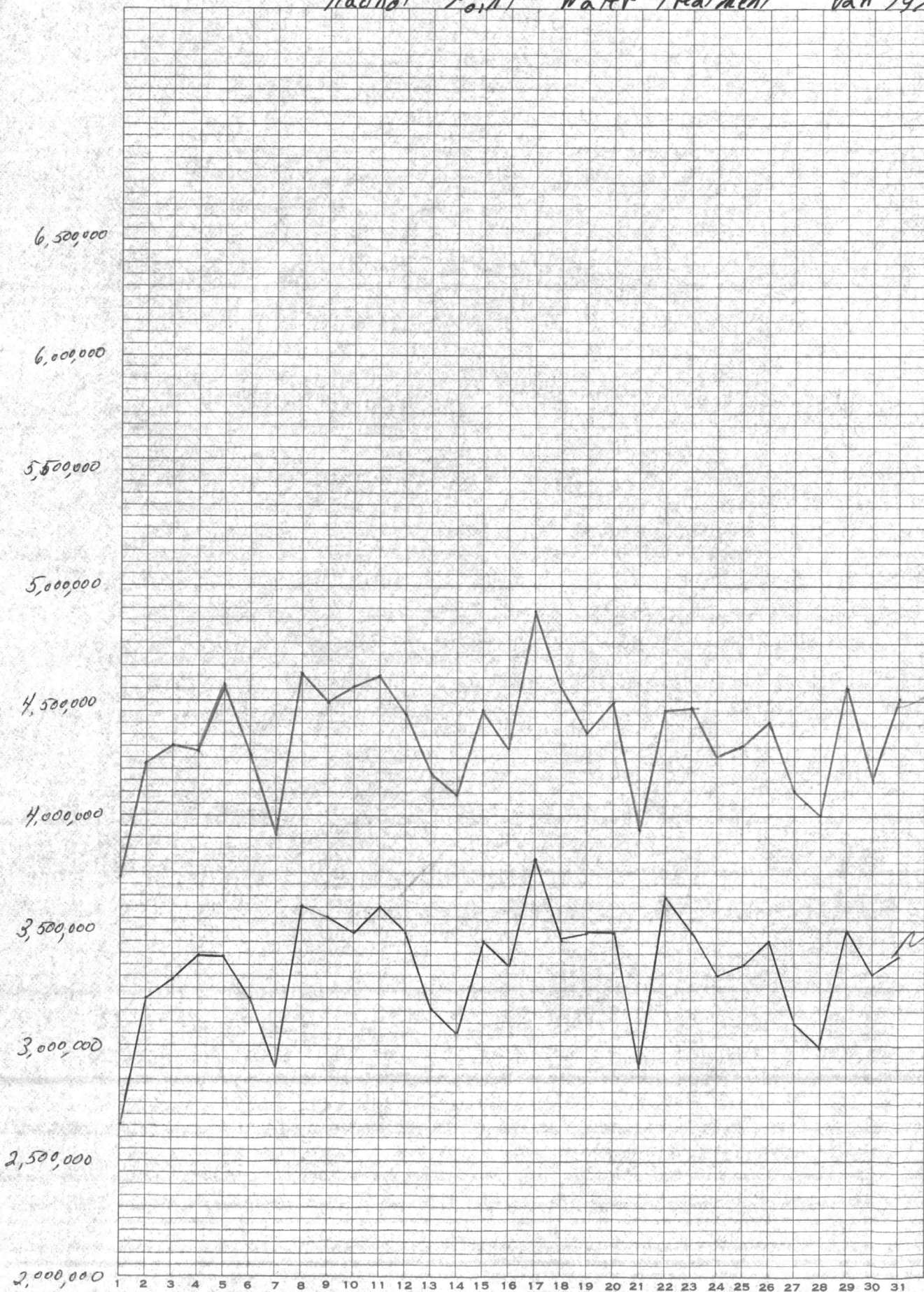




# Hadnot Point Water Treatment Jan 1929

DIETZGEN CORPORATION  
MADE IN U.S.A.

NO. 340-T6 DIETZGEN GRAPH PAPER  
ONE MONTH BY DAYS



Bldg 20 + 670

Bldg 20 only

MONTH January 1929

Handwritten text at the top of the page, possibly a title or header, which is mostly illegible due to fading and bleed-through.

Small handwritten notes or scribbles on the left margin of the page.

