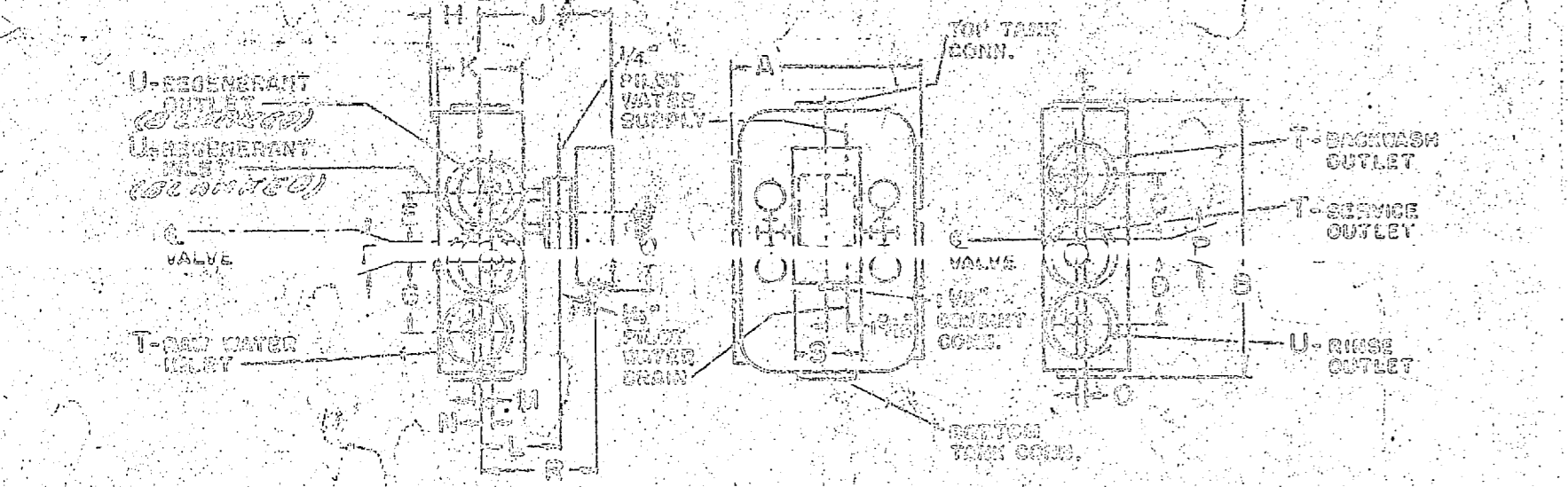


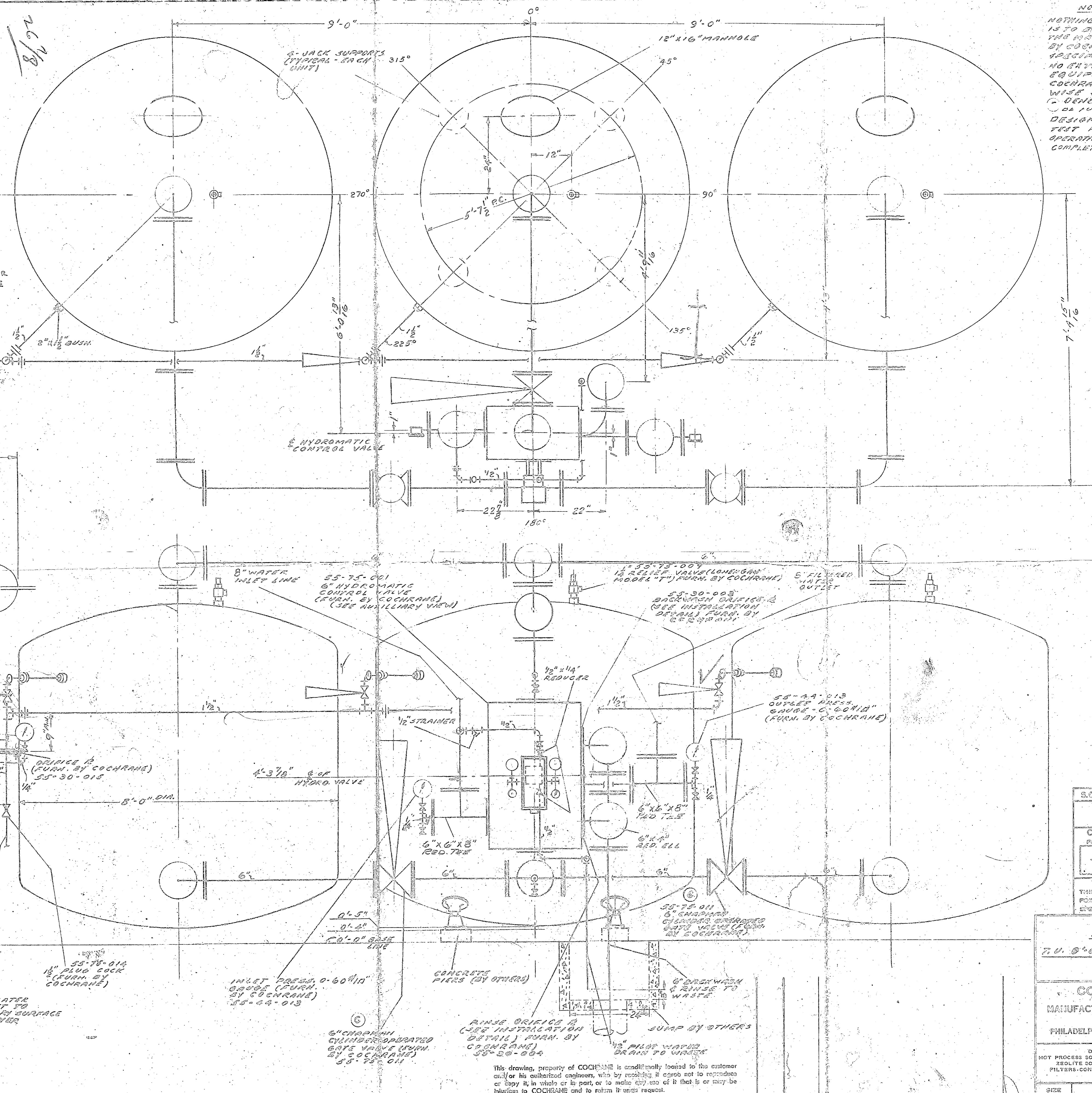
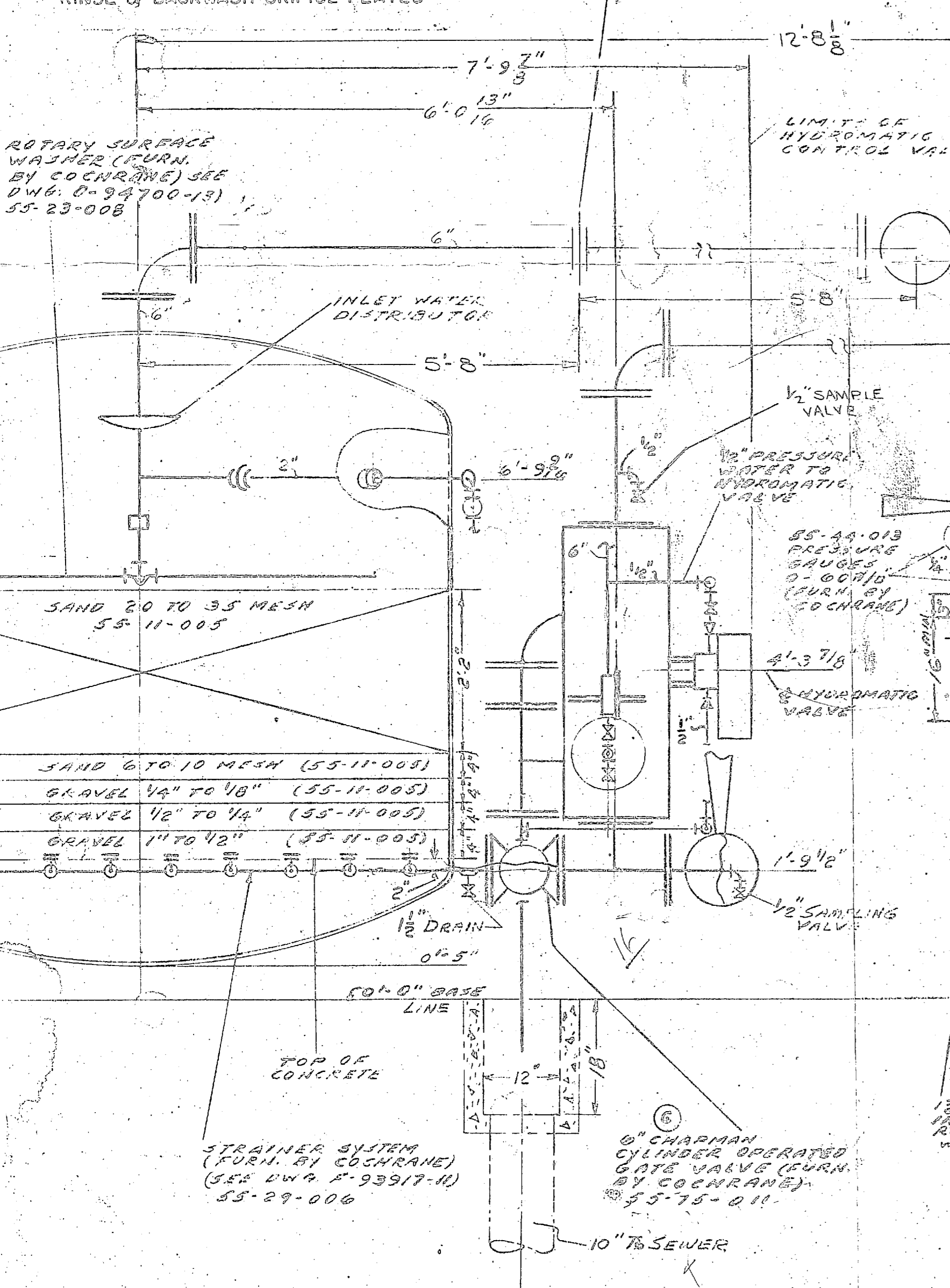
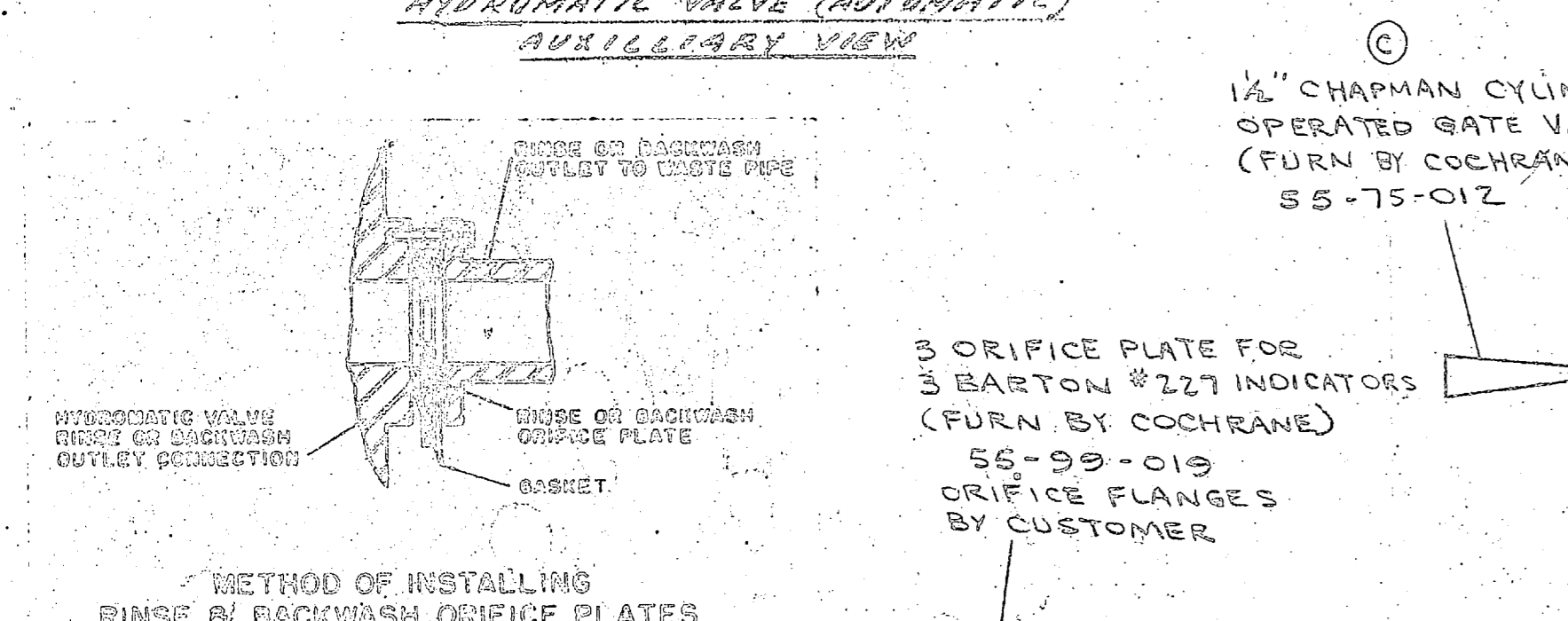
NOTICE TO CUSTOMER
 NOTHING SHOWN ON THIS DRAWING IS TO BE CONSIDERED AS INDICATING THE MATERIALS TO BE SUPPLIED BY COCHRANE DIV. OVER THAT SPECIFIED IN THEIR CONTRACT. NO CHANGES IN PIPING OR EQUIPMENT FURNISHED BY COCHRANE DIV. UNLESS OTHERWISE SPECIFIED ON DRAWING. COCHRANE'S CERTIFIED PRINTS WILL BE FURNISHED ON REQUEST. DESIGN PRESSURE 50 PSI - NON-CODE. TEST PRESSURE - 75 PSI. OPERATING WEIGHT APPROX. 93,000 LBS. COMPLETE ASSEMBLY.



INDICATOR SIZES FOR 2" VALVE ONLY

VALVE SIZE	A	B	C	D	E	F	G	H	J	K	L	M	N	O	P	R	S	T	U
6"	2 1/2"	4 1/2"	5 1/2"	11"	7 1/2"	8 1/2"	10"	8 1/2"	2 1/2"	1 1/2"	1 1/2"	1 1/2"	1 1/2"	1 1/2"	1 1/2"	1 1/2"	1 1/2"	1 1/2"	1 1/2"

DIMENSIONS IN INCHES



S.O. 1178-64 DATE JUL 24 1964

THIS DRAWING IS UNDER APPROVAL

RETURN ONE PRINT IMMEDIATELY TO AVOID DELAY IN FABRICATION

CERTIFIED CONSTRUCTION DRAWING

COCHRANE DIVISION

PHILADELPHIA 32

PAENNSYLVANIA

DESIGNERS AND MANUFACTURERS OF HOT PROCESS SOFTENERS, DEAIRATING HEATERS-DEMINERALIZERS, ZEOHITE SOFTENERS-STEAM SPECIALTIES-DEALKALIZERS, FILTERS-CONDENSATE DRAINAGE CONTROL UNITS-REACTORS CONTINUOUS BLOWDOWN SYSTEMS

SIZE NUMBER CIRC. LTR.

140547 A

70' DIA. PRESSURE FILTER

COCHRANE DIVISION

MANUFACTURING ENGINEERS

PHILADELPHIA 32 PENNSYLVANIA

DESIGNERS AND MANUFACTURERS OF HOT PROCESS SOFTENERS, DEAIRATING HEATERS-DEMINERALIZERS, ZEOHITE SOFTENERS-STEAM SPECIALTIES-DEALKALIZERS, FILTERS-CONDENSATE DRAINAGE CONTROL UNITS-REACTORS CONTINUOUS BLOWDOWN SYSTEMS

SCALE DRAWN DATE CHECKED FIRST USED ON S.O. APPD. ITR. DATE REVISION

1178-64

7/11/64

7/11/64

7/11/64

This drawing, property of COCHRANE is conditionally loaned to the customer and/or his authorized engineers, who by receiving it agree not to reproduce or copy it in whole or in part, or to make any use of it that is or may be injurious to COCHRANE and to return it upon request.

COCHRANE DIVISION - CRANE CO.

information for
Filters on
Sand + Gravel

information for
Filters
on
Sand
+
Gravel