

METHOD OF INSTALLING BACKWASH AND RINSE ORIFICE PLATE

NOTES

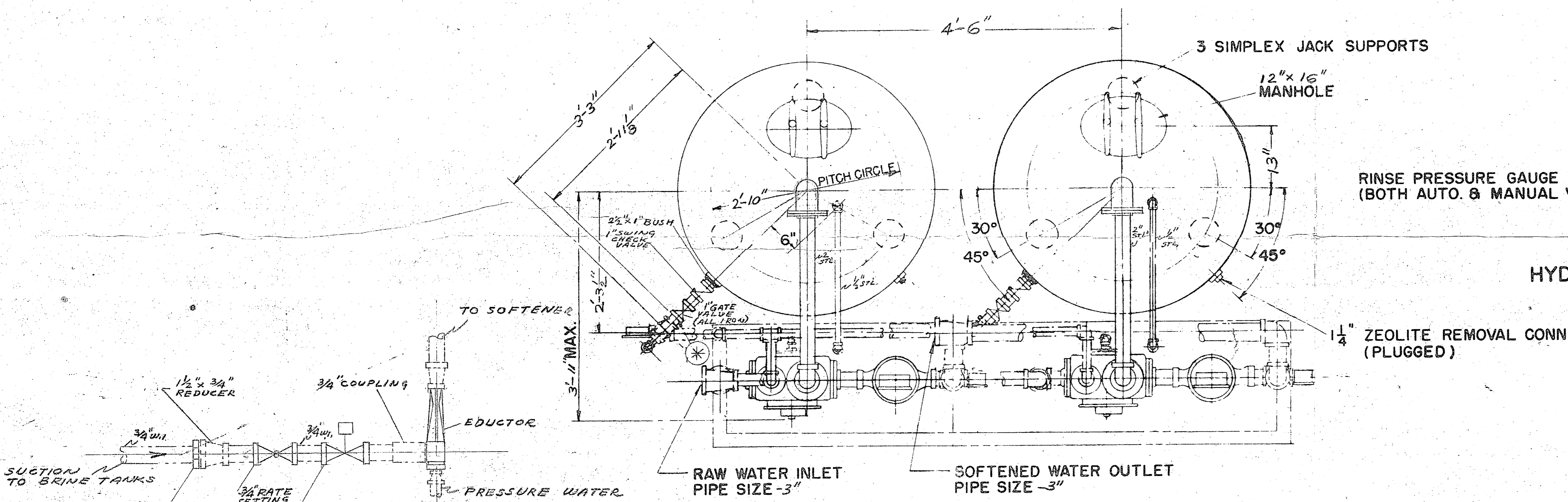
NOTHING SHOWN ON THIS DRAWING IS TO BE CONSTRUED AS INCREASING THE MATERIALS TO BE SUPPLIED BY THE COCHRANE CORPORATION OVER THAT SPECIFIED IN THEIR CONTRACT. DIMENSIONS LOCATING OPENINGS MAY VARY  $\pm \frac{3}{16}$ ". PIPING, ETC., SHOWN IN DOT & DASH LINES NOT FURNISHED BY THE COCHRANE CORP. PIPING FURNISHED BY THE COCHRANE CORP. STOPS AT POINTS MARKED  $\odot$ . ALL PIPING FURNISHED BY THE COCHRANE CORP. TO BE IN 5'-0" LENGTHS, CUSTOMER TO CUT, THREAD & FIT ALL PIPING. DESIGN PRESSURE 75 PSI - 1952-CODE TEST PRESSURE 139 PSI

FOR PRESSURE ADJUSTMENTS SEE OPERATING INSTRUCTIONS.

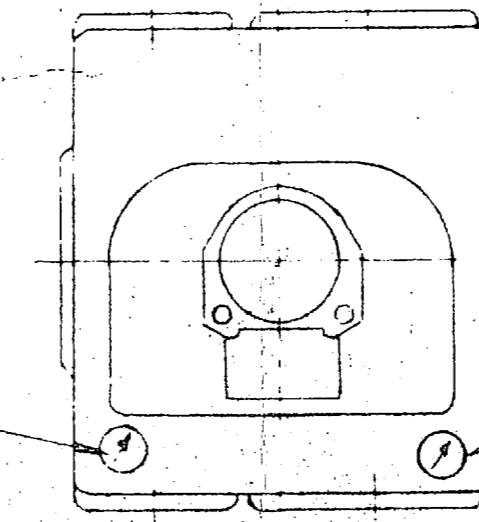
FLOODED WEIGHT - 7400# EACH

PIPING INDICATED BY STL IS TO BE STEEL SCH.#40 PIPE WITH SCREWED CAST IRON FITTINGS AND SCREWED BRASS GATE VALVES UP TO 2"

PIPING INDICATED BY W.I. IS TO BE SCH.#40 WROUGHT IRON (A-72-33 WITH CAST IRON SCREWED FITTINGS & SCREWED ALL IRON VALVES.

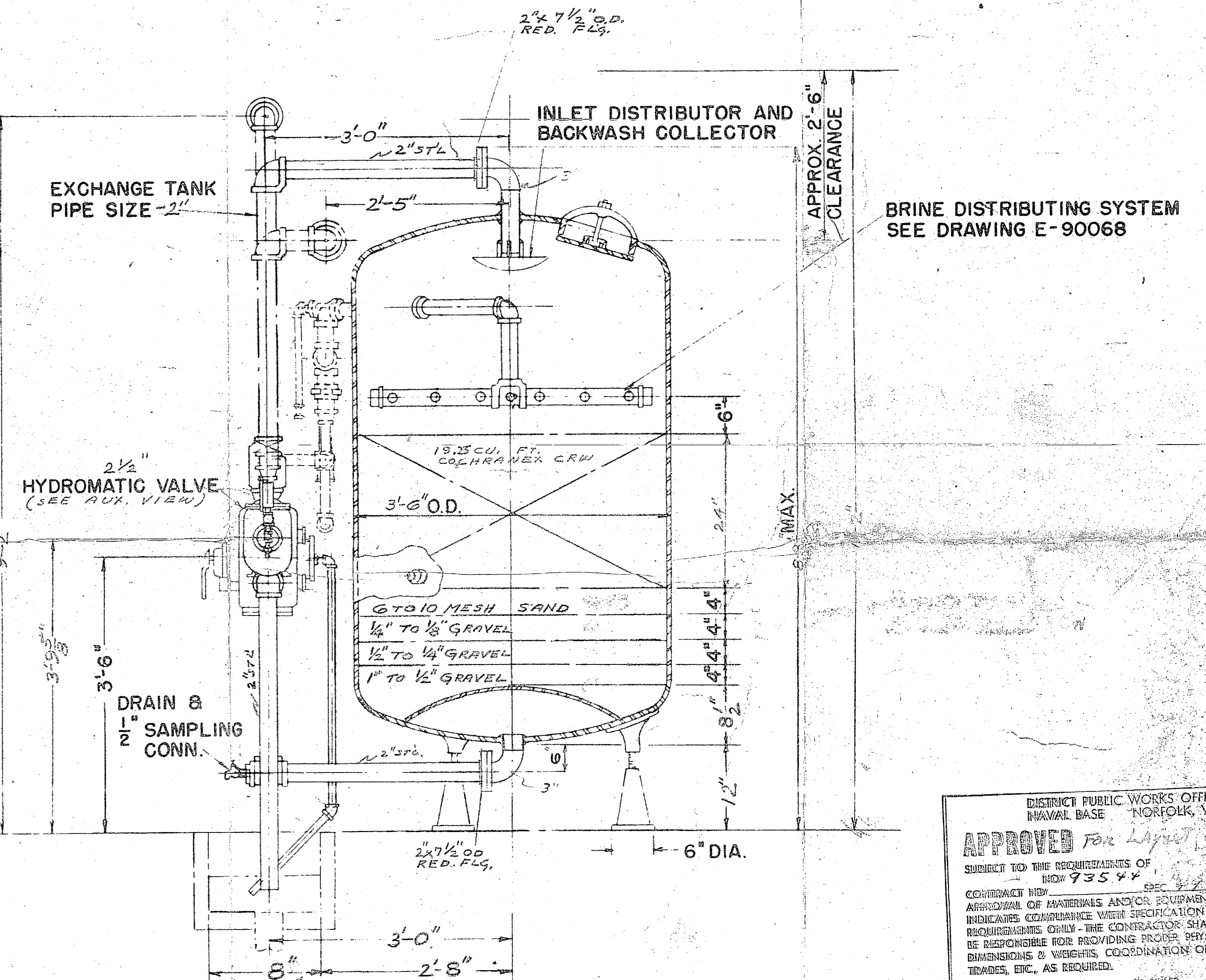
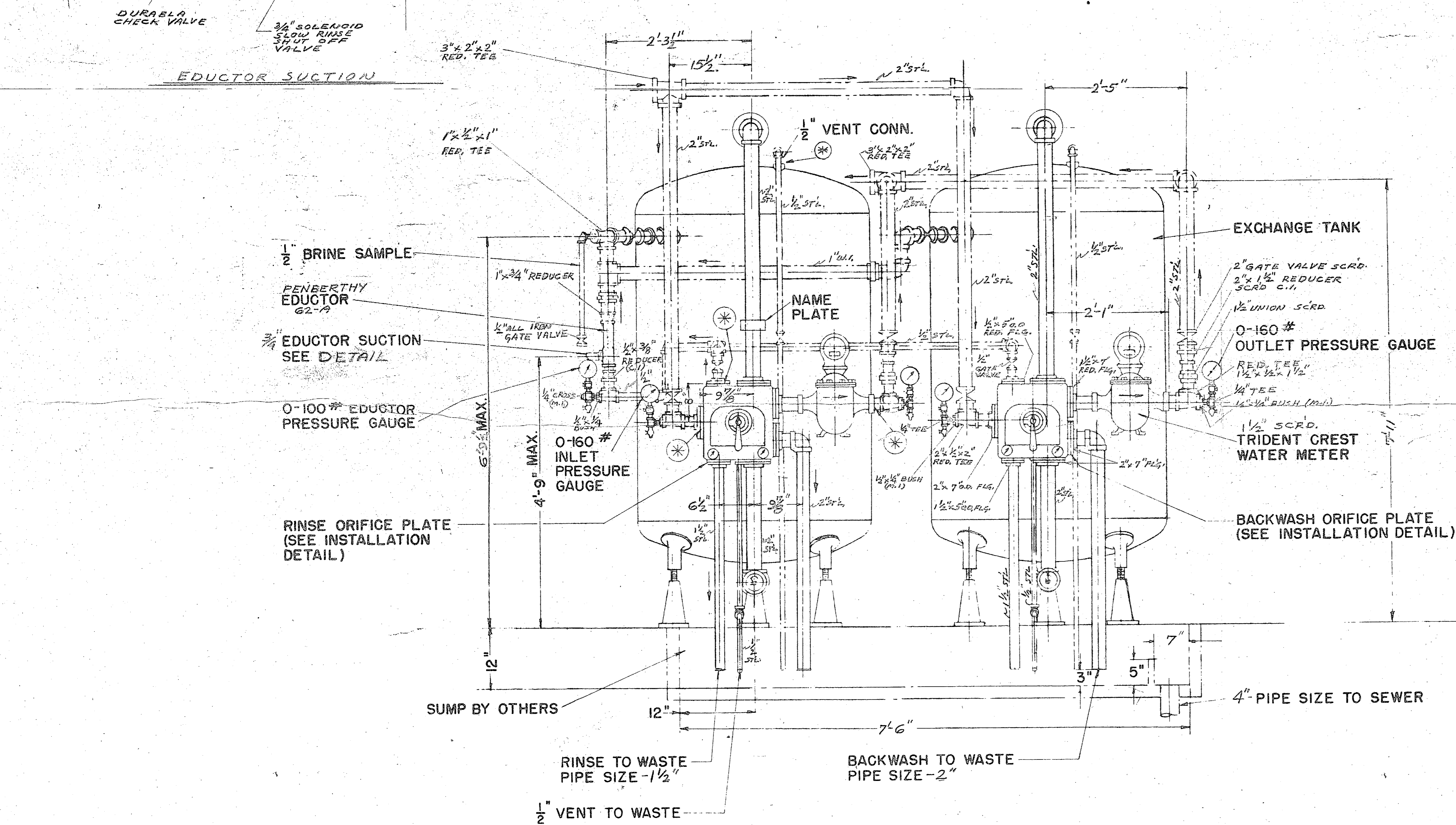


RINSE PRESSURE GAUGE 0-60 #1/2" (BOTH AUTO. & MANUAL VALVE)



BACKWASH PRESSURE GAUGE 0-60 #1/2" (BOTH AUTO. & MANUAL VALVE)

AUX VIEW HYDROMATIC VALVE AUTOMATIC OPERATION

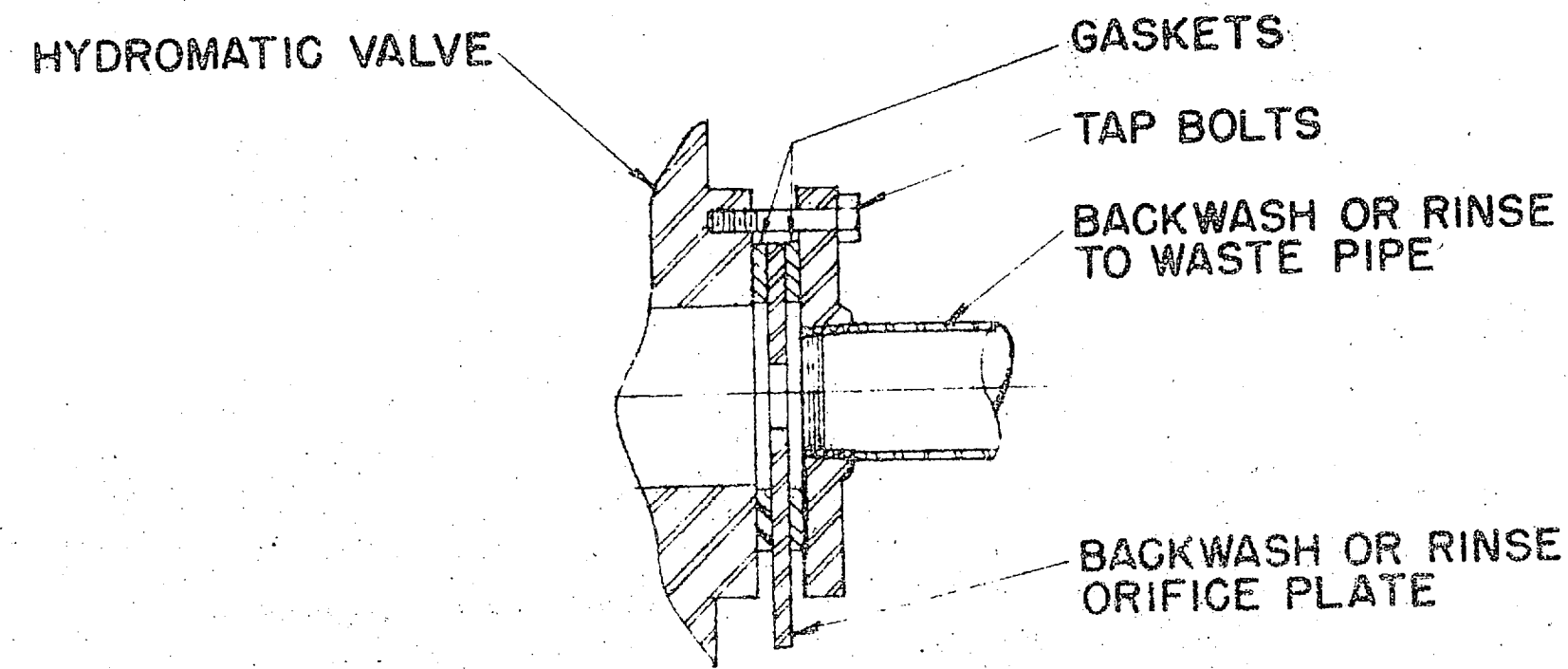


DISTRICT PUBLIC WORKS OFFICE  
 MANUAL BASE - NORFOLK, VA  
**APPROVED** For Layout C  
 SUBJECT TO THE REQUIREMENTS OF  
 SPEC 73544  
 CONTRACT NO. 3202-56  
 APPROVAL OF MATERIALS AND/OR EQUIPMENT  
 INDICATES CONFORMANCE WITH SPECIFICATION  
 REQUIREMENTS ONLY - THE CONTRACTOR SHALL  
 BE RESPONSIBLE FOR PROVIDING PROPER PHYSICAL  
 DIMENSIONS & WEIGHTS COORDINATION OF  
 TOLERANCES, ETC. AS REQUIRED.  
 M. SHERIDAN  
 DATE 8-3-56

NO.	DATE	REVISION	CHECKED	APPROVED
DOUBLE UNIT ZEOLITE SOFTENER WITH DIFFUSER PLATE UNDERDRAIN (AUTO. CONTROL)				
COCHRANE CORPORATION PHILADELPHIA, PA.				
DESTROY PREVIOUS COPIES THIS PRINT DUPLICATES PRINTS PREVIOUSLY FORWARDED YOU EXCEPT FOR CHANGES AS SPECIFIED IN REVISION BLOCK				
<b>G 11338</b>				

50 3202-56 DATE JUL 24 1956  
 THIS DRAWING IS FOR APPROVAL  
 RETURN ONE PRINT IMMEDIATELY  
 TO AVOID DELAY IN FABRICATION  
 CERTIFIED CONSTRUCTION DRAWING  
 FOR YOUR ORDER NO.  
**MCB-SPEC 49928**  
 J. J. [Signature]  
 DESTROY PREVIOUS COPIES  
 THIS PRINT DUPLICATES PRINTS PREVIOUSLY  
 FORWARDED YOU EXCEPT FOR CHANGES AS  
 SPECIFIED IN REVISION BLOCK

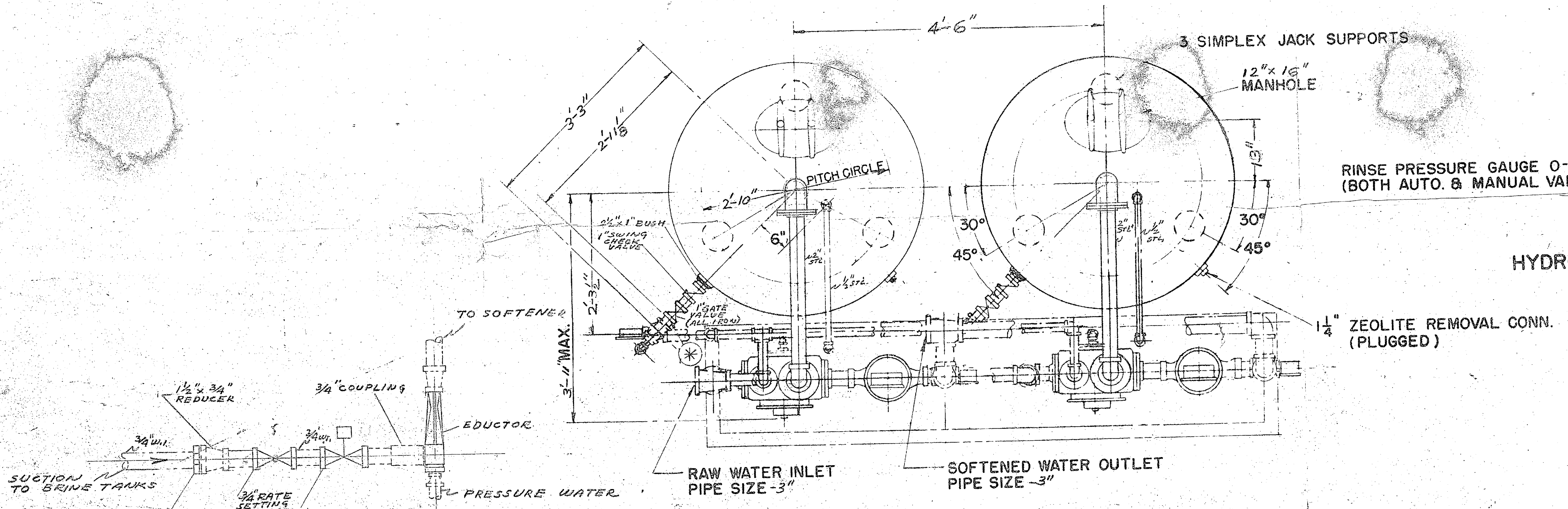




METHOD OF INSTALLING BACKWASH AND RINSE ORIFICE PLATE

**NOTES**  
 NOTHING SHOWN ON THIS DRAWING IS TO BE CONSTRUED AS INCREASING THE MATERIALS TO BE SUPPLIED BY THE COCHRANE CORPORATION OVER THAT SPECIFIED IN THEIR CONTRACT.  
 DIMENSIONS LOCATING OPENINGS MAY VARY  $\frac{3}{16}$ "  
 PIPING, ETC., SHOWN IN DOT & DASH LINES NOT FURNISHED BY THE COCHRANE CORP.  
 PIPING FURNISHED BY THE COCHRANE CORP. STOPS AT POINTS MARKED  $\oplus$ .  
 ALL PIPING FURNISHED BY THE COCHRANE CORP. TO BE IN 5'-0" LENGTHS, CUSTOMER TO CUT, THREAD & FIT ALL PIPING.  
 DESIGN PRESSURE 75# 1952-CODE TEST PRESSURE 139#

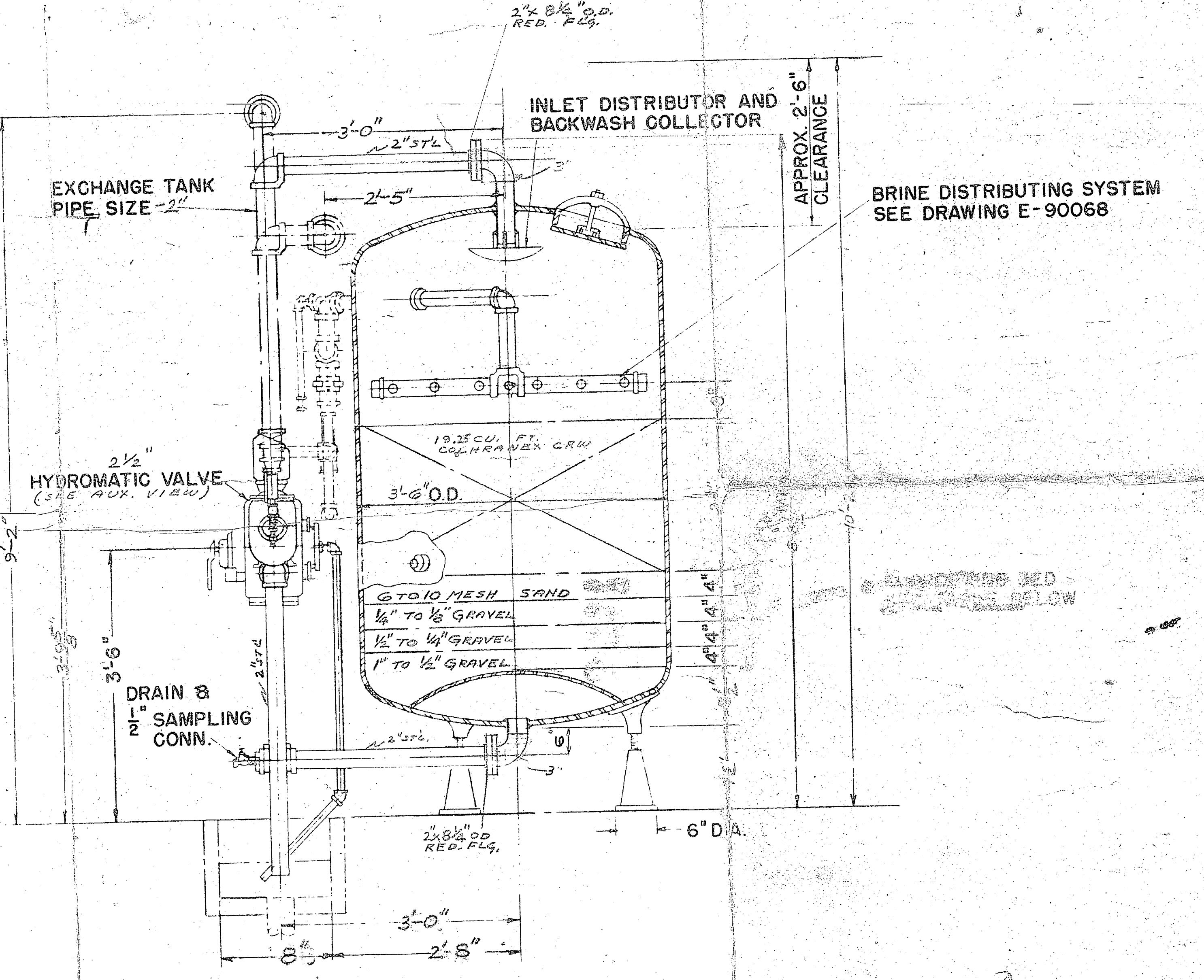
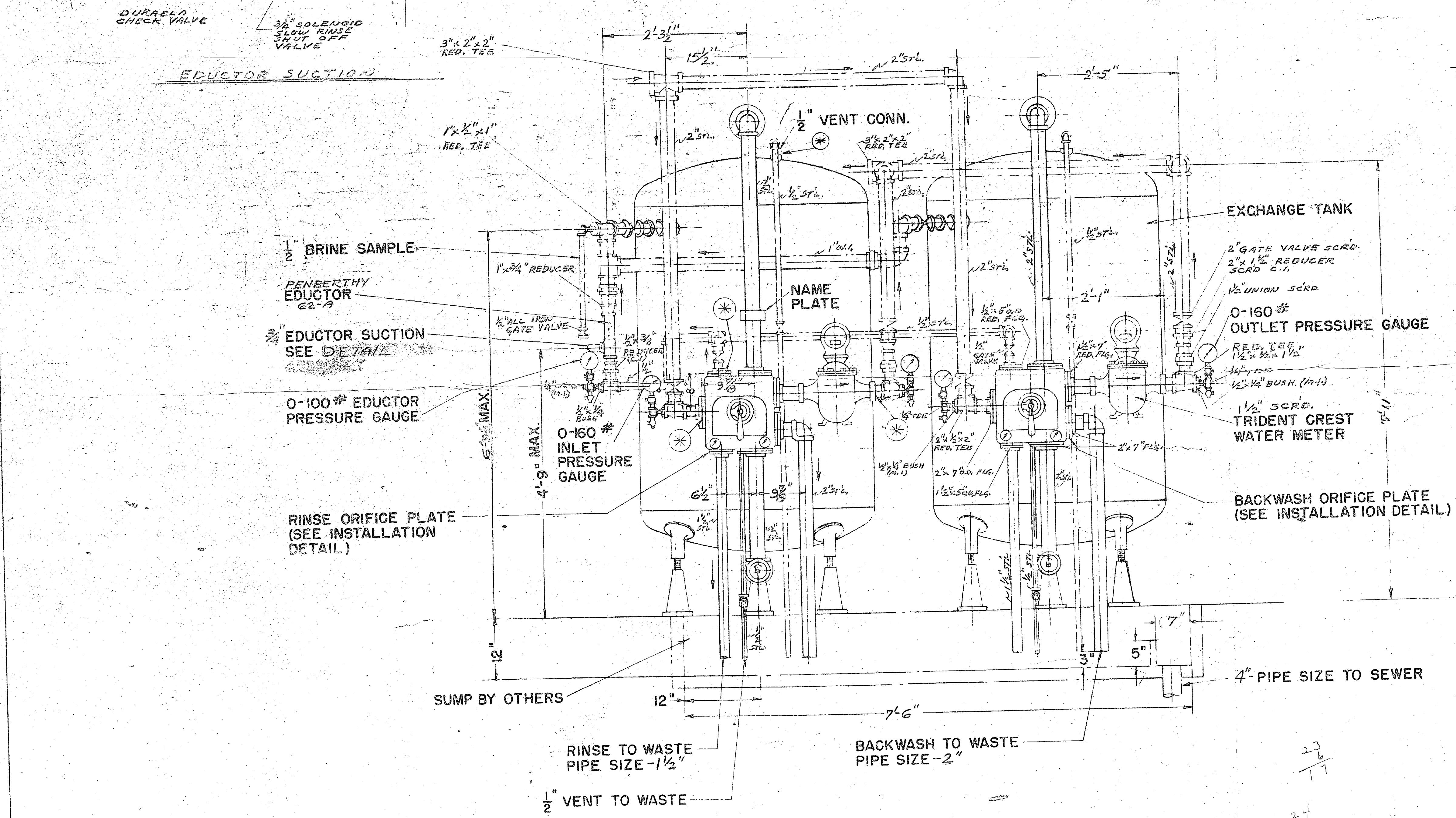
FOR PRESSURE ADJUSTMENTS SEE OPERATING INSTRUCTIONS.  
**FLOODED WEIGHT - 7400# EACH**  
 PIPING INDICATED BY STL IS TO BE STEEL SCH.#40 PIPE WITH SCREWED CAST IRON FITTINGS AND SCREWED BRASS GATE VALVES UP TO 2"  
 PIPING INDICATED BY W.I. IS TO BE SCH.#40 WROUGHT IRON (A-72-39 WITH CAST IRON SCREWED FITTINGS & SCREWED ALL IRON VALVES.



RINSE PRESSURE GAUGE 0-60 #/sq. in. (BOTH AUTO. & MANUAL VALVE)

BACKWASH PRESSURE GAUGE 0-10 #/sq. in. (BOTH AUTO. & MANUAL VALVE)

AUX. VIEW HYDRAMATIC VALVE AUTOMATIC OPERATION



BRINE DISTRIBUTING SYSTEM SEE DRAWING E-90068

NO.	DATE	REVISION	APPROVED
1	NOV 2 1956		

DOUBLE UNIT ZEOLITE SOFTENER WITH DIFFUSER PLATE UNDERDRAIN (AUTO. CONTROL)

COCHRANE CORPORATION

PHILADELPHIA, PA.

DESIGN: J. J. ...  
 CHECKED: ...  
 DRAWN: ...

