

**THE FOLLOWING
DOCUMENT IMAGE(S)
WERE POOR QUALITY IN THE
ORIGINAL PAPER FORMAT**

**Confidential Records Management, Inc.
New Bern, NC
1-888-622-4425
9/08**

1	F-118787		F-118787				
2	E-118833	1	E-118833	1			
3	E-118630	1	E-118634	1			
4	F-118762		F-118764	1			
5	139004	3	136193	3			
6	139004	3	136193	3			
7	86360	1	86360	1			
8	114185	2	114185	2			
9	1/8" -16UNC x 2 1/4" LG.	200	1/8" -16UNC x 2 1/4" LG.	200			
10	1/8" -16UNC x 2 1/4" LG.	400	1/8" -16UNC x 2 1/4" LG.	400			
11	3/8" SCH 40 PIPE x 6 3/8" LG. FINISHED ENDS, CUT WITH ABRASIVE WHEEL	400	3/8" SCH 40 PIPE x 6 3/8" LG. FINISHED ENDS, CUT WITH ABRASIVE WHEEL	400			
12	1/2" -16UNC x 7" LG.	400	1/2" -16UNC x 7" LG.	400			
13	115028	1	115028	1			
14	115066	1	115066	1			
15	115075	1	115075	1			
16	115078	1	115078	1			
17	115739	2	115790	2			
18	118789	3	118790	3			
19	118805	1	118805	1			
20	119265	1	119265	1			
21	118860	1	118862	1			
22							
23							
24							
25							
26							
27							
28							
29							
30							
31							
32							
33							
34							
35							
36							
37							
38							
39							
40							
41							
42							
43							
44							
45							
46							
47							
48							
49							
50							
51							
52							
53							
54							
55							
56							
57							
58							
59							
60							
61							
62							
63							
64							
65							
66							
67							
68							
69							
70							
71							
72							
73							
74							
75							
76							
77							
78							
79							
80							
81							
82							
83							
84							
85							
86							
87							
88							
89							
90							
91							
92							
93							
94							
95							
96							
97							
98							
99							
100							

ITEMS ABOVE 100 ARE ASSEMBLY AND MAINTENANCE TOOLS.

DATE
 RETURN TO THE POINT OF ORIGIN
 WITHIN ONE MONTH OF THE DATE
 OF THIS ORDER. INSTRUCTIONS
 OTHER THAN THOSE PRINTED
 HEREON SHALL BE VOID.

APPROVED BY
 SPECIAL AGENT IN CHARGE
 FBI - MEMPHIS

APPROVED BY
 SPECIAL AGENT IN CHARGE
 FBI - MEMPHIS

APPROVED BY
 SPECIAL AGENT IN CHARGE
 FBI - MEMPHIS

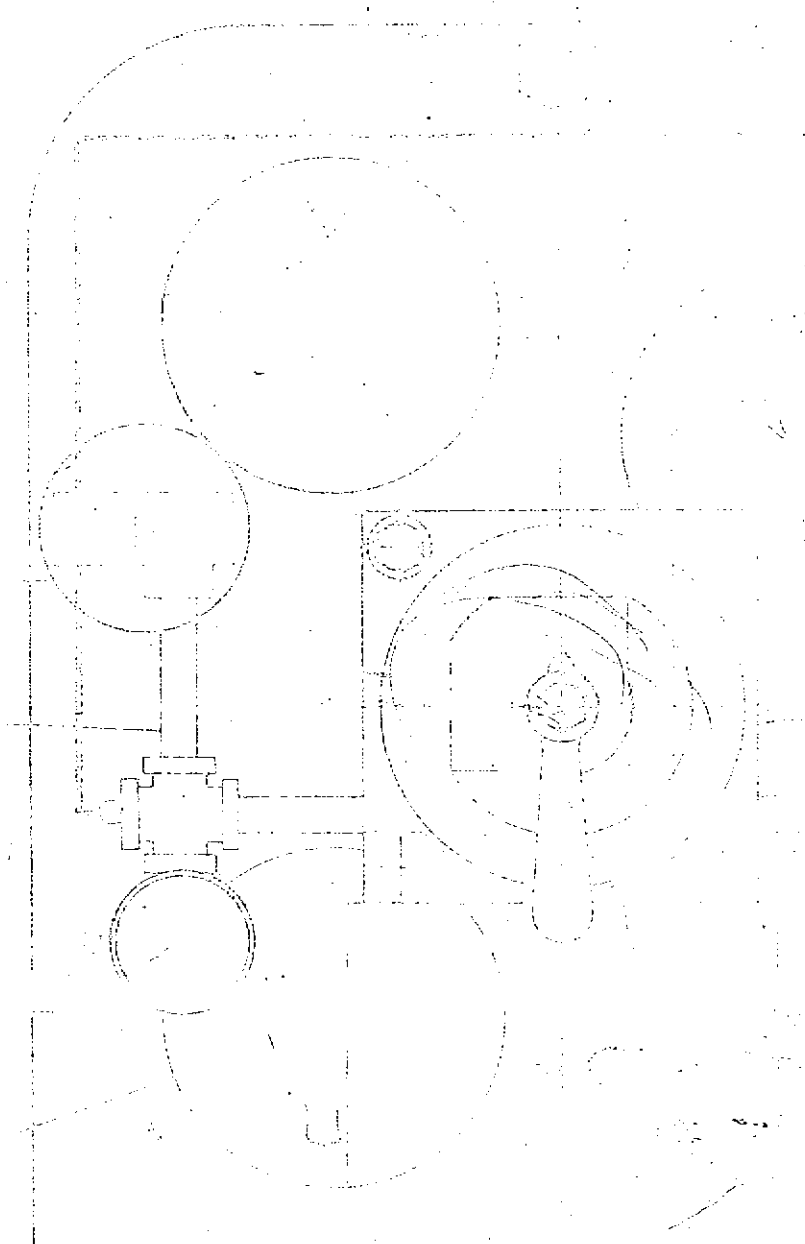
APPROVED BY
 SPECIAL AGENT IN CHARGE
 FBI - MEMPHIS

APPROVED BY
 SPECIAL AGENT IN CHARGE
 FBI - MEMPHIS

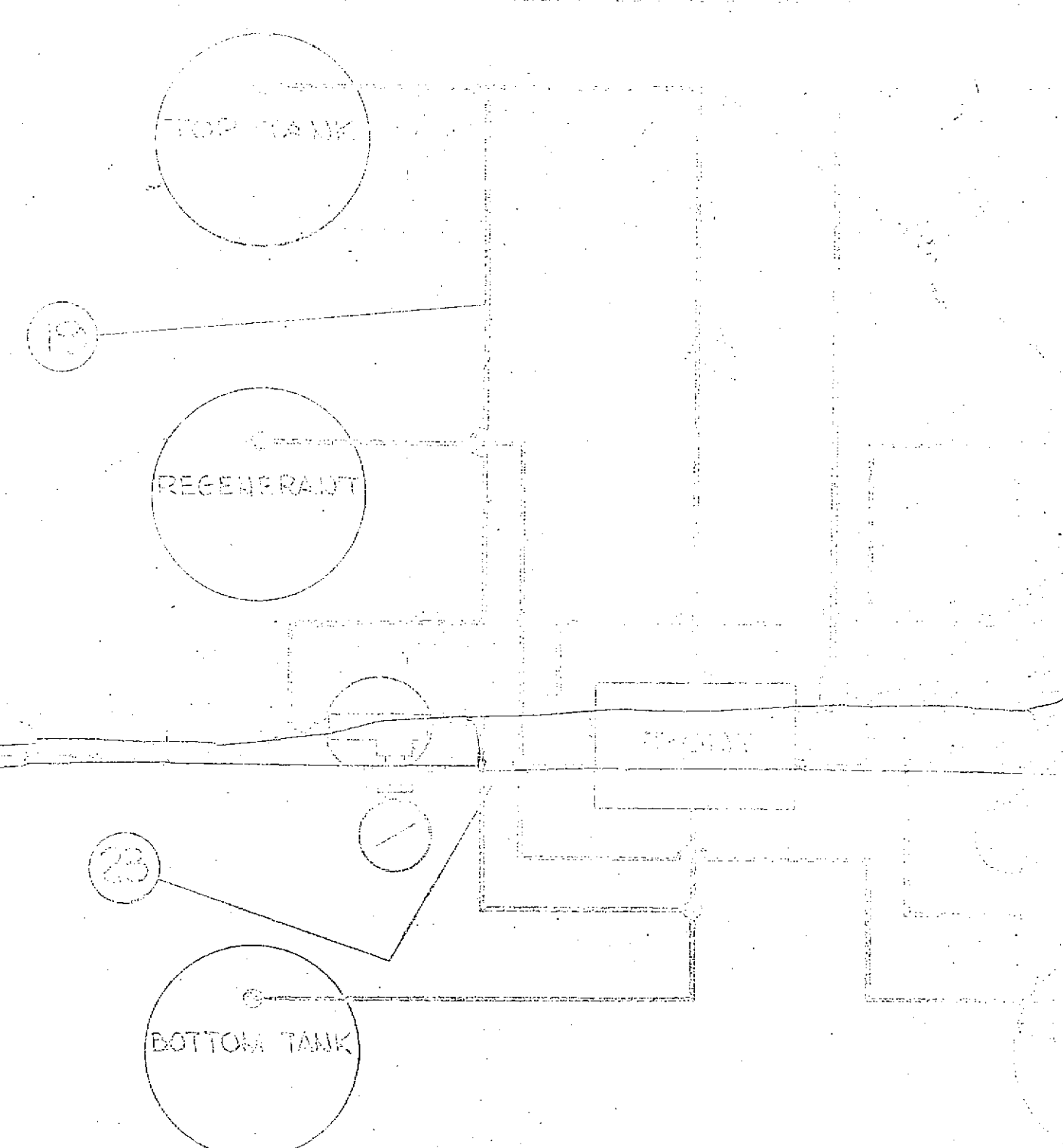
APPROVED BY
 SPECIAL AGENT IN CHARGE
 FBI - MEMPHIS



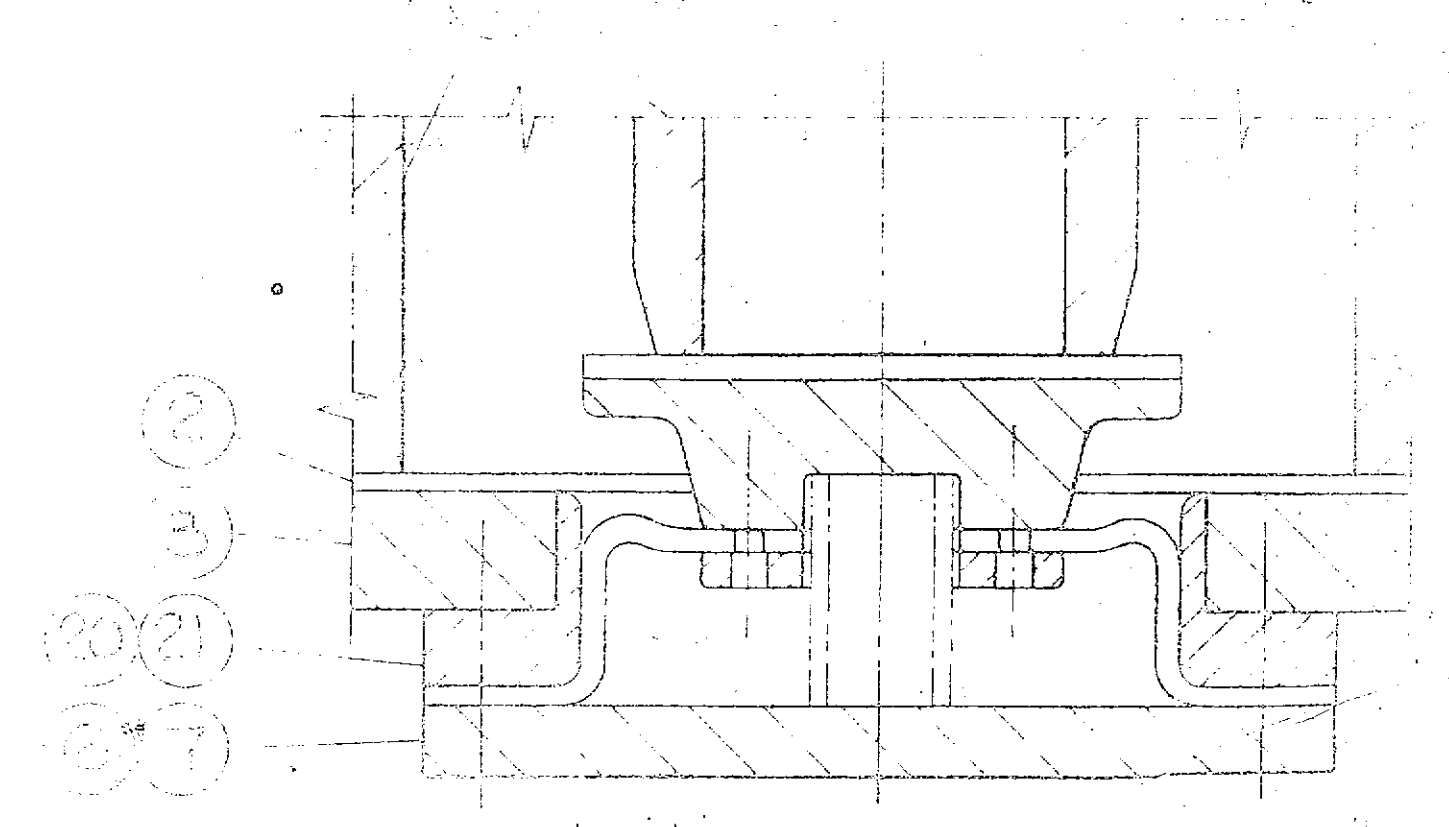
317



HYDROMATIC PRESSURE



SCHEMATIC TUBING DIAGRAM FOR MANUAL OR AUTOMATIC OPER.



NOTE:
 1. THE HYDROMATIC SYSTEM IS TO BE INSTALLED IN THE
 2. ...
 3. ...
 4. ...
 5. ...

HYDROMATIC SYSTEM
 AUTOMATIC DRIVE AND
 WEATHERPROOF DRIVE

CONDUIT
 GROUP

