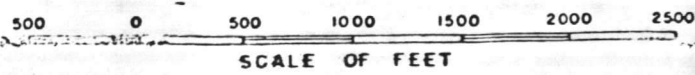


SITE LOCATION MAP
 AVIATION NAVIGATIONAL AIDS

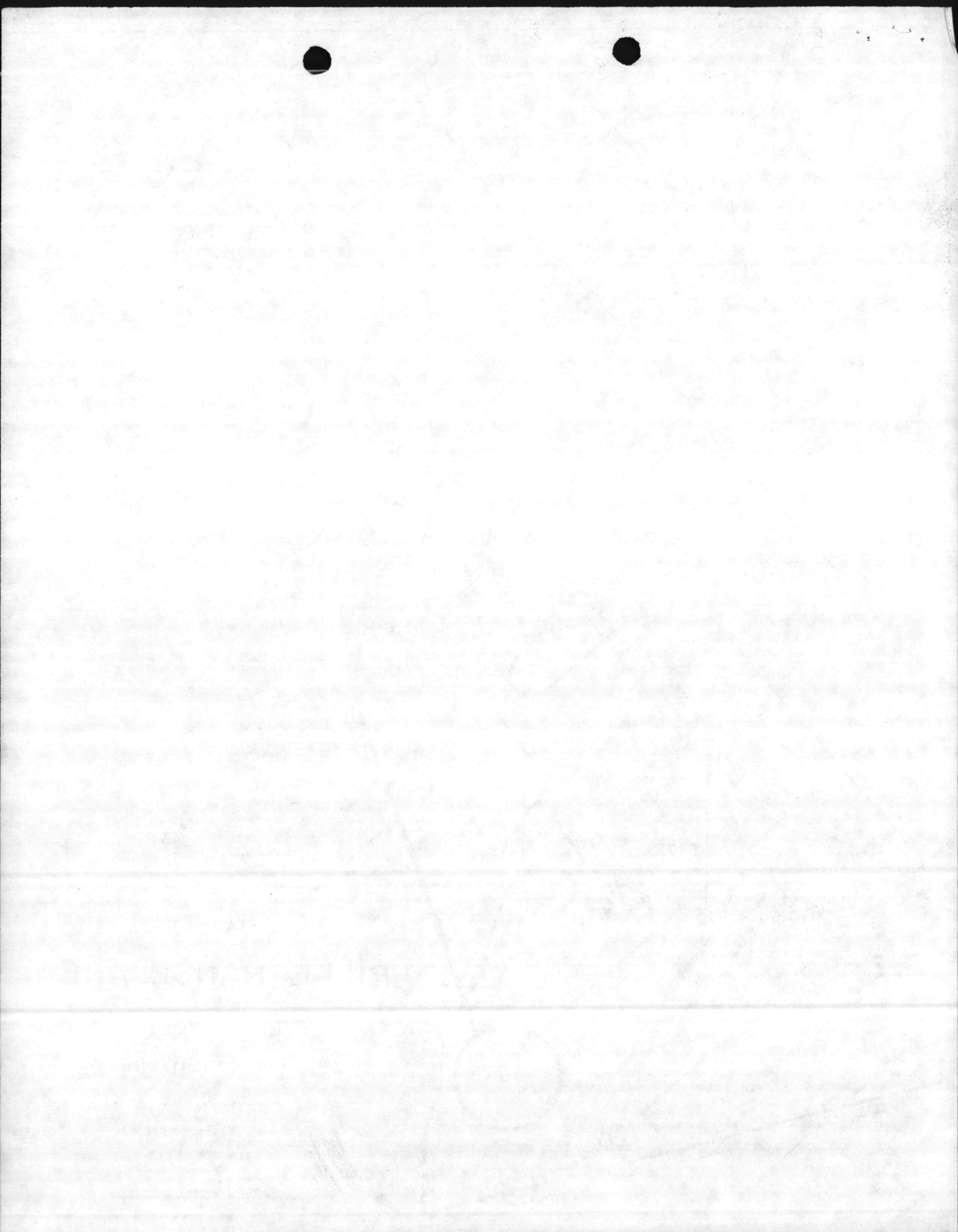
SITE APPROVED
 HQMS
 DATE 7/18/82
 BY [Signature]

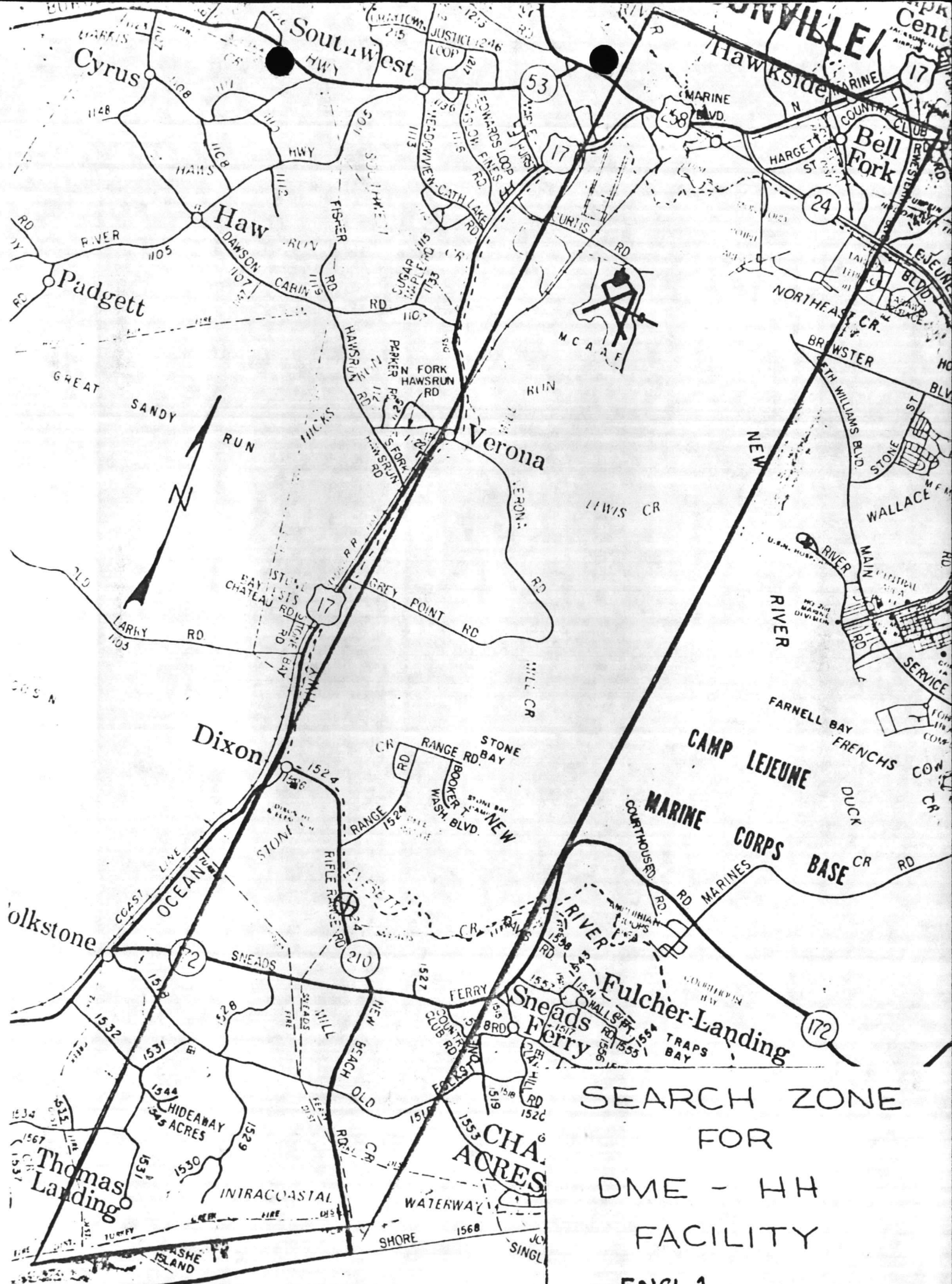
- EXPLANATION
- BUILDINGS
 - ASPHALT SURFACED
 - SHELL ROCK SURFACED
 - FENCE
 - O.H. POWER
 - O.H. TELEPHONE
 - EARTH ROAD

MAP OF
 RIFLE RANGE AREA
 CAMP LEJEUNE, NORTH CAROLINA
 SHOWING CONDITIONS ON
 JUNE 30, 1979



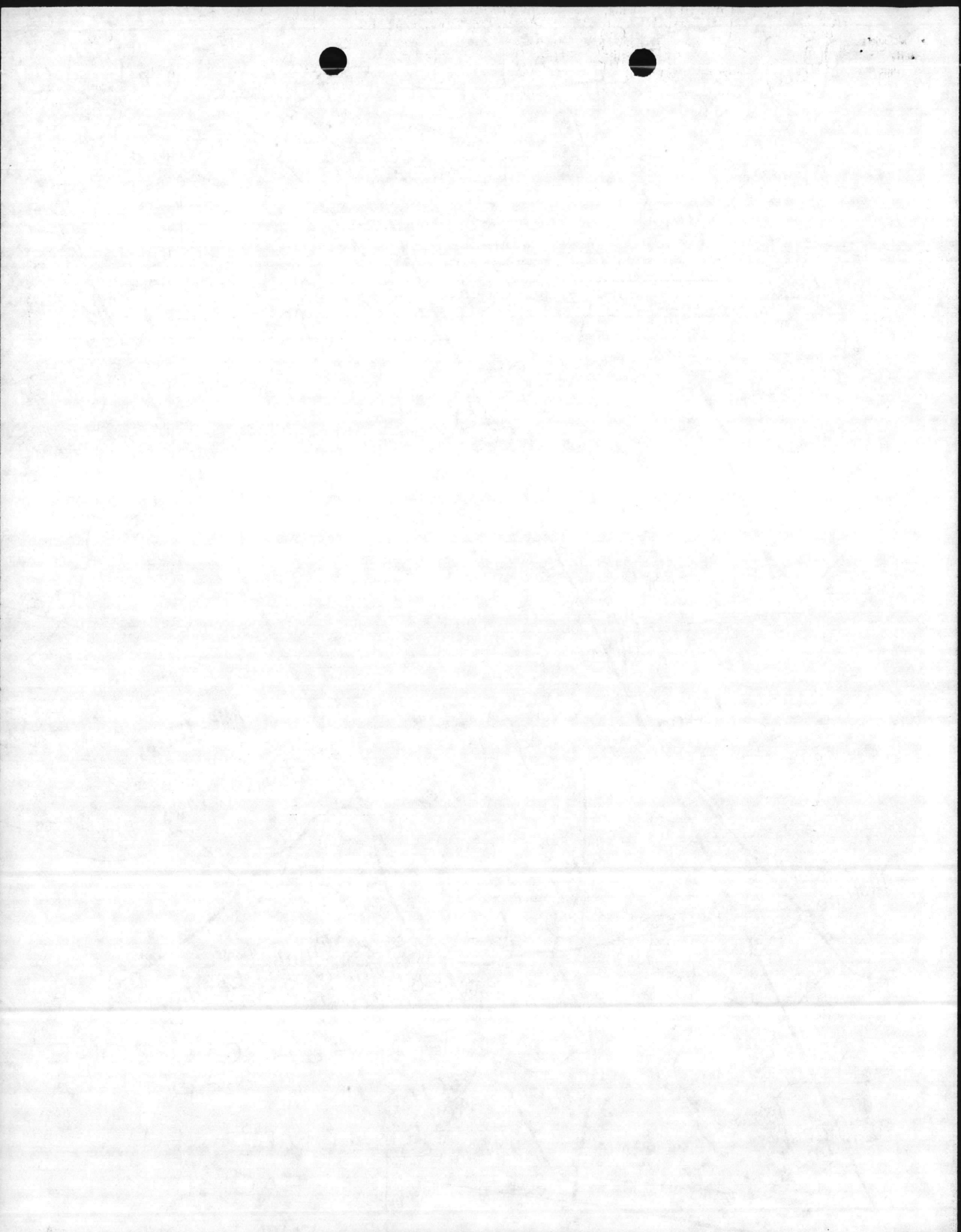
J. Shroy
 LCDR, CEC, USN
 MCBCLNG

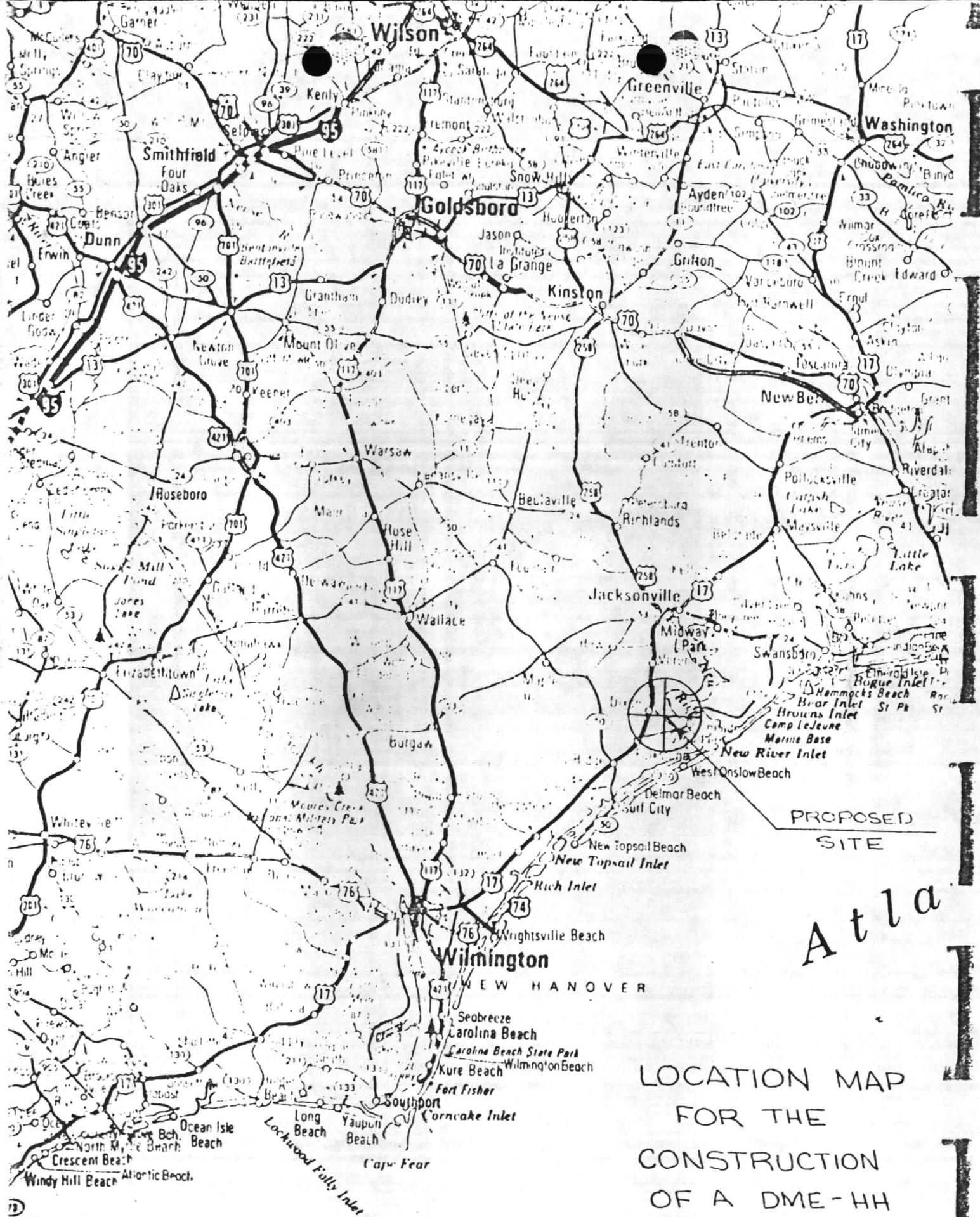




SEARCH ZONE
FOR
DME - HH
FACILITY

ENCL 1



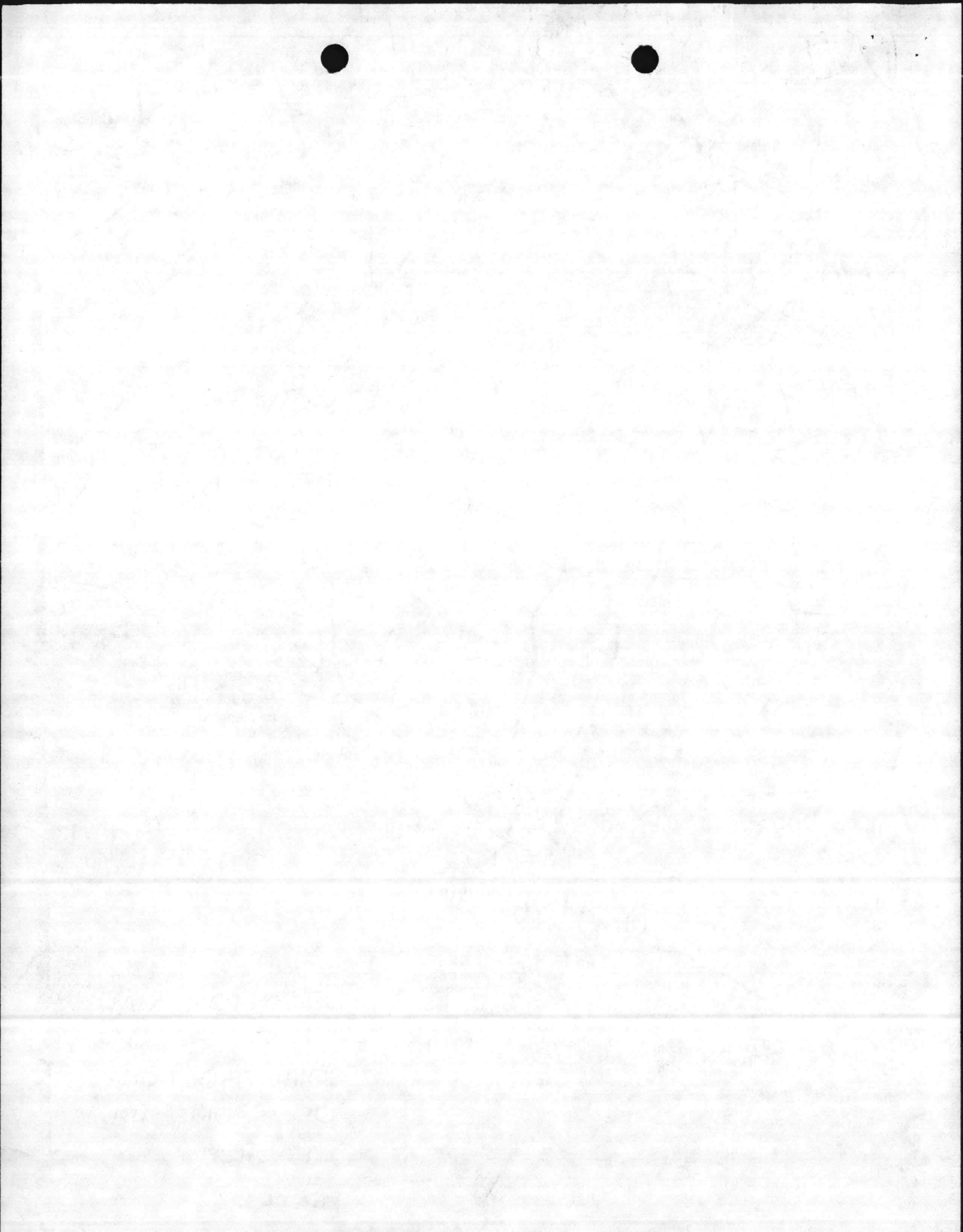


PROPOSED
SITE

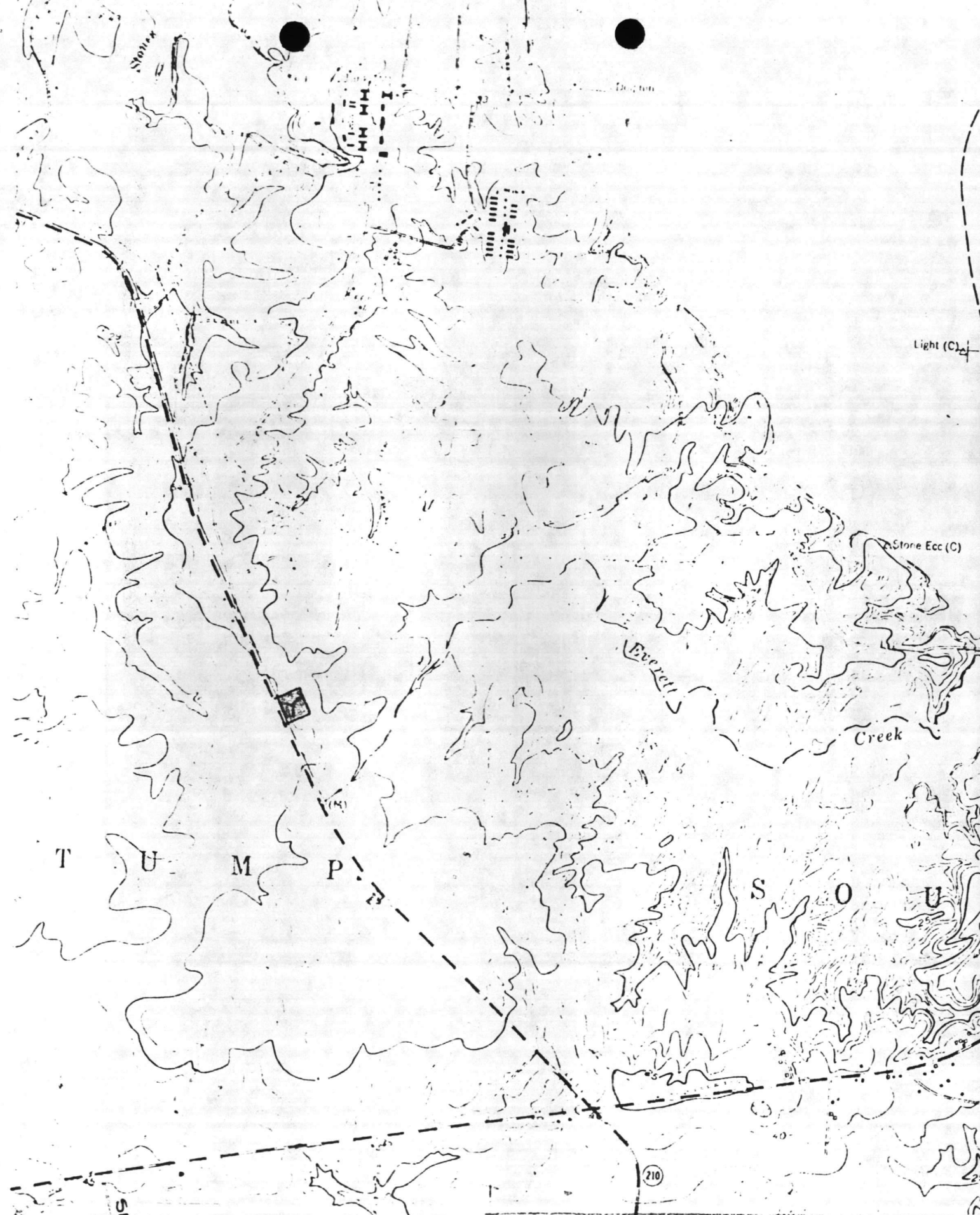
Atlas

LOCATION MAP
FOR THE
CONSTRUCTION
OF A DME-HH
FACILITY

ENCL 2



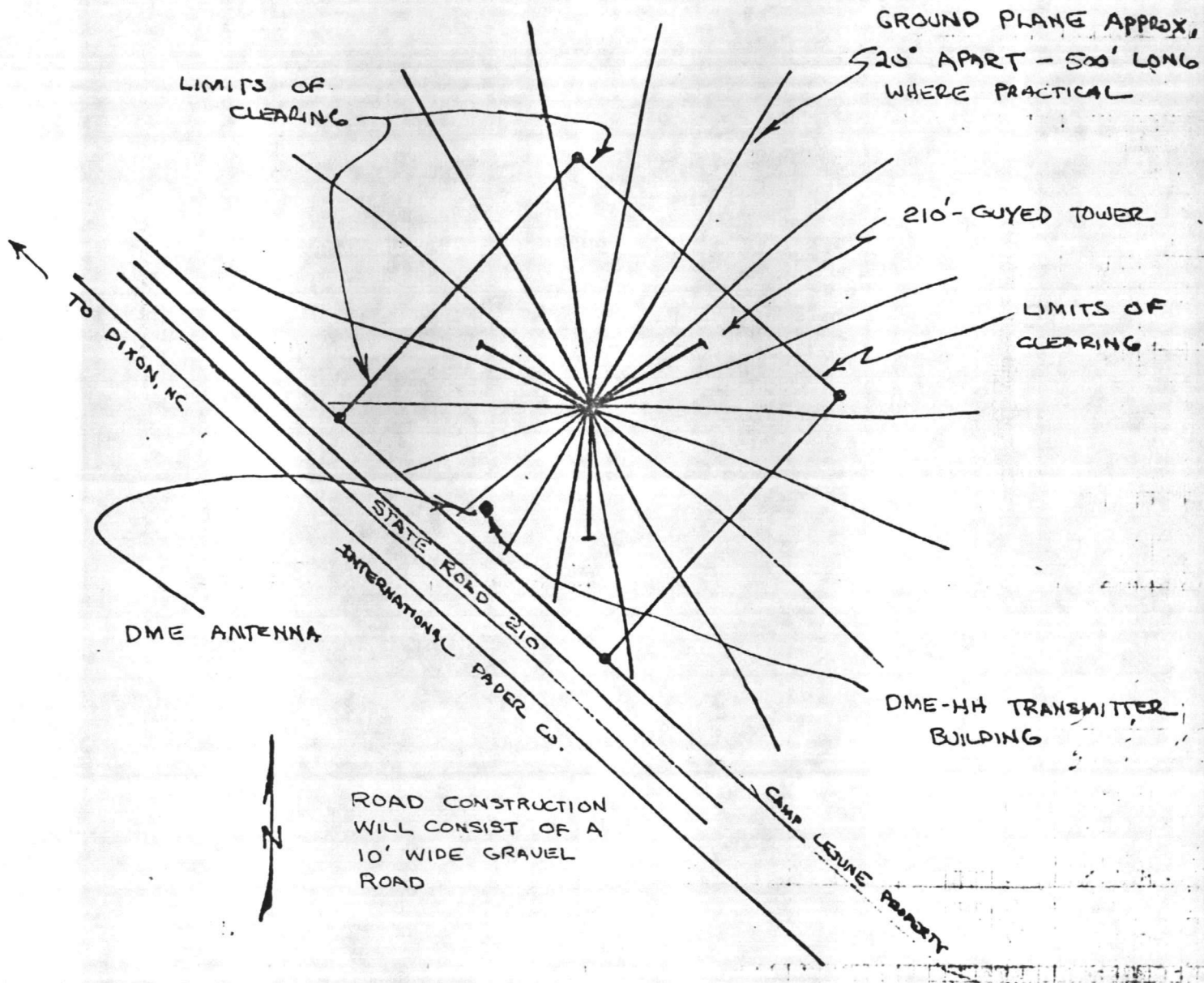
R I S E R V A T I O N



SITE LOCATION MAP
 FAA DME - HH FACILITY



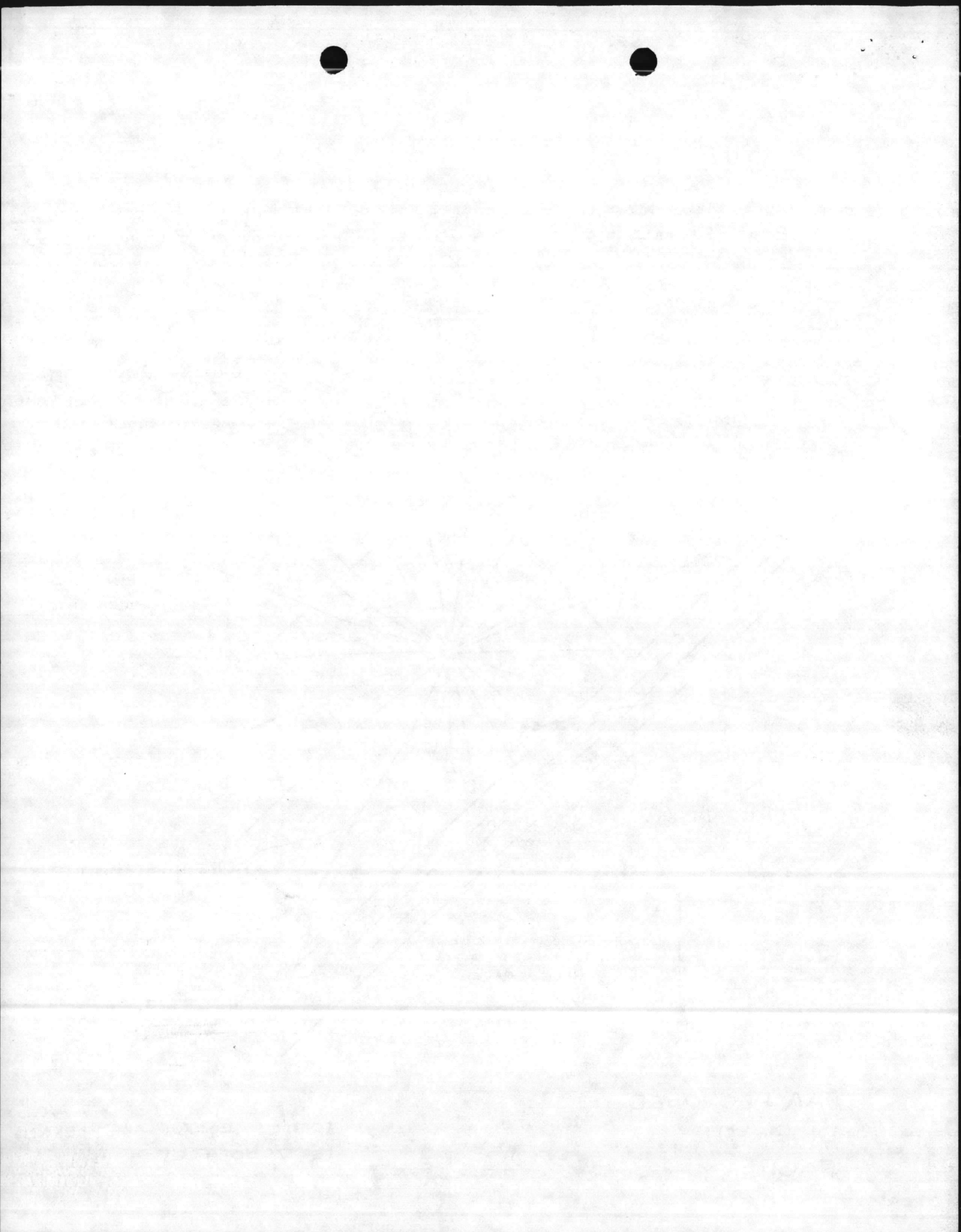
NOTE: TREE REMOVAL BEYOND THE 450' X 450' PLOT IS NOT REQUIRED. GROUND PLANE RADIALS MAY BE PLACED BESIDE AND BETWEEN EXISTING TREES



FAA PROPOSED
DME-HH
FACILITY

TOTAL GROUND PLANE LENGTH
IS 7900 FEET.

ENCL 4



MCAA F 8.12 NM

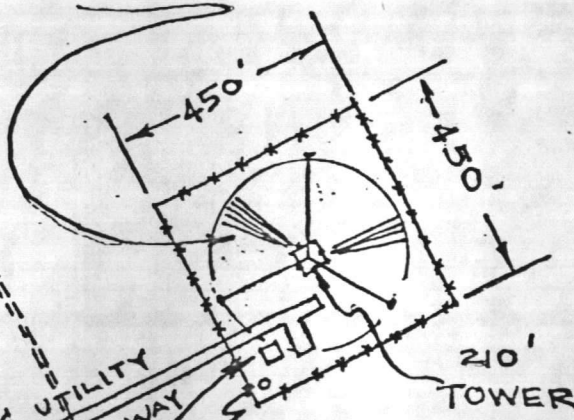
N

UNDERGROUND
RADIAL GROUND
SYSTEM - 40 RUNS,
9° APART, 200 FT
FROM TOWER BASE

PROPERTY LINE
SR 210

DEEP TRAIL

ROAD & UTILITY
RIGHT-OF-WAY



210'
TOWER

DME

XMITTER AND
E/G BLDG

PPROX. LOCATION
OF ONSLOW CO.
WATER TOWER ○

LAT = 34°-33'-55"
LON = 77°-26'-58"

SCALE = 1" = 400

PROPOSED LOCATION

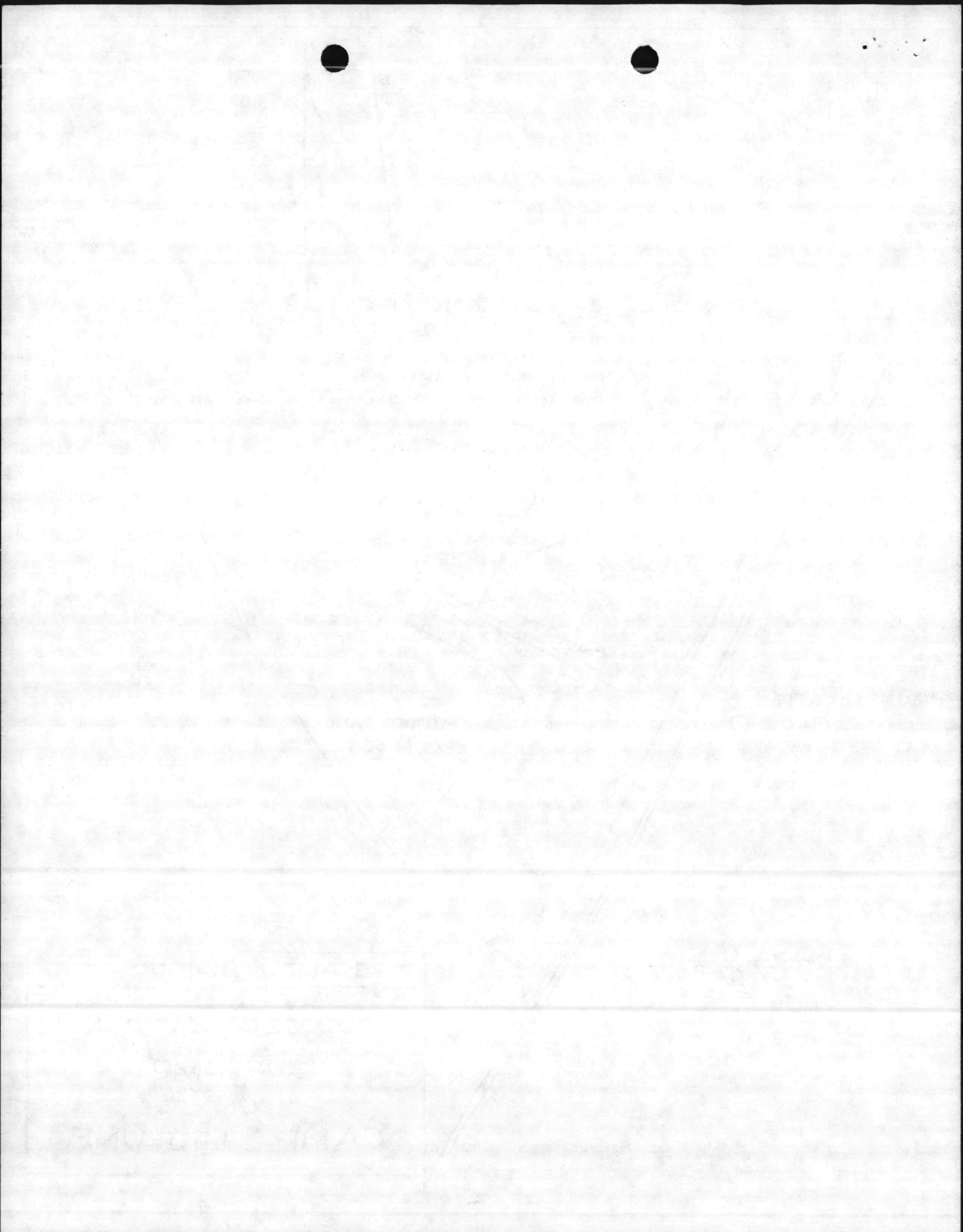
HH - DME

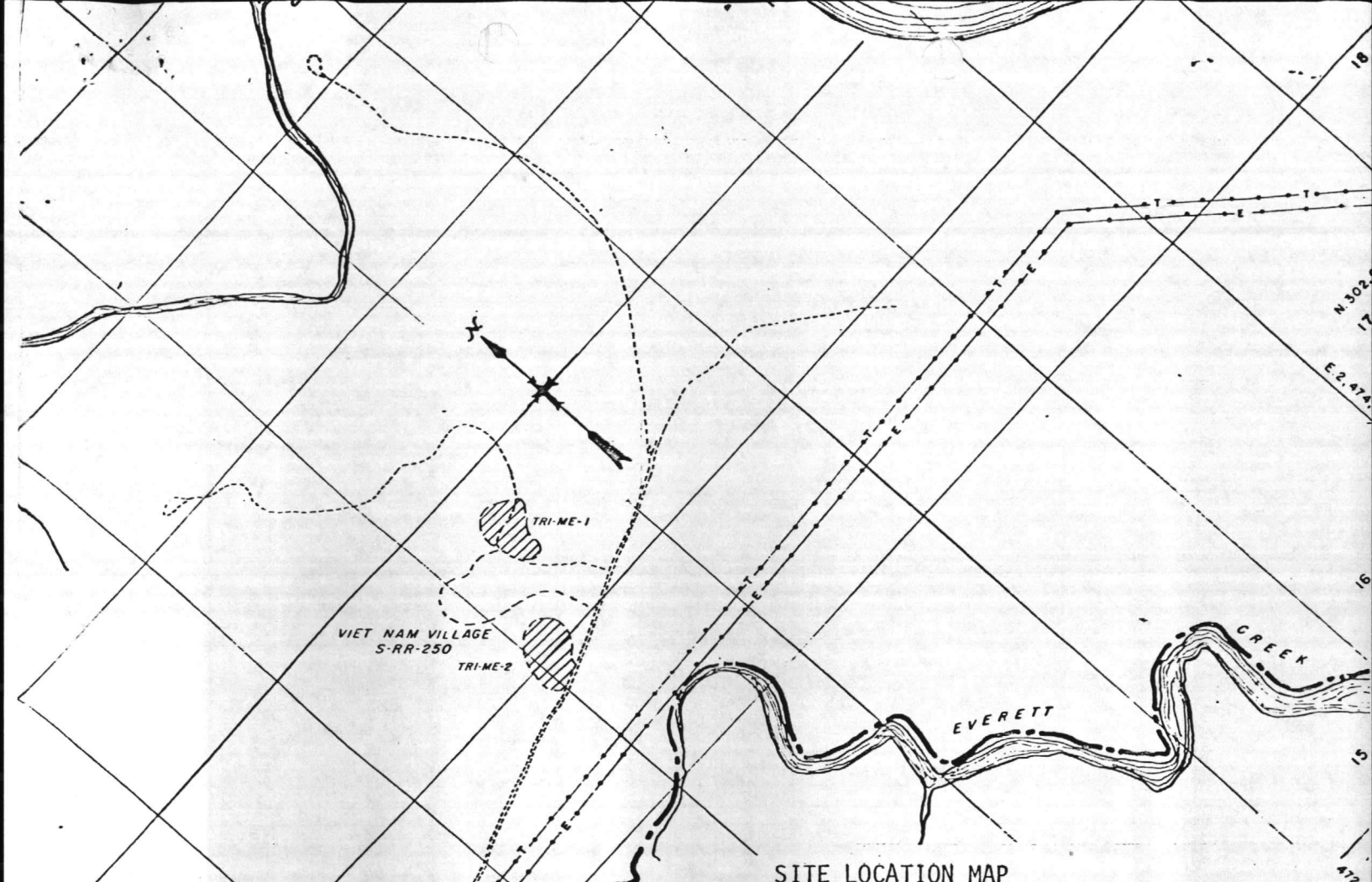
ON

CAMP LEJEUNE

SR 210

CAMP LEJEUNE PROPERTY



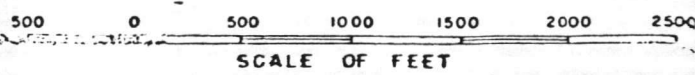


SITE LOCATION MAP
AVIATION NAVIGATIONAL AIDS

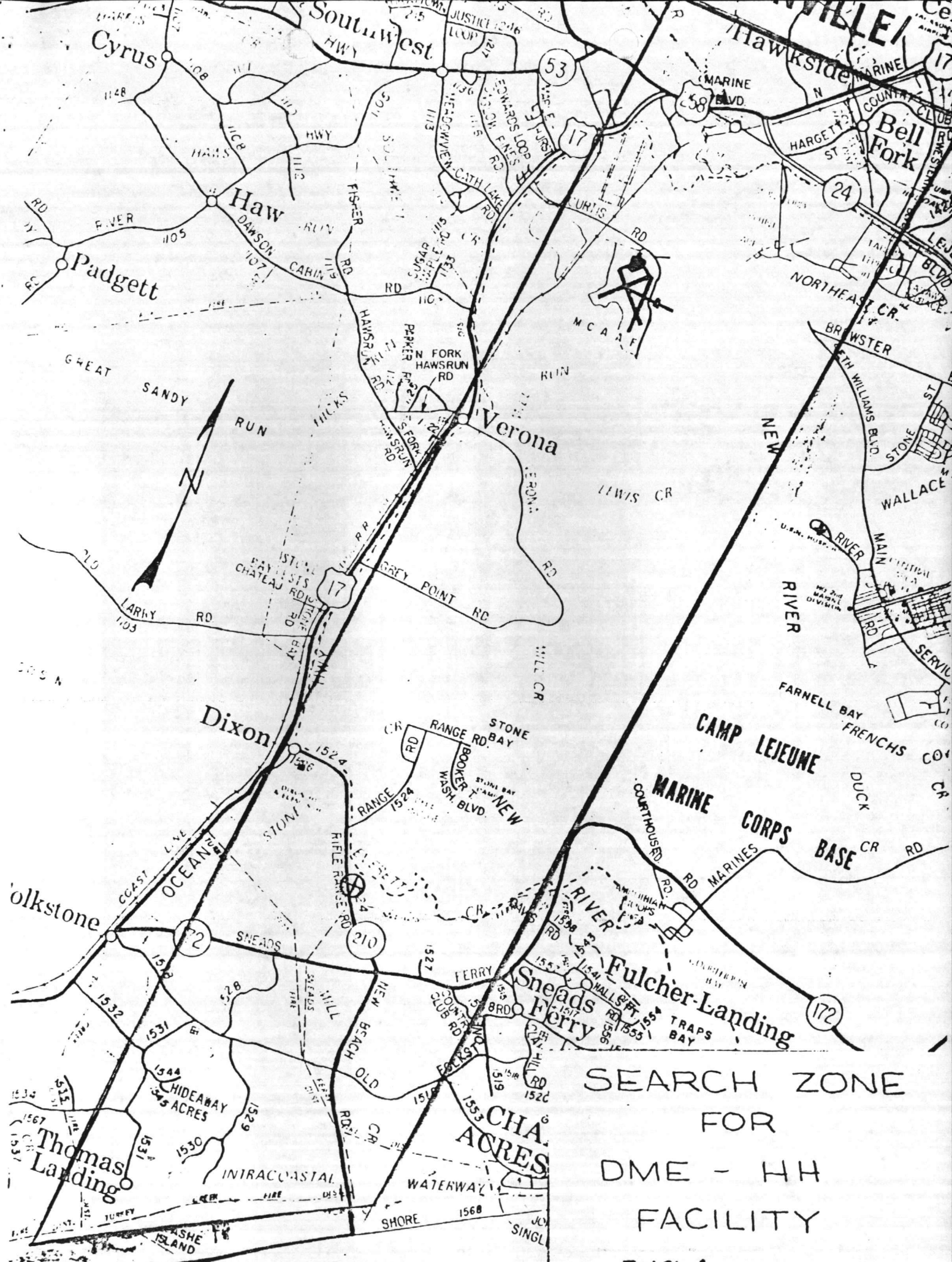
SITE APPROVED
HQMS
DATE 7/28/72
BY *W. J. [Signature]*

- EXPLANATION
- BUILDINGS
 - ASPHALT SURFACED
 - SHELL ROCK SURFACED
 - FENCE
 - O. H. POWER
 - O. H. TELEPHONE
 - EARTH ROAD

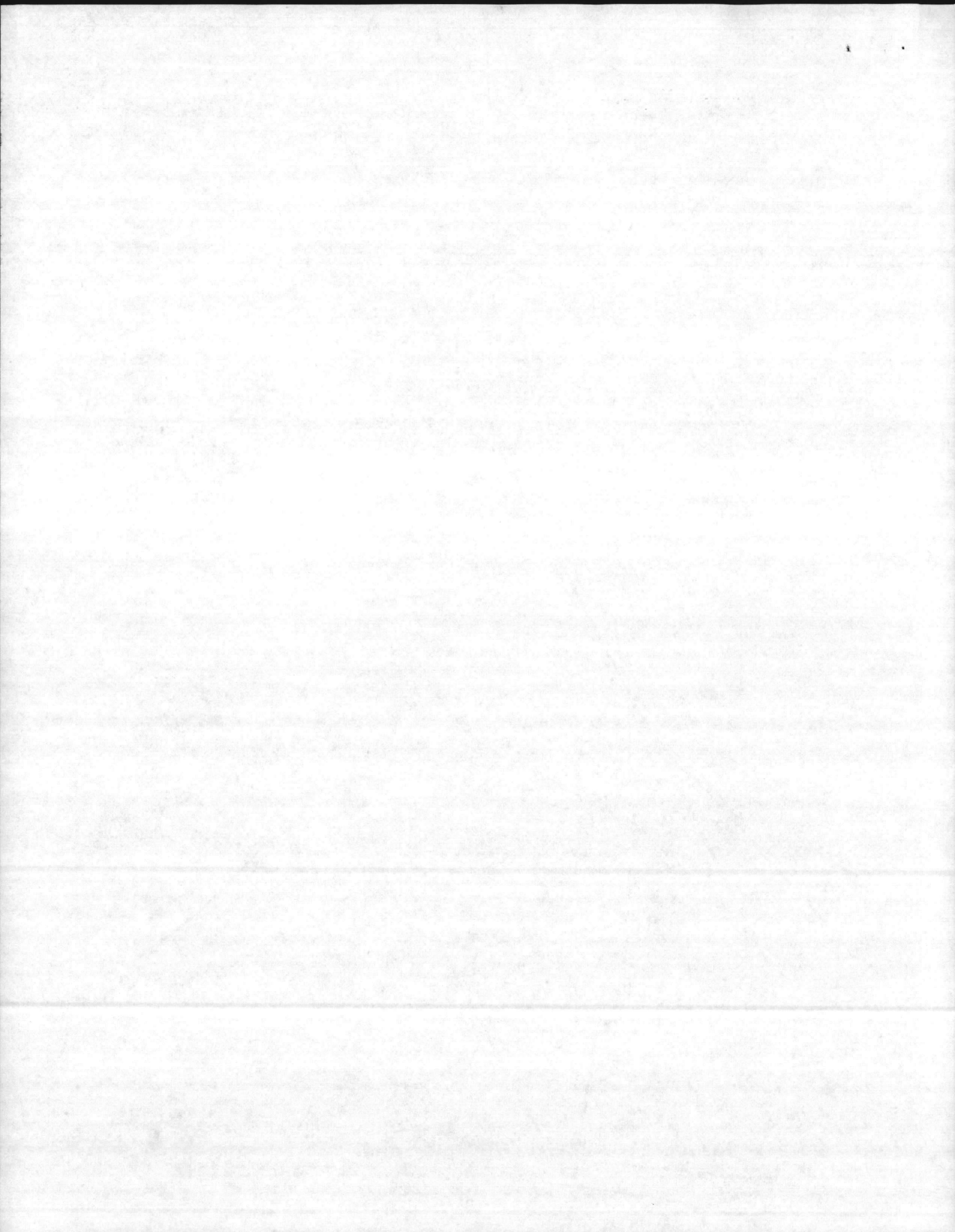
MAP OF
RIFLE RANGE AREA
CAMP LEJEUNE, NORTH CAROLINA
SHOWING CONDITIONS ON
JUNE 30, 1979

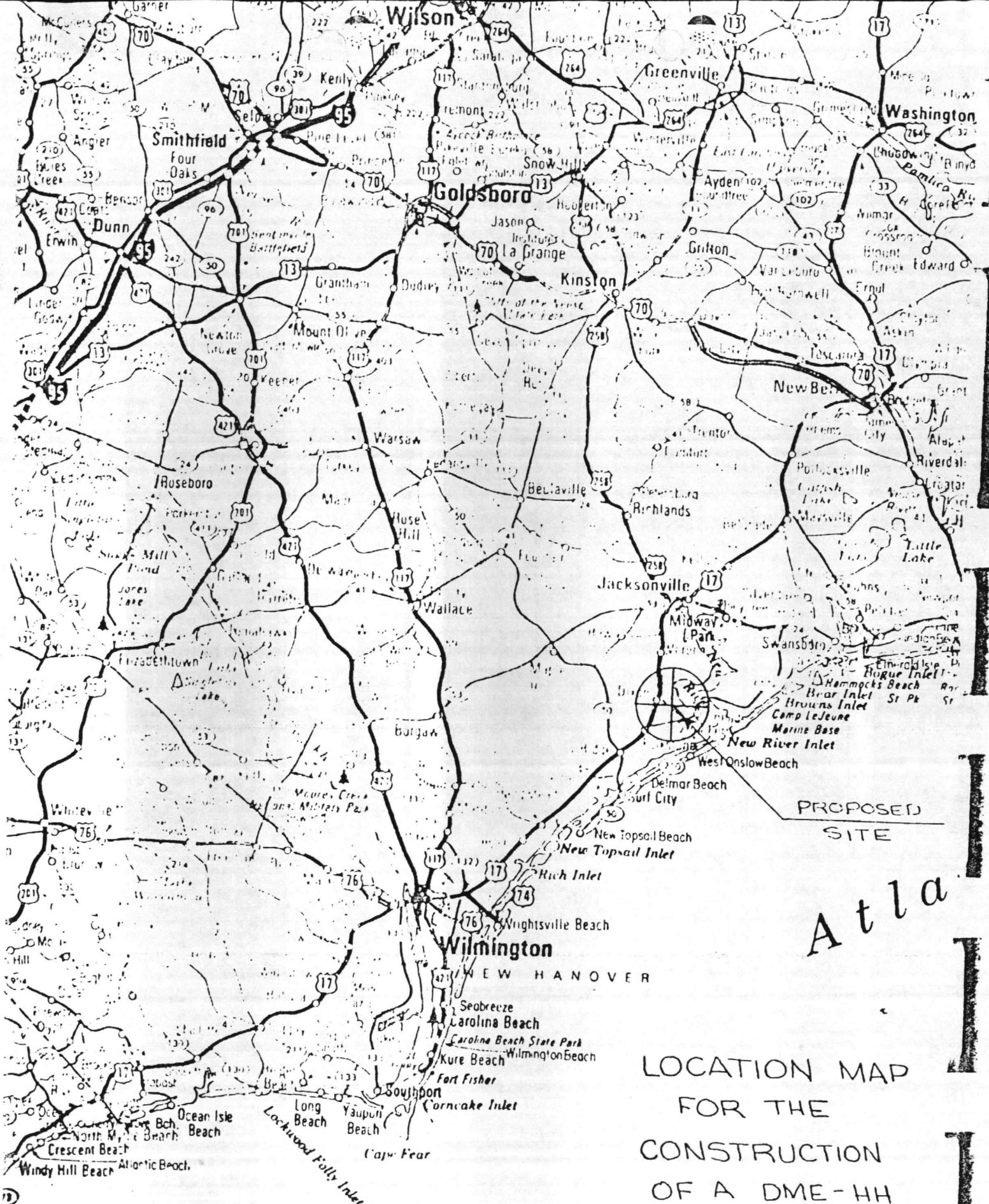


J. Johnson
LCDR, CEC, USN
MCBCLNG



SEARCH ZONE
FOR
DME - HH
FACILITY



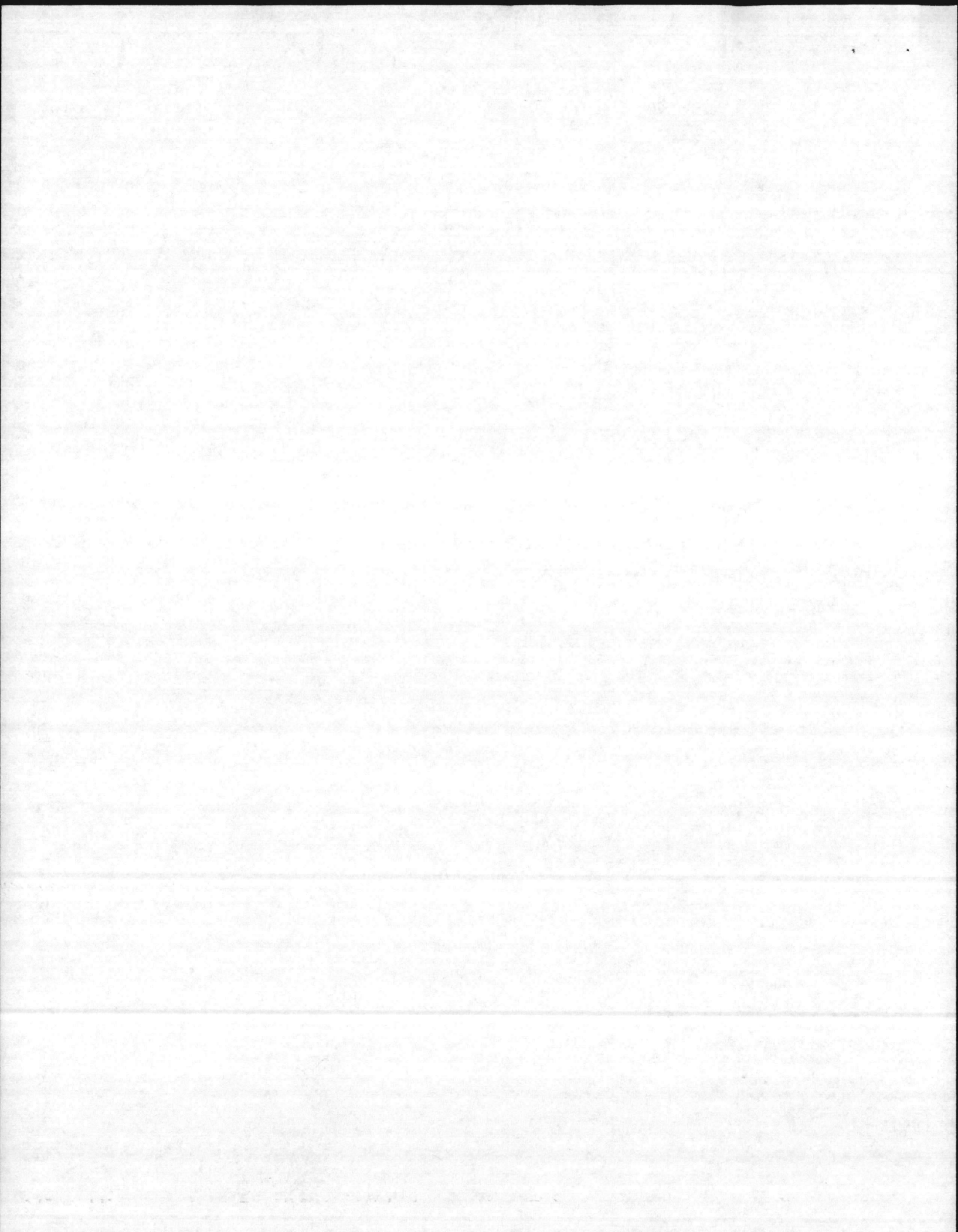


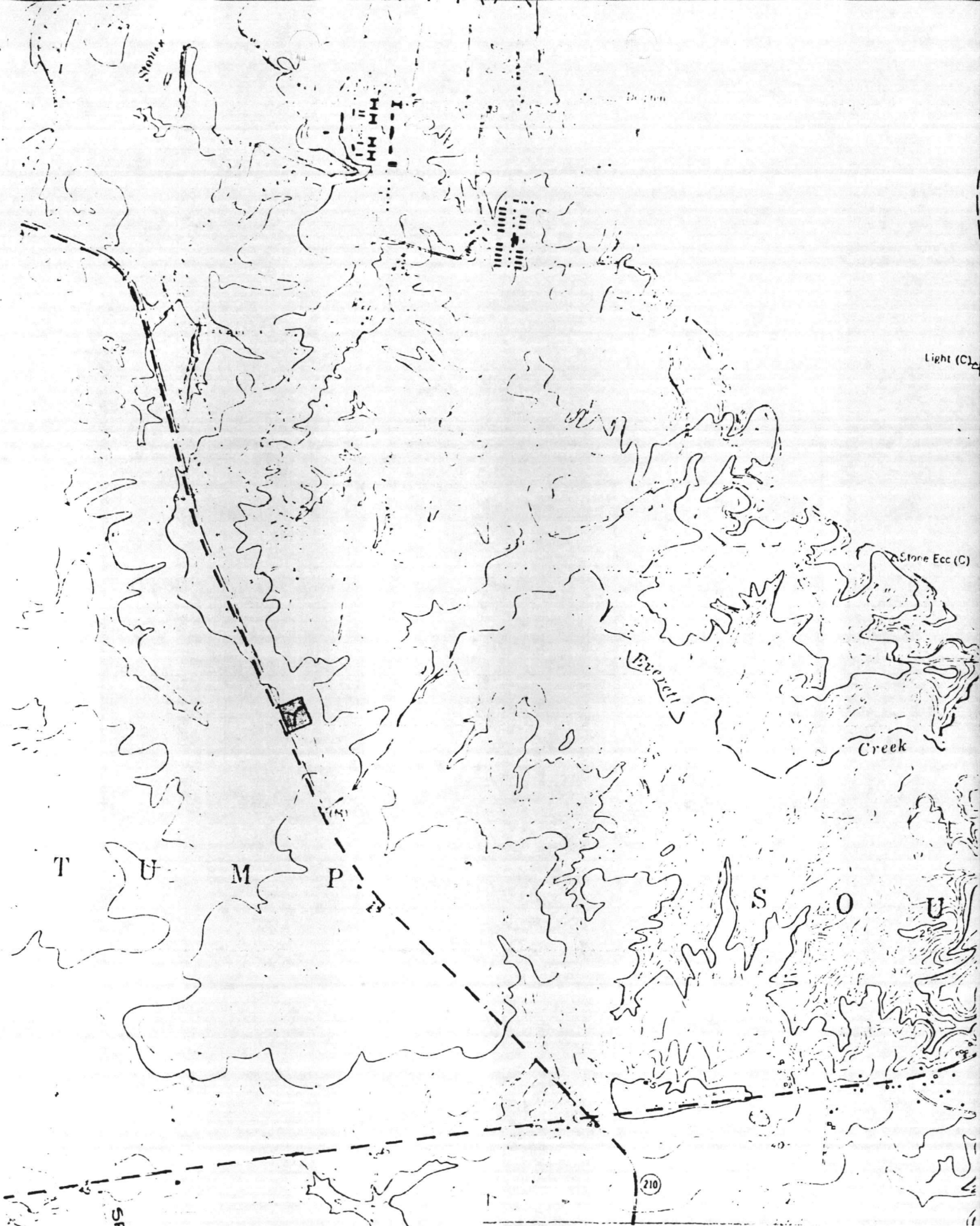
Atlanta

LOCATION MAP
FOR THE
CONSTRUCTION
OF A DME-HH
FACILITY

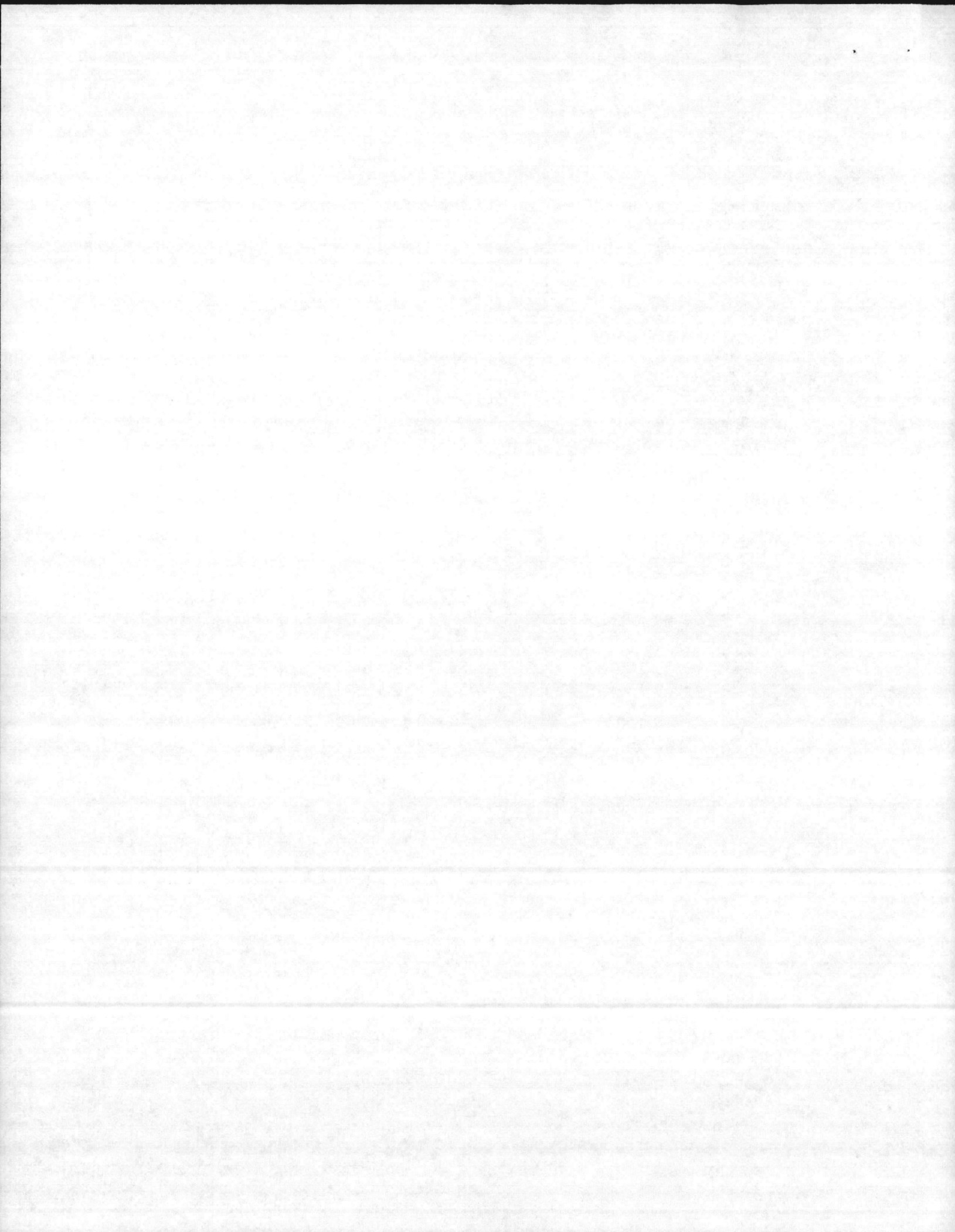
ENCL 2

Beach
State Park

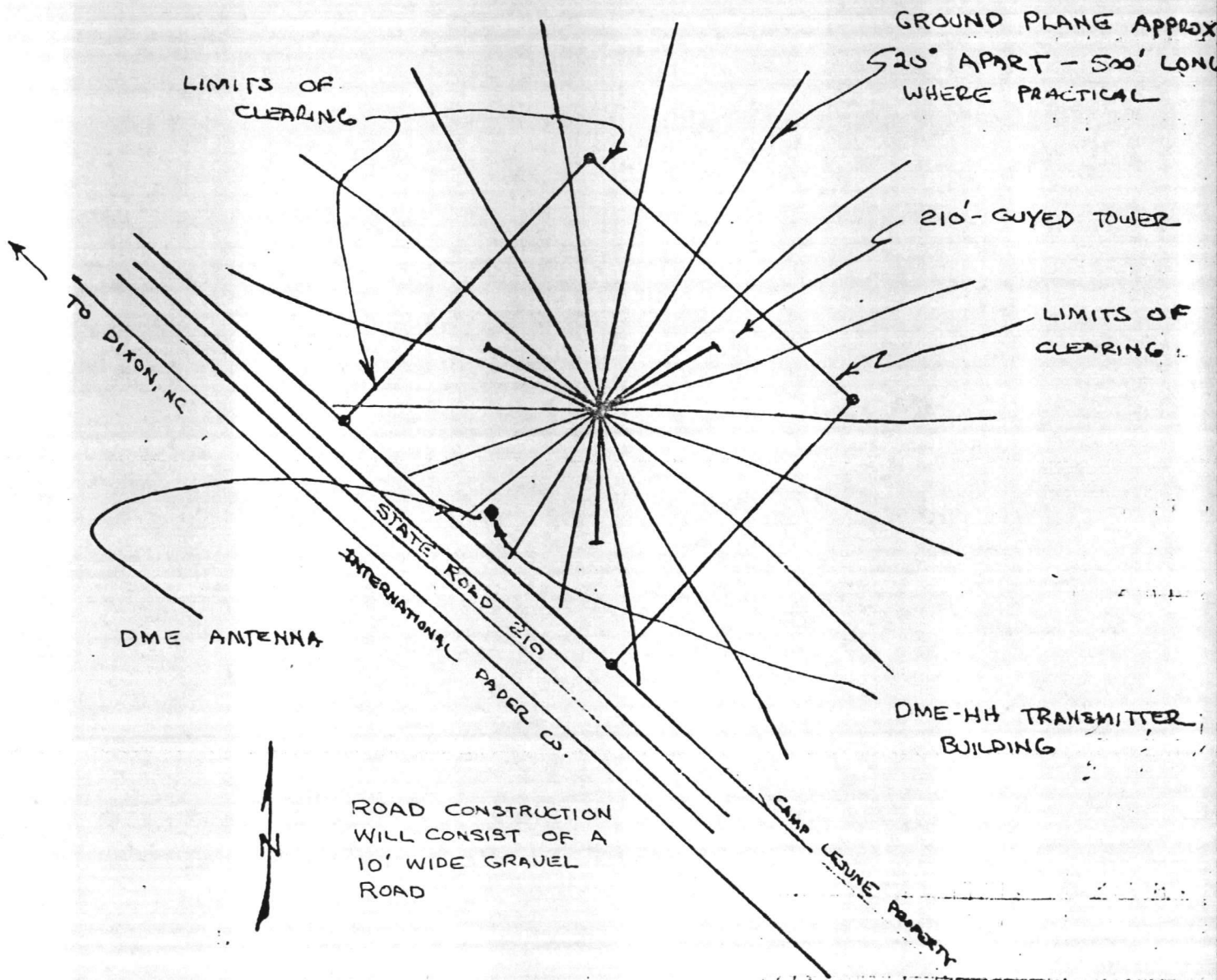




SITE LOCATION MAP
FAA DME - HH FACILITY



NOTE: TREE REMOVAL BEYOND THE 450' X 450' PLOT IS NOT REQUIRED. GROUND PLANE RADIALS MAY BE PLACED BESIDE AND BETWEEN EXISTING TREES

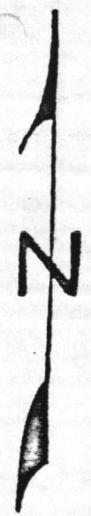


FAA PROPOSED
DME-HH
FACILITY

TOTAL GROUND PLANE LENGTH
IS 7900 FEET.

ENCL 4

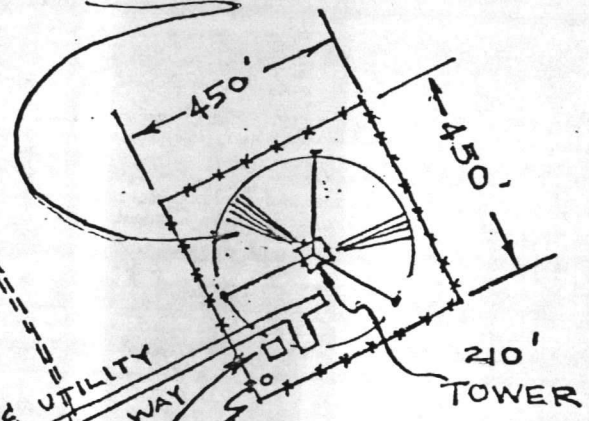
MCAAF B.12 NM



UNDERGROUND
RADIAL GROUND
SYSTEM - 40 RUNS,
90° APART, 200 FT
FROM TOWER BASE

PROPERTY LINE
SR 210

DEEP TRAIL



CAMP LEJEUNE PROPERTY

PROX. LOCATION
OF ONSLOW CO.
WATER TOWER ○

LAT = 34°-33'-55"
LON = 77°-26'-58"

SCALE = 1" = 400
PROPOSED LOCATION
HH - DME
ON
CAMP LEJEUNE.

SR 210

