

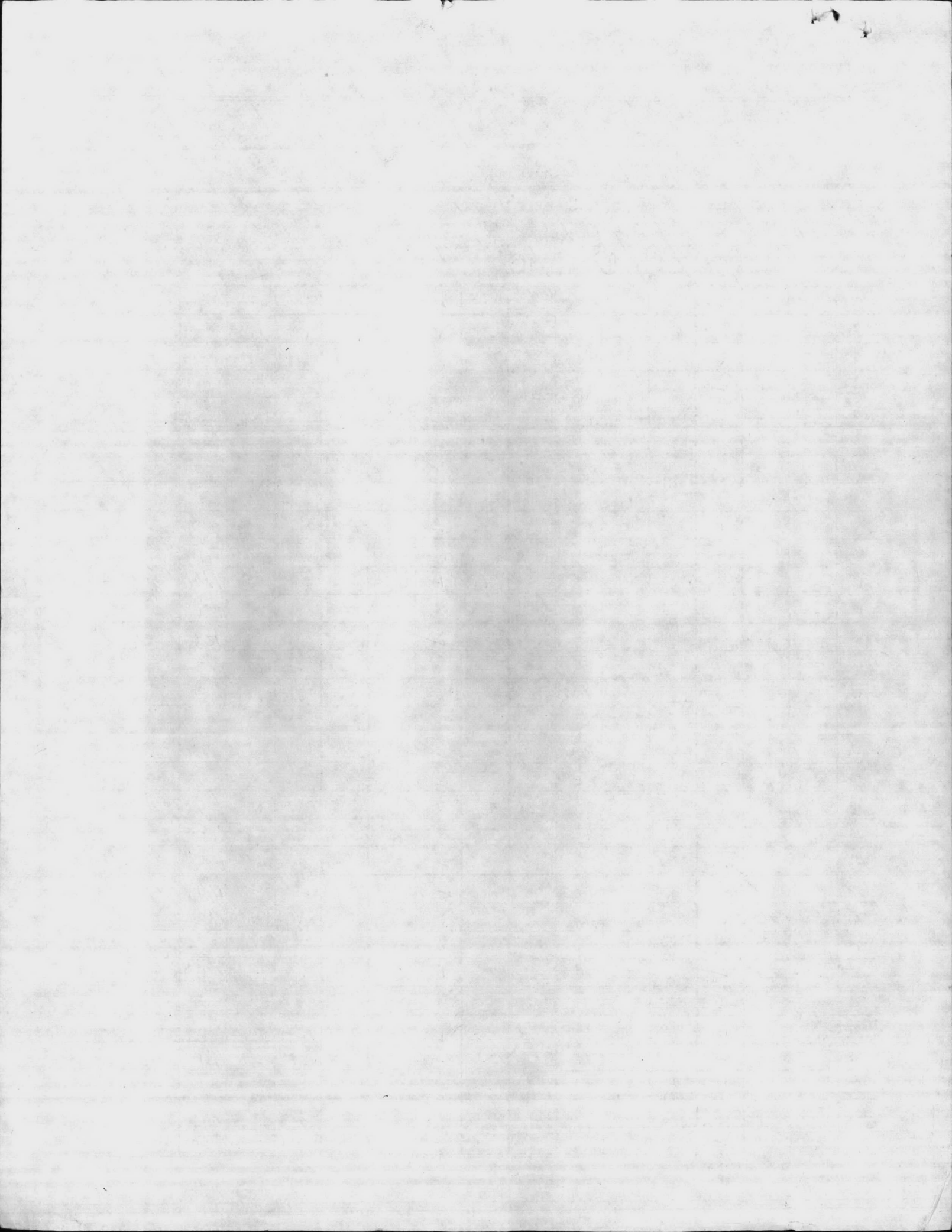
DAILY LOG FOR WELL PUMPS

MCBCL 11330/5 (REV 12-79)

BLDG. 47

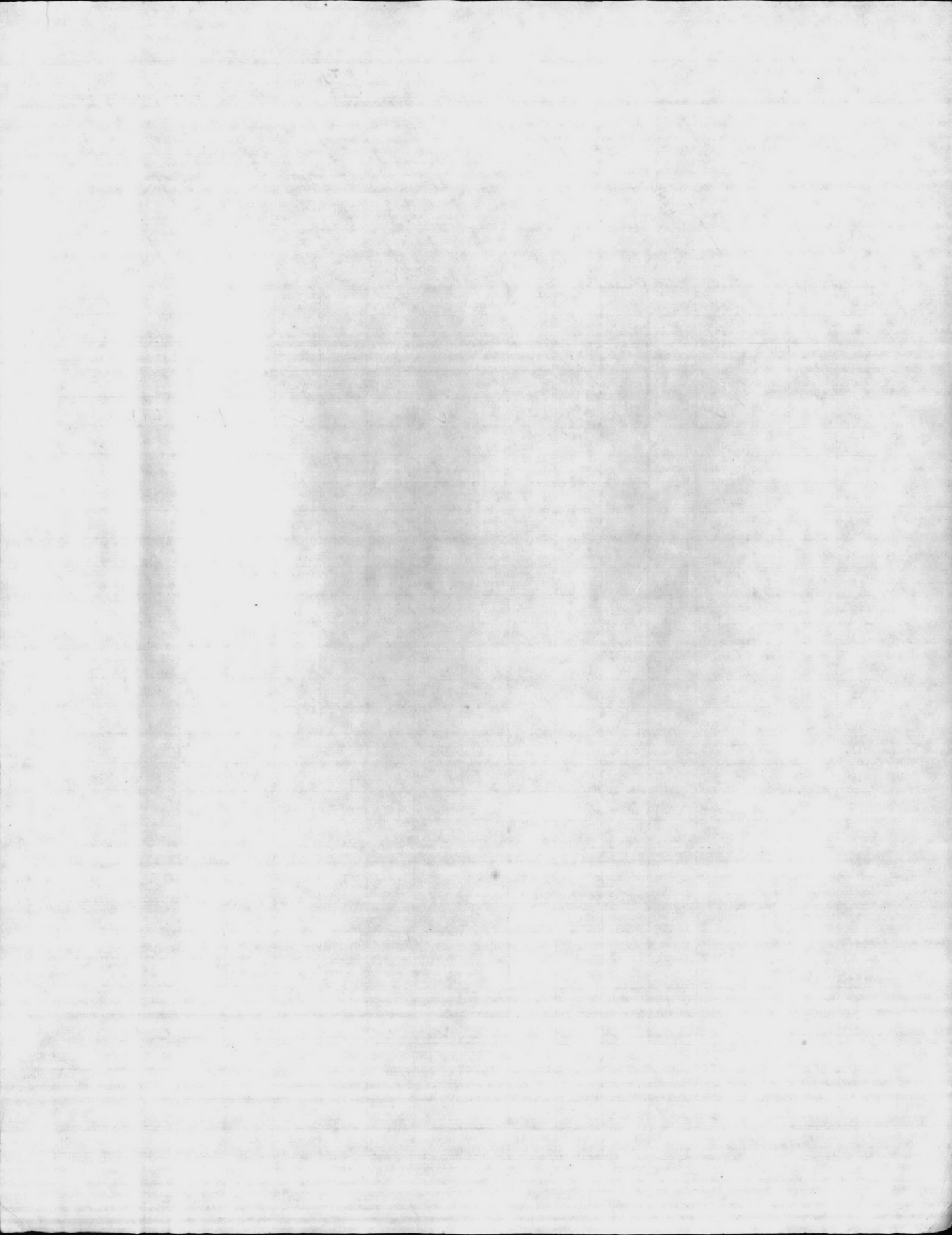
MONTH Dec, 1988

DATE	PUMP OILED	PUMP GREASED	PUMP CLEANED	STATIC	PUMPING LEVEL	G.P.M.	DRAW DOWN	PUMP ON	PUMP OFF	DIST. PRESSURE	BACK PRESSURE VALVE CLEANED & ADJUSTED	BLDG. CLEANED	GROUNDS CLEANED	TIME CHECKED	OPERATORS INITIALS
1	✓		✓					✓		✓	✓			0855	J.J.
2			✓					✓			✓			1030	R.H.
3			✓					✓			✓			0930	R.H.
4			✓					✓		-	-			0840	J.H.
5								✓						1210	W.
6								✓						1200	W.
7								✓						1230	W.
8								✓						1230	W.
9			✓					✓		-	-			0845	J.L.
10			✓					✓		-	-			0915	J.H.
11								✓		-	-			1100	J.
12								✓						1250	J.L.
13								✓						1230	G.
14			✓					✓			✓			1030	R.H.
15			✓					✓			✓			1500	R.H.
16								✓						1230	W.
17								✓						1230	W.
18			✓					✓			✓			1130	R.H.
19			✓					✓			✓			1000	R.H.
20			✓	54				✓			✓			0845	J.L.
21			✓					✓			✓			0930	J.H.
22			✓					✓			✓			1045	J.L.
23			✓					✓			✓			1130	R.H.
24			✓					✓			✓			0930	R.H.
25			✓					✓			-			0900	J.H.
26			✓					✓			-			0850	J.H.
27			✓					✓			✓			1000	L.K.
28			✓					✓			-			0845	J.H.
29			✓					✓			✓			0930	L.K.
30			✓					✓			✓			0900	J.H.
31			✓					✓			-			0845	J.L.



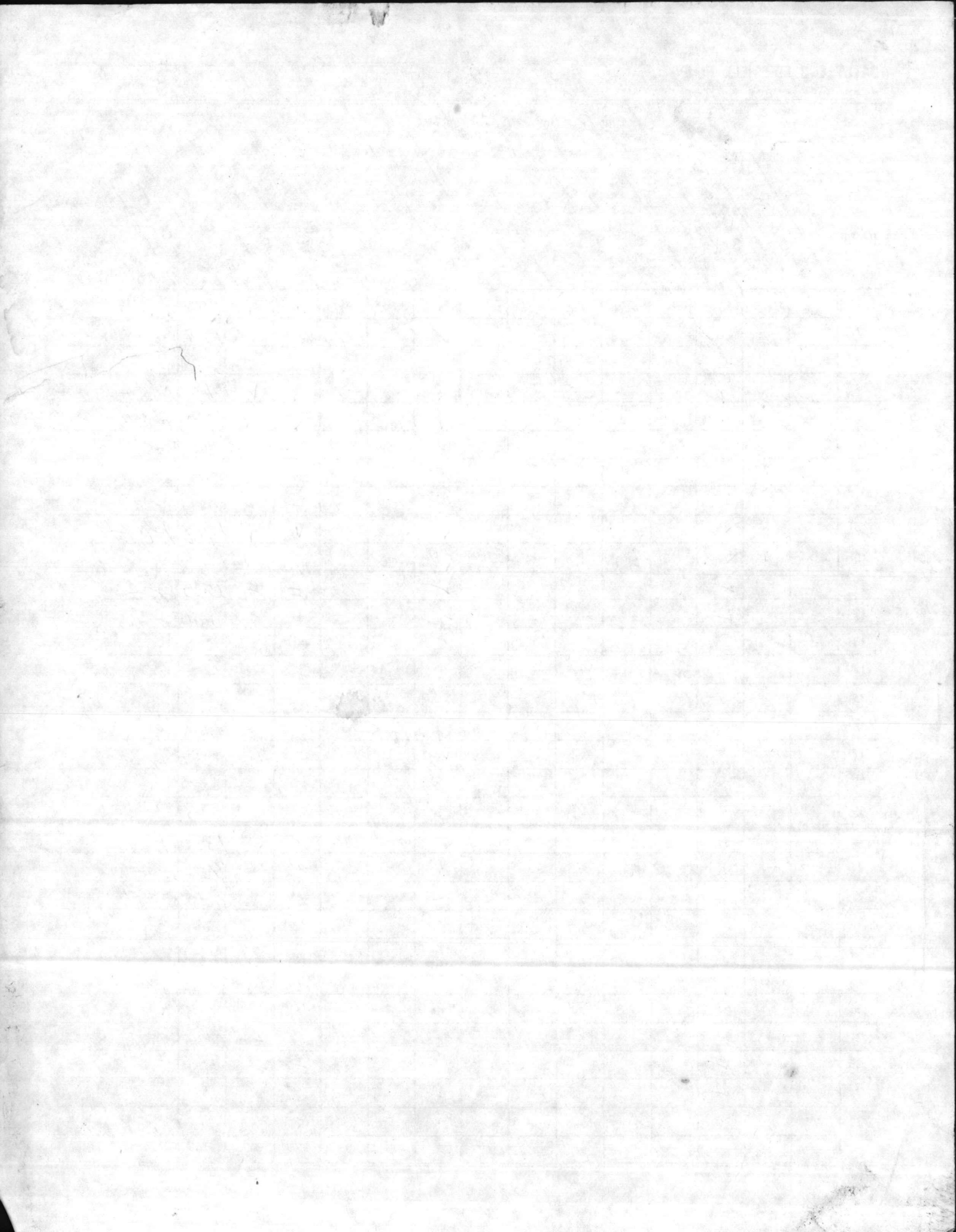


















DAILY LOG FOR WELL PUMPS

MCBCL 11330/5 (REV 12-73)

BLDG. **RR#47**

MONTH **MAY - 1988**

DATE	PUMP OILED	PUMP GREASED	PUMP CLEANED	STATIC	PUMPING LEVEL	G.P.M.	DRAW DOWN	PUMP ON	PUMP OFF	DIST. PRESSURE	BACK PRESSURE VALVE CLEANED & ADJUSTED	BLDG. CLEANED	GROUNDS CLEANED	TIME CHECKED	OPERATORS INITIALS
1		✓						✓			✓	✓	1030	RCH	
2		✓						✓			✓	✓	1300	KOH	
3		✓						✓			✓	✓	0800	GF	
4		✓						✓			✓	✓	0855	GF	
5		✓						✓			✓	✓	0900	GF	
6		✓						✓			✓	✓	1410	RCH	
7		✓						✓			✓	✓	1435	RCH	
8		✓						✓			✓	✓	0845	GF	
9		✓						✓			✓	✓	0850	GF	
10			55					✓					1100	W	
11	✓							✓					1240	W	
12							✓		26				1335	W	
13		✓					✓	✓	26		✓	✓	0850	GF	
14		✓					✓		26		✓	✓	0855	GF	
15								✓					1100	W	
16								✓			✓	✓	1210	W	
17	✓						✓		26		✓	✓	1136	RCH	
18	✓	✓					✓		26		✓	✓	1200	RCH	
19	✓	✓					✓		26		✓	✓	1220	RCH	
20					60		✓		26				1100	W	
21							✓		26				1200	W	
22		✓						✓			✓	✓	0930	RCH	
23		✓						✓			✓	✓	0900	RCH	
24		✓						✓			✓	✓	0850	GF	
25		✓						✓			✓	✓	0855	GF	
26		✓						✓			✓	✓	0905	GF	
27		✓						✓			✓	✓	1035	W	
28		✓						✓			✓	✓	0910	RCH	
29		✓						✓			✓	✓	0845	GF	
30		✓						✓			✓	✓	0900	GF	
31	✓							✓					1230	W	





DAILY LOG FOR WELL PUMPS

MCBCL 11330/5 (REV 12-73)

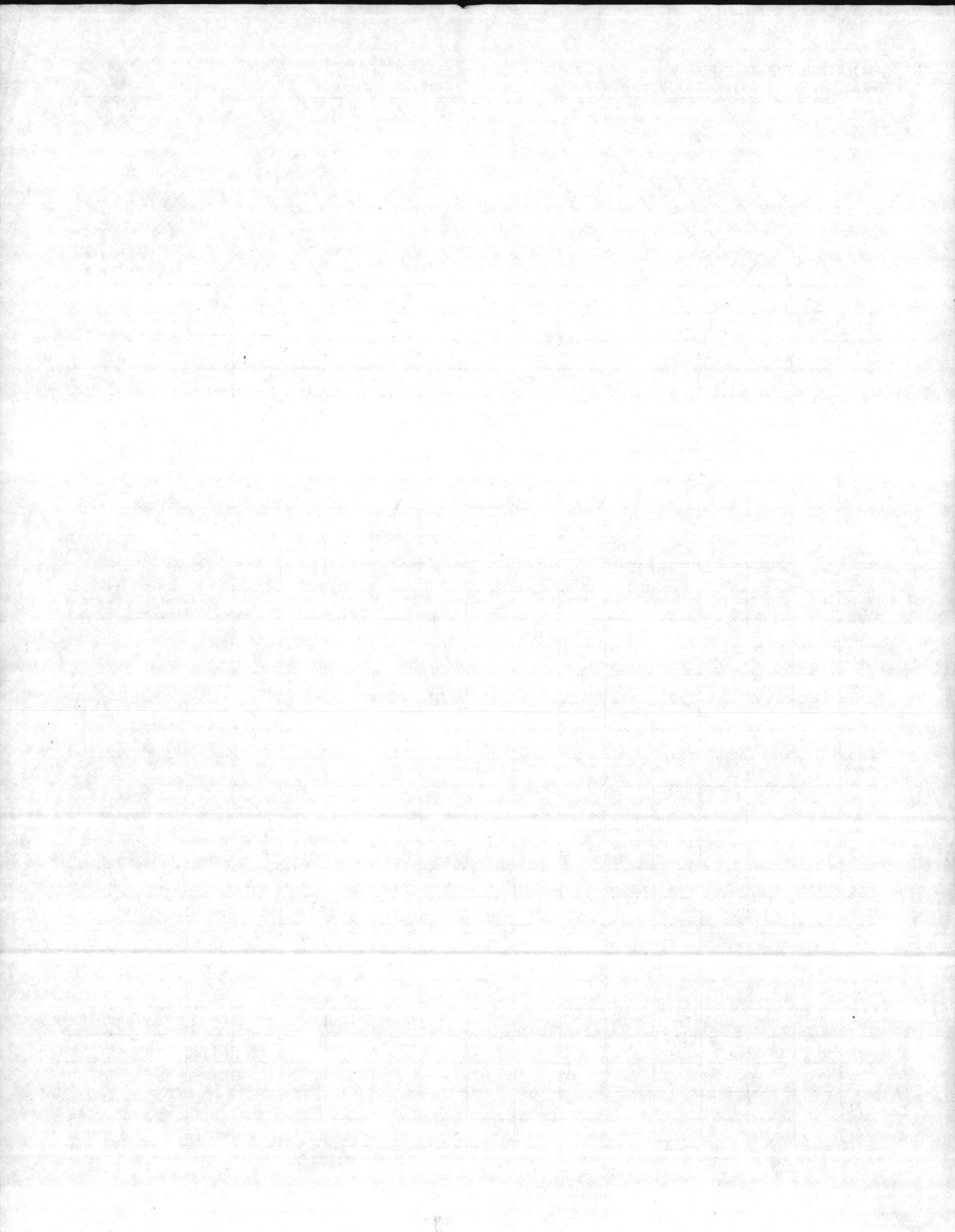
BLDG.

47

MONTH

Mar. 1988

DATE	PUMP OILED	PUMP GREASED	PUMP CLEANED	STATIC	PUMPING LEVEL	G.P.M.	DRAW DOWN	PUMP ON	PUMP OFF	DIST. PRESSURE	BACK PRESSURE VALVE CLEANED & ADJUSTED	FLDG. CLEANED	GROUNDS CLEANED	TIME CHECKED	OPERATORS INITIALS
1	✓		✓				✓	✓	26		✓	✓	0845	92	
2	✓		✓				✓		26		✓	✓	0845	92	
3	✓		✓				✓		26		✓	✓	0900		
4	✓		✓				✓		26		✓	✓	0915	RCH	
5	✓		✓				✓		26		✓	✓	0920	RCH	
6	✓		✓				✓		26		✓	✓	0845	92	
7	✓		✓				✓		26		✓	✓	0845	92	
8							✓		26				1110	W	
9	✓						✓		26				1210	W	
10							✓		26				1330	W	
11	✓		✓				✓		26		✓	✓	1345	92	
12	✓		✓				✓		26		✓	✓	1350	92	
13				60			✓		26				1350	W	
14								✓			✓	✓	1000	92	
15	✓		✓				✓		26		✓	✓	1510	RCH	
16	✓		✓				✓		26		✓	✓	0940	RCH	
17	✓		✓				✓		26		✓	✓	1215	RCH	
18								✓			✓	✓	1000	92	
19							✓		25		✓	✓	1100	92	
20	✓		✓				✓		25		✓	✓	1815	RCH	
21			✓				✓		25		✓	✓	1015	RCH	
22	✓		✓				✓		25		✓	✓	1030	92	
23	✓		✓				✓		25		✓	✓	0840	92	
24	✓		✓				✓		25		✓	✓	0910	92	
25	✓		✓				✓		25		✓	✓	1210	RCH	
26	✓		✓				✓		25		✓	✓	1300	RCH	
27	✓		✓				✓		25		✓	✓	1845	92	
28	✓		✓				✓		25		✓	✓	0855	92	
29								✓					1130	W	
30								✓					0940	W	
31			59					✓					1045	W	

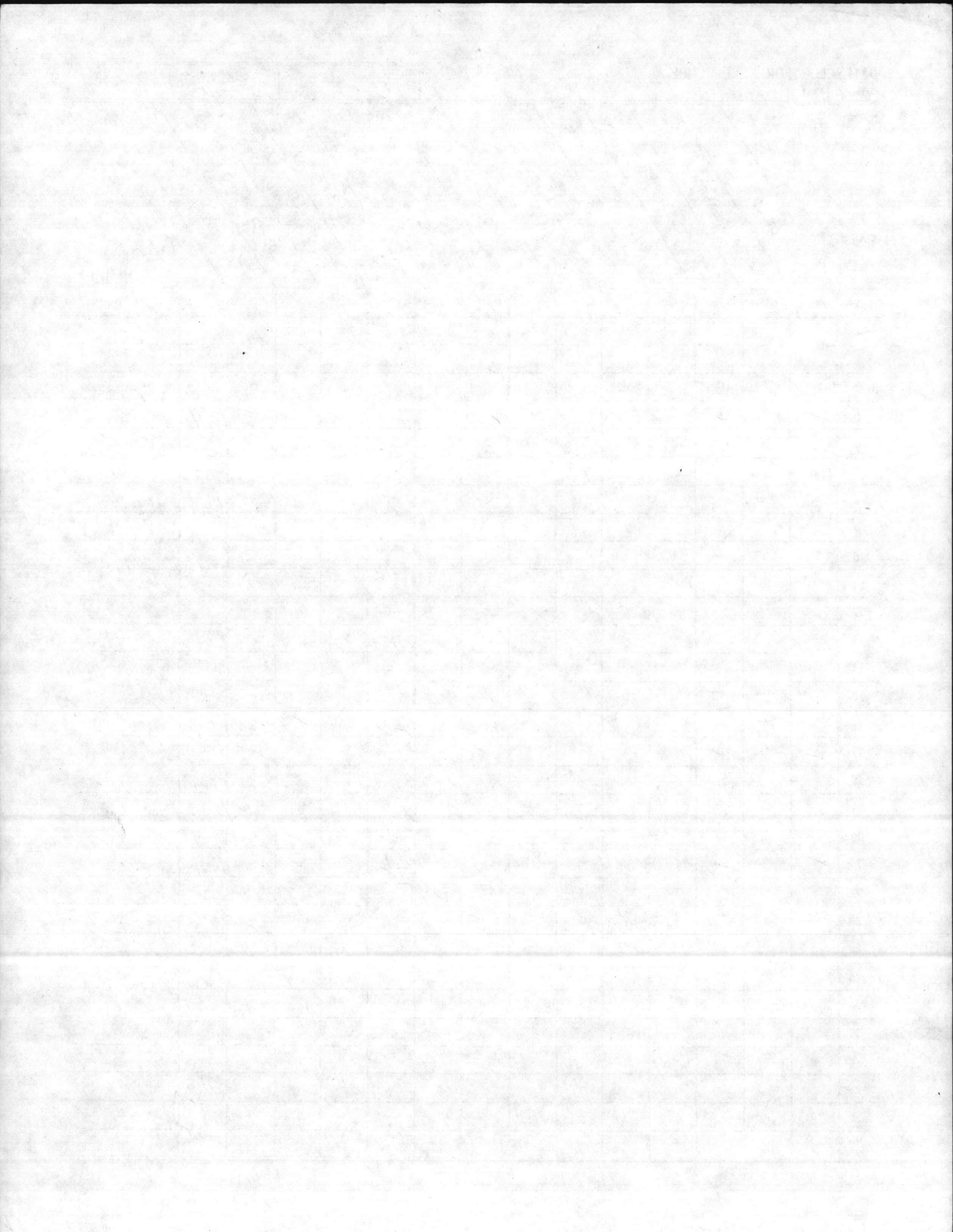














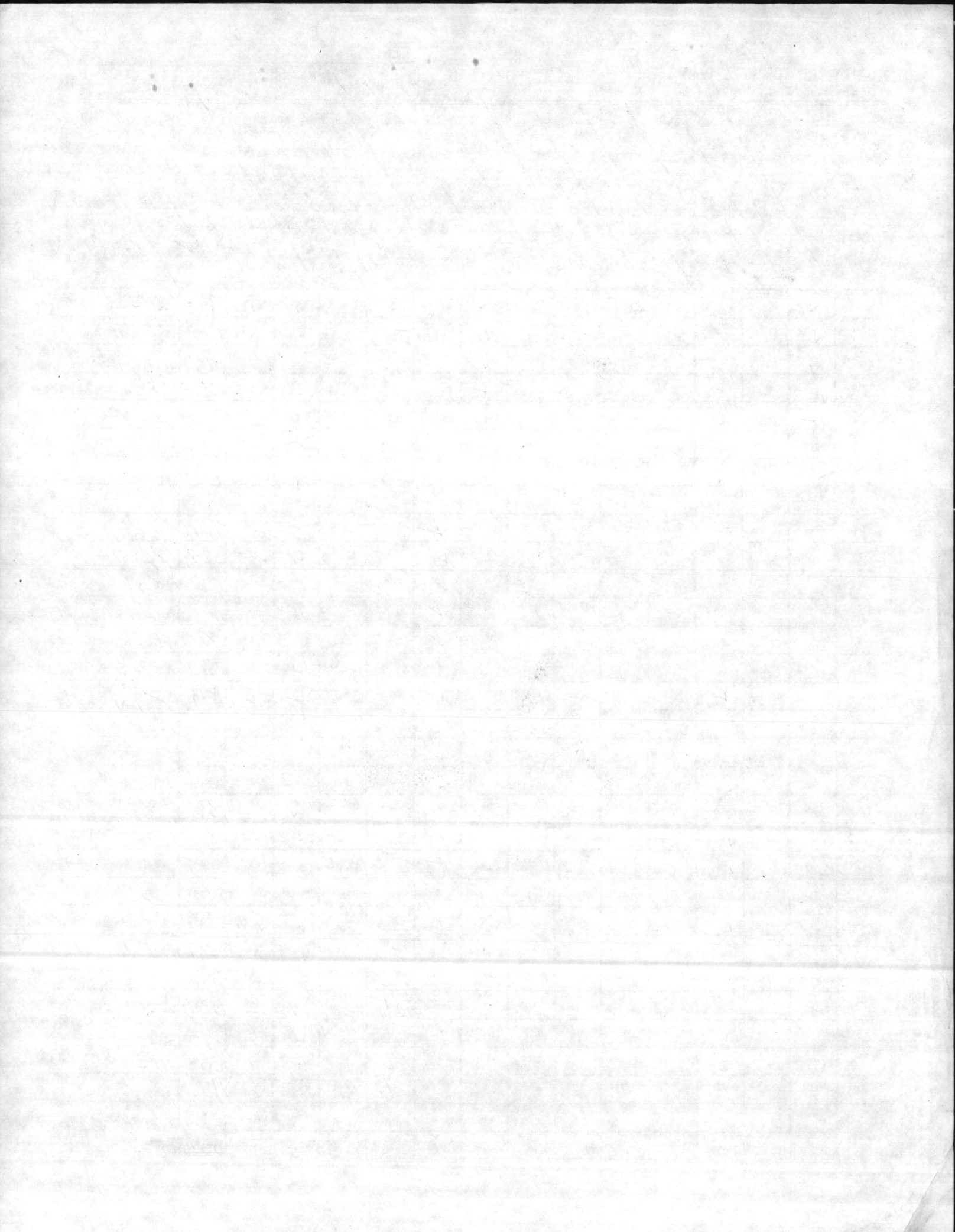
DAILY LOG FOR WELL PUMPS

MCBCL 11330/5 (REV 12-73)

BLDG. 47

MONTH Aug 87

DATE	PUMP OILED	PUMP GREASED	PUMP CLEANED	STATIC	PUMPING LEVEL	G.P.M.	DRAW DOWN	PUMP ON	PUMP OFF	DIST. PRESSURE	BACK PRESSURE CLEANED & ADJUSTED	BLDG. CLEANED	GROUNDS CLEANED	TIME CHECKED	OPERATORS INITIALS
1	✓			67			✓		26	✓	✓		1100		RCH
2	✓						✓		26	✓	✓		1100		RCH
3	✓						✓		26	✓	✓		1230		RCH
4	✓	✓					✓		26	✓	✓		0845		g.f.
5	✓	✓					✓		26	✓	✓		0855		g.f.
6	✓	✓					✓		26	✓	✓		0830		g.f.
7	✓	✓					✓		26	✓	✓		1630		RCH
8															
9								✓					0840		g.f.
10								✓			✓	✓	0855		g.f.
11								✓					1225		W
12								✓					1100		W
13								✓					1110		W
14		✓						✓			✓	✓	0845		g.f.
15		✓						✓			✓	✓	0830		g.f.
16			55					✓					1100		W
17								✓					0855		W
18		✓						✓			✓	✓	1230		RCH
19		✓						✓			✓	✓	1300		RCH
20		✓						✓			✓	✓	1030		RCH
21								✓					1155		W
22								✓					1200		W
23		✓					✓	✓	26	✓	✓		1230		RCH
24							✓	✓	26	✓	✓		1407		RCH
25	✓	✓					✓		26	✓	✓		0840		g.f.
26	✓	✓					✓		26	✓	✓		0850		g.f.
27	✓	✓					✓		26	✓	✓		0920		g.f.
28	✓	✓					✓		26	✓	✓		1630		RCH
29	✓	✓					✓		26	✓	✓		1130		RCH
30	✓	✓					✓		26	✓	✓		0855		g.f.
31	✓	✓					✓		26	✓	✓		0840		g.f.









DAILY LOG FOR WELL PUMPS

MCBCL 11330/5 (REV 12-73)

BLDG. RR#47 MONTH 1-1-87

DATE	PUMP OILED	PUMP GREASED	PUMP CLEANED	STATIC	PUMPING LEVEL	G.P.M.	DRAW DOWN	PUMP ON	PUMP OFF	DIST. PRESSURE	BACK PRESSURE VALVE CLEANED & ADJUSTED	BLDG. CLEANED	GROUNDS CLEANED	TIME CHECKED	OPERATORS INITIALS
1		✓					✓		28		✓	✓	1100		RAH
2							✓		28				110		
3							✓		28				15		
4								✓			✓	✓	1430		FD
5			58					✓			✓	-	1330		FD
6	✓	✓		53	5		✓		28		✓	-	0855		RAH
7	✓	✓					✓		28		✓	✓	0910		RAH
8	✓	✓					✓		28		✓	-	0915		RAH
9	✓	✓					✓		28		✓	✓	0910		RAH
10	✓	✓					✓		28		✓	-	0915		RAH
11	✓	✓					✓		28		✓	-	0840		RAH
12	✓	✓					✓		28		✓	✓	0910		RAH
13							✓		28				1030		RAH
14							✓		28				1045		RAH
15							✓		28				1030		RAH
16	✓						✓		28		✓	✓	0855		RAH
17	✓						✓		28		✓	✓	0845		RAH
18							✓		28				1110		RAH
19								✓					1200		RAH
20	✓	✓					✓		28		✓	✓	1600		RAH
21	✓	✓					✓		28		✓	✓	1100		RAH
22	✓	✓					✓		26		✓	✓	1430		RAH
23							✓		26				1150		RAH
24							✓		26				1030		RAH
25							✓		26				0900		RAH
26							✓		26				0900		RAH
27	✓	✓					✓		26		-	-	0825		RAH
28	✓	✓					✓		26		-	-	0840		RAH
29	✓	✓					✓		26		✓	✓	0830		RAH
30							✓		26		✓	✓	1030		RAH
31							✓		26		✓	✓	1100		RAH





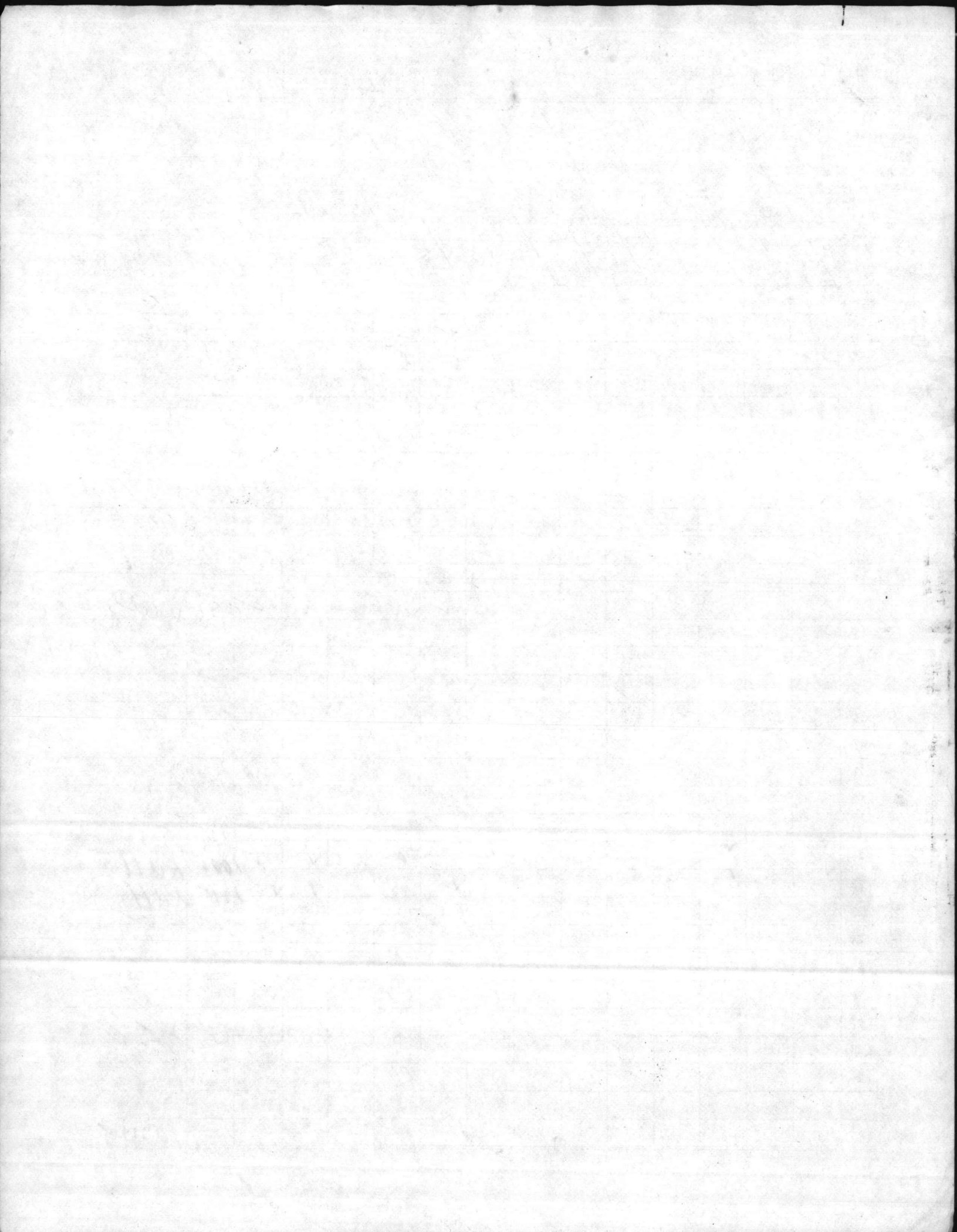
DAILY LOG FOR WELL PUMPS

MCBCL 11330/5 (REV 12-73)

BLDG. 47

MONTH March 1987

DATE	PUMP OILED	PUMP GREASED	PUMP CLEANED	STATIC	PUMPING LEVEL	G.P.M.	DRAW DOWN	PUMP ON	PUMP OFF	DIST. PRESSURE	BACK PRESSURE VALVE CLEANED & ADJUSTED	FLDG. CLEANED	GROUNDS CLEANED	TIME CHECKED	OPERATORS INITIALS
1								✓						1145	WU
2	✓							✓						1140	WU
3	✓						✓		24		✓	✓		1335	RCH
4	✓						✓		24		✓	✓		1500	RCH
5	✓						✓		24		✓	✓		1400	RCH
6								✓	24					1155	WU
7	✓							✓	24					1055	WU
8	✓						✓		24		✓	✓		1335	RCH
9	✓						✓		24					1130	RCH
10	✓						✓		24		✓	✓		0845	gh
11	✓						✓		24		✓	✓		0900	gh
12	✓							✓			✓			1057	WUWS
13							✓		24					0930	RCH
14							✓		24					1015	RCH
15	✓						✓		24		✓	✓		0850	gh
16	✓						✓		24		✓	✓		0840	gh
17							✓		24					1050	WU
18							✓		24					1110	WU
19							✓		24					1120	WU
20	✓						✓		24		✓	✓		0855	gh
21	✓						✓		24		✓	✓		0845	gh
22					61		✓		24					1120	WU
23							✓		24					1130	WU
24	✓						✓		24		✓	✓		0900	RCH
25	✓						✓		24		✓	✓		0830	RCH
26	✓						✓		24		✓	✓		1030	RCH
27							✓		24					1225	WU
28	✓						✓	✓						1305	WU
29	✓						✓		24		✓	✓		1430	RCH
30	✓						✓		24		✓	✓		1430	RCH
31	✓						✓		25					1230	WUWS



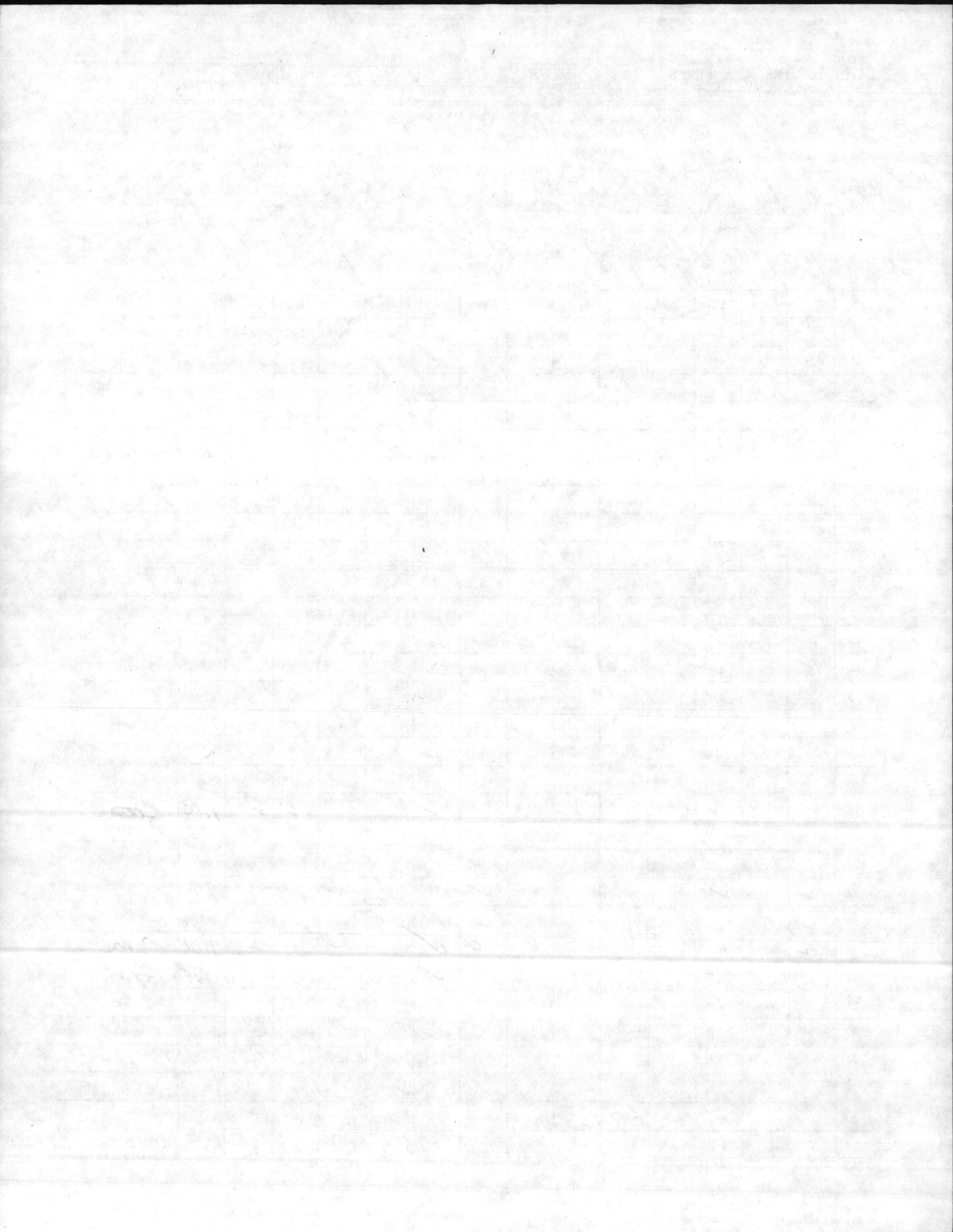
DAILY LOG FOR WELL PUMPS

MCBCL 11330/5 (REV 12-73)

BLDG. 47 MONTH May 1987

DATE	PUMP OILED	PUMP GREASED	PUMP CLEANED	STATIC	PUMPING LEVEL	G.P.M.	DRAW DOWN	PUMP ON	PUMP OFF	DIST. PRESSURE	BACK PRESSURE VALVE CLEANED & ADJUSTED	BLDG. CLEANED	GROUNDS CLEANED	TIME CHECKED	OPERATORS INITIALS
1		✓						✓			✓	✓	0910		
2		✓						✓			✓	✓	1540	RL	
3								✓			✓	✓	1110	W	
4								✓					1130	W	
5		✓						✓			✓	✓	1535	RH	
6		✓						✓			✓	✓	1400	RH	
7		✓						✓			✓	✓	0945	RH	
8								✓					1130	W	
9	✓		55					✓					1145	W	
10		✓						✓			✓	✓	1430	RH	
11								✓			✓	✓	1030	RPD	
12	✓	✓						✓			-	-	1530	RL	
13	✓	✓						✓			-	-	1855	RL	
14	✓	✓						✓			✓	-	0858	RL	
15								✓			✓	✓	1040	RPD	
16		✓						✓			✓	✓	1100	RH	
17								✓					1150	W	
18							✓	25					1130	W	
19		✓						✓			✓	✓	1100	GO	
20								✓					1210	W	
21							✓	26					1130	W	
22	✓	✓					✓	26		✓	✓	✓	1530	RL	
23	✓	✓					✓	26		-	-	-	0840	RL	
24	✓	✓					✓	26		-	✓	-	1100	Gm	
25	✓	✓						✓		-	-	-	0940	Gm	
26		✓						✓			✓	-	0900	RH	
27		✓					✓	✓			✓	✓	0900	RH	
28		✓					✓	✓			✓	✓	1630	RH	
29							✓	✓	26				1007	W	
30					60		✓	✓	26				1020	W	
31	✓	✓					✓	✓	26		✓	✓	1330	RH	





DAILY LOG FOR WELL PUMPS

MCBCL 11330/5 (REV 12-73)

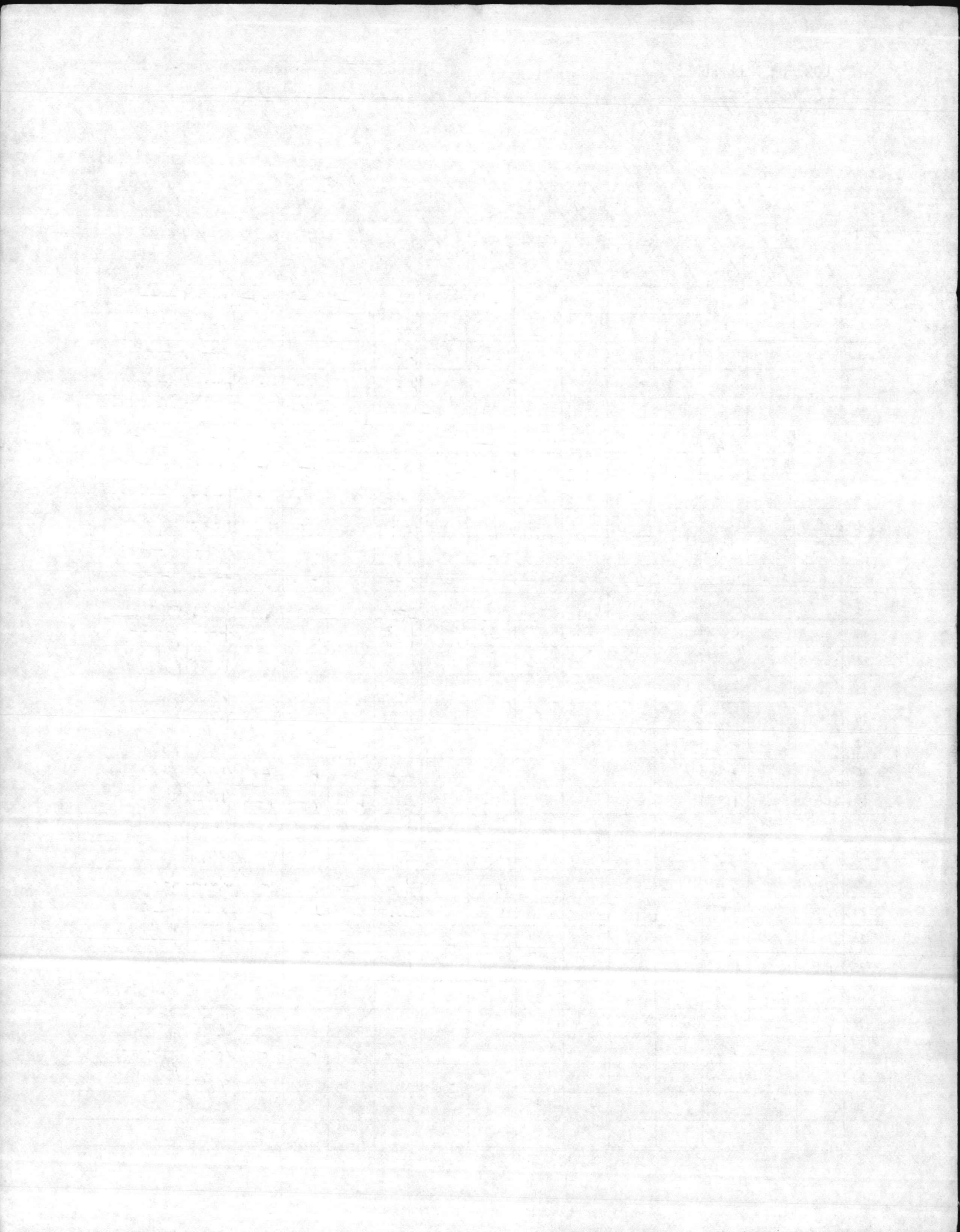
BLDG. KR#47 MONTH 11-87

DATE	PUMP OILED	PUMP GREASED	PUMP CLEANED	STATIC	PUMPING LEVEL	G.P.M.	DRAW DOWN	PUMP ON	PUMP OFF	DIST. PRESSURE	BACK PRESSURE VALVE CLEANED & ADJUSTED	FLDG. CLEANED	GROUNDS CLEANED	TIME CHECKED	OPERATORS INITIALS
1	✓	✓	✓				✓		26	✓	✓	✓	0850	J.F.	
2	✓	✓	✓				✓		26	✓	✓	✓	0840	J.F.	
3							✓		26				1300	J.F.	
4	✓	✓	✓				✓		26		✓	✓	0900	R.H.	
5								✓			✓	✓	1410	R.W.	
6	✓	✓	✓				✓		26	-	✓	✓	0840	J.F.	
7	✓	✓	✓				✓		26	-	✓	✓	0855	J.F.	
8	✓	✓	✓				✓		26		✓	✓	0910	R.H.	
9	✓	✓	✓				✓		26		✓	✓	0900	R.H.	
10	✓	✓	✓				✓		26		✓	✓	0910	R.H.	
11	✓	✓	✓				✓		26		✓	✓	0910	J.F.	
12							✓		26				1220	J.F.	
13	✓	✓	✓				✓		26		✓	✓	0816	R.H.	
14	✓	✓	✓				✓		26		✓	✓	0830	R.H.	
15							✓		26				1210	J.F.	
16								✓					1300	J.F.	
17	✓	✓	✓				✓		26	-	✓	✓	0840	J.F.	
18	✓	✓	✓				✓		26	-	✓	✓	0845	J.F.	
19	✓	✓	✓				✓		26	✓	✓	✓	0840	J.F.	
20							✓		26		✓	✓	0900	J.F.	
21	✓	✓	✓				✓		26		✓	✓	1100	R.H.	
22	✓	✓	✓				✓		26	-	✓	✓	0840	J.F.	
23	✓	✓	✓				✓		26	✓	✓	✓	0850	J.F.	
24		✓						✓					1215	J.F.	
25	✓	✓	✓				✓		26	✓	✓	✓	0845	J.F.	
26								✓					1100	J.F.	
27	✓	✓	✓				✓		26	✓	✓	✓	0834	J.F.	
28	✓	✓	✓				✓		26	✓	✓	✓	0835	J.F.	
29								✓					1130	J.F.	
30								✓					1220	J.F.	
31															

59

55

41





DAILY LOG FOR WELL PUMPS

MCBCL 11330/5 (REV 12-73)

BLDG. 47

MONTH July 1981

DATE	PUMP OILED	PUMP GREASED	PUMP CLEANED	STATIC	PUMPING LEVEL	G.P.M.	DRAW DOWN	PUMP ON	PUMP OFF	DIST. PRESSURE	BACK PRESSURE VALVE CLEANED & ADJUSTED	BLDG. CLEANED	GROUNDS CLEANED	TIME CHECKED	OPERATORS INITIALS
1							✓		26					0720	W
2							✓		26					1008	W
3	✓	✓					✓		26	-	-	-		1900	JL
4															
5							✓		26					110	W
6							✓		26					1520	W
7	✓	✓					✓		26	✓	✓			1339	KaH
8	✓	✓					✓		26	✓	✓			1416	KaH
9	✓	✓					✓		26	✓	✓			1166	KaH
10							✓		26					100	W
11							✓		26					1120	W
12	✓	✓					✓		26	✓	✓			1518	KaH
13	✓	✓					✓		26	✓	✓			1566	KaH
14	✓	✓					✓		26	-	-			0911	JL
15	✓	✓					✓		26	-	-			0830	JL
16	✓	✓					✓		26	-	-			0855	JL
17	✓	✓					✓		26	✓	✓			1368	KaH
18	✓	✓					✓		26	✓	✓			1300	KaH
19	✓	✓					✓		26	✓	-			0830	JL
20	✓	✓					✓		26	✓	✓			1355	JL
21					60		✓		26					1210	W
22							✓		26					1228	W
23							✓		26					0730	W
24	✓						✓		26	-	-			15330	JL
25	✓	✓					✓		26	✓	✓			1540	JL
26							✓		26					1127	W
27							✓		26					1155	W
28	✓						✓		26	✓	✓			1468	KaH
29	✓						✓		26	✓	✓			1406	KaH
30	✓						✓		26	✓	✓			1405	KaH
31							✓		26					1150	W



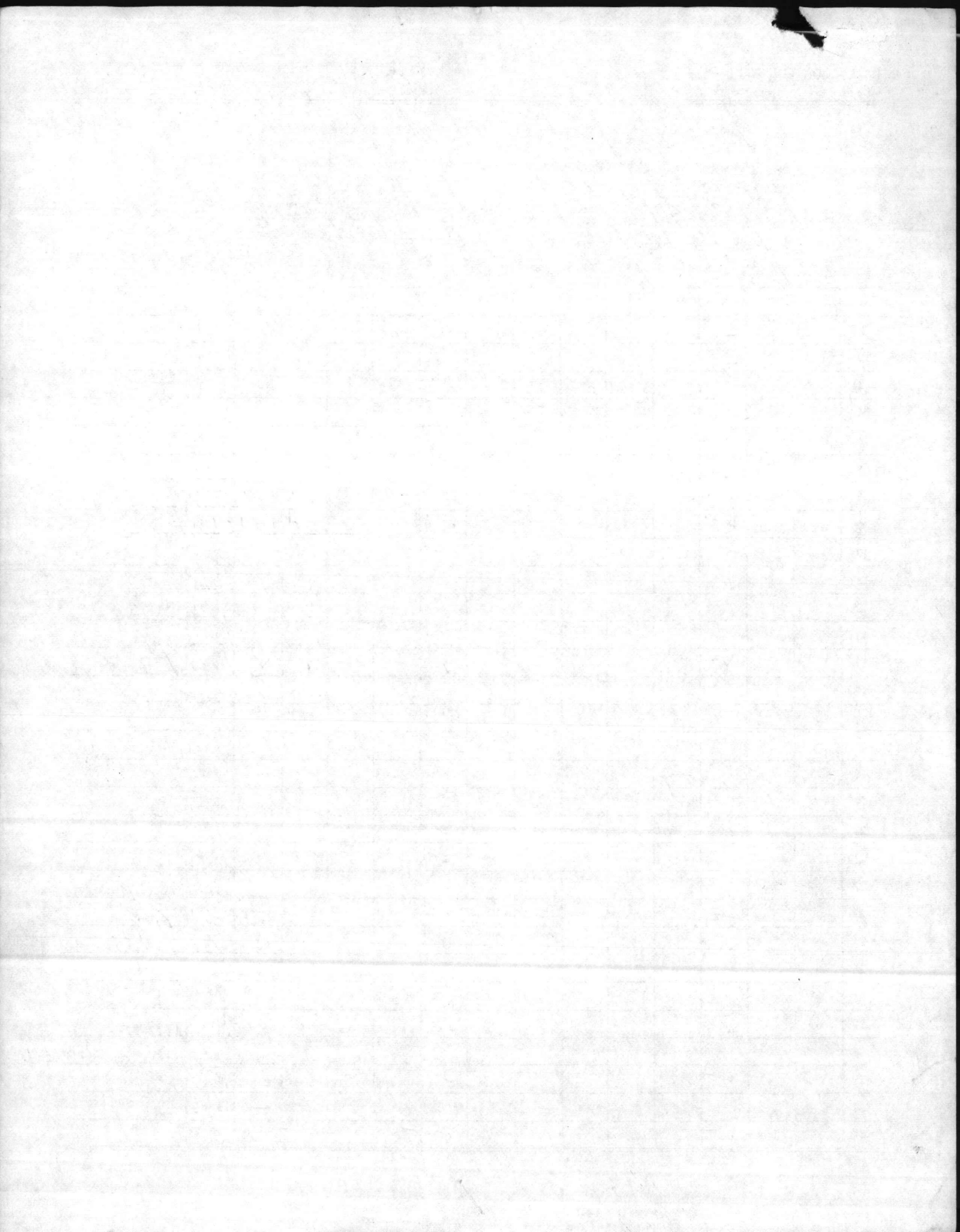
DAILY LOG FOR WELL PUMPS

MCBCL 11330/5 (REV 12-73)

BLDG. RR #47 MONTH 12-1987

DATE	PUMP OILED	PUMP GREASED	PUMP CLEANED	STATIC	PUMPING LEVEL	G.P.M.	DRAW DOWN	PUMP ON	PUMP OFF	DIST. PRESSURE	BACK PRESSURE VALVE CLEANED & ADJUSTED	FLDG. CLEANED	GROUNDS CLEANED	TIME CHECKED	OPERATORS INITIALS
1		✓						✓			✓	✓	1220		RCH
2		✓						✓			✓	✓	1410		RCH
3		✓						✓			✓	✓	1410		RCH
4								✓			✓	✓	1320		JL
5		✓						✓					1310		W
6		✓						✓			✓	✓	1330		RCH
7		✓						✓			✓	✓	1330		RCH
8		✓						✓			✓	✓	0850		JL
9		✓						✓			✓	✓	0855		JL
10								✓					1030		W
11		✓						✓			✓	✓	1445		RCH
12		✓						✓			✓	✓	1530		RCH
13								✓			✓	✓	1240		W
14		✓						✓			✓	✓	1700		RCH
15								✓			✓	✓	1430		RCH
16								✓			✓	✓	1470		W
17								✓					1000		W
18		✓	54					✓			✓	✓	0840		JL
19		✓						✓			✓	✓	0855		JL
20								✓					1100		W
21								✓					1200		W
22		✓						✓			✓	✓	1300		RCH
23		✓						✓			✓	✓	0850		JL
24		✓						✓			✓	✓	1330		RCH
25		✓						✓					1230		W
26								✓					1240		W
27		✓						✓			✓	✓	1400		RCH
28								✓					1205		JL DUNLAP
29		✓						✓			✓	✓	0855		JL
30		✓						✓			✓	✓	0850		JL
31		✓						✓			✓	✓	0840		JL





DAILY LOG FOR WELL PUMPS

MCBCL 11330/5 (REV 12-73)

BLDG. 45

MONTH Aug 89

DATE	PUMP OILED	PUMP GREASED	PUMP CLEANED	STATIC	PUMPING LEVEL	G.P.M.	DRAW DOWN	PUMP ON	PUMP OFF	DIST. PRESSURE	BACK PRESSURE VALVE CLEANED & ADJUSTED	BLDG. CLEANED	GROUNDS CLEANED	TIME CHECKED	OPERATORS INITIALS
1								✓			✓	✓	1015	CK	
2								✓			✓	✓	1330	CK	
3								✓			✓	✓	0915	CK	
4								✓					1000	W	
5								✓					1115	W	
6								✓			✓	✓	1025	CK	
7								✓			✓	✓	1030	CK	
8									28		✓	✓	1230	JF	
9								✓			✓	✓	1040	JF	
10								✓			✓	✓	1150	JF	
11								✓			✓	✓	1130	CK	
12								✓			✓	✓	1015	CK	
13								✓					1330	RW	
14								✓					1335	JF	
15								✓					0815	JF	
16															
17								✓					0830	JF	
18								✓			✓	✓	1600	JF	
19								✓			✓	✓	1130	JF	
20															
21								✓	28		✓	✓	1135	JF	
22								✓	28		✓	✓	0915	RW	
23								✓	28		✓	✓	1130	CK	
24								✓	28		✓	✓	1245	CK	
25								✓					1430	W	
26								✓	28				1430	W	
27								✓			✓	✓	1020	CK	
28								✓			✓	✓	1145	CK	
29								✓			✓	✓	0930	JF	
30								✓							
31															

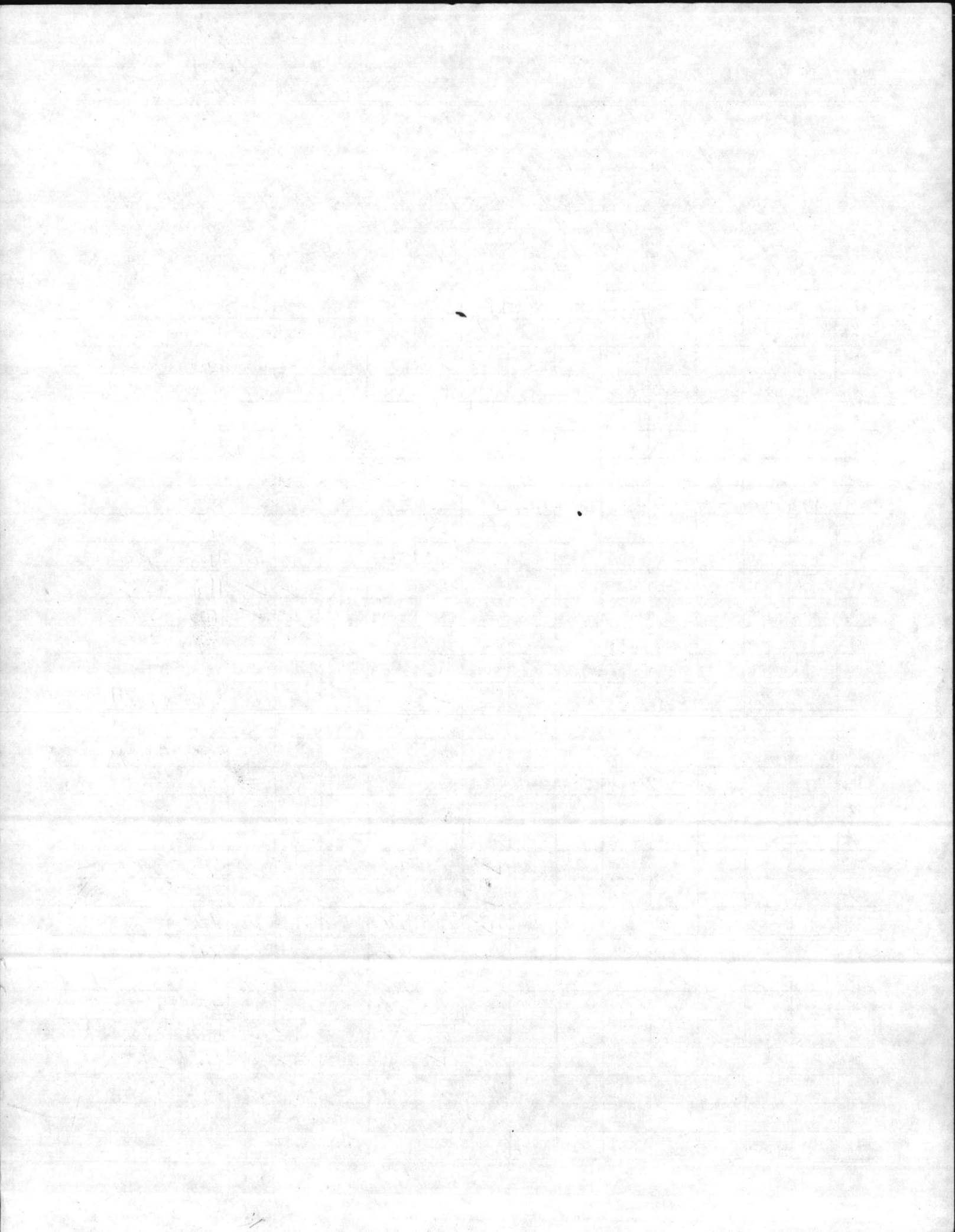
(pump pulled out)

pump auto ok.

PACKING GLAND TIGHTENED

56

65





DAILY LOG FOR WELL PUMPS

MCBCL 11330/5 (REV 12-73)

BLDG. 47

MONTH July

DATE	PUMP OILED	PUMP GREASED	PUMP CLEANED	STATIC	PUMPING LEVEL	G.P.M.	DRAW DOWN	PUMP ON	PUMP OFF	DIST. PRESSURE	BACK PRESSURE VALVE CLEANED & ADJUSTED	BLDG. CLEANED	GROUNDS CLEANED	TIME CHECKED	OPERATORS INITIALS
1															
2															
3								✓						1100	LH
4								✓			✓	✓		1115	CK
5			54'	54'				✓			✓	✓		0945	CK
6				59'	5'			✓			✓	✓		1145	CK
7				DN 30 min water				✓			✓	✓		1225	CK
8								✓			✓	✓		1330	CK
9								✓			✓	✓		1125	CK
10								✓			✓	✓		1050	J.C.
11								✓						0920	J.F.
12								✓						1030	J.C.
13								✓						1045	J.C.
14								✓						0830	L.K.
15								✓						1050	R.W.
16								✓						0935	J.C.
17								✓						1440	
18								✓						1100	R.W.
19								✓						1455	W
20								✓						1530	W
21								✓						1400	W
22								✓						1455	W
23								✓						1540	W
24								✓						1345	T 9000
25								✓			✓	✓		1035	CK
26								✓			✓	✓		1115	CK
27								✓			✓	✓		1235	CK
28								✓			✓	✓		1255	CK
29								✓			✓	✓		1120	CK
30								✓			✓	✓		1030	CK
31								✓			✓	✓		1000	J.C.

