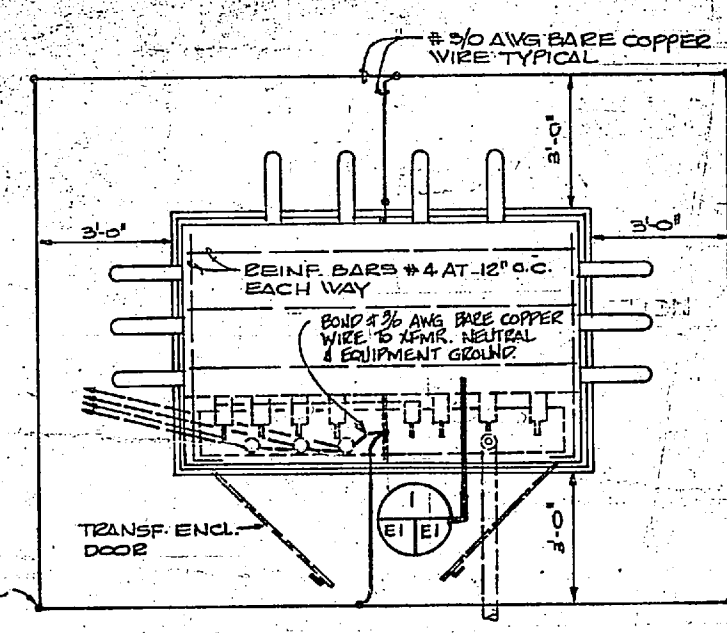


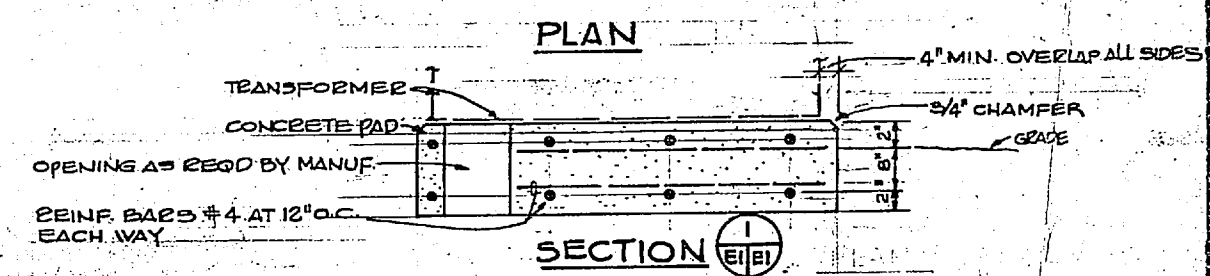
REVISIONS		
NO.	DESCRIPTION	DATE

ELECTRICAL LEGEND - SITE PLAN	
SYMBOL	DESCRIPTION
○	POWER PILE
—P—	AERIAL PRIMARY SERVICE
—S—	UNDERGROUND PRIMARY SERVICE
---	UNDERGROUND SECONDARY SERVICE
---	UNDERGROUND CONDUIT

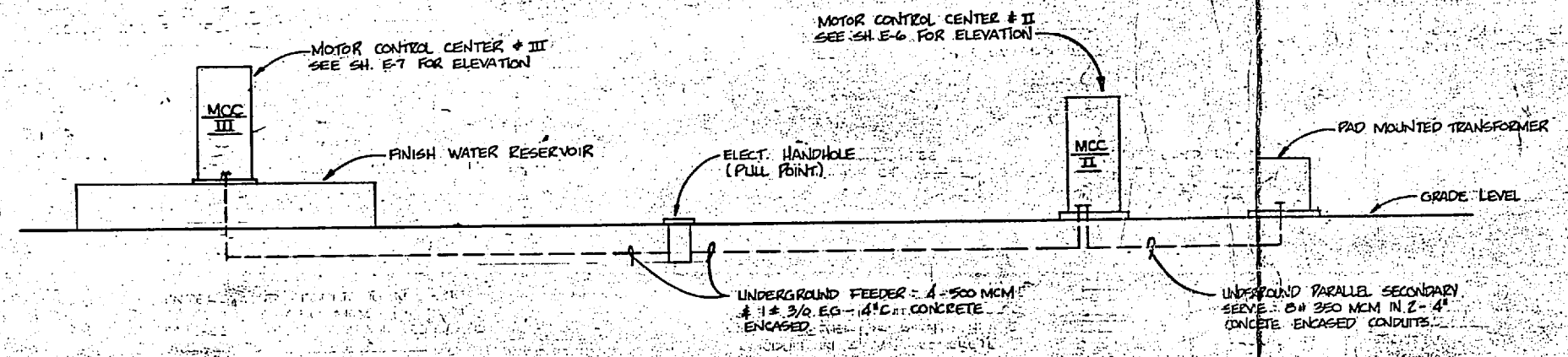
ELECTRICAL SITE PLAN - HOLCOMB BLVD. WATER TREATMENT PLANT
SCALE: 1" = 40'-0"



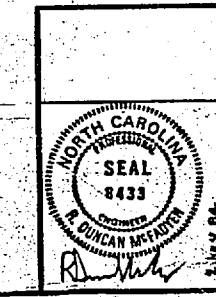
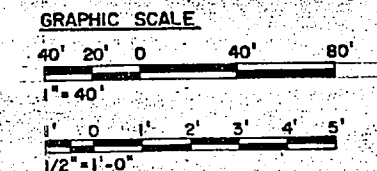
3/4" x 12'-0" CHDS. 200 TYPICAL FOR G.



PAD MOUNTED TRANSFORMER DETAILS
NOT TO SCALE



SITE PLAN - POWER RISER
NOT TO SCALE



HENRY VON OESSEN AND ASSOCIATES CONSULTING ENGINEERS AND PLANNERS WILMINGTON, NORTH CAROLINA	DEPARTMENT OF THE NAVY NAVAL FACILITIES ENGINEERING COMMAND ATLANTIC DIVISION NORFOLK, VIRGINIA
DESIGNED BY: [Signature] CHECKED BY: [Signature] DATE: 11/1/78	NAVAL STATION CAMP LEJEUNE NORTH CAROLINA EXPANSION OF HOLCOMB BOULEVARD WATER TREATMENT PLANT
PROJECT NO. 4107598	ELECTRICAL SITE PLAN
DATE: 11/1/78	SHEET 65 OF 78
SCALE: AS SHOWN	SPEC: 05-B1-13.4.4
	207598

346-5240 James Woods } 6 months
455-0690 George shorts }

F

□

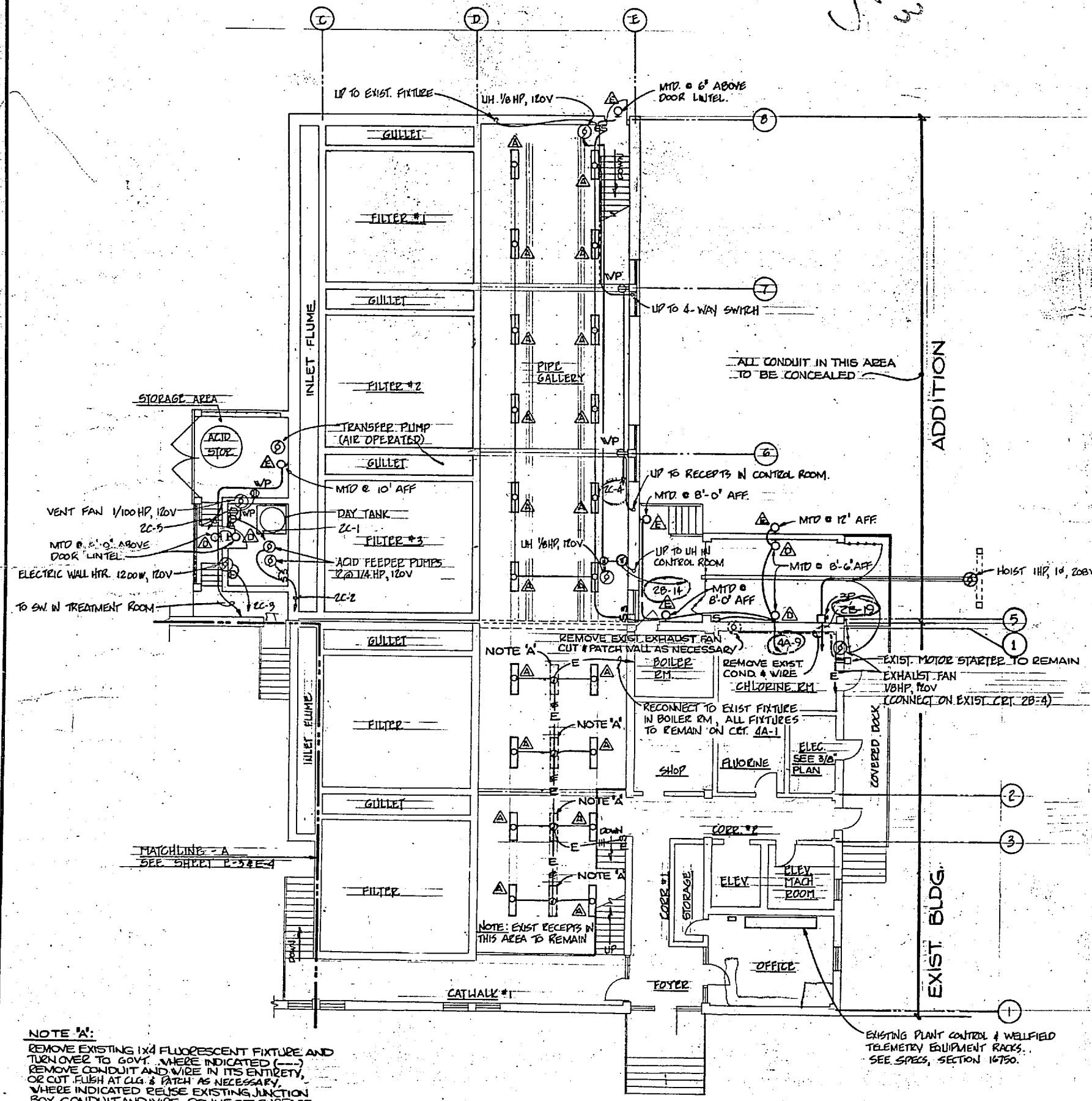
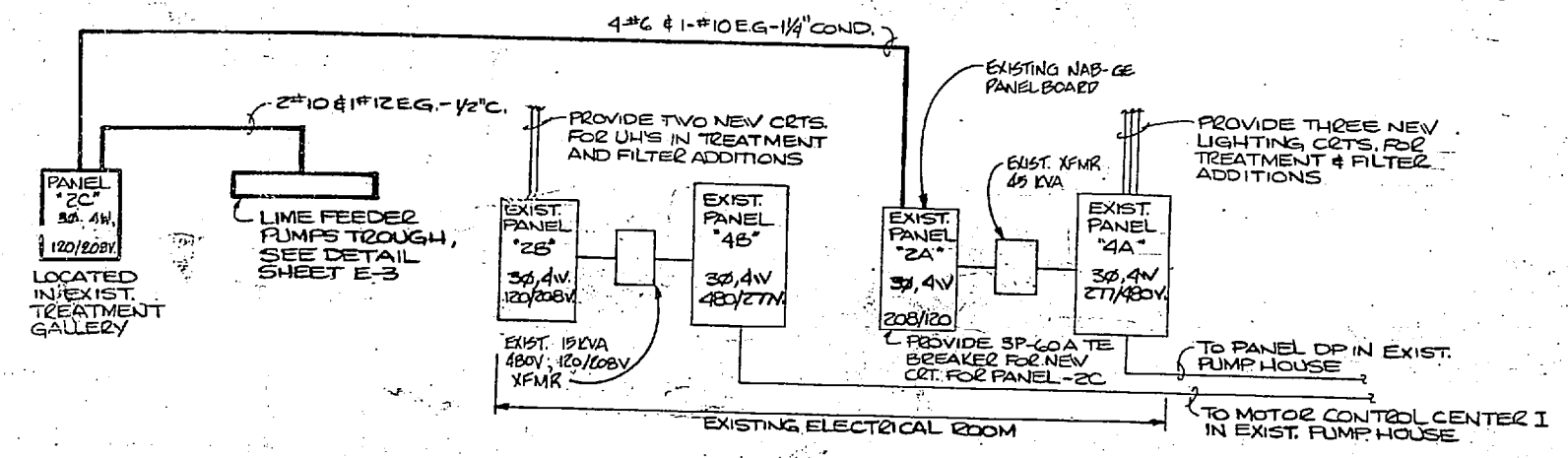
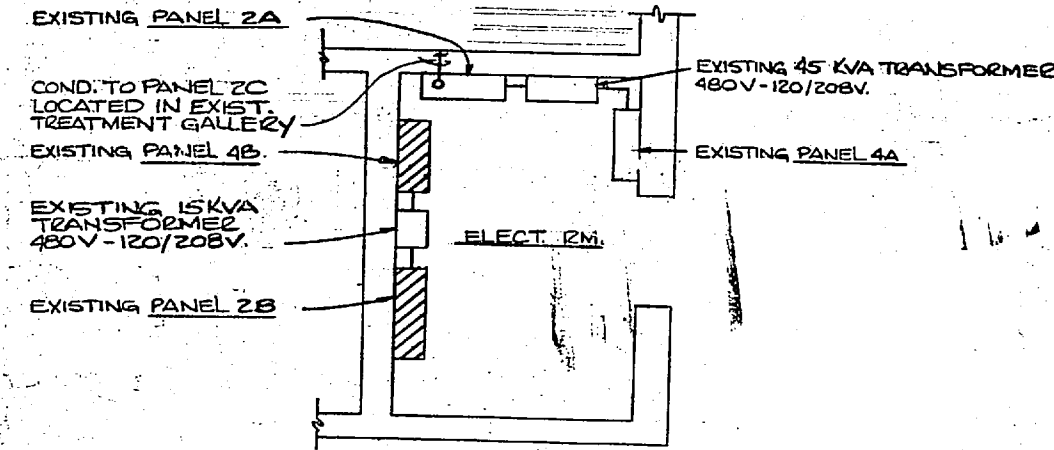
SM

○○○○○○

○

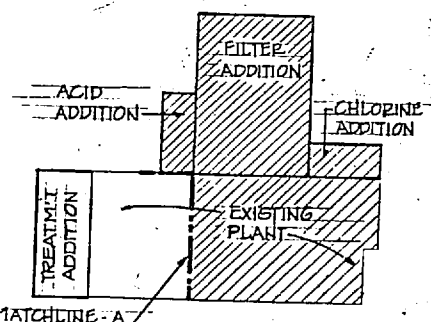
1/2 Recept-26-4
 2-1/2 LH-2B-11, 14 19 Hoist
 2-1/2 Lites-4A-9, 2
 3/4 Filter Tables - Control Cab.
 Vents?

REVISIONS		
NO.	DESCRIPTION	DATE



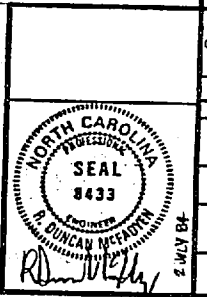
NOTE 'A':
 REMOVE EXISTING 1X4 FLUORESCENT FIXTURE AND TROUBLELITE TO 300V. WHERE INDICATED (---) REMOVE CONDUIT AND WIRE IN ITS ENTIRETY. OR CUT PUMP AT CUL & PATCH AS NECESSARY. WHERE INDICATED REMOVE EXISTING JUNCTION BOX CONDUIT AND WIRE. CONNECT SURFACE MTD. FLUORESCENT FIXTURE TYPE A WITH 20' 1/2" R.E.G. - 1/2".

PIPE GALLERY AND PARTIAL FIRST FLOOR
PLAN - BUILDING 670
 SCALE: 1/8"=1'-0"



GRAPHIC SCALES

4" = 0'	4" = 4'	8" = 8'	16" = 16'	20" = 20'	
1/8" = 1'-0"	1" = 0'	1" = 2'	3" = 4'	5" = 6'	7" = 8'
3/8" = 1'-0"					



HENRY VON OESSEN AND ASSOCIATES CONSULTING ENGINEERS AND PLANNERS WILMINGTON, NORTH CAROLINA PROJECT NO. 4107599 DATE: 12/15/74 BY: HVO CHECKED: HVO APPROVED: HVO ACTIVITY: ESTIMATING	DEPARTMENT OF THE NAVY - NAVAL FACILITIES ENGINEERING COMMAND ATLANTIC DIVISION NAVAL STATION CAMP LEJEUNE, NORTH CAROLINA EXPANSION OF HOLCOMB BOULEVARD WATER TREATMENT PLANT ELECTRICAL PIPE GALLERY NAVFAC DRAWING NO. 4107599 NAVFAC CONTRACT NO. N62470-81-B-1544 SCALE: 1"=1'-0" (SEE DRAWING FOR SCALE) SHEET 65 OF 74 207599
---	--



E12
K34
Q56
J78
R910
L1112

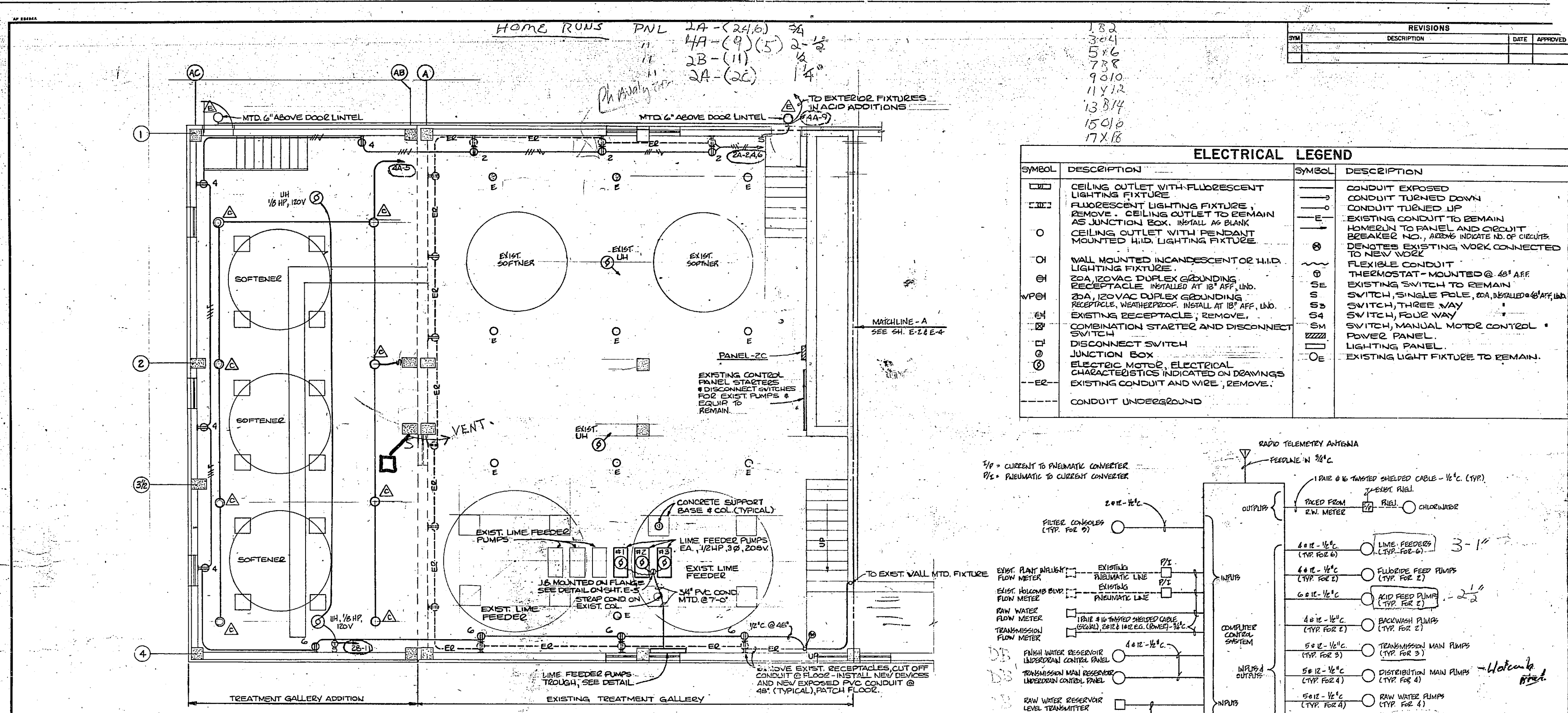
4277
69

277
75
1385
1339
26273

36
277
235
620

J. 88
1110

14470



TREATMENT ADDITION - BUILDING 670

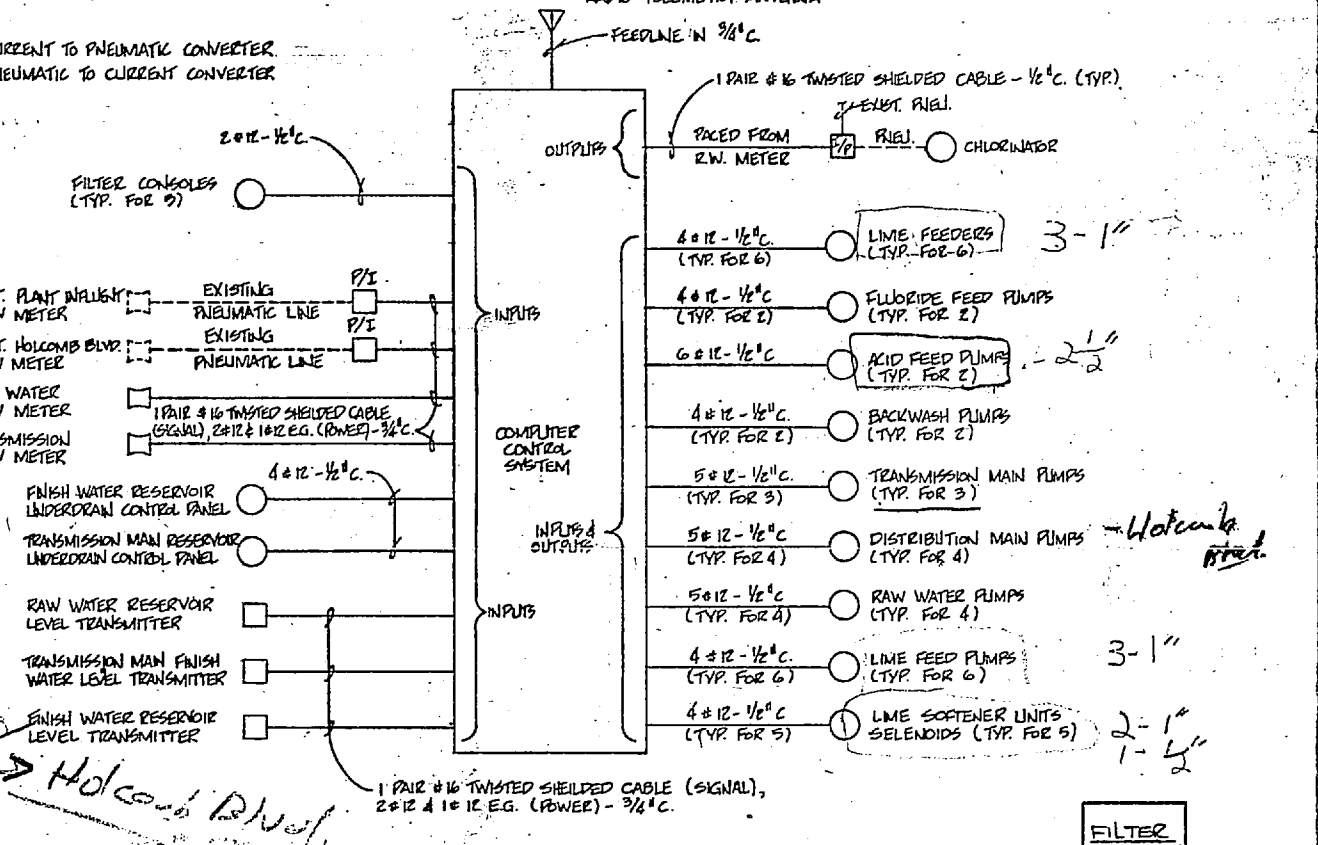
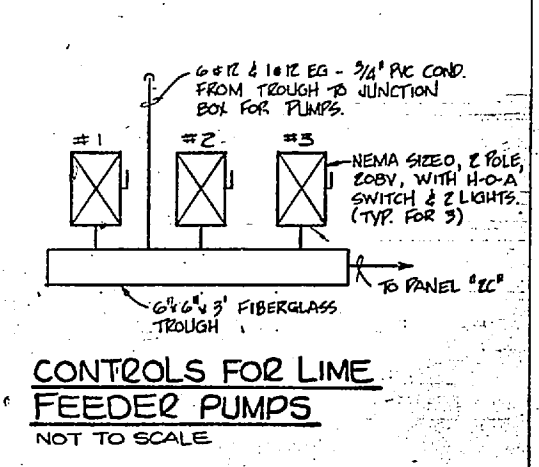
SCALE: 1/4" = 1'-0"
 NOTE: ALL RECEPTACLES SHALL BE WEATHERPROOF & INSTALLED 48" AFF.

LIGHTING FIXTURE SCHEDULE

FIXTURE SYMBOL	STYLE & TYPE - SEE SPECS FOR NAVFAC SKETCH NO.	NUMBER & TYPE OF LAMPS	VOLTS	MOUNTING	REMARKS
△	NL-B	2-F34 T12 CW/ES	277	CEILING SURFACE	DAMP LOCATION, ENERGY SAVING BALLAST
△	NL-45, TYPE A	1-100W	277	WALL-HT AS INDICATED ON DVGS.	DAMP LOCATION
△	NL-22, TYPE B	1-400W METAL HALIDE	277	CEILING-PENDANT	PROVIDE POWER HOOD HANGER
△	NL-47, TYPE C	1-35W HPS	277	WALL-HT AS INDICATED ON DVGS.	WET LOCATION
△	NL-47, TYPE C	1-50W HPS	277	WALL-HT AS INDICATED ON DVGS.	WET LOCATION
△	NL-47, TYPE C	1-35W HPS	120	WALL-HT AS INDICATED ON DVGS.	WET LOCATION

ABBREVIATIONS

AFF	ABOVE FINISHED FLOOR	KVA	KILO VOLT AMPERE
A	AMPERES	MIN.	MINIMUM
COND. OR C.	CONDUIT	MTD.	MOUNTED
CLS.	CEILING	N	NEUTRAL
CCT.	CIRCUIT	N.F.	NON-FUSIBLE
COR.	CORRIDOR	RECEPT.	RECEPTACLE
DN.	DOWN	SW.	SWITCH
DISC. SW.	DISCONNECT SWITCH	S/O	SPACE ONLY
E.G.	EQUIPMENT GROUND	SECT.	SECTION
E.O. EXIST.	EXISTING	VP	WEATHER PROOF
EL.	ELEVATION	UH.	UNIT HEATER
ELEC.	ELECTRICAL	PVC	POLYVINYL CHLORIDE
F.	FUSIBLE	V.	VOLT
HCA	HAND OFF AUTOMATIC	∅	PHASE
HP	HOSE POWER	UG	UNDERGROUND
HPS	HIGH PRESSURE SODIUM	W	WATTS
		YFMK	TRANSFORMER



KEY PLAN

E-3

SEAL
 8433

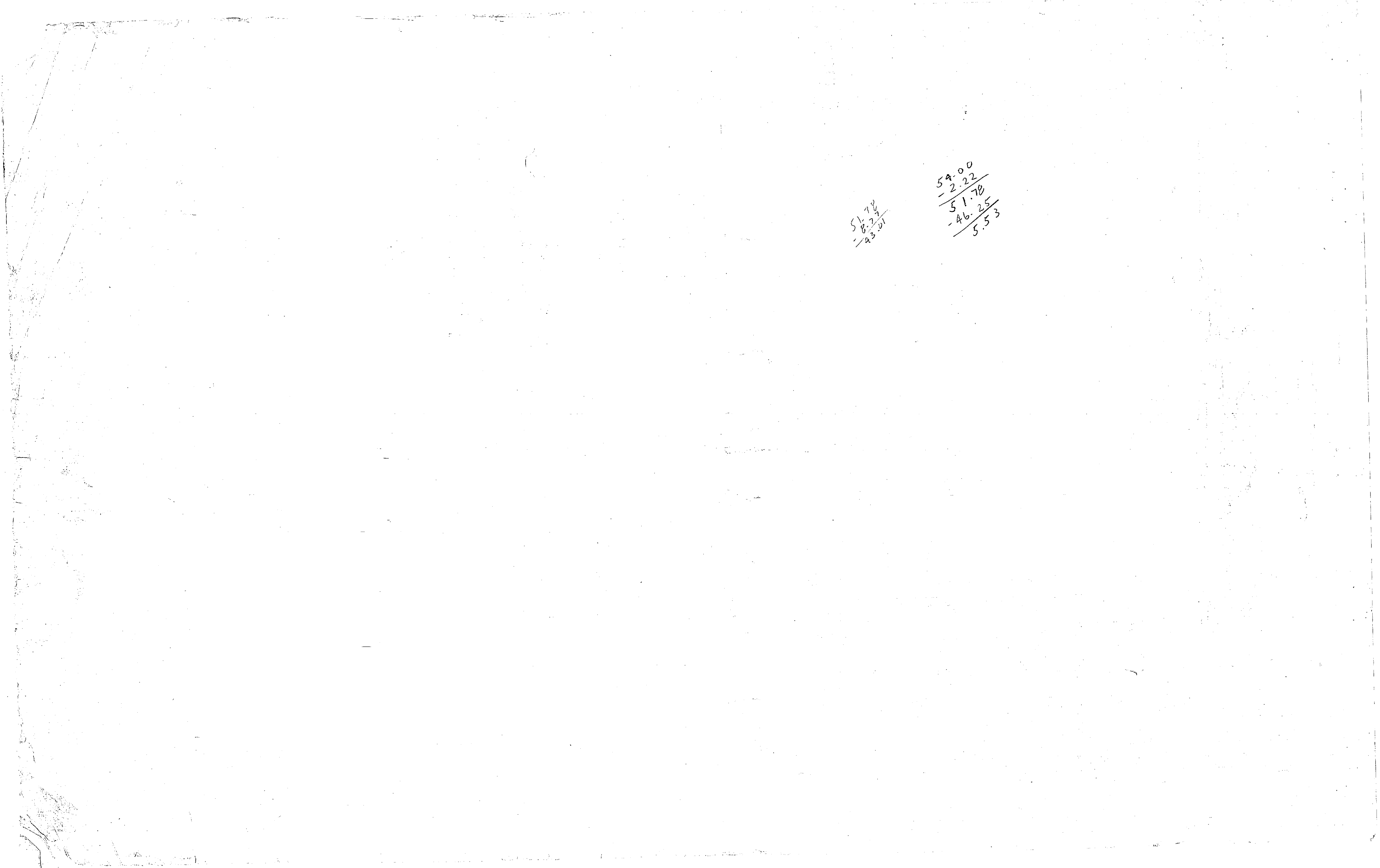
HENRY VAN DEEN AND ASSOCIATES
 CONSULTING ENGINEERS AND PLANNERS
 WILMINGTON, NORTH CAROLINA

DEPARTMENT OF THE NAVY
 NAVAL FACILITIES ENGINEERING COMMAND
 ATLANTIC DIVISION
 NAVAL STATION
 NORFOLK, VIRGINIA

CAMP LEJEUNE
 EXPANSION OF HOLCOMB BOULEVARD
 WATER TREATMENT PLANT

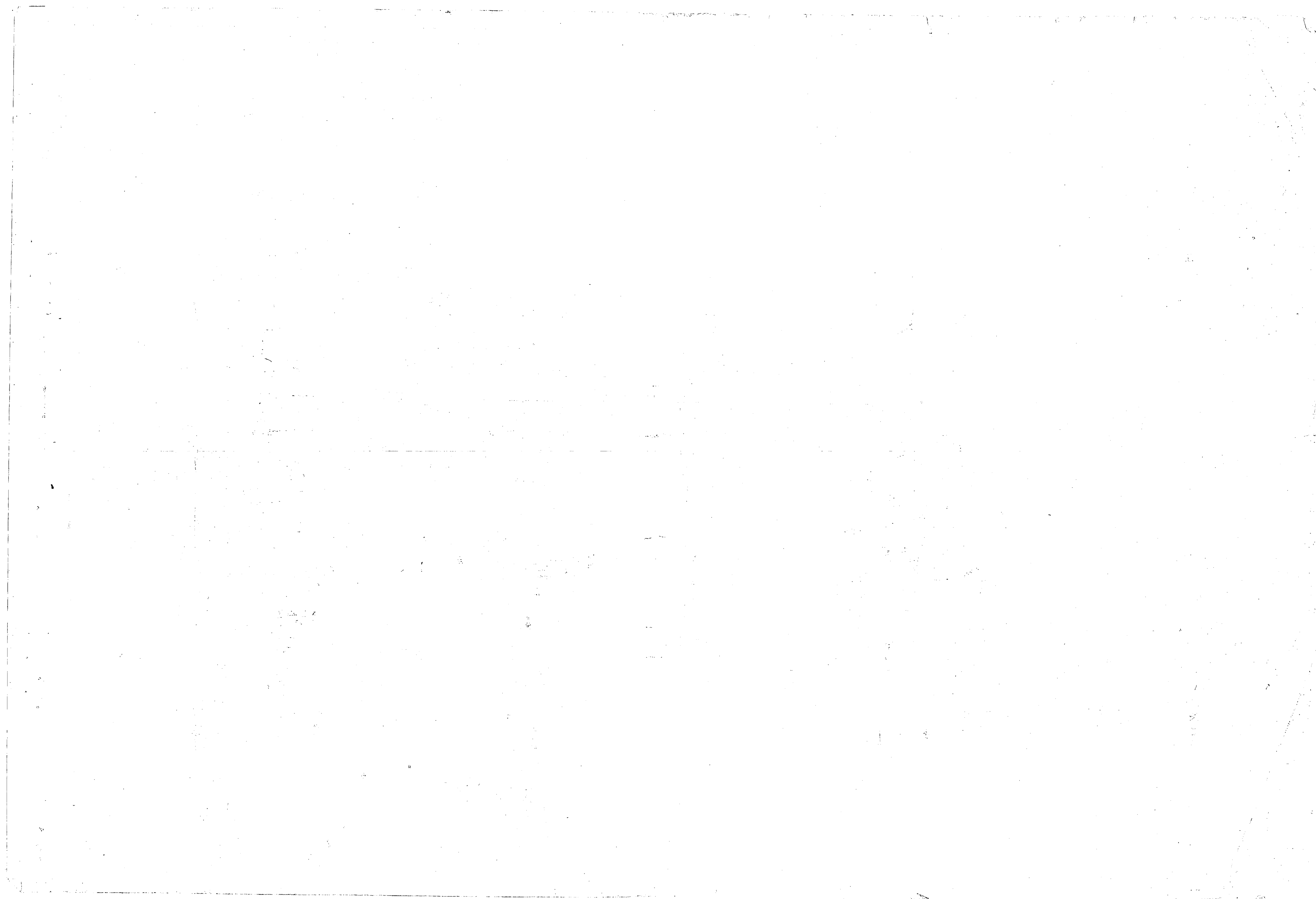
ELECTRICAL TREATMENT ADDITION

PROJECT NO. 4107600
 SHEET NO. 67 OF 74
 DATE: 11/19/64
 SCALE: AS SHOWN
 SPEC. 05-81-1644



51.70
- 8.23
- 23.01

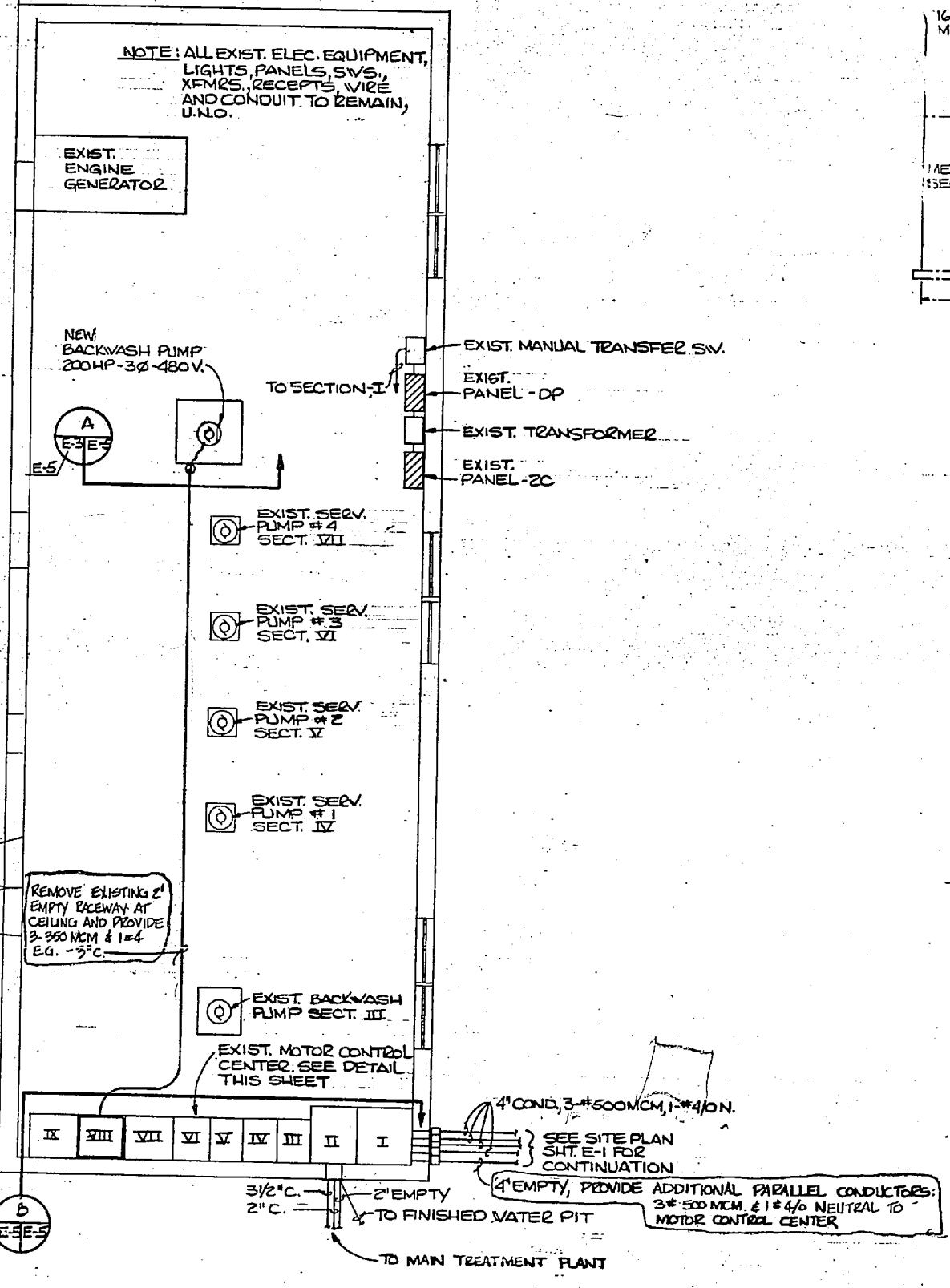
59.00
- 2.22
51.78
- 46.25
5.53



REVISIONS		
NO.	DESCRIPTION	DATE

REMOVE EXISTING 2" COND. & INSTALL 3" COND., 2 x 360 NCM # 1 & 4 EG.

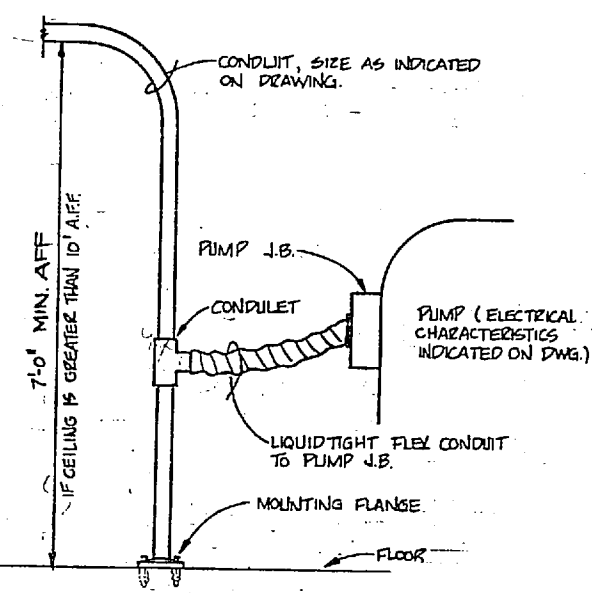
	20A	20A									
1600 A M.C.B.	00A	00A	BACK WASH PUMP	SEW. PUMP #1	SEW. PUMP #2	SEW. PUMP #3	SEW. PUMP #4	NEW BACK WASH PUMP	FUTURE		
	225 A								(EXIST. SPACE CIRCULAR)		
METER SECTION	225 A		125 HP 3P-480V	40 HP 3P-480V	40 HP 3P-480V	75 HP 3P-480V	75 HP 3P-480V	200 HP 3P-480V			
	5(C)	5(O)							(SEE NOTE BELOW)		
									(EXIST. SPACE CIRCULAR)		
	I	II	III	IV	V	VI	VII	VIII	IX		



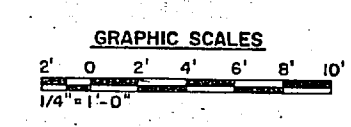
EXISTING PUMP HOUSE - BLDG. 611
SCALE 1/4"=1'-0"

EXISTING MOTOR CONTROL CENTER
NOT TO SCALE

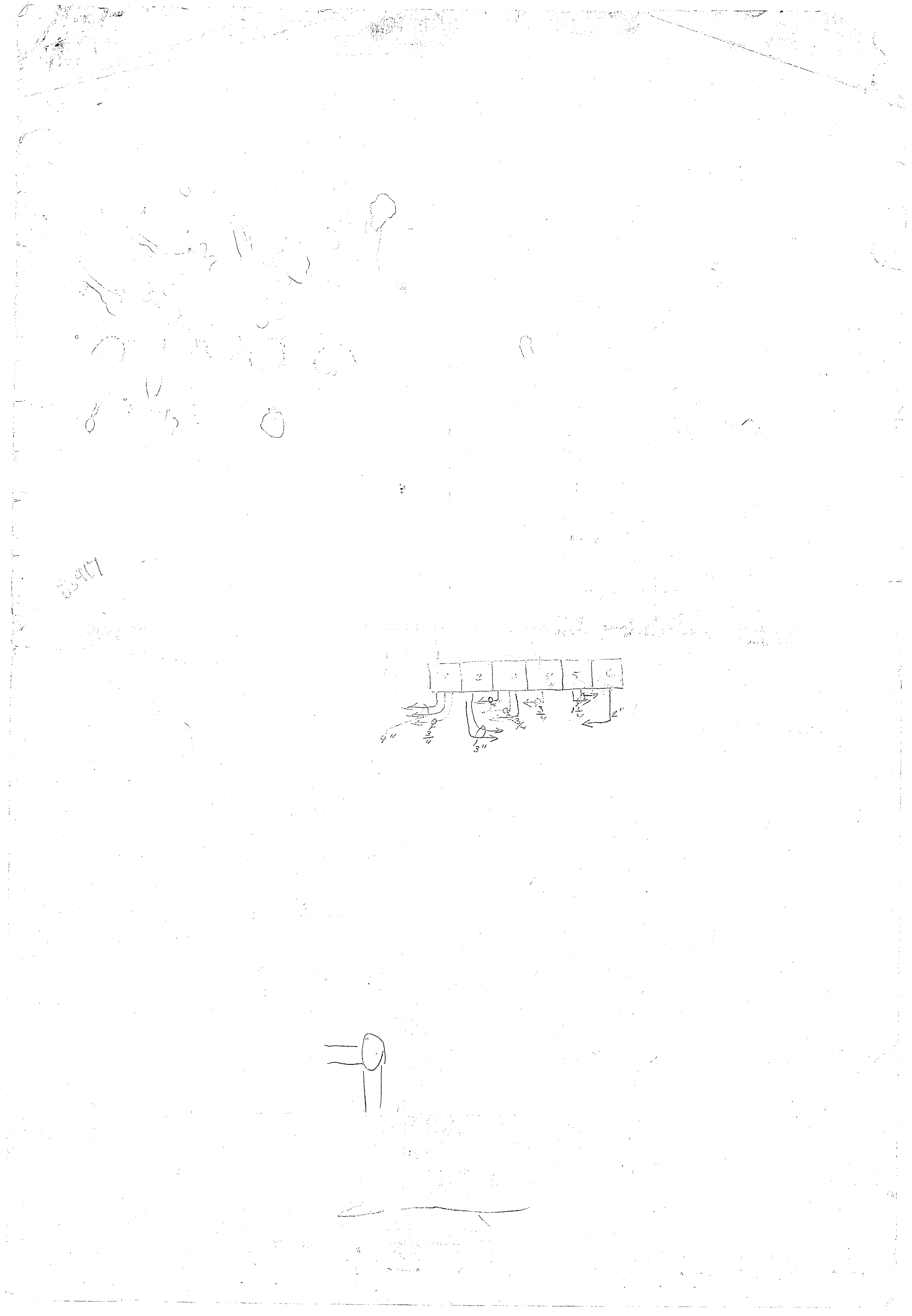
SECTION III: PROVIDE COMBINATION FUSED SWITCH AND REDUCED VOLTAGE AUTO-TRANSFORMER, MAGNETIC STARTER, HAND-OFF-AUTOMATIC SWITCH, RED & GREEN SIGNAL LIGHTS AND CONTROL VOLTAGE TRANSFORMER.



CONDUIT CONNECTION AT PUMP (TYPICAL)
OVERHEAD FEEDERS ONLY
NOT TO SCALE

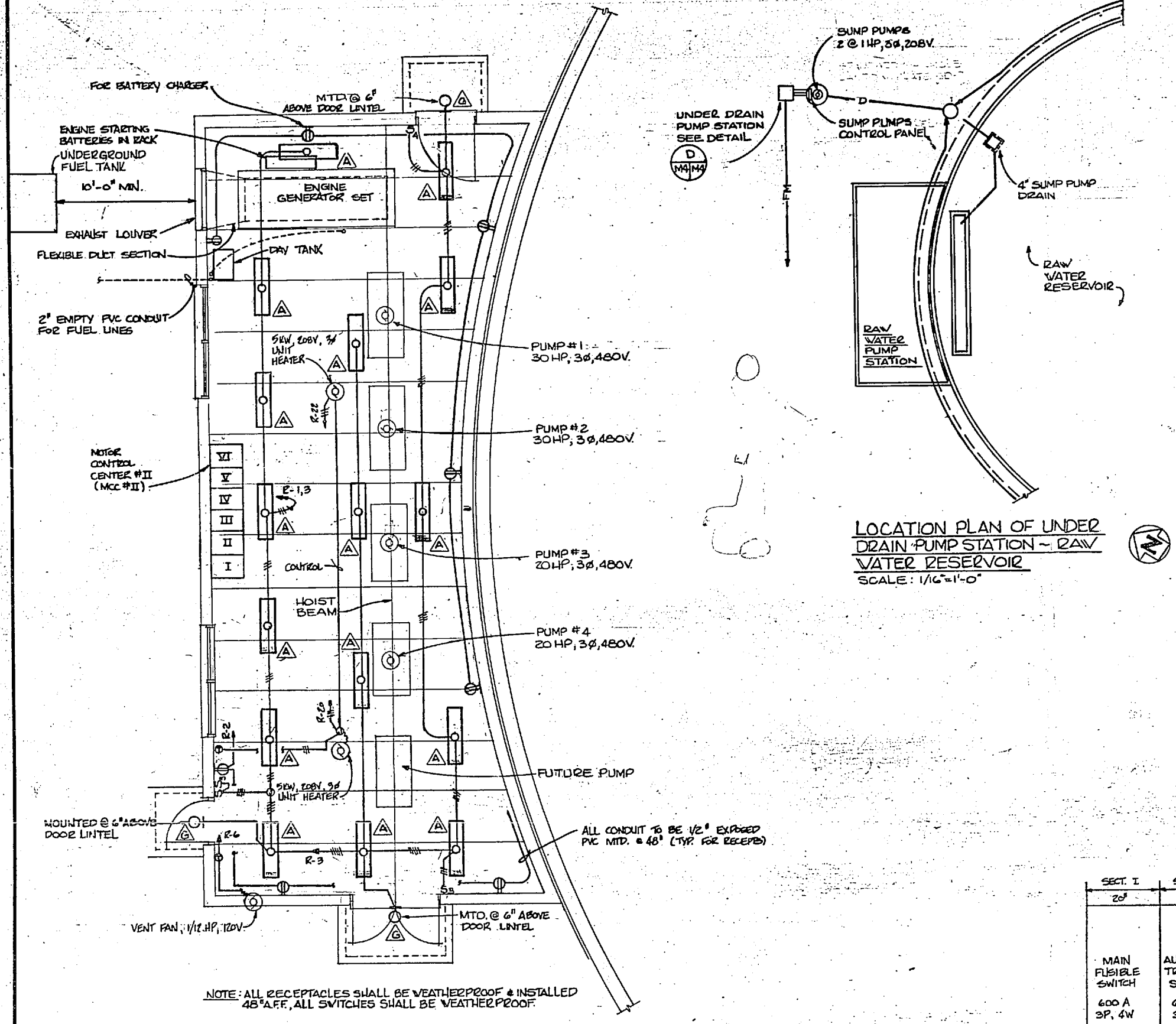


		E-5	
		HENRY VON OESSEN AND ASSOCIATES CONSULTING ENGINEERS AND PLANNERS WILMINGTON, NORTH CAROLINA	
DEPARTMENT OF THE NAVY NAVAL FACILITIES ENGINEERING COMMAND		ATLANTIC DIVISION	
PROJ. FROM: PROJECT: LOW ROOM PROJ. NO.: JRB-01 ENCL. JRB DATE: 2/17/74 DRAWN BY: [Signature] CHECKED BY: [Signature]		NAVAL STATION CAMP LEJEUNE NORTH CAROLINA EXPANSION OF HOLCOMB BOULEVARD WATER TREATMENT PLANT	
TITLE: ELECTRICAL EXISTING PUMP HOUSE		FILE NO.: 4107602	
CONTRACT NO.: N62470-S-B-1644		SHEET NO.: 69 OF 74	
SCALE: AS SHOWN		SPEC: DG-BI-1644	
DATE: 2/17/74		SHEET NO.: 207602	



1987

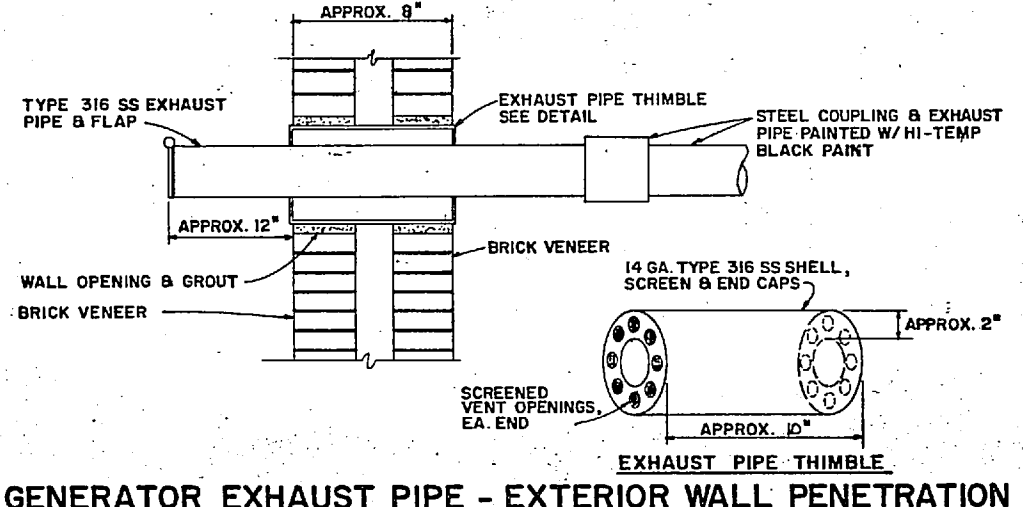
REVISIONS			
NO.	DESCRIPTION	DATE	APPROVED



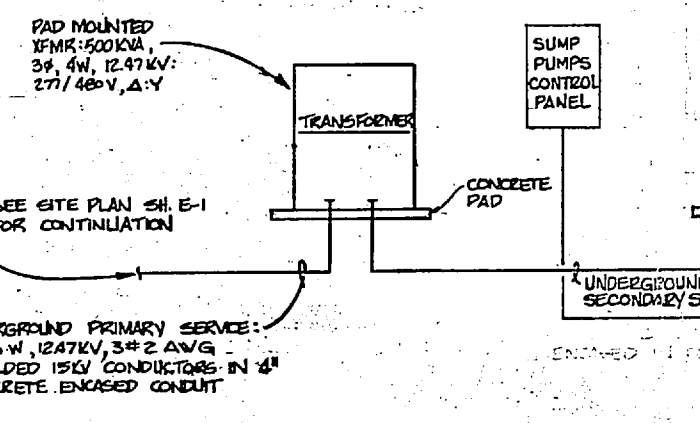
LOCATION PLAN OF UNDER DRAIN PUMP STATION - RAW WATER RESERVOIR
SCALE: 1/4"=1'-0"

DESIGNATION TO BE TYPED IN PANEL CIRCUIT DIRECTORY	PHASE LOADINGS			CIRCUIT TYPE	CIRCUIT NO.	AIC	CIRCUIT BREAKER	PHASE LOADINGS	DESIGNATION TO BE TYPED IN PANEL CIRCUIT DIRECTORY
	A	B	C						
LIGHTING	750	1000	1200	10 K I	1	100	100	100	RECEPT.
SEPARATE					2	100	100	100	VENT FAN 1/2 H.P.
					3	100	100	100	
					4	100	100	100	
					5	100	100	100	
					6	100	100	100	
					7	100	100	100	
					8	100	100	100	
					9	100	100	100	
					10	100	100	100	
					11	100	100	100	
					12	100	100	100	
					13	100	100	100	
					14	100	100	100	
					15	100	100	100	
					16	100	100	100	
					17	100	100	100	
					18	100	100	100	
					19	100	100	100	
					20	100	100	100	
					21	100	100	100	
					22	100	100	100	
					23	100	100	100	
					24	100	100	100	
					25	100	100	100	
					26	100	100	100	
					27	100	100	100	
					28	100	100	100	
					29	100	100	100	
					30	100	100	100	
					31	100	100	100	
					32	100	100	100	
					33	100	100	100	
					34	100	100	100	
					35	100	100	100	
					36	100	100	100	
					37	100	100	100	
					38	100	100	100	
					39	100	100	100	
					40	100	100	100	
					41	100	100	100	
					42	100	100	100	
					43	100	100	100	
					44	100	100	100	
					45	100	100	100	
					46	100	100	100	
					47	100	100	100	
					48	100	100	100	
					49	100	100	100	
					50	100	100	100	
					51	100	100	100	
					52	100	100	100	
					53	100	100	100	
					54	100	100	100	
					55	100	100	100	
					56	100	100	100	
					57	100	100	100	
					58	100	100	100	
					59	100	100	100	
					60	100	100	100	
					61	100	100	100	
					62	100	100	100	
					63	100	100	100	
					64	100	100	100	
					65	100	100	100	
					66	100	100	100	
					67	100	100	100	
					68	100	100	100	
					69	100	100	100	
					70	100	100	100	
					71	100	100	100	
					72	100	100	100	
					73	100	100	100	
					74	100	100	100	
					75	100	100	100	
					76	100	100	100	
					77	100	100	100	
					78	100	100	100	
					79	100	100	100	
					80	100	100	100	
					81	100	100	100	
					82	100	100	100	
					83	100	100	100	
					84	100	100	100	
					85	100	100	100	
					86	100	100	100	
					87	100	100	100	
					88	100	100	100	
					89	100	100	100	
					90	100	100	100	
					91	100	100	100	
					92	100	100	100	
					93	100	100	100	
					94	100	100	100	
					95	100	100	100	
					96	100	100	100	
					97	100	100	100	
					98	100	100	100	
					99	100	100	100	
					100	100	100	100	

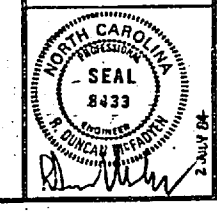
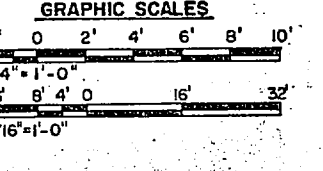
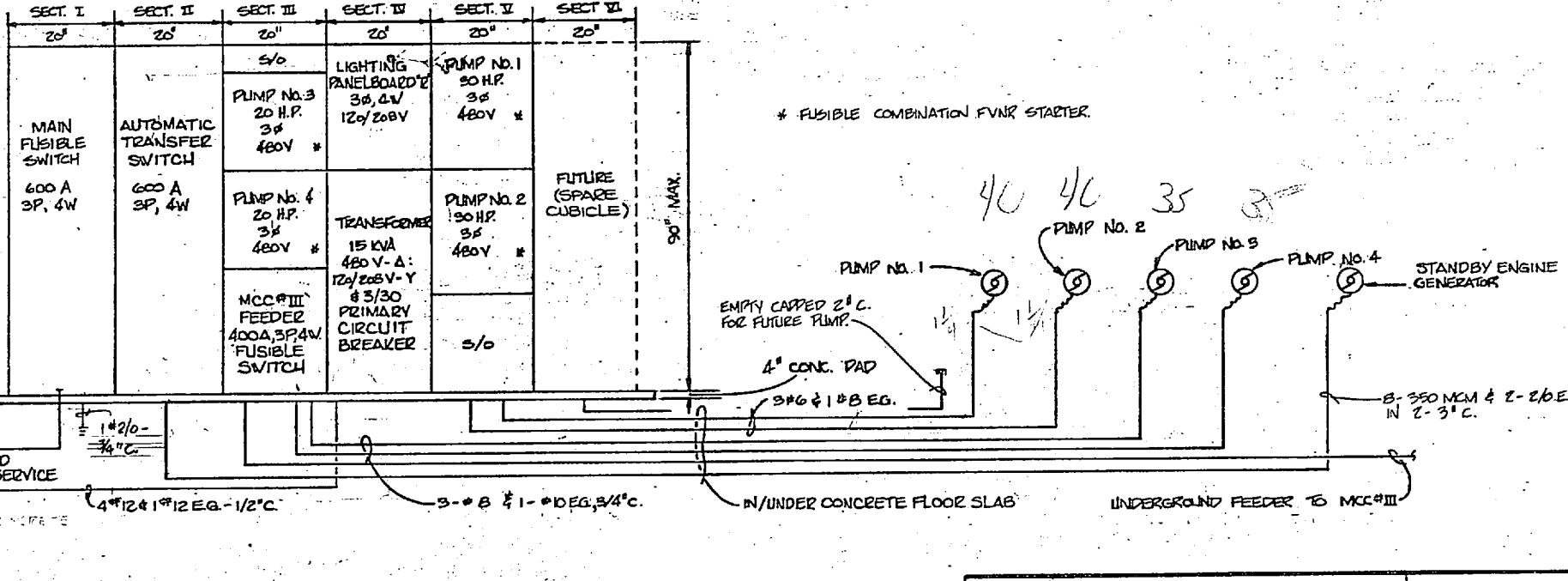
PUMP HOUSE FLOOR PLAN - RAW WATER RESERVOIR
SCALE 1/4"=1'-0"



GENERATOR EXHAUST PIPE - EXTERIOR WALL PENETRATION
NO SCALE



MOTOR CONTROL CENTER #II (MCC #II)
ELEVATION AND RAW WATER RESERVOIR
POWER RISER DIAGRAM
NOT TO SCALE



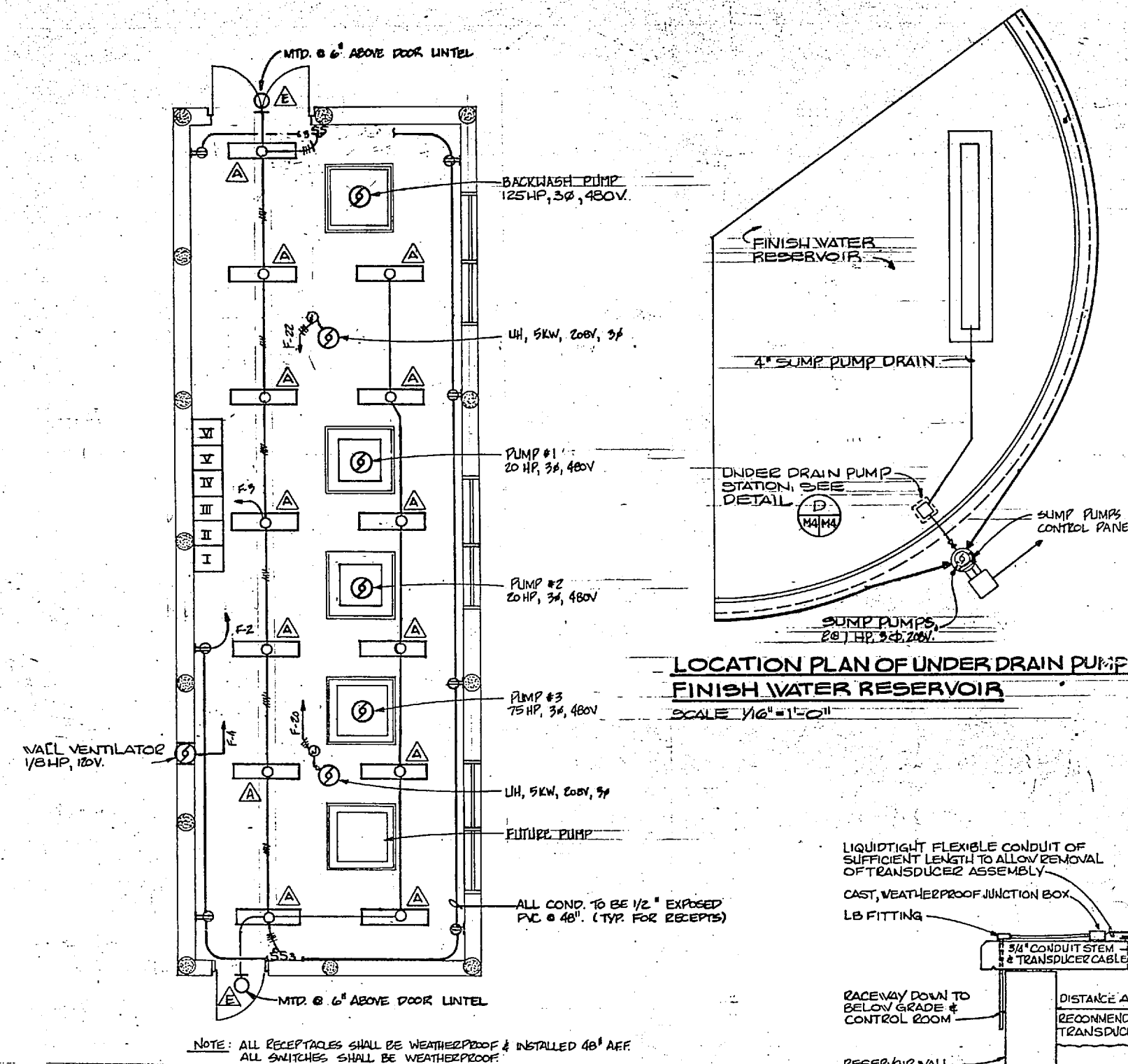
HENRY VON GISEN AND ASSOCIATES CONSULTING ENGINEERS AND PLANNERS WILMINGTON, NORTH CAROLINA DEB ROM [P]RSMCGBH [C]M RDM PROJ. NO. JRB CR. ENGR. JRB DATE: 11/18/14 TITLE: ELECTRICAL CONTRACTOR FOR: EXP. OF THE CONDUIT AND PIPING	DEPARTMENT OF THE NAVY NAVAL FACILITIES ENGINEERING COMMAND ATLANTIC DIVISION NAVAL STATION CAMP LEJEUNE NORTH CAROLINA EXPANSION OF HOLCOMB BOULEVARD WATER TREATMENT PLANT ELECTRICAL - RAW WATER PUMP STA. NAVFAC DRAWING NO. 4107603 SIZE: 11x17 SHEET: 70 OF 74 SPEC. DS-B-1644 EFO DWS NO. 207603
--	--

1131
2-1/2 angle conn (sea/ite)

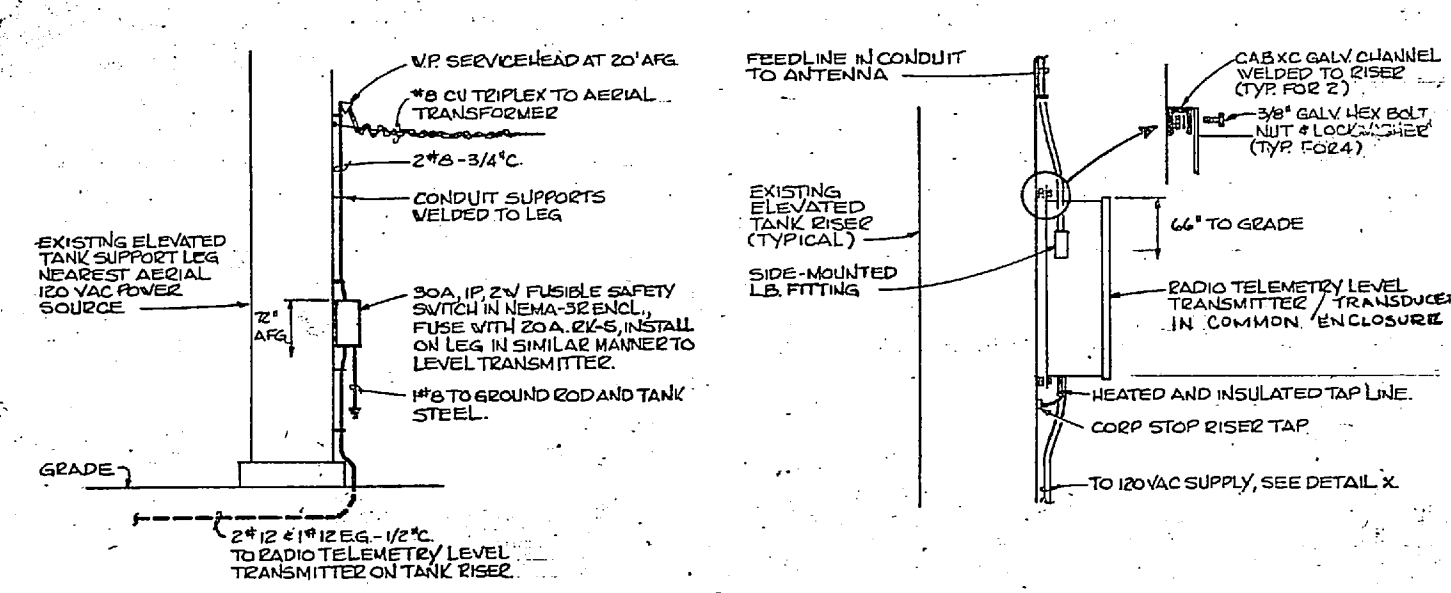
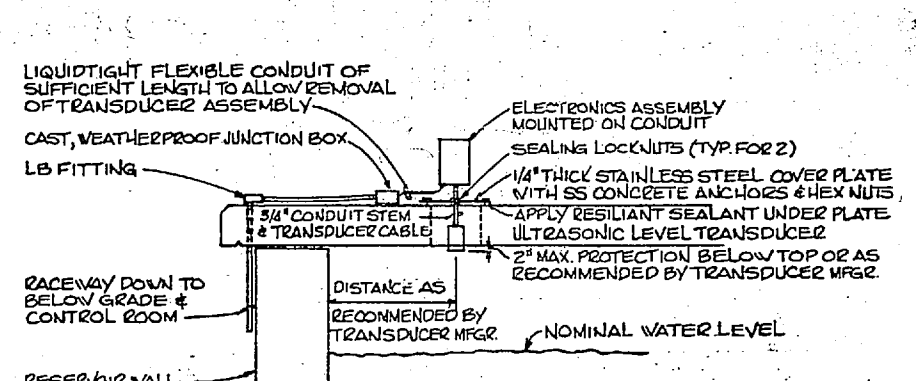
100-1/2 flex
1-310R 2s cover

1139 - 4- round 1/2" pipes
1- 4000 g 1/2"

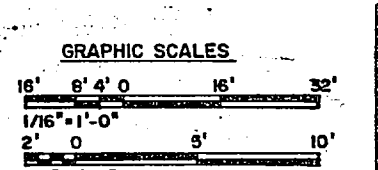
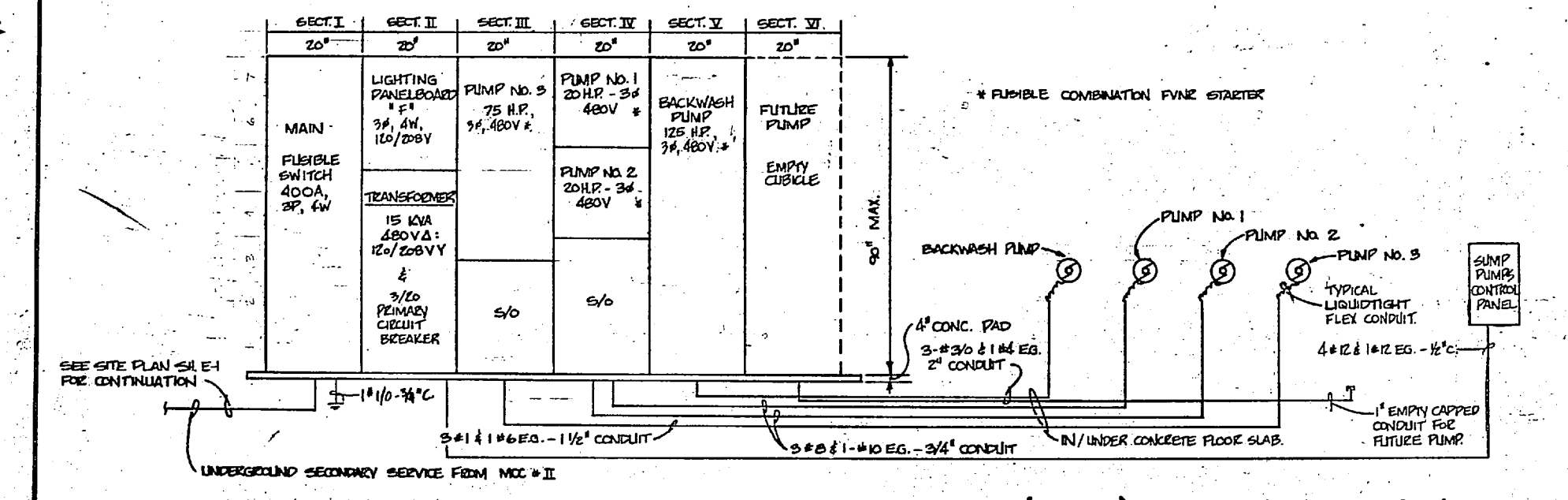
REVISIONS		
REV.	DESCRIPTION	DATE



DESIGNATION TO BE TYPED IN PANEL CIRCUIT DIRECTORY	PHASE LOADINGS			CIRCUIT BREAK TRIP	A/C DISC NO.	ABC	CET. NO.	A/C RATIO	CIRCUIT BREAK TRIP	PHASE LOADINGS			DESIGNATION TO BE TYPED IN PANEL CIRCUIT DIRECTORY			
	A	B	C							A	B	C				
SPARE				1/20	10K 1		7	10K	1/20	1250			RECEPTACLES			
LIGHTS					5		8						VENT FAN - 1/2 HP			
SPARE					17		9						250			
					9		10						250			
					11		12						250			
					13		14						250			
					15		16						250			
					17		18						250			
	475				19		20		1602				UNIT HEATER			
SUMP PUMP CONTROL PANEL	475			3/20	19		20		1602	1602	1602		UNIT HEATER			
	475				21		22		1602	1602	1602		UNIT HEATER			
SPARE				3/20	21		22		1602	1602	1602		UNIT HEATER			
NAMEPLATE ENGRAVING				475	1870	175	SUB-TOTAL "A"			540	SUB-TOTAL "B"			4934	5584	5934
PANEL "F"											SUB-TOTAL "C"			475	1870	175
											GRAND TOTAL			80091	82091	88091
											LINE CURRENT			4L	49	32
											VOLT-AMPERES					
											120/200 VOLTS					

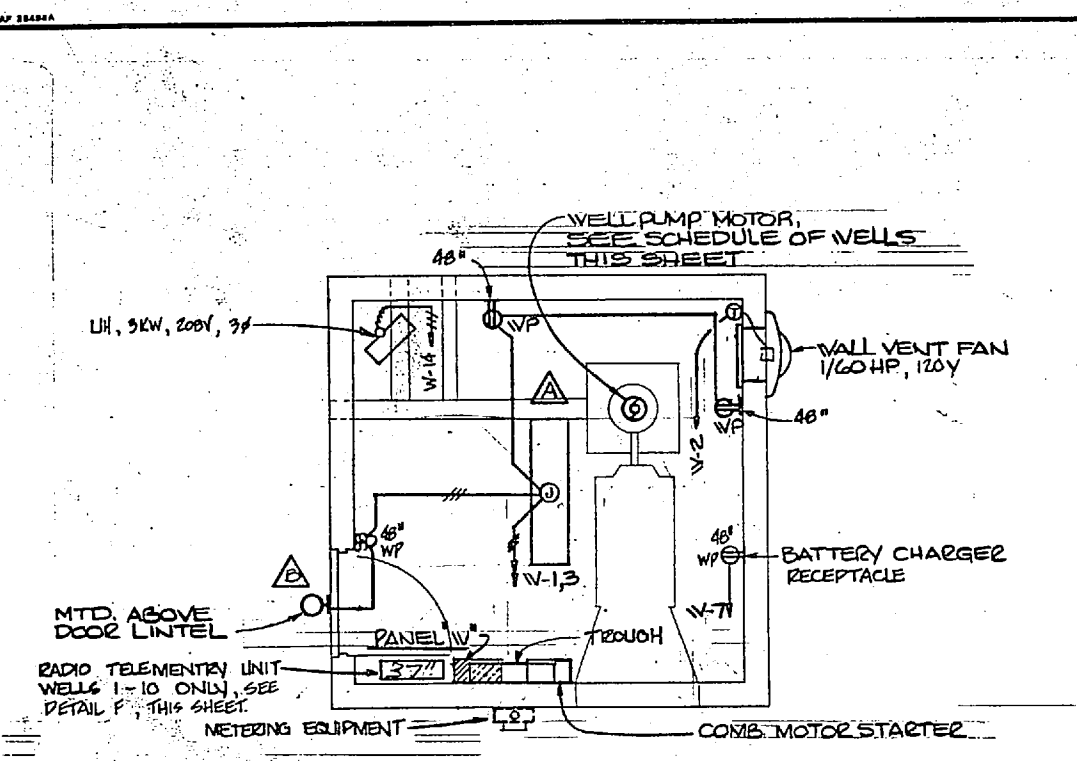


PUMP HOUSE FLOOR PLAN-FINISH WATER RESERVOIR
SCALE 1/4" = 1'-0"



HENRY VON OESCH AND ASSOCIATES CONSULTING ENGINEERS AND PLANNERS WILMINGTON, NORTH CAROLINA		DEPARTMENT OF THE NAVY NAVAL FACILITIES ENGINEERING COMMAND ATLANTIC DIVISION	
DES: RDM (DRB/H/CJ) (CM/RDM)		STATION: CAMP LEJEUNE NORTH CAROLINA	
PROJ: MGR: JRB CM: ENR: JRB		EXPANSION OF HOLCOMB BOULEVARD WATER TREATMENT PLANT	
DATE: 1/14/64		ELECTRICAL FINISH WATER PUMP STA	
DRAWN: MGR CHECKED: JRB		NAVAL FACILITIES NO: 4107504	
SCALE: AS SHOWN		SHEET NO: 80091 PROJECT NO: NE2470-BI-B-1544	
DATE: 1/14/64		SHEET 71 OF 74	





WELL HOUSE PLAN, TYPICAL FOR WELLS NO. 1 THRU NO. 20
SCALE 3/8"=1'-0"

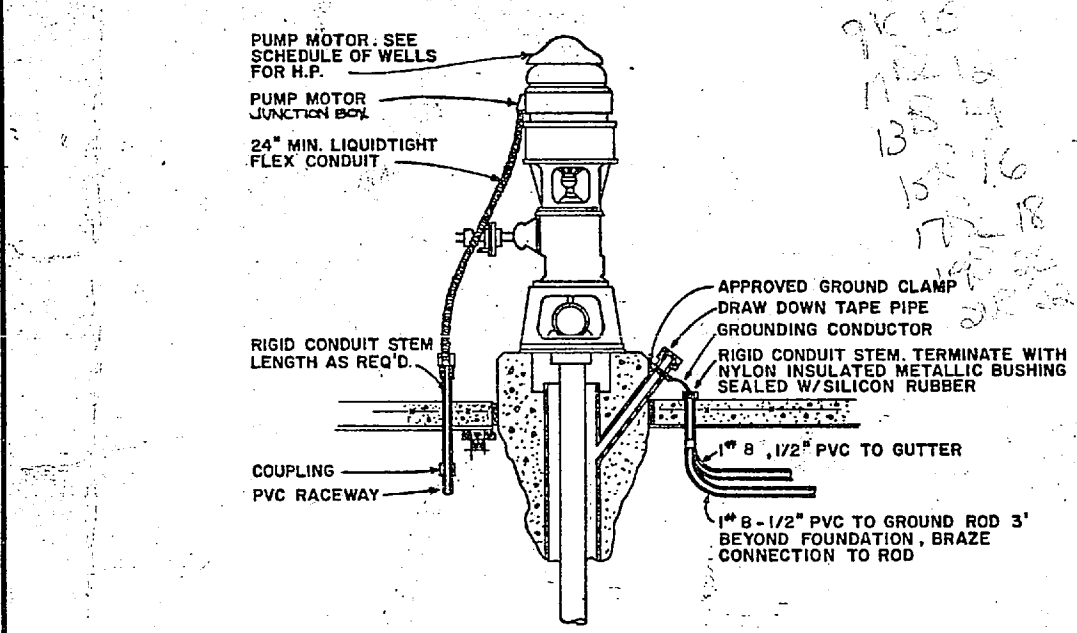
PANEL W SCHEDULE													
3Ø, 2 WIRE, 120/208 VOLTS, 100 AMPERE BUS, 60 AMPERE MAIN CIRCUIT BREAKER, 100% NEUTRAL, SURFACE MOUNTING, NEMA-1 ENCLOSURE, EQUIPMENT GROUND BUS, INTEGRATED EQUIPMENT RATING OF 10,000 RMS SYMMETRICAL AMPERES MINIMUM, I.D.S.F. LABEL, RIGID, FIBERGLASS, ETC.													
DESIGNATION TO BE TYPED IN PANEL CIRCUIT DIRECTORY	PHASE LOADINGS			CIR. NO. TRIP	AC	WELL NO.	A	B	C	CIR. NO. TRIP	AC	DESIGNATION TO BE TYPED IN PANEL CIRCUIT DIRECTORY	
	A	B	C										A
LIGHTING	200			1						2	10 K	50	VENT FAN - 1/60 H.P.
RECEPACLED	360			3						4		100	RADIO TELEMETRY UNIT
SPACE				5						6			SPACE
BATTERY CHARGER	100			7						8			
SPACE				9						10			
SPACE				11						12			
SPACE				13						14	1000		UNIT HEATER
SPACE				15						16	1000		
SPACE				17						17			
NAMEPLATE	300	360		SUB TOTAL "A"						SUB TOTAL "B"			
PANEL W										1055	1100	1000	
3Ø, 2 W										300	360		
120/208 V.										1355	1460	1000	VOLT-AMPERES
										11.5	12.2	8.9	AMPERES

367.6

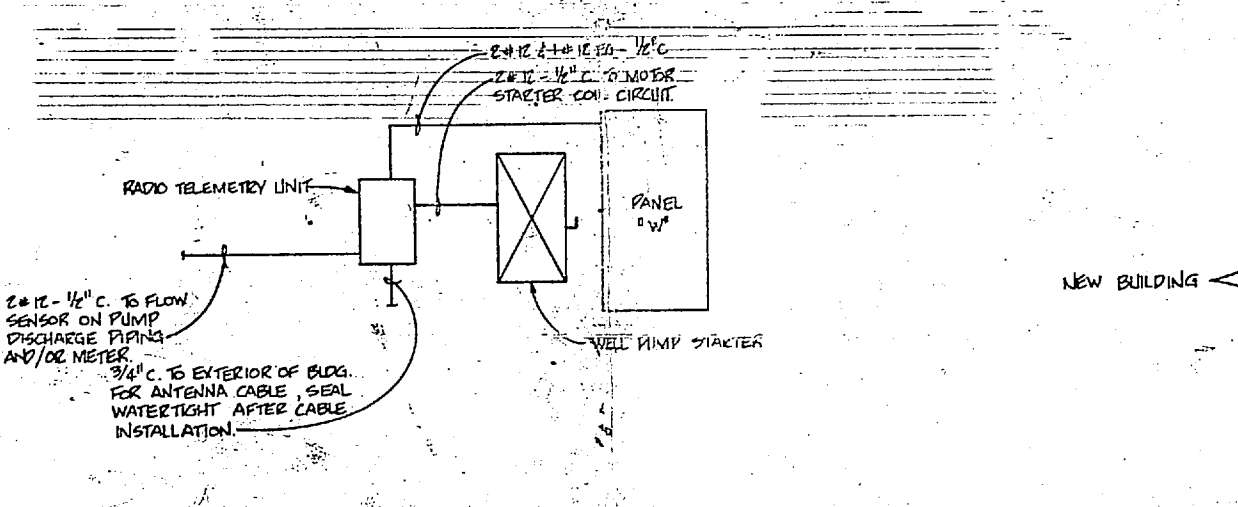
REVISIONS			
NO.	DESCRIPTION	DATE	APPROVED

SCHEDULE OF WELLS						
WELL SITE NO.	SECONDARY SERVICE COND.	WIRE SIZE	PUMP HP	MOTOR STARTER NEMA SIZE	PUMP FEEDER COND.	WIRE SIZE
1	1 1/2"	4-#4	15	2	1"	3#6 @ 1" O.E.D.
2			15			
3			15			
4			15			
5	1"	4-#6	10		3/4"	3#6 @ 1" O.E.D.
6			10			
7			10			
8			10			
9			10			
10			10			
11	1 1/2"	4-#4	15		1"	3#6 @ 1" O.E.D.
12			15			
13			15			
14	1"	4-#6	20	3	3/4"	3-#6 @ 1-#8 O.E.D.
15	1"	4-#6	10	2	3/4"	3-#6 @ 1-#8 O.E.D.
16			10	2	2 1/4"	
17	1 1/2"	4-#4	20	3	1 1/2"	3-#6 @ 1-#8 O.E.D.
18			20	3	1 1/2"	
19			20	3	1 1/2"	
20	1"	4-#6	10	2	3/4"	2#6 @ 1-#8 O.E.D.

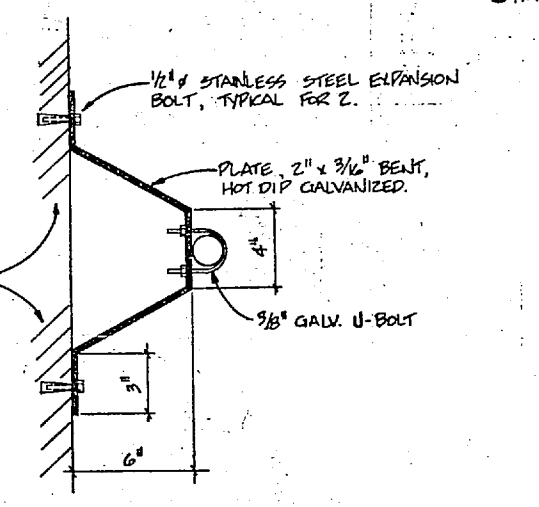
* NOTE: ALL PUMPS ARE 3Ø-208V. COMBINATION STARTER & DISC. SW. SHOWN. CONTRACTOR MAY ELECT TO USE SEPARATE STARTER AND DISC. SW.



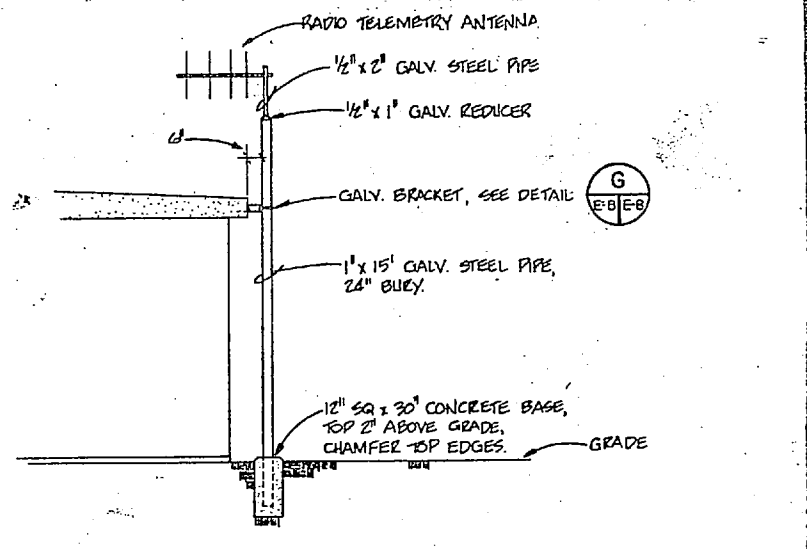
DETAIL - WELL CASING GROUND AND MOTOR CONNECTION
NO SCALE



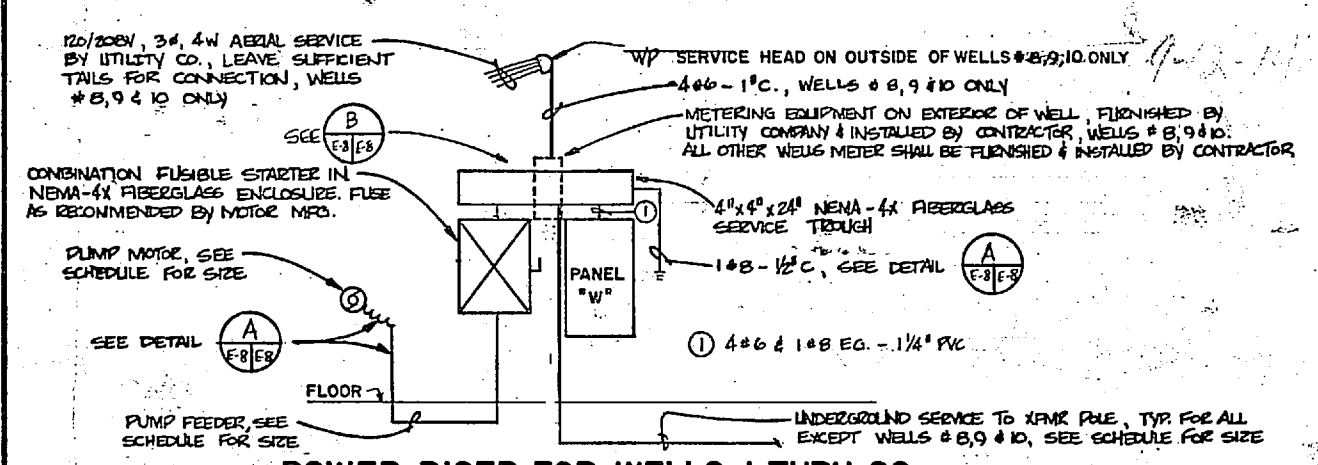
TYPICAL RADIO TELEMETRY UNIT INSTALLATION DETAIL
NOT TO SCALE



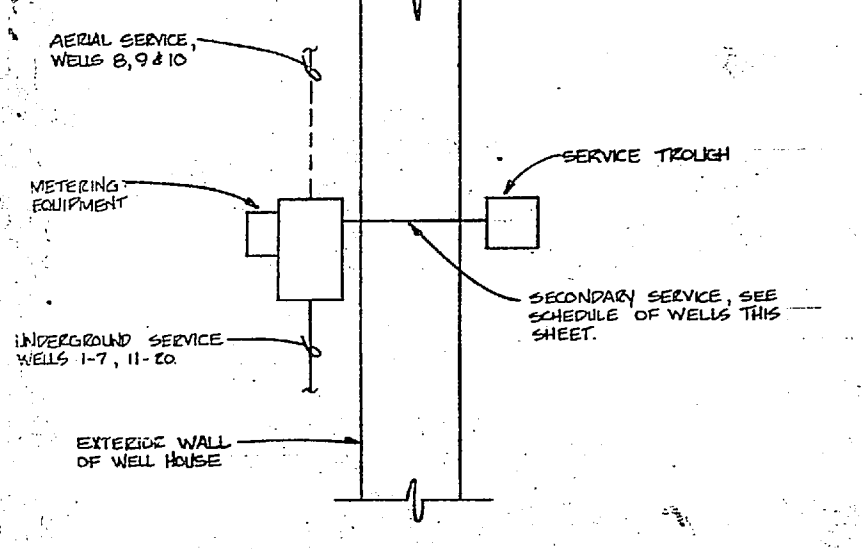
MOUNTING BRACKET DETAIL
NOT TO SCALE



TYPICAL RADIO TELEMETRY ANTENNA INSTALLATION DETAIL
NOT TO SCALE

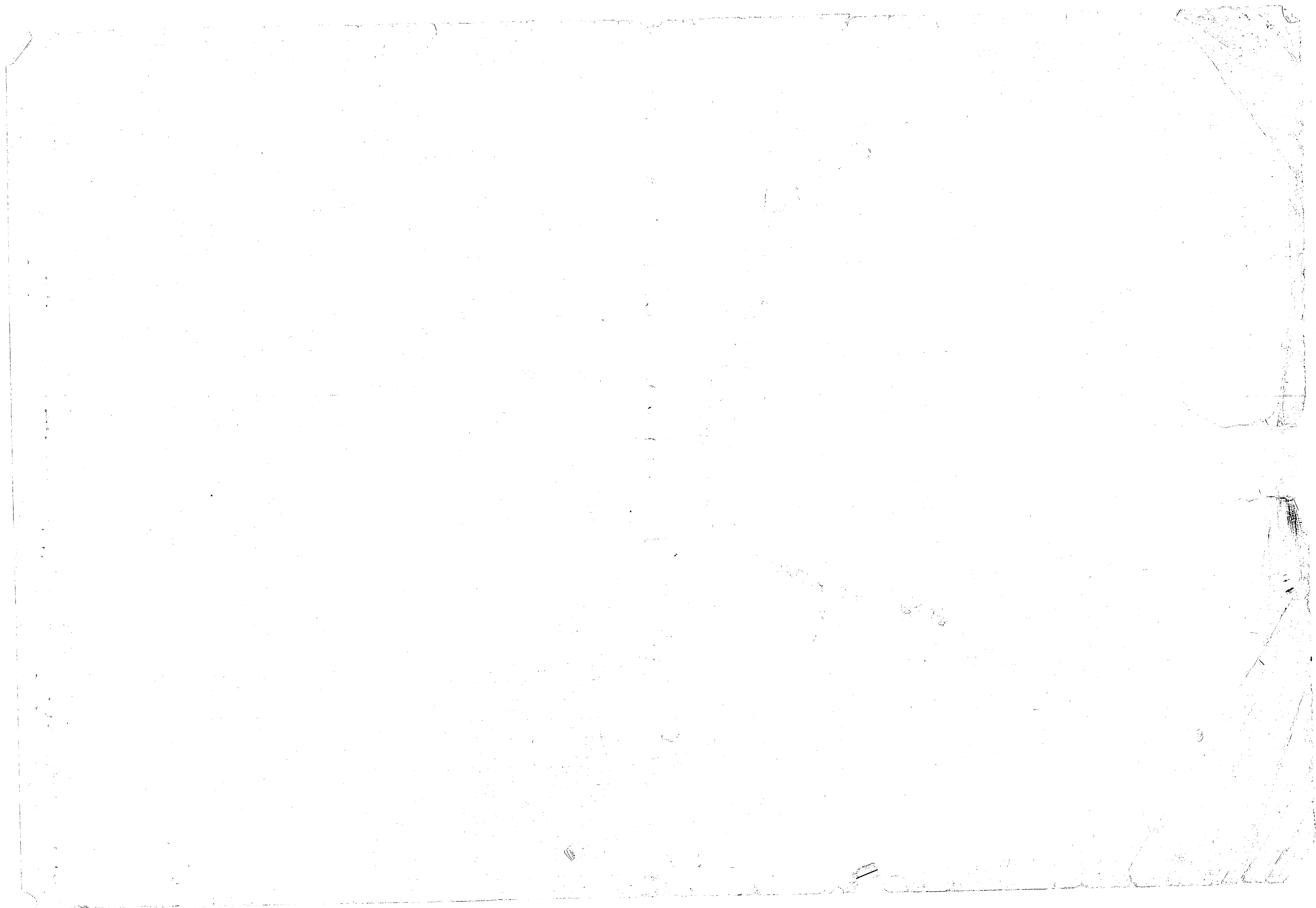


POWER RISER FOR WELLS 1 THRU 20
NO SCALE

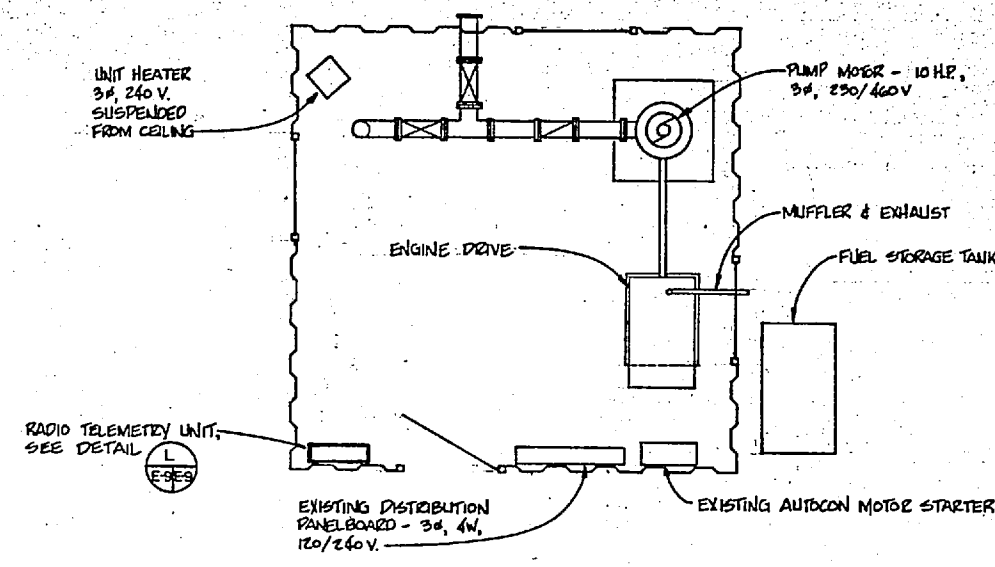


METERING / SERVICE TROUGH DETAIL
NO SCALE

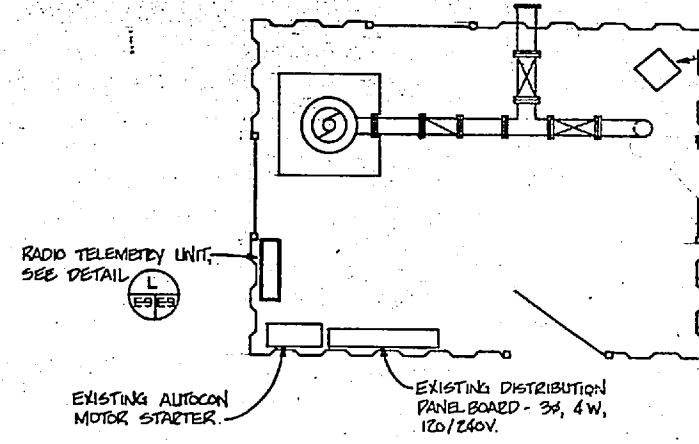
	HENRY VON DEEREN AND ASSOCIATES CONSULTING ENGINEERS AND PLANNERS WILMINGTON, NORTH CAROLINA	DEPARTMENT OF THE NAVY NAVAL FACILITIES ENGINEERING COMMAND ATLANTIC DIVISION NORFOLK, VIRGINIA	
	DES. RDM (OR GBH, CU) CHK. RDM PROJ. MGR. JRB CH. ENR. JRB DATE: 11/16/69	CAMP LEJEUNE NORTH CAROLINA	EXPANSION OF HOLCOMB BOULEVARD WATER TREATMENT PLANT
	EFF. DATE: 11/16/69 NO. 8433 EXPIRES: 11/16/74	ELEC. DIVISION NO. 4107515	ELECTRICAL TYPICAL WELL HOUSE
	ACTIVITY: SATISFACTION DATE: 11/16/69	DRAWING NO. NE2470-B-B-1644	SHEET 72 OF 74 EFD DWG NO. 207605



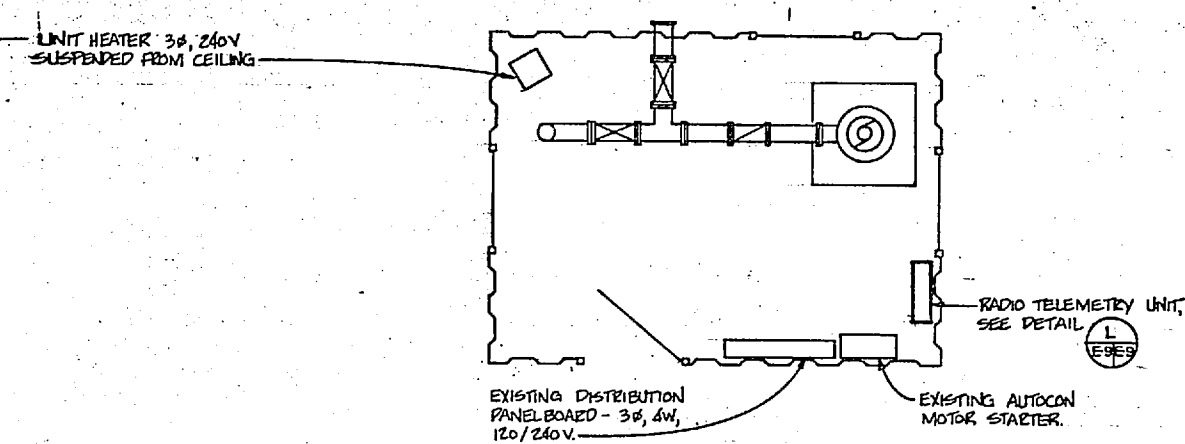
REVISIONS			
NO.	DESCRIPTION	DATE	APPROVED



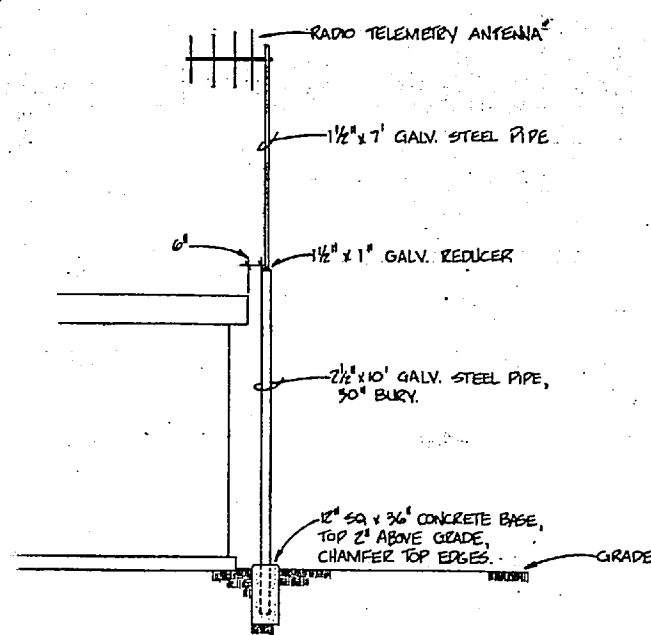
FLOOR PLAN WELLS 643, 645, 646, 647
SCALE: 3/8" = 1'-0"



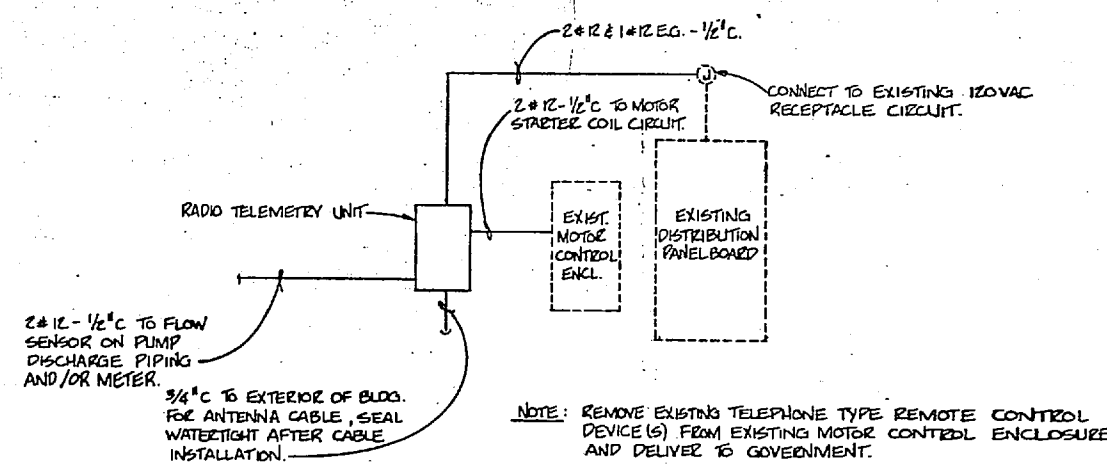
FLOOR PLAN WELL 644
SCALE: 3/8" = 1'-0"



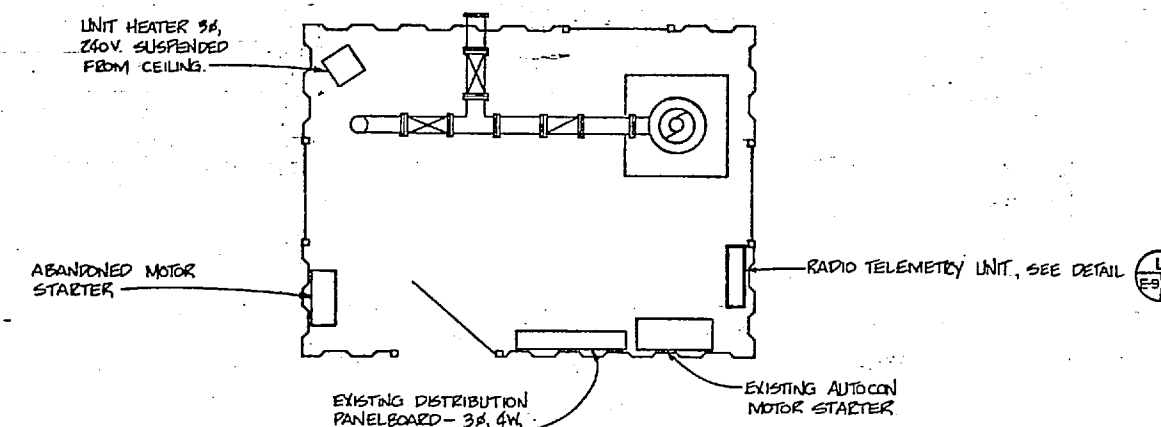
FLOOR PLAN WELLS 648, 649
SCALE: 3/8" = 1'-0"



TYPICAL RADIO TELEMTRY ANTENNA INSTALLATION DETAIL
NOT TO SCALE



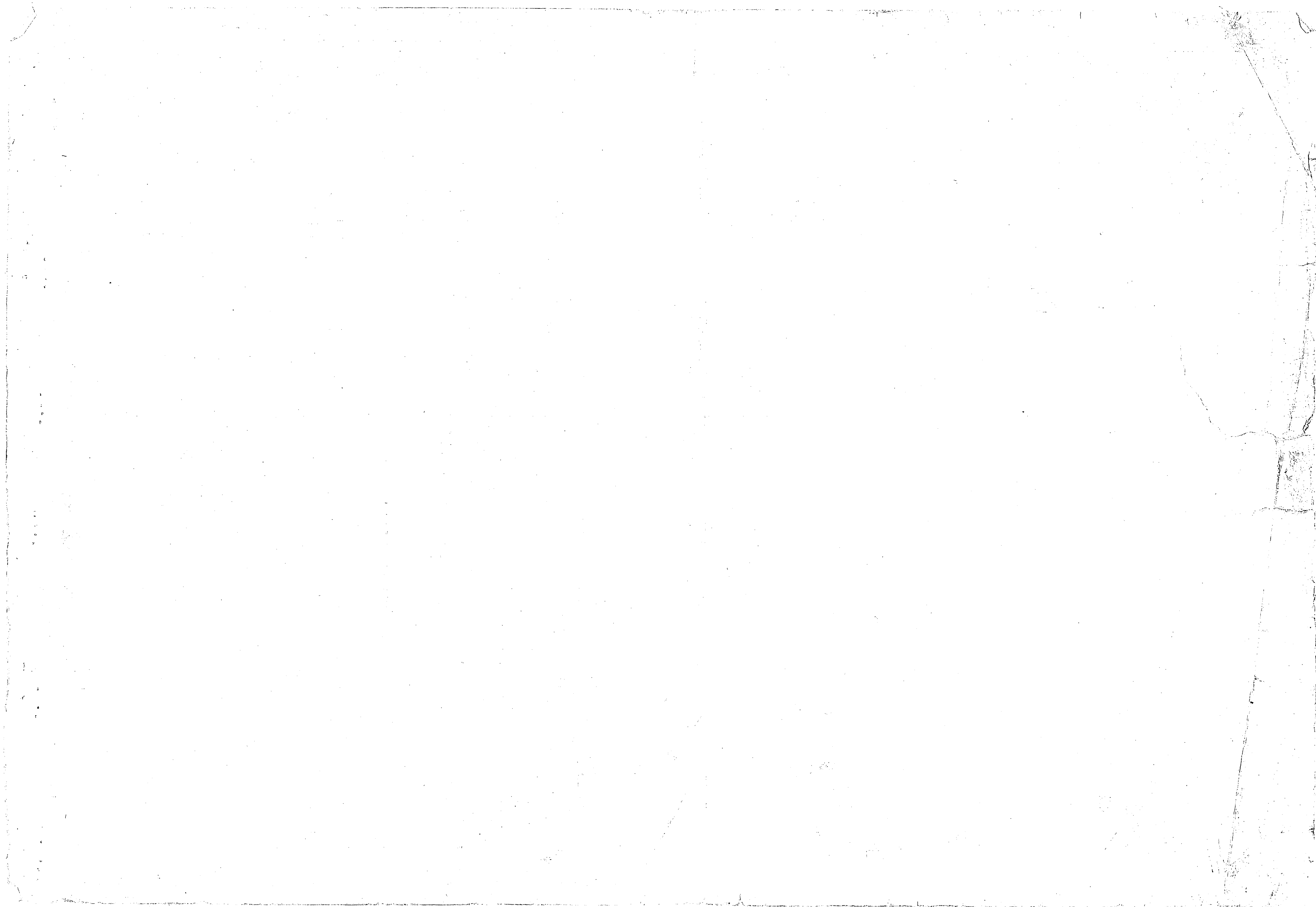
TYPICAL RADIO TELEMTRY UNIT INSTALLATION DETAIL
NOT TO SCALE



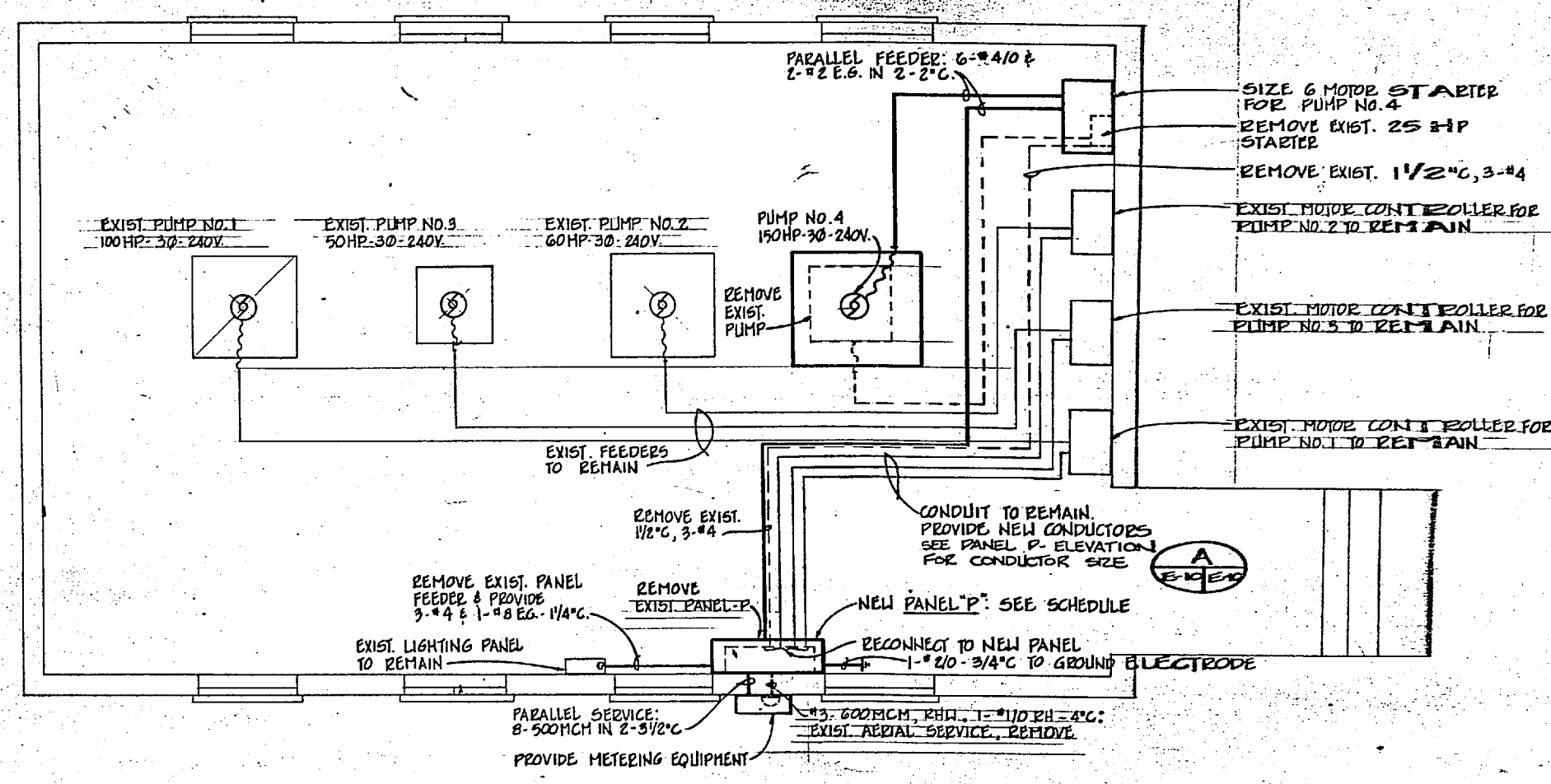
FLOOR PLAN WELL 650
SCALE: 3/8" = 1'-0"

E-9

	HENRY VON OEBEN AND ASSOCIATES CONSULTING ENGINEERS AND PLANNERS WILMINGTON, NORTH CAROLINA	DEPARTMENT OF THE NAVY NAVAL FACILITIES ENGINEERING COMMAND	ATLANTIC DIVISION WHEELERS, VIRGINIA
	SEC RDM DR WPM CHN RDM PRG. MGR JRB CH ENR JRB	CAMP LEJEUNE NORTH CAROLINA	EXPANSION OF HOLCOMB BOULEVARD WATER TREATMENT PLANT
	ISSUED BY: [Signature] DATE: 2/14/64	EXISTING WELL HOUSES	ENV/AC DESIGN NO: 4107606
	APPROVED BY: [Signature] DATE: 2/14/64	CONTR. CONTR. NO: NS2470-BI-B-1644	SCALE: 05-BI-1644 SHEET 73 OF 74 207606



REVISIONS		
NO.	DESCRIPTION	DATE



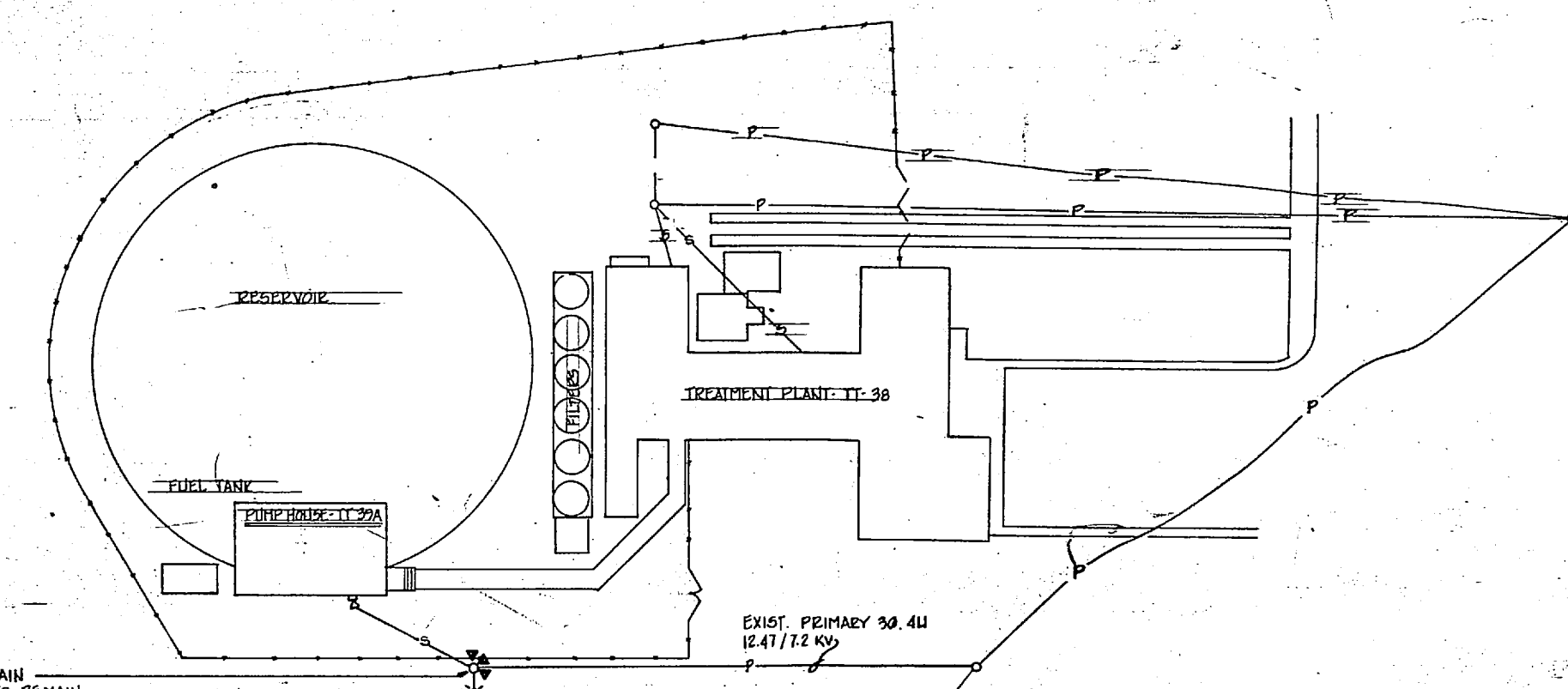
PANEL P 3 PHASE, 4 WIRE, 120/240 VOLTS, 800 AMPERE BUS, 800 AMPERE MAIN CIRCUIT BREAKER, 100 % NEUTRAL SURFACE MOUNTING, NEMA ENCLOSURE, EQUIPMENT GROUND BUS, INTEGRATED EQUIPMENT RATING OF 18,000 KVA SYMMETRICAL AMPERES MINIMUM, U.S.E. LABEL 8202

DESIGNATION TO BE TYPED IN PANEL CIRCUIT DIRECTORY	PHASE LOADINGS			CIRCUIT BREAKER NO.	ABC	CIRCUIT BREAKER PHASE LOADINGS			DESIGNATION TO BE TYPED IN PANEL CIRCUIT DIRECTORY	
	A	B	C			A	B	C		
SPACE	-	-	-	3/20	1	-	-	-	252	SPACE
SPACE	-	-	-	3/20	8	-	-	-	252	SPACE
PUMP #2, 60HP	154	-	-	3/20	5	6	3/20	130	-	PUMP #2, 60HP
PUMP #3, 60HP	154	-	-	3/20	5	6	3/20	130	-	PUMP #3, 60HP
PUMP #1, 100HP	248	-	-	3/20	7	6	3/20	360	-	PUMP #1, 100HP
	248	-	-					360		

NAMEPLATE ENGRAVING: 402 402 402 SUB-TOTAL 7" SUB-TOTAL 7" 519 410 519
PANEL "P" SUB-TOTAL 7" 402 402 402
3Ø-4 WIRE SUB-TOTAL 921 892 921 VOLT-AMPERES TOTAL LOADING
120/240 VOLTS LINE CURRENT 637 608 637 AMPERES PUMPS #1 & #4 ONLY

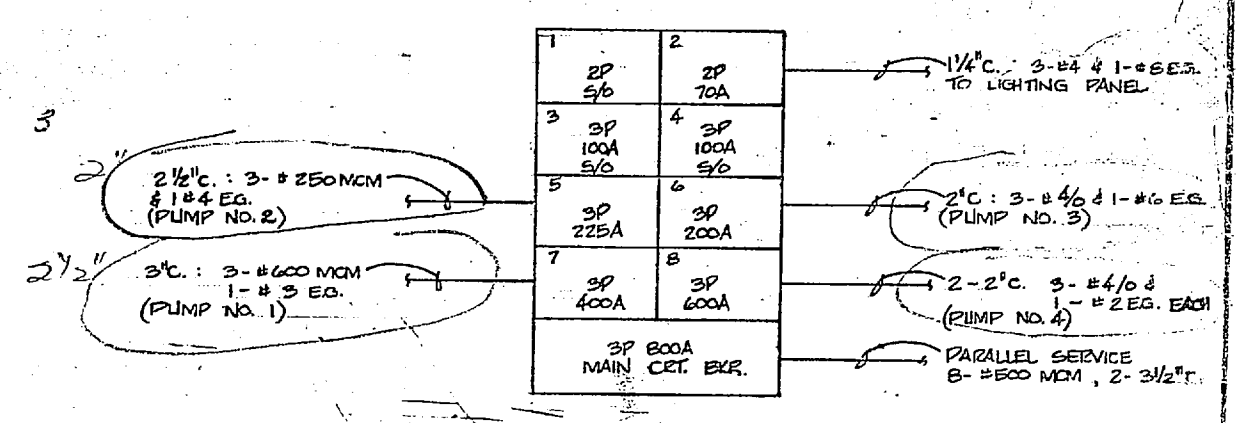
*SEE SEQUENCE OF PUMP CONTROLS

PUMP HOUSE BUILDING TT-39A TARAWA TERRACE



EXISTING 35' 2 POLE TO REMAIN
EXISTING 1-DE. FB PDS-3-N TO REMAIN
EXISTING PROTECTIVE EQUIPMENT WITH MOUNTING BRACKETS TO REMAIN
REMOVE EXIST. TTT - 6x50KVA, 6 1-100 KVA, 12.47KV Δ: 120/240V Δ
PROVIDE TTT - 6x100KVA, 6 1-150 KVA CSP XFMRS, 12.47KV Δ: 120/240V Δ
PROVIDE NEW PRIMARY FUSES
CONNECT EXIST. RESIDENTIAL SECONDARY SIDE AND AREA LIGHT TO 150 DIA WIRE
PROVIDE 3ØPE, PARALLEL #410
EXIST COMMUNICATIONS CABLES TO REMAIN

SITE PLAN
SCALE: 1"=20'-0"

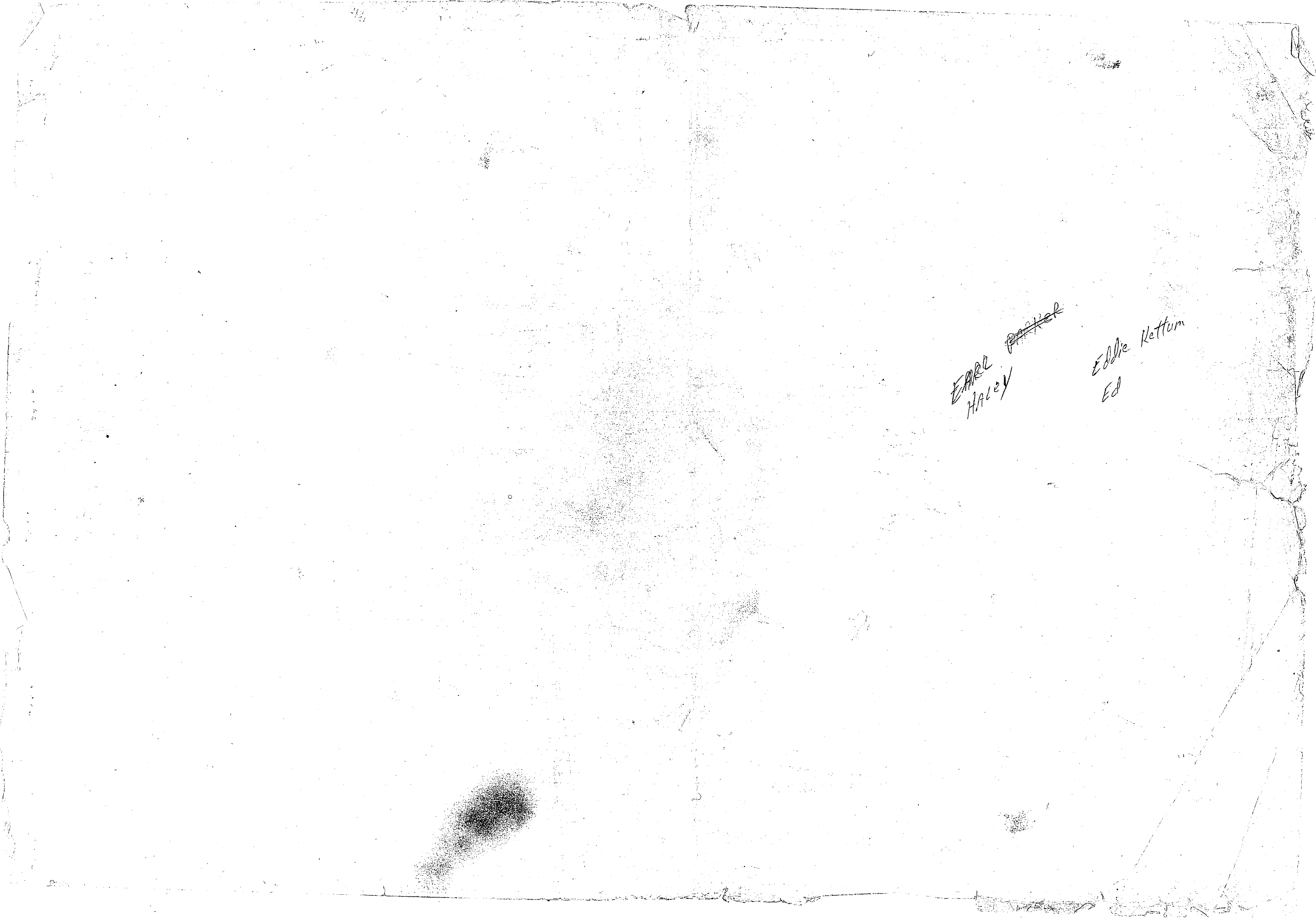


PANEL "P" ELEVATION / RISER
NOT TO SCALE

1714
1914 = 1812"

1" = 10'

	HENRY VON GSELE AND ASSOCIATES CONSULTING ENGINEERS AND PLANNERS WILMINGTON, NORTH CAROLINA DES. RDM OR WPJ CHK. RDM DATE: 11/14/14 TITLE: PROJECT ENGINEER NO. 101114	DEPARTMENT OF THE NAVY NAVAL FACILITIES ENGINEERING COMMAND ATLANTIC DIVISION NAVAL STATION CAMP LEJEUNE NORTH CAROLINA EXPANSION OF HOLCOMB BOULEVARD WATER TREATMENT PLANT ELECTRICAL - TARAWA TERRACE
	SHEET NO. 80091 DATE: 4/07/07 SCALE: AS SHOWN SPEC. 05-BI-1644	SHEET 78 OF 78 207607



~~EARL~~
Haley

Eddie Kettum
Ed

SCHEDULE OF POLES

NOTE: *4-FB, 15F23-N, ETC. ARE POLE DETAIL DESIGNATION SYMBOLS. REFER TO LAYOUT SKETCHES 75-153021-1.1 THROUGH 75-153021-1.10 BOUND WITH SECTION 1302 OF THE SPECIFICATIONS FOR AN EXPANDED AND PROPER USE OF THE SYMBOLS.

ELECTRICAL LINE NO.	EQUIPMENT	WELL SITE NO.	POLE		CROSSARM CONSTRUCTION	HORIZONTAL TRANSMISSION CONSTRUCTION	HORIZONTAL CLEARANCE CONSTRUCTION	SHEET NUMBER REFERENCE	AIRLESS CONSTRUCTION	TRANSFORMER PROTECTIVE EQUIPMENT	ANCHOR	TYPE	CONDUIT RISER		REMARKS	
			EXIST	NEW									HEIGHT CLASS	WIRE SIZE		
A-1, A-2	EXISTING	1,2	X	30 4	X-FB	15F23		U-1, C-3								
	NEW															REMOVE X-FB & 1-T (10 KV)
A-3	EXISTING	3	X	30 4	DX-DE-FB X-FB	15F23		U-1, C-3								
	NEW															*3 WIRE DELTA CONNECTED 12.47 KV PRIMARY
A-4	EXISTING	4	X	30 4	X-FB	15F23		U-1, C-3								
	NEW															*3 WIRE DELTA CONNECTED 12.47 KV PRIMARY
A-1-1, A-2-1, A-3-1		1,2,3	X	30 3	DX-DE-FB X-FB			U-1, C-3								
B-1	EXISTING	5	X	30 4	X-FB	15F23-N		C-3								
	NEW															
B-2	EXISTING	6	X	30 4	X-FB	15F23-N		C-3								
	NEW															
B-1-1		5	X	30 4	X-FB	15F23-N		C-3								
B-1-2, B-2-1		5,6	X	30 3	DX-DE-FB X-FB			C-3								
B-2-2		6	X	30 3	X-FB			C-3								
C-1	EXISTING	7	X	30 4	DX-DE-FB	15F23-N		U-4								
	NEW															
C-2, C-3, C-4, C-5, C-6, C-7, C-8, C-9			X	30 4	X-FB	15F23-N		U-4								
C-10			X	30 3	DX-DE-FB X-FB			U-4, C-4								
C-11			X	30 3	X-FB			U-5								
EXISTING RAW WATER LINE C'		8,9,10						U-5								
D-1	EXISTING		X	30 4	DX-DE-FB	15F23-N		U-2								
	NEW															
D-1-A, D-4-A, D-2-A, D-3-A, D-29-A, D-29-B			X	30 4				U-2, U-3								
D-6, D-5			X	30 4	X-FB	15F23-N		U-2, U-3								
D-7, D-25, D-27			X	30 4	X-FB	15F23-N		U-2, U-3								
D-3, D-9, D-31, D-32			X	30 4	X-FB	15F23-N		U-2, U-3								
D-2, D-4, D-3, D-8, D-10, D-12, D-13, D-14, D-15, D-17, D-18, D-19, D-20, D-22, D-24, D-28, D-29, D-33, D-34, D-35, D-36, D-37, D-38			X	30 4	X-FB	15F23-N		U-2, U-3								
D-30			X	35 3	DX-DE-FB X-FB			U-3, U-5								
D-21 (SEE D-21 BELOW)								U-2								
D-31 (SEE D-31 ABOVE RIGHT)								U-2, C-5								
D-16			X	30 4	X-FB	15F23-N		U-2								
D-11			X	35 3	DX-DE-FB X-FB			U-2, C-5								
D-21	EXISTING		X	30 4	DX-DE-FB	15F23-N		U-3, U-4								
	NEW															
D-21-A			X	30 4				U-3, U-4								
D-21-1, D-21-2, D-21-3			X	30 4	X-FB	15F23-N		U-4								
D-21-4			X	35 3	DX-DE-FB X-FB			U-4, U-5								

NOTES: (1) ALL PRIMARY IS 3/8" 4 WIRE 12.47/12 KV, WYE CONNECTED, #4 ANNC BASE STRANDED COPPER W/O.
 (2) ALL TRANSFORMER CONNECTIONS ARE WYE-WYE, 12.47/12 KV, 150/200 V, 3/8" 4 WIRE UNLESS NOTED TO BE DELTA-WYE, 12.47/12 KV, 150/200 V.
 (3) ALL GUNTS ARE 5/16" WITH 10" ANCHOR. SPAN GUNTS ARE 5/16"

SIZE	GRADE OF CONSTRUCTION	TEMPERATURE, °F	SACS FOR SPAN LENGTH, IN.			
			100 FT.	125 FT.	150 FT.	200 FT.
4	ALL	50	5.5	5.5	15	25
		60	8	12	19	24
		90	12	17	23.5	31

EU-2

HENRY VON OISEN AND ASSOCIATES
 CONSULTING ENGINEERS AND PLANNERS
 WILMINGTON, NORTH CAROLINA

DEPARTMENT OF THE NAVY - NAVAL FACILITIES ENGINEERING COMMAND

NAVAL STATION
 CAMP LEJEUNE
 NORTH CAROLINA

EXPANSION OF HOLCOMB BOULEVARD
 WATER TREATMENT PLANT

SCHEDULE OF POLES

DATE: 2/14/64
 DRAWN BY: R. J. HAYES
 CHECKED BY: J. H. HAYES
 PROJECT NO.: 80091
 SHEET NO.: 207597
 SCALE: AS SHOWN
 DATE: 05-81-1644

outside lite
inside lite
up # 123456
Filter tanks
FAN

15735