

Memorandum

11800

FAC

DATE: DEC 24 1986

FROM: Assistant Chief of Staff, Facilities, Marine Corps Base, Camp
Lejeune

TO: Base Maintenance Officer
Public Works Officer

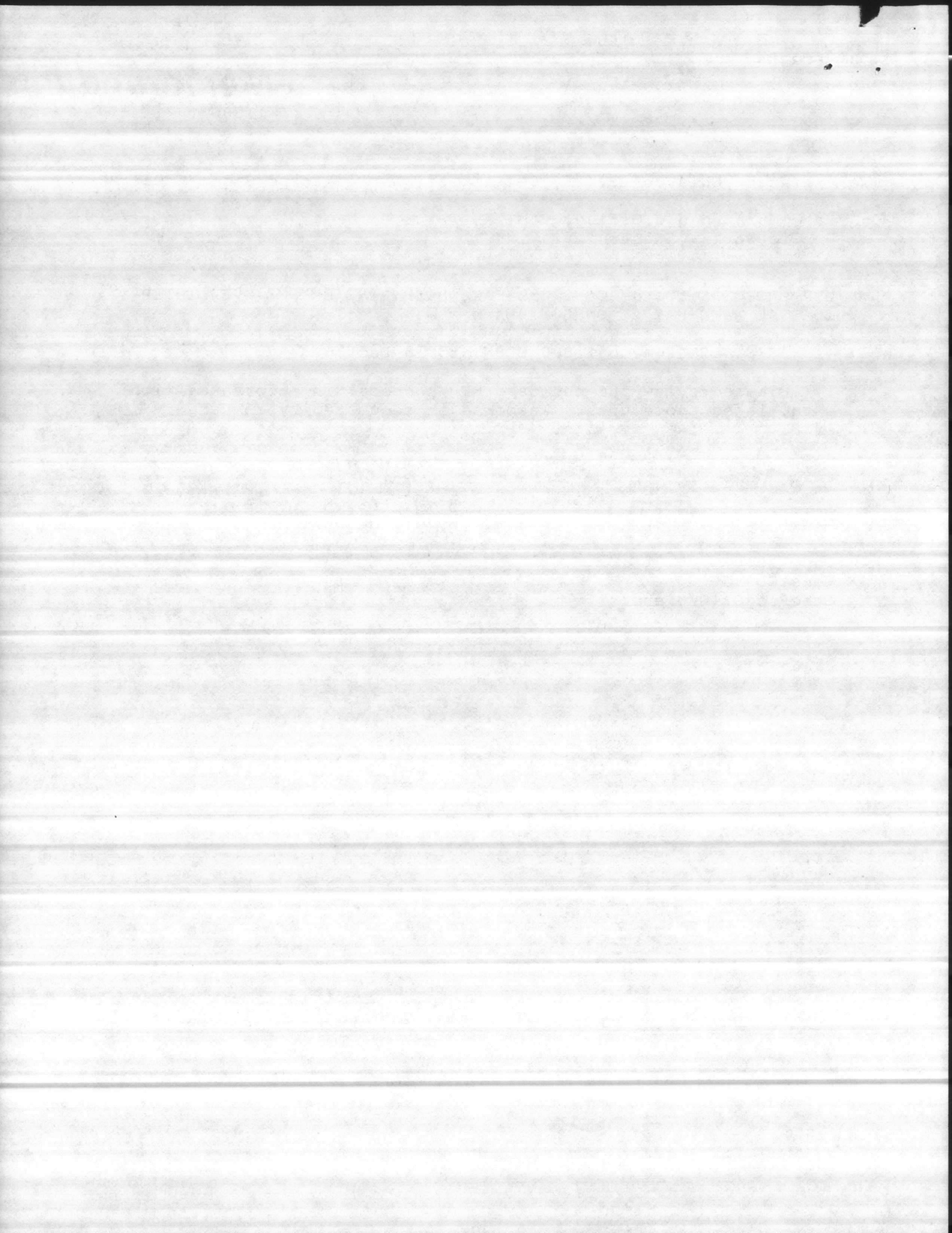
SUBJ: MIP PROPOSAL NO. 87-CLNC-030-FAC, HIGH RISE BRIDGE OVER INTER-
COASTAL WATERWAY AT ONSLOW BEACH

Encl: (1) AC/S BOSMAD memo 11800 BOSM dtd 18 Dec 86

1. Please review the enclosed MIP proposal in accordance with established procedures. Response is requested by 26 January 1986.


B. W. ELSTON
By direction

Copy to:
ConstCoord
SpecProj0 (w/o encl)

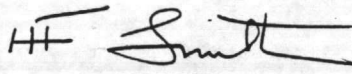


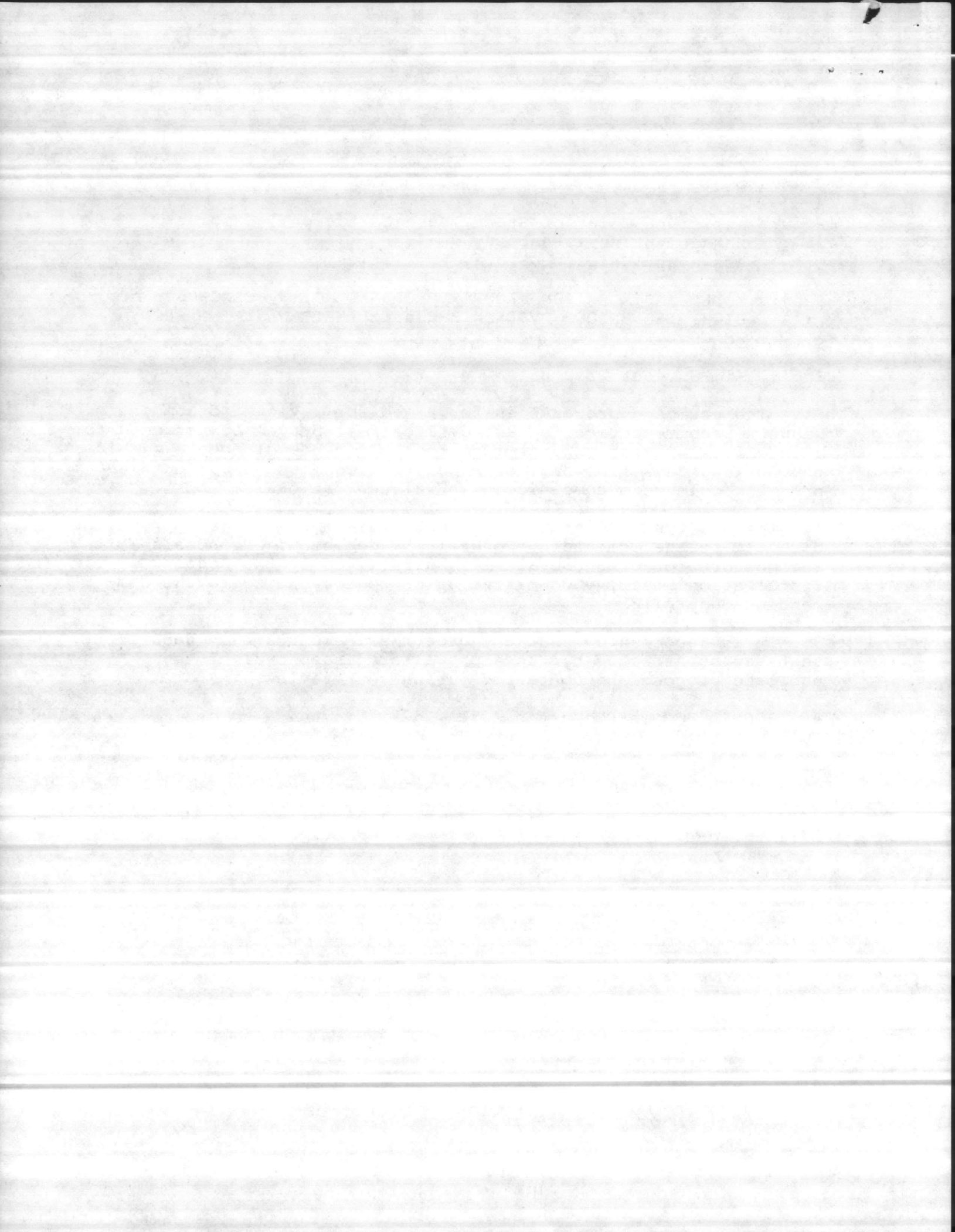
11800
BOSM
DEC 18 1988

MEMORANDUM

From: Assistant Chief of Staff, Base Operational Support
Management Assistance
To: Assistant Chief of Staff, Facilities
Subj: MODEL INSTALLATION PROGRAM PROPOSAL NO. 87-CLNC-030-FAC,
HIGH RISE BRIDGE OVER INTERCOASTAL WATERWAY AT ONSLOW
BEACH
Encl: (1) Subject Proposal

1. The enclosed proposal is forwarded for review and comment. Request recommendation for approval or disapproval be returned to this office with an excerpt from the applicable directive within ten working days from date of receipt. Recommendation for disapproval should be accompanied by a written rationale.
2. This office will forward proposals recommended for approval directly to the Commanding General for decision. Proposals recommended for disapproval will be reviewed by the Model Installation Steering Committee prior to forwarding to the Commanding General.
3. It is recommended that any other Marine Corps Base department that may be affected by the approval or disapproval of the enclosed proposal be contacted during your review.
4. BOSMAD POC is D. Martin, 5521/1577.


H. F. SMITH





MODEL INSTALLATION PROGRAM

PROPOSAL

MARINE CORPS BASE CAMP LEJEUNE



INSTRUCTIONS:

1. COMPLETE ALL INFORMATION REQUESTED.
2. PLEASE PRINT OR TYPE LEGIBLY.
3. USE ADDITIONAL SHEETS IF NECESSARY.
4. FORWARD COMPLETED PROPOSAL TO AC/S. BOSMAD. MCB

TITLE OR SUBJECT OF PROPOSAL

High rise bridge over Intercoastal Waterway at Onslow Beach

NAME, TITLE, GRADE/RANK, UNIT OF SUBMITTER(S)

Glenn Fisher, Heavy Mobile Equipment Repair Inspector, WG-11

DO NOT WRITE IN THIS SPACE

DATE RECEIVED

16 Dec 86

PROPOSAL NUMBER

87-CLNC-030-FAC

PHONE

(919) 451-2295

CURRENT PROCEDURE

The swing bridge over the Intercoastal Waterway at Onslow Beach currently needs repairs costing a minimum of \$210,000.00 to bring the bridge to applicable standards. Over the next ten years, the bridge will require a minimum cost of \$500,000.00 for repairs and will cost \$1,636,933.00 for operators, not including administrative costs.

PROPOSED PROCEDURE (If a directive/order must be waived to implement proposal-Identify the specific reference.)

Build a high rise bridge across the Intercoastal Waterway at Onslow Beach similar to the bridge to be constructed on Highway 172 near Sneads Ferry, NC.

BENEFITS/ADVANTAGES

No traffic flow interruptions, no breakdowns, no operator or administrative costs with minimal maintenance costs.

I (WE) UNDERSTAND THAT THE ACCEPTANCE OF A CASH AWARD FOR THE USE OF THIS PROPOSAL BY THE UNITED STATES GOVERNMENT SHALL NOT FORM THE BASIS OF A FURTHER CLAIM OF ANY NATURE UPON THE UNITED STATES BY ME (US), MY (OUR) HEIRS, OR ASSIGNS.

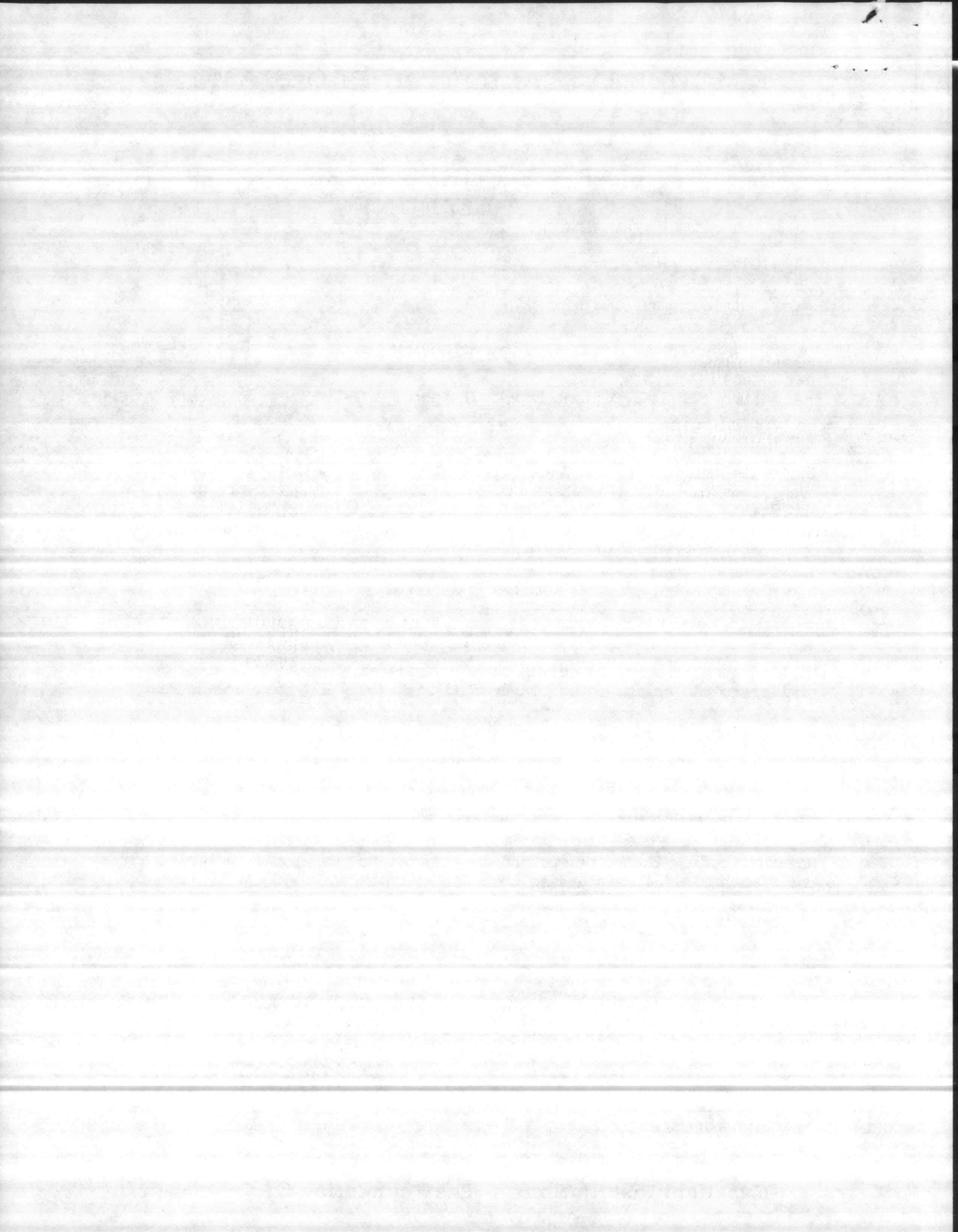
(SIGNATURE AND DATE)

Glenn Fisher
Glenn Fisher (SIGNATURE AND DATE)

MODEL INSTALLATION PROPOSAL

MCBCL 11800

Excellent Installations — The Foundation Of Defense



11800
MAIN
07 JAN 1987

FIRST ENDORSEMENT on AC/S, Fac memo 11800 FAC of 24 Dec 86

From: Base Maintenance Officer
To: Assistant Chief of Staff, Facilities
Subj: MODEL INSTALLATION PROGRAM PROPOSAL 87-CLNC-030-FAC,
HIGH RISE BRIDGE OVER INTERCOASTAL WATERWAY AT ONSLOW
BEACH

1. Returned.
2. An inspection report prepared by Hobbs, Upchurch and Associates indicates the Onslow Beach Bridge is rated eligible for replacement by the formula used by the Federal Highway Administration (FHWA). The Highway Bridge Replacement and Rehabilitation Program Sufficiency Rating Formula uses a percentage of 100 to represent an entirely sufficient bridge and zero percent for an entirely insufficient/deficient bridge. A bridge covered by the FHWA Program with a sufficiency rating of 50 or less is considered to be eligible for replacement. The Onslow Beach Bridge has been rated at 42.8 sufficiency.
3. Accordingly, we are in concurrence with the suggested proposal. Recommend the Assistant Chief of Staff, Facilities include a MILCON project in the next submission of the Military Construction Program.

M. G. LILLEY

Copy to:
PWO
ConstrCoord
SpecProj0

11800
BOSM
APR 30 1987

From: Commanding General, Marine Corps Base, Camp Lejeune
To: Glenn Fisher, Base Maintenance Division
Via: (1) Assistant Chief of Staff, Facilities *Bwe 5/4/87*
 (2) Base Maintenance Officer

Subj: MODEL INSTALLATION PROGRAM PROPOSAL NO. 87-CLNC-030-FAC,
 HIGH RISE BRIDGE OVER INTERCOASTAL WATERWAY AT ONSLOW
 BEACH

1. Your proposal to construct a high rise bridge across the intercoastal waterway at Onslow Beach has been reviewed. It was determined that the construction of a high rise bridge is cost prohibitive. Also, with the low volume of traffic, the existing bridge structure is estimated to have an additional 15 years of service. For these reasons, your proposal has been disapproved.

2. The attached certificate is enclosed in appreciation for your participation in the Model Installation Program. Any future ideas you may have which promote efficiency and cost effectiveness at our installation will be welcomed. Your continued support in helping to make the Camp Lejeune community a better place to work and live is encouraged.

H. F. SMITH
By direction

APR 30 1987

SMITH



[Faint, mostly illegible text, possibly a letter or report, with some words like 'SMITH' and 'APR 30 1987' visible.]