

RATE OF FLOW GAUGE

- (O) Pulley Shaft: Use water pump grease (one turn on cup 30 days)
- (O) Bearing Points: Use 3050 (Few drops 30 days)

EMERGENCY GENERATOR

- (M) Motor Gas: Use 3050 (Change 4 Mo.)
- (O) " " Check oil level each time operated.)
- (M) " " Generator, Distributer, Governor, (use 3050 Few drops every 4 Mo.
Motor Gas: Water Pump, (Water Pump Grease.
- (M) Generator:

LIME PUMPS

- (O) Elec. Motor: Use 3050 (Few drops each week)
- (M) " " Gear case (S.A.E. 140) change 3 Mo.
- (O) Pump Connecting rod & Cross Head: Use type J grease (every ² hrs.)

LIME TANKS

- (M) Motor Elec: Type J grease (15 days) on 15th and 30th of each Month.)
- Motor Elec: Gear Case: Use Vallesso No. 150 (2 Mo.
- (O) " " Check oil level daily 8-4 shift.

DRILL PRESS

- (M) Motor Elec: Use 3050 (few drops 15 days)

BENCH GRINDERS

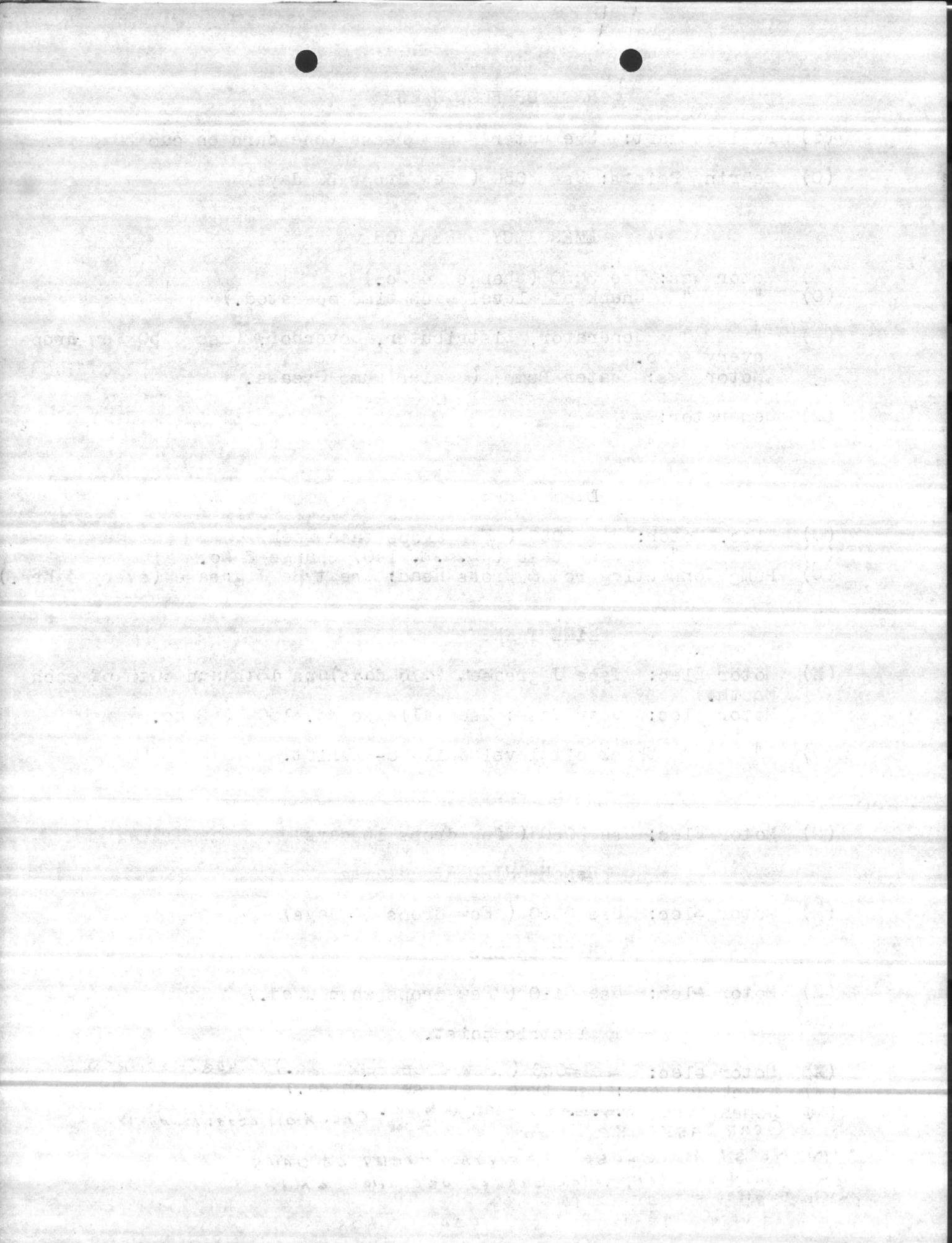
- (M) Motor Elec: Use 3050 (Few drops 15 days)

HAND DRILLS

- (M) Motor Elec: Use 2110 (Few drops when used.)

Electric Hoist.

- ~~(M)~~ Motor Elec: ~~Use 3050 (few drops each Mo.)~~ No. Lub. Required
- (M) Track Rollers: Use type J grease each Mo.)
- ~~(M)~~ Wench Use ~~S.A.E. 90~~ Change ~~8~~ Mo. Check oil level MONTHLY.
GEAR CASE S.A.E. 140 ¹²
- (M) Hoist Rope - USE. S.A.E. 140. EVERY 60 DAYS
- (M) Limit Switch ^{Motor} BRAKE. USE 2110 - 6 Mo.
- (M) Gear Trolley 5 USE. 2110 - 6 Mo
- (M) Motor Driven Trolley - USE. 1430 - 30 DAYS.



TENT CAMP

- (O) Motor Elec: Use 3050 (Change every 3 Mo. Operator check daily & keep filled.
- (O) Pump Use type J Grease every 3 Mo.
- (O) Aux. Motor: Crank Case Use 3065 (change every 4 Mo.
 - " " Water pump use type J.(A turn on cup each time run.)
 - " " Generator, Distributer, Governor, 3050 (few drops every 30 days.
 - Oil filter (repacked each time drained.)
- (O) Aux. Motor: Check oil level each time operated.

() Motor: See 2000 (change every 3000 miles)
Oil filter: See 2000

() Spark plug: Change every 3000 miles

() Air filter: Change every 3000 miles

() Water pump: See 2000 (change every 3000 miles)
Generator: See 2000 (change every 3000 miles)

() Oil filter: See 2000 (change every 3000 miles)
Air filter: See 2000 (change every 3000 miles)

TENT CAMP

- (O) Motor Elec: Use 3050 (Change every 3 Mo. Operator check daily & keep filled.
- (O) Pump Use type J Grease every 3 Mo.
- (O) Aux. Motor: Crank Case Use 3065 (change every 4 Mo.
 - " " Water pump use type J. (A turn on cup each time run.)
 - " " Generator, Bistributer, Governor, 3050 (few drops every 30 days.
- Oil filter (repacked each time drained.)
- (O) Aux. Motor: Check oil level each time operated.

TEXT CAMP

(6) Motor used: Use F200 (Change every 3 Mo. Check level weekly. Oil level checked.)

(7) Pump used: Use 4 Change every 3 Mo.

(8) Aux. Motor: Use 3000 (Change every 6 Mo.)

(9) Generator: Use 4. (A tank on top each time used.)
Generator: Use 4. (A tank on top each time used.)

every 30 days.

(10) Oil filter: Check oil level each time operated.
Oil filter: Check oil level each time operated.

Oiling, Greasing Schedule for Water
Treatment Equipment.

WELL PUMPS

- (O) Motor, Elec: Bearings, (oil filled use 3050)
" " " " (Grease " " Type J)
Check daily change (6) Mo., Grease Every 30 days.
- (O) Pump: Use 2110, Daily check by Pump oper. (feed 8 to 10 D.P.M.)
- (O) Gear Case: Use 3050 (Change 12 Mo.)
- (O) Aux. Motor: Use 3065 (Change 50 hrs. or 6 Mo.)
- (O) Universal Joint: Use Type J grease (Every 30 days)
- (O) Chlorinator Booster Pump & Motor or Porportineer Chlofeeder:
Bearings: (oil filled use 3050 oil few drops 30 days)
(grease " " type J Grease 30 days.
Gear Case: Use 3065 (Change 12 Mo.)

HIGH LIFT PUMPS.

- (M) Motor Elec: Use 3050 (Change 3 Mo. (Oper. check daily & keep filled)
- (M) Pump: Use type J grease (15 days) on 15th and 30th of each Mo.
- (M) Aux. Motor: Crank Case use 3065 (Change 4 Mo.)
" " Water Pump Use J (A turn on cup each time Oper.)
" " Generator, Distributer and Governor (use 3050 (Few
drops every 30 days.)
Aux. Motor: Oil filter (Repack each time drained)
- (O) " " Check oil level each time operated.

CARRIER CURRENT MOTOR

- (M) Motor Elec: Use 3050 (Change 3 Mo.)

CONDENSATE PUMP

- (M) Motor Elec: Use 3050 (change 3 Mo.) (Oper. keep cups filled)
- (M) Pump: Use type J (Grease once each week.)

EXHAUST FAN.

- (M) Motor Elec: Use 3050 (Few drops 30 days.)

WASH WATER PUMP.

- (M) Motor Elec: Use 3050 (Change 6 Mo)
- (M) Pump: Use 3050 (Change 6 Mo.)



(1) ...
 (2) ...
 (3) ...
 (4) ...
 (5) ...
 (6) ...
 (7) ...
 (8) ...
 (9) ...
 (10) ...

(11) ...
 (12) ...
 (13) ...
 (14) ...
 (15) ...
 (16) ...
 (17) ...
 (18) ...
 (19) ...
 (20) ...

(21) ...
 (22) ...
 (23) ...
 (24) ...
 (25) ...
 (26) ...
 (27) ...
 (28) ...
 (29) ...
 (30) ...

LAWN MOWERS.

- (M) Motor Gas: Use 3065 (Change weekly when in operation)(25 hrs oper)
Transmission, Clutch(use Type J grease 2 hrs. operation)
When mower is not in use (winter) change oil every 6 Mo.

AIR COMPRESSOR.

- (M) Motor Gas: Use 3065 (Change 6 Mo. when in oper. or 50 hrs oper)

CENTRIFUGAL PUMPS (PORTABLE)

- (M) Motor Gas: Use 3065 (Change 6 Mo. when in oper or 50 hrs. oper)

ELECTRIC FANS

- (M) Motor Elec: Use few drops 3050 every 2 Weeks.

HIGH LIFT STATION

- (M) Motor Gas: Use 3065 (Change 6 Mo.)
" " Generator, Starter, Distributer, Governor,(Use 3050
few drops every 30 days.)
- (M) Pump: Use 3050 (Change every 6 Mo.)
- (M) Motor Elec: Use 3050 (change 30 days.)
SUMP pump: Type J. every 30 days.

MIDWAY PARK BOOSTER PUMP.

- (M) Motor Elec: Use type J grease every 15 days.
- (M) Pump Use type J Grease every 15 days.

SWIMMING POOLS.

- (M) Circulation Pump.
Motor Elec: Use type J every 15 days.
- (M) Pump Use type J every 15 days.
- (M) Chemical Feed Pumps.
Motor Elec: Use 3050 (Few drops when used.)
" " Gear Case Use S.A.E. 140 (Change 6 Mo.
- (M) Pump Connecting rod & cross head.(use type J grease) (when used)
- (M) Exhaust-Fan:
Motor Elec: Use 3050 (few drops every 30 days.)

(1) (b) (i) The 1985-86 season was a record for the
State of California, with a record
crop of 100 million bushels of wheat.

(2) (b) (ii) The 1986-87 season was a record for the
State of California, with a record
crop of 100 million bushels of wheat.

(3) (b) (iii) The 1987-88 season was a record for the
State of California, with a record
crop of 100 million bushels of wheat.

(4) (b) (iv) The 1988-89 season was a record for the
State of California, with a record
crop of 100 million bushels of wheat.

(5) (b) (v) The 1989-90 season was a record for the
State of California, with a record
crop of 100 million bushels of wheat.

(6) (b) (vi) The 1990-91 season was a record for the
State of California, with a record
crop of 100 million bushels of wheat.

(7) (b) (vii) The 1991-92 season was a record for the
State of California, with a record
crop of 100 million bushels of wheat.

(8) (b) (viii) The 1992-93 season was a record for the
State of California, with a record
crop of 100 million bushels of wheat.

(9) (b) (ix) The 1993-94 season was a record for the
State of California, with a record
crop of 100 million bushels of wheat.

(10) (b) (x) The 1994-95 season was a record for the
State of California, with a record
crop of 100 million bushels of wheat.

Onslow Beach

Oiling, Greasing Schedule for Outlying
Stations Equipment.

WELL PUMPS

- (O) Motor Elec: Bearings, (oil filled use 3050)
" " " " (Grease " " Type J)
Check daily change 6 Mo., Grease every 30 days.
- (O) Pump: Use 2110, Daily check by pump operator(feed 8 to 10 D.P.M.)
- (O) Gear Case: Use 3050 (Change 12 Mo)
- (O) Aux. Motor: Use 3065 (Change 50 hrs. or 6 Mo.)
- (O) Universal Joint: Use type J grease (every 30 days)
- (O) Chlorinator Booster Pump & Motor Porportineer Chlofeeder:
Bearings: (Oil filled use 3050 oil few drops 30 days)
grease " " type J grease 30 days.
Gear Case: Use 3065 (change 12 Mo.)

ITEMS

- (1) Motor: [illegible]
- (2) [illegible]
- (3) [illegible]
- (4) [illegible]
- (5) [illegible]
- (6) [illegible]
- (7) [illegible]
- (8) [illegible]
- (9) [illegible]
- (10) [illegible]
- (11) [illegible]
- (12) [illegible]
- (13) [illegible]
- (14) [illegible]
- (15) [illegible]
- (16) [illegible]
- (17) [illegible]
- (18) [illegible]
- (19) [illegible]
- (20) [illegible]
- (21) [illegible]
- (22) [illegible]
- (23) [illegible]
- (24) [illegible]
- (25) [illegible]
- (26) [illegible]
- (27) [illegible]
- (28) [illegible]
- (29) [illegible]
- (30) [illegible]
- (31) [illegible]
- (32) [illegible]
- (33) [illegible]
- (34) [illegible]
- (35) [illegible]
- (36) [illegible]
- (37) [illegible]
- (38) [illegible]
- (39) [illegible]
- (40) [illegible]
- (41) [illegible]
- (42) [illegible]
- (43) [illegible]
- (44) [illegible]
- (45) [illegible]
- (46) [illegible]
- (47) [illegible]
- (48) [illegible]
- (49) [illegible]
- (50) [illegible]