

T 6286/4  
6286/1  
NREAD  
13 Nov 1985

From: Director, Natural Resources and Environmental Affairs  
Division, Marine Corps Base, Camp Lejeune  
To: Base Maintenance Officer, Marine Corps Base, Camp Lejeune  
(Attn: Utilities Director)

Subj: NATIONAL POLLUTANT DISCHARGE ELIMINATION SYSTEM (NPDES)  
PERMIT RELATED REPORTING DATA

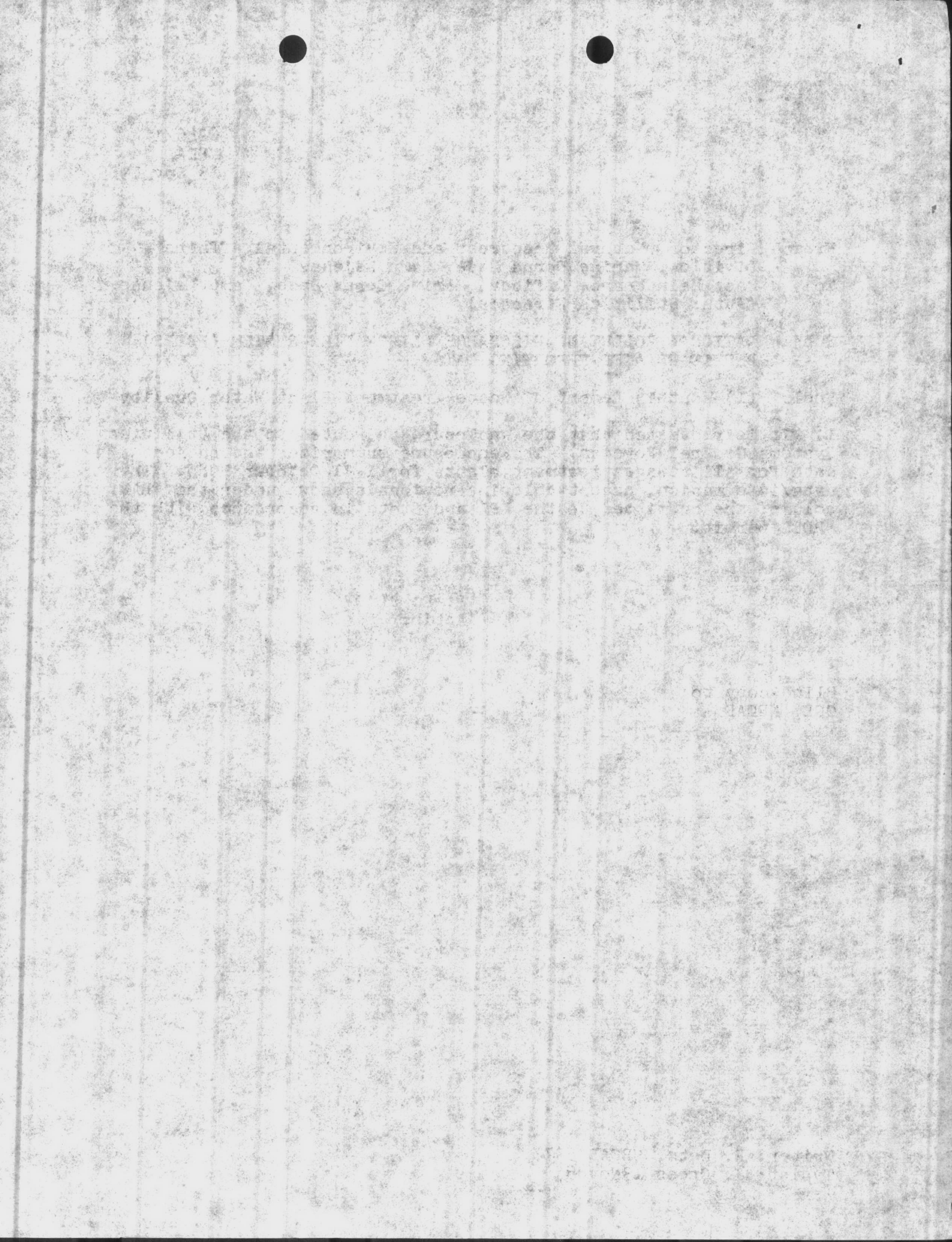
Encl: (1) Monthly Report of Waste Treatment Plant Water Quality

1. It is requested that the enclosure be routed to the Utilities Systems General Foreman. The enclosure summarizes the subject data for all sewage treatment plants for 1-31 October 1985. The data/information, except chlorine residuals shown under the "LAB" column, are submitted to the EPA and State in accordance with the NPDES permit.

P. E. BLACK  
Acting

Blind copy to:  
QCL, NREAD

Writer: E. Betz, NREAD 5977  
Typist: J. Cross 13Nov85





MONTHLY REPORT OF WASTE TREATMENT PLANT WATER QUALITY

MCBOL 11345/8 (REV. 6-83)

PLANT CAMP GEIGER

MONTH OCTOBER 1985

DATE	PLANT EFFLUENT DATA			5 DAY 20° C. BOD			SUSPENDED SOLIDS			COLIFORM	
	FLOW TOTAL DAILY GPD	PH	CHLORINE RESIDUAL PLANT mg/1    LAB mg/1	RAW mg/1	EFFLUENT mg/1	PERCENT REMOVAL	RAW mg/1	EFFLUENT mg/1	PERCENT REMOVAL	NUMBER PER 100 ml	GEOMETRIC MEAN
1	793,200	6.4	3.8    2.8	108	4	96	74	1	99	0	
2	864,800	6.6	4.0    3.8	144	4	97	126	6	95	0	
3	853,800	6.6	4.0    3.7	152	4	97	84	2	98	0	
4	1,242,600	7.2	4.0    3.5	88	6	93	80	5	94		
5	911,800	6.8	3.5								
6	882,800	6.8	4.0								
7	893,000	6.8	4.0								
8	815,400	7.0	4.0    3.0	136	8	94	130	6	95	0	
9	890,500	6.4	4.0    3.6	196	6	97	90	10	89	0	
10	792,000	6.8	4.0    4.5	136	11	92	110	10	91	0	
11	998,300	6.4	3.5		120	8	85	7	92		
12	908,700	6.8	4.0								
13	1,024,500	6.8	3.8								
14	912,100	6.8	3.4								
15	926,500	6.9	4.0    3.8	116	3	97	68	4	94	0	
16	974,900	6.6	4.0    3.2	104	3	97	60	1	98	0	
17	859,600	6.5	4.0    4.3	152	4	97	144	1	99	6	
18	909,700	6.8	4.0    4.1	120	10	92	72	8	89		
19	759,100	6.8	4.0								
20	915,400	6.8	4.0								
21	1,250,900	6.8	3.4								
22	970,900	6.5	3.8    4.4	140	5	96	206	10	95	0	
23	997,300	6.6	4.0    3.0	104	6	94	166	24	86	0	
24	1,016,800	6.8	4.0    4.2	140	8	94	122	8	93	0	
25	1,000,300	6.5	4.0    3.8	140	10	93	120	4	97		
26	911,000	6.6	4.0								
27	891,500	6.6	4.0								
28	921,300	6.6	4.0								
29	896,800	6.6	4.0    4.9	116	6	95	86	4	95	0	
30	1,139,500	6.5	4.0    4.9	136	6	96	98	3	97	50	
31	1,408,700	6.4	4.0    2.5	88	15	83	158	29	80	0	
Tot.	29,533,600			2436	127	94.4 <sup>1773</sup>	2079	146	93.5 <sup>1774</sup>	1.46	
Ave.	952,700			128	7.0	94.5	109	8.0	92.7		

DATE  
TIME

NO. OF  
SPLICED  
PLATES

NO. OF  
PLATES

NO. OF  
PLATES

NO. OF  
PLATES

NO. OF  
PLATES

NO. OF  
PLATES

NO. OF  
PLATES

NO. OF  
PLATES

NO. OF  
PLATES

NO. OF  
PLATES

NO. OF  
PLATES

NO. OF  
PLATES

NO. OF  
PLATES

NO. OF  
PLATES

NO. OF  
PLATES

NO. OF  
PLATES

NO. OF  
PLATES

NO. OF  
PLATES

NO. OF  
PLATES

NO. OF  
PLATES

NO. OF  
PLATES

NO. OF  
PLATES

NO. OF  
PLATES

NO. OF  
PLATES

NO. OF  
PLATES

NO. OF  
PLATES

NO. OF  
PLATES

NO. OF  
PLATES

NO. OF  
PLATES

NO. OF  
PLATES

NO. OF  
PLATES

NO. OF  
PLATES

NO. OF  
PLATES

NO. OF  
PLATES

NO. OF  
PLATES

NO. OF  
PLATES

NO. OF  
PLATES

NO. OF  
PLATES

NO. OF  
PLATES

NO. OF  
PLATES

NO. OF  
PLATES

NO. OF  
PLATES

NO. OF  
PLATES

NO. OF  
PLATES

NO. OF  
PLATES

NO. OF  
PLATES

NO. OF  
PLATES

NO. OF  
PLATES

NO. OF  
PLATES

NO. OF  
PLATES

NO. OF  
PLATES

NO. OF  
PLATES

NO. OF  
PLATES

NO. OF  
PLATES

NO. OF  
PLATES

NO. OF  
PLATES



MONTHLY REPORT OF WASTE TREATMENT PLANT WATER QUALITY

MCBCL 11345/8 (REV. 6-83)

PLANT **TARAWA TERRACE**

MONTH **OCTOBER 1985**

DATE	PLANT EFFLUENT DATA				5 DAY 20° C. BOD			SUSPENDED SOLIDS			COLIFORM	
	FLOW TOTAL DAILY GPD	PH	CHLORINE RESIDUAL		RAW mg/1	EFFLUENT mg/1	PERCENT REMOVAL	RAW mg/1	EFFLUENT mg/1	PERCENT REMOVAL	NUMBER PER 100 ml	GEOMETRIC MEAN
1	665,900	6.1	4.0	2.2	240	17	93	182	13	93	0	
2	636,900	6.5	4.0	3.1	188	14	93	104	11	89	0	
3	705,600	6.4	4.0	2.7	200	17	92	102	10	90	1,000	
4	899,700	6.2	3.0	1.4	132	15	89	236	12	95		
5	842,500	6.2	4.0									
6	780,200	6.3	4.0									
7	896,400	6.5	4.0									
8	979,100	6.3	4.0	2.5	156	15	90	170	12	93	0	
9	1,066,500	6.3	4.0	3.3	196	14	93	118	12	90	50	
10	992,600	6.8	4.0	2.6	156	13	92	140	13	91	6	
11	1,205,300	6.5	4.0	2.6	148	16	89	96	7	93		
12	1,051,900	6.5	4.0									
13	1,104,700	6.6	4.0									
14	1,107,200	6.6	4.0									
15	997,500	6.5	4.0	1.8	180	18	90	132	13	90	0	
16	998,600	6.6	4.0	2.5	252	17	93	350	9	97	4	
17	1,002,500	6.6	4.0	2.5	176	15	91	118	11	91	12	
18	1,984,000	6.6	4.0	3.3	124	17	86	130	15	88		
19	1,015,100	6.5	4.0									
20	1,084,100	6.5	4.0									
21	1,080,300	6.6	4.5									
22	919,300	6.5	4.5	3.6	172	16	91	170	15	91	4	
23	918,100	6.6	4.0	3.2	100	15	85	154	25	(84)	6	
24	928,100	6.3	4.0	3.5	172	20	88	90	12	87	2	
25	1,051,700	6.4	4.0	3.0	168	14	92	102	10	90		
26	927,100	6.4	5.0									
27	823,900	6.2	4.0									
28	910,300	6.3	4.0									
29	826,800	6.2	4.0	5.2	192	22	89	122	13	89	0	
30	1,060,800	6.5	4.0	3.2	144	18	88	146	10	93	4	
31	1,333,700	6.2	3.0	2.1	108	12	89	74	13	(82)	8	
Tot.	30,796,400				3204	305	90.2	2735	236	90.3	4.89	
Ave.	992,270				169	16.0	90.5	144	12.0	91.7		

993,432

... ..

... ..

... ..

... ..

... ..

... ..

... ..

... ..

... ..

... ..

... ..

... ..

... ..

... ..

... ..

... ..

... ..

... ..



MONTHLY REPORT OF WASTE TREATMENT PLANT WATER QUALITY  
 MCBCL 11345/8 (REV. 6-83)

PLANT **CAMP JOHNSON** MONTH **OCTOBER 1985**

DATE	PLANT EFFLUENT DATA				5 DAY 20° C. BOD			SUSPENDED SOLIDS			COLIFORM	
	FLOW TOTAL DAILY GPD	PH	CHLORINE RESIDUAL		RAW mg/1	EFFLUENT mg/1	PERCENT REMOVAL	RAW mg/1	EFFLUENT mg/1	PERCENT REMOVAL	NUMBER PER 100 ml	GEOMETRIC MEAN
1	346,100	6.5	5.0	2.7	44	6	86	16	6	63	0	
2	337,500	6.6	4.0	4.3	104	6	94	44	8	82	0	
3	360,600	6.4	2.5	1.2	156	5	97	174	4	98	0	
4	381,600	6.5	4.0	1.7	80	8	90	184	21	89		
5	372,400	6.4	4.0									
6	271,700	6.4	4.0									
7	326,500	6.4	5.0									
8	343,200	6.6	4.0	3.8	100	9	91	72	12	83	0	
9	344,400	6.5	4.0	3.9	116	5	96	56	11	80	0	
10	345,600	6.4	5.0	3.2	116	7	94	78	13	83	0	
11	342,100	6.4	5.0	3.1	96	10	90	146	12	92		
12	310,500	6.5	8.0									
13	356,600	6.4	8.0									
14	337,900	6.4	4.0									
15	339,700	6.6	4.0	3.0	60	5	92	78	6	92	0	
16	320,300	6.6	5.0	4.2	104	5	95	94	2	98	0	
17	320,000	6.6	5.0	4.3	160	7	96	48	2	96	0	
18	449,700	6.5	4.0	3.3	108	7	94	40	4	90		
19	248,400	6.5	8.0									
20	338,500	6.5	6.0									
21	331,400	6.6	5.0									
22	354,300	6.6	5.0	4.4	72	9	88	90	10	89	0	
23	344,000	6.6	5.0	3.2	156	9	94	156	24	84	0	
24	393,000	6.6	6.0	3.5	148	8	95	100	6	94	0	
25	341,600	6.6	5.0	3.0	68	7	90	36	5	86		
26	324,100	6.6	4.0									
27	314,400	6.6	4.0									
28	330,600	6.7	4.0									
29	340,000	6.5	6.0	5.5	144	10	93	54	5	91	0	
30	536,600	6.6	5.0	6.1	84	8	91	84	5	94	0	
31	542,200	6.7	4.0	2.5	100	9	91	94	11	88	0	
Tot.	10,945,500				2016	140	92.5 <sup>175%</sup>	1644	167	88.0 <sup>167%</sup>	0.0	
Ave.	353,080				106	7.0	93.4	87	9.0	89.7		

1900  
1901  
1902  
1903  
1904  
1905  
1906  
1907  
1908  
1909  
1910  
1911  
1912  
1913  
1914  
1915  
1916  
1917  
1918  
1919  
1920  
1921  
1922  
1923  
1924  
1925  
1926  
1927  
1928  
1929  
1930  
1931  
1932  
1933  
1934  
1935  
1936  
1937  
1938  
1939  
1940  
1941  
1942  
1943  
1944  
1945  
1946  
1947  
1948  
1949  
1950  
1951  
1952  
1953  
1954  
1955  
1956  
1957  
1958  
1959  
1960  
1961  
1962  
1963  
1964  
1965  
1966  
1967  
1968  
1969  
1970  
1971  
1972  
1973  
1974  
1975  
1976  
1977  
1978  
1979  
1980  
1981  
1982  
1983  
1984  
1985  
1986  
1987  
1988  
1989  
1990  
1991  
1992  
1993  
1994  
1995  
1996  
1997  
1998  
1999  
2000



MONTHLY REPORT OF WASTE TREATMENT PLANT WATER QUALITY  
 MCBCL 11345/8 (REV. 6-83)

PLANT HADNOT POINT

MONTH OCTOBER 1985

DATE	PLANT EFFLUENT DATA				5 DAY 20° C. BOD			SUSPENDED SOLIDS			COLIFORM	
	FLOW TOTAL DAILY GPD	PH	CHLORINE RESIDUAL		RAW mg/1	EFFLUENT mg/1	PERCENT REMOVAL	RAW mg/1	EFFLUENT mg/1	PERCENT REMOVAL	NUMBER PER 100 ml	GEOMETRIC MEAN
			PLANT mg/1	LAB mg/1								
1	5,847,000	6.5	3.5	2.4	116	11	91	88	7	92	8	
2	5,809,000	6.8	3.4	2.6	116	12	90	92	10	89	2	
3	5,611,000	6.6	3.8	2.2	124	12	90	96	7	93	40	
4	5,877,000	6.7	2.8	1.8	116	14	88	116	10	91		
5	4,521,000	6.6	3.4									
6	4,323,000	6.6	3.5		128	12	91	60	4	93		
7	4,439,000	6.7	4.0									
8	4,174,000	6.7	4.0	2.8	124	15	88	128	11	91	0	
9	4,184,000	6.7	4.1	2.8	148	16	89	128	13	90	4	
10	4,417,000	6.7	4.0	3.2	152	17	89	140	13	91	28	
11	4,675,000	6.4	3.7	3.1	160	18	89	156	9	94		
12	3,935,000	6.6	4.0									
13	3,985,000	6.6	4.0		64	8	88	60	5	92		
14	4,180,000	6.3	4.0									
15	4,252,000	6.8	4.0	3.0	92	10	89	102	8	92	0	
16	4,538,000	6.6	4.0	3.0	128	15	88	108	6	94	0	
17	4,749,000	6.8	4.0	3.0	104	12	88	90	5	94	4	
18	3,934,000	6.8	4.0	2.8	116	12	90	98	8	92		
19	4,111,000	6.8	4.0									
20	5,326,000	6.6	4.0	2.6	128	12	91	96	10	90		
21	4,745,000	6.6	4.0									
22	4,610,000	6.6	4.0	3.9	136	12	91	126	12	90	10	
23	4,601,000	6.8	4.0	3.2	100	15	85	154	25	(84)	6	
24	4,694,000	6.6	4.0	3.5	156	17	89	96	10	90	4	
25	4,864,000	6.7	3.9	3.6	104	15	86	80	11	86		
26	4,113,000	6.8	4.0									
27	4,643,000	6.7	4.0	3.2	60	11	(82)	46	6	87		
28	4,827,000	6.8	4.0									
29	4,931,000	6.7	4.0	3.7	132	17	87	94	10	89	10	
30	6,154,000	6.7	4.0	3.8	120	19	(84)	106	11	90	8	
31	5,488,000	6.6	4.0	3.7	188	18	90	208	14	93	0	
Tot.	146,557,000				2812	320	88.4 <sup>2033</sup>	2468	225	90.7 <sup>2087</sup>	4.46	
Ave.	4,727,645				122	14.0	88.5	107	10.0	90.7		

1955-1956

...

...

...

...

...

...

...

...

...

...

...

...

...



MONTHLY REPORT OF WASTE TREATMENT PLANT WATER QUALITY  
 MCBCL 11345/8 (REV. 6-83)

PLANT RIFLE RANGE MONTH OCTOBER 1985

DATE	PLANT EFFLUENT DATA				5 DAY 20° C. BOD			SUSPENDED SOLIDS			COLIFORM	
	FLOW TOTAL DAILY GPD	PH	CHLORINE RESIDUAL		RAW mg/1	EFFLUENT mg/1	PERCENT REMOVAL	RAW mg/1	EFFLUENT mg/1	PERCENT REMOVAL	NUMBER PER 100 ml	GEOMETRIC MEAN
1	499,210	6.6	4.4	3.2	28	3	89	20	1	95	0	
2	306,540	6.6	5.6									
3	294,000	6.4	5.3	3.0	28	4	86	76	1	99	6	
4	393,660	6.4	4.0									
5	320,020	6.4	4.7									
6	293,220	6.4	4.9									
7	301,530	6.4	4.0									
8	257,640	6.5	4.6	0.5	40	6	85	176	7	96	0	
9	252,300	6.6	4.9									
10	227,960	6.4	4.5	4.3	84	7	92	210	8	96	0	
11	220,960	6.6	5.1									
12	227,350	6.6	5.0									
13	223,130	6.5	3.6									
14	391,300	6.7	3.0									
15	263,180	6.4	5.4	5.0	20	2	90	146	7	95	0	
16	249,310	6.6	5.5									
17	248,980	6.4	4.9	6.6	16	2	88	24	1	96	0	
18	254,070	6.4	5.5									
19	229,950	6.4	6.0									
20	271,240	6.4	4.0									
21	183,180	6.4	4.0									
22	285,620	6.4	4.8	3.7	48	8	83	170	8	95	6	
23	277,440	6.5	3.9									
24	255,440	6.4	4.1	3.1	36	3	92	144	2	99	0	
25	242,250	6.7	6.4									
26	240,860	6.8	5.0									
27	221,890	6.6	6.1									
28	256,940	6.4	4.4									
29	270,400	6.4	4.3	2.0	56	6	89	188	4	98	0	
30	455,100	6.3	4.7									
31	399,170	6.6	3.6	2.2	24	5	79	148	5	97	0	
Tot.	8,813,840				380	46	87.3	1302	44	96.6	1.43	
Ave.	284,317				38	5.0	86.8	130	4.0	96.9		



PLANT

COURTHOUSE BAY

MONTH OCTOBER 1985

DATE	PLANT EFFLUENT DATA				5 DAY 20° C. BOD			SUSPENDED SOLIDS			COLIFORM	
	FLOW TOTAL DAILY GPD	PH	CHLORINE RESIDUAL		RAW mg/1	EFFLUENT mg/1	PERCENT REMOVAL	RAW mg/1	EFFLUENT mg/1	PERCENT REMOVAL	NUMBER PER 100 ml	GEOMETRIC MEAN
1	360,070	6.7	2.1	0.6	140	6	96	187	3	98	0	
2	378,220	6.4	3.8									
3	368,810	6.5	4.2	1.8	40	10	75	37	9	76	2	
4	382,380	6.8	2.9									
5	347,420	6.6	1.3									
6	359,600	6.8	3.9									
7	380,000	7.0	3.8									
8	347,700	7.0	3.3	2.3	172	9	95	160	21	87	0	
9	422,100	7.0	3.9									
10	397,190	6.8	3.5	2.0	128	11	91	228	20	91	2	
11	365,710	6.6	4.5									
12	351,150	6.4	4.5									
13	421,840	6.8	4.5									
14	375,510	6.6	2.9									
15	385,500	6.6	3.3	2.3	148	3	98	144	7	95	0	
16	312,450	6.6	3.4									
17	320,450	6.7	3.1	1.6	88	4	95	64	4	94	4	
18	364,200	6.8	2.9									
19	377,650	6.8	2.8									
20	389,250	6.6	3.1									
21	407,850	6.7	3.7									
22	408,220	6.8	3.8	2.0	140	8	94	102	14	86	0	
23	374,570	6.7	3.9									
24	374,160	6.8	5.1	3.8	84	5	94	64	8	88	0	
25	287,050	6.6	4.7									
26	439,750	6.7	2.5									
27	370,400	6.8	2.8									
28	362,200	6.7	2.6									
29	358,100	6.8	3.0	1.9	140	8	94	108	6	94	8,000	
30	485,600	6.8	3.9									
31	555,180	6.8	2.3	1.8	128	6	95	290	4	99	80	
Tot.	11,830,280				1208	70	92.7 <sup>927</sup>	1384	96	90.8 <sup>908</sup>	5.02	
Ave.	381,621				121	7.0	94.2	138	10.0	92.5		



1941  
1942  
1943  
1944  
1945  
1946  
1947  
1948  
1949  
1950  
1951  
1952  
1953  
1954  
1955  
1956  
1957  
1958  
1959  
1960  
1961  
1962  
1963  
1964  
1965  
1966  
1967  
1968  
1969  
1970  
1971  
1972  
1973  
1974  
1975  
1976  
1977  
1978  
1979  
1980  
1981  
1982  
1983  
1984  
1985  
1986  
1987  
1988  
1989  
1990  
1991  
1992  
1993  
1994  
1995  
1996  
1997  
1998  
1999  
2000  
2001  
2002  
2003  
2004  
2005  
2006  
2007  
2008  
2009  
2010  
2011  
2012  
2013  
2014  
2015  
2016  
2017  
2018  
2019  
2020  
2021  
2022  
2023  
2024  
2025

MONTHLY REPORT OF WASTE TREATMENT PLANT WATER QUALITY  
 MCBCL 11345/8 (REV. 6-83)

PLANT: **ONSLow BEACH**

MONTH: **OCTOBER 1985**

DATE	PLANT EFFLUENT DATA				5 DAY 20° C. BOD			SUSPENDED SOLIDS			COLIFORM	
	FLOW TOTAL DAILY GPD	PH	CHLORINE RESIDUAL		RAW mg/1	EFFLUENT mg/1	PERCENT REMOVAL	RAW mg/1	EFFLUENT mg/1	PERCENT REMOVAL	NUMBER PER 100 ml	GEOMETRIC MEAN
			PLANT mg/1	LAB mg/1								
1	110,000	6.3	4.5	3.2	76	11	86	74	5	93	0	
2	109,000	6.5	4.0									
3	92,000	6.6	4.0	7.7	84	6	93	68	2	97	50	
4	86,000	6.6	5.0									
5	99,000	6.6	4.0									
6	95,000	6.6	3.5									
7	110,000	6.6	4.0									
8	125,000	6.1	4.0	5.2	168	8	95	56	5	91	22	
9	127,000	6.4	3.0									
10	129,000	6.3	4.5	4.1	80	7	91	54	7	87	4	
11	124,000	6.5	5.0									
12	136,000	6.5	4.0									
13	130,000	6.5	4.0									
14	90,000	6.5	4.0									
15	97,000	6.3	2.5	3.1	60	4	93	56	4	93	0	
16	95,000	6.4	3.5									
17	110,000	6.4	3.5	2.0	128	6	95	18	1	94	0	
18	120,000	6.3	3.5									
19	134,000	6.2	5.0									
20	129,000	6.2	4.0									
21	110,000	6.2	4.0									
22	120,000	6.3	4.0	3.8	168	9	95	86	8	91	14	
23	135,000	6.4	4.0									
24	120,000	6.3	4.0	4.7	212	18	92	66	6	91	2	
25	102,000	6.3	4.0									
26	85,000	6.5	5.0									
27	97,000	6.4	4.0									
28	100,000	6.4	4.0									
29	102,000	6.4	5.0	1.4	136	9	93	38	4	89	2	
30	150,000	6.3	4.0									
31	162,000	6.1	3.0	3.0	24	6	(75)	23	7	(70)	140	
Tot.	3,530,000				1136	84	90.8 <sup>90%</sup>	539	49	89.6 <sup>89%</sup>	5.54	
Ave.	113,870				114	8.0	93.0	54	5.0	90.7		

Year	1940	1941	1942	1943	1944	1945	1946	1947	1948
...	...	...	...	...	...	...	...	...	...
...	...	...	...	...	...	...	...	...	...
...	...	...	...	...	...	...	...	...	...

