

6280
NREAD
25 Jun 86

From: Director, Natural Resources and Environmental Affairs
Division, Marine Corps Base, Camp Lejeune
To: Base Maintenance Officer, Marine Corps Base, Camp Lejeune
(Attn: Utilities Director)

Subj: NATIONAL POLLUTANT DISCHARGE ELIMINATION SYSTEM (NPDES)
PERMIT RELATED REPORTING DATA

Encl: (1) Monthly Report of Waste Treatment Plant Water Quality

1. It is requested that the enclosure be routed to the Utilities Systems General Foreman. The enclosure summarizes the subject data for all sewage treatment plants for 1-31 May 1986. The data/information except chlorine residuals shown under the "LAB" column are submitted to the EPA and state in accordance with the NREAD permit.

J. I. WOOTEN

Director, Bureau of Investigation
Washington, D. C.

MEMORANDUM FOR THE DIRECTOR

Subject: [Illegible]

1

MONTHLY REPORT OF WASTE TREATMENT PLANT WATER QUALITY

TCBCL 11345/8 (REV. 6-83)

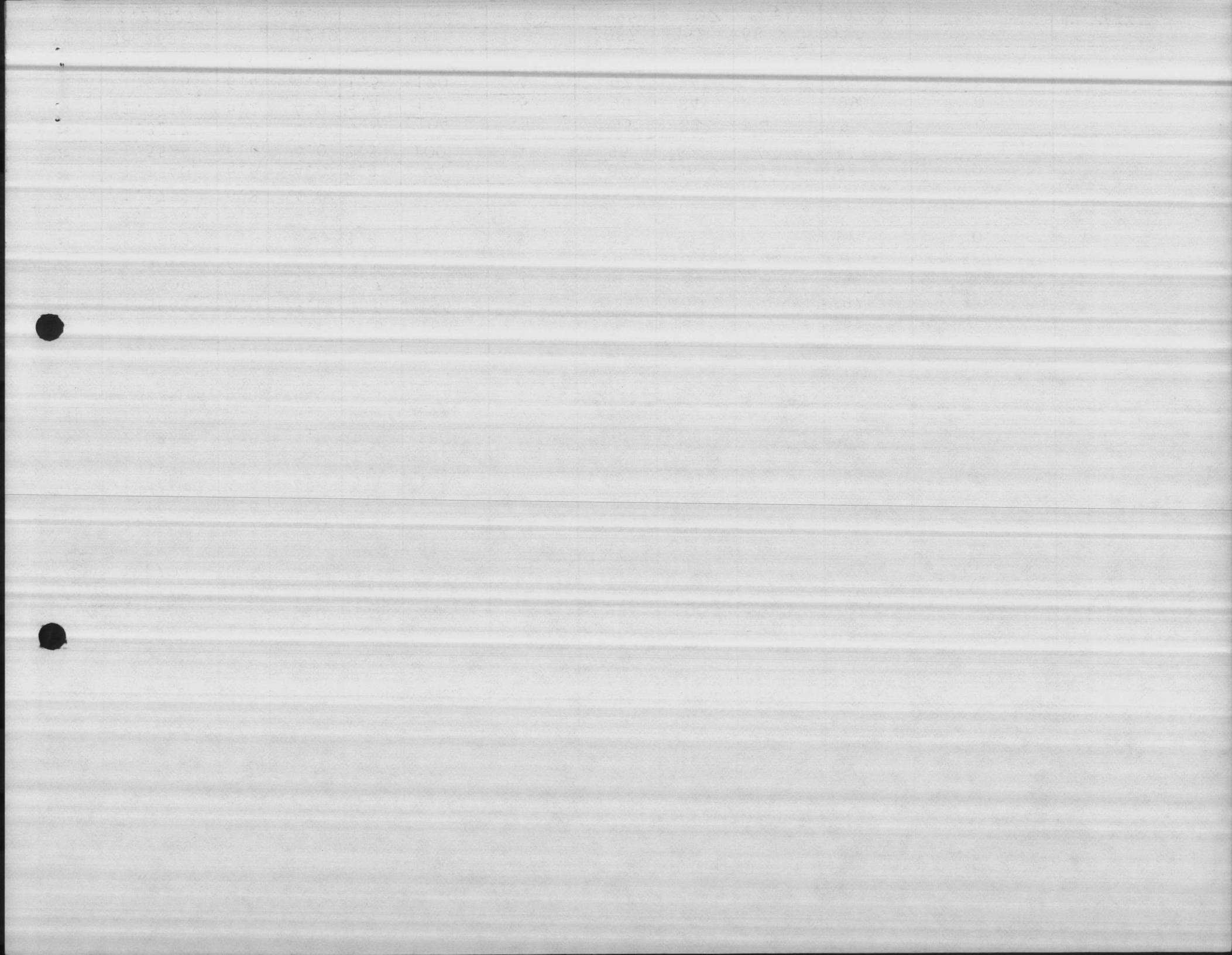
PLANT

CAMP GEIGER

MONTH

MAY 1986

DATE	PLANT EFFLUENT DATA				5 DAY 20° C. BOD			SUSPENDED SOLIDS			COLIFORM	
	FLOW TOTAL DAILY GPD	PH	CHLORINE RESIDUAL		RAW mg/1	EFFLUENT mg/1	PERCENT REMOVAL	RAW mg/1	EFFLUENT mg/1	PERCENT REMOVAL	NUMBER PER 100 ml	GEOMETRIC MEAN
			PLANT mg/1	LAB mg/1								
1	1.2510	6.4	4.0	2.6	156	8	95	114	4	96	0	
2	1.2368	6.4	4.0	2.2	236	6	97	180	1	99	0	
3	1.1204	6.4	4.0									
4	1.1405	6.4	4.0									
5	1.2142	6.7	4.0	2.6	152	6	96	110	1	99	0	
6	1.2369	6.6	4.0	1.5	148	3	98	100	3	97	10	
7	1.3478	6.4	4.0	2.2	116	5	96	76	2	97	0	
8	1.2704	6.6	4.0	2.3	104	3	97	114	6	95	0	
9	1.2239	6.6	4.0	2.2	144	7	90	78	2	97	2	
10	1.1818	6.7	4.0									
11	1.1497	6.6	4.0									
12	1.2645	6.6	4.0	3.1	136	5	96	102	2	98	0	
13	1.2736	7.2	4.0	1.8	112	6	95	76	2	97	0	
14	1.0978	6.6	4.0	3.0	180	7	96	108	3	97	0	
15	1.2001	6.6	4.0	4.0	184	7	96	122	4	97	0	
16	1.2260	6.4	4.0	2.1	276	8	97	263	6	98	0	
17	1.0504	6.4	4.0									
18	1.1542	6.4	4.0									
19	1.5643	7.0	5.0	2.6	160	6	96	148	5	97	0	
20	1.5643	7.0	3.0	2.6	156	8	95	150	4	97	0	
21	1.3809	6.4	4.0	2.7	124	8	94	84	3	96	0	
22	1.3014	6.8	4.0	3.9	80	10	88	102	4	96	0	
23	1.1965	6.8	4.0	3.6	172	8	95	92	3	97	0	
24	1.1358	6.8	4.0									
25	1.1752	6.8	4.0									
26	1.1340	6.6	4.0	4.3	44	6	86	36	3	92	0	
27	1.5526	6.6	4.0	2.5	100	4	96	62	4	94	0	
28	1.3277	6.6	4.0	2.5	104	5	95	82	4	95	0	
29	1.2714	6.2	4.0	3.4	112	5	96	84	1	99	0	
30	1.2216	6.4	4.0	1.5	120	4	97	74	1	99	0	
31	1.2047	6.4	4.0									
Tot.	38.2625		1240		3116	135	2087	2357	68	2129		
Ave.	1.23427		4.0		142	6	95	107	3	97		1.15*



MONTHLY REPORT OF WASTE TREATMENT PLANT WATER QUALITY
 MCBCL 11345/8 (REV. 6-83)

PLANT

TARAWA TERRACE

MONTH

MAY 1986

DATE	PLANT EFFLUENT DATA				5 DAY 20° C. BOD			SUSPENDED SOLIDS			COLIFORM	
	FLOW TOTAL DAILY GPD	PH	CHLORINE RESIDUAL		RAW mg/1	EFFLUENT mg/1	PERCENT REMOVAL	RAW mg/1	EFFLUENT mg/1	PERCENT REMOVAL	NUMBER PER 100 ml	GEOMETRIC MEAN
			PLANT mg/1	LAB mg/1								
1	.94440	6.8	4.0	2.9	152	21	86	216	8	96	0	
2	.93000	6.6	4.0	2.7	256	21	92	405	8	98	0	
3	.87050	6.8	4.0									
4	.81660	7.0	4.0									
5	.86970	6.6	5.0	3.5	144	18	88	292	5	98	12	
6	.96150	6.9	5.0	2.6	208	16	92	365	8	98	0	
7	.93200	6.9	4.0	3.5	192	19	90	284	7	98	2	
8	.91440	7.6	4.0	2.6	124	10	92	80	8	90	0	
9	.87560	7.0	4.0	4.1	204	22	89	88	9	90	2	
10	.84450	6.9	4.0									
11	.99180	6.9	4.0									
12	1.00530	7.2	3.0	3.2	216	16	93	256	10	96	0	
13	.93330	7.2	4.0	3.2	176	18	90	224	8	96	0	
14	1.04370	7.0	4.0	2.8	196	19	90	940	13	99	0	
15	.94470	6.8	4.0	3.5	176	16	91	100	7	93	0	
16	.97740	7.0	3.0	2.8	148	15	90	263	8	97	2	
17	1.04090	6.8	4.0									
18	1.03430	7.1	4.0									
19	1.03500	7.0	4.0	3.0	196	18	91	132	9	93	2	
20	1.19550	7.0	4.0	3.0	180	16	91	208	9	96	8	
21	1.03060	7.0	4.0	3.1	192	15	92	139	8	94	18	
22	.95410	6.9	5.0	2.8	232	14	94	160	8	95	6	
23	.95850	6.8	4.0	3.0	200	19	91	220	10	95	4	
24	1.05210	6.8	4.0									
25	1.11220	6.9	3.0									
26	1.02670	6.9	4.0	2.7	112	17	85	218	11	95	2	
27	1.06790	6.9	5.0	2.6	176	22	88	194	10	95	0	
28	1.03730	6.9	4.0	3.0	160	15	91	94	9	90	0	
29	.99690	6.7	4.0	3.2	172	15	91	248	4	98	8	
30	.97590	6.8	4.0	2.2	160	17	89	250	5	98	0	
31	1.15480	6.8	4.0									
Tot.	30.5281		12.50		3972	379	1986	5376	182	2098		
Ave.	.984777		4.0		181	17	90	244	9	95		2.09



MONTHLY REPORT OF WASTE TREATMENT PLANT WATER QUALITY

MCBCL 11345/8 (REV. 6-83)

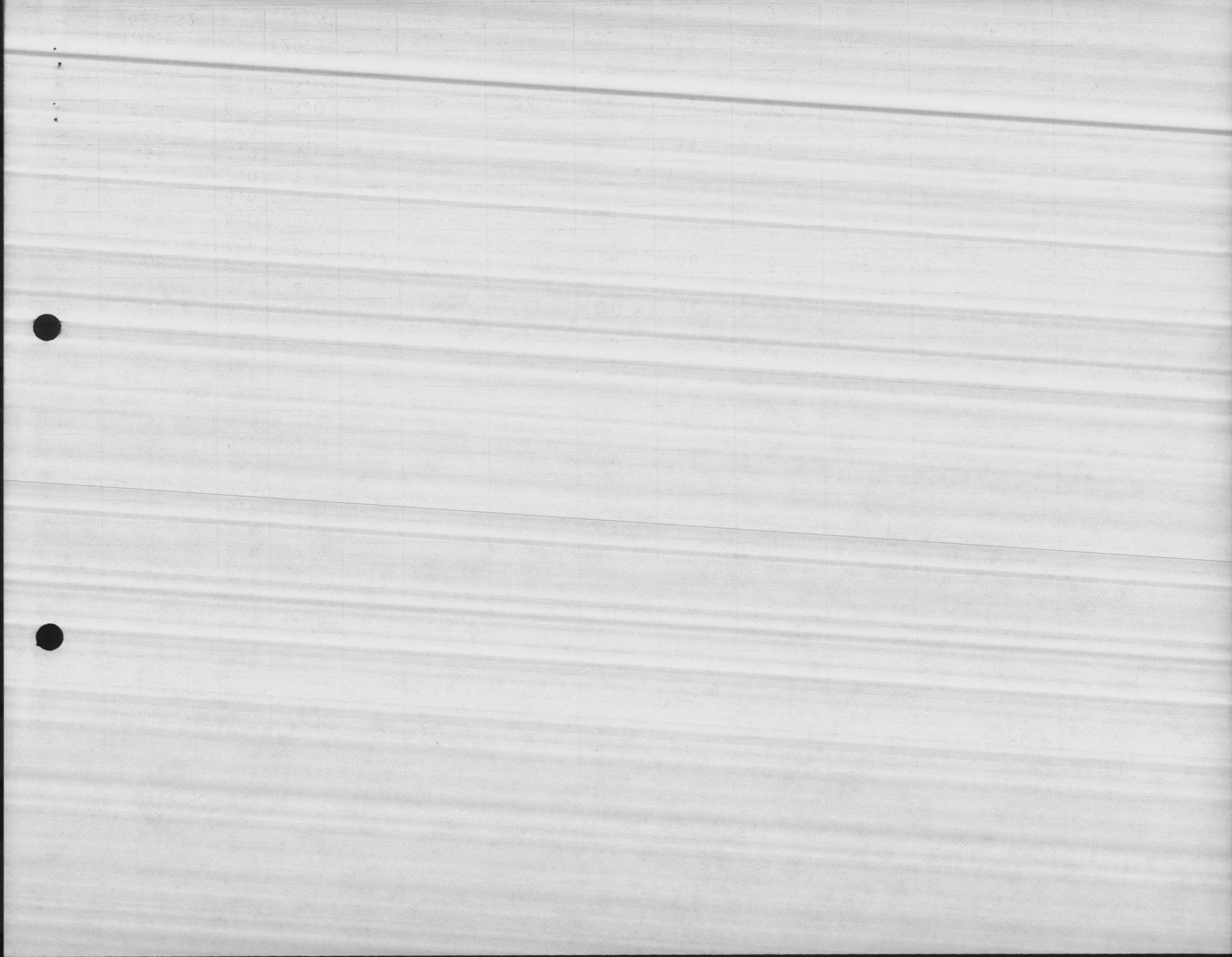
PLANT

CAMP JOHNSON

MONTH

MAY 1986

DATE	PLANT EFFLUENT DATA				5 DAY 20° C. BOD			SUSPENDED SOLIDS			COLIFORM	
	FLOW TOTAL DAILY GPD	PH	CHLORINE RESIDUAL		RAW mg/1	EFFLUENT mg/1	PERCENT REMOVAL	RAW mg/1	EFFLUENT mg/1	PERCENT REMOVAL	NUMBER PER 100 ml	GEOMETRIC MEAN
1	.402	6.4	4.0	1.9	156	13	92	64	8	88	0	
2	.350	6.8	6.0									
3	.325	7.2	6.0									
4	.365	6.7	5.0									
5	.412	6.7	4.0									
6	.378	6.6	4.0	1.0	140	12	91	94	11	88	0	
7	.379	6.6	4.0									
8	.401	6.5	5.0	4.1	152	10	93	196	8	96	2	
9	.318	6.5	2.0									
10	.372	6.4	5.0									
11	.422	6.7	5.0									
12	.419	7.0	4.0									
13	.362	7.0	3.0	1.5	184	11	94	62	6	90	0	
14	.331	6.7	3.0									
15	.397	6.8	4.0	3.0	280	13	95	90	10	89	0	
16	.445	6.9	4.0									
17	.433	6.5	6.0									
18	.467	6.7	5.0									
19	.499	6.4	6.0									
20	.525	6.7	4.0	4.1	80	23	(71)	54	18	(67)	0	
21	.479	6.7	4.0									
22	.508	6.6	3.0	1.7	80	10	88	46	7	85	0	
23	.443	6.6	4.0									
24	.428	6.0	5.0									
25	.631	6.6	4.0									
26	.472	7.0	3.0									
27	.455	6.9	3.0	4.1	76	8	87	38	1	97	0	
28	.445	6.8	2.0									
29	.424	6.5	6.0	3.9	96	28	(71)	54	8	85	0	
30	.416	6.6	3.0									
31	.352	6.7	3.5									
Tot.	13.065		129.5		1244	128	782	698	77	785		
Ave.	.421452		4.0		138	14	87	78	9	87		1.08



MONTHLY REPORT OF WASTE TREATMENT PLANT WATER QUALITY

MCBCL 11345/8 (REV. 6-83)

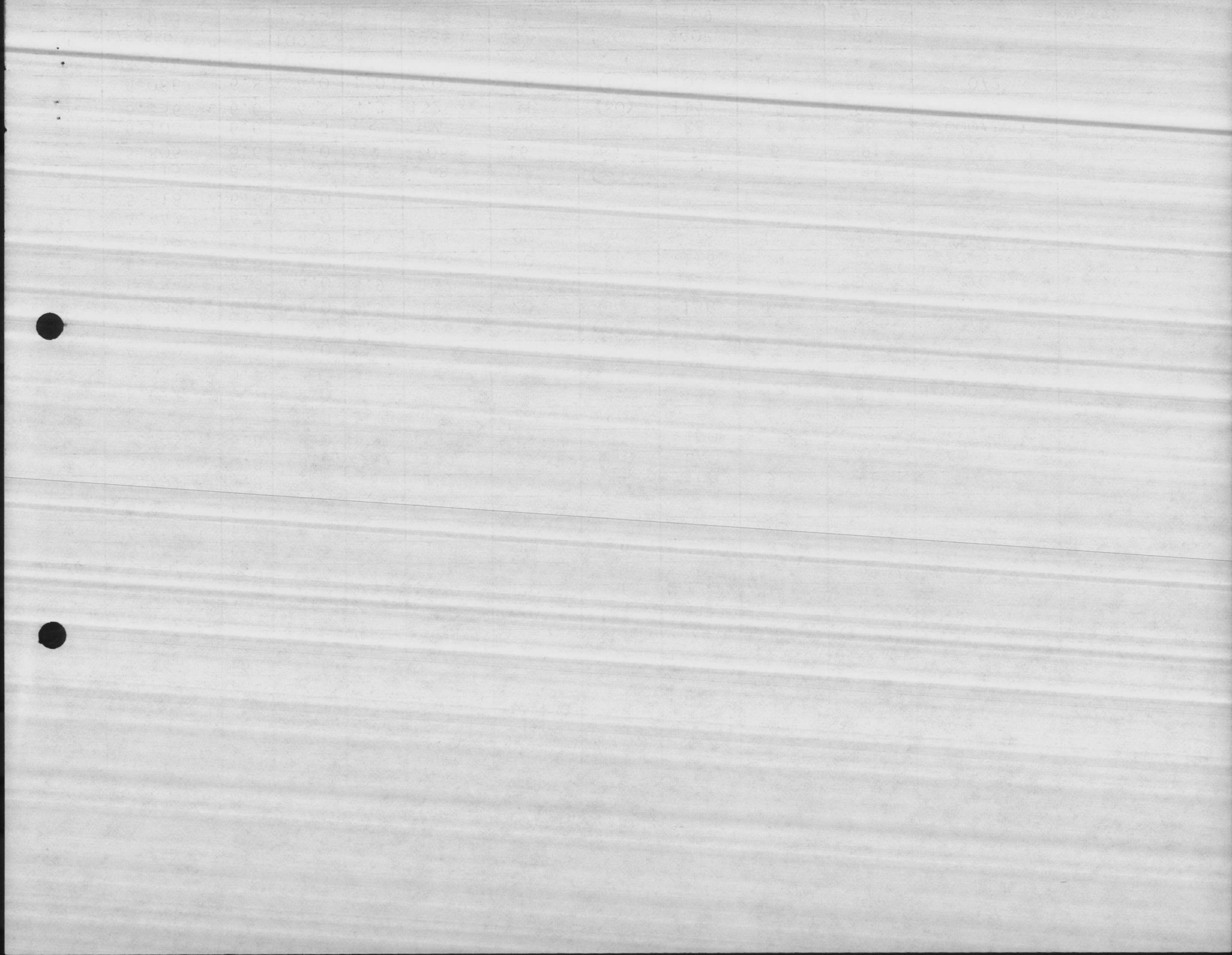
PLANT

HADNOT POINT

MONTH

MAY 1986

DATE	PLANT EFFLUENT DATA				5 DAY 20° C. BOD			SUSPENDED SOLIDS			COLIFORM	
	FLOW TOTAL DAILY GPD	PH	CHLORINE RESIDUAL		RAW mg/1	EFFLUENT mg/1	PERCENT REMOVAL	RAW mg/1	EFFLUENT mg/1	PERCENT REMOVAL	NUMBER PER 100 ml	GEOMETRIC MEAN
1	4.591	6.9	3.0	2.2	132	19	86	132	12	91	1000/6	
2	5.605	6.8	2.5	1.2	184	20	89	250	10	96	22/0	
3	5.047	6.9	2.0									
4	5.167	6.8	4.0									
5	6.067	6.8	4.0	3.0	164	21	87	74	3	96	10/0	
6	6.133	6.8	4.5	1.5	132	20	86	80	8	90	2/0	
7	6.098	6.8	4.0	2.5	140	20	86	132	6	95	0/0	
8	6.217	6.9	2.5	3.3	124	15	88	108	9	92	20/0	
9	5.889	6.8	2.5	2.6	168	19	89	110	8	93	2/2	
10	4.895	6.8	4.0									
11	5.060	6.8	3.5									
12	5.791	6.8	3.5	2.8	132	23	83	100	9	91	10/0	
13	5.787	6.8	4.0	2.1	112	22	80	96	12	88	40/0	
14	5.743	6.8	2.0	2.2	132	17	87	100	9	91	0/0	
15	5.780	6.7	2.0	2.2	144	20	86	92	11	88	0	
16	5.672	6.7	2.0	1.4	180	21	88	138	13	91	10000/3000	
17	4.893	6.9	3.5									
18	4.940	6.6	4.0									
19	6.034	6.8	3.0	4.2	124	21	84	138	8	94	2/0	
20	7.231	6.6	4.0	4.5	124	20	84	136	13	90	6/0	
21	6.236	6.5	4.0	4.9	132	17	87	93	7	92	14/0	
22	6.331	6.6	4.0	4.8	148	20	86	116	9	92	120/0	
23	5.528	6.5	4.0	4.5	140	20	86	78	12	85	6/0	
24	4.942	6.7	4.0									
25	5.518	6.6	4.0									
26	5.115	6.7	4.0	3.8	68	18	74	54	8	85	2/0	
27	5.805	6.6	4.0	3.7	108	16	85	70	6	91	0/0	
28	6.108	6.6	4.5	3.5	104	16	85	88	11	88	2000/180	
29	6.356	6.6	4.5	4.3	152	31	80	114	9	92	0/0	
30	6.086	6.8	4.0	1.0	140	36	74	108	14	87	0/2	
31	5.194	6.8	4.0									
Tot.	175.859		109.5		2984	452	1860	2407		1998		
Ave.	5.673		3.5		136	21	85	109	9	91		10.57*



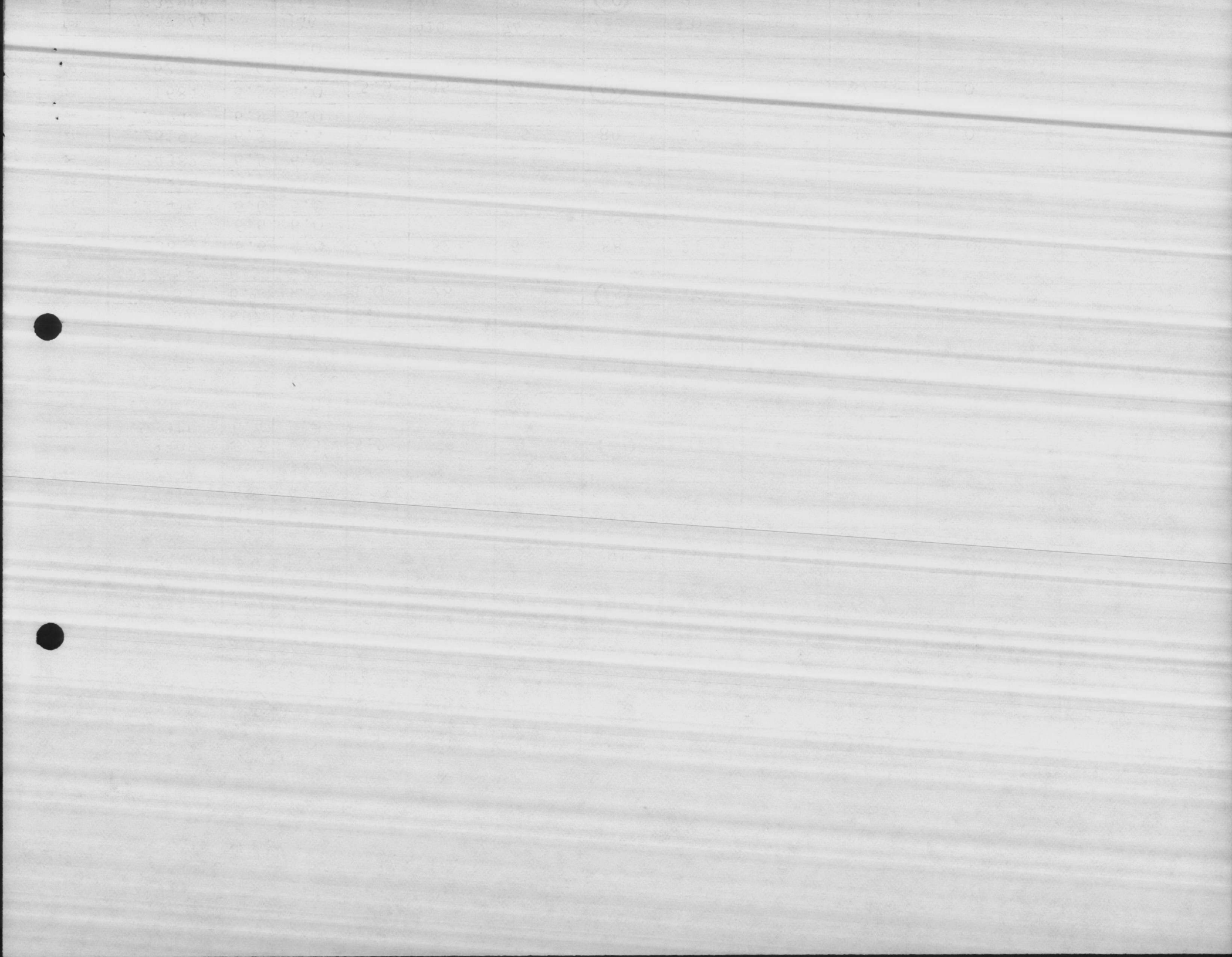
MONTHLY REPORT OF WASTE TREATMENT PLANT WATER QUALITY

MCBCL 11345/8 (REV. 6-83)

PLANT RIFLE RANGE

MONTH MAY 1986

DATE	PLANT EFFLUENT DATA				5 DAY 20° C. BOD			SUSPENDED SOLIDS			COLIFORM	
	FLOW TOTAL DAILY GPD	PH	CHLORINE RESIDUAL PLANT mg/1 LAB mg/1		RAW mg/1	EFFLUENT mg/1	PERCENT REMOVAL	RAW mg/1	EFFLUENT mg/1	PERCENT REMOVAL	NUMBER PER 100 ml	GEOMETRIC MEAN
1	.24014	6.5	4.3	1.8	40	10	75	28	2	93	0	
2	.21226	6.7	4.3									
3	.26263	6.4	5.0									
4	.06192	6.5	6.0									
5	.26234	6.7	3.5									
6	.27385	6.7	4.0	1.8	52	6	88	23	4	83	10	
7	.24189	6.5	2.0									
8	.21564	6.5	4.5	1.2	56	5	91	29	3	90	0	
9	.25265	6.5	4.0									
10	.26315	6.6	4.0									
11	.13917	6.5	4.0									
12	.22606	6.5	5.0									
13	.23808	6.5	6.5	5.2	52	9	83	110	4	96	0	
14	.23316	6.4	5.0									
15	.23042	6.9	7.0	1.0	56	6	89	41	7	83	0	
16	.21431	6.5	5.0									
17	.21306	6.5	5.0									
18	.21871	6.5	7.0									
19	.23057	6.7	3.5									
20	.25586	6.5	3.5	3.0	28	7	75	16	5	69	0	
21	.23657	6.5	4.0									
22	.23862	6.6	4.0	2.4	52	6	88	21	3	86	0	
23	.43754	6.6	6.0									
24	.21414	6.6	5.0									
25	.21845	6.7	6.0									
26	.24382	6.5	6.0									
27	.23195	6.5	4.5	3.5	44	5	89	24	2	92	0	
28	.24948	6.9	5.0									
29	.31684	6.5	4.0	5.5	36	20	44	38	5	87	0	
30	.26238	6.6	3.0									
31	.24047	6.5	5.0									
Tot.	7.37541		146		416	74	722	330	35	779		
Avg.	237916		4.7		46	8	80	37	4	87		1.29



MONTHLY REPORT OF WASTE TREATMENT PLANT WATER QUALITY

MCBCL 11345/8 (REV. 6-83)

PLANT **COURTHOUSE BAY** MONTH **MAY 1986**

DATE	PLANT EFFLUENT DATA				5 DAY 20° C. BOD			SUSPENDED SOLIDS			COLIFORM	
	FLOW TOTAL DAILY GPD	PH	CHLORINE RESIDUAL		RAW mg/1	EFFLUENT mg/1	PERCENT REMOVAL	RAW mg/1	EFFLUENT mg/1	PERCENT REMOVAL	NUMBER PER 100 ml	GEOMETRIC MEAN
1	.4402			1.5	156	5	97	164	3	98	0	
2	.3662	6.7	10.0+									
3	.3698	6.6	1.5									
4	.3670	6.6	1.0									
5	.4082	6.7	1.0									
6	.5724	6.7	2.0	0.5	96	5	95	86	2	98	60	
7	.5812	6.6	2.0									
8	.3510	6.7	2.0	1.8	104	7	93	126	6	95	0	
9	.3350	6.6	2.0									
10	.3154	6.7	2.0									
11	.3426	6.6	3.0									
12	.4280	6.8	2.0									
13	.5400	6.6	3.0	1.8	308	12	96	92	8	91	0	
14	.4622	6.5	1.5									
15	.5082	6.6	3.0	2.2	108	8	93	64	6	91	0	
16	.4200	6.5	3.0									
17	.3580	6.8	4.0									
18	.3338	6.7	4.0									
19	.4748	6.6	3.0									
20	.5529	7.0	3.0	2.0	120	9	93	365	4	99	0	
21	.5050	6.9	4.0									
22	.4568	6.9	4.0	2.5	80	9	89	70	6	91	7000	
23	.4619	6.4	2.5									
24	.4000	6.6	2.0									
25	.5564	6.6	1.0									
26	.4992	6.6	2.0									
27	.4871	6.9	1.0	3.1	128	3	96	80	1	99	0	
28	.3410	6.8	2.0									
29	.4387	6.8	4.0	2.7	304	5	98	350	1	100	0	
30	.3656	6.7	3.0									
31	.4631	6.7	3.0									
Tot.	13,5017		81.5		1404	63	850	1397	37	862		
Ave	435538		2.6		156	7	94	155	4	96		4.21*



MONTHLY REPORT OF WASTE TREATMENT PLANT WATER QUALITY

MCBCL 11345/8 (REV. 6-83)

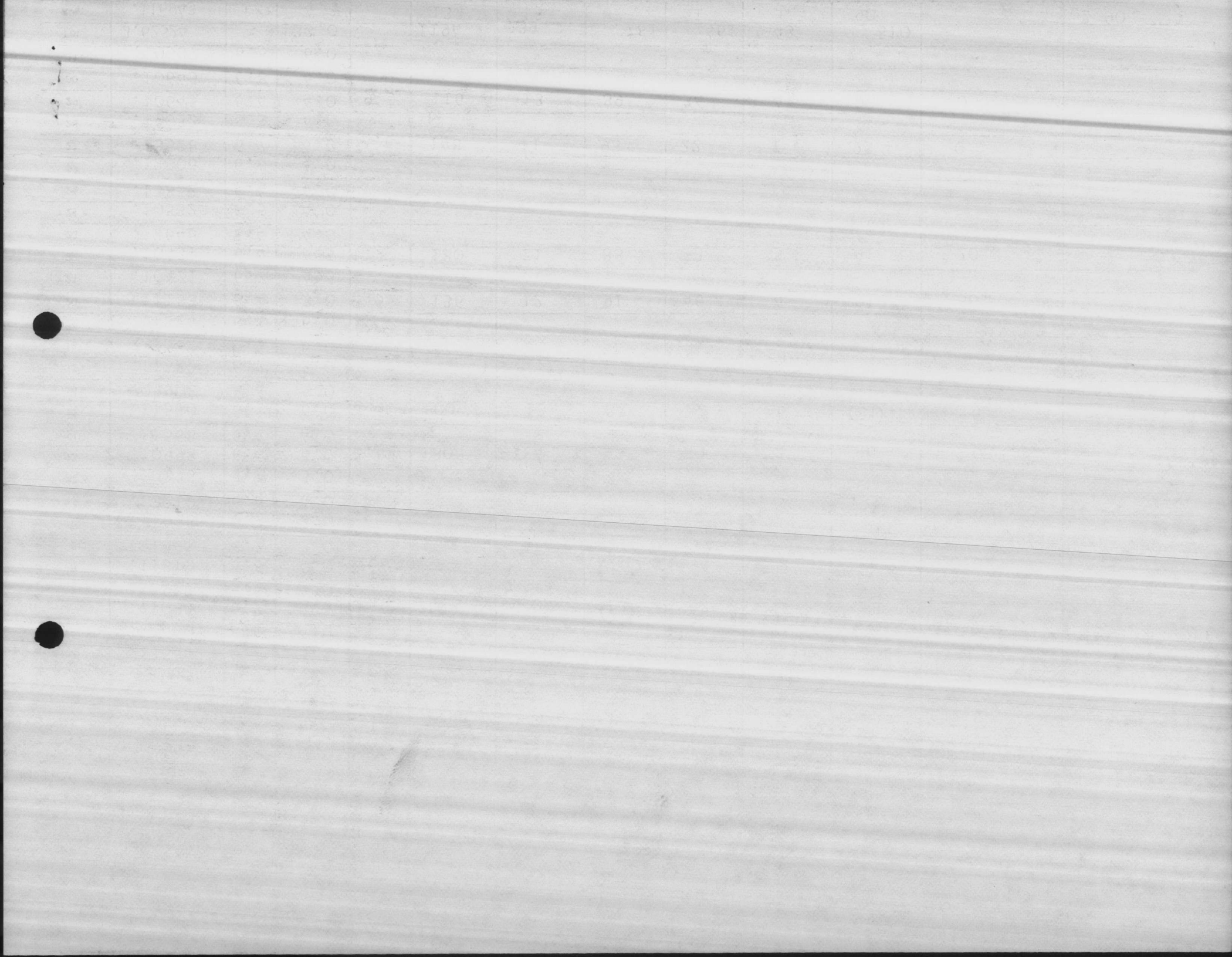
PLANT

ON SLOW BEACH

MONTH

MAY 1986

DATE	PLANT EFFLUENT DATA				5 DAY 20° C. BOD			SUSPENDED SOLIDS			COLIFORM	
	FLOW TOTAL DAILY GPD	PH	CHLORINE RESIDUAL		RAW mg/1	EFFLUENT mg/1	PERCENT REMOVAL	RAW mg/1	EFFLUENT mg/1	PERCENT REMOVAL	NUMBER PER 100 ml	GEOMETRIC MEAN
1	.1354	6.6	4.0	2.4	176	18	90	78	5	94	0	
2	.12575	6.5	4.0									
3	.10035	6.8	3.0									
4	.13644	6.7	3.5									
5	.13640	6.6	4.0									
6	.11095	6.7	4.5	2.4	104	20	81	62	7	89	2	
7	.12917	6.6	4.0									
8	.11312	6.6	4.0	2.6	56	17	70	54	8	85	0	
9	.11391	6.7	3.0									
10	.11998	6.7	3.0									
11	.13210	6.6	4.0									
12	.10296	6.7	3.0									
13	.10998	6.4	6.0	2.6	180	14	92	80	3	96	0	
14	.11568	6.4	4.0									
15	.11530	6.3	6.0	4.1	100	13	87	32	6	81	6	
16	.09908	6.4	6.0									
17	.11582	6.2	5.0									
18	.11582	6.6	6.0									
19	.11224	6.4	6.0									
20	.11153	6.4	3.0	2.5	136	12	91	46	4	91	60	
21	.10471	6.3	4.5									
22	.10431	6.4	4.5	1.7	180	21	88	53	5	91	20	
23	.12646	6.4	4.0									
24	.10532	6.5	4.0									
25	.13852	6.4	4.0									
26	.12006	6.6	4.0									
27	.13528	6.7	4.0	2.6	148	11	93	22	1	95	0	
28	.12033	6.5	4.0									
29	.10645	6.4	4.0	9.5	116	13	89	34	4	88	0	
30	.10645	6.8	4.0									
31	.10537	6.6	6.0									
Tot.	3.62524		133.0		1196	139	781	461	43	810		
Ave.	.116943		4.3		133	15	87	51	5	90		2.90



6288
NREAD
24 Jun 86

Mr. Paul Wilms, Director
Division of Environmental Management
NC Department of Natural Resources
and Community Development
Post Office Box 27687
Raleigh, North Carolina 27611

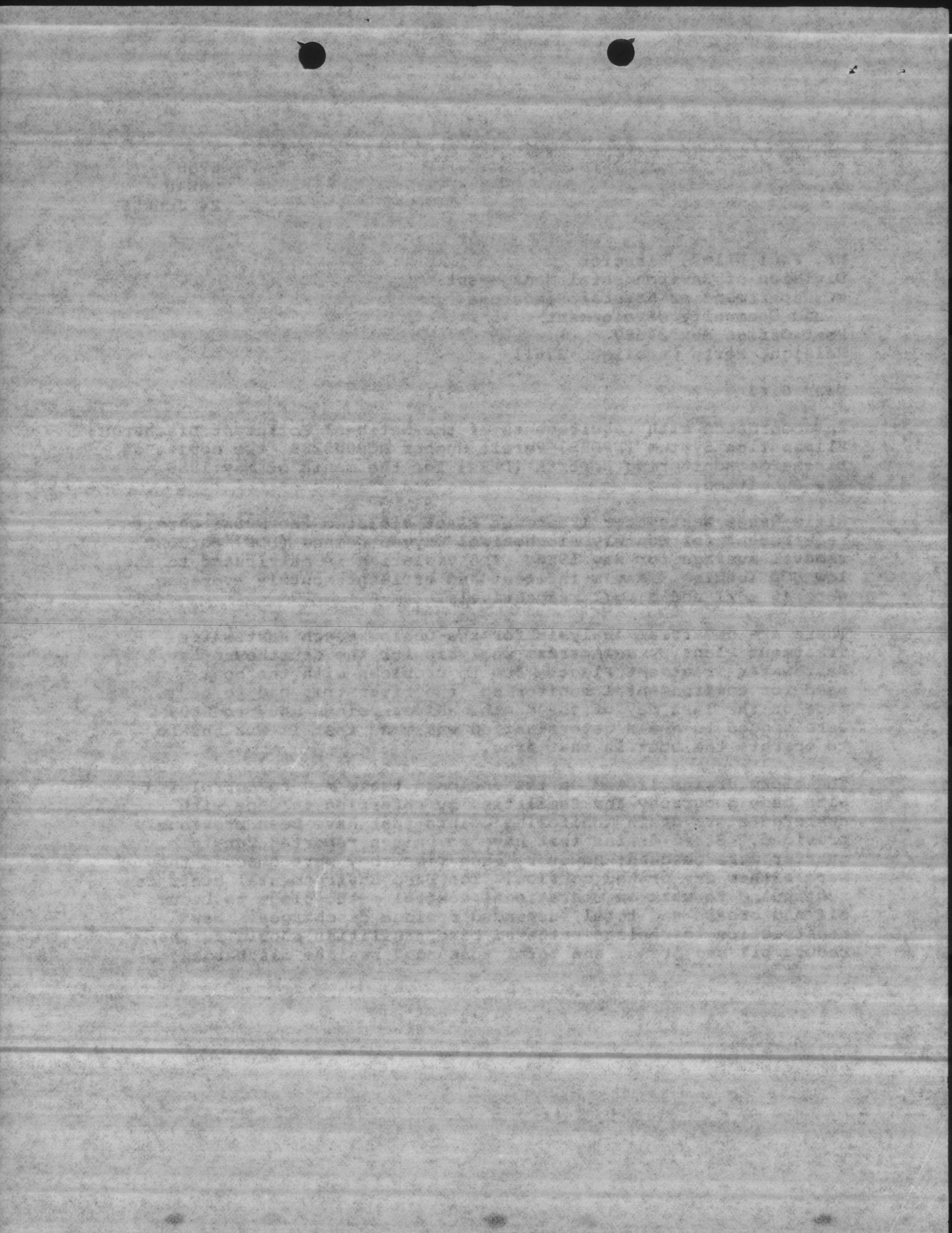
Dear Sir:

In accordance with requirements of the National Pollutant Discharge Elimination System (NPDES) Permit Number NC0003239, two copies of Discharge Monitoring Reports (DMRs) for the month of May 1986 are submitted.

Rifle Range Wastewater Treatment Plant violated the NPDES permit requirement for monthly Biochemical Oxygen Demand (BOD) percent removal average for May 1986. The violation is attributed to the low BOD loading. May's influent and effluent monthly averages were 46 mg/l and 8 mg/l respectively.

There are no stream analysis for the Onslow Beach Wastewater Treatment Plant or downstream analysis for the Courthouse Bay Wastewater Treatment Plant. Due to problems with the boat used for environmental monitoring, the river trip had to be made on the last day of the month. River points RW07 to RW09 were fogged in and a determination was made that it was unsafe to operate the boat in that area.

The storm drains listed on the enclosed table may be correlated with base geography and facilities by referring to maps with numbered storm drain monitoring points that have been previously provided. Storm drains that have no values reported for the quarter were checked; however, each time they were checked they were either dry or had no flow. The Base Environmental staff is continuing to work on operational control methodology to reduce oil and grease and total suspended residue discharges. New construction to replace outdated base facilities should further reduce oil and grease and total suspended residue discharges.



6288
NREAD

Questions regarding this report should be forwarded to Ms. Elizabeth Betz, Supervisory Chemist, Natural Resources and Environmental Affairs Division, Assistant Chief of Staff, Facilities at (919) 451-5977.

Sincerely,

J. I. WOOTEN
Director, Natural Resources Division
Assistant Chief of Staff, Facilities
By direction of the Commanding General

Encls:

(1) DEM Forms MR-1, MR-2 & MR-3 (2 copies)

Copy to:

EPA Region IV
CMDR LANTNAVFACENGCOM
NEESA

Blind copy to:

BMAIND (Util Dir)
WQCL

1954
1953

Division of the Federal Bureau of Investigation
Washington, D. C. 20535

Director, Federal Bureau of Investigation
Washington, D. C. 20535

Enclosed for you are two copies of a report

Very truly yours,
Special Agent in Charge

Blind copy for
Special Agent in Charge
1954

11330/1
NREAD

08 Jun 86

Mr. John McFadyen
Water Supply Branch
Division of Health Services
North Carolina Department of
Human Resources
Post Office Box 2091
Raleigh, North Carolina 27602

Dear Mr. McFadyen:

Enclosed are the completed Department of Health Forms (DHS 1942 2/74) for all water treatment plants aboard Marine Corps Base Camp Lejeune for the period 1-31 May 1986. Also enclosed are the weekly Chemical Analysis Forms (MCBCL 11330/3 Rev 3-82) for the same period, as requested in the 25 October 1982 letter from Mr. Charles Rundgren of your office.

The analysis is run by the Quality Control Laboratory located in the Natural Resources and Environmental Affairs Division, Assistant Chief of Staff, Facilities. Ms. Elizabeth Betz, Supervisory Chemist, Quality Control Laboratory, telephone (919) 451-5977 is the point of contact in this matter.

Sincerely,

J. I. WOOTEN
Director

Encl:

- (1) Dept of Health Forms
- (2) Chemical Analysis Forms

Copy to:

NAVFACENGCOM (Code 114)

Blind copy to:
BMO (Attn: Util Dir)
WQCL (2 copies)

1944

1945

1946

1947

1948

1949