

ENVIRONMENTAL CHEMISTRY & MICROBIOLOGY LABORATORY REPORT
 CHEMICAL ANALYSIS - WATER TREATMENT PLANTS
 MC8CL 11330/3 (REV 7-87)

DATE COLLECTED

8-18-87

DATE(S) ANALYZED

8-18-87

PLANT PARAMETER (UNITS)	HADNOT POINT 04-67-041	MCAS NEW RIVER 04-67-042	HOLCOMB BLVD 04-67-043	COURTHOUSE BAY 04-67-046	RIFLE RANGE 04-67-047	ONSLow BEACH 04-67-048			
pH-LABORATORY	9.2	8.5	8.6	7.9	8.2	7.7			
STABILITY	+ 0.4	0	+ 0.3	- 0.4	- 0.2	- 0.6			
PHENOLTHALEIN ALKALINITY (PPM)	12	6	2	0	0	0			
METHYL ORANGE ALKALINITY (PPM)	56	142	62	192	152	174			
CARBONATES AS CaCO ₃ (PPM)	24	12	4	0	0	0			
BICARBONATES AS CaCO ₃ (PPM)	32	130	58	192	152	174			
CHLORIDES AS Cl (PPM)	14	78	16	18	10	26		1	
HARDNESS AS CaCO ₃ (PPM)	50	50	70	56	62	56			
IRON AS Fe (PPM)	AA	DOWN							
FLUORIDE (PPM)	AM	0.85		0.88					
	PM	0.92	0.55	0.87	0.12	0.10	0.14		
TURBIDITY (NTUS)	AM	0.3		0.2					
	PM	0.5	0.2	0.3	0.1	0.1	0.1		
CHLORINE RESIDUAL (PPM)	1.0	0.8	1.2	1.2	0.8	N.R.			

REMARKS:

N.R. = NO RESULTS

COPY TO:

UTIL Div, BMD _____

WATER TREATMENT, UTIL Div, BMD

PMU, NAYHOSP PMU, MCAS-NR

DIVISION OF HEALTH SERVICES
 N.C. DEPT OF HUMAN RESOURCES

NREAD

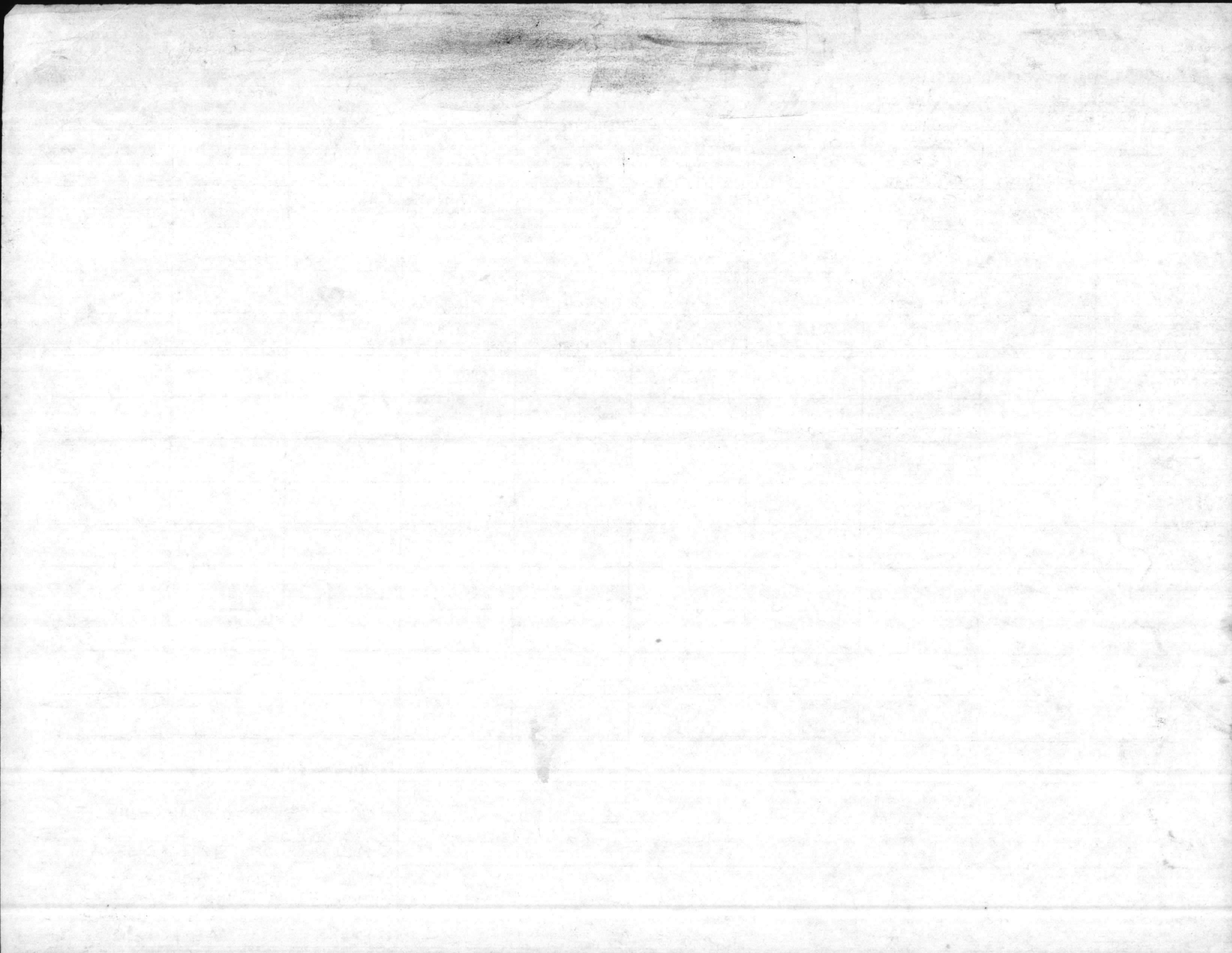
FILE (ATTACH WKST)

REPORT DATE:

8-18-87

REPORT PREPARED BY:

Carol Shree



ENVIRONMENTAL CHEMISTRY & MICROBIOLOGY LABORATORY REPORT
 CHEMICAL ANALYSIS - WATER TREATMENT PLANTS
 MC8CL 11330/3 (REV 7-87)

DATE COLLECTED

9-15-87

DATE(S) ANALYZED

9-15-87

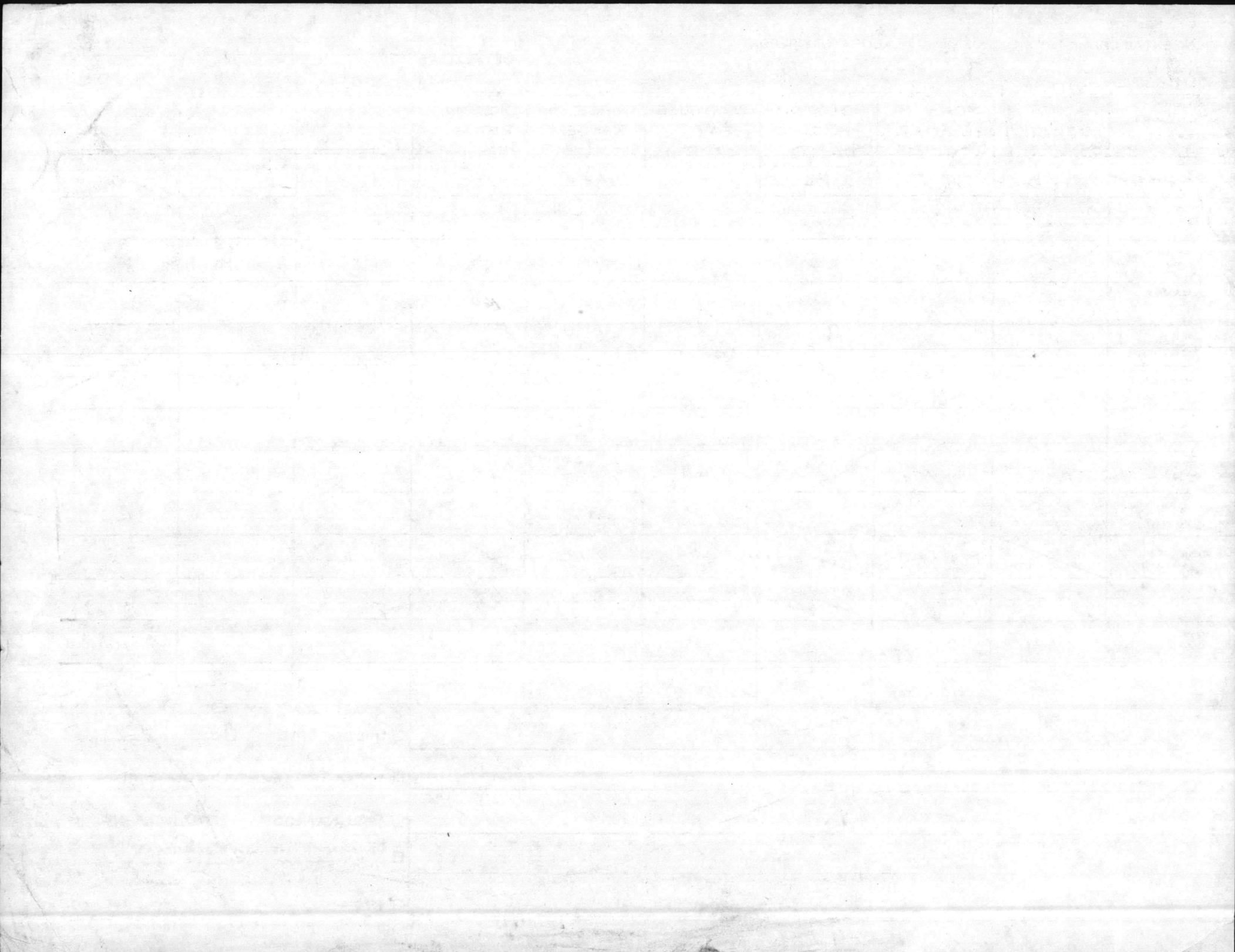
PLANT PARAMETER (UNITS)	HADNOT POINT 04-67-041	MCAS NEW RIVER 04-67-042	HOLCOMB BLVD 04-67-043	COURTHOUSE BAY 04-67-046	RIFLE RANGE 04-67-047	ONSLow BEACH 04-67-048		
H-LABORATORY	8.0	8.5	8.0	7.9	7.8	7.6		
STABILITY	+0.2	+0.1	0.0	-0.1	-0.2	-0.3		
PHENOLTHALEIN ALKALINITY (PPM)	0	6	0	0	0	0		
METHYL ORANGE ALKALINITY (PPM)	76	130	72	170	174	160		
CARBONATES AS CaCO ₃ (PPM)	0	12	0	0	0	0		
BICARBONATES AS CaCO ₃ (PPM)	76	118	72	170	174	160		
CHLORIDES AS Cl (PPM)	4	52	6	12	32	16		1
HARDNESS AS CaCO ₃ (PPM)	70	58	86	76	68	94		
IRON AS Fe (PPM)				A.A. DOWN				
FLUORIDE (PPM)	AM PM 1.0 1.1	0.52	1.04 0.90	0.12	0.10	0.11		
TURBIDITY (NTUS)	AM PM 0.4 0.4	0.8	0.5 0.6	0.4	0.4	0.7		
CHLORINE RESIDUAL (PPM)	1.0	0.1	1.2	1.3	1.0	1.1		

REMARKS:
 O.B. Pond PH 8.1

- COPY TO:
- UTIL DIR, BMD
 - WATER TREATMENT, UTIL DIV, BMD
 - PMU, NAYHOSP
 - PMU, MCAS-NR
 - DIVISION OF HEALTH SERVICES
N.C. DEPT. OF HUMAN RESOURCES
 - NREAD
 - FILE (ATTACH WKST)

REPORT DATE:
 9-16-87

REPORT PREPARED BY:
 Robert G. Deffen



ENVIRONMENTAL CHEMISTRY & MICROBIOLOGY LABORATORY REPORT
 CHEMICAL ANALYSIS - WATER TREATMENT PLANTS
 MC8CL 11330/3 (REV 7-87)



DATE COLLECTED
10-13-87

DATE(S) ANALYZED
10-13-87

PLANT PARAMETER (UNITS)	HADNOT POINT 04-67-041	MCA'S NEW RIVER 04-67-042	HOLCOMB BLVD 04-67-043	COURTHOUSE BAY 04-67-046	RIFLE RANGE 04-67-047	ONSLow BEACH 04-67-048			
pH-LABORATORY	8.7	8.5	8.5	7.6	8.2	7.5			
STABILITY	+0.4	+0.3	+0.4	-0.4	0.0	-0.5			
PHENOLTHALEIN ALKALINITY (PPM)	4	10	2	0	2	0			
METHYL ORANGE ALKALINITY (PPM)	50	130	60	170	146	154			
CARBONATES AS CaCO ₃ (PPM)	8	20	4	0	4	0			
BICARBONATES AS CaCO ₃ (PPM)	42	110	56	170	142	154			
CHLORIDES AS Cl (PPM)	12	70	12	14	32	24			1
HARDNESS AS CaCO ₃ (PPM)	68	46	64	50	50	50			
IRON AS Fe (PPM)									
FLUORIDE (PPM)	AM PM 1.14 1.21	0.67	1.18 1.28	0.14	0.12	0.17			
TURBIDITY (NTUS)	AM PM 0.7 2.2	1.9	1.1 1.9	0.6	0.7	0.7			
CHLORINE RESIDUAL (PPM)	1.0	1.0	1.2	1.3	0.9	1.3			

REMARKS:

COPY TO:
 UTIL DIR, BMD
 WATER TREATMENT, UTIL DIV, BMD
 PMU, NAVHOSP PMU, MCAS-NR
 DIVISION OF HEALTH SERVICES
 N.C. DEPT. OF HUMAN RESOURCES
 NREAD FILE (ATTACH WKST)

REPORT DATE: 10-14-87

REPORT PREPARED BY: B. J. Burns

