



UNITED STATES MARINE CORPS
MARINE CORPS AIR BASES, EASTERN AREA
CHERRY POINT, NORTH CAROLINA 28533

10 cdt
P11010/1

MAC-ecf/GPS
11010
29 Apr 1977

RETURN TO
TEC REC

From: Commander
To: Distribution List

Subj: Revision of MCB Camp Lejeune/MCAS(H) New River Logistic Support Services Consolidation Agreement

Ref: (a) Marine Corps Air Bases East/Marine Corps Base, Camp Lejeune Host-Tenant Agreement for MCB Camp Lejeune/MCAS(H) New River Consolidation under cover ltr 110/bs-RJP, #11010/1 dtd 4 Apr 1974

Encl: (1) Marine Corps Air Bases East/Marine Corps Base, Camp Lejeune Logistic/Support Services Agreement for MCB Camp Lejeune/MCAS(H) New River Consolidation, Revision #1 dtd March 1977

1. The basic agreement contained in the reference is superseded and replaced by revision #1 contained in the enclosure.

2. Requests for additional copies should be forwarded to the Management Assistance Officer, Bldg 299, MCAS Cherry Point, N. C. 28533.

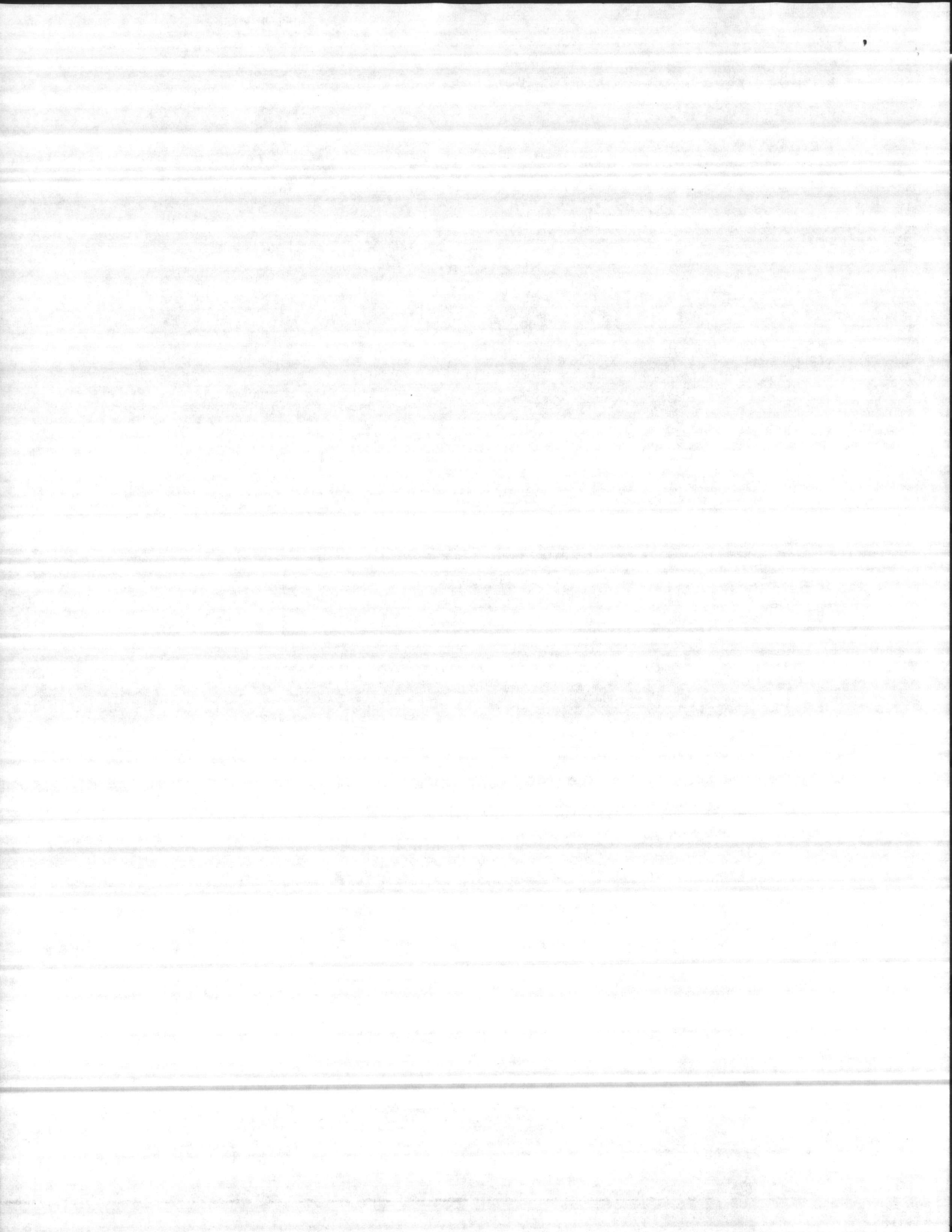
J. R. LERTZ
By direction

DISTRIBUTION:

- CMC (Code LMP)
- CMC (Code L)
- CG MCB CINC (6)
- CO MCAS(H) New River (6)

FAC ROUTING

110	
2A	
2B	
3C	
41	
50	
61	



MARINE CORPS AIR BASES EAST/MARINE CORPS BASE, CAMP LEJEUNE

LOGISTIC/SUPPORT SERVICES AGREEMENT .

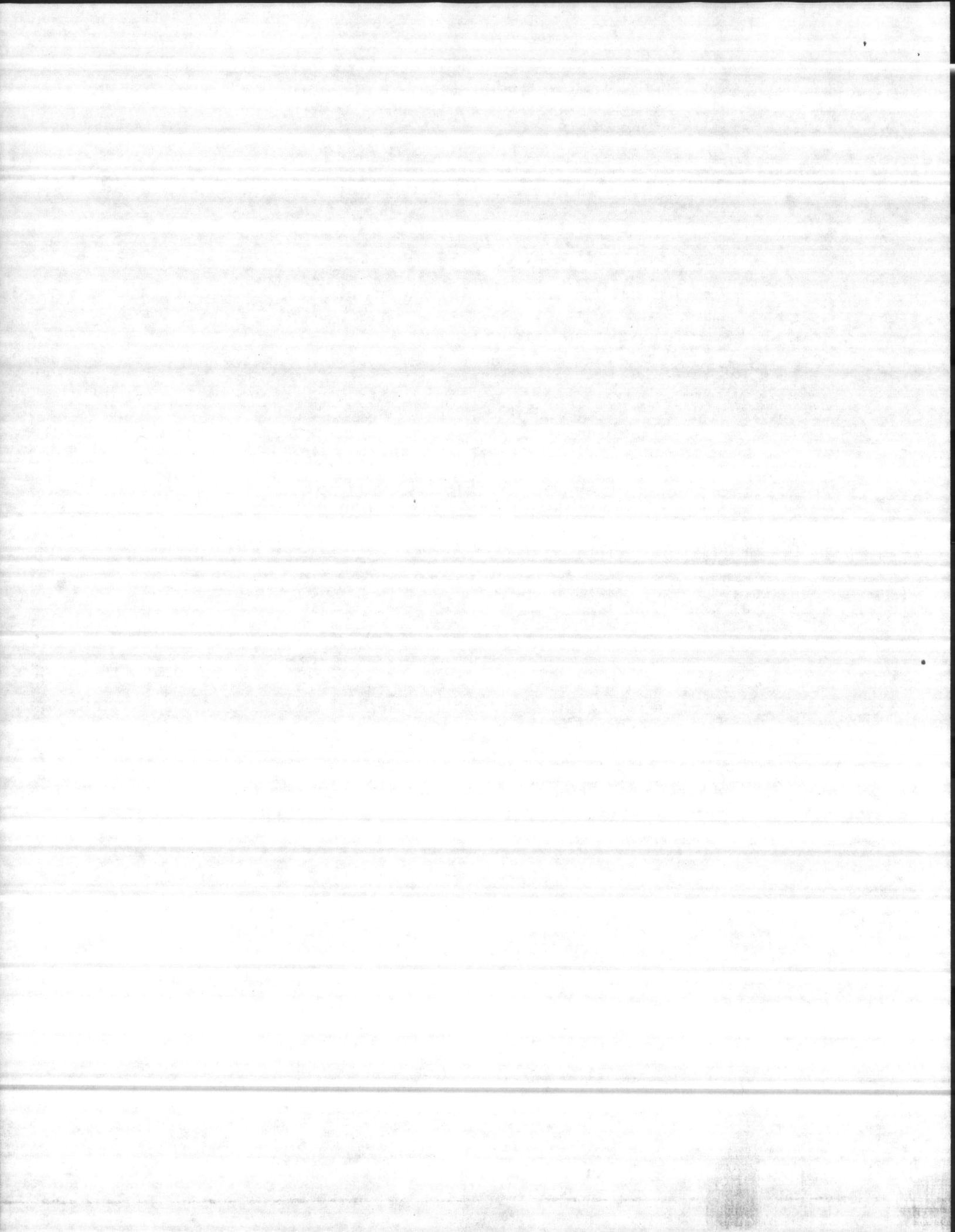
FOR

MCB, CAMP LEJEUNE/MCAS (H), NEW RIVER

CONSOLIDATION

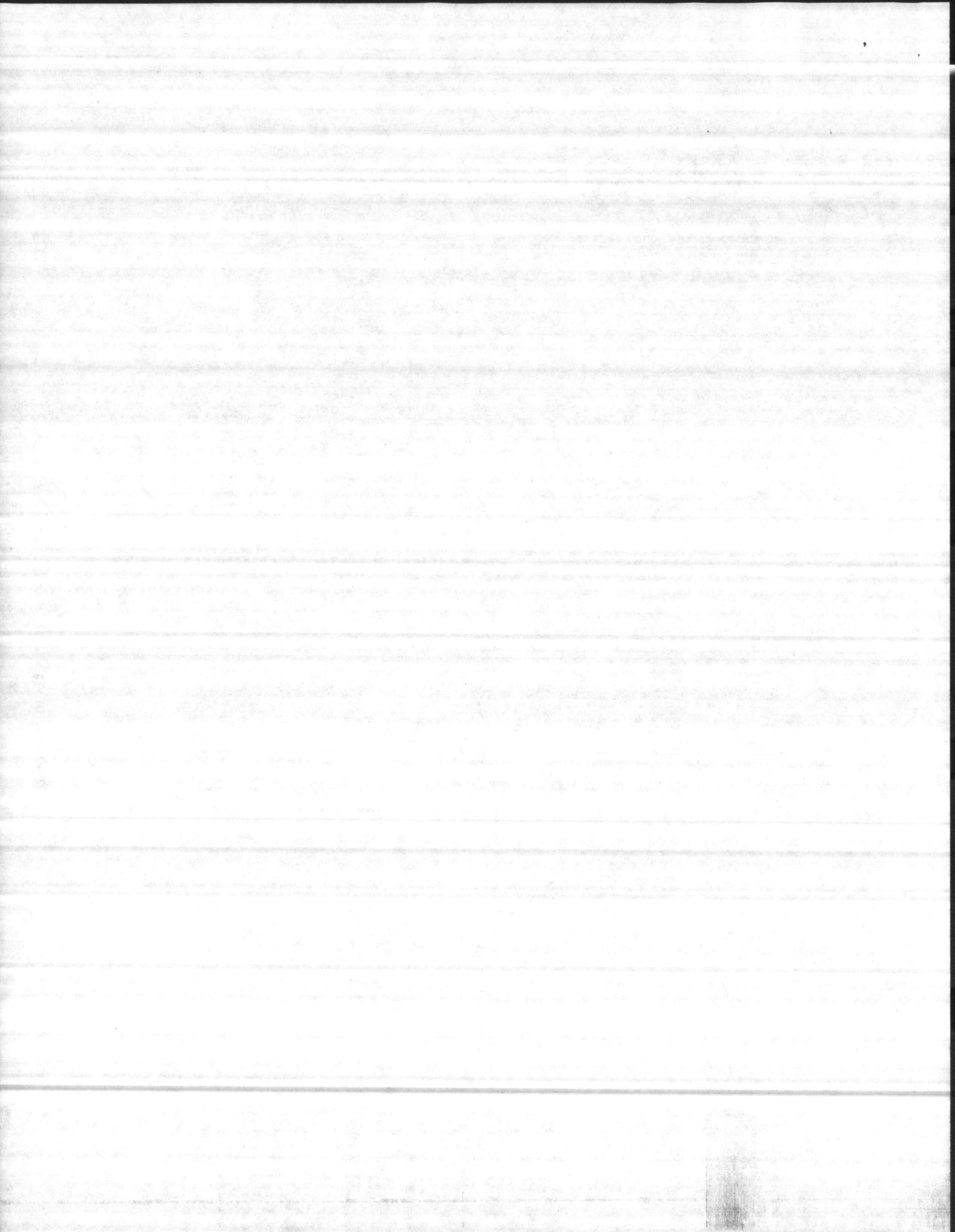
REVISION #1

MARCH 1977



TERMS OF AGREEMENT

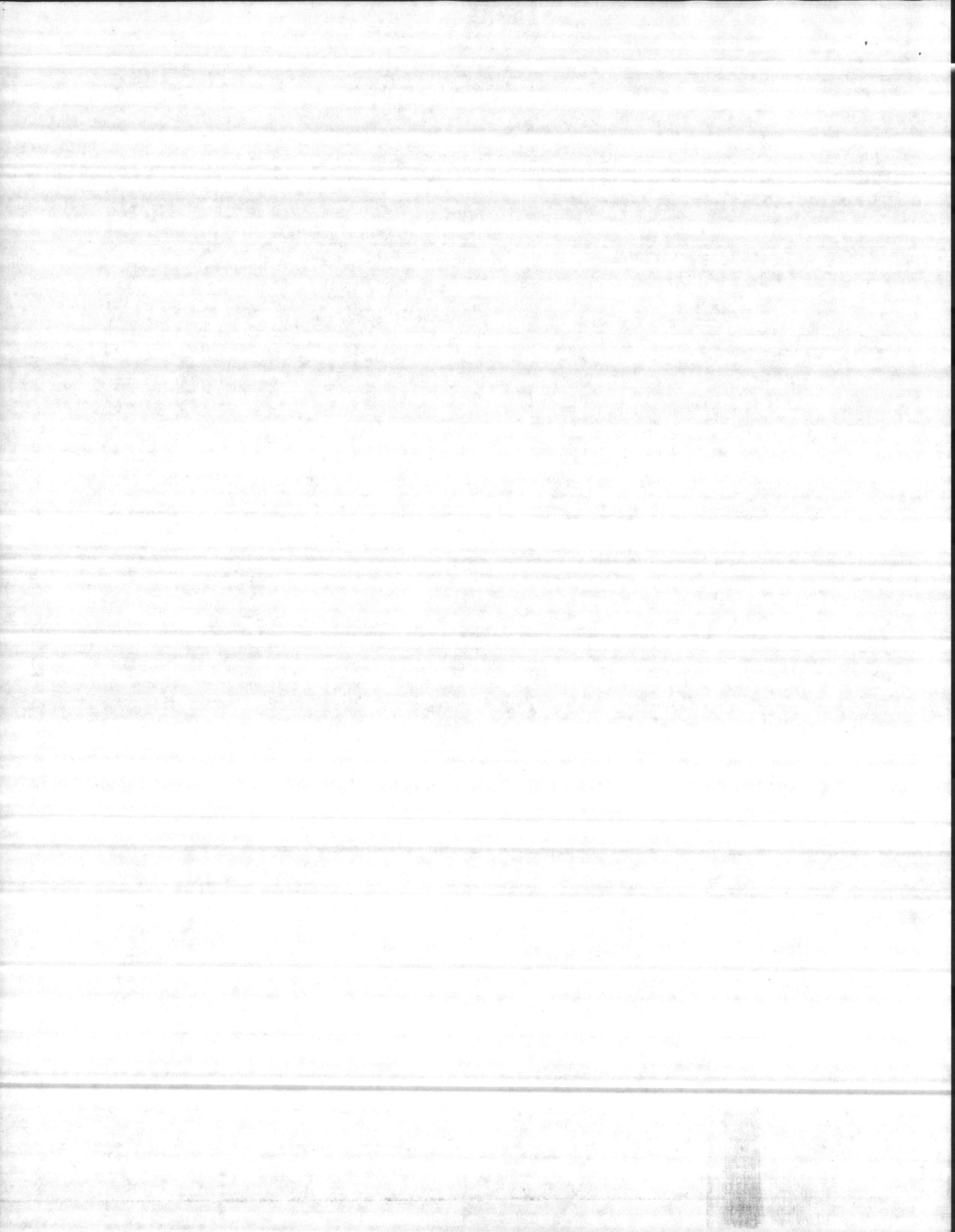
1. The undersigned agree to the terms of the attached agreement which documents support services to be provided by Marine Corps Base, Camp Lejeune in support of the Marine Corps Air Station (Helicopter), New River. Support services should be provided on site whenever possible to provide response necessary to the priority of the need. Continuing effort should be exerted to improve service and efficiency of operation and reduce costs and manpower requirements.
2. The concept of this logistic/support services agreement provides for the Commanding Officer, MCAS(H), New River (CO, MCAS(H)) to function as Commander, Marine Corps Air Bases, Eastern Area (COMCABE) representative to Commanding General, Marine Corps Base, Camp Lejeune (CG, MCB) for all matters that relate to the logistic and support services to be provided by MCB to MCAS(H) and other specified matters of mutual interest. This does not imply chain of command, but establishes and maintains the coordination and inter-communications necessary between the CO, MCAS(H) and CG, MCB in order to ensure the proper monitoring, adequacy, quality, and responsiveness of the support rendered to MCAS(H) and mutual cooperation in areas of common interest to both Commands.
3. In compliance with directives from higher headquarters covering plant property accounting and planning procedures, the CG, MCB will ensure maximum use of all resources in meeting MCAS(H) requirements from the planning stage through the completion of any work in support of MCAS(H).
4. Commanding Officer, MCAS(H) New River is responsible for determining the air station Basic Facilities Requirements List (BFRL) based upon decisions from Commandant of the Marine Corps regarding the authorized projected station loading.
5. In order to maintain the necessary Command level relationships to ensure proper execution of the logistic and support services functions, COMCABE will coordinate all transactions with the CG, MCB that are pertinent to this agreement. The CG, MCB will forward all proposed changes to orders, instructions, and policy-related correspondence generated in the execution of this support agreement to CO, MCAS(H). CO, MCAS(H) may forward his review and comments to COMCABE for further review and, if required, negotiation and coordination with CG, MCB. Upon concurrence by CO, MCAS(H), and if required, by COMCABE, the CO, MCAS(H) will comply with the applicable MCB, CLNC orders and directives.
6. Nothing in this agreement will be construed to obviate the authority or ability of the CO, MCAS(H) New River to exercise his delineated responsibilities. In executing the provisions of this logistic/support services agreement, Command responsibility, authority and related Command prerogative will be recognized by both parties.



It is understood that within the resources and authority of CG, MCB COMCABE, this agreement can be modified at any time should sufficient justification warrant such action, upon the mutual agreement of both parties.

[Signature]
MGEN H. ROSSMEYER, JR. Date 25 April 97
MCB, CAMP LEJEUNE NC 28542

[Signature]
MGEN V. A. ARMSTRONG Date 28 April 97
CG, MCAS, CHERRY POINT NC 28533



SECTION I

SUPPORT PROVISIONS AND RESPONSIBILITIES

Support Function

1. Plant Property

MCB Camp Lejeune

Assume accountability for all MCAS(H), New River Class I and II plant account items and those Class III and IV plant account items related to non-aviation support functions.

MCAS(H) New River

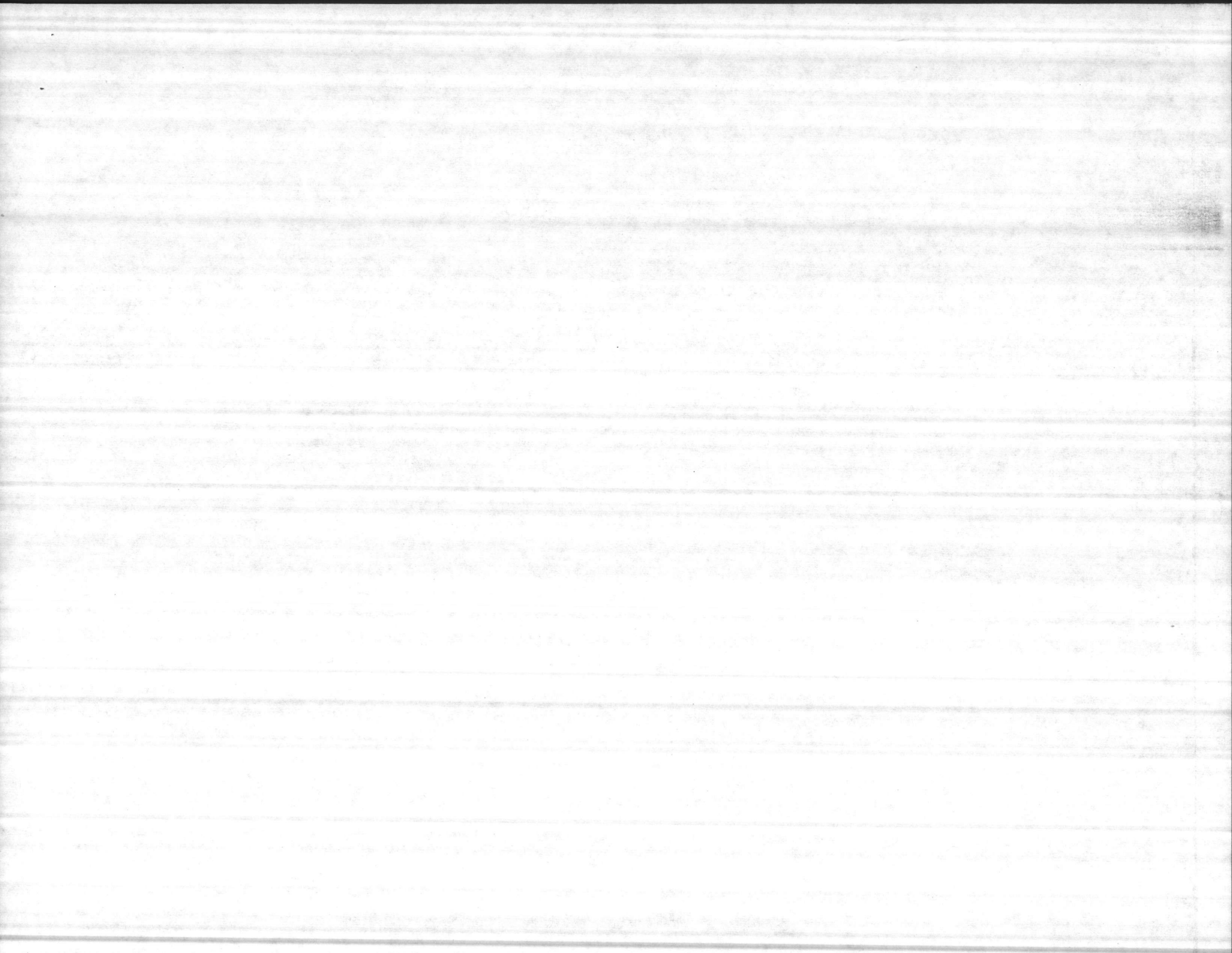
Assume responsibility as Program Administrator (92) for all Class I and II plant property as required to meet the primary mission of MCAS(H) and tenant FMF units. Retain accountability for Class III and IV plant property related to aviation support and other functions not consolidated.

Program administrator has the direction or authority exercised in those functions of command over the assigned facilities required for mission accomplishment, to include allocation to subordinate or tenant activities and the routine function of management. Within approved requirements, facilities, once assigned to a program administrator, will not be reallocated without mutual agreement of parties concerned.

2. Military Construction

Liaison with CO, MCAS(H); COMCABE; LANTNAVFACENGCOCOM and CMC for Master Planning all facilities projects, to include plans and specifications for MCON, Minor Construction, and NAF projects.

In that facility planning is a command responsibility and is directly related to the tasks and functions with which an installation commander is charged responsible for determining the Basic Facilities Requirements List (BFRL) based upon decisions from CMC regarding the authorized projected station loading



Support Function

Military Construction
(contd)

MCB Camp Lejeune

Contract awarding and supervision of construction.

Provide technical assistance for all planning, including BFRL and cost estimates.

Perform engineering tasks and complete technical information on MCON and facilities projects initiated by MCAS(H), New River and return to MCAS(H), New River for review and submission to higher headquarters.

MCAS(H) New River

(the organizational/unit personnel loading, equipment/aircraft loading, which must be supported by the installation). MCO 4000.20).

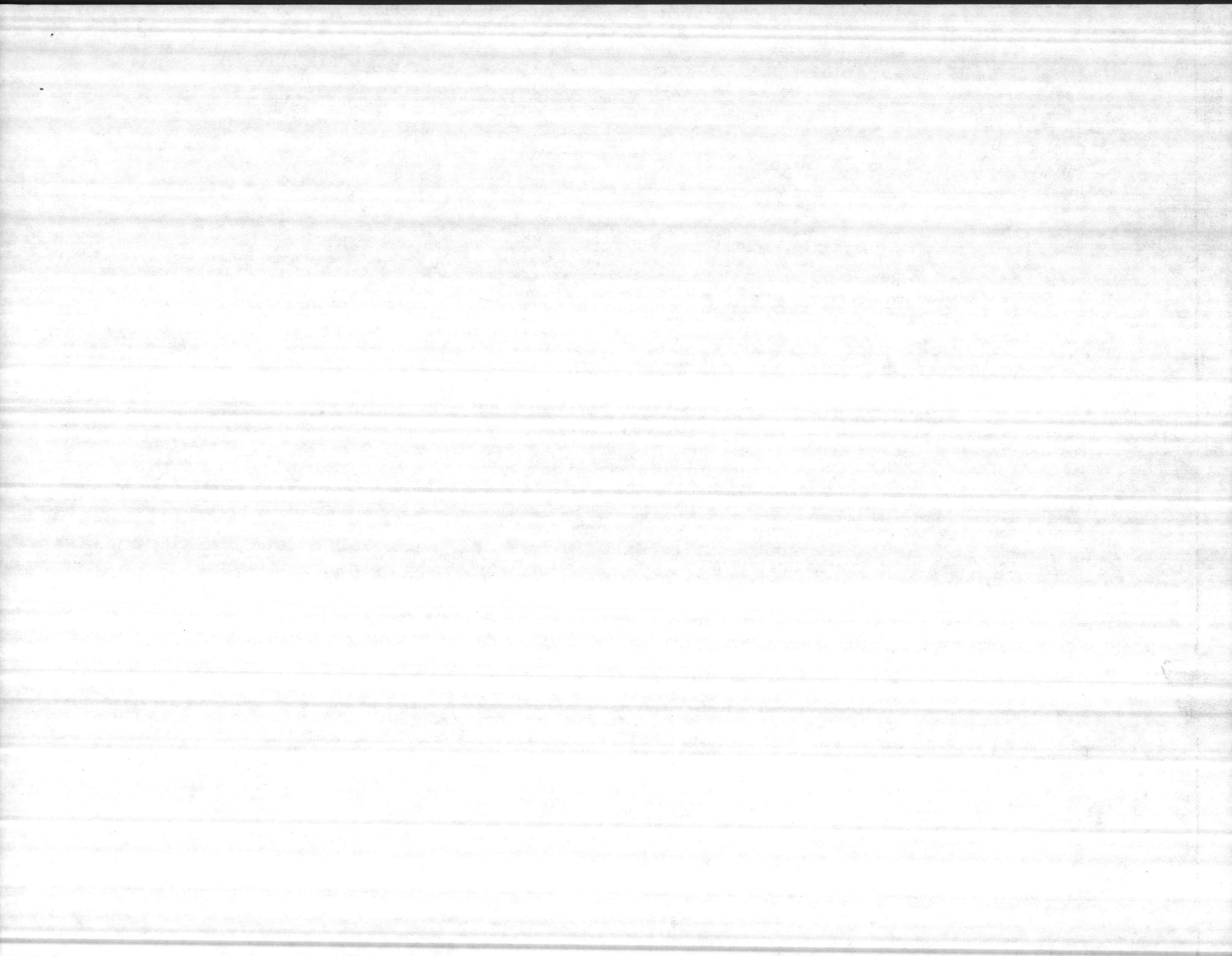
Will initiate Air Station MCON and facilities projects, justify requirement, complete preliminary information, and forward to MCB for completion of engineering tasks and inclusion of complete technical data. Upon receipt of completed MCON project from MCB, perform final review. Projects solely in support of the MCAS will be forwarded to COMCABEAST for review, approval, and forwarding to HQMC with copy to MCB CL. Projects in joint support of the MCAS and the MCB will, after review by COMCABEAST, be forwarded to MCB CL for appropriate action and coordination by representation on the Base Facilities Resources Management Board.

Comply with appropriate MCB, Camp Lejeune directives and the directives of higher authority to obtain MCB Public Works technical assistance and services.

3. Real Property Maintenance

Maintain in the most economical manner, consistent with operational requirements, all facilities, utilities and other related real property to a standard which will prevent deterioration beyond normal wear and tear.

Comply with appropriate MCB Camp Lejeune directives and directives of higher headquarters in order to obtain Base Maintenance Department services.



Support Function

Real Property
Maintenance (contd)

MCB Camp Lejeune

MCAS (H) New River

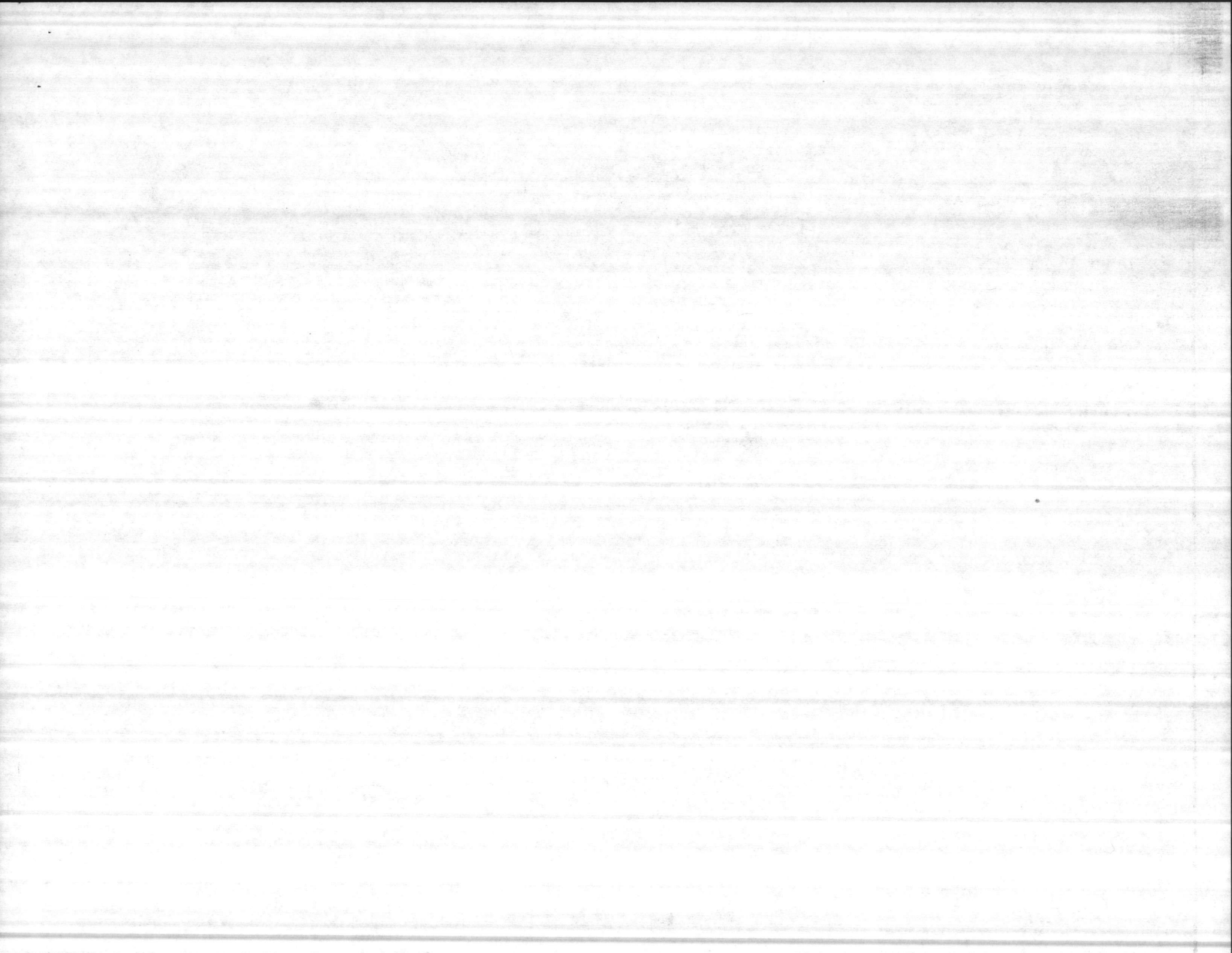
Control all maintenance in such a manner as to obtain the most efficient use of available manpower, equipment, material and money.

Operate and maintain telephone system, including purchases.

Formulate and execute a long-range maintenance program. Includes maintenance and repair of buildings, grounds, paved surfaces, utilities systems, other real property facilities; operation of utilities systems (includes utility purchases), provide other engineering support services, such as Maintenance Department administration, pest control, refuse and garbage disposal; minor construction; equipment installation; work support for government-owned personal property, encompassing installation, fabrication, technical inspections, and repair and miscellaneous services for other than real property which is not the responsibility of the user.

Repair and maintain, within capabilities, Naval Air Systems Command-sponsored equipment on a reimbursable basis.

Provide CG, MCAS(H) New River a copy of air station long range maintenance plan and revisions as they are published for command knowledge of mission accomplishment capability of the air station.



Support Function

Real Property
Maintenance (contd)

MCB Camp Lejeune

Formulate and execute a long range natural resources management and environmental control program. Include a forest management program for timber production and harvest, site preparation, prescribed burning, forest pest control, and forest fire control; a fish and wildlife program for control of fishing and hunting, fish pond management, wildlife habitat manipulation and protection of rare and endangered species; and environmental protection program which provides for a system of collection and disposal of waste petroleum products, monitoring for water and air pollution.

Special requirements required for hunting and fishing on or near MCAS(H) will be incorporated in all directives and programs.

MCAS(H) New River

Furnish special requirements for incorporation into the natural resources management and environmental program, as appropriate.

Provide station Environmental Affairs Officer (collateral duty assignment) liaison with and input to MCB Camp Lejeune for natural resources management and environmental affairs control programs. The station Environmental Affairs Officer will assist the MCB Camp Lejeune Environmental Affairs Officer in a monitoring capacity in the area of MCAS(H) New River, Camp Geiger and the Verona area.

The station Environmental Officer will furnish his Station Game Warden to MCB, Camp Lejeune for utilization in a monitoring and control capacity to satisfy requirements existing in the MCAS(H) New River/Camp Geiger/Verona area.



Support Function

4. Family Housing

MCB Camp Lejeune

Provide, maintain and assign housing to MCAS(H) New River personnel and tenant personnel, to include the following: housing referral, housing for non-quarters eligible personnel, Housing Board services, furnishings, check-in and check-out for occupants, tenant relations, administrative actions concerning letters of warning/eviction, and utilities services.

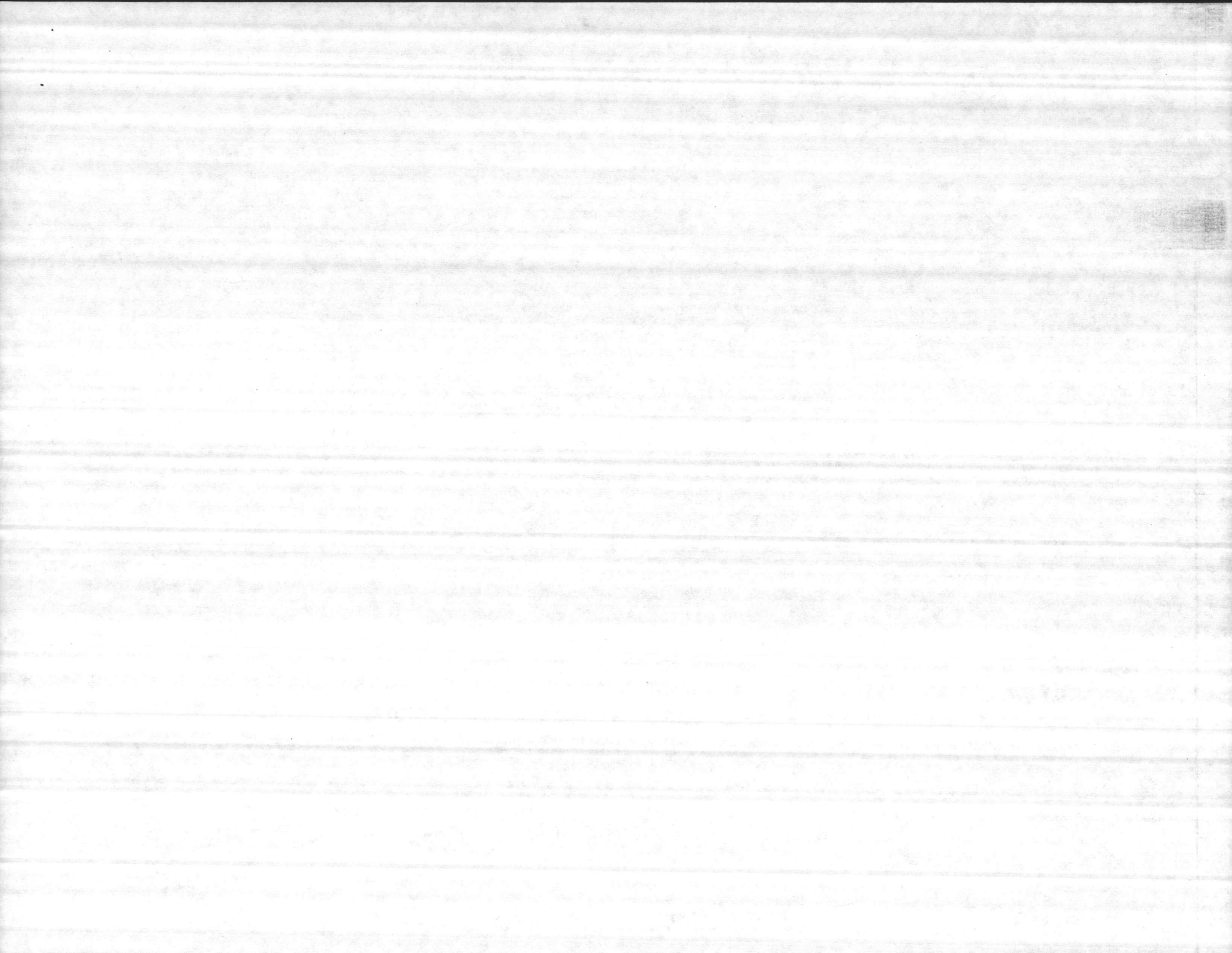
All Marines eligible for quarters will be eligible for assignment to all quarters at MCB Camp Lejeune/MCAS(H) New River appropriate to rank and family size. Quarters will be designated at MCAS(H) New River for CO, MCAS(H) New River and for CO's of tenant Marine Aircraft Groups at MCAS(H) New River.

MCAS(H) New River

Comply with CG, MCB, Camp Lejeune directives and directives of higher headquarters for housing services.

Provide a representative (member) to MCB Camp Lejeune Housing Board.

After common processing, in accordance with MCB directives, letters of warning and/or eviction for personnel in government quarters aboard MCAS(H) New River, whether initiated by MCB or MCAS(H) authorities, will be signed by the CO, MCAS(H). The eviction letters will then be returned to the Director, Quarters and Housing via CG, MCB for delivery to the tenant concerned.



5. Fire Protection and Prevention (less Crash Crew)

Provide supervision, protection fire fighting personnel and equipment pertaining to structural fires. Provide for fire prevention inspection reports, and maintenance of structural fire fighting equipment.

Furnish facilities for parking crash fire equipment under supervision of Station Captain.

Provide support for crash fires. Provide fire fighting supervision for crash related structural fires.

6. Motor Transport

Provide all Motor Transport support, Material Handling Equipment, Air Operations Vehicles and Equipment Support, Maintenance Support, less that sponsored by NAVAIRSYSCOM.

Provide maintenance for NAVAIRSYSCOM sponsored air operations related vehicles, equipment and materials handling equipment on reimbursable basis within capability. Example: aircraft tow trucks.

Provide vehicles to MCAS(H) New River and 2d MAW units on a custody basis within availability.

Comply with MCB Camp Lejeune directives and directives of higher headquarters concerning fire protection and prevention. Retain responsibility for provision of crash equipment apparatus and crash crews.

Responsible for supervision of fire fighting operations related to aircraft crashes. Provide support for structural fires.

Comply with appropriate MCB Camp Lejeune directives and higher headquarters directives pertaining to obtaining motor transport services.



Support Function

MCB Camp Lejeune

MCAS (H) New River

- | | | |
|--|--|--|
| 7. Ordnance (to include Aviation Ordnance) | Obtain and furnish ammunition for requalification and security.

Continue to provide storage facilities for aviation ordnance. | Comply with MCB Camp Lejeune directives and directives of higher headquarters to obtain ordnance support.

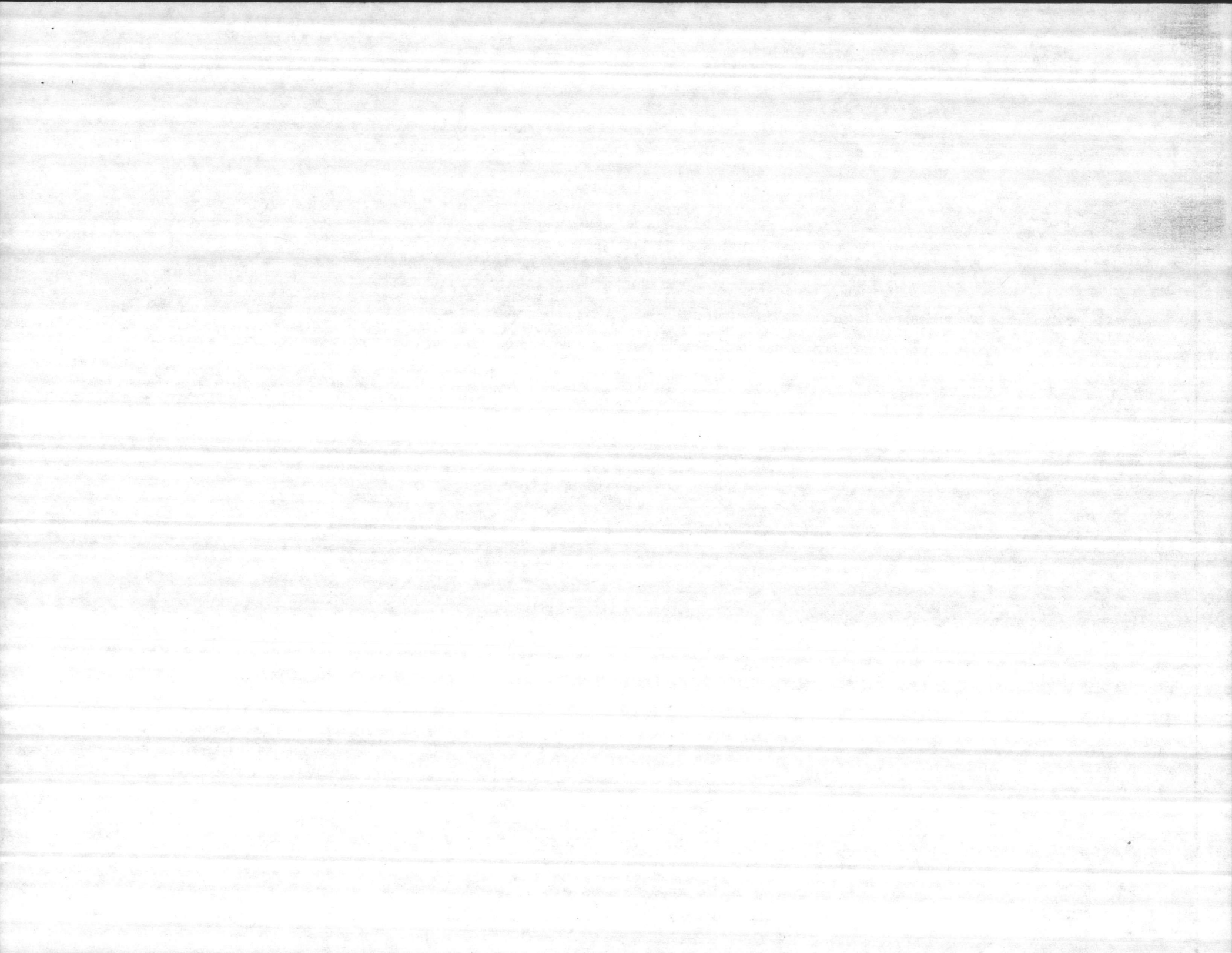
Provide personnel support as requested. (Working parties) |
| 8. Supply Services | | |
| a. Food Services | Perform food services operations function. Provide technical assistance and inspections as required. | Has operational control of day-to-day dining facility operations, including personnel support. |
| b. Purchasing/ Contracting | Perform all purchasing and contracting functions for MCAS(H) New River and tenant organizations. | Submit purchasing/contracting requirements to MCB Camp Lejeune citing chargeable appropriations. |
| c. SERVMART (Acct 260X) | Support MCAS(H) New River and tenant organizations with administrative and housekeeping supplies through a self-service center outlet. | Comply with MCB Camp Lejeune orders and directives. |
| d. Fuel Domestic | Contract for and deliver #2 and #6 fuel oil requirements to MCAS(H) New River and tenant organizations. | |
| e. Garrison Property | Provide and account for barracks furniture and furnishings, office furniture and furnishings, and office equipment (excluding plant account) for MCAS(H) New River and tenant organizations. | Submit garrison property requirements to MCB Camp Lejeune. Retain H&MS organic property function. |



2. Industrial Safety

Provide complete range of occupational safety services to include:

- a. Technical assistance and advice.
- b. Inspection services.
- c. Training/indoctrination for employees as required.
- d. Administrative services.
- e. Preparation of reports required.
- f. Provide protective eyewear as required.
- g. Provide liaison and assistance in areas of industrial hygiene and environmental conditions.
- h. Provide advice and assistance in disposing of hazardous chemical waste.
- i. Provide on-site civilian safety specialist.
- j. Assign MCB Safety Manager collateral duties as MCAS (H) New River Safety Officer.



Support Function

10. Marine Corps Exchange

MCB Camp Lejeune

Administer, operate and assume responsibility for all Marine Corps Exchange activities located at MCAS(H) New River as outlined in Base Order 4066.1_.

Provide data entry payroll services on a reimbursable basis to other nonappropriated fund activities at MCAS(H) New River who are utilizing the payroll services provided through the Data Processing Installation, Marine Corps Exchange Service, Quantico, Virginia.

Predicate distribution of annual profits to the MCB, Camp Lejeune and MCAS(H) New River Recreation Funds in accordance with the Marine Corps Exchange Manual based on the average monthly personnel strengths at Camp Lejeune and New River. Distribute annual profits, set aside for local recreation funds, in twelve equal monthly payments commencing with the first day of April each year.

MCAS(H) New River

Comply with the provisions of Base Order 4066.1_ relative to maintenance, work requests, evaluation of Exchange support, police, sanitation, discipline, security and personnel support to include an Area Assistant Exchange Officer.

Provide a voting member to the Marine Corps Exchange Council.



Support Function

MCB Camp Lejeune

MCAS(H) New River

11. Public Affairs (less Station newspaper and Air Ops releases)

Coordinate common public affairs functions with MCAS(H) New River; e.g., radio/television broadcasts, community relations and Speakers Bureau.

Coordinate common public affairs with MCB Camp Lejeune. Maintain Joint Public Affairs function at MCAS(H) New River with complete external release authority except those aviation peculiar matters requiring COMCABEAST approval.

12. Comptroller

Assume complete financial responsibility for MCAS(H) New River functions consolidated with MCB Camp Lejeune.

Retain Comptroller function to support those functions not consolidated.

Provide an annual estimate of funds budgeted for operations and maintenance support of MCAS(H) New River to the Commander, Marine Corps Air Bases, Eastern Area (Code FCB).

13. Photographic Facilities

Provide ground still and motion picture photography to include black and white, color and color slides. Process B&W and color photography, less motion picture. Provide necessary management, to include job assignment and control, administration, procurement, stockage and issue of supplies, and fiscal management IAW current Marine Corps directives. Provide technical services and assistance for instructional TV. Provide duty photographic personnel to include crash photographer.

Furnish requirements IAW MCB CLNC Order P3000.4. Exercise operational control of assigned duty photographers, to include ID/pass photographer (latter may be non-OF46 personnel).



Support Function

MCB Camp Lejeune

MCAS(H) New River

14. Training Support Center (Ground Training Aids and Audiovisual)

Provide ground training support services to include production of training aids, devices, equipment and graphic arts. Provide necessary management to include job assignment and control, administration, procurement, stockage and issue of ground training aids, devices, equipment, and fiscal management IAW current Marine Corps directive and OPNAVINST. Provide for stockage, maintenance and issue of audiovisual equipment and training films to include management of a satellite audiovisual branch at MCAS(H) New River. Provide instruction for operators of audiovisual equipment. Comply with MCO 1551.1 and OPNAVINST 1551.6 . Audiovisual equipment for MCAS(H) New River will continue to be considered as aviation related training equipment and provided and maintained in accordance with OPNAVINST.

Furnish requirements for ground training aids, devices and equipment IAW MCB CLNC Order P3000.4. Continue to operate, maintain and fund for aviation peculiar training aids/devices equipment. Provide facilities for operation of satellite audiovisual branch.

15. Communications Electronics (selected items)

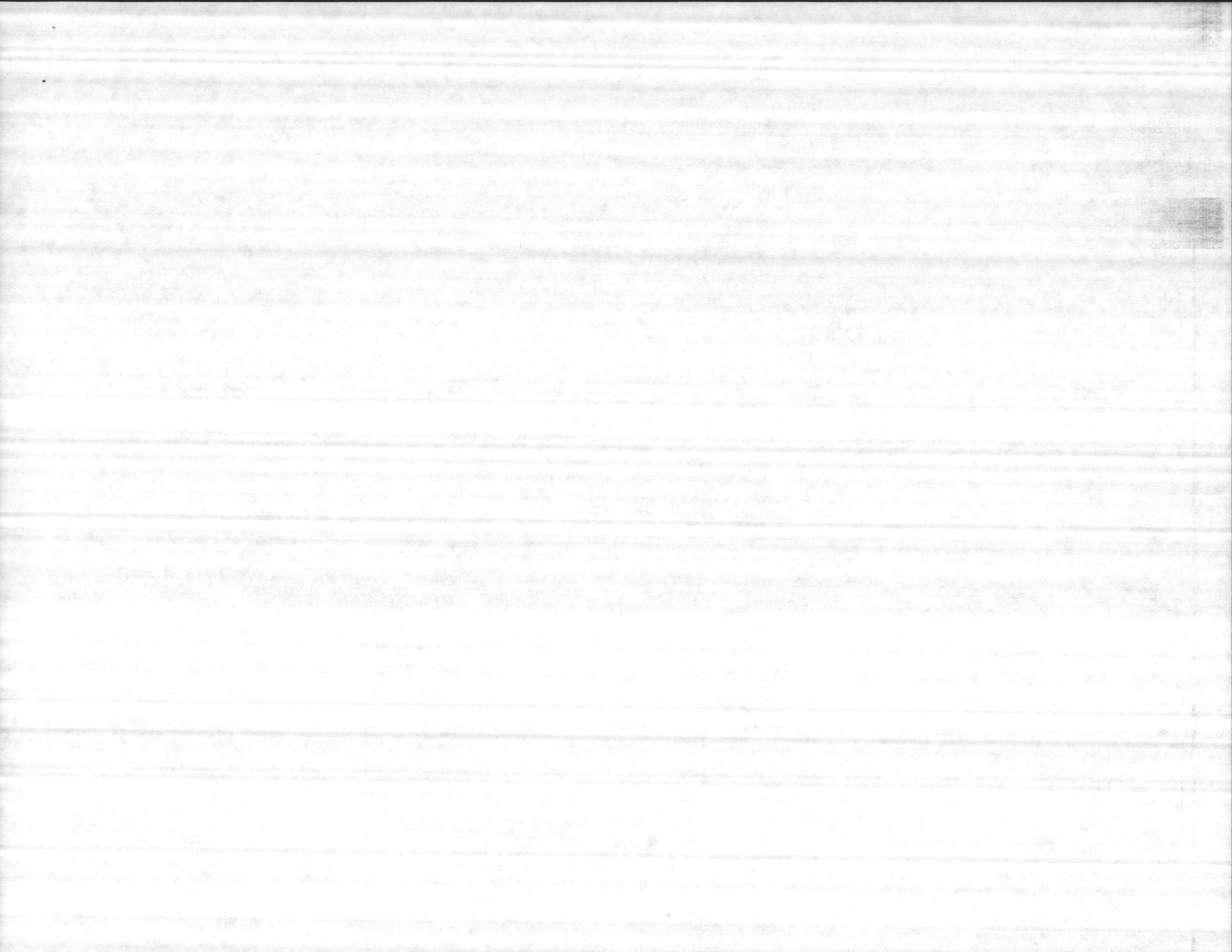
Assume responsibility for the following equipment and services: teletype maintenance, cryptographic equipment maintenance, ground radio equipment maintenance.

Provide/maintain public address systems in appropriated fund activities.

Comply with MCB Camp Lejeune directives and directives of higher headquarters to obtain Comm-Elect maintenance services.

Operate MCAS(H) New River communication center.

Maintain electronic-communication equipment necessary to air operations such as radar, navigation aids and radios.



Support Function

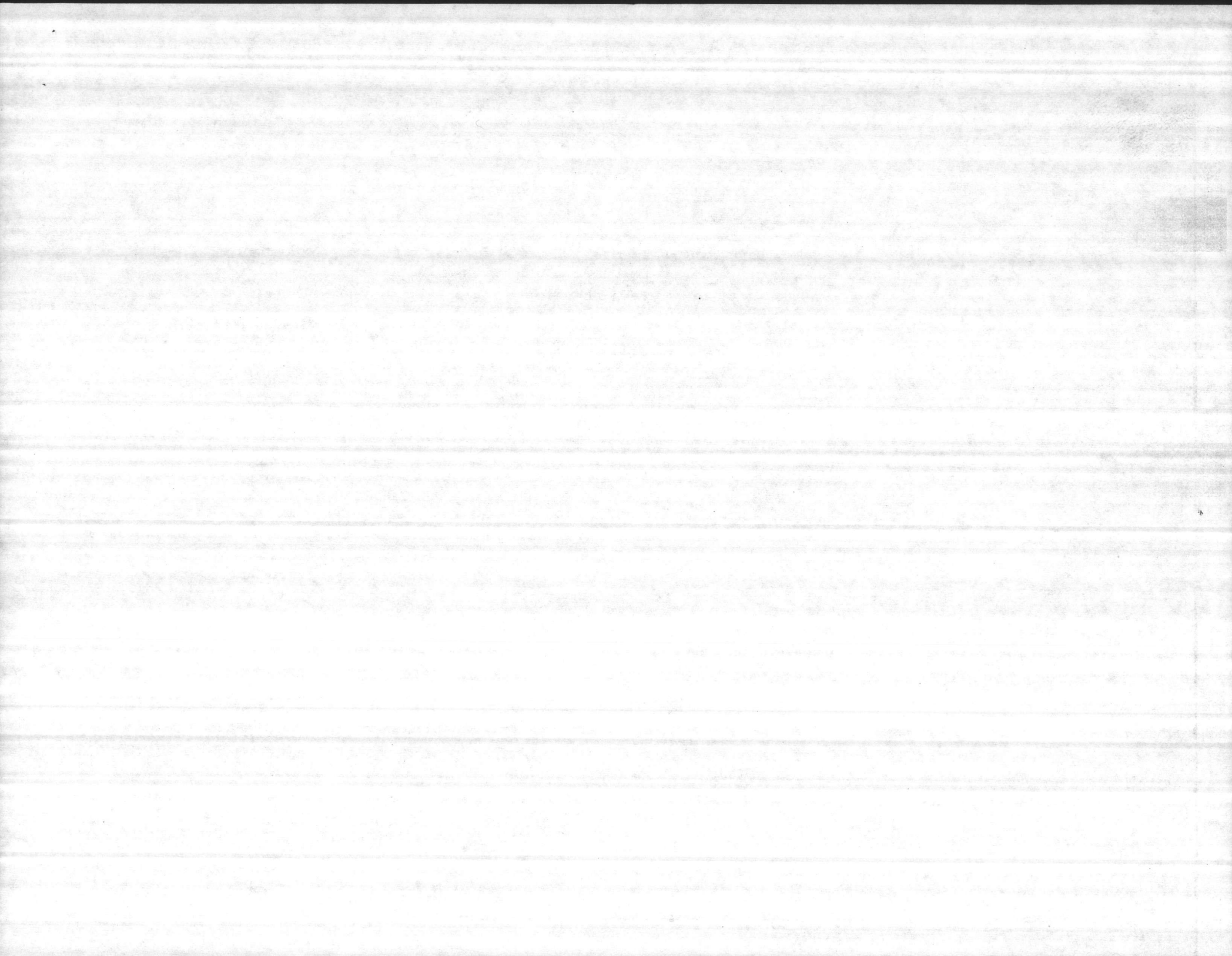
MCB Camp Lejeune

MCAS (H) New River

Off-duty Education

Provide management and coordination of off-duty education programs at all levels, to include a high school diploma program, and college undergraduate and graduate programs as needed. Establish and supervise operation of special education facilities, such as learning centers, testing facilities and classrooms, to serve the personnel at the contiguous locations--New River and Camp Geiger. Provide an officer who will be a deputy for the purpose of approving request for tuition assistance for personnel at the contiguous locations--New River and Camp Geiger.

Coordinate as required.



SECTION II - OTHER MATTERS OF MUTUAL INTEREST AS SPECIFIED

FUNCTION

Security and Law
Enforcement

MCB Camp Lejeune

Provide military police support for MCB Camp Lejeune, to include Camp Geiger and "A" Street to its Curtis Road intersection. Permit normal pursuit privileges aboard MCB to MCAS(H) military police vehicles.

Provide the CO, MCAS(H) with a copy of the Camp Geiger Military Police Desk Blotter on the first working day following the day on which the blotter was opened.

Provide Police Information Network (PIN) service to MCAS(H) Provost Marshal.

Provide OCR input for the combined vehicle registration roster for MCAS(H) vehicles based on MCAS(H) input. Provide MCAS(H) Provost Marshal with decals for MCB vehicles registered by MCAS(H).

Notate the combined registration roster to reflect the results of the MCAS(H) Traffic Board; honor said results in the same manner as if MCB Traffic Board had adjudged the cases.

MCAS(H) New River

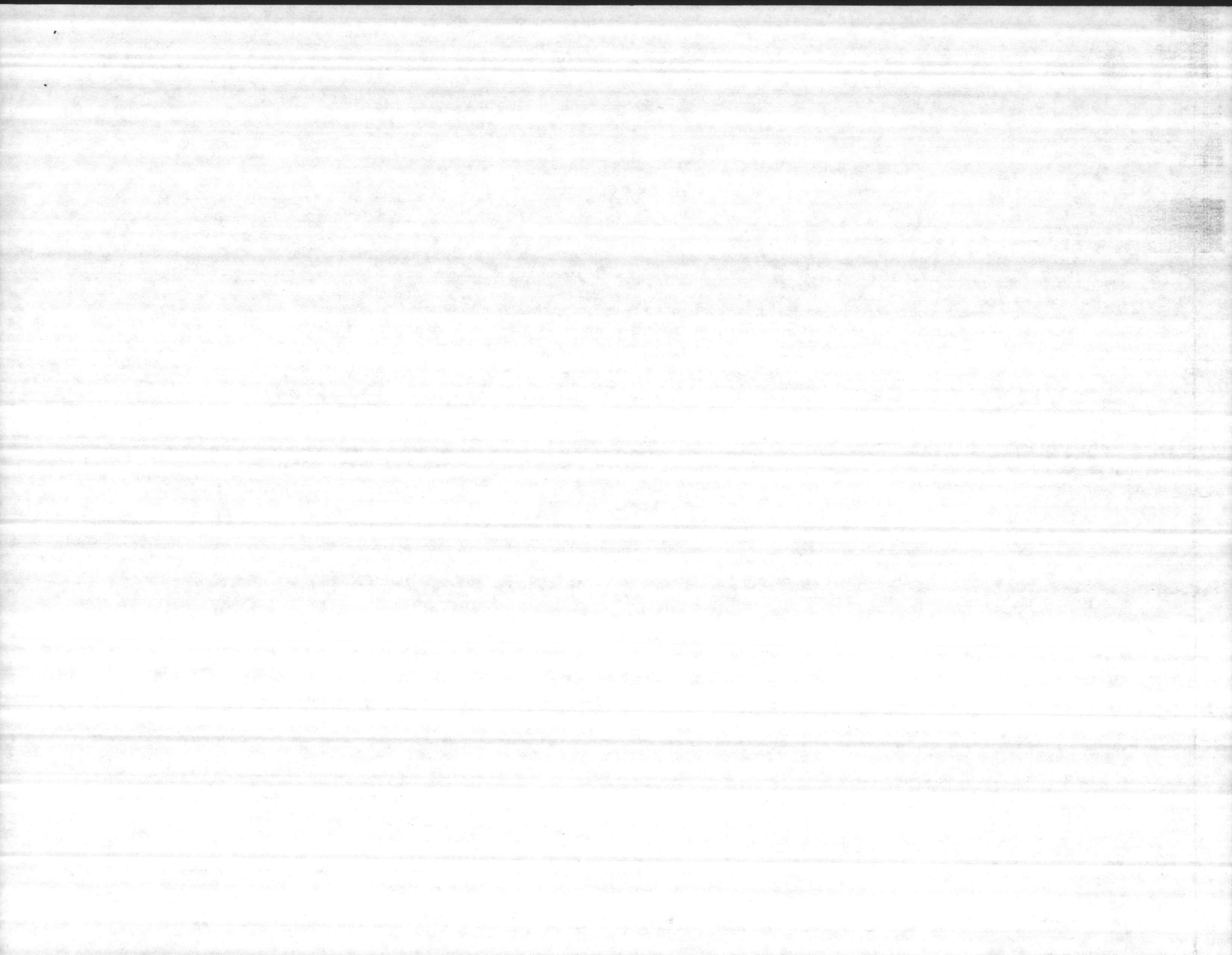
Provide military police support for MCAS(H) New River to include all of Curtis Road to the intersection of Highway 17, the Geiger Trailer Park, and DeLalio School. Permit normal pursuit privileges aboard MCAS(H) to MCB military police vehicles.

Provide the CO, MCB with copies of the MCAS(H) Military Police and CID Desk Blotters on the first working day following the day on which the blotter was opened.

Provide MCB Provost Marshal with one corporal 5811 in return for PIN service.

Register vehicles for MCB utilizing decals furnished by MCB Provost Marshal. Provide required registration information to MCB Provost Marshal for OCR input.

Operate a Traffic Board that parallels that of MCB in organization and furnish MCB Provost Marshal the results of the Board. Honor MCB Traffic Board results regarding suspensions, revocations, etc., as if the MCAS(H) Board had adjudged the cases.



Security and Law
Enforcement (contd)MCB Camp Lejeune

Honor all temporary and visitor passes (less temporary motorcycle passes) issued by MCAS(H).

Investigate all accidents involving any U. S. Government vehicle in the civilian jurisdiction immediately adjacent to MCB Camp Lejeune and MCAS(H) New River. Furnish copies of investigations involving MCAS(H) vehicles to MCAS(H).

Provide facilities at Animal Shelter for boarding pets picked up by MCAS(H) and not returned to owners.

Furnish court liaison and shore patrol support for MCAS(H) in City of Jacksonville.

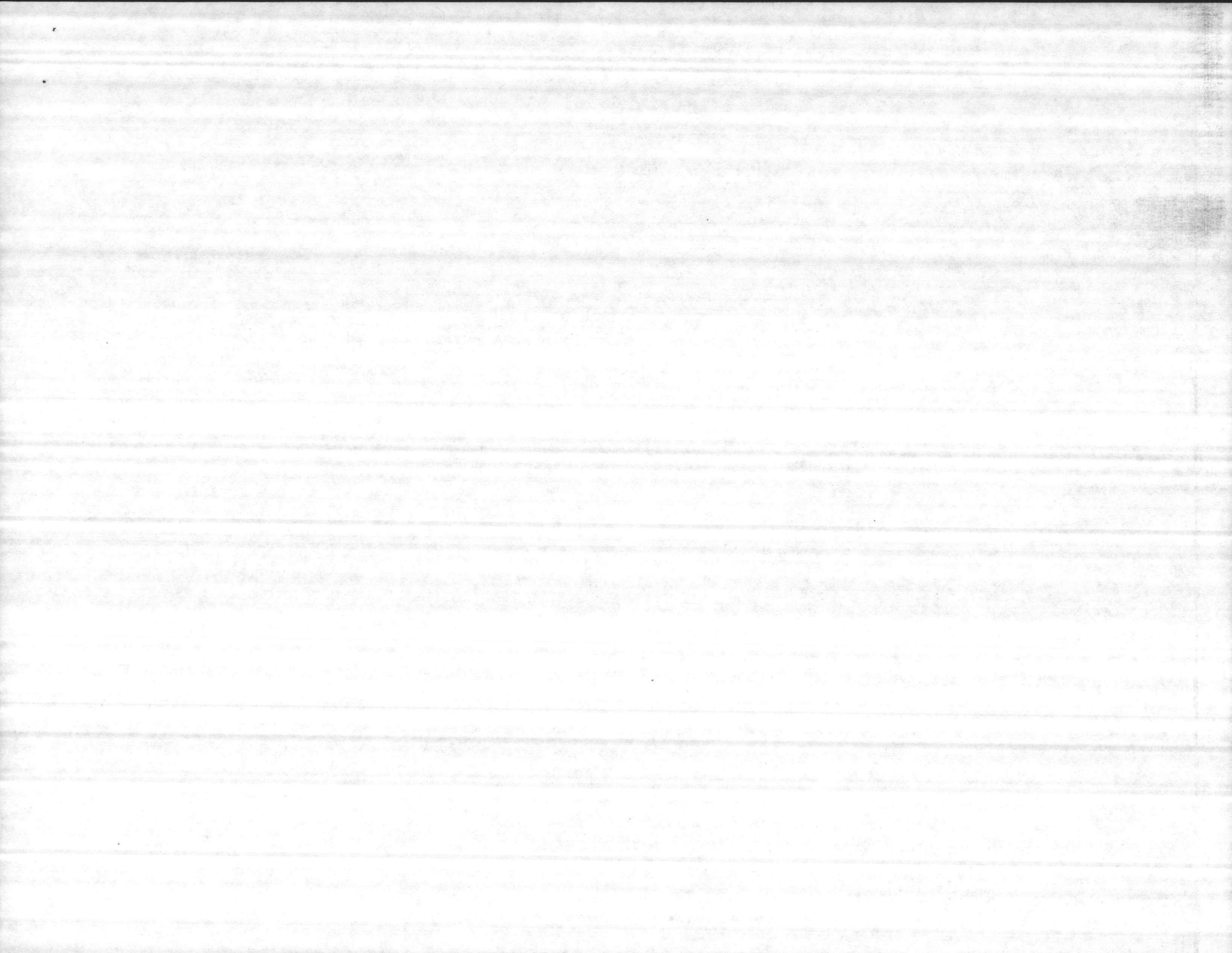
MCAS(H) New River

Utilize the same criteria and issue the same type visitor and temporary passes as does MCB. Honor all temporary and visitor passes issued by MCB.

Furnish MCB with copies of all investigations of motor vehicle accidents occurring on MCAS(H).

Contribute to boarding cost of MCAS(H) pets held by Base Animal Shelter at rate of one pound of dog food per day per pet.

Provide MCB Provost Marshal with one sergeant or below 5811 in return for court liaison and shore patrol support.



FUNCTION

5. Data Processing
Services

MCB Camp Lejeune

Provide indirect ADP support through the MCB system manager when the MCAS(H) data are a subset of the larger MCB system and data base.

Provide backup support for the MCAS(H) Mohawk data communication system printer. (COMCABEAST ltr DP-mds/KES over 5230 of 3 Feb 1976).

MCAS(H) New River

Request system modifications, routine reports, and special extracts through the MCB system manager.

Provide ASC #2 with data necessary to execute backup support agreement.

