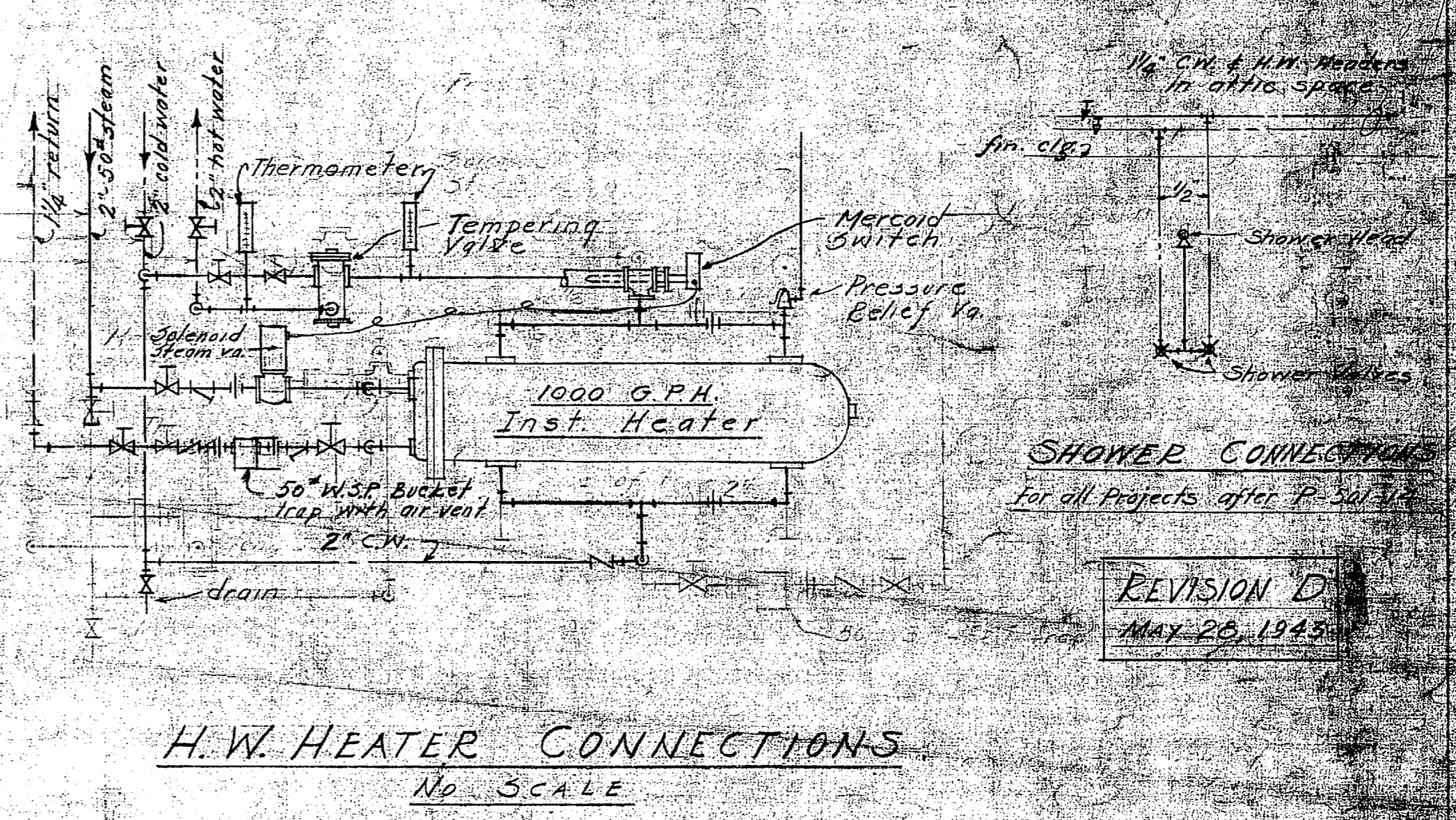


REVISION A
APRIL 1, 1943

REVISION C
APRIL 19, 1943

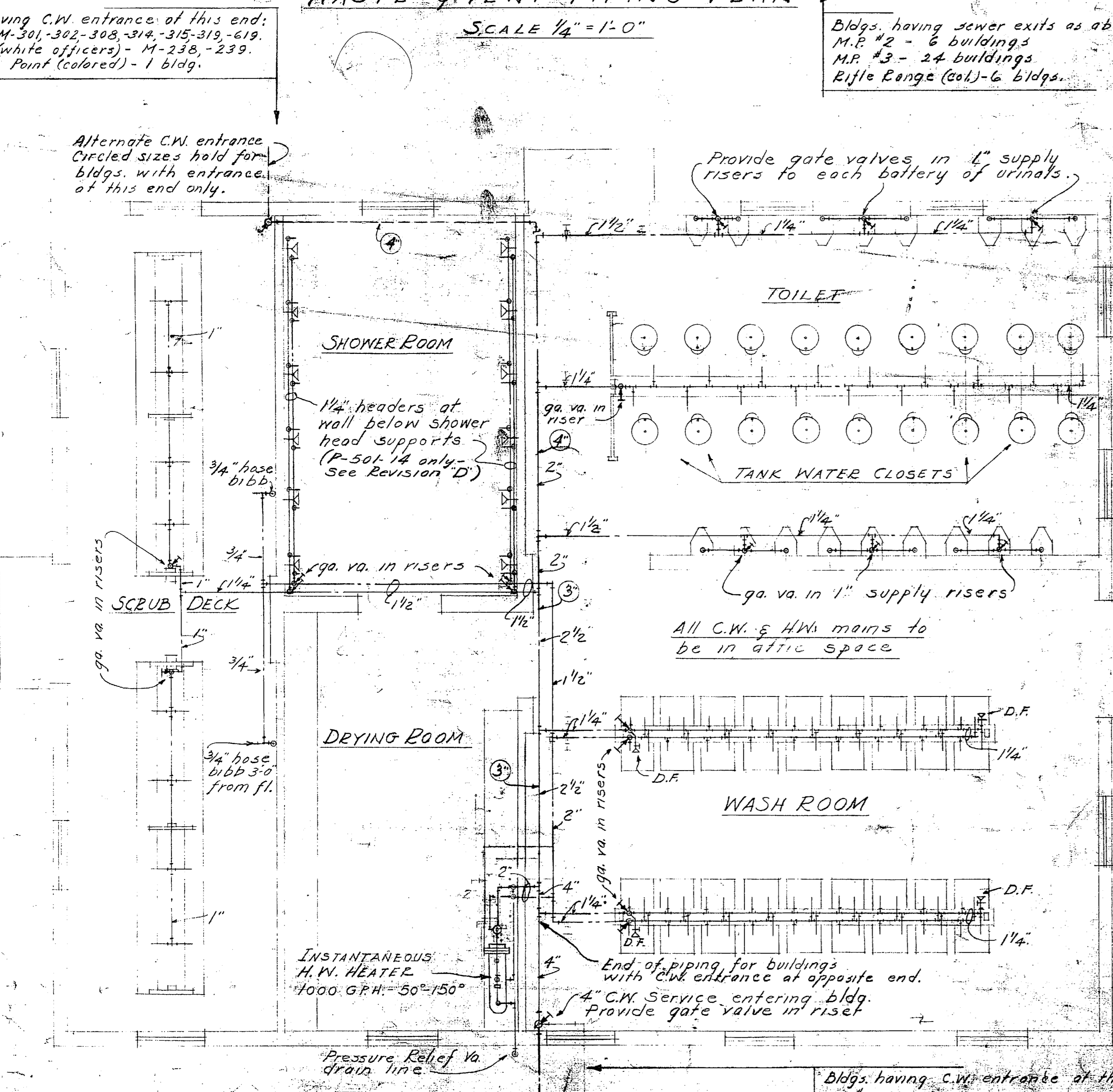
HEATING PLAN
SCALE 1/4" = 1'-0"

REVISION D
MAY 26, 1943



H.W. HEATER CONNECTIONS
NO SCALE

WASTE & VENT PIPING PLAN
SCALE 1/4" = 1'-0"



C.W. & H.W. PIPING PLAN
SCALE 1/4" = 1'-0"

REVISION C
APRIL 19, 1943

ALTERNATE WASTE & VENT PIPING PLAN

Buildings having sewer exits as above:
M.P. 2 - 5 buildings
M.P. 3 - 24 buildings
Rifle Range (col.) - 6 bldgs.

Buildings having C.W. entrance at this end:
M.P. 2 - M-205, 206, 207, 208, 209, 210
M.P. 3 - M-401, 402, 403, 404, 405, 410
M-501, 502, 503, 504, 510, 520
M-601, 602, 610, 613, 620
Rifle Range (col.) - RP-211, 212, 213, 215, 216, 217

THIS DRAWING ALSO SHALL BE USED FOR:
PROJECT NO. P-1300-2 BILL RANGE COURSE CAMP CONDOR'S
NO. P-1100-2 M.P. 2 WHITE OFFICES
NO. P-1101-2 HUMPHORD POINT #3
NO. P-1208-2 PARADISE POINT COLORED TROOP

| | |
|-------------------------------------|--------------|
| DRAWN BY | W.W.K. |
| TRACED BY | W.W.K. |
| CHECKED BY | W.W.K. |
| APPROVED BY | W.W.K. |
| DATE | FEB. 9, 1943 |
| SCALE | AS SHOWN |
| T. & D. DRAWING NO. | 248212 |
| CONTRACTOR'S CONTRACT NO. | 15 |
| MARINE BARRACKS - NEW RIVER | |
| BUREAU OF YARDS AND DOCKS - ALABAMA | |
| WASH ROOM FOR ENLISTED | |
| HUMPHORD POINT CAMP | |
| PLUMBING | |

M-205

W-2-11