

FILE FOLDER

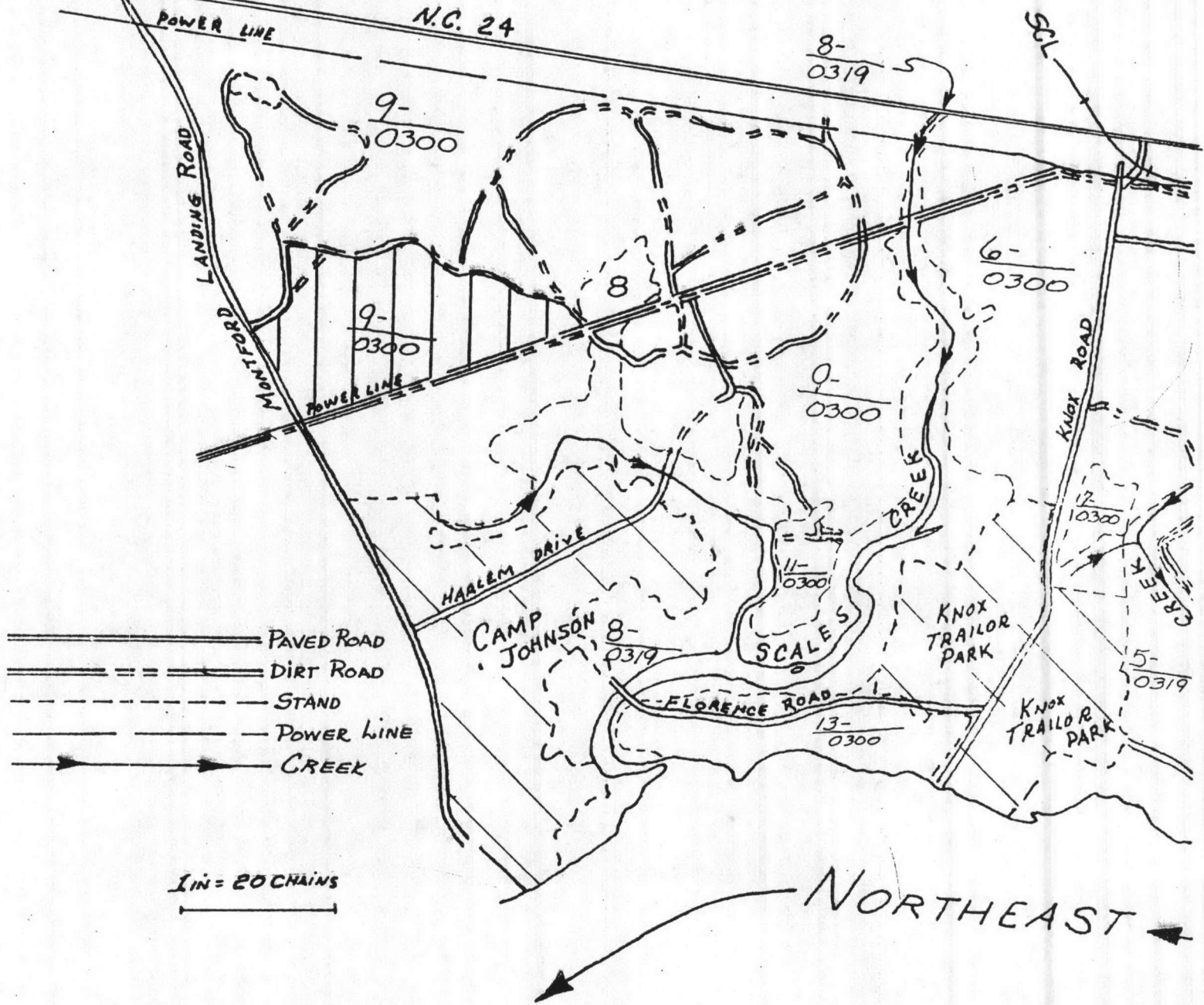
DESCRIPTION ON TAB:

Site Preparation

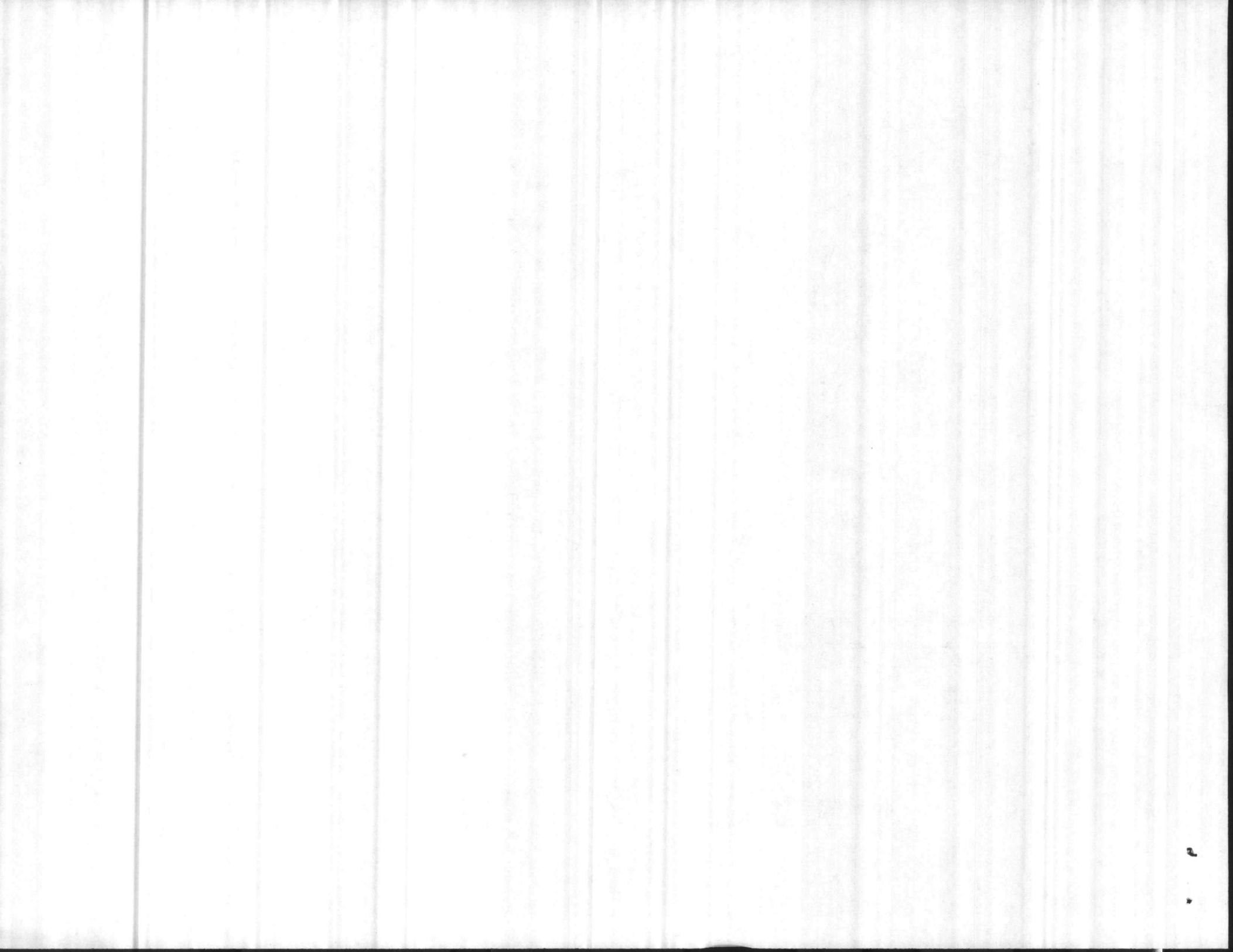
- Outside/inside of actual folder did not contain hand written information**
- Outside/inside of actual folder did contain hand written information**
***Scanned as next image**

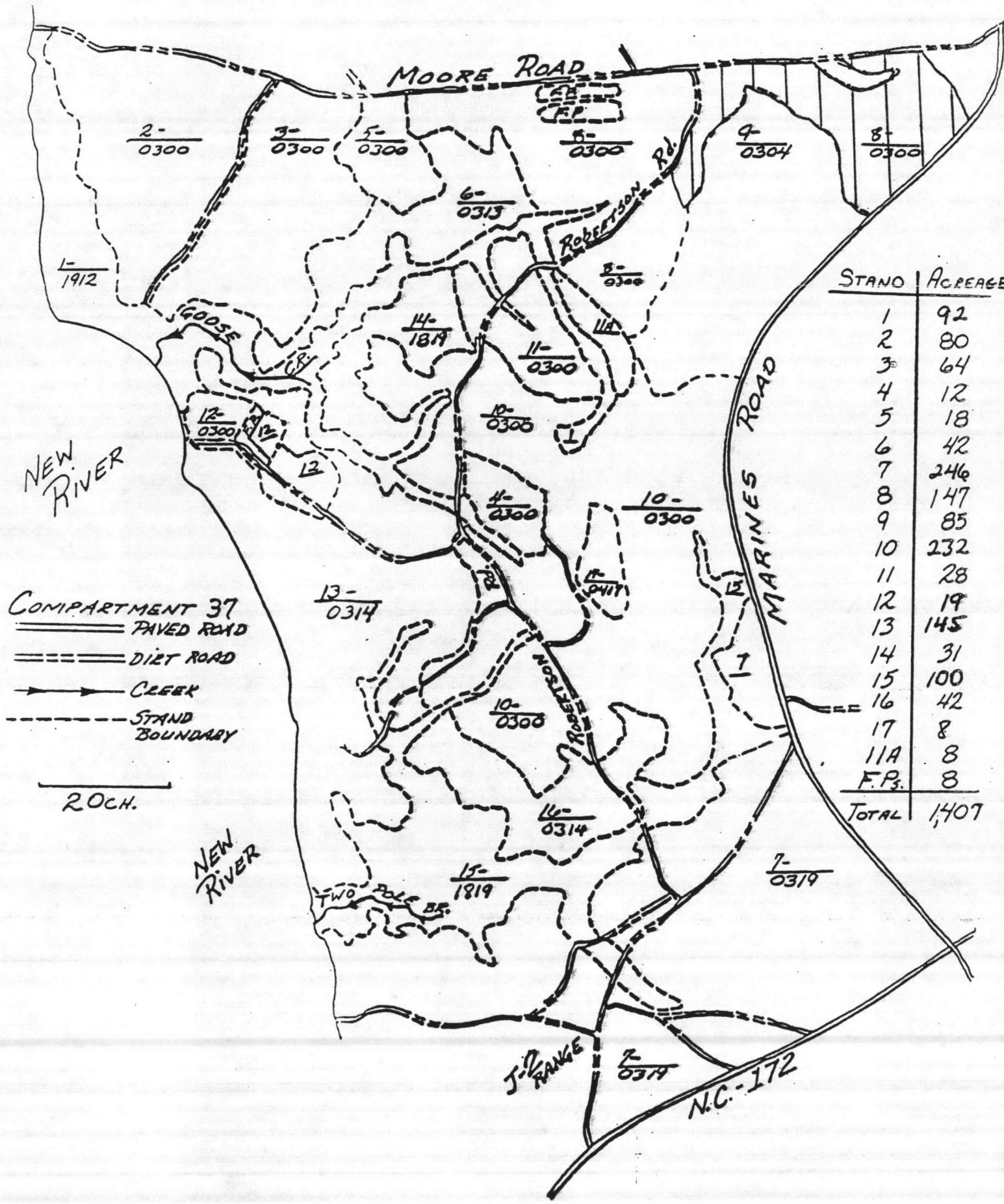
COMPARTMENT 1

TO JACKSONVILLE



Site Preparation



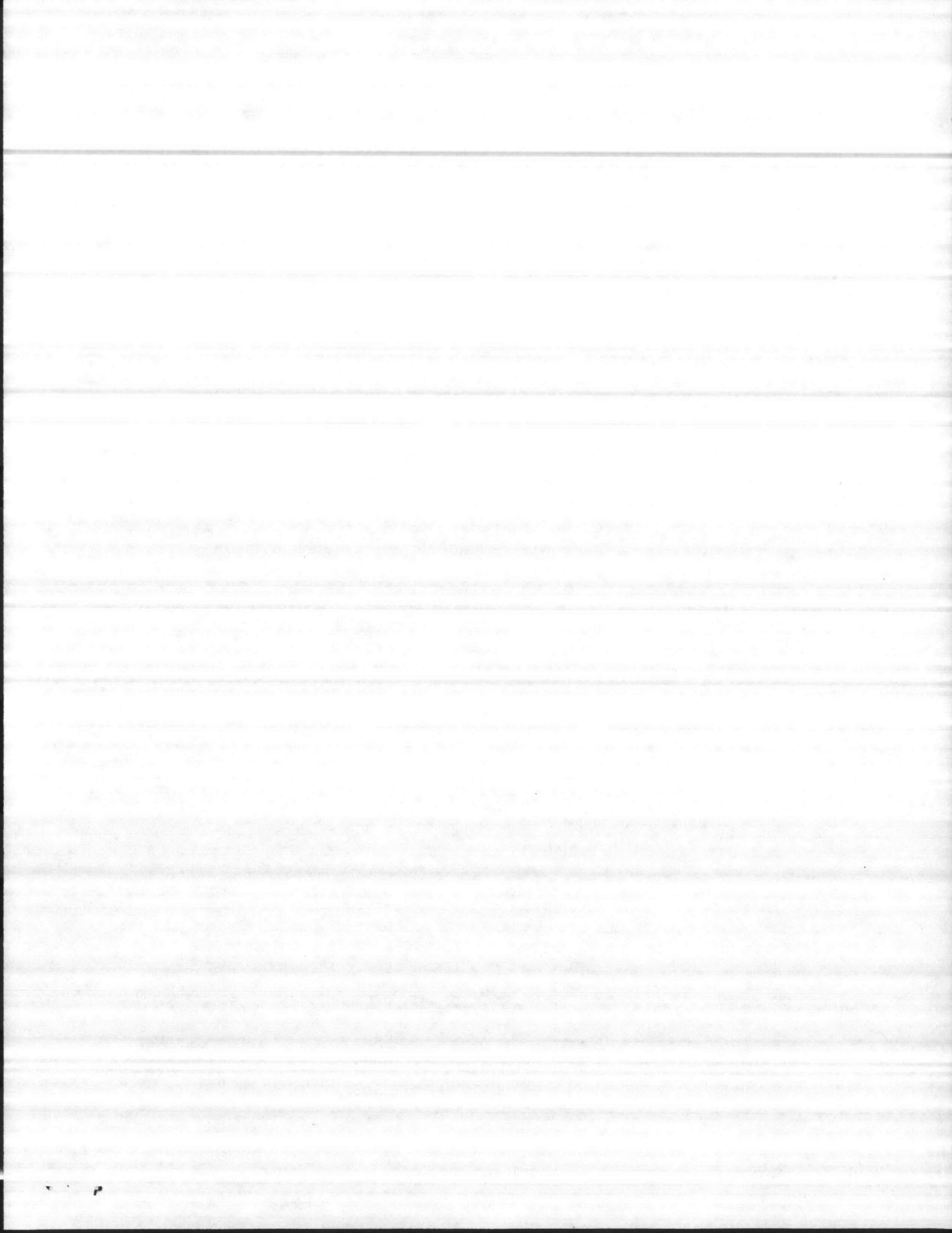


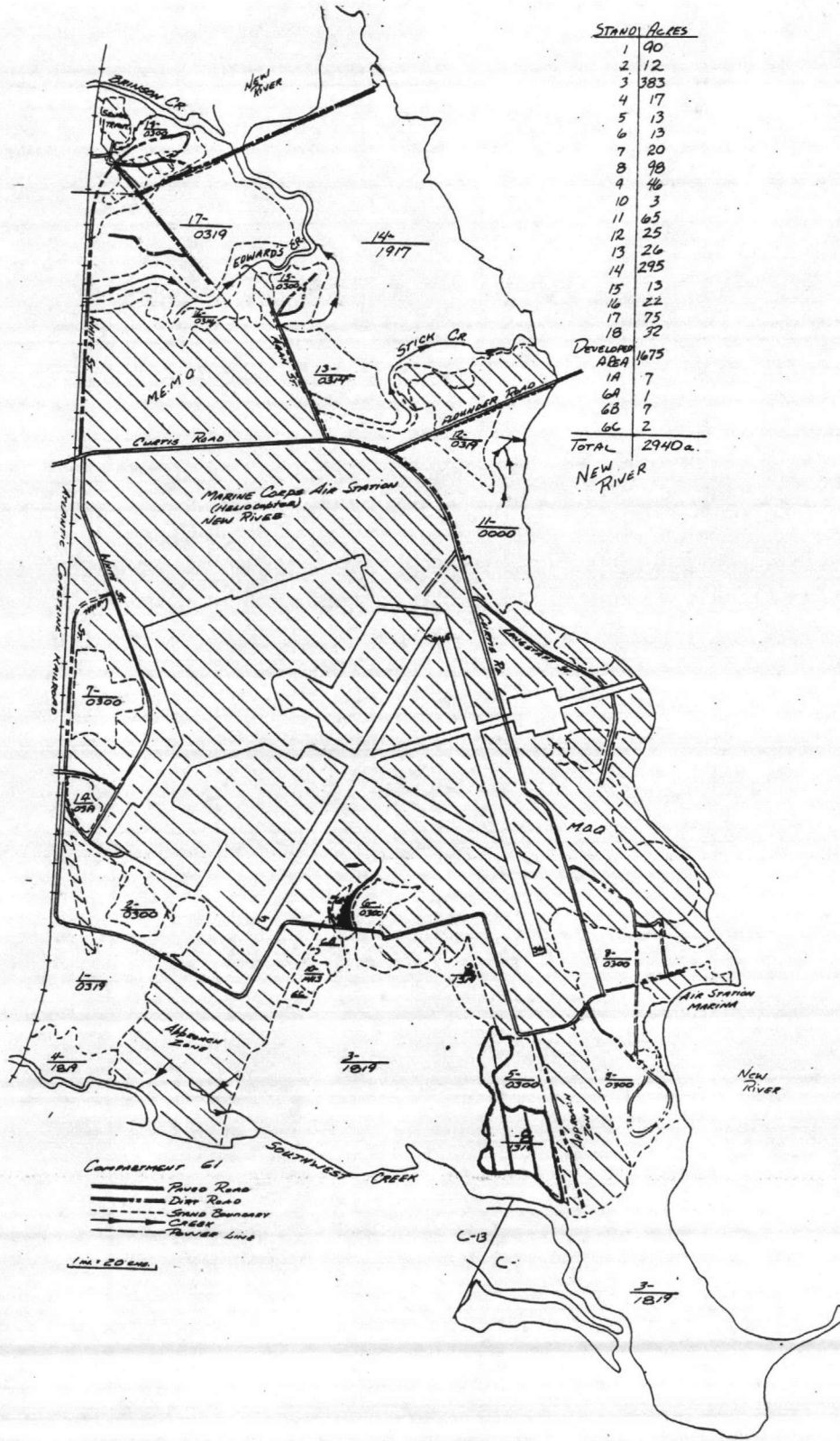
| STAND | ACREAGE |
|--------------|--------------|
| 1 | 92 |
| 2 | 80 |
| 3 | 64 |
| 4 | 12 |
| 5 | 18 |
| 6 | 42 |
| 7 | 246 |
| 8 | 147 |
| 9 | 85 |
| 10 | 232 |
| 11 | 28 |
| 12 | 19 |
| 13 | 145 |
| 14 | 31 |
| 15 | 100 |
| 16 | 42 |
| 17 | 8 |
| 11A | 8 |
| F.P. | 8 |
| TOTAL | 1,407 |

COMPARTMENT 37
 == PAVED ROAD
 === DIRT ROAD
 → CREEK
 - - - STAND BOUNDARY

200 FT.

N.C.-172





| STAND | ACRES |
|-----------|--------|
| 1 | 90 |
| 2 | 12 |
| 3 | 383 |
| 4 | 17 |
| 5 | 13 |
| 6 | 13 |
| 7 | 20 |
| 8 | 98 |
| 9 | 46 |
| 10 | 3 |
| 11 | 65 |
| 12 | 25 |
| 13 | 26 |
| 14 | 295 |
| 15 | 13 |
| 16 | 22 |
| 17 | 75 |
| 18 | 32 |
| DEVELOPED | |
| ABBA | 1675 |
| 1A | 7 |
| 6A | 1 |
| 6B | 7 |
| 6C | 2 |
| TOTAL | 2940a. |

NEW RIVER

