

ENVIRONMENTAL CHEMISTRY & MICROBIOLOGY LABORATORY REPORT
CHEMICAL ANALYSIS - WATER TREATMENT PLANTS

MCBCL 11330/3 (REV. 11-87)

DATE COLLECTED

12-29-87

DATE(S) ANALYZED

12-29-87

PARAMETER (UNITS)	PLANT	HADNOT	MCAS	HOLCOMB	COURTHOUSE	RIFLE	ONSLow		
		POINT 04-67-041	NEW RIVER 04-67-042	BLVD 04-67-043	BAY 04-67-046	RANGE 04-67-047	BEACH 04-67-048		
PH-LABORATORY		8.2	8.6	8.4	8.3	8.1	7.5		
STABILITY		+0.4	+0.3	+0.5	+0.1	0	-0.3		
PHENOLTHALEIN ALKALINITY (PPM)		0	12	4	8	0	0		
METHYL ORANGE ALKALINITY (PPM)		68	146	70	180	164	178		
CARBONATES AS CaCO ₃ (PPM)		0	24	8	16	0	0		
BICARBONATES AS CaCO ₃ (PPM)		68	122	62	164	164	178		
CHLORIDES AS Cl (PPM)		12	70	26	20	34	26		
HARDNESS AS CaCO ₃ (PPM)		96	68	72	50	42	62		
IRON AS FE (PPM)		AA	DOWN						
FLOURIDE (PPM)	AM	1.14	0.72	0.91	0.14	0.12	0.16		
	PM	1.27							
TURBIDITY (NTUS)	AM	/	METER DOWN	/					
	PM	/							
CHLORINE RESIDUAL (PPM)		1.1	1.1	1.1	1.5	1.0	1.2		

REMARKS:

COPY TO:

- UTIL DIR, BMD _____
 WATER TREATMENT, UTIL DIV. BMD
 PMU, NAVHOSP PMU, MCAS-NR
 DIVISION OF HEALTH SERVICES
 N.C. DEPT OF HUMAN RESOURCES
 NREAD FILE (ATTACH WKST)

REPORT DATE:

12-29-87

REPORT PREPARED BY:

Carol Shous



ENVIRONMENTAL CHEMISTRY & MICROBIOLOGY LABORATORY REPORT
CHEMICAL ANALYSIS - WATER TREATMENT PLANTS

MCBCL 11330/3 (REV. 11-87)

DATE COLLECTED

12-21-87

DATE(S) ANALYZED

12-21-87

PARAMETER (UNITS)	PLANT	HADNOT POINT 04-67-041	MCAS NEW RIVER 04-67-042	HOLCOMB BLVD 04-67-043	COURTHOUSE BAY 04-67-046	RIFLE RANGE 04-67-047	ON SLOW BEACH 04-67-048			
PH-LABORATORY		92	86	84	82	83	74			
STABILITY		+0.3	+0.4	+0.4	0	+0.2	-0.5			
PHENOLTHALEIN ALKALINITY (PPM)		0	10	4	0	6	0			
METHYLORANGE ALKALINITY (PPM)		72	142	68	160	158	168			
CARBONATES ASCACO ₃ (PPM)		0	20	8	0	12	0			
BICARBONATES ASCACO ₃ (PPM)		72	122	60	160	146	168			
CHLORIDES ASCI (PPM)		14	70	18	22	36	24			
HARDNESS ASCACO ₃ (PPM)		76	54	72	60	48	54			
IRON AS FE (PPM)		Down	_____					7		
FLOURIDE (PPM)	AM / PM	0.91 / 1.11	0.67	0.94 / 1.00	0.16	0.11	0.16			
TURBIDITY (NTUS)	AM / PM	Down /	_____					7		
CHLORINE RESIDUAL (PPM)		1.0	1.0	1.2	1.3	1.0	1.4			

REMARKS:

O.B. Pond Ph 7.8

COPY TO:

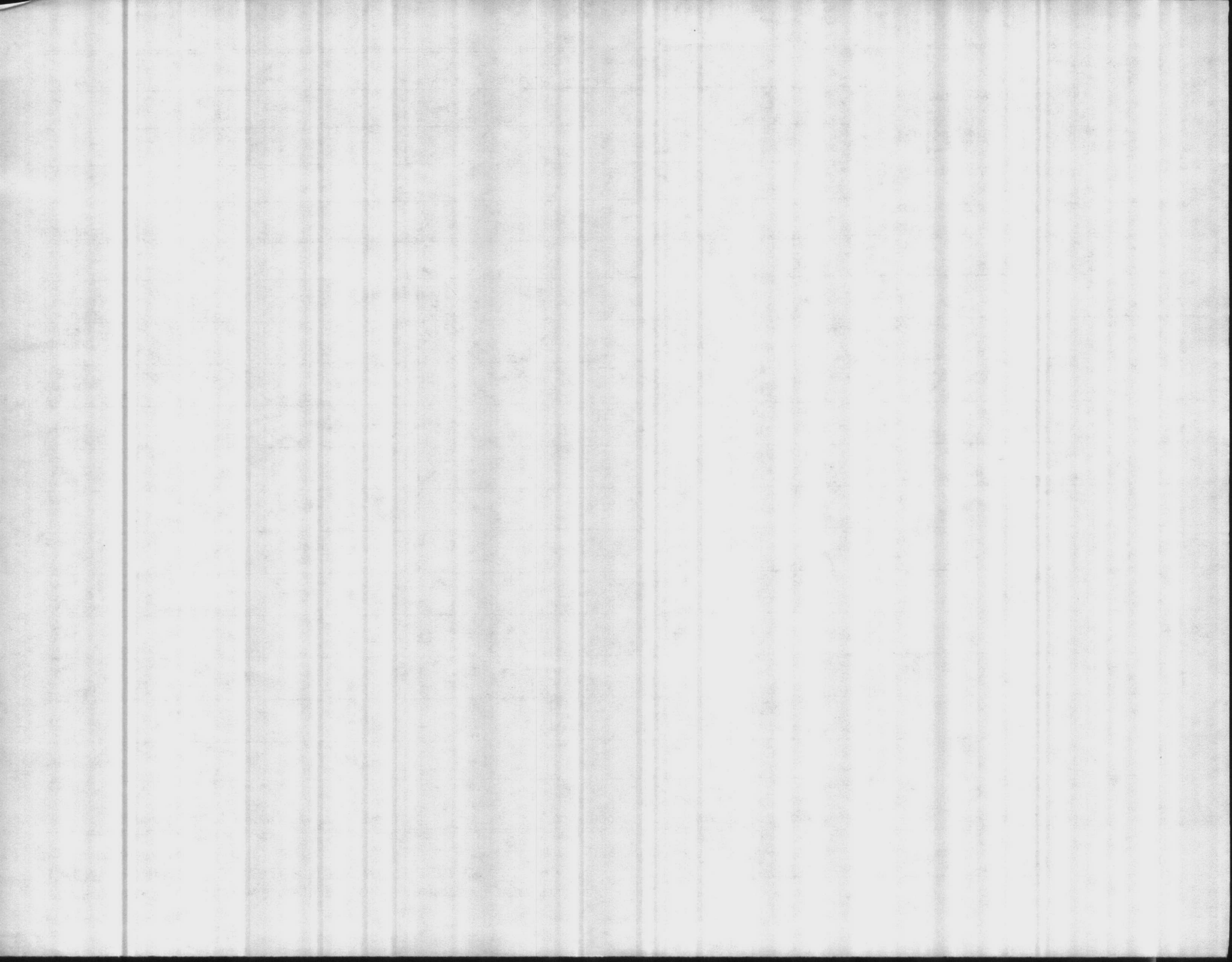
- UTIL DIR, BMD
- _____
- WATER TREATMENT, UTIL DIV. BMD
- PMU, NAVHOSP
- PMU, MCAS-NR
- DIVISION OF HEALTH SERVICES
- N.C. DEPT OF HUMAN RESOURCES
- NREAD
- FILE (ATTACH WKST)

REPORT DATE:

12-21-87

REPORT PREPARED BY:

Robert G. Dwyer



ENVIRONMENTAL CHEMISTRY & MICROBIOLOGY LABORATORY REPORT
CHEMICAL ANALYSIS - WATER TREATMENT PLANTS

MCBCL 11330/3 (REV. 11-87)

DATE COLLECTED

12-8-87

DATE(S) ANALYZED

12-8-87

PARAMETER (UNITS)	PLANT	HADNOT POINT 04-67-041	MCAS NEW RIVER 04-67-042	HOLCOMB BLVD 04-67-043	COURTHOUSE BAY 04-67-046	RIFLE RANGE 04-67-047	ONSLow BEACH 04-67-048		
PH-LABORATORY		8.2	8.4	8.6	8.2	8.1	7.3		
STABILITY		+0.3	+0.2	+0.6	+0.2	+0.1	-0.4		
PHENOLTHALEIN ALKALINITY (PPM)		4	10	6	0	0	0		
METHYLORANGE ALKALINITY (PPM)		80	140	60	164	160	166		
CARBONATES AS CaCO ₃ (PPM)		8	20	12	0	0	0		
BICARBONATES AS CaCO ₃ (PPM)		72	120	48	164	160	166		
CHLORIDES AS Cl (PPM)		8	54	12	8	36	14		
HARDNESS AS CaCO ₃ (PPM)		80	54	62	48	52	58		
IRON AS Fe (PPM)		Down							
FLOURIDE (PPM)	AM / PM	0.16 / 0.12	0.64	1.21 / 1.14	0.16	0.11	0.15		
TURBIDITY (NTUS)	AM / PM	Down							
CHLORINE RESIDUAL (PPM)		1.0	1.1	1.4	1.3	1.0	1.1		

REMARKS:

O.B. Pond Ph = 8.0

COPY TO:

- UTIL DIR, BMD
- _____
- WATER TREATMENT, UTIL DIV. BMD
- PMU, NAVHOSP
- PMU, MCAS-NR
- DIVISION OF HEALTH SERVICES
- N.C. DEPT OF HUMAN RESOURCES
- NREAD
- FILE (ATTACH WKST)

REPORT DATE:

12-8-87

REPORT PREPARED BY:

Robert G. Dwyer

1861
1862
1863
1864
1865
1866
1867
1868
1869
1870
1871
1872
1873
1874
1875
1876
1877
1878
1879
1880
1881
1882
1883
1884
1885
1886
1887
1888
1889
1890
1891
1892
1893
1894
1895
1896
1897
1898
1899
1900

ENVIRONMENTAL CHEMISTRY & MICROBIOLOGY LABORATORY REPORT
 CHEMICAL ANALYSIS - WATER TREATMENT PLANTS
 MC8CL 11330/3 (REV 7-87)

DATE COLLECTED: 12-1-87
 DATE(S) ANALYZED: 12-1-87

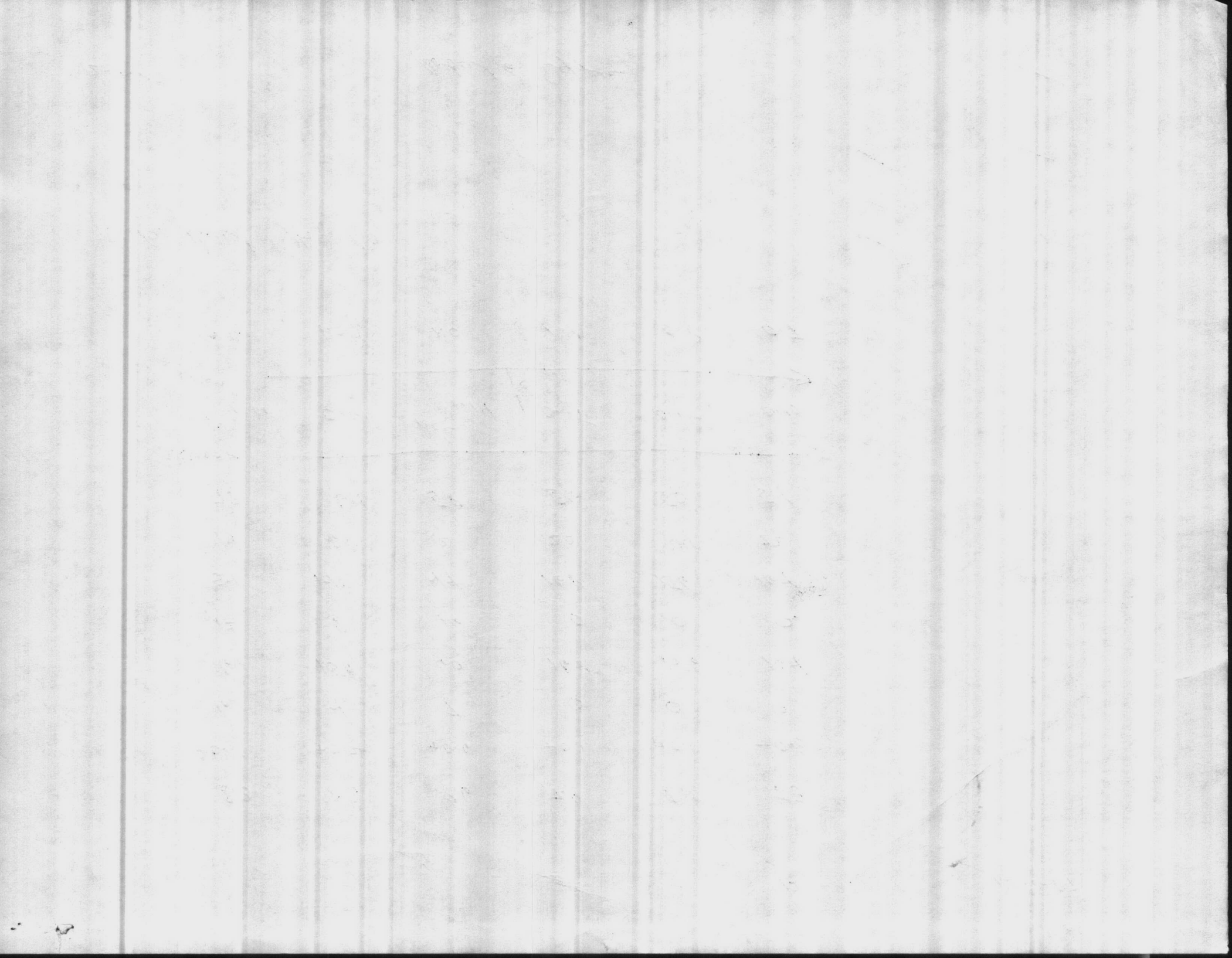
PLANT PARAMETER (UNITS)	HADNOT POINT 04-67-041	MCAS NEW RIVER 04-67-042	HOLCOMB BLVD 04-67-043	COURTHOUSE BAY 04-67-046	RIFLE RANGE 04-67-047	ONSLow BEACH 04-67-048				
pH-LABORATORY	8.3	8.3	8.6	7.9	8.0	7.3				
STABILITY	+0.5	+0.2	+0.6	+0.1	+0.1	-0.3				
PHENOLTHALEIN ALKALINITY (PPM)	6	4	8	0	0	0				
METHYL ORANGE ALKALINITY (PPM)	66	150	60	168	156	164				
CARBONATES AS CaCO ₃ (PPM)	12	8	16	0	0	0				
BICARBONATES AS CaCO ₃ (PPM)	54	142	44	168	156	164				
CHLORIDES AS Cl (PPM)	14	6P	12	20	44	22				
HARDNESS AS CaCO ₃ (PPM)	7P	60	5P	56	50	54				
IRON AS Fe (PPM)	Down	—————→								
FLUORIDE (PPM)	AM	0.80	0.64	1.02	0.15	0.12	0.13			
	PM	0.8P		1.14						
TURBIDITY (NTUS)	AM	Down	—————→							
	PM									
CHLORINE RESIDUAL (PPM)	0.9	1.0	1.0	1.4	0.9	0.7				

REMARKS: O.B. Pond pH 8.0

- COPY TO:
- UTIL Dir, BMD
 - WATER TREATMENT, UTIL Div, BMD
 - PMU, NAYHOSP PMU, MCAS-NR
 - DIVISION OF HEALTH SERVICES
N.C. DEPT OF HUMAN RESOURCES
 - NREAD FILE (ATTACH WKST)

REPORT DATE: 12-1-87

REPORT PREPARED BY: Robert G. Duffner



ENVIRONMENTAL CHEMISTRY & MICROBIOLOGY LABORATORY REPORT
 CHEMICAL ANALYSIS - WATER TREATMENT PLANTS
 MC8CL 11330/3 (REV 7-87)

DATE COLLECTED

12-3-87

DATE(S) ANALYZED

12-3-87

PLANT PARAMETER (UNITS)	HADNOT POINT 04-67-041	MCAS NEW RIVER 04-67-042	HOLCOMB BLVD 04-67-043	COURTHOUSE BAY 04-67-046	RIFLE RANGE 04-67-047	ONSLow BEACH 04-67-048	PP 2630 time 1047		
pH-LABORATORY							8.4		
STABILITY									
PHENOLTHALEIN ALKALINITY (PPM)							6		
METHYL ORANGE ALKALINITY (PPM)							72		
CARBONATES AS CaCO ₃ (PPM)							12		
BICARBONATES AS CaCO ₃ (PPM)							60		
CHLORIDES AS Cl (PPM)							14		
HARDNESS AS CaCO ₃ (PPM)							72		
IRON AS Fe (PPM)							Down		
FLUORIDE (PPM)	AM PM	/	/	/	/	/	0.96		
TURBIDITY (NTUS)	AM PM	/	/	/	/	/	Down		
CHLORINE RESIDUAL (PPM)							0.5		

REMARKS:

COPY TO:

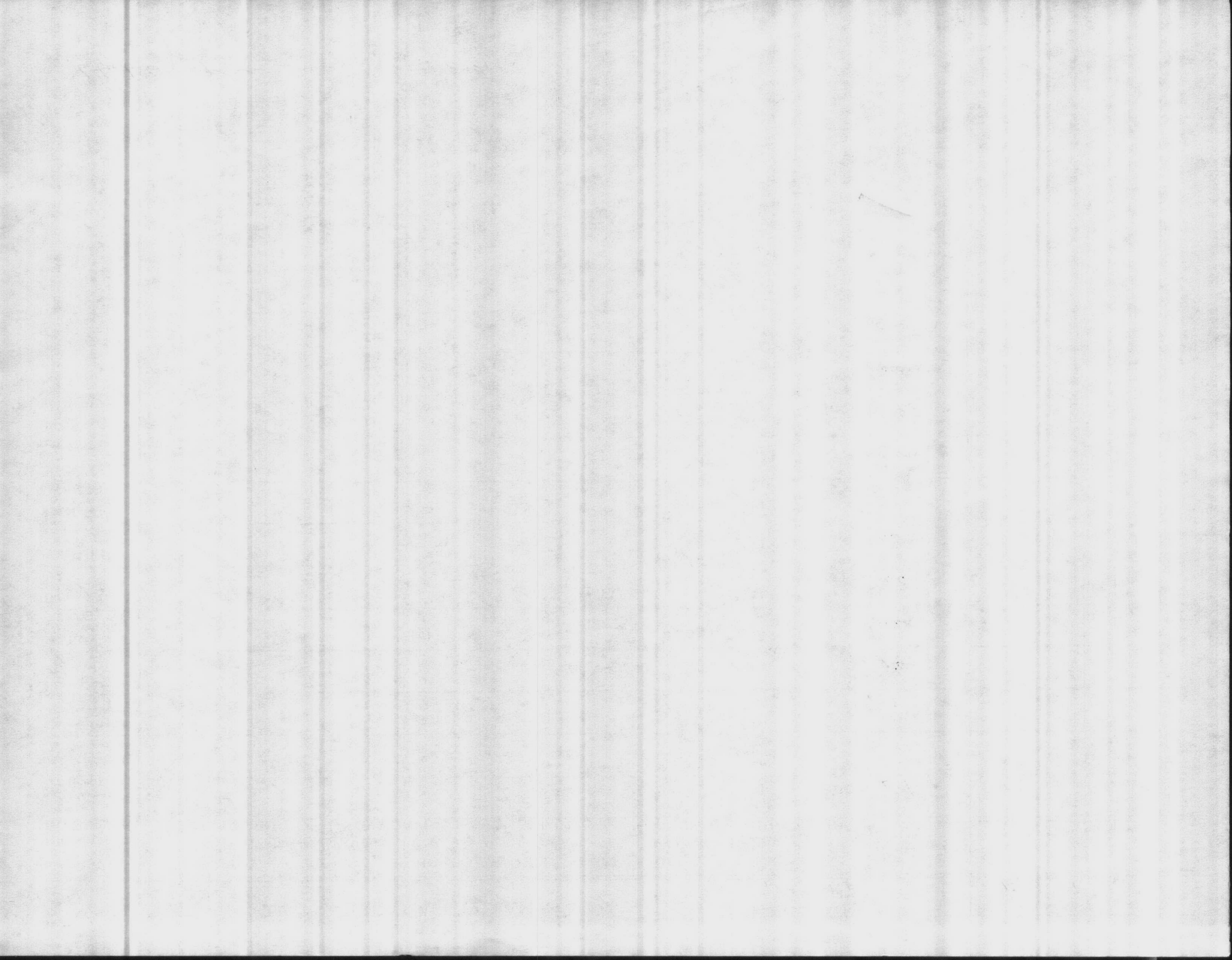
- UTIL Div, BMD _____
 WATER TREATMENT, UTIL Div, BMD
 PMU, NAYHOSP PMU, MCAS-NR
 DIVISION OF HEALTH SERVICES
 N.C. DEPT OF HUMAN RESOURCES
 NREAD FILE (ATTACH WKST)

REPORT DATE:

Robert G. Dwyer

REPORT PREPARED BY:

12-2-87



ENVIRONMENTAL CHEMISTRY & MICROBIOLOGY LABORATORY REPORT
 CHEMICAL ANALYSIS - WATER TREATMENT PLANTS
 MCBCL 11330/3 (REV 7-87)

DATE COLLECTED: 11-17-87
 DATE(S) ANALYZED: 11-17-87

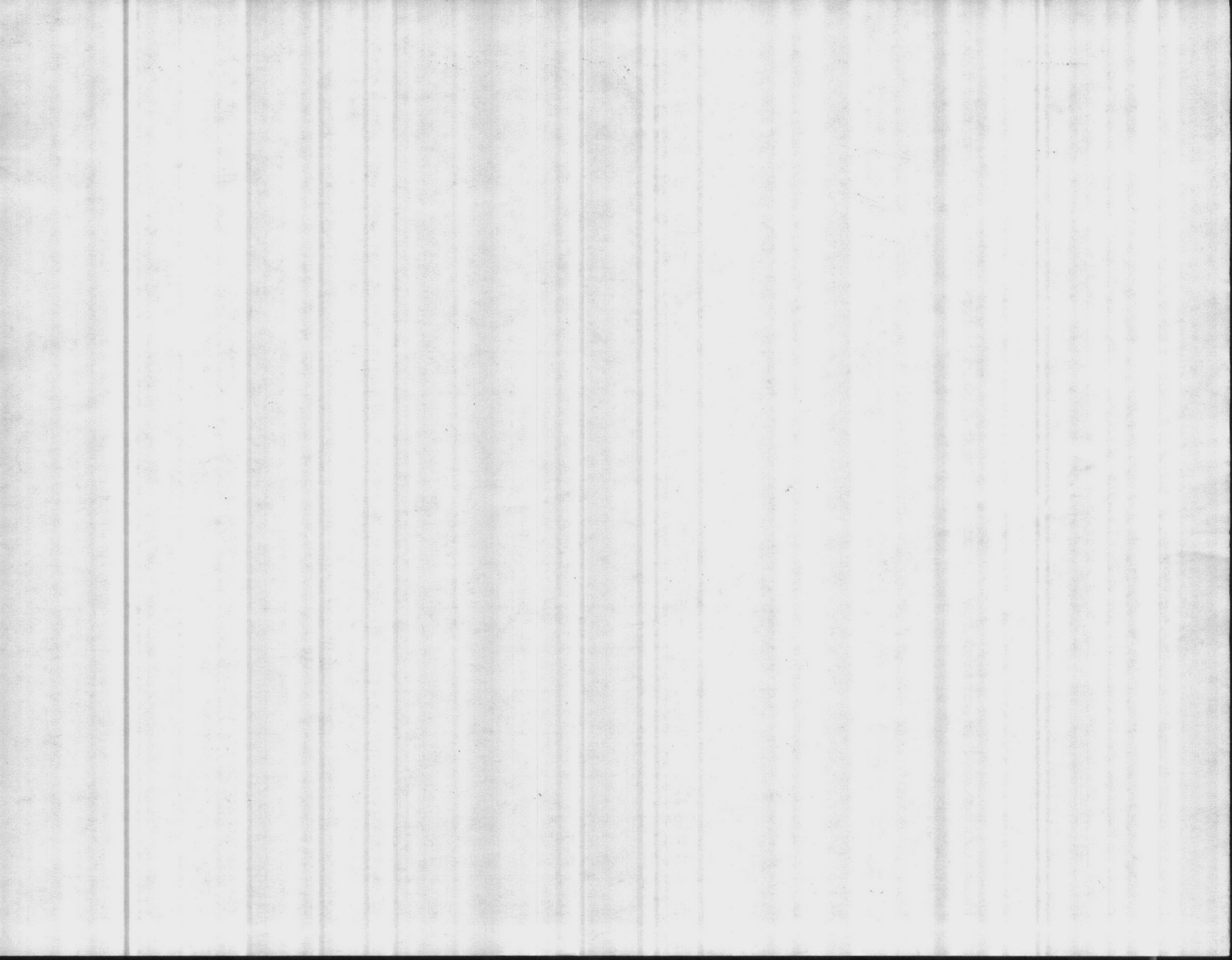
PLANT PARAMETER (UNITS)	HADNOT POINT 04-67-041	MCAS NEW RIVER 04-67-042	HOLCOMB BLVD 04-67-043	COURTHOUSE BAY 04-67-046	RIFLE RANGE 04-67-047	ONSLow BEACH 04-67-048		
pH-LABORATORY	8.1	8.4	8.4	7.9	7.9	7.2		
STABILITY	+0.6	+0.3	+0.6	+0.2	+0.2	-0.3		
PHENOLTHALEIN ALKALINITY (PPM)	2	18	12	0	0	0		
METHYL ORANGE ALKALINITY (PPM)	56	146	58	156	124	160		
CARBONATES AS CaCO ₃ (PPM)	4	36	24	0	0	0		
BICARBONATES AS CaCO ₃ (PPM)	52	110	34	156	124	160		
CHLORIDES AS Cl (PPM)	20	84	20	18	54	22		
HARDNESS AS CaCO ₃ (PPM)	60	66	58	56	64	62		
IRON AS Fe (PPM)	AA	DOWN						
FLUORIDE (PPM)	AM	0.56		0.97				
	PM	0.52	0.64	1.07	0.12	0.10	0.17	
TURBIDITY (NTUS)	AM	0.1		0.3				
	PM	0.1	0.2	0.1	0.1	0.1	0.1	
CHLORINE RESIDUAL (PPM)	1.0	1.0	1.4	1.3	1.0	1.2		

REMARKS:

- COPY TO:
- UTIL Dir, BMD
 - WATER TREATMENT, UTIL Div, BMD
 - PMU, NAVHOSP PMU, MCAS-NR
 - DIVISION OF HEALTH SERVICES
N.C. DEPT OF HUMAN RESOURCES
 - NREAD FILE (ATTACH WKST)

REPORT DATE: 11/17/87

REPORT PREPARED BY: *Carol S. Jones*



ENVIRONMENTAL CHEMISTRY & MICROBIOLOGY LABORATORY REPORT
CHEMICAL ANALYSIS - WATER TREATMENT PLANTS
 MCBC 11330/3 (REV 7-87)



DATE COLLECTED: 11-10-87
 DATE(S) ANALYZED: 11-10-87

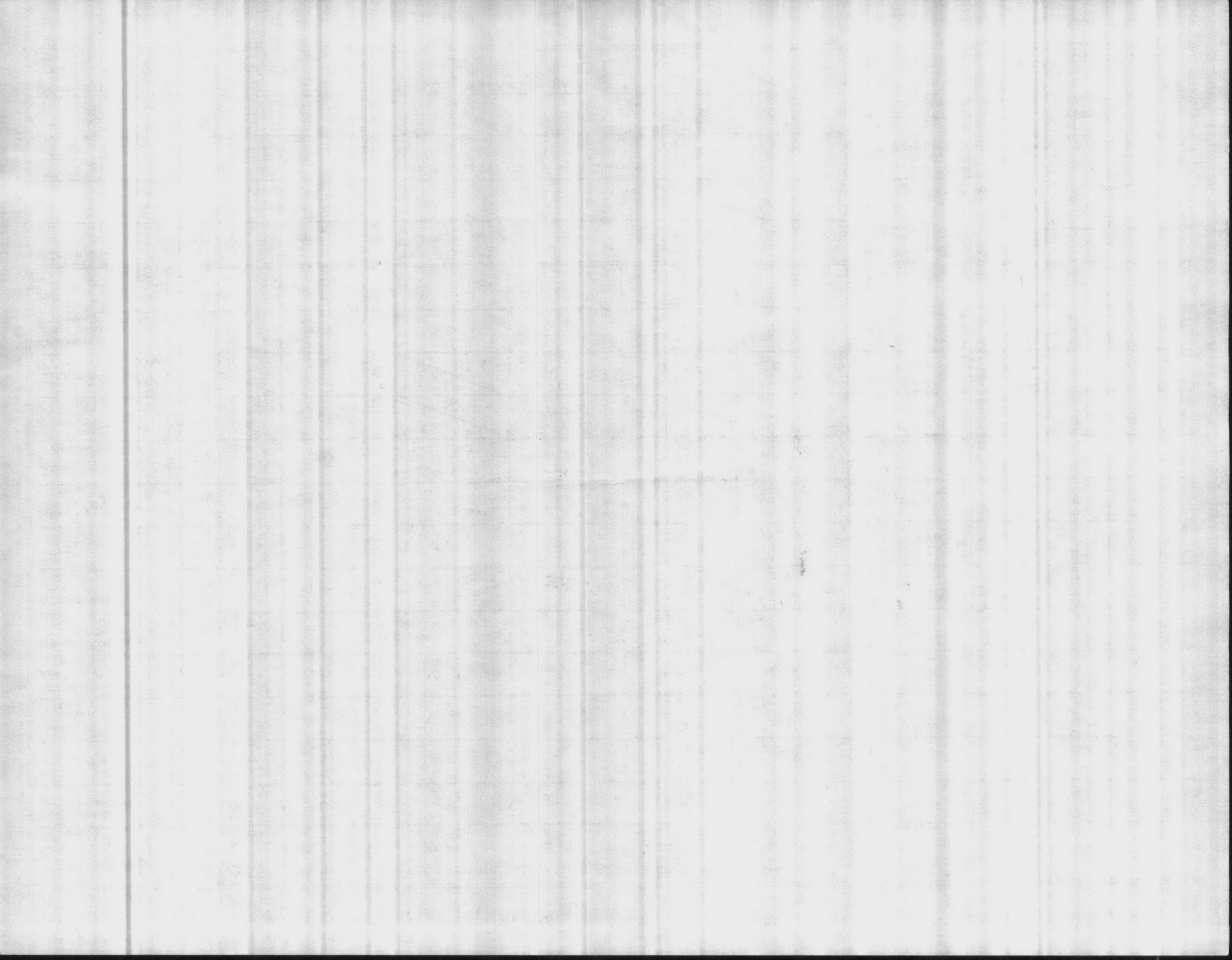
PLANT PARAMETER (UNITS)	HADNOT POINT 04-67-041	MCAS NEW RIVER 04-67-042	HOLCOMB BLVD 04-67-043	COURTHOUSE BAY 04-67-046	RIFLE RANGE 04-67-047	ONSLow BEACH 04-67-048			
pH-LABORATORY	8.1	8.4	8.7	8.3	8.0	7.5			
STABILITY	70.6	+0.3	+0.6	+0.2	+0.2	-0.2			
PHENOLTHALEIN ALKALINITY (PPM)	0	12	14	18	4	0			
METHYL ORANGE ALKALINITY (PPM)	54	160	68	182	168	172			
CARBONATES AS CaCO ₃ (PPM)	0	24	28	36	8	0			
BICARBONATES AS CaCO ₃ (PPM)	54	136	40	146	160	172			
CHLORIDES AS Cl (PPM)	20	88	14	22	48	24			
HARDNESS AS CaCO ₃ (PPM)	68	48	62	72	54	52			
IRON AS Fe (PPM)	AA	DOWN	—————→						
FLUORIDE (PPM)	AM	1.12	0.63	1.29	0.13	0.10	0.17		
	PM	1.06		1.24					
TURBIDITY (NTUS)	AM	0.5	0.5	0.7	0.2	0.3	0.4		
	PM	0.5		0.6					
CHLORINE RESIDUAL (PPM)		1.0	1.1	1.3	1.4	0.8	1.1		

REMARKS:

- COPY TO:
- UTIL DIR, BMD
 - WATER TREATMENT, UTIL DIV, BMD
 - PMU, NAYHOSP
 - PMU, MCAS-NR
 - DIVISION OF HEALTH SERVICES
 - N.C. DEPT OF HUMAN RESOURCES
 - NREAD
 - FILE (ATTACH WKST)

REPORT DATE: 11/10/87

REPORT PREPARED BY: Carol S. Shivers



ENVIRONMENTAL CHEMISTRY & MICROBIOLOGY LABORATORY REPORT
 CHEMICAL ANALYSIS - WATER TREATMENT PLANTS
 MCBCL 11330/3 (REV 7-87)

DATE COLLECTED: 10-20-87
 DATE(S) ANALYZED: 10-20-87

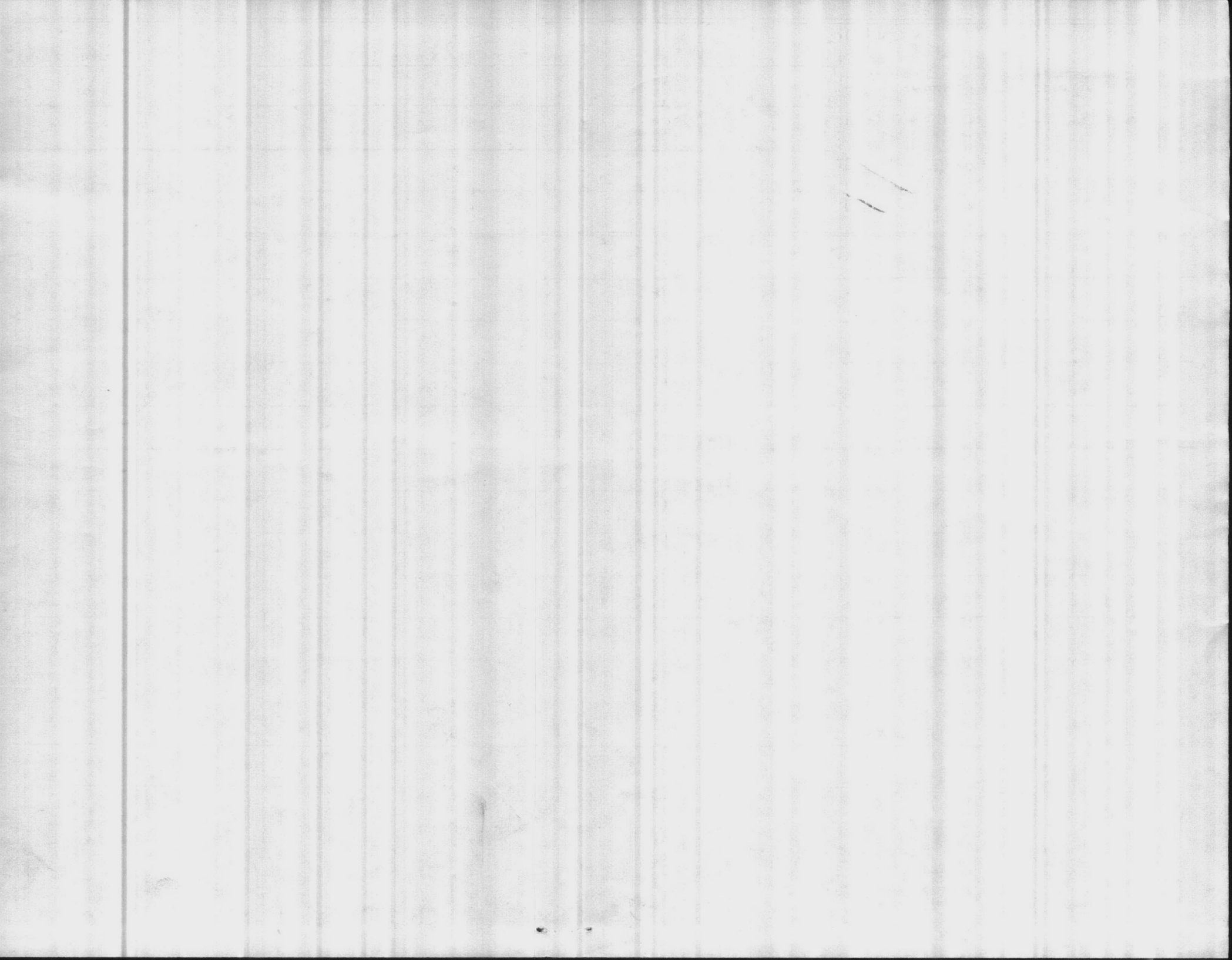
PLANT PARAMETER (UNITS)	HADNOT POINT 04-67-041	MCAS NEW RIVER 04-67-042	HOLCOMB BLVD 04-67-043	COURTHOUSE BAY 04-67-046	RIFLE RANGE 04-67-047	ONSLow BEACH 04-67-048			
pH-LABORATORY	8.7	8.5	8.5	7.6	8.2	7.4			
STABILITY	+0.4	+0.1	+0.3	-0.5	-0.1	-0.3			
PHENOLTHALEIN ALKALINITY (PPM)	6	8	4	0	0	0			
METHYL ORANGE ALKALINITY (PPM)	60	136	56	160	144	160			
CARBONATES AS CaCO ₃ (PPM)	12	16	8	0	0	0			
BICARBONATES AS CaCO ₃ (PPM)	48	120	48	160	144	160			
CHLORIDES AS Cl (PPM)	16	70	14	16	48	20			
HARDNESS AS CaCO ₃ (PPM)	64	46	64	50	52	80			
IRON AS Fe (PPM)									
FLUORIDE (PPM)	AM PM 0.94 1.00	0.61	1.06 1.15	0.15	0.11	0.15			
TURBIDITY (NTUS)	AM PM 0.5 0.5	0.8	0.9 1.4	0.7	0.5	9.0			
CHLORINE RESIDUAL (PPM)	1.0	1.0	1.2	1.0	0.8	1.1			

REMARKS:

- COPY TO:
- UTIL DIR, BMD
 - WATER TREATMENT, UTIL DIV, BMD
 - PMU, NAYHOSP
 - PMU, MCAS-NR
 - DIVISION OF HEALTH SERVICES
 - N.C. DEPT OF HUMAN RESOURCES
 - NREAD
 - FILE (ATTACH WKST)

REPORT DATE: 10-20-87

REPORT PREPARED BY: H. J. Burns




ENVIRONMENTAL CHEMISTRY & MICROBIOLOGY LABORATORY REPORT
 CHEMICAL ANALYSIS - WATER TREATMENT PLANTS
 MCBC 11330/3 (REV 7-87)

DATE COLLECTED

11-3-87

DATE(S) ANALYZED

11-3-87

PLANT PARAMETER (UNITS)	HADNOT POINT 04-67-041	MCAS NEW RIVER 04-67-042	HOLCOMB BLVD 04-67-043	COURTHOUSE BAY 04-67-046	RIFLE RANGE 04-67-047	ONSLow BEACH 04-67-048				
pH-LABORATORY	8.2	8.9	8.5	8.1	8.2	7.4				
STABILITY	+0.3	+0.2	+0.5	0.0	+0.1	-0.4	KEEP UP THE			
PHENOLTHALEIN ALKALINITY (PPM)	0	12	6	0	4	0	GOOD WORK			
METHYL ORANGE ALKALINITY (PPM)	44	140	62	164	156	164	slur			
CARBONATES AS CaCO ₃ (PPM)	0	24	12	0	8	0				
BICARBONATES AS CaCO ₃ (PPM)	44	116	50	164	148	164				
CHLORIDES AS Cl (PPM)	20	80	20	20	50	20				
HARDNESS AS CaCO ₃ (PPM)	56	50	64	64	54	58				
IRON AS Fe (PPM)										
FLUORIDE (PPM)	AM	1.02	0.58	0.96	0.11	0.10	0.13			
	PM									
TURBIDITY (NTUS)	AM	0.5	1.1	1.4	0.7	0.8	1.1			
	PM									
CHLORINE RESIDUAL (PPM)		1.1	1.0	1.1	1.1	1.2	0.9			

REMARKS:

COPY TO:

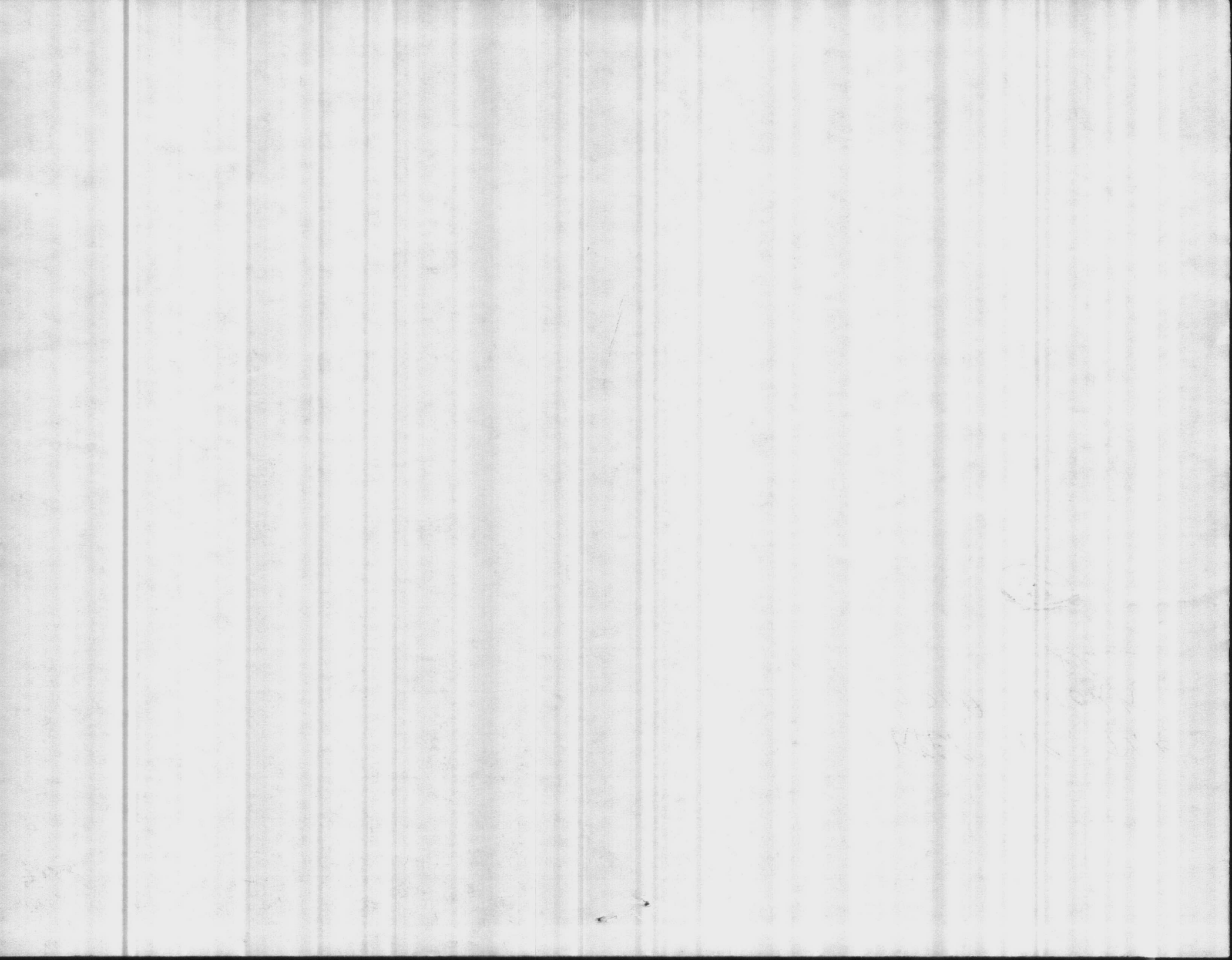
- UTIL Dir, BMD
 WATER TREATMENT, UTIL DIV, BMD
 PMU, NAYHOSP PMU, MCAS-NR
 DIVISION OF HEALTH SERVICES
 N.C. DEPT OF HUMAN RESOURCES
 NREAD FILE (ATTACH WKST)

REPORT DATE:

11-3-87

REPORT PREPARED BY:

H. J. Burns



ENVIRONMENTAL CHEMISTRY & MICROBIOLOGY LABORATORY REPORT
 CHEMICAL ANALYSIS - WATER TREATMENT PLANTS
 MCBCCL 11330/3 (REV 7-87)

DATE COLLECTED
 10-13-87

DATE(S) ANALYZED
 10-13-87

PLANT PARAMETER (UNITS)	HADNOT POINT 04-67-041	MCAS NEW RIVER 04-67-042	HOLCOMB BLVD 04-67-043	COURTHOUSE BAY 04-67-046	RIFLE RANGE 04-67-047	ONSLow BEACH 04-67-048			
pH-LABORATORY	8.7	8.5	8.5	7.6	8.2	7.5			
STABILITY	+0.4	+0.3	+0.4	-0.4	0.0	-0.5			
PHENOLTHALEIN ALKALINITY (PPM)	4	10	2	0	2	0			
METHYL ORANGE ALKALINITY (PPM)	50	130	60	170	146	154			
CARBONATES AS CaCO ₃ (PPM)	8	20	4	0	4	0			
BICARBONATES AS CaCO ₃ (PPM)	42	110	56	170	142	154			
CHLORIDES AS Cl (PPM)	12	70	12	14	32	24			
HARDNESS AS CaCO ₃ (PPM)	68	46	64	50	50	50			
IRON AS Fe (PPM)									
FLUORIDE (PPM)	AM PM 1.14 1.21	0.67	1.18 1.28	0.14	0.12	0.17			
TURBIDITY (NTUS)	AM PM 0.7 2.2	1.9	1.1 1.9	0.6	0.7	0.7			
CHLORINE RESIDUAL (PPM)	1.0	1.0	1.2	1.3	0.9	1.3			

REMARKS:

COPY TO:

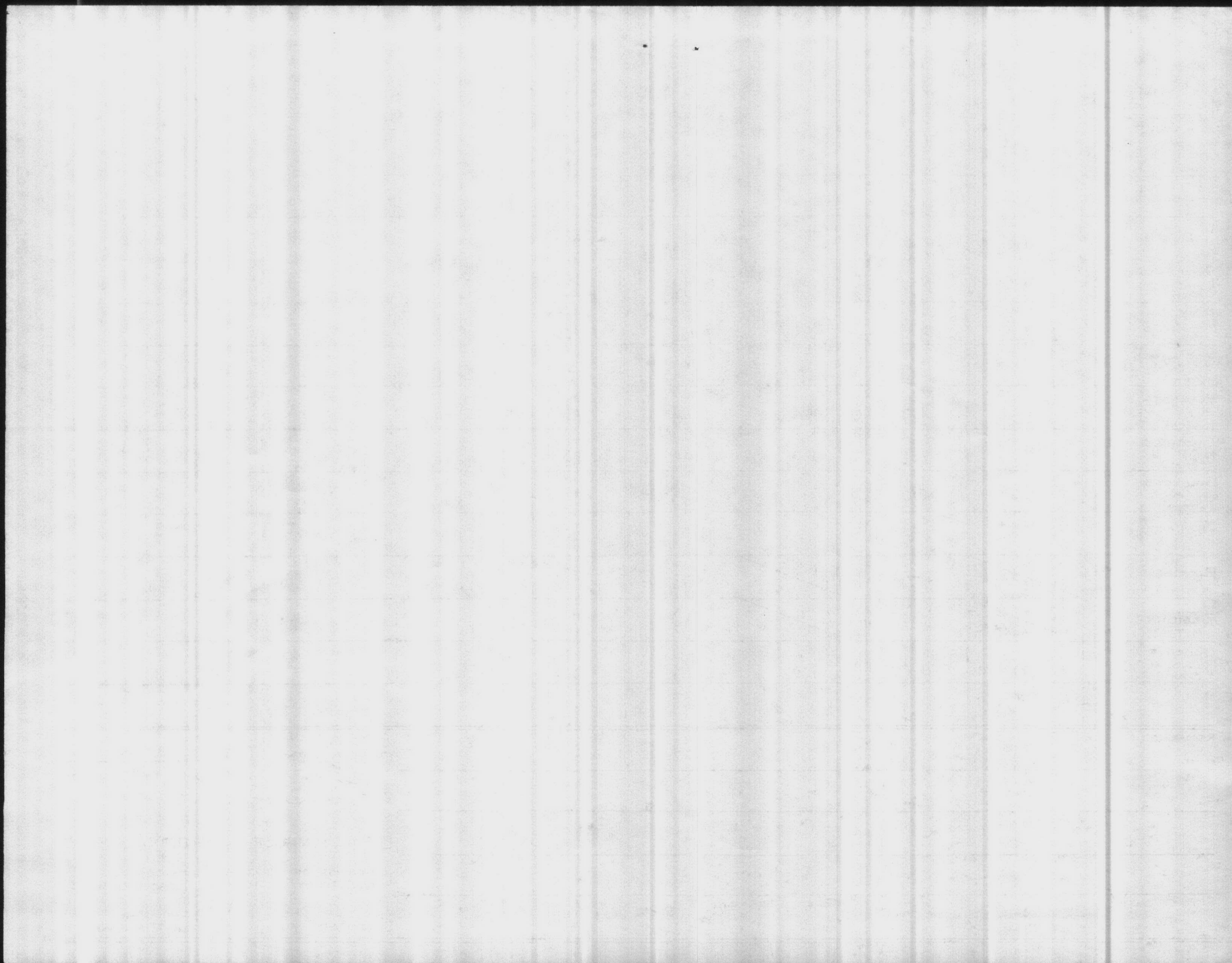
- UTIL DIR, BMD _____
 WATER TREATMENT, UTIL DIV, BMD
 PMU, NAYHOSP PMU, MCAS-NR
 DIVISION OF HEALTH SERVICES
 N.C. DEPT OF HUMAN RESOURCES
 NREAD FILE (ATTACH WKST)

REPORT DATE:

10-14-87

REPORT PREPARED BY:

H. J. Burns



ENVIRONMENTAL CHEMISTRY & MICROBIOLOGY LABORATORY REPORT
 CHEMICAL ANALYSIS - WATER TREATMENT PLANTS
 MCBCL 11330/3 (REV 7-87)

DATE COLLECTED: 10-6-87
 DATE(S) ANALYZED: 10-6-87

PLANT PARAMETER (UNITS)	HADNOT POINT 04-67-041	MCAS NEW RIVER 04-67-042	HOLCOMB BLVD 04-67-043	COURTHOUSE BAY 04-67-046	RIFLE RANGE 04-67-047	ONSLow BEACH 04-67-048			
pH-LABORATORY	8.3	8.8	8.7	7.8	8.3	7.7			
STABILITY	+0.3	+0.3	+0.3	-0.5	-0.1	-0.5			
PHENOLTHALEIN ALKALINITY (PPM)	0	8	4	0	2	0			
METHYL ORANGE ALKALINITY (PPM)	74	138	62	172	144	166			
CARBONATES AS CaCO ₃ (PPM)	0	16	8	0	4	0			
BICARBONATES AS CaCO ₃ (PPM)	74	122	54	172	140	166			
CHLORIDES AS Cl (PPM)	12	66	121	16	18	14		1	
HARDNESS AS CaCO ₃ (PPM)	78	60	69	60	92	70			
IRON AS Fe (PPM)	AA Down								
FLUORIDE (PPM)	AM	0.93		0.94		0.08		0.13	
	PM	0.84	0.42	0.88	0.09	0.08			
TURBIDITY (NTUS)	AM	0.7		0.8		0.8		2.6	
	PM	0.5	1.3	1.4	0.9	0.8			
CHLORINE RESIDUAL (PPM)	1.0	1.0	1.0	1.4	1.0	1.2			

REMARKS:
 0.3 Pond Ph = 8.1

- COPY TO:
- UTIL Dir, BMD
 - WATER TREATMENT, UTIL Div, BMD
 - PMU, NAYHOSP
 - PMU, MCAS-NR
 - DIVISION OF HEALTH SERVICES
N.C. DEPT OF HUMAN RESOURCES

REPORT DATE:
 10-7-87

REPORT PREPARED BY:
 Robert G. Deppner

- NREAD
- FILE (ATTACH WKST)

