

resubmitted 11-30-87

Plant: Wells and Swimming Pools

All H.B. 670

OPERATOR		SUN.	MON.	TUES.	WED.	THUR.	FRI.	SAT.
	WG-07	D/O	D/O	4/12	4/12	4/12	4/12	4/12
3.8	WG- 07	4/12	4/12	D/O	D/O	8/4	8/4	8/4
	WG- 07	8/4	8/4	8/4	8/4	8/4	D/O	D/O
Helper	WG- 05	D/O	8/4	8/4	8/4	8/4	8/4	D/O

Wells and Swimming Pools

Non-rotating - MCAS

	WG- 07	8/4	8/4	8/4	8/4	8/4	D/O	D/O
2.0	WG-07	D/O	D/O	(8/4	8/4	8/4)	8/4	8/4

Supply TRUCK

Relief Operators

WG-09

WG-09

WG-09

WG-09

(2) WL-9

6 Relief

31 Shifts

37

1 Foreman

38

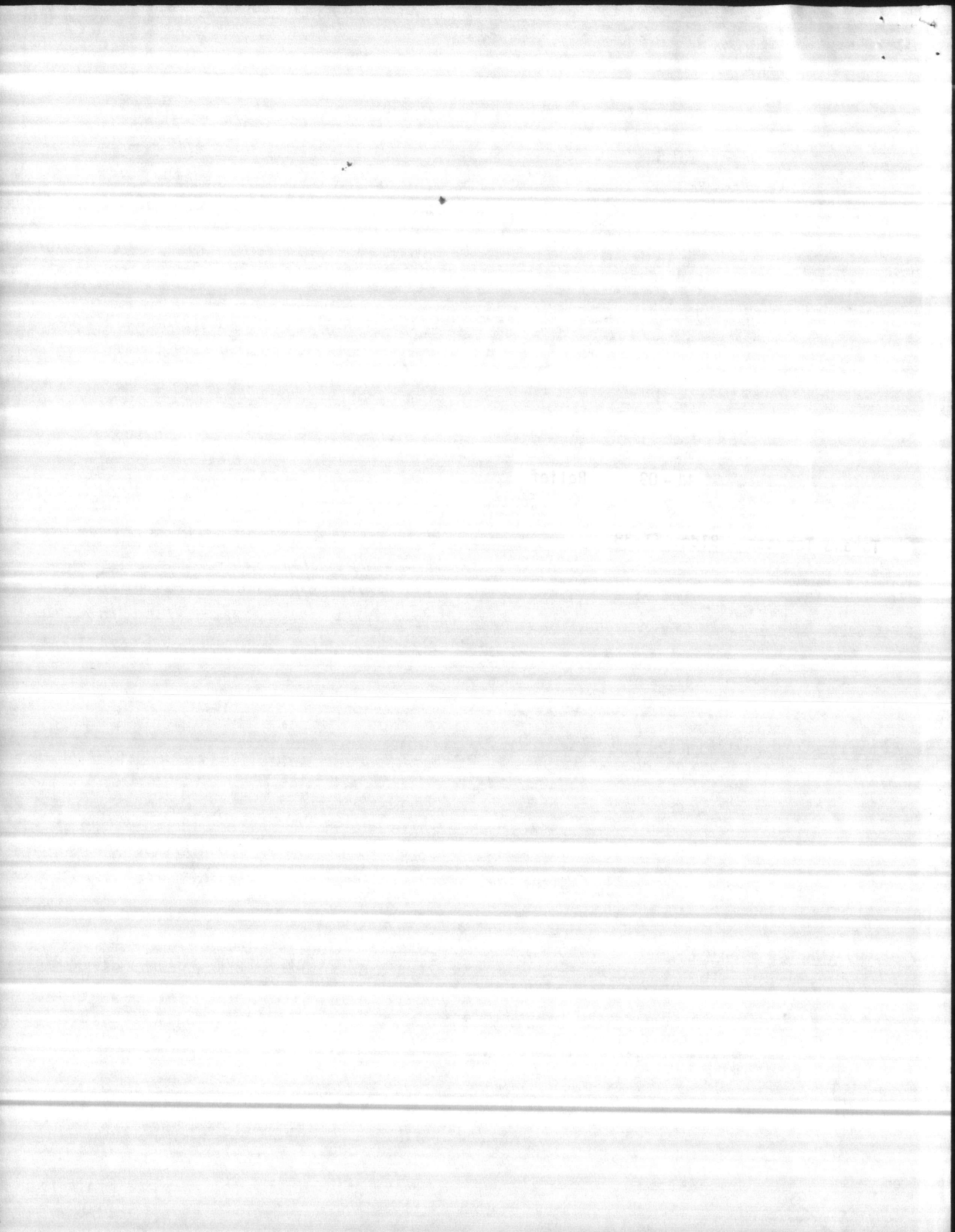
5 Mechs

43

00 - 12

00 - 12





Sent to Shirley M. 12-5-86

PLANT: Hadnot Point - Bldg. 20

OPERATOR		SUN.	MON.	TUES.	WED.	THUR.	FRI.	SAT.
Scottie Smallwood	WG-09	12/8	12/8	12/8	12/8	12/8	D/0	D/0
Joseph Riggs	WG-09	D/0	D/0	4/12	4/12	4/12	4/12	4/12
James Adkins	WG-09 ✓	4/12	D/0	D/0	8/4	8/4	8/4	8/4
Berton Mundt	WG-09 ✓	8/4	8/4	8/4	D/0	D/0	12/8	12/8
Billie Morton	WG-09 ✓		Relief	4/12				

-----  
Holcomb Blvd. - Bldg. 670

Joel Hartsoe	WL-09	12/8	12/8	12/8	12/8	12/8	D/0	D/0
Don Ellis	WL-09	D/0	D/0	4/12	4/12	4/12	4/12	4/12
Daniel Hill	WL-09	4/12	4/12	D/0	D/0	8/4	8/4	8/4
Stanley Pehowic	WL-09	8/4	8/4	8/4	8/4	D/0	D/0	12-8
Stanley Miller	WL-09		Relief				12/8	
Larry Holland	WL-09		Relief					

-----  
Tarawa Terrace - Bldg. TT-38

Alvin Riggs	WG-09	D/0	D/0	4/12	4/12	4/12	4/12	4/12
Larry Peterson	WG-09	8/4	8/4	8/4	D/0	D/0	12/8	12/8
Emory Campbell	WG-09 ✓	12/8	12/8	12/8	12/8	12/8	D/0	D/0
Talley Stone	WG-09	4/12	4/12	D/0	D/0	8/4	8/4	8/4
Billie Morton	WG-09		Relief		8/4			

-----  
Marine Corps Air Station - Bldg. AS-110

Phillip Collins	WG-09 ✓	12/8	12/8	12/8	12/8	12/8	D/0	D/0
Richard Sypnier	WG-09	D/0	D/0	4-12	4-12	4-12	4-12	4-12
Mike Marhelko	WG-09 ✓	4/12	4/12	D/0	D/0	8/4	8/4	8/4
Elbert Barber	WG-09 ✓	8/4	8/4	8/4	D/0	D/0	12/8	12/8
Vacant	WG-09		Relief		8/4			

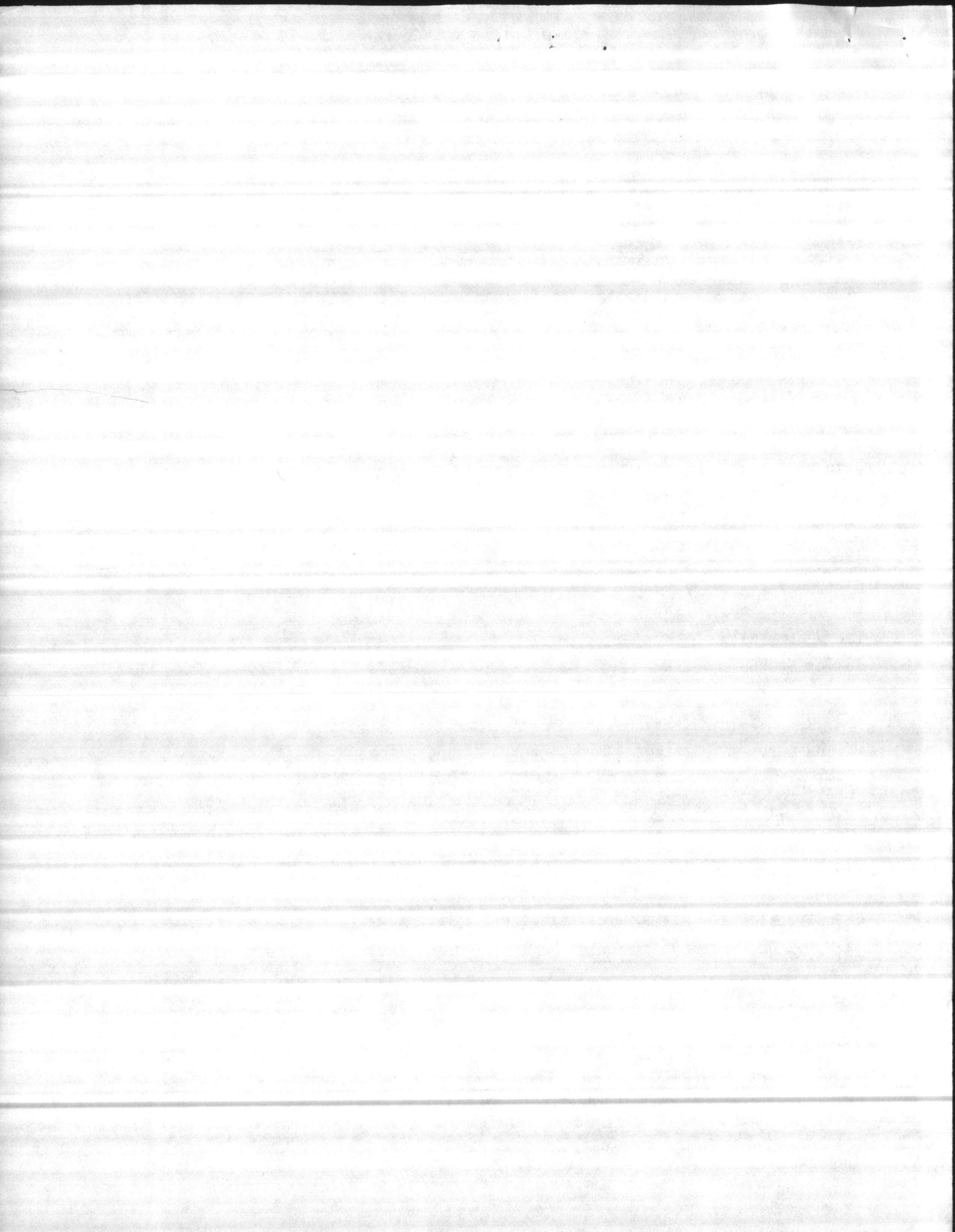
-----  
Rifle Range - RR-85

Rufus Hardison	WG-09 ✓	8/4	8/4	D/0	MCAS 8/4	D/0	8/4	8/4
Howard Reiff	WG-09	4/12	4/12	4/12	4/12	4/12	D/0	D/0
Jerry Lee	WG-09 ✓	D/0	D/0	8/4	8/4	8/4	4/12	4/12

-----  
Plant not manned on 12/8 shift

-----  
Courthouse Bay - BB-190 and Onslow Beach - BA-138

Corbrett Odum	WG-09 ✓	12/8	12/8	12/8	12/8	12/8	D/0	D/0
Robert Wooten	WG-09 ✓	D/0	D/0	4/12	4/12	4/12	4/12	4/12
Jack Cannon	WG-09 ✓	4/12	4/12	D/0	D/0	8/4	8/4	8/4
Calvin Kelly	WG-09 ✓	8/4	8/4	8/4	8/4	D/0	D/0	12/8
Billie Morton	WG-09		Relief				12/8	



Plant: Wells and Swimming Pools

All H.B. 670

OPERATOR		SUN.	MON.	TUES.	WED.	THUR.	FRI.	SAT.
Lynell Herring	WT- 00	D/0	D/0	4/12	4/12	4/12	4/12	4/12
James Dunlap	WG- 07 ✓	4/12	4/12	D/0	D/0	8/4	8/4	8/4
Bill Ward	WG- 07	8/4	8/4	8/4	8/4	8/4	D/0	D/0
Nancy Christensen	WG- 05	D/0	8/4	8/4	8/4	8/4	8/4	D/0

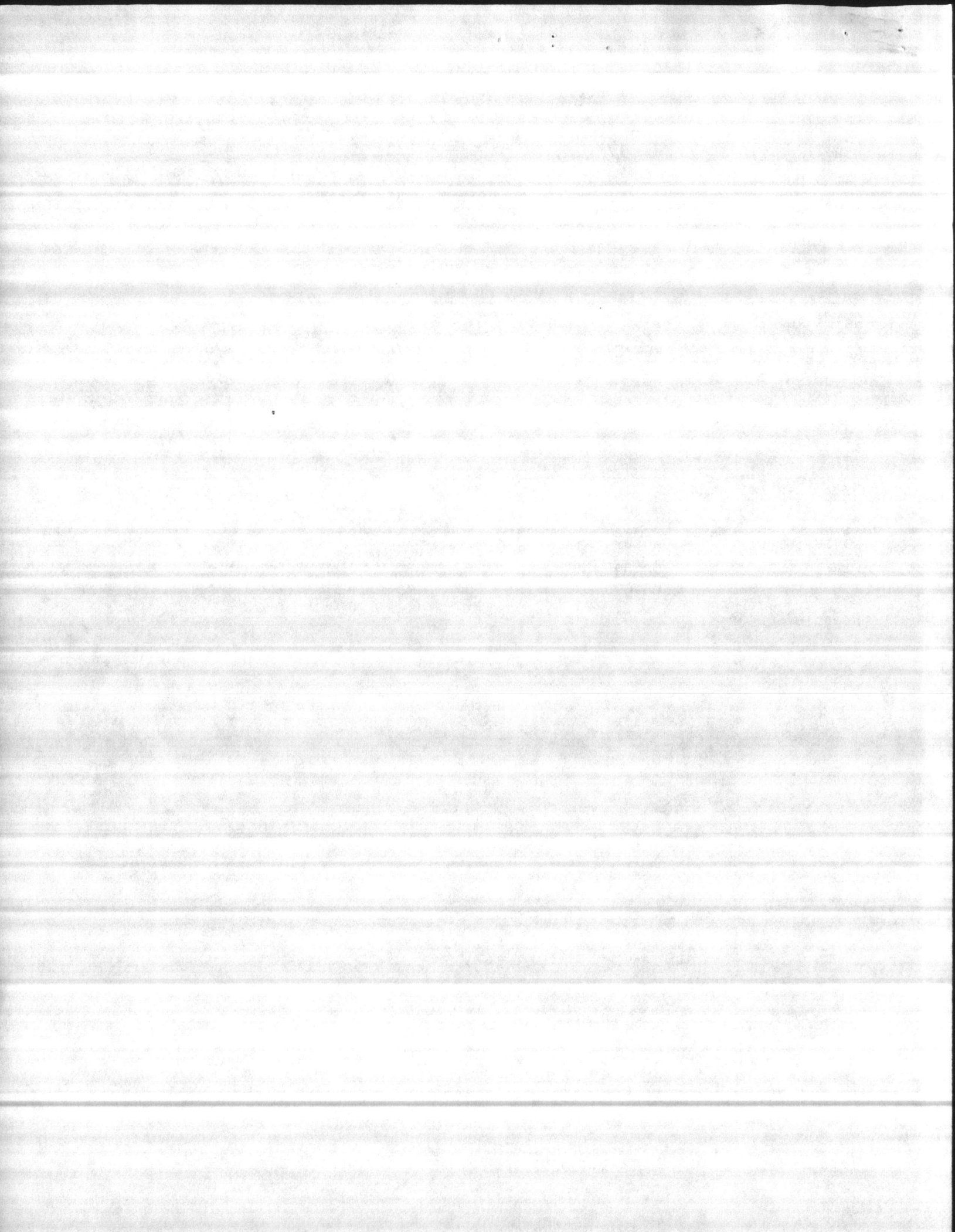
Wells and Swimming Pools

Non-rotating - MCAS

Nathaniel James	WG- 07	8/4	8/4	8/4	8/4	8/4	D/0	D/0
Major Phillips	WG- 05	D/0	D/0	8/4	8/4	8/4	8/4	8/4

#### Relief Operators

David Sumner	WG-09
Leon Parker	WG-09 ✓
George Milton	WG-09 ✓
Freddie Duncan	WG-09 ✓





# Relief Personnel

30 November - 6 December 1986

PETERSON OFF SATURDAY ✓

A. RIGGS OFF WEDNESDAY, THURSDAY ✓

MUNDT OFF SATURDAY ✓

CANNON OFF SUNDAY, MONDAY

BEHONIC OFF SATURDAY ✓

HARTSOE OFF WEDNESDAY, THURSDAY ✓

KELLY OFF WEDNESDAY ✓

JAMES OFF TUESDAY, WEDNESDAY, THURSDAY ✓

*See - off Wed*

MILLER HAS TUESDAY, WEDNESDAY, THURSDAY 8-4 H.B. (E)  
FRIDAY, SATURDAY 12-8 H.B. (Oper L)

*Wed - 8-4 - 71 yrs*

HOLLAND HAS MONDAY, TUESDAY 8-4 H.B. (E)  
WEDNESDAY, THURSDAY 12-8 H.B. (Oper L)  
FRIDAY 8-4 H.B. (E)

WUMNER HAS TUESDAY THRU SATURDAY 4-12 T.T. (Oper) 9

PARKER HAS MONDAY, TUESDAY, ~~██████████~~, ~~██████████~~, SATURDAY 8-4 M.P. (Oper) 9

*Wed - 8-4 AS*

DUNCAN HAS SUNDAY, MONDAY 4-12 CHB (Oper) 9  
TUESDAY 8-4 CHB (E)  
WEDNESDAY 8-4 CHB (Oper)  
SATURDAY 12-8 H.P. (Oper)

MILTON HAS SUNDAY 8-4 M.P. (Oper)  
WEDNESDAY, THURSDAY 12-8 T.T. (Oper) 9  
FRIDAY 8-4 ~~██████████~~ M.P.  
SATURDAY 8-4 T.T. (Oper)

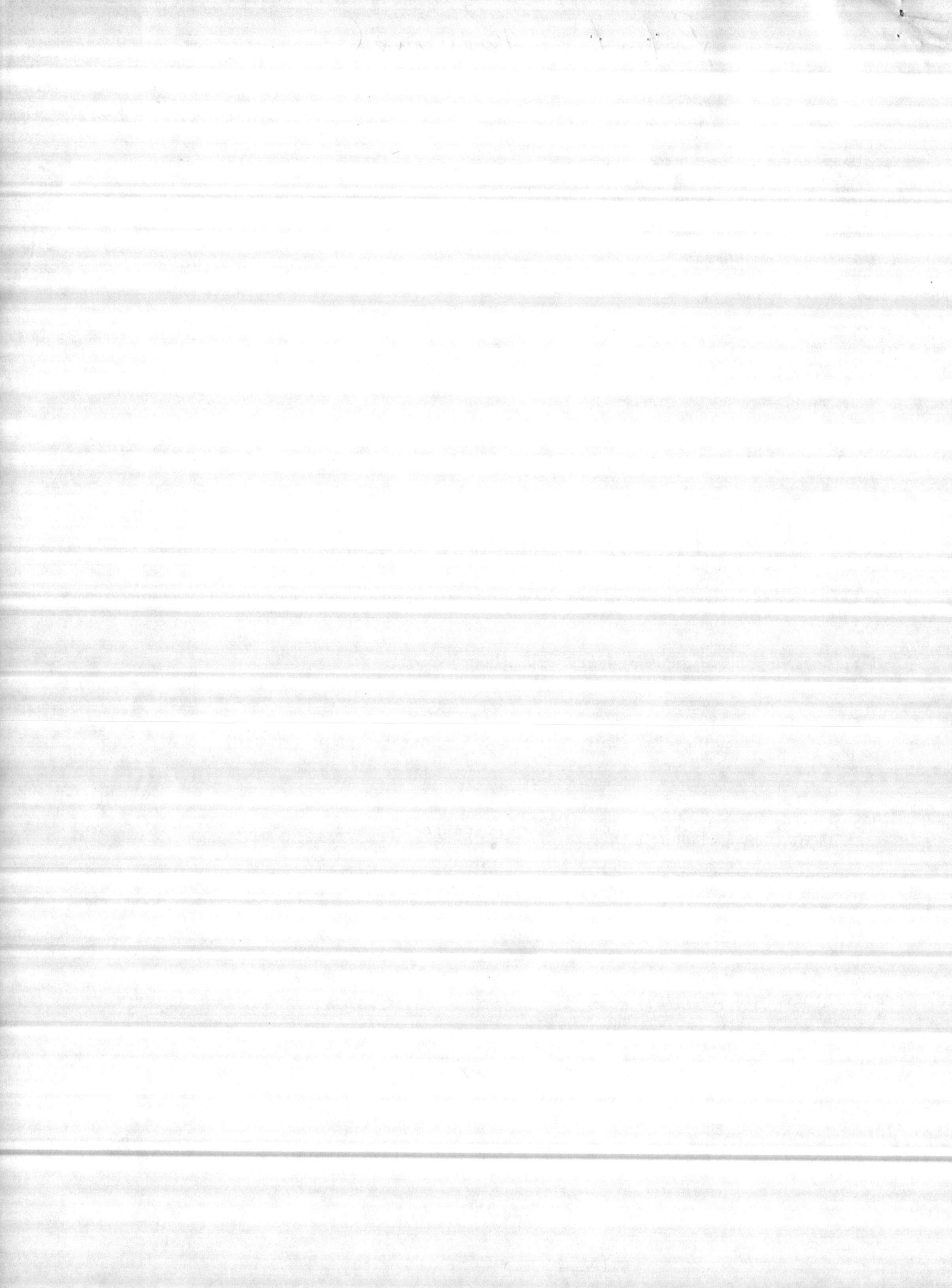
CHRISTENSEN HAS MONDAY 8-4 H.B. (Helper)  
TUESDAY, WEDNESDAY, THURSDAY 8-4 H.B. (Supplies)  
FRIDAY 8-4 H.B. (Helper)

## SICK LEAVE

T. STONE

~~PETERSON~~ S/L

THUR FRI SAT

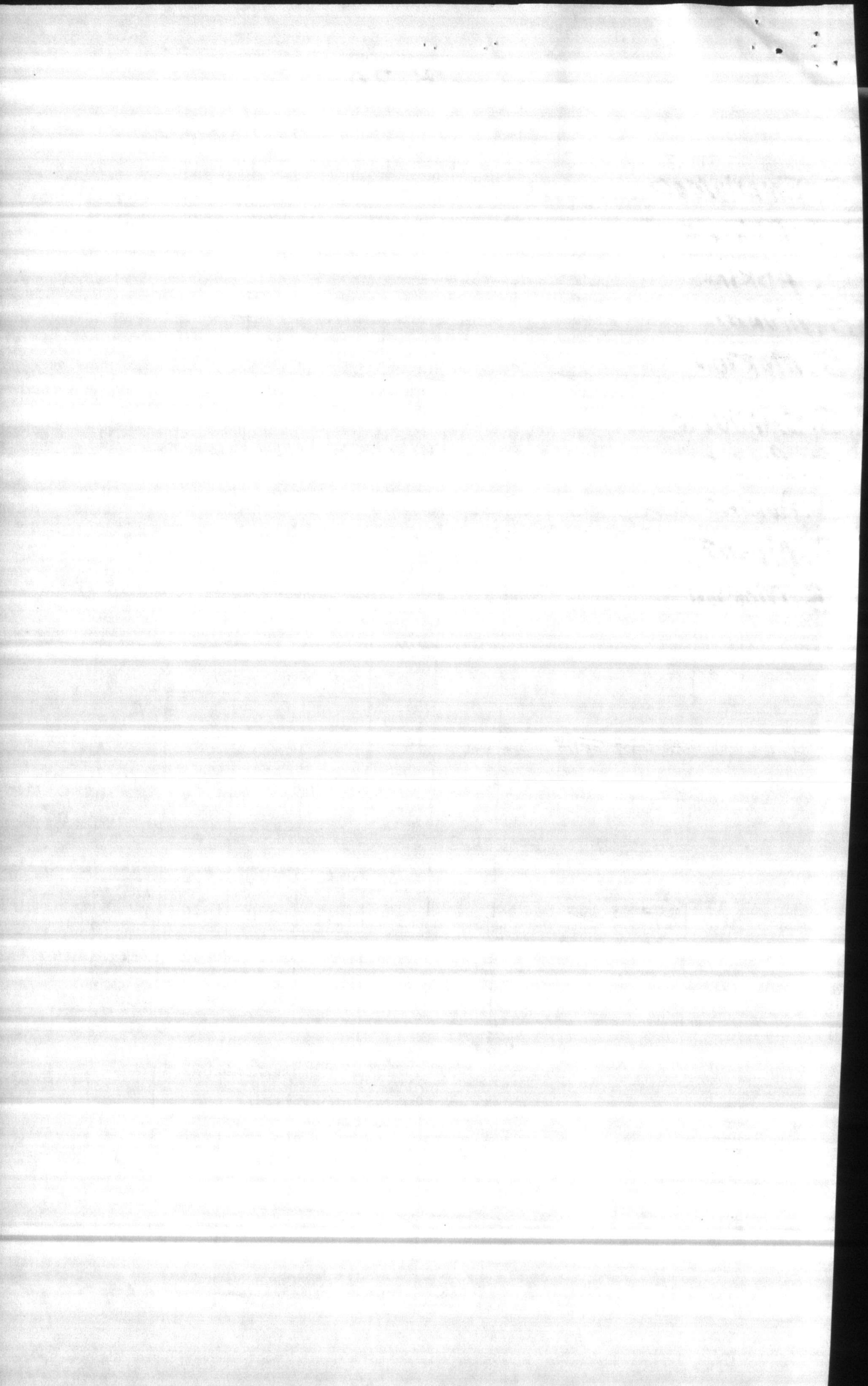


WATER TREATMENT

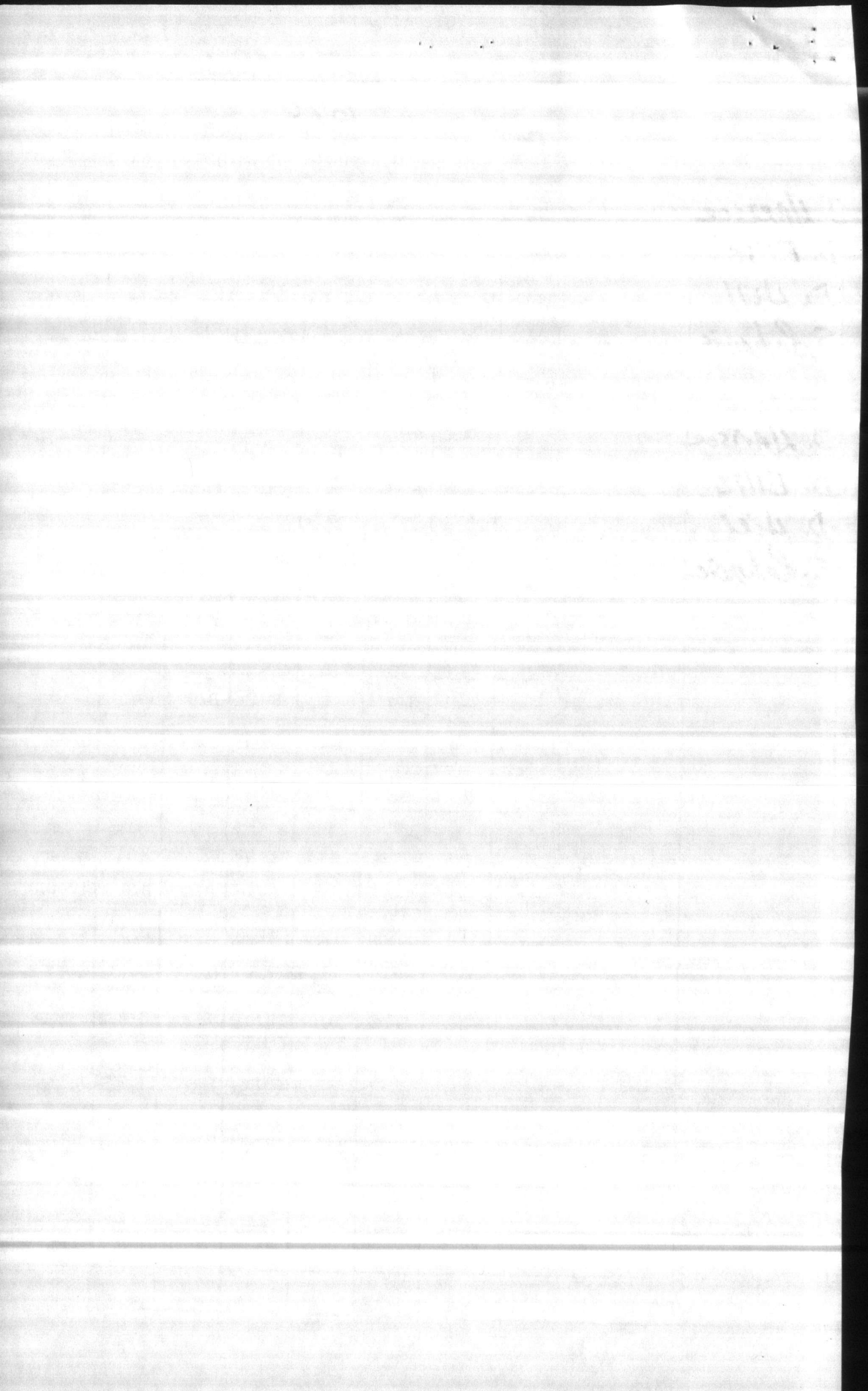
8-20

K728

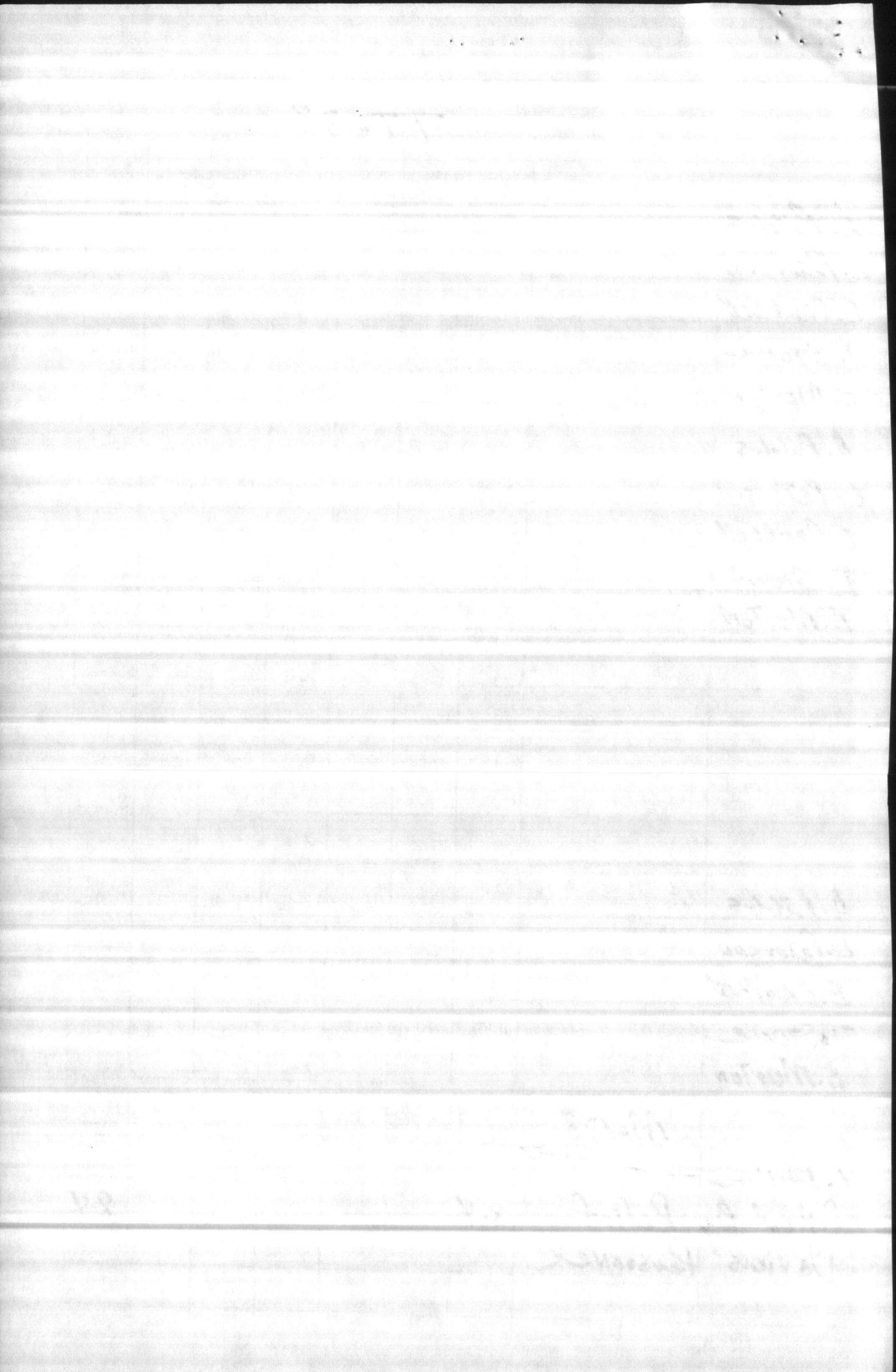
OPER	DATE	SUN.	MON.	TUES.	WED.	THUR.	FRI.	SAT.
S. SMALLWOOD		12-8	12-8	12-8	12-8	12-8	D/O	D/O
J. RIGGS		D/O	D/O	4-12	4-12	4-12	4-12	4-12
J. ADKINS	30 Nov - Dec	4-12	D/O	D/O	8-4	8-4	8-4	8-4
B. MURPHY		8-4	8-4	8-4	D/O	D/O	12-8	12-8
B. MORTON	4-20 July		4-12					
S. SMALLWOOD		D/O	D/O	4-12	4-12	4-12	4-12	4-12
J. RIGGS		4-12	D/O	D/O	8-4	8-4	8-4	8-4
J. ADKINS	Dec	8-4	8-4	8-4	D/O	D/O	12-8	12-8
B. MURPHY		12-8	12-8	12-8	12-8	12-8	D/O	D/O
B. MORTON	3-9 Feb		4-12					
	Aug 20 - 30 Nov	4-12	D/O	D/O	8-4	8-4	8-4	8-4
	31-22 Feb	8-4	8-4	8-4	D/O	D/O	12-8	12-8
	16-22 Nov	12-8	12-8	12-8	12-8	12-8	D/O	D/O
	10-11 Feb	D/O	D/O	4-12	4-12	4-12	4-12	4-12
			4-12					
	26 Nov	8-4	8-4	8-4	D/O	D/O	12-8	12-8
	12-15 Nov	12-8	12-8	12-8	12-8	12-8	D/O	D/O
	18-21 Nov	D/O	D/O	4-12	4-12	4-12	4-12	4-12
	21-25 June	4-12	D/O	D/O	8-4	8-4	8-4	8-4
			4-12					
Phillips		D/O	8-4	8-4	8-4	8-4	8-4	D/O











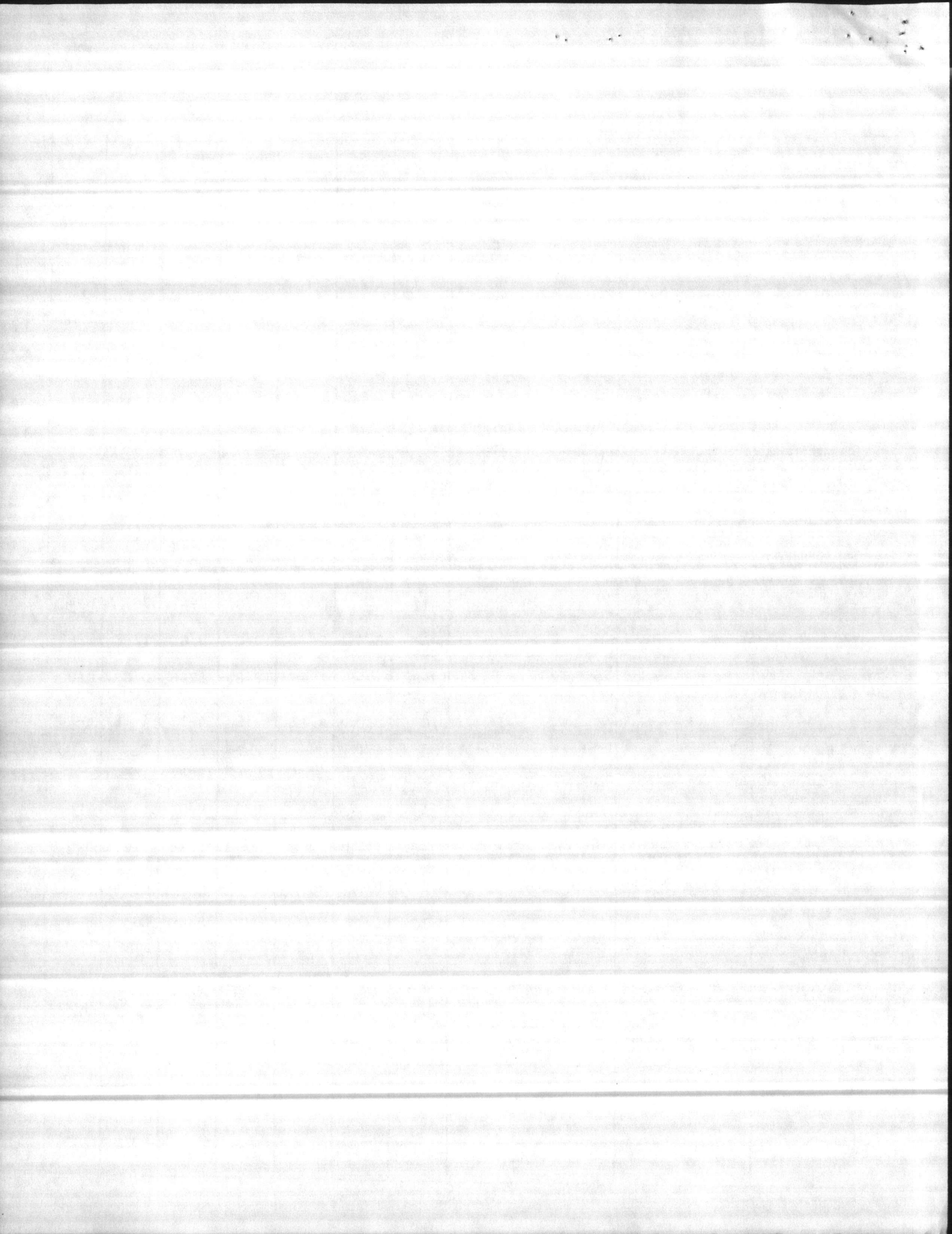


WATER TREATMENT

PLANT MARINE CORPS AIR STATION AS-110

K736

OPERATOR	HELPER	DATE	SUN.	MON.	TUES.	WED.	THUR.	FRI.	SAT.
COLLINS		30 Nov - 6 Dec	12-8	12-8	12-8	12-8	12-8	D/O	D/O
SPNIER		2-8 Nov	D/O	D/O	4-12	4-12	4-12	4-12	4-12
MARHOLZ		19-25 NOV	4-12	4-12	D/O	D/O	8-4	8-4	8-4
BARBER		29 Nov - 5 Dec	8-4	8-4	8-4	D/O	D/O	12-8	12-8
COLLINS		28-29 Nov	D/O	D/O	4-12	4-12	4-12	4-12	4-12
SPNIER		7-13 Dec	4-12	4-12	D/O	D/O	8-4	8-4	8-4
MARHOLZ		22-28 Nov	8-4	8-4	8-4	D/O	D/O	12-8	12-8
BARBER		28-29 Nov	12-8	12-8	12-8	12-8	12-8	D/O	D/O
COLLINS		26 Nov	4-12	4-12	D/O	D/O	8-4	8-4	8-4
SPNIER		27 Nov	8-4	8-4	8-4	D/O	D/O	12-8	12-8
MARHOLZ		16-22 Nov	12-8	12-8	12-8	12-8	12-8	D/O	D/O
BARBER		30 Nov	D/O	D/O	4-12	4-12	4-12	4-12	4-12
COLLINS		26 Nov	8-4	8-4	8-4	D/O	D/O	12-8	12-8
SPNIER		28 Nov	12-8	12-8	12-8	12-8	12-8	D/O	D/O
MARHOLZ		29-29 Nov	D/O	D/O	4-12	4-12	4-12	4-12	4-12
BARBER		29-29 Nov	4-12	4-12	D/O	D/O	8-4	8-4	8-4
	CHRISTENSEN		D/O	ncas 8-4	ncas 8-4	N 8 8-4	ncas 8-4	N.S. 8-4	D/O

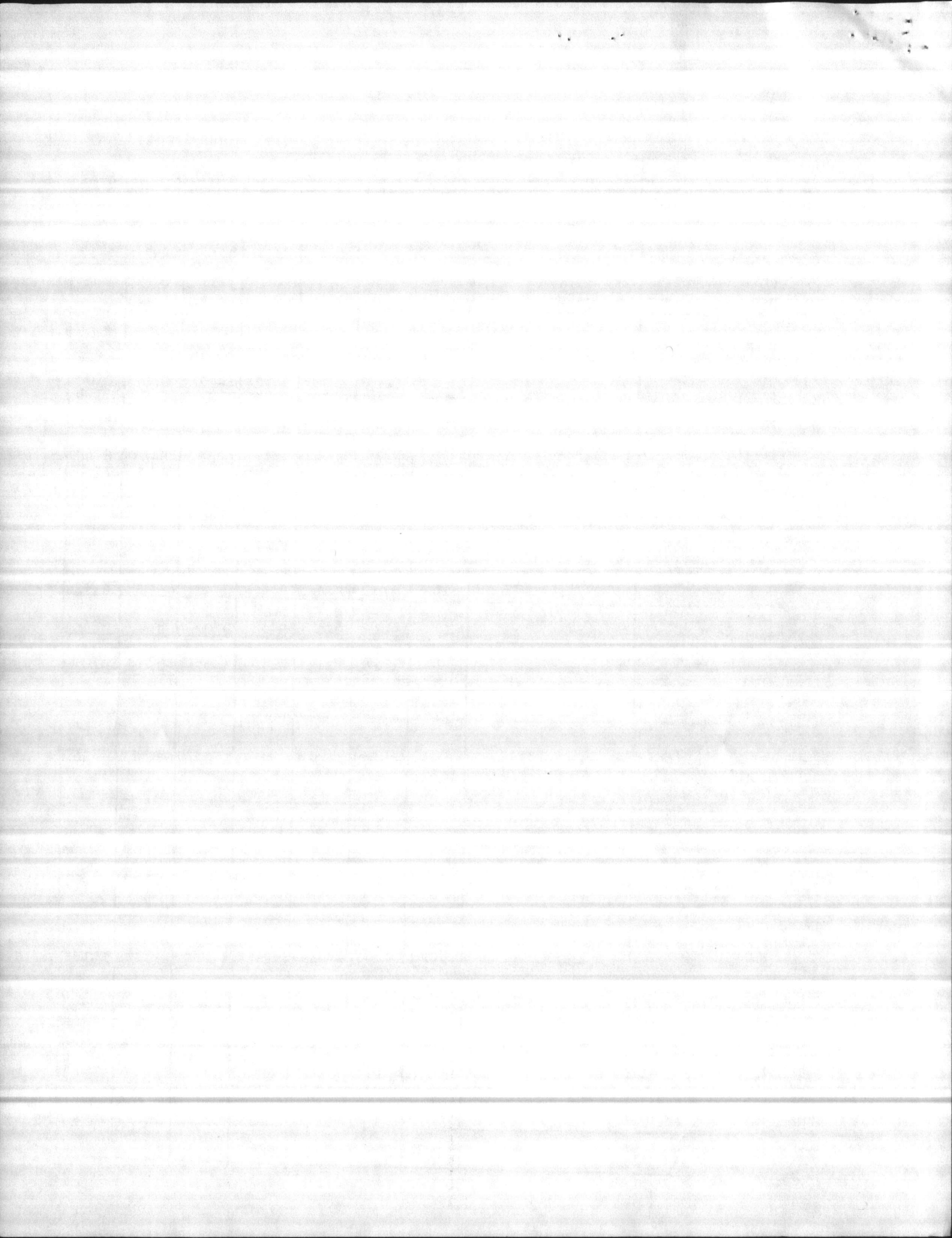


WATER TREATMENT

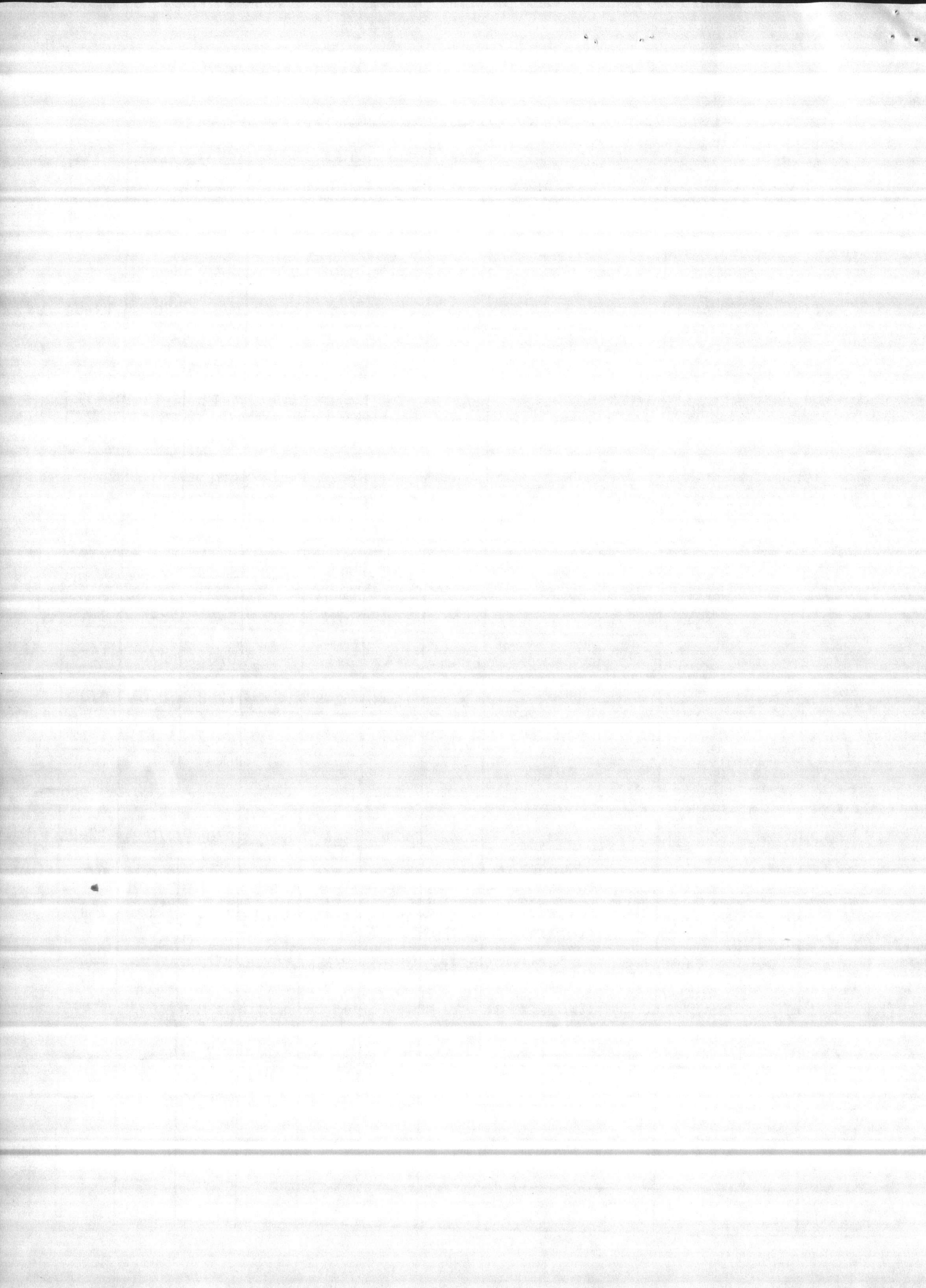
RR-85

K731

			WATER TREATMENT						
ATOR	HELPER	DATE	SUN.	MON.	TUES.	WED.	THUR.	FRI.	SAT.
DILSON	23 MAY	31	8-4	8-4	D/O	MCAS 8-4	D/O	8-4	8-4
Ruff	19-24 MAR	20	4-12	4-12	4-12	4-12	4-12	D/O	D/O
	23-24 JUL	10-16	D/O	D/O	8-4	8-4	8-4	4-12	4-12
	29	23-26 NOV							
DILSON		7-13 DEC	4-12	4-12	4-12	4-12	4-12	D/O	D/O
Ruff	6-11 JAN	30 NOV - DEC	D/O	D/O	8-4	8-4	8-4	4-12	4-12
	24 MAR W		8-4	8-4	D/O	MCAS 8-4	D/O	8-4	8-4
		27-28							
DILSON	MAY	7-13 DEC	D/O	D/O	8-4	MCAS 8-4	8-4	4-12	4-12
Ruff	20-25		8-4	8-4	D/O	MCAS 8-4	D/O	8-4	8-4
			4-12	4-12	4-12	4-12	4-12	D/O	D/O







Well & Swimming Pool

WATER TREATMENT

A11 H-B -670

HELPER	DATE	SUN.	MON.	TUES.	WED.	THUR.	FRI.	SAT.
HERRING	26 OCT - NOV	D/O	D/O	4-12	4-12	4-12	4-12	4-12
DUNLAP	27 OCT - NOV	4-12	4-12	D/O	D/O	8-4	8-4	8-4
WARD	28 OCT - NOV	8-4	8-4	8-4	8-4	8-4	D/O	D/O
	29 OCT - NOV							
	30 OCT - NOV							
	31 OCT - NOV							
	1-13 DEC							
HERRING	14 DEC	4-12	4-12	D/O	D/O	8-4	8-4	8-4
DUNLAP	15 DEC	8-4	8-4	8-4	8-4	8-4	D/O	D/O
WARD	16 DEC	D/O	D/O	4-12	4-12	4-12	4-12	4-12
	17 DEC							
	18 DEC							
	19 DEC							
	20 DEC							
	21 DEC							
	22 DEC							
	23-24 NOV							
HERRING	27 OCT - NOV	8-4	8-4	8-4	8-4	8-4	D/O	D/O
DUNLAP	28 OCT - NOV	D/O	D/O	4-12	4-12	4-12	4-12	4-12
WARD	29 NOV - DEC	4-12	4-12	D/O	D/O	8-4	8-4	8-4
	30 NOV - DEC							
	1 DEC							
	2 DEC							
	3 DEC							
	4 DEC							
	5 DEC							
	6 DEC							
	7 DEC							
	8 DEC							
	9 DEC							
	10 DEC							
	11 DEC							
	12 DEC							
	13 DEC							
	14 DEC							
	15 DEC							
	16 DEC							
	17 DEC							
	18 DEC							
	19 DEC							
	20 DEC							
	21 DEC							
	22 DEC							
	23 DEC							
	24 DEC							
	25 DEC							
	26 DEC							
	27 DEC							
	28 DEC							
	29 DEC							
	30 DEC							
	31 DEC							

