

11333
NREAD

FEB 08 1968

Mr. Wallace E. Venrick
Water Supply Branch
Division of Health Services
Post Office Box 2091
Raleigh, North Carolina 27602-2091

Dear Mr. Venrick:

Enclosures (1), (2) and (3) are the Synthetic Organic Chemical Analysis of the Hadnot Point (HP) Water Treatment Plant, ID Number 04-67-041, Marine Corps Air Station (MCAS) Water Treatment Plant, ID Number 04-67-042 and the Holcomb Blvd (HB) Water Treatment Plant, ID Number 04-67-043. All samples were collected by the Environmental Chemistry and Microbiology Section personnel and analyzed by Oxford Laboratories, Inc.

Point of contact in this matter is Ms. Elizabeth Betz, phone (919) 451-5977.

Sincerely,

JULIAN I. WOOTEN
Director, Natural Resources Division
By direction of the Commanding General

Encls:

- (1) SOCs for HP
- (2) SOCs for MCAS
- (3) SOCs for HB

Copy to:

LANTDIV

Blind copy to:

EC&MS (2)

AC/S FAC

→ BMO (Util Dir)

REC- 80 037

UNREGULATED VOLATILE SYNTHETIC ORGANIC CHEMICALS
 (VOCs)

LABORATORY ID#: 3 7 7 2 1
 WATER SYSTEM ID#: 0 4 - 6 7 - 0 4 1 COUNTY: Onslow
 NAME OF SYSTEM: Hadnot Point Water System
 TYPE OF SAMPLE: E (D=Distribution, W=Source, E=Entry, S=Special)
 COLLECTED ON: DATE: 12 / 23 / 87 (MM/DD/YY) TIME: 11 : 45 AM (HH:MM XM)
 LOCATION WHERE COLLECTED: Bldg 20 Distribution Pump @ Plant
 COLLECTED BY: EC & MS Laboratory LOCATION/SOURCE CODE:
 MAIL RESULTS TO:
Commanding General Attn: NREAD
Marine Corps Base
Camp Lejeune, NC 28542
 TELEPHONE # (919) 451-5977

TYPE OF SUPPLY:
 COMMUNITY
 NTNC
 NON-COMMUNITY
 PRIVATE

WATER SOURCE(S):
 GROUND
 SURFACE
 PURCHASED

TYPE TREATMENT:
 NONE
 CHLORINATED
 FLUORIDATED
 FILTERED
 ALUM
 LIME
 SODA ASH
 CAUSTIC
 WATER SOFTENER
 POTASSIUM PERMANGANATE
 PHOSPHATE, IRON CONTROL
 PHOSPHATE, MANG. CONTROL
 PHOSPHATE, CORR. CONTROL
 OTHER Aeration

CONTAM CODE	NAME	METHOD CODE	RESULTS
****	*****	****	***.*****
2210	Chloromethane, mg/l	2 1 6	L 0.0005
2214	Bromomethane, mg/l	2 1 6	L 0.0005
2216	Chloroethane, mg/l	2 1 6	L 0.0005
2228	1,3-Dichloropropene, mg/l	2 1 6	L 0.0005
2380	cis-1,2-Dichloroethylene, mg/l	2 1 6	L 0.0005
2408	Dibromomethane, mg/l	2 1 6	L 0.0005
2410	1,1-Dichloropropene, mg/l	2 1 6	L 0.0005
2412	1,3-Dichloropropane, mg/l	2 1 6	L 0.0005
2414	1,2,3-Trichloropropane, mg/l	2 1 6	L 0.0005
2416	2,2-Dichloropropane, mg/l	2 1 6	L 0.0005

SAMPLE UNSATISFACTORY ()

RESAMPLE REQUESTED ()

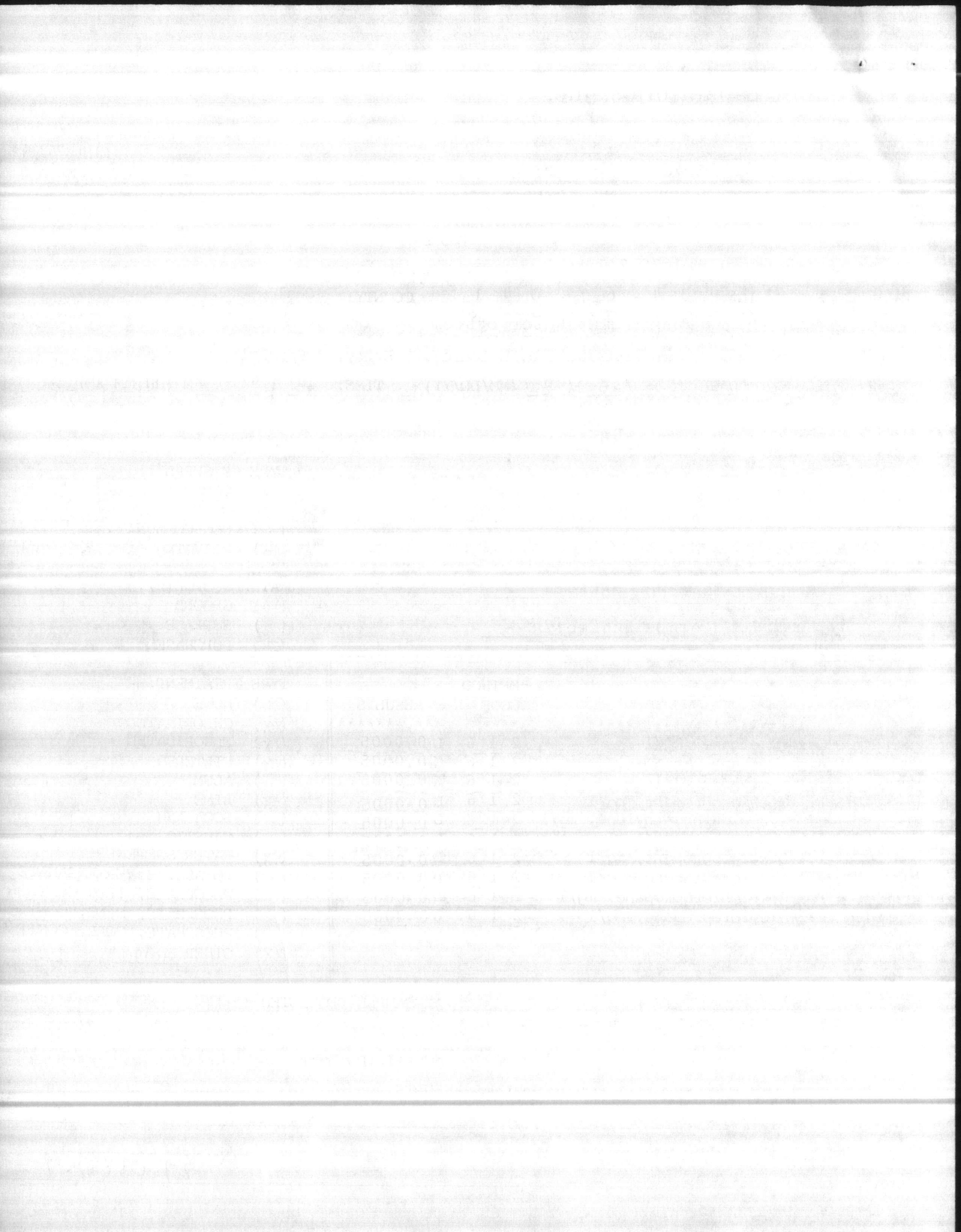
DATE ANALYSES BEGUN: 12/24/87

DATE ANALYSES COMPLETED: 01/05/88

CERTIFIED BY: Bruce Babson

COMMENTS: SEE ATTACHED LIST FOR ADDITIONAL RESULTS

87W8817.1



UNREGULATED VOCs (Continued)

LABORATORY ID#: 3 7 7 2 1

WATER SYSTEM ID#: 0 4 - 6 7 - 0 4 1

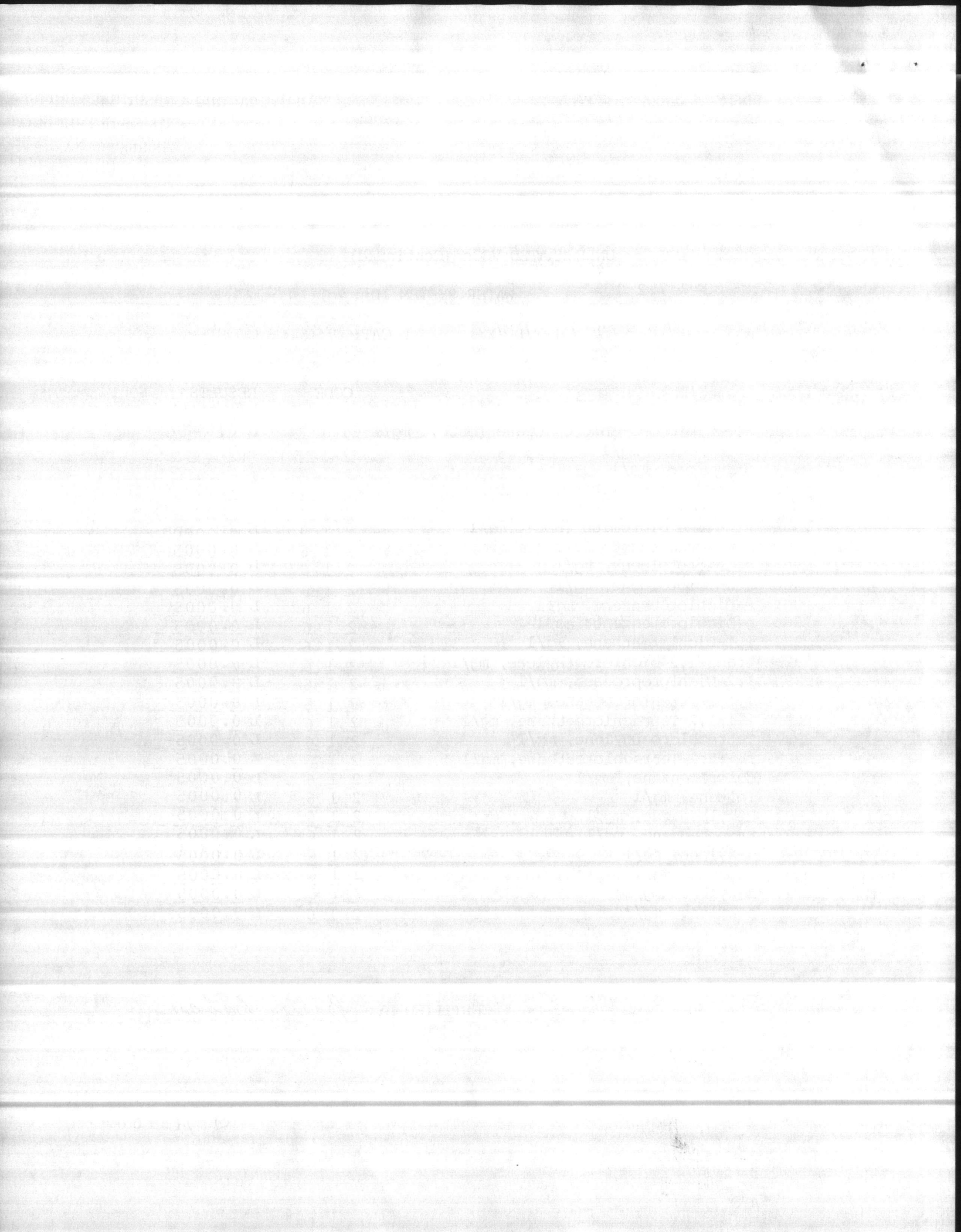
COLLECTION DATE: 1 2 / 2 3 / 8 7 (MM/DD/YY)

LOCATION/SOURCE CODE:

CONTAM CODE	NAME	METHOD CODE	RESULTS
*****	*****	*****	***.*****
2931	1,2-Dibromo-3-Chloropropane (DBCP), mg/l	2 1 9	L 0.00002
2941	Chloroform, mg/l	2 1 5	0.0051
2942	Bromoform, mg/l	2 1 5	<0.0025
2943	Bromodichloromethane, mg/l	2 1 5	0.0043
2944	Chlorodibromomethane, mg/l	2 1 5	0.0025
2946	Ethylene dibromide (EDB), mg/l	2 1 9	L 0.00002
2964	Dichloromethane, mg/l	2 1 6	L 0.0005
2965	o-Chlorotoluene, mg/l	2 1 6	L 0.0005
2966	p-Chlorotoluene, mg/l	2 1 6	L 0.0005
2967	m-Dichlorobenzene, mg/l	2 1 6	L 0.0005
2968	o-Dichlorobenzene, mg/l	2 1 6	L 0.0005
2978	1,1-Dichloroethane, mg/l	2 1 6	L 0.0005
2979	trans-1,2-Dichloroethylene, mg/l	2 1 6	L 0.0005
2983	1,2-Dichloropropane, mg/l	2 1 6	L 0.0005
2985	1,1,2-Trichloroethane, mg/l	2 1 6	L 0.0005
2986	1,1,1,2-Tetrachloroethane, mg/l	2 1 6	L 0.0005
2987	Tetrachloroethylene, mg/l	2 1 6	L 0.0005
2988	1,1,2,2-Tetrachloroethane, mg/l	2 1 6	L 0.0005
2989	Chlorobenzene, mg/l	2 1 6	L 0.0005
2991	Toluene, mg/l	2 1 6	L 0.0005
2992	Ethylbenzene, mg/l	2 1 6	L 0.0005
2993	Bromobenzene, mg/l	2 1 6	L 0.0005
2995	m-Xylene, mg/l	2 1 6	L 0.0005
2996	Styrene, mg/l	2 1 6	L 0.0005
2997	o-Xylene, mg/l	2 1 6	L 0.0005
2999	p-Xylene, mg/l	2 1 6	L 0.0005

CERTIFIED BY: Bruce Sabson

87W8817.1



VOLATILE SYNTHETIC ORGANIC CHEMICALS
 (VOCs)

LABORATORY ID#: 3 7 7 2 1
 WATER SYSTEM ID#: 04-67-041 COUNTY: ONSLOW
 NAME OF SYSTEM: HADNOT POINT WATER SYSTEM
 TYPE OF SAMPLE: E (D=Distribution, W=Source, E=Entry, S=Special)
 COLLECTED ON: DATE: 12/23/87 (MM/DD/YY) TIME: 11:45 AM (HH:MM XM)
 COLLECTED BY: EC & MS LABORATORY LOCATION/SOURCE CODE: ---
 LOCATION WHERE COLLECTED: BLDG 20 DIST. PUMP @ PLANT
 MAIL RESULTS TO: COMMANDING GENERAL ATTN: NREAD
MARINE CORPS BASE
CAMP LEJUNE, NC 28542
 TELEPHONE # (919) 451-5977

TYPE OF SUPPLY:
 COMMUNITY
 NTNC
 NON-COMMUNITY
 PRIVATE

WATER SOURCE(S):
 GROUND
 SURFACE
 PURCHASED

CONTAM CODE	NAME	METHOD CODE	RESULTS	ALLOW. LIMITS
2969	p-DICHLOROBENZENE, mg/l	2 16	L 0.0005	0.0750
2976	VINYL CHLORIDE, mg/l	2 16	L 0.0005	0.0020
2977	1,1-DICHLOROETHYLENE, mg/l	2 16	L 0.0005	0.0070
2980	1,2-DICHLOROETHANE, mg/l	2 16	L 0.0005	0.0050
2981	1,1,1-TRICHLOROETHANE, mg/l	2 16	L 0.0005	0.2000
2982	CARBON TETRACHLORIDE, mg/l	2 16	L 0.0005	0.0050
2984	TRICHLOROETHYLENE, mg/l	2 16	L 0.0005*	0.0050
2990	BENZENE, mg/l	2 16	L 0.0005	0.0050

TYPE TREATMENT:
 NONE
 CHLORINATED
 FLUORIDATED
 FILTERED
 ALUM
 LIME
 SODA ASH
 CAUSTIC
 WATER SOFTENER
 POTASSIUM PERMANGANATE
 PHOSPHATE, IRON CONTR
 PHOSPHATE, MANG. CONTR
 PHOSPHATE, CORR. CONTR
 OTHER AERATION

SAMPLE UNSATISFACTORY ()

RESAMPLE REQUESTED ()

DATE ANALYSES BEGUN: 12/24/87

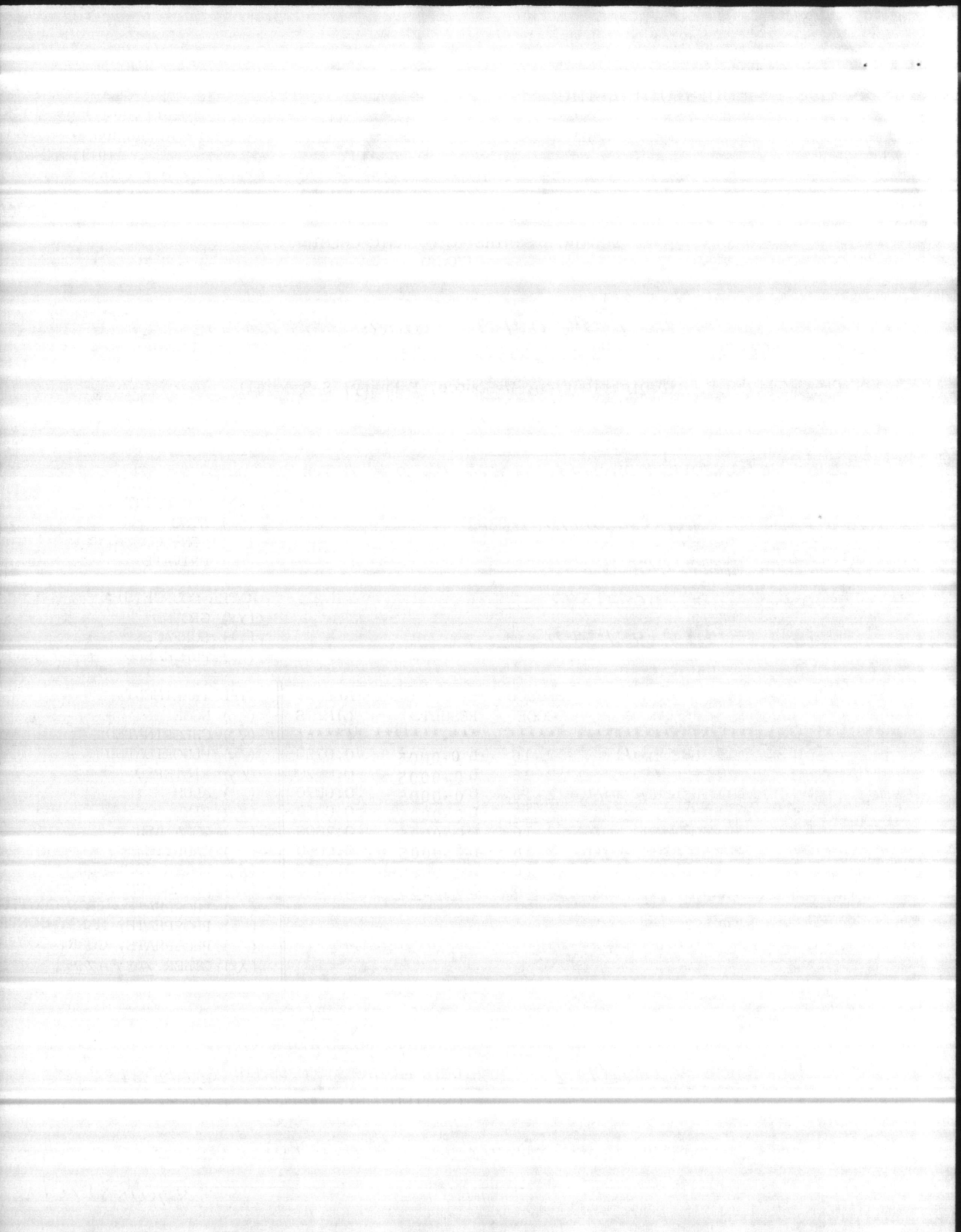
DATE ANALYSES COMPLETED: 01/10/88

CERTIFIED BY: Bruce Babson

COMMENTS:

* Compound actually detected at 0.2 PPB

87W8817.1



VOLATILE SYNTHETIC ORGANIC CHEMICALS
 (VOCs)

LABORATORY ID#: 3 7 7 2 1
 WATER SYSTEM ID#: 04-67-042 COUNTY: ANSON
 NAME OF SYSTEM: MARINE CORPS AIR STATION - NEW RIVER
 TYPE OF SAMPLE: E (D=Distribution, W=Source, E=Entry, S=Special)
 COLLECTED ON: DATE: 12/23/87 (MM/DD/YY) TIME: 10:10 A M (HH:MM XM)
 COLLECTED BY: EC & MS LABORATORY LOCATION/SOURCE CODE: _____

LOCATION WHERE COLLECTED: AS-110 Dist. Pump @ PLANT
 MAIL RESULTS TO:

Commanding General ATTN: NREAD

MARINE CORPS BASE

CAMP LEJUNE, NC 28542

TELEPHONE # (919) 451-5977

TYPE OF SUPPLY:
 COMMUNITY
 NTNC
 NON-COMMUNITY
 PRIVATE

WATER SOURCE(S):
 GROUND
 SURFACE
 PURCHASED

CONTAM CODE	NAME	METHOD CODE	RESULTS	ALLOW. LIMITS
2969	p-DICHLOROBENZENE, mg/l	2 16	L 0.0005	0.0750
2976	VINYL CHLORIDE, mg/l	2 16	L 0.0005	0.0020
2977	1,1-DICHLOROETHYLENE, mg/l	2 16	L 0.0005	0.0070
2980	1,2-DICHLOROETHANE, mg/l	2 16	L 0.0005	0.0050
2981	1,1,1-TRICHLOROETHANE, mg/l	2 16	L 0.0005	0.2000
2982	CARBON TETRACHLORIDE, mg/l	2 16	L 0.0005	0.0050
2984	TRICHLOROETHYLENE, mg/l	2 16	L 0.0005	0.0050
2990	BENZENE, mg/l	2 16	L 0.0005	0.0050

TYPE TREATMENT:
 NONE
 CHLORINATED
 FLUORIDATED
 FILTERED
 ALUM
 LIME
 SODA ASH
 CAUSTIC
 WATER SOFTENER
 POTASSIUM PERMANGANATE
 PHOSPHATE, IRON CONTROLLER
 PHOSPHATE, MANG. CONTROLLER
 PHOSPHATE, CORR. CONTROLLER
 OTHER DECONTAMINATION

SAMPLE UNSATISFACTORY ()

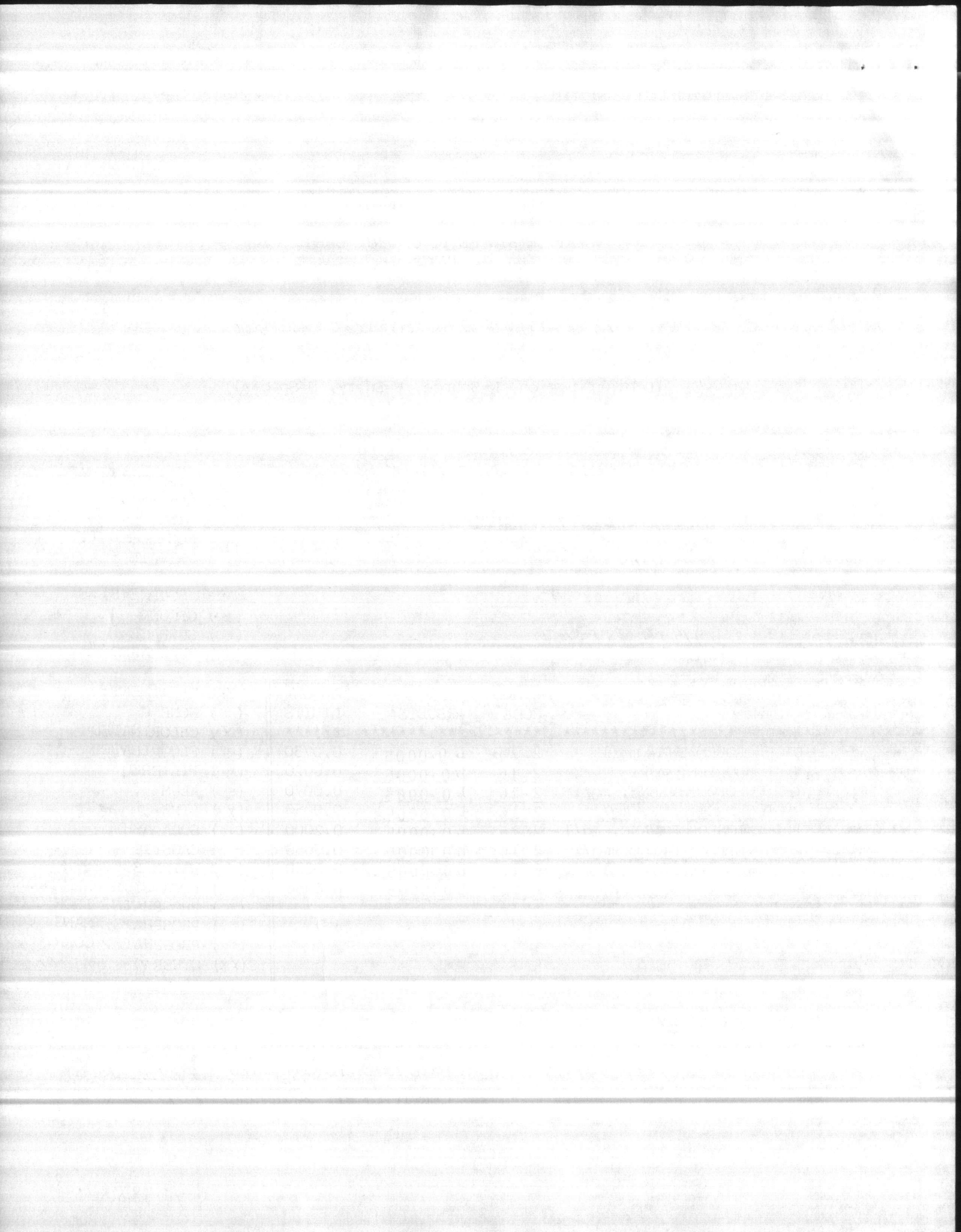
RESAMPLE REQUESTED ()

DATE ANALYSES BEGUN: 12/24/87

DATE ANALYSES COMPLETED: 01/05/88

CERTIFIED BY: Bruce Salson

COMMENTS:



Oxford Laboratories, Inc.

Analytical and Consulting Chemists
1316 South Fifth Street
Wilmington, N.C. 28401
(919) 763-9793

UNREGULATED VOLATILE SYNTHETIC ORGANIC CHEMICALS
(VOCs)

LABORATORY ID#: 3 7 7 2 1
WATER SYSTEM ID#: 0 4 - 6 7 - 0 4 2 COUNTY: Onslow
NAME OF SYSTEM: Marine Corps Air Station-New River
TYPE OF SAMPLE: E (D=Distribution, W=Source, E=Entry, S=Special)
COLLECTED ON: DATE: 12 / 23 / 87 (MM/DD/YY) TIME: 10 : 10 A M (HH:MM XM)
LOCATION WHERE COLLECTED: AS-110 Distribution Pump @ Plant
COLLECTED BY: EC & MS Laboratory LOCATION/SOURCE CODE:
MAIL RESULTS TO:
Commanding General Attn: NREAD
Marine Corps Base
Camp Lejeune, NC 28542
TELEPHONE # (919) 451-5977

TYPE OF SUPPLY:
 COMMUNITY
 MNC
 NON-COMMUNITY
 PRIVATE

WATER SOURCE(S):
 GROUND
 SURFACE
 PURCHASED

CONTAM CODE	NAME	METHOD CODE	RESULTS
****	*****	*****	***.*****
2210	Chloromethane, mg/l	<u>2 1 6</u>	L <u>0.0005</u>
2214	Bromomethane, mg/l	<u>2 1 6</u>	L <u>0.0005</u>
2216	Chloroethane, mg/l	<u>2 1 6</u>	L <u>0.0005</u>
2228	1,3-Dichloropropene, mg/l	<u>2 1 6</u>	L <u>0.0005</u>
2380	cis-1,2-Dichloroethylene, mg/l	<u>2 1 6</u>	L <u>0.0005</u>
2408	Dibromomethane, mg/l	<u>2 1 6</u>	L <u>0.0005</u>
2410	1,1-Dichloropropene, mg/l	<u>2 1 6</u>	L <u>0.0005</u>
2412	1,3-Dichloropropane, mg/l	<u>2 1 6</u>	L <u>0.0005</u>
2414	1,2,3-Trichloropropane, mg/l	<u>2 1 6</u>	L <u>0.0005</u>
2416	2,2-Dichloropropane, mg/l	<u>2 1 6</u>	L <u>0.0005</u>

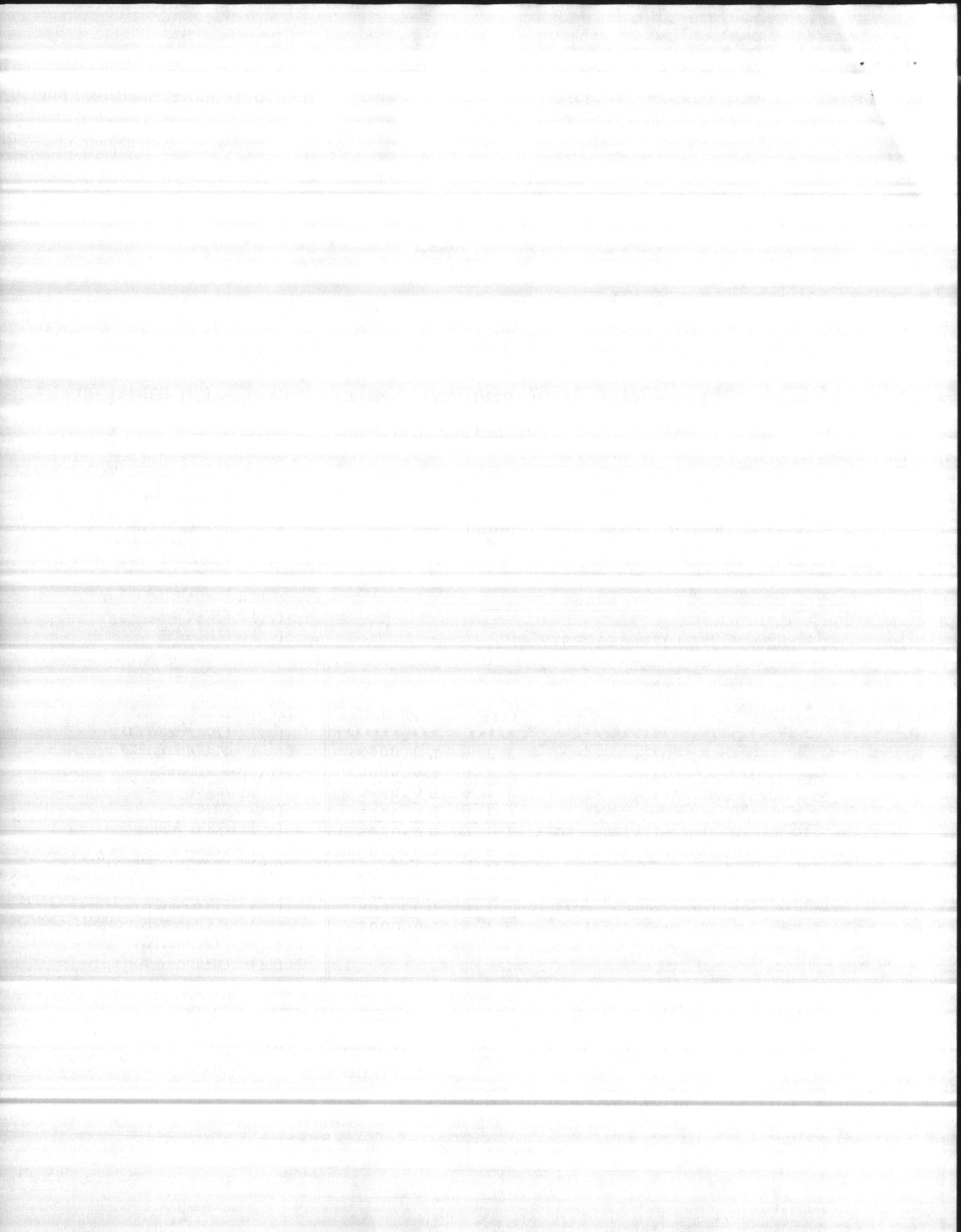
TYPE TREATMENT:
 NONE
 CHLORINATED
 FLUORIDATED
 FILTERED
 ALUM
 LIME
 SODA ASH
 CAUSTIC
 WATER SOFTENER
 POTASSIUM PERMANGANATE
 PHOSPHATE, IRON CONTROL
 PHOSPHATE, MANG. CONTROL
 PHOSPHATE, CORR. CONTROL
 OTHER Aeration

SAMPLE UNSATISFACTORY ()
DATE ANALYSES BEGUN: 12 24 87

RESAMPLE REQUESTED ()
DATE ANALYSES COMPLETED: 11 05 88
CERTIFIED BY: Bruce Babson

COMMENTS: SEE ATTACHED LIST FOR ADDITIONAL RESULTS

87W8817.



UNREGULATED VOCs (Continued)

LABORATORY ID#: 3 7 7 2 1

WATER SYSTEM ID#: 0 4 - 6 7 - 0 4 2

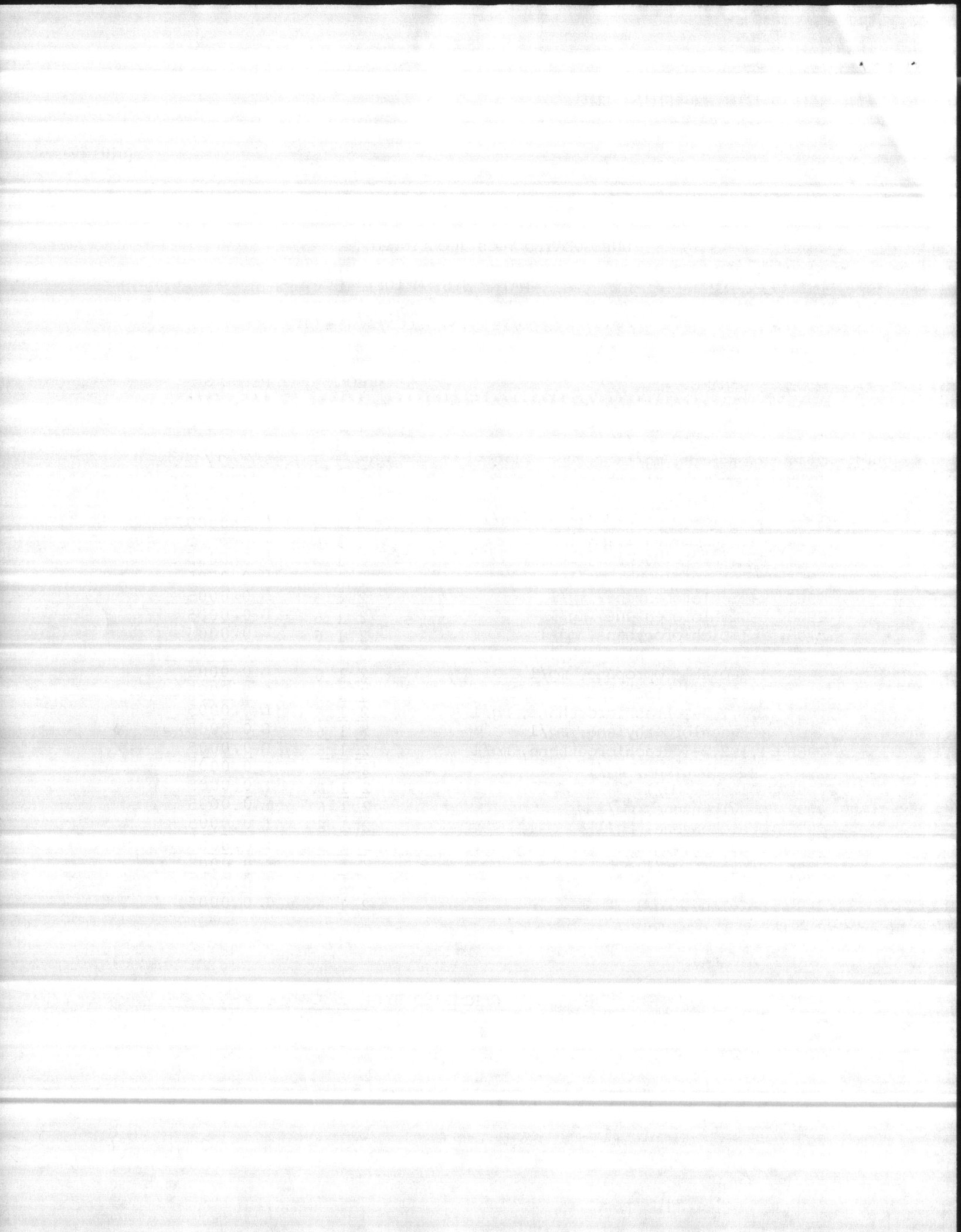
COLLECTION DATE: 1 2 / 2 3 / 8 7 (MM/DD/YY)

LOCATION/SOURCE CODE:

CONTAM CODE	NAME	METHOD CODE	RESULTS
****	*****	****	***.*****
2931	1,2-Dibromo-3-Chloropropane (DBCP), mg/l	2 1 9	L 0.00002
2941	Chloroform, mg/l	2 1 5	0.0024
2942	Bromoform, mg/l	2 1 5	0.0163
2943	Bromodichloromethane, mg/l	2 1 5	0.0053
2944	Chlorodibromomethane, mg/l	2 1 5	0.0143
2946	Ethylene dibromide (EDB), mg/l	2 1 9	L 0.00002
2964	Dichloromethane, mg/l	2 1 6	L 0.0005
2965	o-Chlorotoluene, mg/l	2 1 6	L 0.0005
2966	p-Chlorotoluene, mg/l	2 1 6	L 0.0005
2967	m-Dichlorobenzene, mg/l	2 1 6	L 0.0005
2968	o-Dichlorobenzene, mg/l	2 1 6	L 0.0005
2978	1,1-Dichloroethane, mg/l	2 1 6	L 0.0005
2979	trans-1,2-Dichloroethylene, mg/l	2 1 6	L 0.0005
2983	1,2-Dichloropropane, mg/l	2 1 6	L 0.0005
2985	1,1,2-Trichloroethane, mg/l	2 1 6	L 0.0005
2986	1,1,1,2-Tetrachloroethane, mg/l	2 1 6	L 0.0005
2987	Tetrachloroethylene, mg/l	2 1 6	L 0.0005
2988	1,1,2,2-Tetrachloroethane, mg/l	2 1 6	L 0.0005
2989	Chlorobenzene, mg/l	2 1 6	L 0.0005
2991	Toluene, mg/l	2 1 6	L 0.0005
2992	Ethylbenzene, mg/l	2 1 6	L 0.0005
2993	Bromobenzene, mg/l	2 1 6	L 0.0005
2995	m-Xylene, mg/l	2 1 6	L 0.0005
2996	Styrene, mg/l	2 1 6	L 0.0005
2997	o-Xylene, mg/l	2 1 6	L 0.0005
2999	p-Xylene, mg/l	2 1 6	L 0.0005

CERTIFIED BY: Bruce Babson

8708817.3



VOLATILE SYNTHETIC ORGANIC CHEMICALS
 (VOCs)

LABORATORY ID#: 3 7 7 2 1
 WATER SYSTEM ID#: 04-67-043 COUNTY: INSLOW
 NAME OF SYSTEM: HOLCOMB Blvd Water System
 TYPE OF SAMPLE: E (D=Distribution, W=Source, E=Entry, S=Special)
 COLLECTED ON: DATE: 12/23/87 (MM/DD/YY) TIME: 10:59 A M (HH:MM XM)
 COLLECTED BY: EC & MS LABORATORY LOCATION/SOURCE CODE: _____
 LOCATION WHERE COLLECTED: Bldg 670 Dist. Pump @ PLANT
 MAIL RESULTS TO: Commanding General ATTN: NREAD
MARINE CORPS BASE
Camp Lejeune, NC 28542
 TELEPHONE # (919) 451-5977

TYPE OF SUPPLY:
 COMMUNITY
 NINC
 NON-COMMUNITY
 PRIVATE

WATER SOURCE(S):
 GROUND
 SURFACE
 PURCHASED

CONTAM CODE	NAME	METHOD CODE	RESULTS	ALLOW. LIMITS
****	*****	****	***.*****	*****
2969	p-DICHLOROBENZENE, mg/l	2 16	L 0.0005	0.0750
2976	VINYL CHLORIDE, mg/l	2 16	L 0.0005	0.0020
2977	1,1-DICHLOROETHYLENE, mg/l	2 16	L 0.0005	0.0070
2980	1,2-DICHLOROETHANE, mg/l	2 16	L 0.0005	0.0050
2981	1,1,1-TRICHLOROETHANE, mg/l	2 16	L 0.0005	0.2000
2982	CARBON TETRACHLORIDE, mg/l	2 16	L 0.0005	0.0050
2984	TRICHLOROETHYLENE, mg/l	2 16	L 0.0005	0.0050
2990	BENZENE, mg/l	2 16	L 0.0005	0.0050

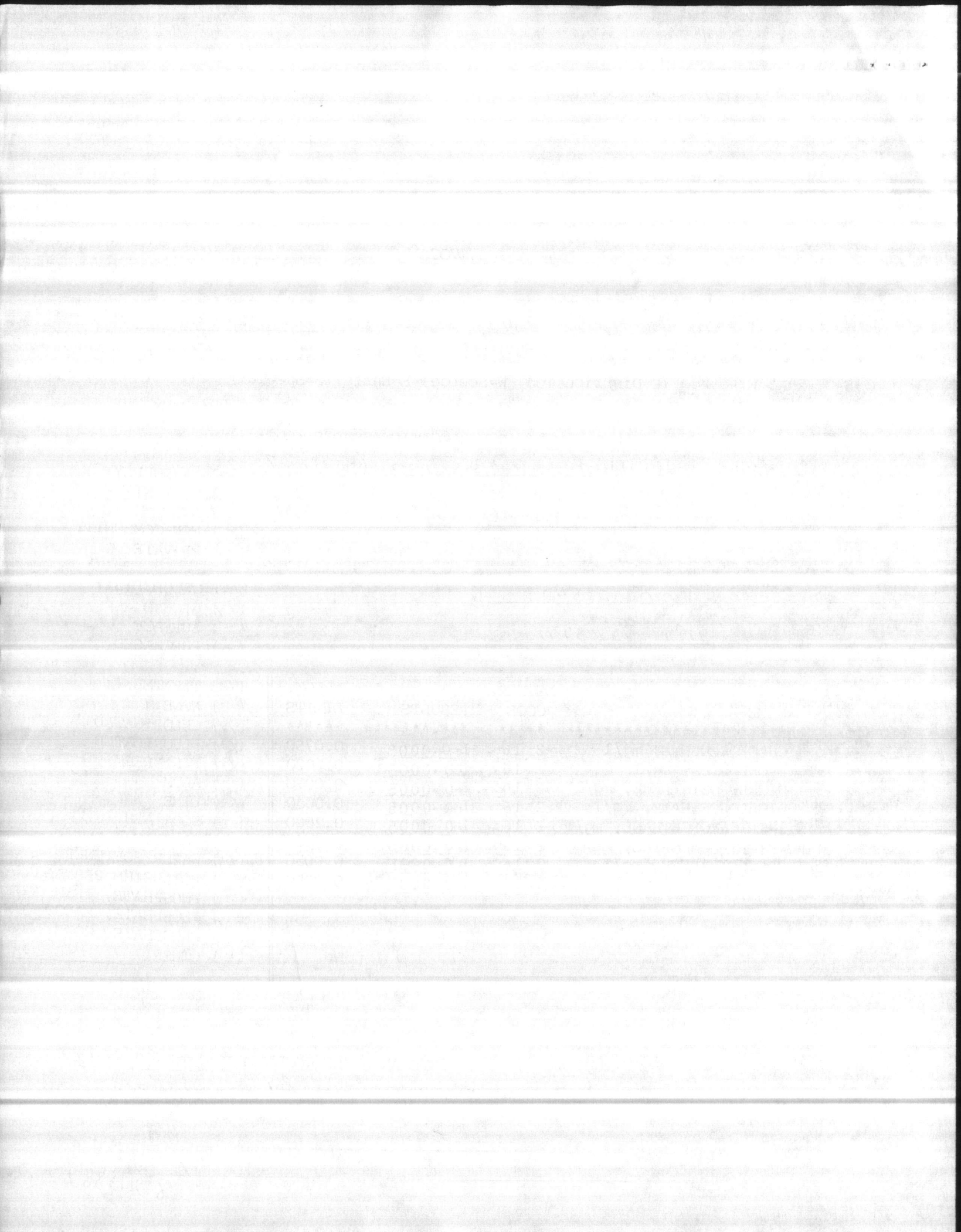
TYPE TREATMENT:
 NONE
 CHLORINATED
 FLUORIDATED
 FILTERED
 ALUM
 LIME
 SODA ASH
 CAUSTIC
 WATER SOFTENER
 POTASSIUM PERMANGANATE
 PHOSPHATE, IRON CONT
 PHOSPHATE, MANG. CONT
 PHOSPHATE, CORR. CONT
 OTHER

SAMPLE UNSATISFACTORY ()
 DATE ANALYSES BEGUN: 12/24/87

RESAMPLE REQUESTED ()
 DATE ANALYSES COMPLETED: 01/10/88
 CERTIFIED BY: Bruce Babson

COMMENTS:

87W8817.2



UNREGULATED VOLATILE SYNTHETIC ORGANIC CHEMICALS
 (VOCs)

LABORATORY ID#: 3 7 7 2 1
 WATER SYSTEM ID#: 0 4 - 6 7 - 0 4 3 COUNTY: Onslow
 NAME OF SYSTEM: Holcomb Blvd Water System
 TYPE OF SAMPLE: E (D=Distribution, W=Source, E=Entry, S=Special)
 COLLECTED ON: DATE: 12 / 23 / 87 (MM/DD/YY) TIME: 10 : 59 AM (HH:MM XM)
 LOCATION WHERE COLLECTED: Bldg 670 Distribution Pump @ Plant
 COLLECTED BY: EC & MS Laboratory LOCATION/SOURCE CODE:

MAIL RESULTS TO:
Commanding General Attn: NREAD
Marine Corps Base
Camp Lejeune, NC 28542
 TELEPHONE # (919) 451-5977

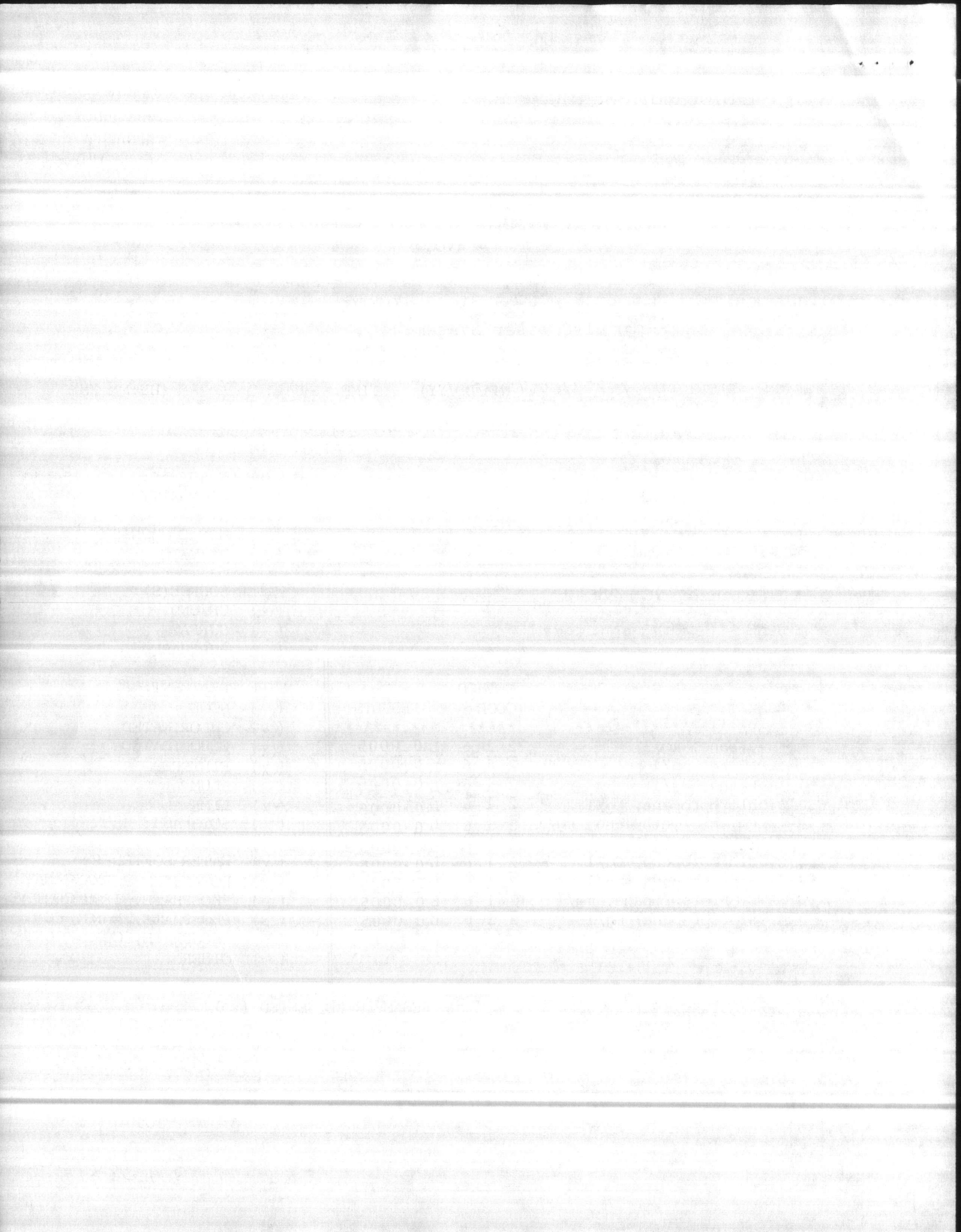
TYPE OF SUPPLY:
 COMMUNITY
 NTNC
 NON-COMMUNITY
 PRIVATE
 WATER SOURCE(S):
 GROUND
 SURFACE
 PURCHASED

CONTAM CODE	NAME	METHOD CODE	RESULTS
****	*****	*****	***.*****
2210	Chloromethane, mg/l	2 1 6	L 0.0005
2214	Bromomethane, mg/l	2 1 6	L 0.0005
2216	Chloroethane, mg/l	2 1 6	L 0.0005
2228	1,3-Dichloropropene, mg/l	2 1 6	L 0.0005
2380	cis-1,2-Dichloroethylene, mg/l	2 1 6	L 0.0005
2408	Dibromomethane, mg/l	2 1 6	L 0.0005
2410	1,1-Dichloropropene, mg/l	2 1 6	L 0.0005
2412	1,3-Dichloropropane, mg/l	2 1 6	L 0.0005
2414	1,2,3-Trichloropropane, mg/l	2 1 6	L 0.0005
2416	2,2-Dichloropropane, mg/l	2 1 6	L 0.0005

TYPE TREATMENT:
 NONE
 CHLORINATED
 FLUORIDATED
 FILTERED
 ALUM
 LIME
 SODA ASH
 CAUSTIC
 WATER SOFTENER
 POTASSIUM PERMANGANATE
 PHOSPHATE, IRON CONTROL
 PHOSPHATE, MANG. CONTROL
 PHOSPHATE, CORR. CONTROL
 OTHER _____

SAMPLE UNSATISFACTORY () RESAMPLE REQUESTED ()
 DATE ANALYSES BEGUN: 12/24/87 DATE ANALYSES COMPLETED: 01/05/88
 CERTIFIED BY: Bruce Babson

COMMENTS: SEE ATTACHED LIST FOR ADDITIONAL RESULTS



UNREGULATED VOCs (Continued)

LABORATORY ID#: 3 7 7 2 1

WATER SYSTEM ID#: 0 4 - 6 7 - 0 4 3

COLLECTION DATE: 1 2 / 2 3 / 8 7 (MM/DD/YY)

LOCATION/SOURCE CODE:

CONTAM CODE	NAME	METHOD CODE	RESULTS
****	*****	****	***.*****
2931	1,2-Dibromo-3-Chloropropane (DBCP), mg/l	2 1 9	L 0.00002
2941	Chloroform, mg/l	2 1 5	0.00061
2942	Bromoform, mg/l	2 1 5	0.00006
2943	Bromodichloromethane, mg/l	2 1 5	0.00060
2944	Chlorodibromomethane, mg/l	2 1 5	0.00043
2946	Ethylene dibromide (EDB), mg/l	2 1 9	L 0.00002
2964	Dichloromethane, mg/l	2 1 6	L 0.0005
2965	o-Chlorotoluene, mg/l	2 1 6	L 0.0005
2966	p-Chlorotoluene, mg/l	2 1 6	L 0.0005
2967	m-Dichlorobenzene, mg/l	2 1 6	L 0.0005
2968	o-Dichlorobenzene, mg/l	2 1 6	L 0.0005
2978	1,1-Dichloroethane, mg/l	2 1 6	L 0.0005
2979	trans-1,2-Dichloroethylene, mg/l	2 1 6	L 0.0005
2983	1,2-Dichloropropane, mg/l	2 1 6	L 0.0005
2985	1,1,2-Trichloroethane, mg/l	2 1 6	L 0.0005
2986	1,1,1,2-Tetrachloroethane, mg/l	2 1 6	L 0.0005
2987	Tetrachloroethylene, mg/l	2 1 6	L 0.0005
2988	1,1,2,2-Tetrachloroethane, mg/l	2 1 6	L 0.0005
2989	Chlorobenzene, mg/l	2 1 6	L 0.0005
2991	Toluene, mg/l	2 1 6	L 0.0005
2992	Ethylbenzene, mg/l	2 1 6	L 0.0005
2993	Bromobenzene, mg/l	2 1 6	L 0.0005
2995	m-Xylene, mg/l	2 1 6	L 0.0005
2996	Styrene, mg/l	2 1 6	L 0.0005
2997	o-Xylene, mg/l	2 1 6	L 0.0005
2999	p-Xylene, mg/l	2 1 6	L 0.0005

CERTIFIED BY: Pruce Babson

9708817.2

