

## FILE FOLDER

### DESCRIPTION ON TAB:

11330.1 CATHODIC PROTECTION

---

- Outside/inside of actual folder did not contain hand written information
- Outside/inside of actual folder did contain hand written information  
\*Scanned as next image

11330.1 CATHODIC PROTECTION Shop 83

OPEN

CLOSED

JANUARY 1987 - DESTROY

TEMP. SECNAVINST 5212.5B, Part II,  
Chap. 11, par. 11300(2) 2 years

M. C. Stationery

	1	
yellow ladder	1	(Bldg 1)
white manifold	1	(opms) BCC
green manifold	1	(Comin.)
2 pink manifold	2	(Col. secy) Ruth
green manifold	1	(Sally's)

11330  
MAIN

**From:** Commanding General, Marine Corps Base, Camp Lejeune, North Carolina 28542-5001

**To:** Commander, Atlantic Division, Naval Facilities Engineering Command, Norfolk, Virginia 23511 (Attn: Karl D. Liebrich, Code 10284)

**Subj:** CATHODIC PROTECTION

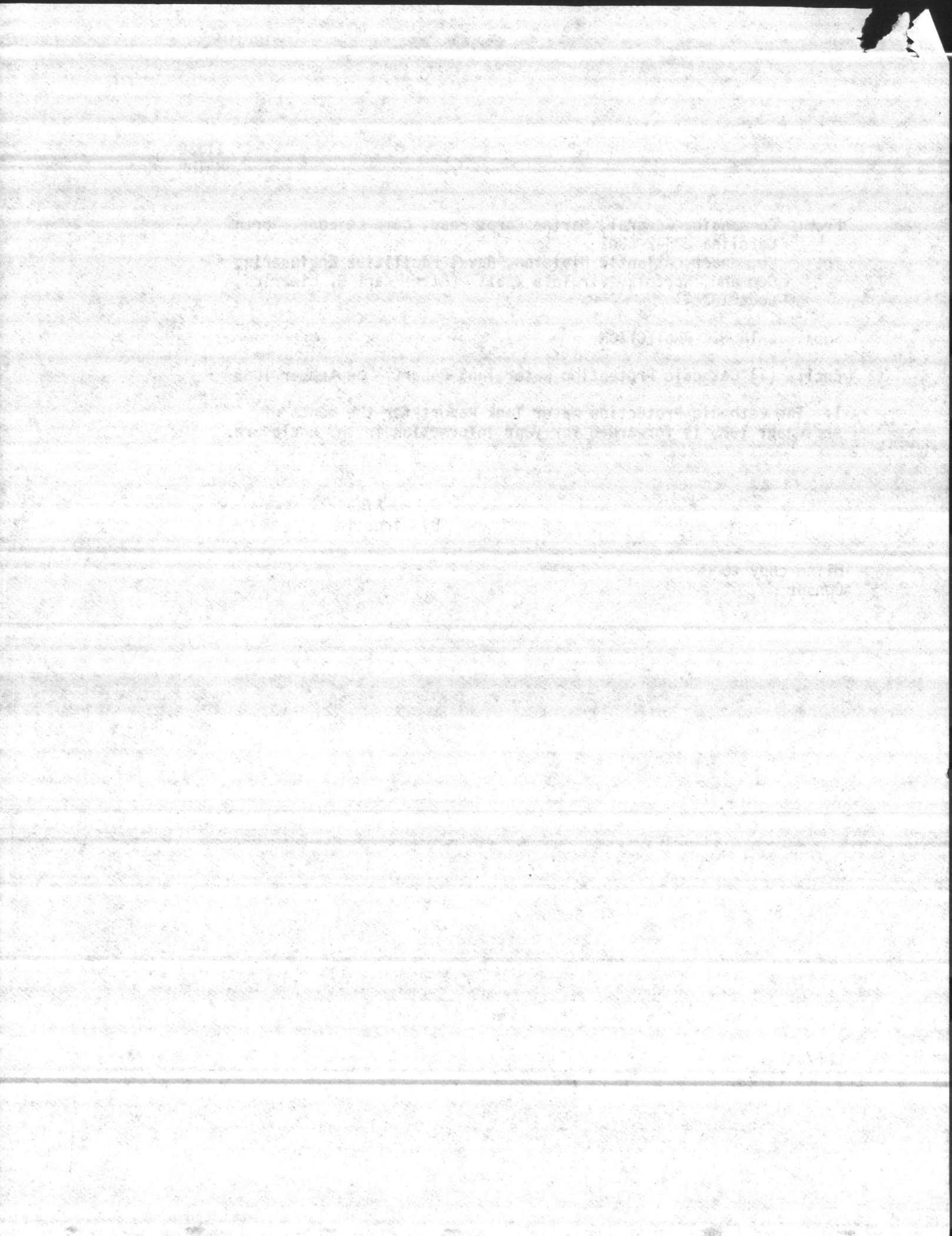
**Encl:** (1) Cathodic Protection Water Tank Report - September 1985

1. The Cathodic Protection Water Tank Report for the month of September 1985 is forwarded for your information in the enclosure.

W. M. RICE  
By direction

Blind copy to  
OpnsBr

BMF/shk  
1 Oct 1985



22 AUG 1985

# CATHODIC PROTECTION RECTIFIER RECORD

## ACTIVITY

SEPT 85

RECTIFIER	TAP SETTING		AC INPUT		FIRST DC OUTPUT		SECOND DC OUTPUT		THIRD DC OUTPUT		REMARKS
	COURSE	FINE	VOLTS	AMPS	VOLTS	AMPS	VOLTS	AMPS	VOLTS	AMPS	
S830	A	3	220	6	5	0.6	5	0.1			
STT40	A	3	115	5.2	2	0.5	2	0.1			
STC 1070	A	1	115	24	1	0.4	1	0.1			
STC 606	A	3	115	7.2	2	0.7	2	0.2			
SBB 25	A	1	110	10	2	0.6	2	0.1			
SRR 44	A	3	115	11.3	2	0.7	2	0.1			
SBA 108	A	4	115	15	4	1.2	4	0.4			
SM 624	A	4	115	2.5	1.5	0.4	1.5	0.15			
S1000	A	4	115	11.3	3	0.8	3	0.2			
S29	A	1	110	6.6	1	0.8	1	0.3			
S5	A	3	110	3.3	1	0.7	1	0.2			
S2323	A	3	115	11.3	2	0.7	2	0.2			
4004	A	3	115	11.3	2.5	0.5	2.5	0.1			
SFC 314	B	2	115	5.8	3	0.8	3	0.2			
MCAS 310	A	2	115	7.3	3	1.1	3	0.3			
MCAS 4130	A	2	120	23	2	1.2	2	0.25			

FIRST DC OUTPUT:

SECOND DC OUTPUT:

THIRD DC OUTPUT:

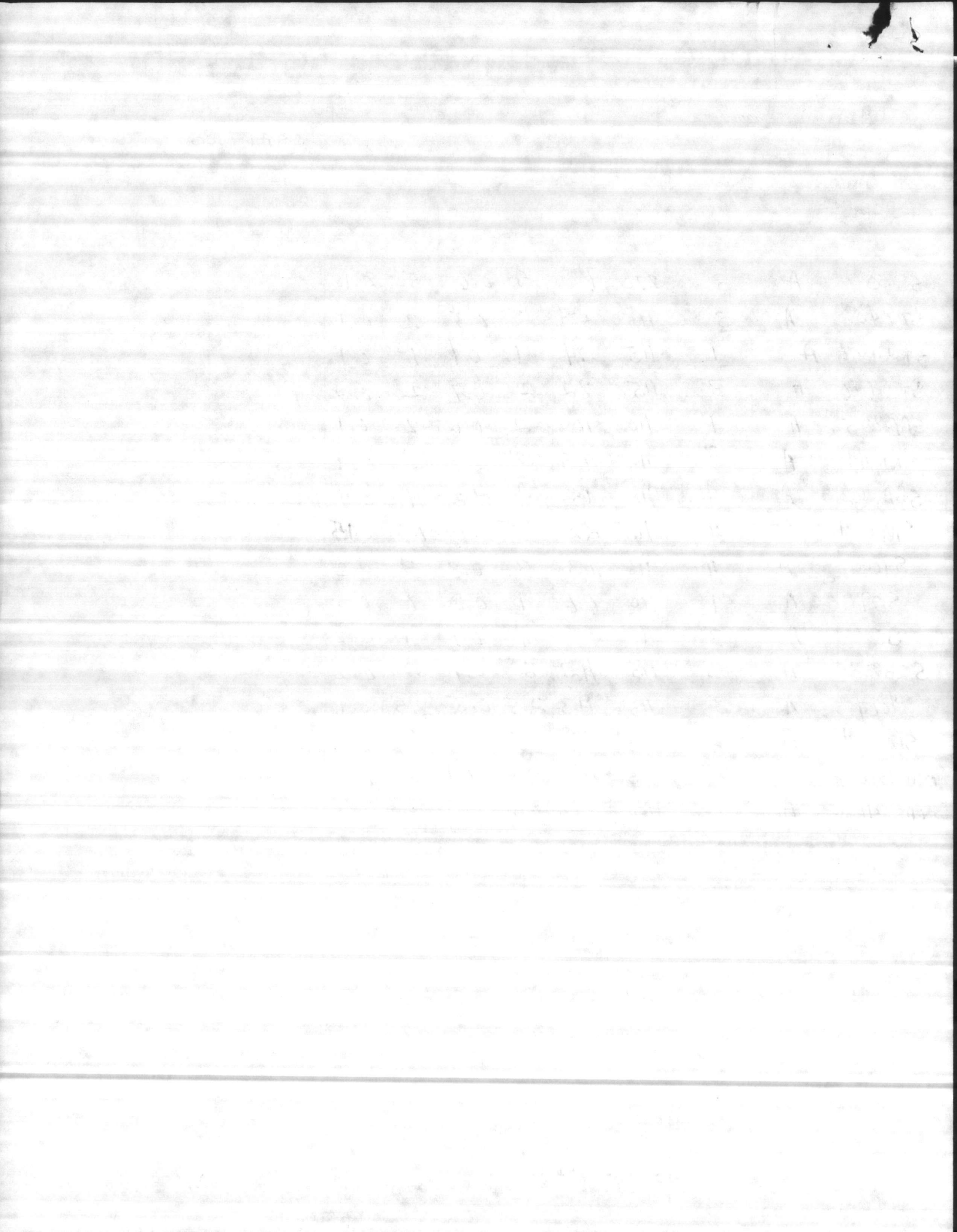
GENERAL COMMENTS:

SIGNATURE OF INSPECTOR

*Ronnie C. Vilk*

DATE

*30 Sept 85*



22 AUG 1985

# CATHODIC PROTECTION RECTIFIER RECORD

1 October 1985

## ACTIVITY

Water Treatment Section, Utilities Branch, Base Maintenance Division, MCB, Camp Lejeune, N.C.

RECTIFIER	TAP SETTING		AC INPUT		FIRST DC OUTPUT		SECOND DC OUTPUT		THIRD DC OUTPUT		REMARKS
	COURSE	FINE	VOLTS	AMPS	VOLTS	AMPS	VOLTS	AMPS	VOLTS	AMPS	
S-830	A	3	220	6	5	0.6	5	0.1			
STT-40	A	3	115	5.2	2	0.5	2	0.1			
STC-1070	A	1	115	24	1	0.4	1	0.1			
STC-606	A	3	115	7.2	2	0.7	2	0.2			
SBB-25	A	1	110	10	2	0.6	2	0.1			
SRR-44	A	3	115	11.3	2	0.7	2	0.1			
SBA-108	A	4	115	15	4	1.2	4	0.4			
SM-624	A	4	115	2.5	1.5	0.4	1.5	0.15			
S-1000	A	4	115	11.3	3	0.8	3	0.2			
S-29	A	1	110	6.6	1	0.8	1	0.3			
S-5	A	3	110	3.3	1	0.7	1	0.2			
S-2323	A	3	115	11.3	2	0.7	2	0.2			
LCH-4004	A	3	115	11.3	2.5	0.5	2.5	0.1			
SFC-314	B	2	115	5.8	3	0.8	3	0.2			
MCAS-310	A	2	115	7.3	3	1.1	3	0.3			
MCAS-4130	A	2	120	23	2	1.2	2	0.25			

FIRST DC OUTPUT:

SECOND DC OUTPUT:

THIRD DC OUTPUT:

GENERAL COMMENTS:

SIGNATURE OF INSPECTOR

DATE





11330  
MAIN

**From:** Commanding General, Marine Corps Base, Camp Lejeune, North  
Carolina 28542-5001  
**To:** Commander, Atlantic Division, Naval Facilities Engineering  
Command, Norfolk, Virginia 23511 (Attn: Karl D. Liebrich,  
Code 10284)

**Subj:** CATHODIC PROTECTION

**Encl:** (1) Cathodic Protection Water Tank Report - August 1985

1. The Cathodic Protection Water Tank Report for the month of  
August 1985 is forwarded for your information in the enclosure.

W. M. RICE  
By direction

Blind copy to  
OpnsBr

BMF/shk  
26 Aug 1985

1954  
The following information was obtained from the files of the  
Department of the Interior, Bureau of Land Management, on  
the subject of the proposed project in the State of  
California.

The proposed project is located in the State of  
California, and is situated on the lands of the  
Bureau of Land Management.

Very truly yours,  
[Signature]

CATHODIC PROTECTION WATER TANK REPORT

AUGUST 1985

<u>LOCATION</u>	<u>BLDG NO.</u>	<u>CKT.1</u>	<u>CKT.2</u>	<u>DC VOLTS</u>
CAPEHART	S-830	1.0	0.2	4
TARAWA TERRACE	STT-40	0.5	0.1	3.5
CAMP GEIGER	STC-1070	0.5	0.1	2
CAMP GEIGER	STC-606	0.8	0.3	2
COURTHOUSE BAY	SBB-25	1.2	0.3	3
RIFLE RANGE	SRR-44	0.8	0.2	2.5
ONSLow BEACH	SBA-108	1.2	0.3	5.5
MONTFORD POINT	SM-624	0.4	0.1	2
INDUSTRIAL AREA	S-1000	0.7	0.3	3.5
AREA NO. 5	S-29	0.8	0.3	2
AREA NO. 2	S-5	0.8	0.2	4
PARADISE POINT	S-2323	0.7	0.2	4
MIDWAY PARK	S-4004	1.2	0.3	3
FORCE TROOPS	SFC-314	0.8	0.3	5.5
MCAS	S-4130	1.5	0.3	3.5
MCAS	S-310	1.3	0.3	3.5

ENCL (1)

THE UNIVERSITY OF CHICAGO

1960-1961

NAME	RESIDENCE	DEGREE	DEGREE
ALLEN, RICHARD	CHICAGO, ILL.	B.S.	1958
ANDERSON, JOHN	CHICAGO, ILL.	B.S.	1959
ARMSTRONG, ROBERT	CHICAGO, ILL.	B.S.	1960
AUSTIN, JAMES	CHICAGO, ILL.	B.S.	1961
BANKS, WILLIAM	CHICAGO, ILL.	B.S.	1962
BARNETT, ROBERT	CHICAGO, ILL.	B.S.	1963
BARTON, JOHN	CHICAGO, ILL.	B.S.	1964
BELMONT, ROBERT	CHICAGO, ILL.	B.S.	1965
BENNETT, JOHN	CHICAGO, ILL.	B.S.	1966
BERRY, ROBERT	CHICAGO, ILL.	B.S.	1967
BIRCH, JOHN	CHICAGO, ILL.	B.S.	1968
BLOOM, ROBERT	CHICAGO, ILL.	B.S.	1969
BLOOM, ROBERT	CHICAGO, ILL.	B.S.	1970
BLOOM, ROBERT	CHICAGO, ILL.	B.S.	1971
BLOOM, ROBERT	CHICAGO, ILL.	B.S.	1972
BLOOM, ROBERT	CHICAGO, ILL.	B.S.	1973
BLOOM, ROBERT	CHICAGO, ILL.	B.S.	1974
BLOOM, ROBERT	CHICAGO, ILL.	B.S.	1975
BLOOM, ROBERT	CHICAGO, ILL.	B.S.	1976
BLOOM, ROBERT	CHICAGO, ILL.	B.S.	1977
BLOOM, ROBERT	CHICAGO, ILL.	B.S.	1978
BLOOM, ROBERT	CHICAGO, ILL.	B.S.	1979
BLOOM, ROBERT	CHICAGO, ILL.	B.S.	1980
BLOOM, ROBERT	CHICAGO, ILL.	B.S.	1981
BLOOM, ROBERT	CHICAGO, ILL.	B.S.	1982
BLOOM, ROBERT	CHICAGO, ILL.	B.S.	1983
BLOOM, ROBERT	CHICAGO, ILL.	B.S.	1984
BLOOM, ROBERT	CHICAGO, ILL.	B.S.	1985
BLOOM, ROBERT	CHICAGO, ILL.	B.S.	1986
BLOOM, ROBERT	CHICAGO, ILL.	B.S.	1987
BLOOM, ROBERT	CHICAGO, ILL.	B.S.	1988
BLOOM, ROBERT	CHICAGO, ILL.	B.S.	1989
BLOOM, ROBERT	CHICAGO, ILL.	B.S.	1990
BLOOM, ROBERT	CHICAGO, ILL.	B.S.	1991
BLOOM, ROBERT	CHICAGO, ILL.	B.S.	1992
BLOOM, ROBERT	CHICAGO, ILL.	B.S.	1993
BLOOM, ROBERT	CHICAGO, ILL.	B.S.	1994
BLOOM, ROBERT	CHICAGO, ILL.	B.S.	1995
BLOOM, ROBERT	CHICAGO, ILL.	B.S.	1996
BLOOM, ROBERT	CHICAGO, ILL.	B.S.	1997
BLOOM, ROBERT	CHICAGO, ILL.	B.S.	1998
BLOOM, ROBERT	CHICAGO, ILL.	B.S.	1999
BLOOM, ROBERT	CHICAGO, ILL.	B.S.	2000
BLOOM, ROBERT	CHICAGO, ILL.	B.S.	2001
BLOOM, ROBERT	CHICAGO, ILL.	B.S.	2002
BLOOM, ROBERT	CHICAGO, ILL.	B.S.	2003
BLOOM, ROBERT	CHICAGO, ILL.	B.S.	2004
BLOOM, ROBERT	CHICAGO, ILL.	B.S.	2005
BLOOM, ROBERT	CHICAGO, ILL.	B.S.	2006
BLOOM, ROBERT	CHICAGO, ILL.	B.S.	2007
BLOOM, ROBERT	CHICAGO, ILL.	B.S.	2008
BLOOM, ROBERT	CHICAGO, ILL.	B.S.	2009
BLOOM, ROBERT	CHICAGO, ILL.	B.S.	2010
BLOOM, ROBERT	CHICAGO, ILL.	B.S.	2011
BLOOM, ROBERT	CHICAGO, ILL.	B.S.	2012
BLOOM, ROBERT	CHICAGO, ILL.	B.S.	2013
BLOOM, ROBERT	CHICAGO, ILL.	B.S.	2014
BLOOM, ROBERT	CHICAGO, ILL.	B.S.	2015
BLOOM, ROBERT	CHICAGO, ILL.	B.S.	2016
BLOOM, ROBERT	CHICAGO, ILL.	B.S.	2017
BLOOM, ROBERT	CHICAGO, ILL.	B.S.	2018
BLOOM, ROBERT	CHICAGO, ILL.	B.S.	2019
BLOOM, ROBERT	CHICAGO, ILL.	B.S.	2020
BLOOM, ROBERT	CHICAGO, ILL.	B.S.	2021
BLOOM, ROBERT	CHICAGO, ILL.	B.S.	2022
BLOOM, ROBERT	CHICAGO, ILL.	B.S.	2023
BLOOM, ROBERT	CHICAGO, ILL.	B.S.	2024
BLOOM, ROBERT	CHICAGO, ILL.	B.S.	2025
BLOOM, ROBERT	CHICAGO, ILL.	B.S.	2026
BLOOM, ROBERT	CHICAGO, ILL.	B.S.	2027
BLOOM, ROBERT	CHICAGO, ILL.	B.S.	2028
BLOOM, ROBERT	CHICAGO, ILL.	B.S.	2029
BLOOM, ROBERT	CHICAGO, ILL.	B.S.	2030
BLOOM, ROBERT	CHICAGO, ILL.	B.S.	2031
BLOOM, ROBERT	CHICAGO, ILL.	B.S.	2032
BLOOM, ROBERT	CHICAGO, ILL.	B.S.	2033
BLOOM, ROBERT	CHICAGO, ILL.	B.S.	2034
BLOOM, ROBERT	CHICAGO, ILL.	B.S.	2035
BLOOM, ROBERT	CHICAGO, ILL.	B.S.	2036
BLOOM, ROBERT	CHICAGO, ILL.	B.S.	2037
BLOOM, ROBERT	CHICAGO, ILL.	B.S.	2038
BLOOM, ROBERT	CHICAGO, ILL.	B.S.	2039
BLOOM, ROBERT	CHICAGO, ILL.	B.S.	2040
BLOOM, ROBERT	CHICAGO, ILL.	B.S.	2041
BLOOM, ROBERT	CHICAGO, ILL.	B.S.	2042
BLOOM, ROBERT	CHICAGO, ILL.	B.S.	2043
BLOOM, ROBERT	CHICAGO, ILL.	B.S.	2044
BLOOM, ROBERT	CHICAGO, ILL.	B.S.	2045
BLOOM, ROBERT	CHICAGO, ILL.	B.S.	2046
BLOOM, ROBERT	CHICAGO, ILL.	B.S.	2047
BLOOM, ROBERT	CHICAGO, ILL.	B.S.	2048
BLOOM, ROBERT	CHICAGO, ILL.	B.S.	2049
BLOOM, ROBERT	CHICAGO, ILL.	B.S.	2050

CATHODIC PROTECTION WATER TANK REPORT

Aug 85

<u>LOCATION</u>	<u>BLDG NO.</u>	<u>CKT. 1</u>	<u>CKT. 2</u>	<u>DC VOLTS</u>
CAPEHART	S-830	<u>1.0</u>	<u>0.2</u>	<u>4</u>
TARAWA TERRACE	STT-40	<u>0.5</u>	<u>0.1</u>	<u>3.5</u>
CAMP GEIGER	STC-1070	<u>0.5</u>	<u>0.1</u>	<u>2</u>
CAMP GEIGER	STC-606	<u>0.8</u>	<u>0.3</u>	<u>2</u>
COURTHOUSE BAY	SBB-25	<del>0.8</del> <u>1.2</u>	<u>0.3</u>	<del>3.5</del> <u>3</u>
RIFLE RANGE	SRR-44	<u>0.8</u>	<u>0.2</u>	<u>2.5</u>
ONSLow BEACH	SBA-108	<u>1.2</u>	<u>0.3</u>	<u>5.5</u>
MONTFORD POINT	SM-624	<u>0.4</u>	<u>0.1</u>	<u>2</u>
INDUSTRIAL AREA	S-1000	<u>0.7</u>	<u>0.3</u>	<u>3.5</u>
AREA NO. 5	S-29	<u>0.8</u>	<u>0.3</u>	<del>2</del> <u>2</u>
AREA NO. 2	S-5	<u>0.8</u>	<u>0.2</u>	<u>4</u>
PARADISE POINT	S-2323	<u>0.7</u>	<u>0.2</u>	<u>4</u>
MIDWAY PARK	S-4004	<u>1.2</u>	<u>0.3</u>	<u>3</u>
FORCE TROOPS	SFC-314	<u>.8</u>	<u>0.3</u>	<u>5.5</u>
MCAS	S-4130	<u>1.5</u>	<u>0.3</u>	<u>3.5</u>
MCAS	S-310	<u>1.3</u>	<u>0.3</u>	<u>3.5</u>

1000

100

100

100

100

100

100

100

100

100

100

100

100

100

100

100

100

100

100

100

100

100

100

100

100

100

100

100

100

100

100

100

100

100

100

100

100

100

100

100

100

100

100

100

100

100

100

100

100

100

100

100

100

100

100

11330  
MAIN

From: Commanding General, Marine Corps Base, Camp Lejeune, North  
Carolina 28542-5001  
To: Commander, Atlantic Division, Naval Facilities Engineering  
Command, Norfolk, Virginia 23511 (Attn: Karl D. Liebrich,  
Code 10284)

Subj: CATHODIC PROTECTION

Encl: (1) Cathodic Protection Water Tank Report - July 85

1. The Cathodic Protection Water Tank Report for the month of July  
1985 is forwarded for your information in the enclosure.

W. M. RICE  
By direction

Blind copy to:  
OpnsBr

BMF/shk  
26 July 1985



... ..  
... ..  
... ..

... ..  
... ..  
... ..

...

... ..

CATHODIC PROTECTION WATER TANK REPORT

JULY 1985

<u>LOCATION</u>	<u>BLDG NO.</u>	<u>CKT.1</u>	<u>CKT.2</u>	<u>DC VOLTS</u>
CAPEHART	S-830	0.7	0.2	4
TARAWA TERRACE	STT-40	0.5	0.2	2
CAMP GEIGER	STC-1070	0.5	0.1	2
CAMP GEIGER	STC-606	0.7	0.3	2
COURTHOUSE BAY	SBB-25	1.2	0.2	3
RIFLE RANGE	SRR-44	0.8	0.2	2
ONSLow BEACH	SBA-108	1.2	0.3	5
MONTFORD POINT	SM-624	0.4	0.1	3
INDUSTRIAL AREA	S-1000	0.8	0.3	3
AREA NO. 5	S-29	0.8	0.2	2
AREA NO. 2	S-5	0.6	0.1	3.5
PARADISE POINT	S-2323	0.7	0.2	4
MIDWAY PARK	S-4004	1.0	0.2	2
FORCE TROOPS	SFC-314	0.6	0.2	6
MCAS	S-4130	1.3	0.3	4
MCAS	S-310	1.2	0.3	4

ENCL (1)

TABLE 1

Year	Value	Year	Value
1950	1.0	1955	1.5
1951	1.1	1956	1.6
1952	1.2	1957	1.7
1953	1.3	1958	1.8
1954	1.4	1959	1.9
1960	2.0	1964	2.5
1961	2.1	1965	2.6
1962	2.2	1966	2.7
1963	2.3	1967	2.8
1968	2.9	1969	3.0
1969	3.1	1970	3.2
1970	3.3	1971	3.4
1971	3.5	1972	3.6
1972	3.7	1973	3.8
1973	3.9	1974	4.0
1974	4.1	1975	4.2
1975	4.3	1976	4.4
1976	4.5	1977	4.6
1977	4.7	1978	4.8
1978	4.9	1979	5.0
1979	5.1	1980	5.2
1980	5.3	1981	5.4
1981	5.5	1982	5.6
1982	5.7	1983	5.8
1983	5.9	1984	6.0
1984	6.1	1985	6.2
1985	6.3	1986	6.4
1986	6.5	1987	6.6
1987	6.7	1988	6.8
1988	6.9	1989	7.0
1989	7.1	1990	7.2
1990	7.3	1991	7.4
1991	7.5	1992	7.6
1992	7.7	1993	7.8
1993	7.9	1994	8.0
1994	8.1	1995	8.2
1995	8.3	1996	8.4
1996	8.5	1997	8.6
1997	8.7	1998	8.8
1998	8.9	1999	9.0
1999	9.1	2000	9.2
2000	9.3	2001	9.4
2001	9.5	2002	9.6
2002	9.7	2003	9.8
2003	9.9	2004	10.0
2004	10.1	2005	10.2
2005	10.3	2006	10.4
2006	10.5	2007	10.6
2007	10.7	2008	10.8
2008	10.9	2009	11.0
2009	11.1	2010	11.2
2010	11.3	2011	11.4
2011	11.5	2012	11.6
2012	11.7	2013	11.8
2013	11.9	2014	12.0
2014	12.1	2015	12.2
2015	12.3	2016	12.4
2016	12.5	2017	12.6
2017	12.7	2018	12.8
2018	12.9	2019	13.0
2019	13.1	2020	13.2
2020	13.3	2021	13.4
2021	13.5	2022	13.6
2022	13.7	2023	13.8
2023	13.9	2024	14.0
2024	14.1	2025	14.2
2025	14.3	2026	14.4
2026	14.5	2027	14.6
2027	14.7	2028	14.8
2028	14.9	2029	15.0
2029	15.1	2030	15.2

CATHODIC PROTECTION WATER TANK REPORT

July 85

<u>LOCATION</u>	<u>BLDG NO.</u>	<u>CKT. 1</u>	<u>CKT. 2</u>	<u>DC VOLTS</u>
CAPEHART	S-830	<u>0.7</u>	<u>0.2</u>	<u>4</u>
TARAWA TERRACE	STT-40	<u>0.5</u>	<u>0.2</u>	<u>2</u>
CAMP GEIGER	STC-1070	<u>0.5</u>	<u>0.1</u>	<u>2</u>
CAMP GEIGER	STC-606	<u>0.7</u>	<u>0.3</u>	<u>2</u>
COURTHOUSE BAY	SBB-25	<u>1.2</u>	<u>0.2</u>	<u>3</u>
RIFLE RANGE	SRR-44	<u>0.8</u>	<u>0.2</u>	<u>2</u>
ONSLow BEACH	SBA-108	<u>1.2</u>	<u>0.3</u>	<u>5</u>
MONTFORD POINT	SM-624	<u>0.4</u>	<u>0.1</u>	<u>3</u>
INDUSTRIAL AREA	S-1000	<u>0.8</u>	<u>0.3</u>	<u>3</u>
AREA NO. 5	S-29	<u>0.8</u>	<u>0.2</u>	<u>2</u>
AREA NO. 2	S-5	<u>0.6</u>	<u>0.1</u>	<u>3.5</u>
PARADISE POINT	S-2323	<u>0.7</u>	<u>0.2</u>	<u>4</u>
MIDWAY PARK	S-4004	<u>1.0</u>	<u>0.2</u>	<u>2</u>
FORCE TROOPS	SFC-314	<u>0.6</u>	<u>0.2</u>	<u>6</u>
MCAS	S-4130	<u>1.3</u>	<u>0.3</u>	<u>4</u>
MCAS	S-310	<u>1.2</u>	<u>0.3</u>	<u>4</u>

1	10	10
2	10	10
3	10	10
4	10	10
5	10	10
6	10	10
7	10	10
8	10	10
9	10	10
10	10	10

1	10	10
2	10	10
3	10	10
4	10	10
5	10	10
6	10	10
7	10	10
8	10	10
9	10	10
10	10	10

11330  
MAIN

From: Commanding General, Marine Corps Base, Camp Lejeune, North  
Carolina 28542-5001  
To: Commander, Atlantic Division, Naval Facilities Engineering  
Command, Norfolk, Virginia 23511 (Attn: Karl D. Liebrich,  
Code 10284)

Subj: CATHODIC PROTECTION

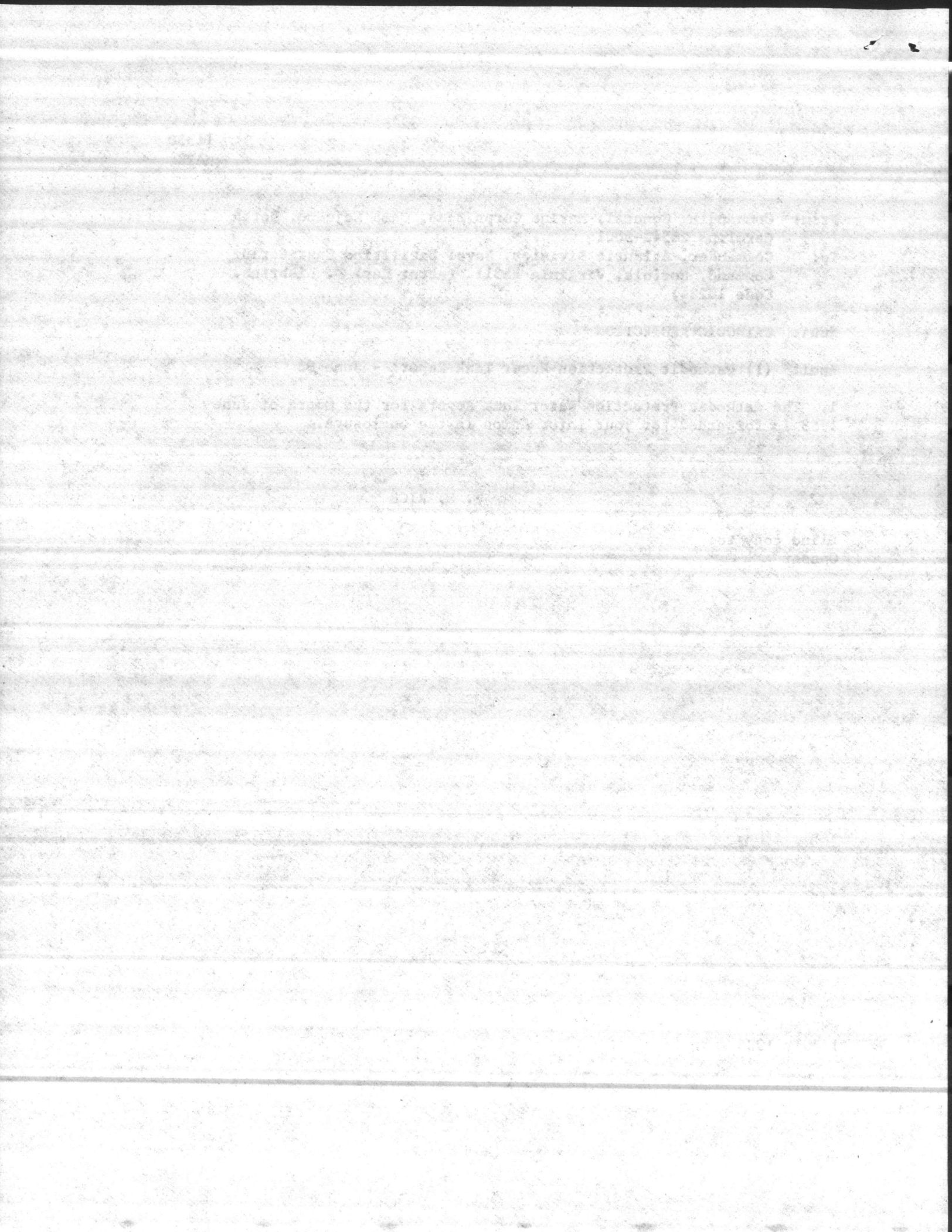
Encl: (1) Cathodic Protection Water Tank Report - June 85

1. The Cathodic Protection Water Tank Report for the month of June  
1985 is forwarded for your information in the enclosure.

W. M. RICE

Blind copy to:  
OpnsBr

BMF/shk  
1 July 1985



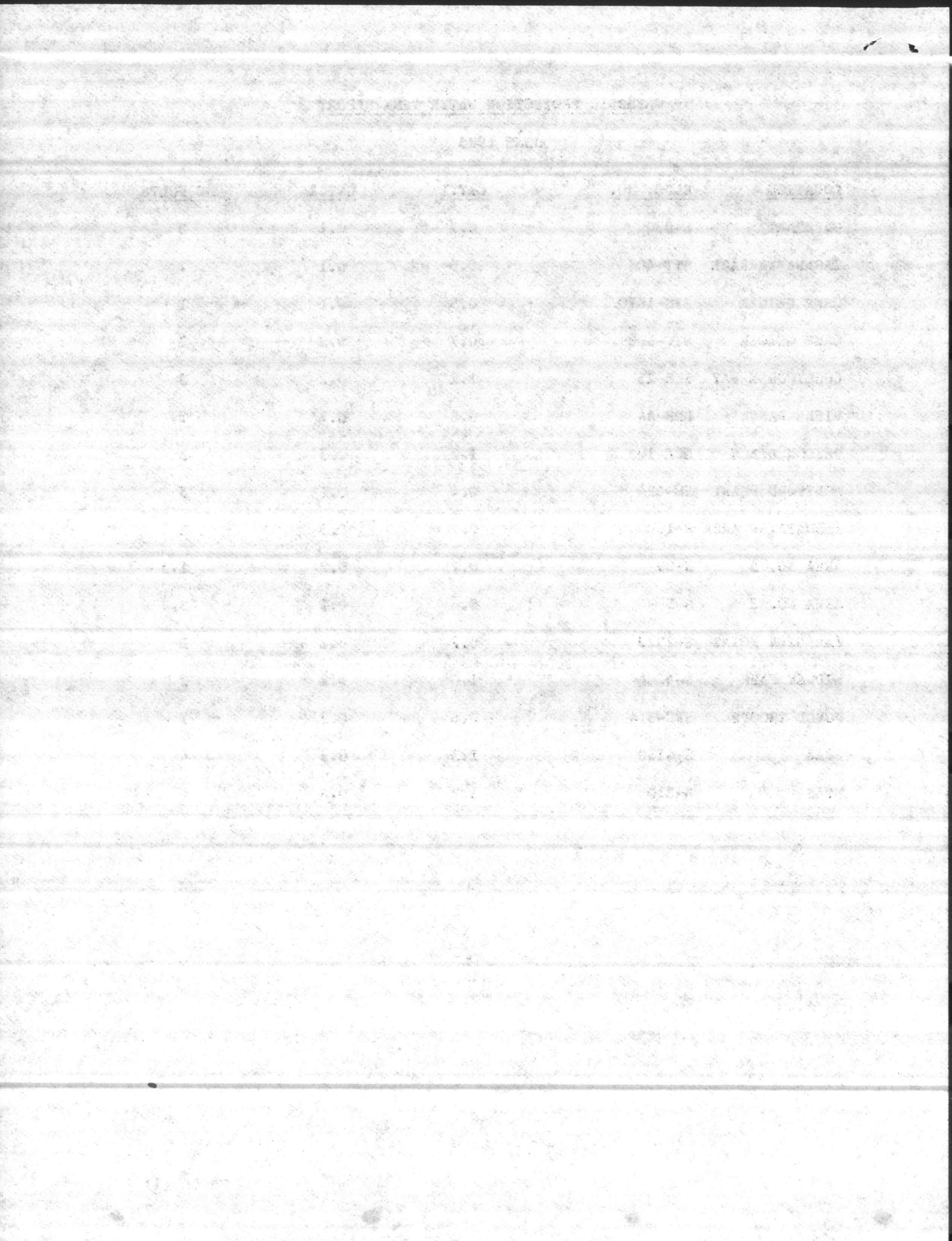
CATHODIC PROTECTION WATER TANK REPORT

JUNE 1985

<u>LOCATION</u>	<u>BLDG. NO.</u>	<u>CKT.1</u>	<u>CKT.2</u>	<u>DC VOLTS</u>
CAPEHART	S-830	0.7	0.1	5
TARAWA TERRACE	STT-40	0.5	0.1	2
CAMP GEIGER	STC-1070	0.5	0.1	1
CAMP GEIGER	STC-606	0.7	0.3	2
COURTHOUSE BAY	SBB-25	1.2	0.2	3
RIFLE RANGE	SRR-44	0.8	0.2	2
ONSLow BEACH	SBA-108	1.2	0.3	5
MONTFORD POINT	SM-624	0.4	0.1	3
INDUSTRIAL AREA	S-1000	0.7	0.3	3
AREA NO. 5	S-29	0.75	0.2	1.5
AREA NO. 2	S-5	0.6	0.1	3.5
PARADISE POINT	S-2323	0.7	0.2	5
MIDWAY PARK	S-4004	1.0	0.2	2
FORCE TROOPS	SFC-314	0.6	0.2	7
MCAS	S-4130	1.3	0.3	4
MCAS	S-310	1.2	0.3	4

ENCL (1)





CATHODIC PROTECTION WATER TANK REPORT

June 1985

<u>LOCATION</u>	<u>BLDG NO.</u>	<u>CKT. 1</u>	<u>CKT. 2</u>	<u>DC VOLTS</u>
CAPEHART	S-830	<u>0.7</u>	<u>0.1</u>	<u>5 VDC</u>
TARAWA TERRACE	STT-40	<u>0.5</u>	<u>0.1</u>	<u>2 VDC</u>
CAMP GEIGER	STC-1070	<u>0.5</u>	<u>0.1</u>	<u>1 VDC</u>
CAMP GEIGER	STC-606	<u>0.7</u>	<u>0.3</u>	<u>2 VDC</u>
COURTHOUSE BAY	SBB-25	<u>1.2</u>	<u>0.2</u>	<u>3 VDC</u>
RIFLE RANGE	SRR-44	<u>0.8</u>	<u>0.2</u>	<u>2 VDC</u>
ONSLOW BEACH	SBA-108	<u>1.2</u>	<u>0.3</u>	<u>5 VDC</u>
MONTFORD POINT	SM-624	<u>0.4</u>	<u>0.1</u>	<u>3 VDC</u>
INDUSTRIAL AREA	S-1000	<u>0.7</u>	<u>0.3</u>	<u>3 VDC</u>
AREA NO. 5	S-29	<u>0.75</u>	<u>0.2</u>	<u>1.5 VDC</u>
AREA NO. 2	S-5	<u>0.6</u>	<u>0.1</u>	<u>3.5 VDC</u>
PARADISE POINT	S-2323	<u>0.7</u>	<u>0.2</u>	<u>5 VDC</u>
MIDWAY PARK	S-4004	<u>1.0</u>	<u>0.2</u>	<u>2 VDC</u>
FORCE TROOPS	SFC-314	<u>0.6</u>	<u>0.2</u>	<u>7 VDC</u>
MCAS	S-4130	<u>1.3</u>	<u>0.3</u>	<u>4 VDC</u>
MCAS	S-310	<u>1.2</u>	<u>0.3</u>	<u>4 VDC</u>

XVI	1.0	80
XV	1.0	80
XIV	1.0	80
XIII	1.0	80
XII	1.0	80
XI	1.0	80
X	1.0	80
IX	1.0	80
VIII	1.0	80
VII	1.0	80
VI	1.0	80
V	1.0	80
IV	1.0	80
III	1.0	80
II	1.0	80
I	1.0	80

11330  
MAIN

From: Commanding General, Marine Corps Base, Camp Lejeune, North  
Carolina 28542-5001  
To: Commander, Atlantic Division, Naval Facilities Engineering  
Command, Norfolk, Virginia 23511 (Attn: Karl D. Liebrich,  
Code 10284)

Subj: CATHODIC PROTECTION

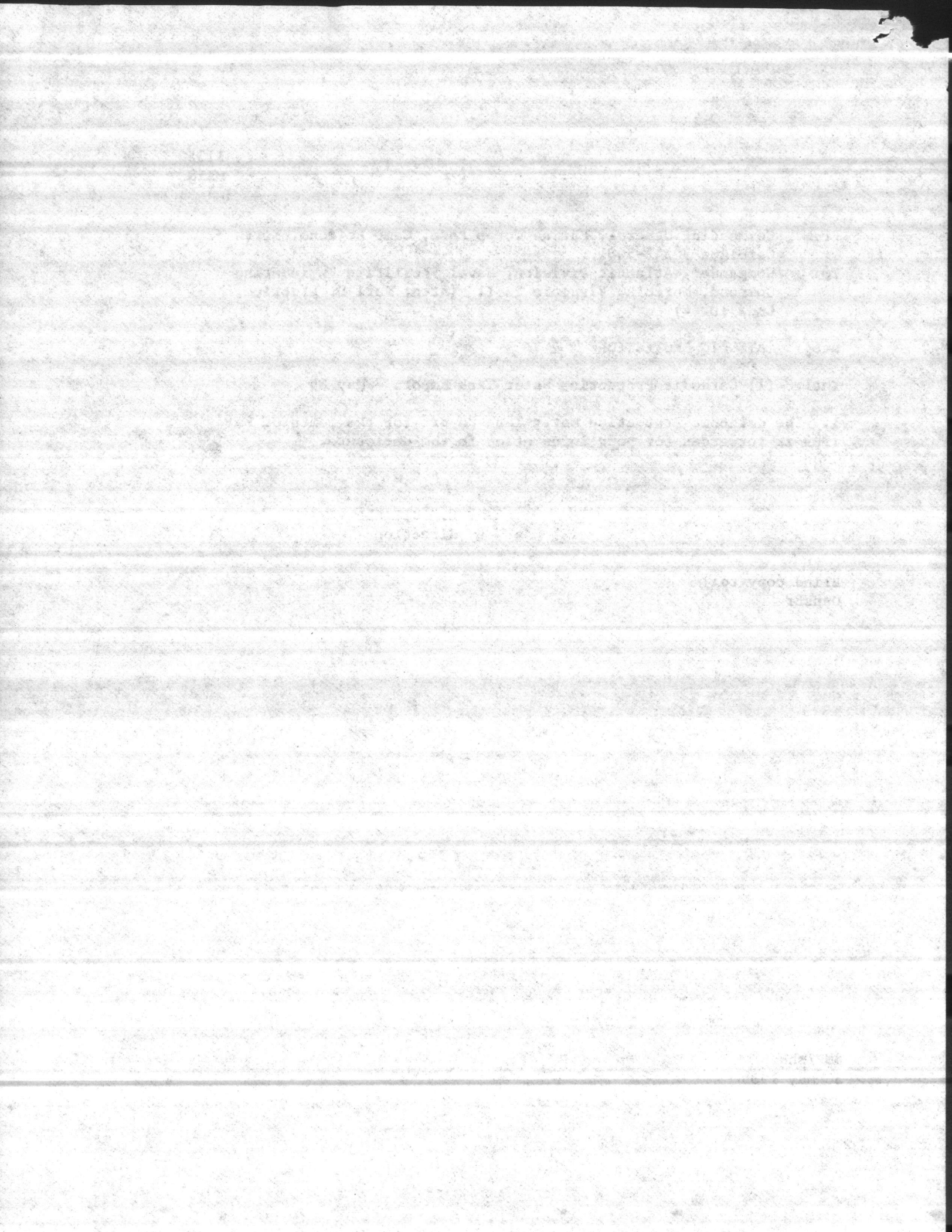
Encl: (1) Cathodic Protection Water Tank Report - May 85

1. The Cathodic Protection Water Tank Report for the month of May  
1985 is forwarded for your information in the enclosure.

H. L. LUTTRELL  
By direction

Blind copy to:  
OpnsBr

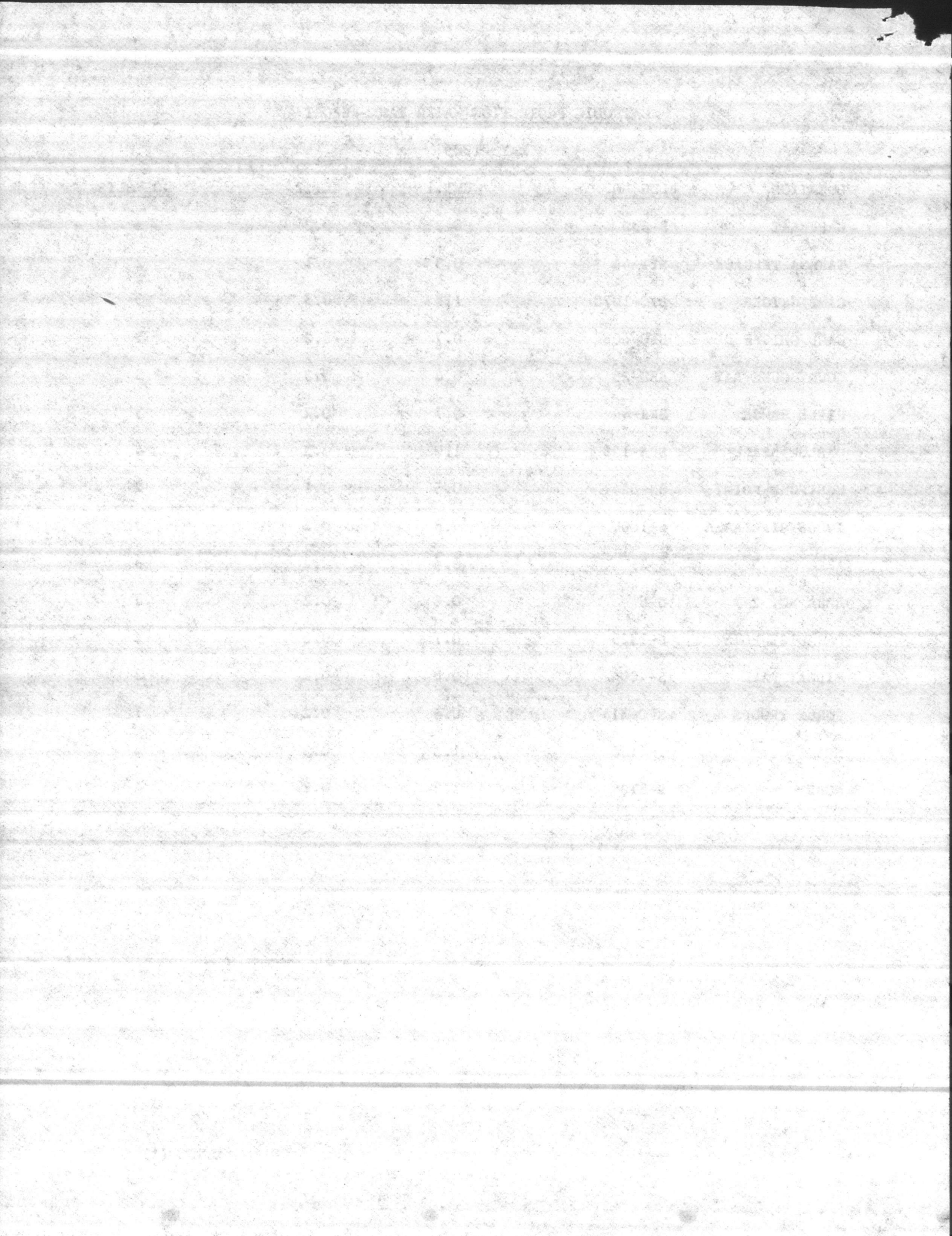
BMF/shk  
30 May 1985



CATHODIC PROTECTION WATER TANK REPORT

MAY 1985

<u>LOCATION</u>	<u>BLDG NO.</u>	<u>CKT.1</u>	<u>CKT.2</u>	<u>DC VOLTS</u>
CAPEHART	S-830	0.8	0.2	5
TARAWA TERRACE	STT-40	0.5	0.1	2
CAMP GEIGER	STC-1070	1.2	0.3	3
CAMP GEIGER	STC-606	0.7	0.2	3
COURTHOUSE BAY	SBB-25	0.8	0.3	3
RIFLE RANGE	SRR-44	0.7	0.2	3
ONSLow BEACH	SEA-108	1.0	0.3	4
MONTFORD POINT	SM-624	0.5	0.1	2
INDUSTRIAL AREA	S-1000	0.8	0.2	3
AREA NO. 5	S-29	0.6	0.2	3
AREA NO. 2	S-5	0.6	0.2	3
PARADISE POINT	S-2323	0.7	0.2	5
MIDWAY PARK	S-4004	0.8	0.2	3
FORCE TROOPS	SFC-314	0.6	0.2	7
MCAS	S-4130	1.3	0.3	4
MCAS	S-310	1.2	0.2	4



CATHODIC PROTECTION WATER TANK REPORT

May 85

<u>LOCATION</u>	<u>BLDG NO.</u>	<u>CKT. 1</u>	<u>CKT. 2</u>	<u>DC VOLTS</u>
CAPEHART	S-830	<u>0.8</u>	<u>0.2</u>	<u>5</u>
TARAWA TERRACE	STT-40	<u>0.5</u>	<u>0.1</u>	<u>2</u>
CAMP GEIGER	STC-1070	<u>1.2</u>	<u>0.3</u>	<u>3</u>
CAMP GEIGER	STC-606	<u>0.7</u>	<u>0.2</u>	<u>3</u>
COURTHOUSE BAY	SBB-25	<u>0.8</u>	<u>0.3</u>	<u>3</u>
RIFLE RANGE	SRR-44	<u>0.7</u>	<u>0.2</u>	<u>3</u>
ONSLow BEACH	SBA-108	<u>1.0</u>	<u>0.3</u>	<u>4</u>
MONTFORD POINT	SM-624	<u>0.5</u>	<u>0.1</u>	<u>2</u>
INDUSTRIAL AREA	S-1000	<u>0.8</u>	<u>0.2</u>	<u>3</u>
AREA NO. 5	S-29	<u>0.6</u>	<u>0.2</u>	<u>3</u>
AREA NO. 2	S-5	<u>0.6</u>	<u>0.2</u>	<u>3</u>
PARADISE POINT	S-2323	<u>0.7</u>	<u>0.2</u>	<u>5</u>
MIDWAY PARK	S-4004	<u>0.8</u>	<u>0.2</u>	<u>3</u>
FORCE TROOPS	SFC-314	<u>0.6</u>	<u>0.2</u>	<u>7</u>
MCAS	S-4130	<u>1.3</u>	<u>0.3</u>	<u>4</u>
MCAS	S-310	<u>1.2</u>	<u>0.2</u>	<u>4</u>



111  
5

D	20	8.0
E	1.0	8.0
F	5.0	8.1
G	5.0	8.0
H	6.0	8.0
I	5.0	8.0
J	5.0	8.1
K	7.0	8.0
L	7.0	8.0

M	5.0	8.0
N	5.0	8.0
O	5.0	8.0
P	5.0	8.0
Q	5.0	8.0
R	5.0	8.0
S	5.0	8.0
T	5.0	8.0
U	5.0	8.0
V	5.0	8.0
W	5.0	8.0
X	5.0	8.0
Y	5.0	8.0
Z	5.0	8.0

11330  
MAIN

From: Commanding General, Marine Corps Base, Camp Lejeune, North  
Carolina 28542-5001

To: Commander, Atlantic Division, Naval Facilities Engineering  
Command, Norfolk, Virginia 23511 (Attn: Karl D. Liebrich,  
Code 10284)

Subj: CATHODIC PROTECTION

Encl: (1) Cathodic Protection Water Tank Report - Apr 85

1. The Cathodic Protection Water Tank Report for the month of April  
1985 is forwarded for your information in the enclosure.

H. L. LUTTRELL  
By direction

Blind copy to:  
OpnsBr

BMF/shk  
1 May 1985

1901  
1902  
1903  
1904  
1905  
1906  
1907  
1908  
1909  
1910  
1911  
1912  
1913  
1914  
1915  
1916  
1917  
1918  
1919  
1920  
1921  
1922  
1923  
1924  
1925  
1926  
1927  
1928  
1929  
1930  
1931  
1932  
1933  
1934  
1935  
1936  
1937  
1938  
1939  
1940  
1941  
1942  
1943  
1944  
1945  
1946  
1947  
1948  
1949  
1950  
1951  
1952  
1953  
1954  
1955  
1956  
1957  
1958  
1959  
1960  
1961  
1962  
1963  
1964  
1965  
1966  
1967  
1968  
1969  
1970  
1971  
1972  
1973  
1974  
1975  
1976  
1977  
1978  
1979  
1980  
1981  
1982  
1983  
1984  
1985  
1986  
1987  
1988  
1989  
1990  
1991  
1992  
1993  
1994  
1995  
1996  
1997  
1998  
1999  
2000  
2001  
2002  
2003  
2004  
2005  
2006  
2007  
2008  
2009  
2010  
2011  
2012  
2013  
2014  
2015  
2016  
2017  
2018  
2019  
2020  
2021  
2022  
2023  
2024  
2025  
2026  
2027  
2028  
2029  
2030  
2031  
2032  
2033  
2034  
2035  
2036  
2037  
2038  
2039  
2040  
2041  
2042  
2043  
2044  
2045  
2046  
2047  
2048  
2049  
2050

1901

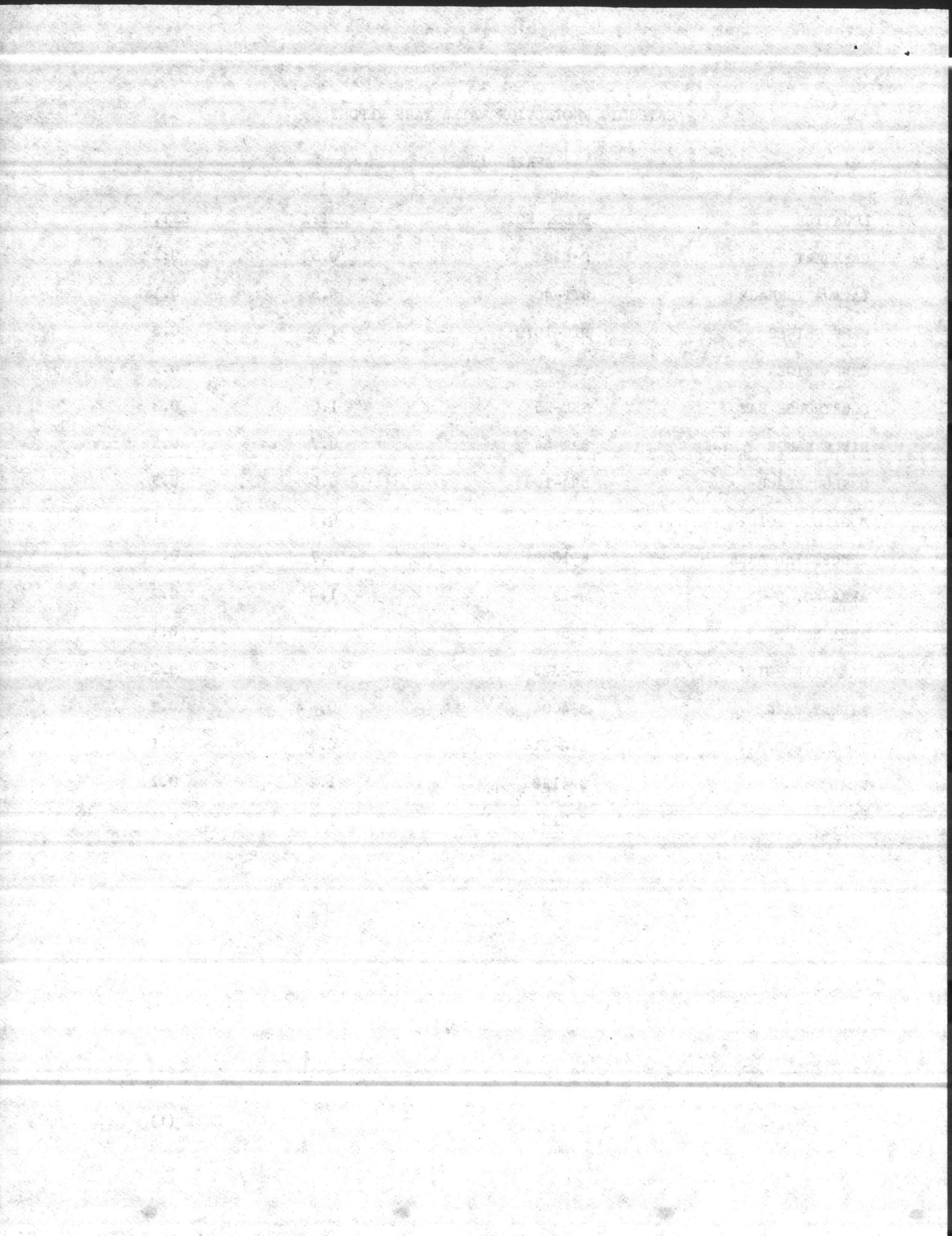
1901

CATHODIC PROTECTION WATER TANK REPORT

APRIL 1985

<u>LOCATION</u>	<u>BLDG. NO.</u>	<u>CKT.1</u>	<u>CKT.2</u>
CAPEHART	S-830	0.5	0.1
TARAWA TERRACE	STT-40	0.5	0.1
CAMP GEIGER	STC-1070	1.0	0.3
CAMP GEIGER	STC-606	0.6	0.2
COURTHOUSE BAY	SBE-25	1.0	0.3
RIFLE RANGE	SRR-44	0.7	0.2
ONSLOW BEACH	SEA-108	0.8	0.3
MONTFORD POINT	SM-624	0.5	0.1
INDUSTRIAL AREA	S-1000	0.7	0.3
AREA NO. 5	S-29	1.0	0.2
AREA NO. 2	S-5	0.6	0.1
PARADISE POINT	S-2323	0.8	0.2
MIDWAY PARK	S-4004	0.8	0.2
FORCE TROOPS	SFC-314	0.5	0.1
MCAS	S-4130	1.2	0.2
MCAS	S-310	1.2	0.2

ENCL (1)



CATHODIC PROTECTION WATER TANK REPORT

APRIL 85

<u>LOCATION</u>	<u>BLDG NO.</u>	<u>CKT.1</u>	<u>CKT.2</u>
CAPEHART	S-830	<u>0.5</u>	<u>0.1</u>
TAPANA TERRACE	STT-40	<u>0.5</u>	<u>0.1</u>
CAMP GEIGER	STC-1070	<u>1.0</u>	<u>0.3</u>
CAMP GEIGER	STC-606	<u>0.6</u>	<u>0.2</u>
COURTHOUSE BAY	SBS-25	<u>1.0</u>	<u>0.3</u>
RIFLE RANGE	SRR-44	<u>0.7</u>	<u>0.2</u>
ONSLEY BEACH	SBA-108	<u>0.8</u>	<u>0.3</u>
MONTFORD POINT	SM-624	<u>0.5</u>	<u>0.1</u>
INDUSTRIAL AREA	S-1000	<u>0.7</u>	<u>0.3</u>
AREA NO. 5	S-29	<u>1.0</u>	<u>0.2</u>
AREA NO. 2	S-5	<u>0.6</u>	<u>0.1</u>
PARADISE POINT	S-2323	<u>0.8</u>	<u>0.2</u>
MIDWAY PARK	S-4004	<u>0.8</u>	<u>0.2</u>
FORGE TROOPS	SFC-314	<u>0.5</u>	<u>0.1</u>
MOAS	S-4130	<u>1.2</u>	<u>0.2</u>
MOAS	S-310	<u>1.2</u>	<u>0.2</u>

APR 25 1998

1.0	2.0
1.0	2.0
3.0	1.0
2.0	2.0
3.0	1.0
2.0	1.0
2.0	8.0
1.0	2.0
2.0	1.0
0.5	1.0
1.0	2.0
2.0	0.8
2.0	2.0
1.0	2.0
2.0	1.5
2.0	1.5

11330  
MAIN

*note  
corrections*

From: Commanding General, Marine Corps Base, Camp Lejeune, North Carolina 28542-5001  
To: Commander, Atlantic Division, Naval Facilities Engineering Command, Norfolk, Virginia 23511 (Attn: Karl D. Liebrich, Code 10284)

Subj: CATHODIC PROTECTION

Encl: (1) Cathodic Protection Water Tank Report - Mar 85

1. The Cathodic Protection Water Tank Report for the month of March 1985 is forwarded for your information in the enclosure.

H. L. LUTTRELL  
By direction

Blind copy to:  
OpnsBr

BMF/shk  
29 Mar 85



... ..  
... ..  
... ..

... ..  
... ..

...

...

CATHODIC PROTECTION WATER TANK REPORT

MARCH 1985

<u>LOCATION</u>	<u>BLDG. NO.</u>	<u>CKT.1</u>	<u>CKT.2</u>
CAPEHART	S-830	0.7	0.2
TARAWA TERRACE	STT-40	0.5	0.1
CAMP GEIGER	STC-1070	1.2	0.3
CAMP GEIGER	STC-606	0.7	0.2
COURTHOUSE BAY	SBB-25	1.2	0.2
RIFLE RANGE	SRR-44	0.6	0.2
ONSLow BEACH	SEA-108	1.0	0.3
MONTFORD POINT	SM-624	0.5	0.1
INDUSTRIAL AREA	S-1000	0.7	0.3
AREA NO. 5	S-29	0.6	0.2
AREA NO. 2	S-5	0.5	0.1
PARADISE POINT	S-2323	0.8	0.2
MIDWAY PARK	S-4004	0.7	0.2
FORCE TROOPS	SFC-314	0.7	0.2
MCAS	S-4130	1.2	0.2
MCAS	S-310	1.2	0.2

UNITED STATES DEPARTMENT OF AGRICULTURE

WATER RESOURCES DIVISION

Station	Date	Time	Flow (cfs)	Remarks
100-100	10-10-50	8:00	100	Normal
100-100	10-11-50	8:00	100	Normal
100-100	10-12-50	8:00	100	Normal
100-100	10-13-50	8:00	100	Normal
100-100	10-14-50	8:00	100	Normal
100-100	10-15-50	8:00	100	Normal
100-100	10-16-50	8:00	100	Normal
100-100	10-17-50	8:00	100	Normal
100-100	10-18-50	8:00	100	Normal
100-100	10-19-50	8:00	100	Normal
100-100	10-20-50	8:00	100	Normal
100-100	10-21-50	8:00	100	Normal
100-100	10-22-50	8:00	100	Normal
100-100	10-23-50	8:00	100	Normal
100-100	10-24-50	8:00	100	Normal
100-100	10-25-50	8:00	100	Normal
100-100	10-26-50	8:00	100	Normal
100-100	10-27-50	8:00	100	Normal
100-100	10-28-50	8:00	100	Normal
100-100	10-29-50	8:00	100	Normal
100-100	10-30-50	8:00	100	Normal
100-100	10-31-50	8:00	100	Normal

CATHODIC PROTECTION WATER TANK REPORT

April 1985

<u>LOCATION</u>	<u>BLDG NO.</u>	<u>CKT.1</u>	<u>CKT.2</u>
CAPEHART	S-830	<u>0.7</u>	<u>0.2</u>
TARANA TERRACE	STT-40	<u>0.5</u>	<u>0.1</u>
CAMP GEIGER	STC-1070	<u>1.2</u>	<u>0.3</u>
CAMP GEIGER	STC-606	<u>0.7</u>	<u>0.2</u>
COURTHOUSE BAY	SBB-25	<u>1.2</u>	<u>0.2</u>
RIFLE RANGE	SRR-44	<u>0.6</u>	<u>0.2</u>
ONSLOW BEACH	SBA-108	<u>1.0</u>	<u>0.3</u>
MONTFORD POINT	SM-624	<u>0.5</u>	<u>0.1</u>
INDUSTRIAL AREA	S-1000	<u>0.7</u>	<u>0.3</u>
AREA NO. 5	S-29	<u>0.6</u>	<u>0.2</u>
AREA NO. 2	S-5	<u>0.5</u>	<u>0.1</u>
PARADISE POINT	S-2323	<u>0.8</u>	<u>0.2</u>
MIDWAY PARK	S-4004	<u>0.7</u>	<u>0.2</u>
FORCE TROOPS	SFC-314	<u>0.7</u>	<u>0.2</u>
MCAS	S-4130	<u>1.2</u>	<u>0.2</u>
MCAS	S-310	<u>1.2</u>	<u>0.2</u>

1952

0.2	0.1
0.1	0.2
0.3	0.1
0.2	0.1
0.2	0.2
0.0	0.1
0.8	0.1
1	0.1
0.2	0.1
0.2	0.1
0.1	0.2
0.2	0.8
0.2	0.1
0.2	0.1
0.2	0.1
0.2	0.1

11330  
MAIN

From: Commanding General, Marine Corps Base, Camp Lejeune  
To: Commander, Atlantic Division, Naval Facilities Engineering  
Command, Norfolk, Virginia 23511 (Attn: Karl D. Liebrich  
Code 10284)

Subj: CATHODIC PROTECTION

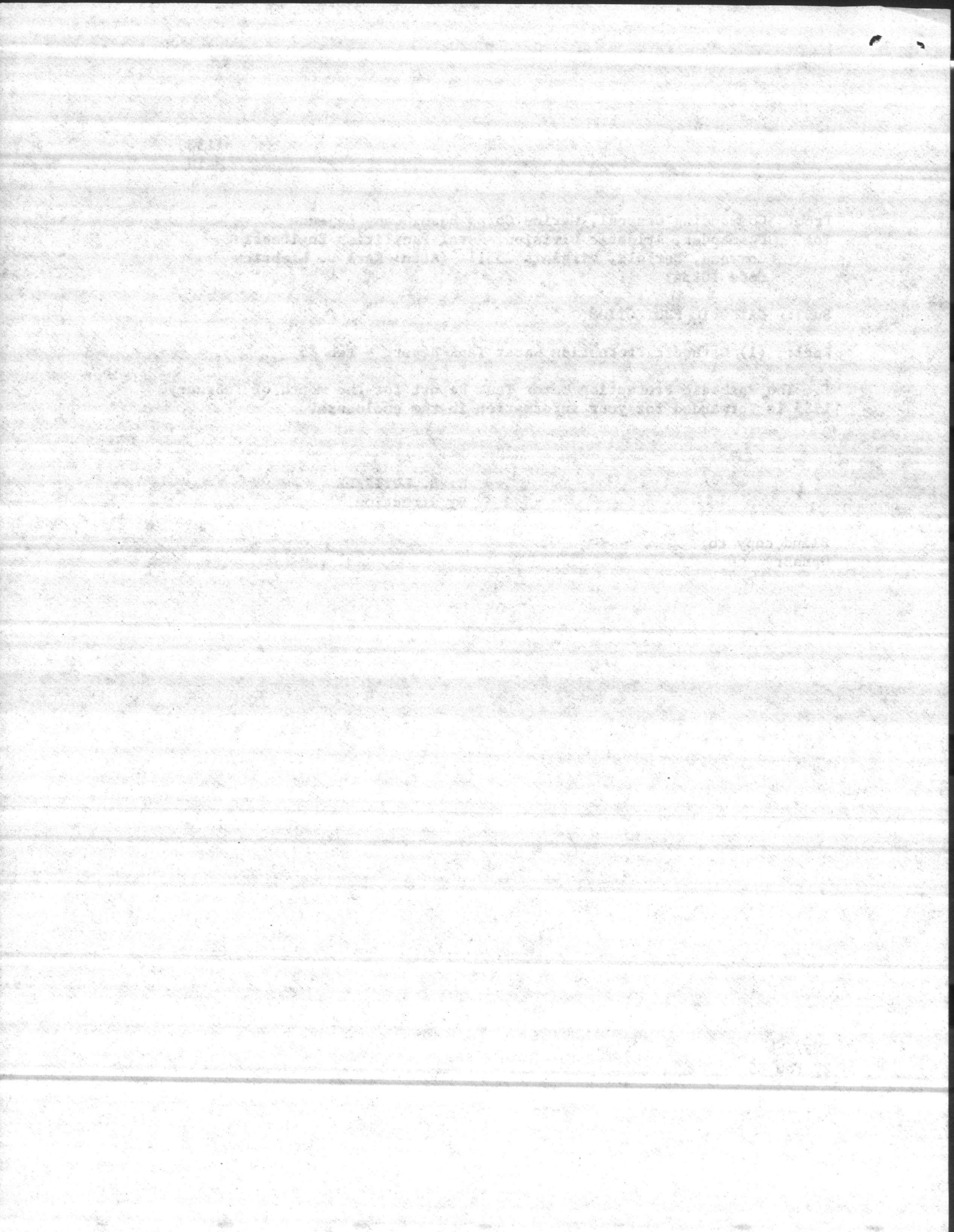
Encl: (1) Cathodic Protection Water Tank Report - Feb 85

1. The Cathodic Protection Water Tank Report for the month of February 1985 is forwarded for your information in the enclosure.

H. L. LUTTRELL  
By direction

Blind copy to:  
OpnsBr

BMF/shk  
28 Feb 85



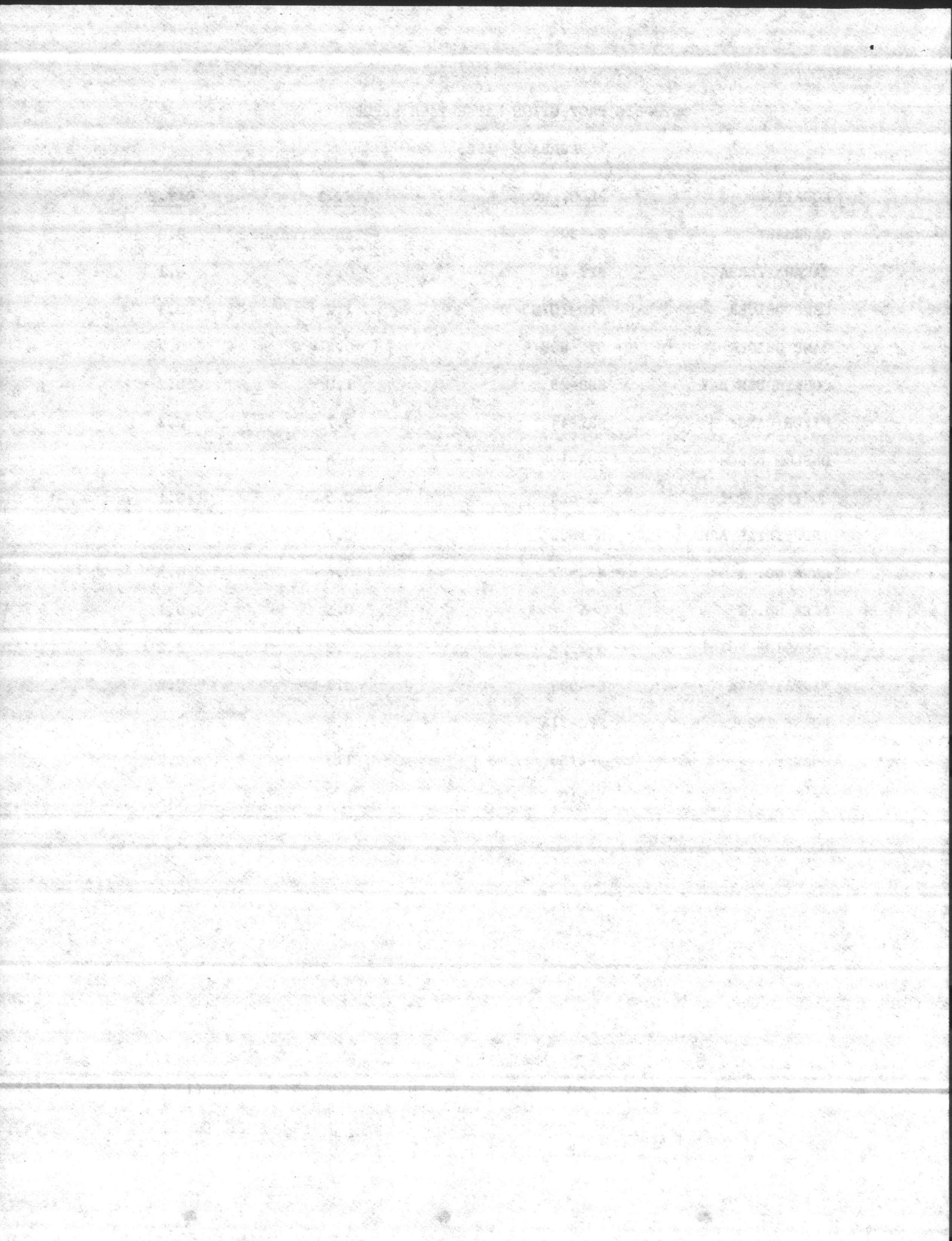
CATHODIC PROTECTION WATER TANK REPORT

FEBRUARY 1985

<u>LOCATION</u>	<u>BLDG. NO.</u>	<u>CKT.1</u>	<u>CKT.2</u>
CAPEHART	S-830	Tank Drained	0.0
TARAWA TERRACE	STT-49	0.5	0.1
CAMP GEIGER	STC-1070	1.2	0.3
CAMP GEIGER	STC-606	0.6	0.2
COURTHOUSE BAY	SBB-25	1.0	0.2
RIFLE RANGE	SRR-44	0.7	0.2
ONSLow BEACH	SGA-108	0.8	0.2
MONTFORD POINT	SM-624	0.5	0.1
INDUSTRIAL AREA	S-1000	0.7	0.2
AREA NO. 5	S-29	0.6	0.2
AREA NO. 2	S-5	0.5	0.1
PARADISE POINT	S-2323	0.8	0.2
MIDWAY PARK	S-4004	0.7	0.2
FORCE TROOPS	SFC-314	0.5	0.2
MCAS	S-4130	1.3	0.2
MCAS	S-310	1.2	0.2

ENCL (1)

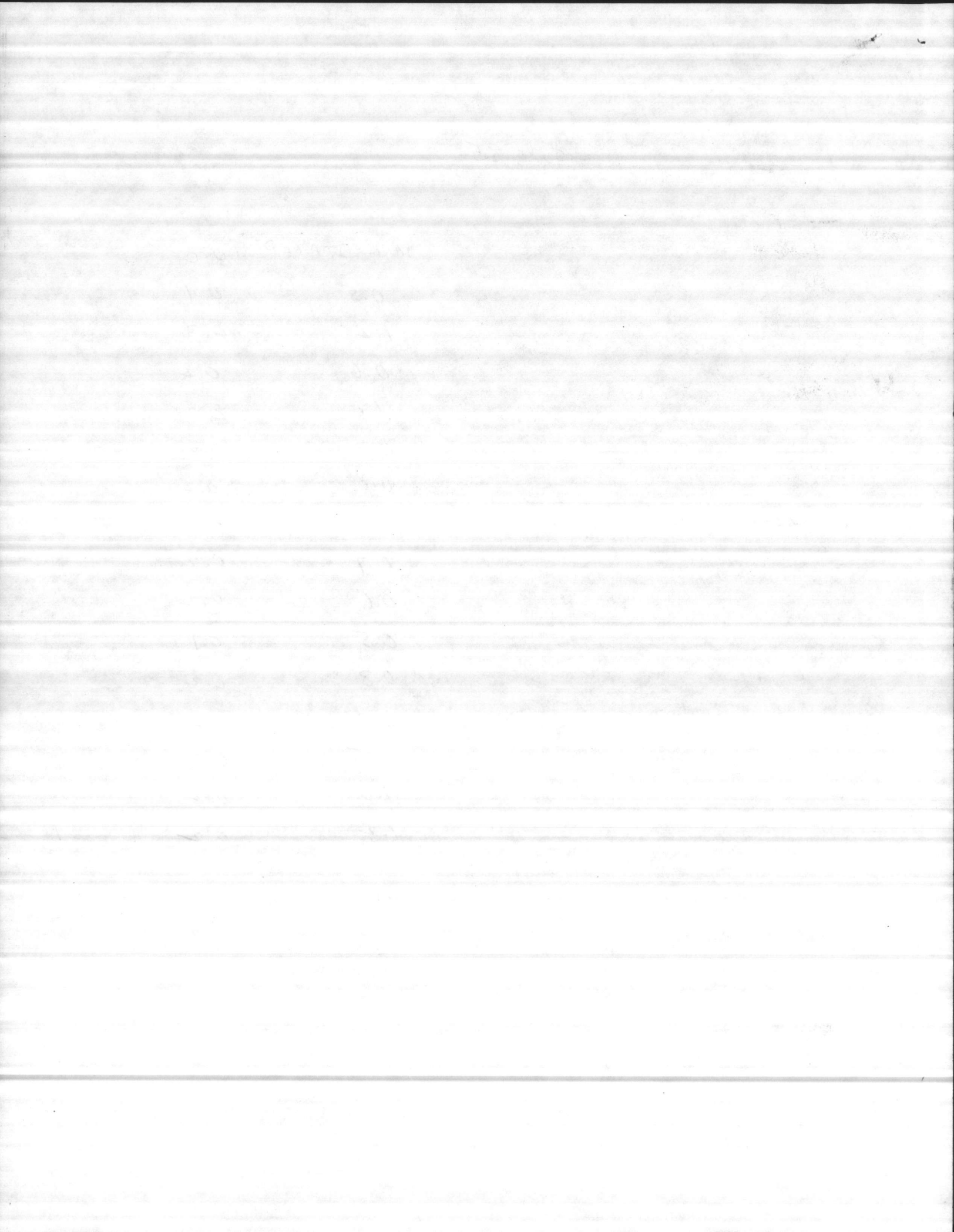




CATHODIC PROTECTION WATER TANK REPORT

Feb 85

<u>LOCATION</u>	<u>BLDG NO.</u>	<u>CKT.1</u>	<u>CKT.2</u>
CAPEHART	S-830	<u>TANK DRAINED</u>	<u>0.0</u>
TAPAWA TERRACE	STT-40	<u>0.5</u>	<u>0.1</u>
CAMP GEIGER	STC-1070	<u>1.2</u>	<u>0.3</u>
CAMP GEIGER	STC-606	<u>0.6</u>	<u>0.2</u>
COURTHOUSE BAY	SBB-25	<u>1.0</u>	<u>0.2</u>
RIFLE RANGE	SRR-44	<u>0.7</u>	<u>0.2</u>
ONslow BEACH	SBA-108	<u>0.8</u>	<u>0.2</u>
MONTFORD POINT	SM-624	<u>0.5</u>	<u>0.1</u>
INDUSTRIAL AREA	S-1000	<u>0.7</u>	<u>0.2</u>
AREA NO. 5	S-29	<u>0.6</u>	<u>0.2</u>
AREA NO. 2	S-5	<u>0.5</u>	<u>0.1</u>
PARADISE POINT	S-2323	<u>0.8</u>	<u>0.2</u>
MIDWAY PARK	S-4004	<u>0.7</u>	<u>0.2</u>
FORCE TROOPS	SFC-314	<u>0.5</u>	<u>0.2</u>
MCAS	S-4130	<u>1.3</u>	<u>0.2</u>
MCAS	S-310	<u>1.2</u>	<u>0.2</u>



11330  
MAIN

From: Commanding General, Marine Corps Base, Camp Lejeune  
To: Commander, Atlantic Division, Naval Facilities Engineering  
Command, Norfolk, Virginia 23511 (Attn: Karl D. Liebrich  
Code 102B4)

Subj: CATHODIC PROTECTION

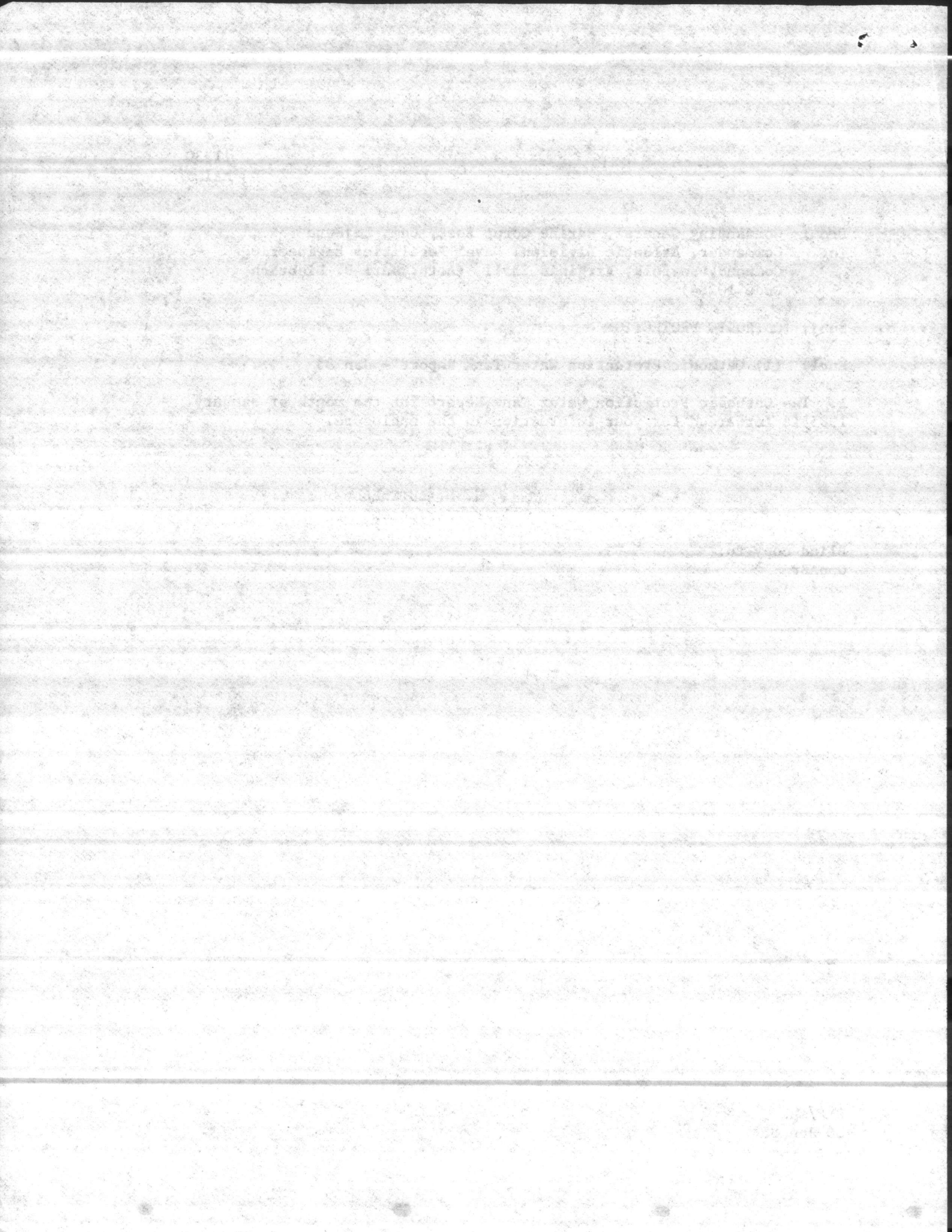
Encl: (1) Cathodic Protection Water Tank Report - Jan 85

1. The Cathodic Protection Water Tank Report for the month of January 1985 is forwarded for your information in the enclosure.

H. L. LUTTRELL  
By direction

Blind copy to:  
OpnsBr

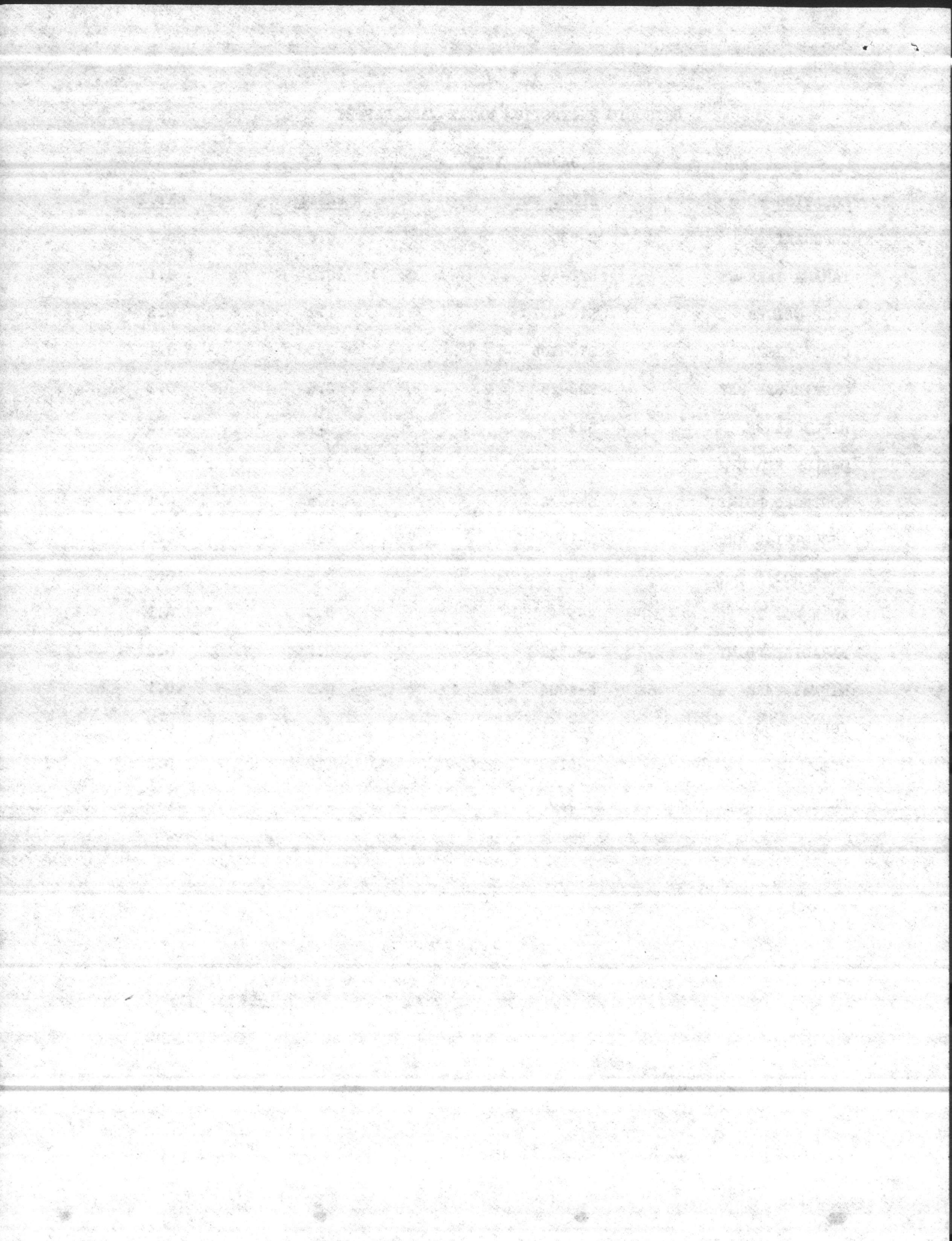
BMF/shk  
30 Jan 85



CATHODIC PROTECTION WATER TANK REPORT

JANUARY 1985

<u>LOCATION</u>	<u>BLDG. NO.</u>	<u>CKT.1</u>	<u>CKT.2</u>
CAPEHART	S-830	0.6	0.1
TARAWA TERRACE	STT-40	0.5	0.1
CAMP GEIGER	STC-1070	1.2	0.3
CAMP GEIGER	STC-606	0.5	0.1
COURTHOUSE BAY	SSB-23	0.6	0.2
RIFLE RANGE	SRR-44	0.7	0.2
ONSWLOW BEACH	SBA-108	0.8	0.2
MONTFORD POINT	SM-624	0.5	0.1
INDUSTRIAL AREA	S-1000	0.6	0.2
AREA NO. 5	S-29	0.6	0.2
AREA NO. 2	S-5	0.5	0.1
PARADISE POINT	S-2323	0.7	0.2
MIDWAY PARK	S-4004	0.5	0.1
FORCE TROOPS	SFC-314	0.5	0.2
MCAS	S-4130	1.2	0.3
MCAS	S-310	1.2	0.3



CATHODIC PROTECTION WATER TANK REPORT

Jan 1985

<u>LOCATION</u>	<u>BLDG NO.</u>	<u>CKT.1</u>	<u>CKT.2</u>
CAPEHART	S-830	<u>0.6</u>	<u>0.1</u>
TAPAWA TERRACE	STT-40	<u>0.5</u>	<u>0.1</u>
CAMP GEIGER	STC-1070	<u>1.2</u>	<u>0.3</u>
CAMP GEIGER	SIC-606	<u>0.5</u>	<u>0.1</u>
COURTHOUSE BAY	SBB-25	<u>0.6</u>	<u>0.2</u>
RIFLE RANGE	SRR-44	<u>0.7</u>	<u>0.2</u>
ONSLOW BEACH	SBA-108	<u>0.8</u>	<u>0.2</u>
MONTFORD POINT	SM-624	<u>0.5</u>	<u>0.1</u>
INDUSTRIAL AREA	S-1000	<u>0.6</u>	<u>0.2</u>
AREA NO. 5	S-29	<u>0.6</u>	<u>0.2</u>
AREA NO. 2	S-5	<u>0.5</u>	<u>0.1</u>
PARADISE POINT	S-2323	<u>0.7</u>	<u>0.2</u>
MIDWAY PARK	S-4004	<u>0.5</u>	<u>0.1</u>
FORCE TROOPS	SFC-314	<u>0.5</u>	<u>0.2</u>
MCAS	S-4130	<u>1.2</u>	<u>0.3</u>
MCAS	S-310	<u>1.2</u>	<u>0.3</u>



10 10

20 20

30 30

40 40

50 50

60 60

70 70

80 80

90 90

100 100

110 110

120 120

130 130

140 140

150 150

160 160

170 170

180 180

190 190

200 200



DEPARTMENT OF THE NAVY

ATLANTIC DIVISION  
NAVAL FACILITIES ENGINEERING COMMAND  
NORFOLK, VIRGINIA 23511-6287

TELEPHONE NO.  
(804)444-9521  
(AV) 564-9521

IN REPLY REFER TO:  
102B4:KDL:ssl  
21 JAN 1985

From: Commander, Atlantic Division, Naval Facilities Engineering Command  
To: Commanding General, Marine Corp Base, Camp LeJeune

Subj: CATHODIC PROTECTION WATER TANK REPORTS

Ref: (a) NAVFACINST 11014.51 of 19 October 1983

1. Each month your activity submits a "Cathodic Protection Water Tank Report" to LANTDIV as required by reference (a).
2. A change in responsibility for Cathodic Protection occurred from LANTDIV Code 11 to LANTDIV Code 10 in October 1981. Your reports, sent via cover letter, have been going to the "Attention of Mr. E. A. Barco, Code 114". Due to this change in command responsibility it is requested that all further reports to LANTDIV be sent to the attention of "Mr. Karl D. Liebrich, Code 102B4".
3. Your command is to be commended for its excellent reporting record of rectifier data on a monthly basis as it keeps LANTDIV informed of your Cathodic Protection Systems and allows us to schedule surveys of these systems. The last survey was completed in November 1984 and the report will be published in the near future.
4. Additional information or guidance on Cathodic Protection/Corrosion Control should be directed to LANTDIV's corrosion engineer, Mr. Karl D. Liebrich, Code 102B4, at AUTOVON 564-9521.

*Gordon J. Bosch*

GORDON J. BOSCH  
By direction

*Your welcome  
slide*

1954-1955  
1954-1955

Department of Agriculture, Bureau of Plant Industry  
Washington, D. C.

REPORT OF THE DIRECTOR, BUREAU OF PLANT INDUSTRY

FOR THE YEAR 1954-1955

The Bureau of Plant Industry, Department of Agriculture, has the honor to acknowledge the assistance of the following individuals in the preparation of this report:

A special acknowledgment is made to the following individuals who have rendered valuable assistance in the preparation of this report: Mr. J. H. ... Mr. ... Mr. ...

The Bureau of Plant Industry is indebted to the following individuals for their generous contributions of funds and materials for the support of the Bureau's research and educational activities during the year 1954-1955:

The Bureau of Plant Industry is indebted to the following individuals for their generous contributions of funds and materials for the support of the Bureau's research and educational activities during the year 1954-1955:

*[Handwritten signature]*

Director, Bureau of Plant Industry

U.S. GOVERNMENT PRINTING OFFICE: 1954

PLANT INDUSTRY BUREAU REPORT

11330  
MAIN

From: Commanding General, Marine Corps Base, Camp Lejeune  
To: Commander, Atlantic Division, Naval Facilities Engineering  
Command, Norfolk, Virginia 23511 (Attn: E. A. Barco, Code 114)

Subj: CATHODIC PROTECTION

Encl: (1) Cathodic Protection Water Tank Report - Dec 84

1. The Cathodic Protection Water Tank Report for the month of December 1984 is forwarded for your information in the enclosure.

H. L. LUTTRELL  
By direction

Blind copy to:  
OpnsBr

BMF/shk  
2 Jan 80

From the records of the Department of the Interior, Bureau of Land Management, Washington, D. C., dated 1911, showing the land owned by the United States in the State of California.

LAND OWNED BY THE UNITED STATES

The following is a list of the land owned by the United States in the State of California, as of January 1, 1911. The land is classified as follows: (1) Public Domain, (2) Reserved Lands, (3) Lands of the United States, and (4) Lands of the States.

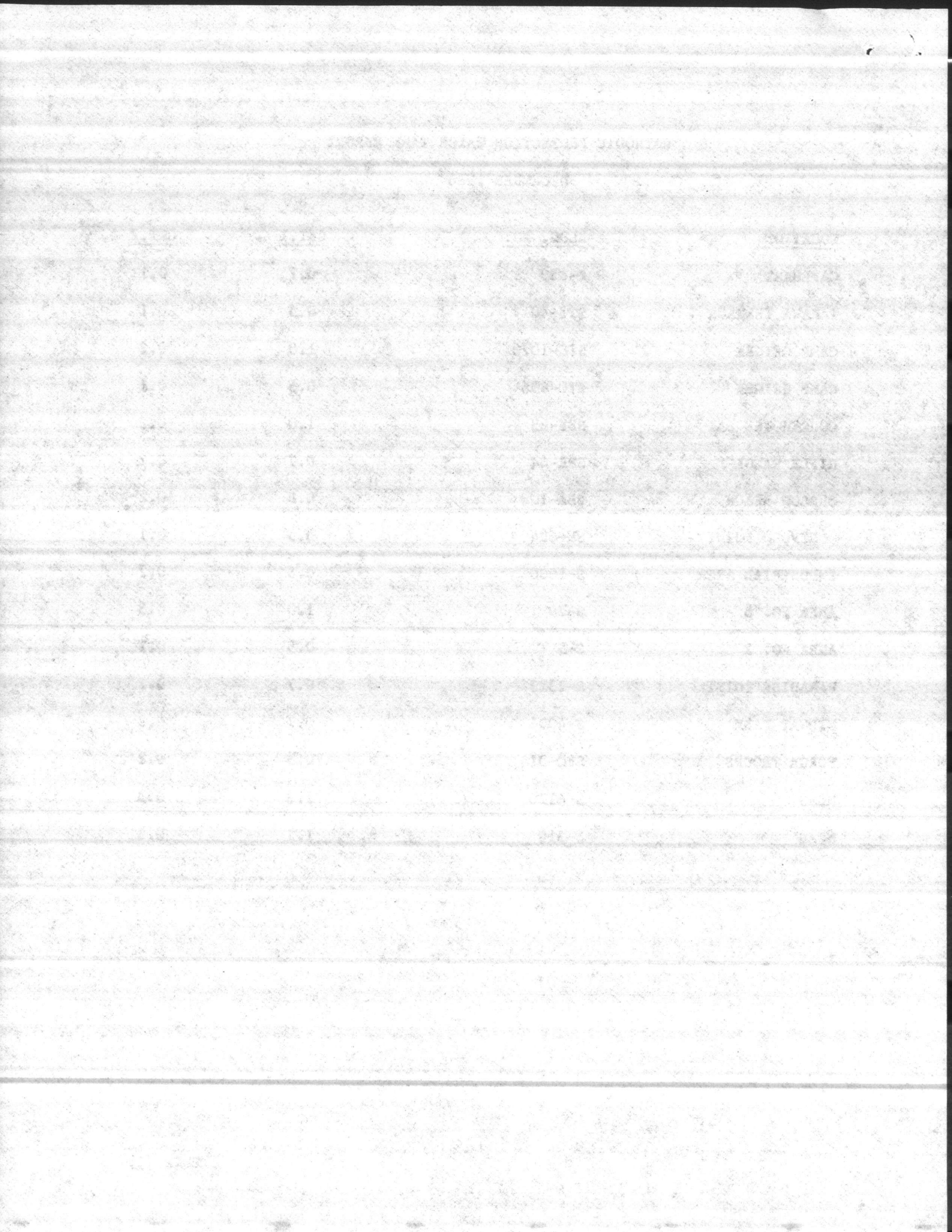
Page 1

and copy to  
Bureau

CATHODIC PROTECTION WATER TANK REPORT

DECEMBER 1984

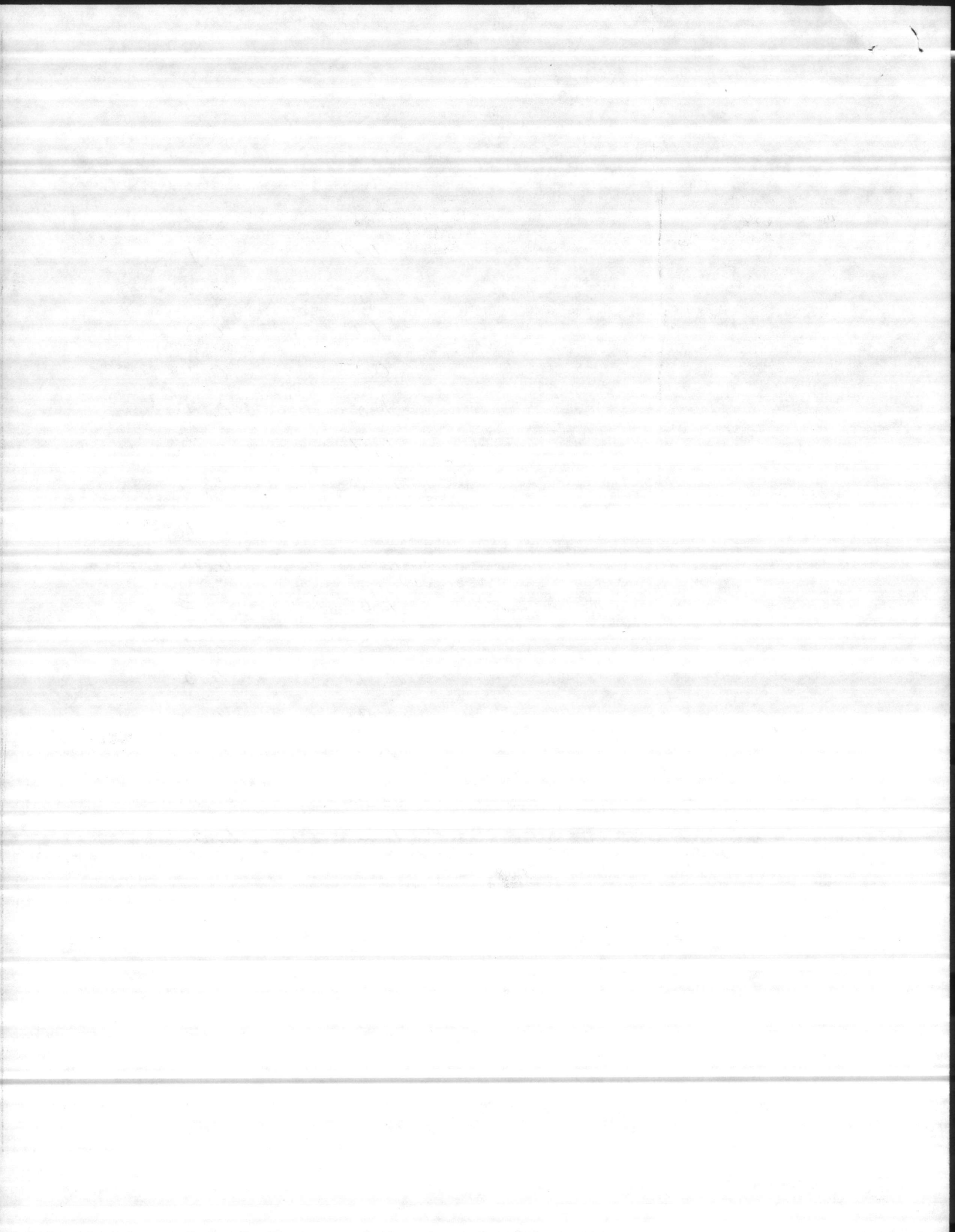
<u>LOCATION</u>	<u>BLDG. NO.</u>	<u>CKT.1</u>	<u>CKT.2</u>
CAPEHART	S-830	0.7	0.1
TARAWA TERRACE	STT-40	0.5	0.1
CAMP GEIGER	STC-1070	1.0	0.2
CAMP GEIGER	STC-606	0.5	0.1
COURTHOUSE BAY	SBB-25	1.0	0.2
RIFLE RANGE	SRR-44	0.7	0.2
ONSLow BEACH	SBA-108	0.6	0.2
MONTFORD POINT	SM-624	0.5	0.1
INDUSTRIAL AREA	S-1000	0.6	0.2
AREA NO. 5	S-29	1.0	0.3
AREA NO. 2	S-5	0.5	0.1
PARADISE POINT	S-2323	0.7	0.2
MIDWAY PARK	S-4004	0.7	0.2
FORCE TROOPS	SFC-314	0.5	0.2
NCAS	S-4130	1.2	0.3
NCAS	S-310	1.2	0.3



CATHODIC PROTECTION WATER TANK REPORT

<u>LOCATION</u>	<u>BLDG NO.</u>	<u>CKT.1</u>	<u>CKT.2</u>
CAPEHART	S-830	<u>0.7</u>	<u>0.1</u>
TAPAWA TERRACE	STT-40	<u>0.5</u>	<u>0.1</u>
CAMP GEIGER	STC-1070	<u>1.0</u>	<u>0.2</u>
CAMP GEIGER	STC-606	<u>0.5</u>	<u>0.1</u>
COURTHOUSE BAY	SBB-25	<u>1.0</u>	<u>0.2</u>
RIFLE RANGE	SRR-44	<u>0.7</u>	<u>0.2</u>
ONSLOW BEACH	SBA-108	<u>0.6</u>	<u>0.2</u>
MONTFORD POINT	SM-624	<u>0.5</u>	<u>0.1</u>
INDUSTRIAL AREA	S-1000	<u>0.6</u>	<u>0.2</u>
AREA NO. 5	S-29	<u>1.0</u>	<u>0.3</u>
AREA NO. 2	S-5	<u>0.5</u>	<u>0.1</u>
PARADISE POINT	S-2323	<u>0.7</u>	<u>0.2</u>
MIDWAY PARK	S-4004	<u>0.7</u>	<u>0.2</u>
FORCE TROOPS	SFC-314	<u>0.5</u>	<u>0.2</u>
MCAS	S-4130	<u>1.2</u>	<u>0.3</u>
MCAS	S-310	<u>1.2</u>	<u>0.3</u>





11330  
MAIN

From: Commanding General, Marine Corps Base, Camp Lejeune  
To: Commander, Atlantic Division, Naval Facilities Engineering  
Command, Norfolk, Virginia 23511 (Attn: E. A. Barco, Code 114)

Subj: CATHODIC PROTECTION

Encl: (1) Cathodic Protection Water Tank Report - Nov 84

1. The Cathodic Protection Water Tank Report for the month of November 1984 is forwarded for your information in the enclosure.

H. L. LUTTRELL  
By direction

Blind copy to:  
OpnsBr

BMF/shk  
26 Nov 84



Faint, illegible text at the top of the page, possibly a header or title.

Second block of faint, illegible text in the upper section of the page.

Third block of faint, illegible text in the upper section of the page.

Small, faint text block located on the right side of the page.

Faint, illegible text at the bottom of the page, possibly a footer or signature.

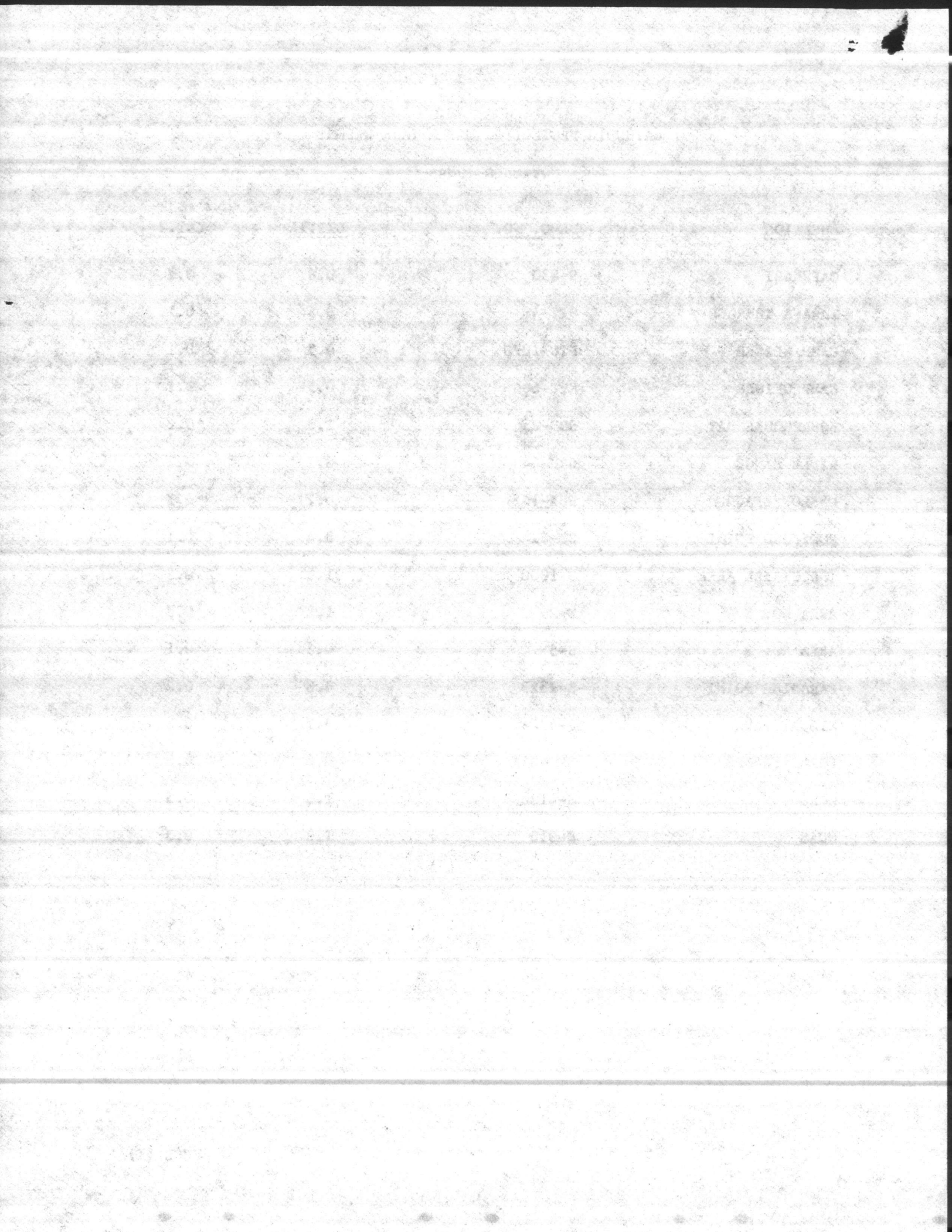
Small, faint text block located at the bottom right of the page.

CATHODIC PROTECTION WATER TANK REPORT

NOVEMBER 1984

<u>LOCATION</u>	<u>BLDG. NO.</u>	<u>CKT.1</u>	<u>CKT.2</u>
CAPEHART	S-830	0.8	0.2
TARAWA TERRACE	STT-40	0.5	0.1
CAMP GEIGER	STC-1070	0.5	0.1
CAMP GEIGER	STC-606	0.5	0.1
COURTHOUSE BAY	SBB-25	1.0	0.2
RIFLE RANGE	SRR-44	0.7	0.2
ONSIOW BEACH	SBA-108	0.7	0.3
MONTFORD POINT	SM-624	0.4	0.1
INDUSTRIAL AREA	S-1000	1.0	0.3
AREA NO. 5	S-29	1.2	0.3
AREA NO. 2	S-5	0.5	0.1
PARADISE POINT	S-2323	0.8	0.2
MIDWAY PARK	S-4004	0.7	0.2
FORCE TROOPS	SFC-314	0.6	0.3
MCAS	S-4130	1.3	0.3
MCAS	S-310	1.2	0.3

ENCL (1)



~~Dec 11-15~~

CATHODIC PROTECTION WATER TANK REPORT

Nov 84

<u>LOCATION</u>	<u>BLDG NO.</u>	<u>CKT.1</u>	<u>CKT.2</u>
CAPEHART	S-830	<u>0.8</u>	<u>0.2</u>
TAPAWA TERRACE	STT-40	<u>0.5</u>	<u>0.1</u>
CAMP GEIGER	STC-1070	<u>0.5</u>	<u>0.1</u>
CAMP GEIGER	STC-606	<u>0.5</u>	<u>0.1</u>
COURTHOUSE BAY	SBB-25	<u>1.0</u>	<u>0.2</u>
RIFLE RANGE	SRR-44	<u>0.7</u>	<u>0.2</u>
ONSLOW BEACH	SBA-108	<u>0.7</u>	<u>0.3</u>
MONTFORD POINT	SM-624	<u>0.4</u>	<u>0.1</u>
INDUSTRIAL AREA	S-1000	<u>1.0</u>	<u>0.3</u>
AREA NO. 5	S-29	<u>1.2</u>	<u>0.3</u>
AREA NO. 2	S-5	<u>0.5</u>	<u>0.1</u>
PARADISE POINT	S-2323	<u>0.8</u>	<u>0.2</u>
MIDWAY PARK	S-4004	<u>0.7</u>	<u>0.2</u>
FORCE TROOPS	SFC-314	<u>0.6</u>	<u>0.3</u>
MCAS	S-4130	<u>1.3</u>	<u>0.3</u>
MCAS	S-310	<u>1.2</u>	<u>0.3</u>

10  
11  
12  
13  
14  
15  
16  
17  
18  
19  
20  
21  
22  
23  
24  
25  
26  
27  
28  
29  
30  
31  
32  
33  
34  
35  
36  
37  
38  
39  
40  
41  
42  
43  
44  
45  
46  
47  
48  
49  
50  
51  
52  
53  
54  
55  
56  
57  
58  
59  
60  
61  
62  
63  
64  
65  
66  
67  
68  
69  
70  
71  
72  
73  
74  
75  
76  
77  
78  
79  
80  
81  
82  
83  
84  
85  
86  
87  
88  
89  
90  
91  
92  
93  
94  
95  
96  
97  
98  
99  
100

101  
102  
103  
104  
105  
106  
107  
108  
109  
110  
111  
112  
113  
114  
115  
116  
117  
118  
119  
120  
121  
122  
123  
124  
125  
126  
127  
128  
129  
130  
131  
132  
133  
134  
135  
136  
137  
138  
139  
140  
141  
142  
143  
144  
145  
146  
147  
148  
149  
150  
151  
152  
153  
154  
155  
156  
157  
158  
159  
160  
161  
162  
163  
164  
165  
166  
167  
168  
169  
170  
171  
172  
173  
174  
175  
176  
177  
178  
179  
180  
181  
182  
183  
184  
185  
186  
187  
188  
189  
190  
191  
192  
193  
194  
195  
196  
197  
198  
199  
200

201  
202  
203  
204  
205  
206  
207  
208  
209  
210  
211  
212  
213  
214  
215  
216  
217  
218  
219  
220  
221  
222  
223  
224  
225  
226  
227  
228  
229  
230  
231  
232  
233  
234  
235  
236  
237  
238  
239  
240  
241  
242  
243  
244  
245  
246  
247  
248  
249  
250  
251  
252  
253  
254  
255  
256  
257  
258  
259  
260  
261  
262  
263  
264  
265  
266  
267  
268  
269  
270  
271  
272  
273  
274  
275  
276  
277  
278  
279  
280  
281  
282  
283  
284  
285  
286  
287  
288  
289  
290  
291  
292  
293  
294  
295  
296  
297  
298  
299  
300

301  
302  
303  
304  
305  
306  
307  
308  
309  
310  
311  
312  
313  
314  
315  
316  
317  
318  
319  
320  
321  
322  
323  
324  
325  
326  
327  
328  
329  
330  
331  
332  
333  
334  
335  
336  
337  
338  
339  
340  
341  
342  
343  
344  
345  
346  
347  
348  
349  
350  
351  
352  
353  
354  
355  
356  
357  
358  
359  
360  
361  
362  
363  
364  
365  
366  
367  
368  
369  
370  
371  
372  
373  
374  
375  
376  
377  
378  
379  
380  
381  
382  
383  
384  
385  
386  
387  
388  
389  
390  
391  
392  
393  
394  
395  
396  
397  
398  
399  
400

11330  
MAIN

From: Commanding General, Marine Corps Base, Camp Lejeune  
To: Commander, Atlantic Division, Naval Facilities Engineering  
Command, Norfolk, Virginia 23511 (Attn: E. A. Barco, Code 114)

Subj: CATHODIC PROTECTION

Encl: (1) Cathodic Protection Water Tank Report - Oct 84

1. The Cathodic Protection Water Tank Report for the month of October 1984 is forwarded for you information in the enclosure.

H. L. LUTTRELL  
By direction

Blind copy to:  
OpnsBr

BMF/shk  
25 Oct 84





THE UNIVERSITY OF CHICAGO  
DEPARTMENT OF CHEMISTRY

REPORT OF THE  
COMMISSIONERS OF THE  
LAND OFFICE

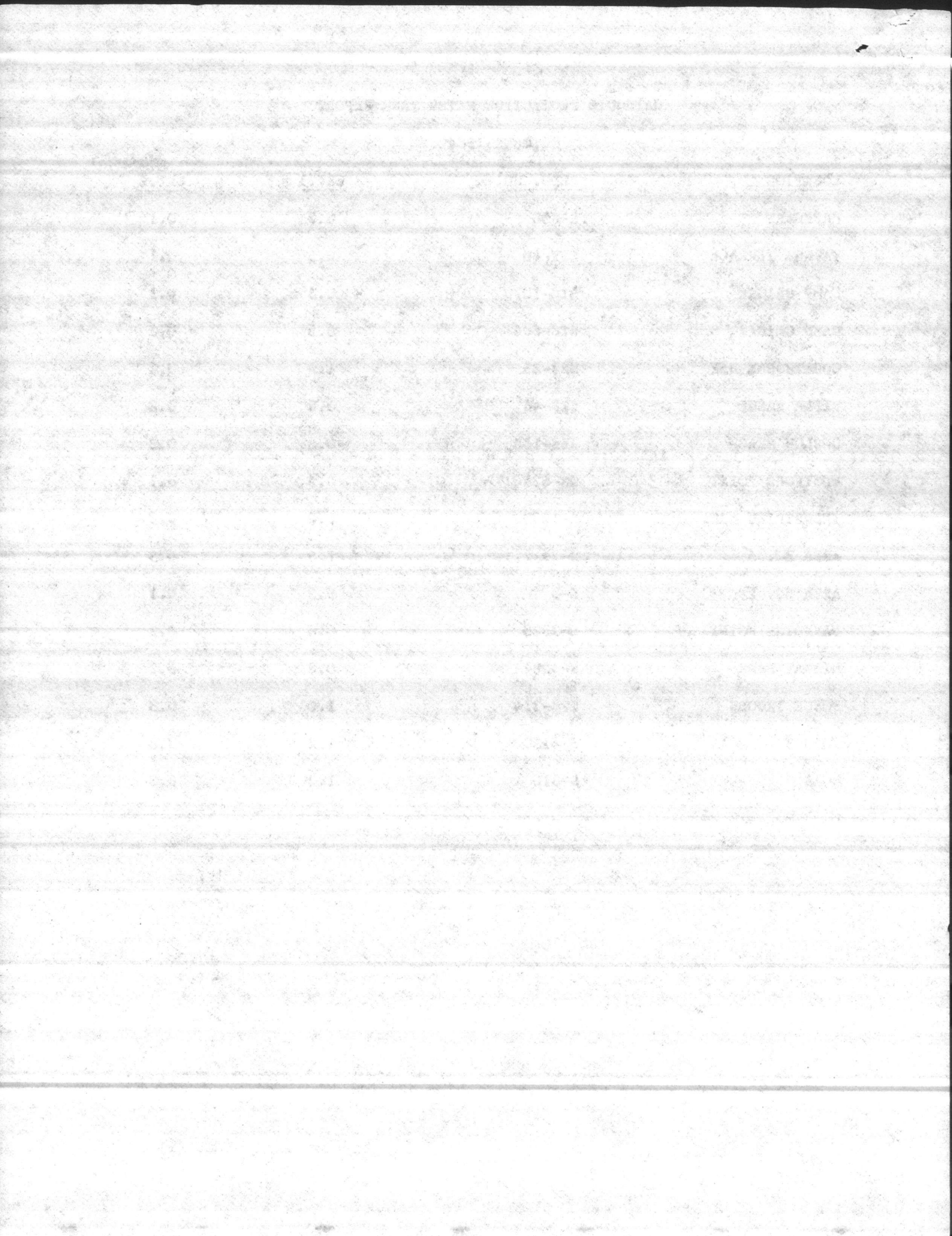
1890

## CATHODIC PROTECTION WATER TANK REPORT

OCTOBER 1984

<u>LOCATION</u>	<u>BLDG. NO.</u>	<u>CKT.1</u>	<u>CKT.2</u>
CAPEHART	S-830	0.7	0.1
TARAWA TERRACE	STT-40	0.5	0.1
CAMP GEIGER	STC-1070	0.5	0.1
CAMP GEIGER	STC-606	0.5	0.2
COURTHOUSE BAY	SBB-25	1.0	0.2
RIFLE RANGE	SRR-44	0.8	0.2
ONSLow BEACH	SBA-108	0.8	0.2
MONTFORD POINT	SM-624	0.5	0.1
INDUSTRIAL AREA	S-1000	1.0	0.3
AREA NO. 5	S-29	1.5	0.5
AREA NO. 2	S-5	0.5	0.1
PARADISE POINT	S-2323	0.8	0.2
MIDWAY PARK	S-4004	0.8	0.2
FORCE TROOPS	SFC-314	1.0	0.3
MCAS	S-4130	1.2	0.3
MCAS	S-310	1.3	0.3

ENCL (1)



CATHODIC PROTECTION WATER TANK REPORT

OCT 1984

<u>LOCATION</u>	<u>BLDG NO.</u>	<u>CKT.1</u>	<u>CKT.2</u>
CAPEHART	S-830	<u>1.2</u> <u>0.7</u>	<u>0.3</u> <u>0.1</u>
TAPAWA TERRACE	STT-40	<u>0.5</u>	<u>0.1</u>
CAMP GEIGER	STC-1070	<u>.5</u>	<u>0.1</u>
CAMP GEIGER	STC-606	<u>.5</u>	<u>0.2</u>
COURTHOUSE BAY	SBB-25	<u>1.0</u>	<u>0.2</u>
RIFLE RANGE	SRR-44	<u>0.8</u>	<u>0.2</u>
ONSLow BEACH	SBA-108	<u>0.8</u>	<u>0.2</u>
MONTFORD POINT	SM-624	<u>0.5</u>	<u>0.1</u>
INDUSTRIAL AREA	S-1000	<u>1.0</u>	<u>0.3</u>
AREA NO. 5	S-29	<u>1.5</u>	<u>0.5</u>
AREA NO. 2	S-5	<u>0.5</u>	<u>0.1</u>
PARADISE POINT	S-2323	<u>0.8</u>	<u>0.2</u>
MIDWAY PARK	S-4004	<u>0.8</u>	<u>0.2</u>
FORCE TROOPS	SFC-314	<u>1.0</u>	<u>0.3</u>
MCAS	S-4130	<u>1.2</u>	<u>0.3</u>
MCAS	S-310	<u>1.3</u>	<u>0.3</u>

