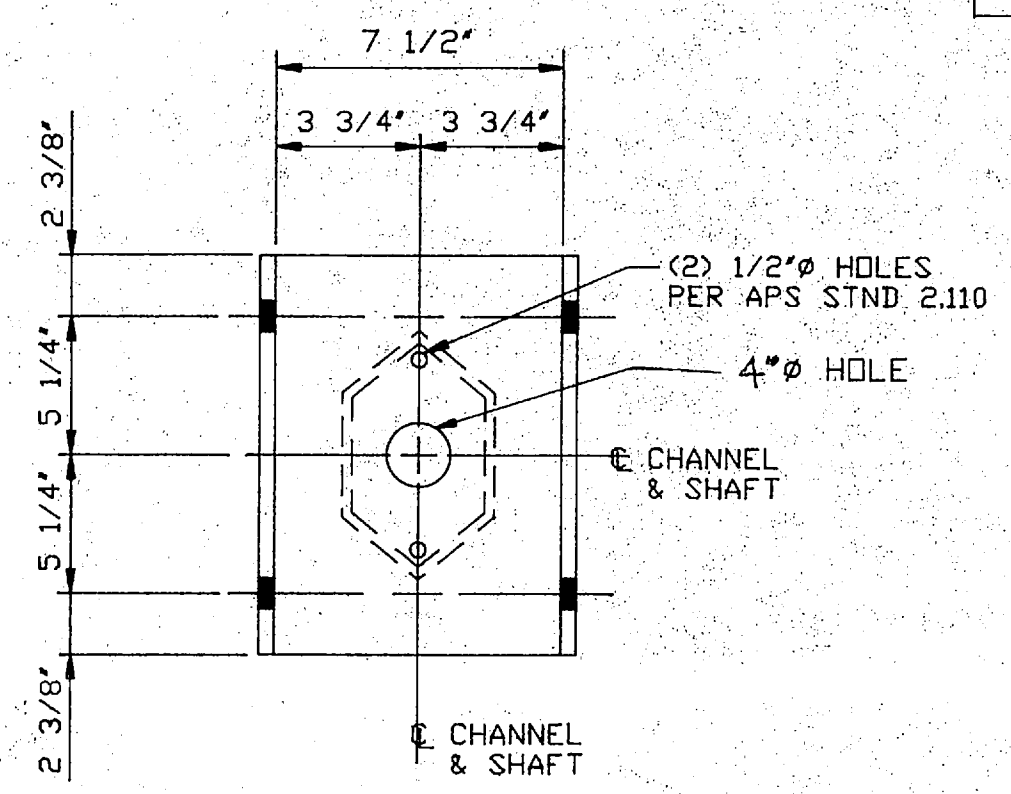
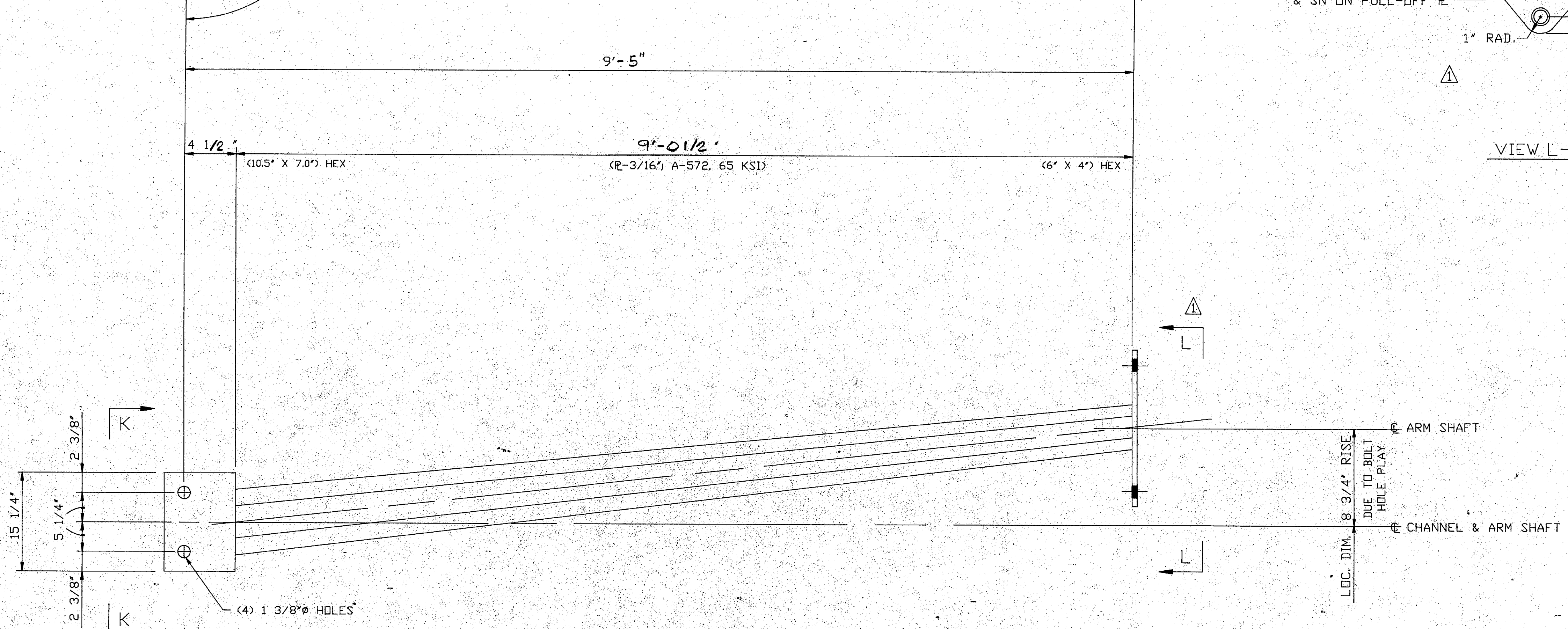
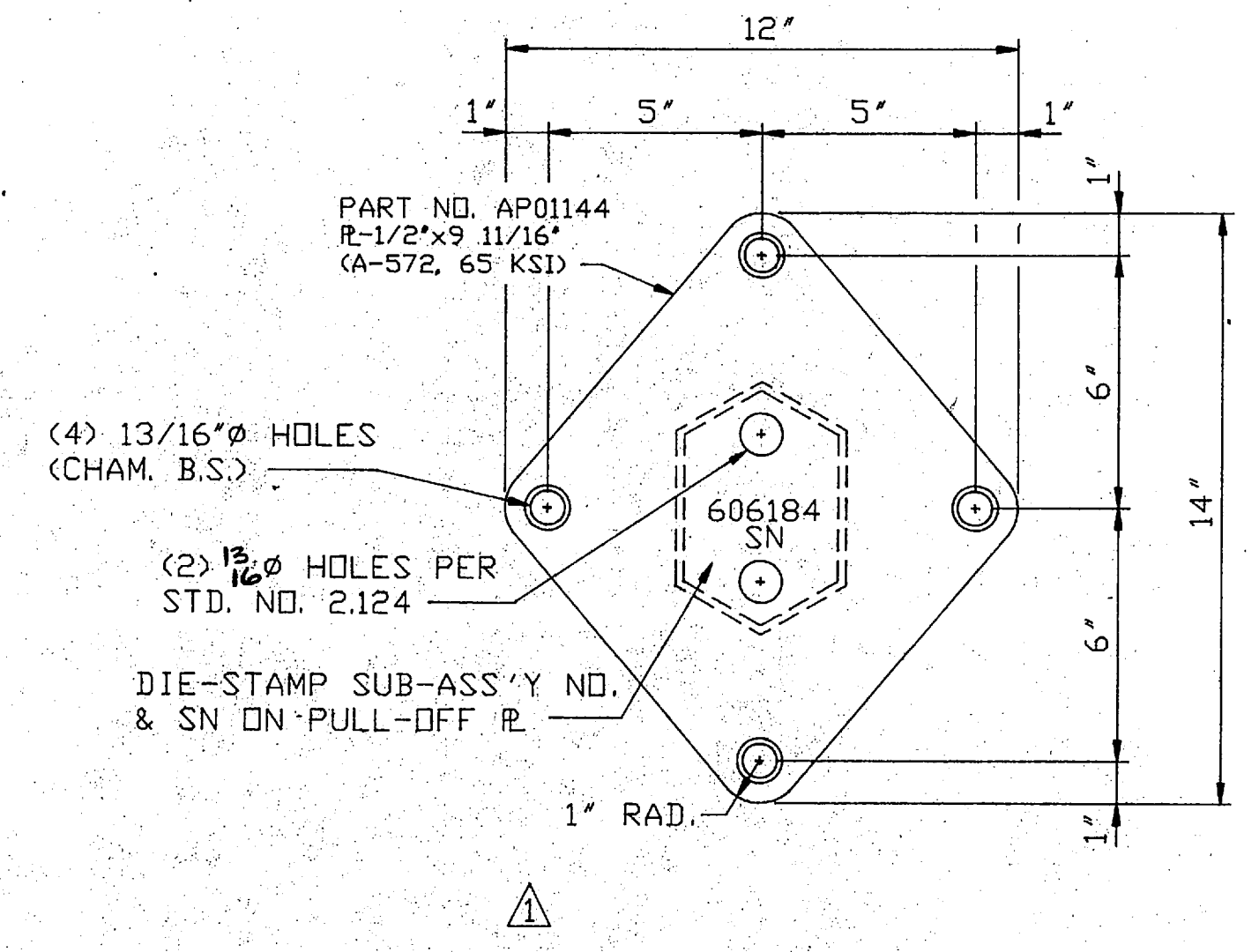
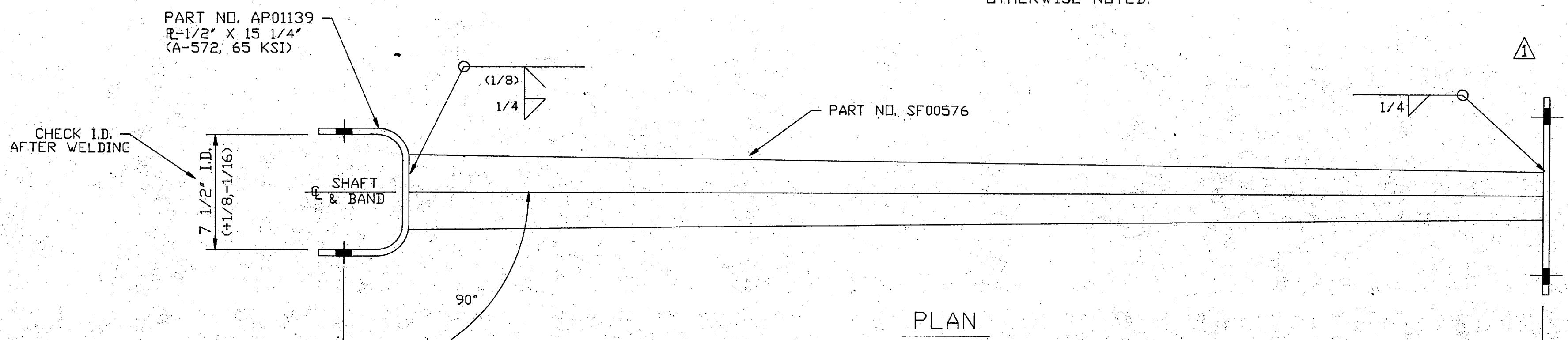


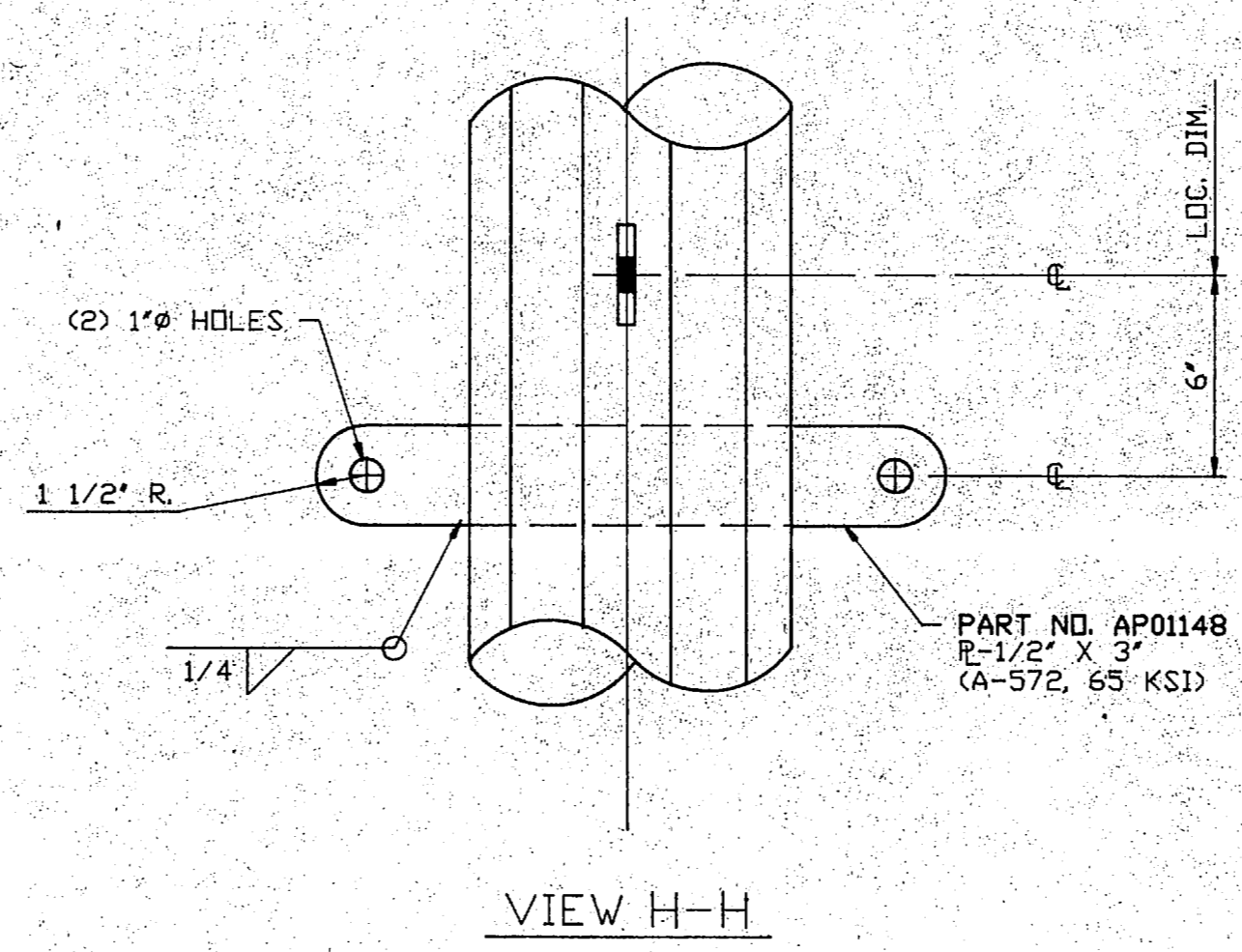
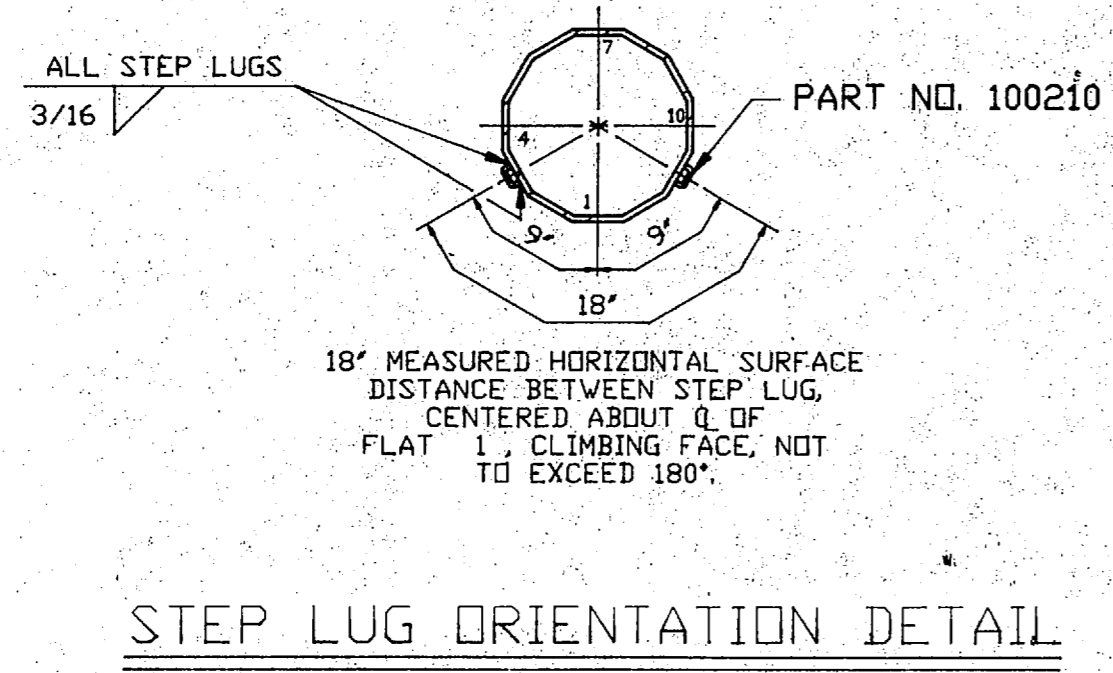
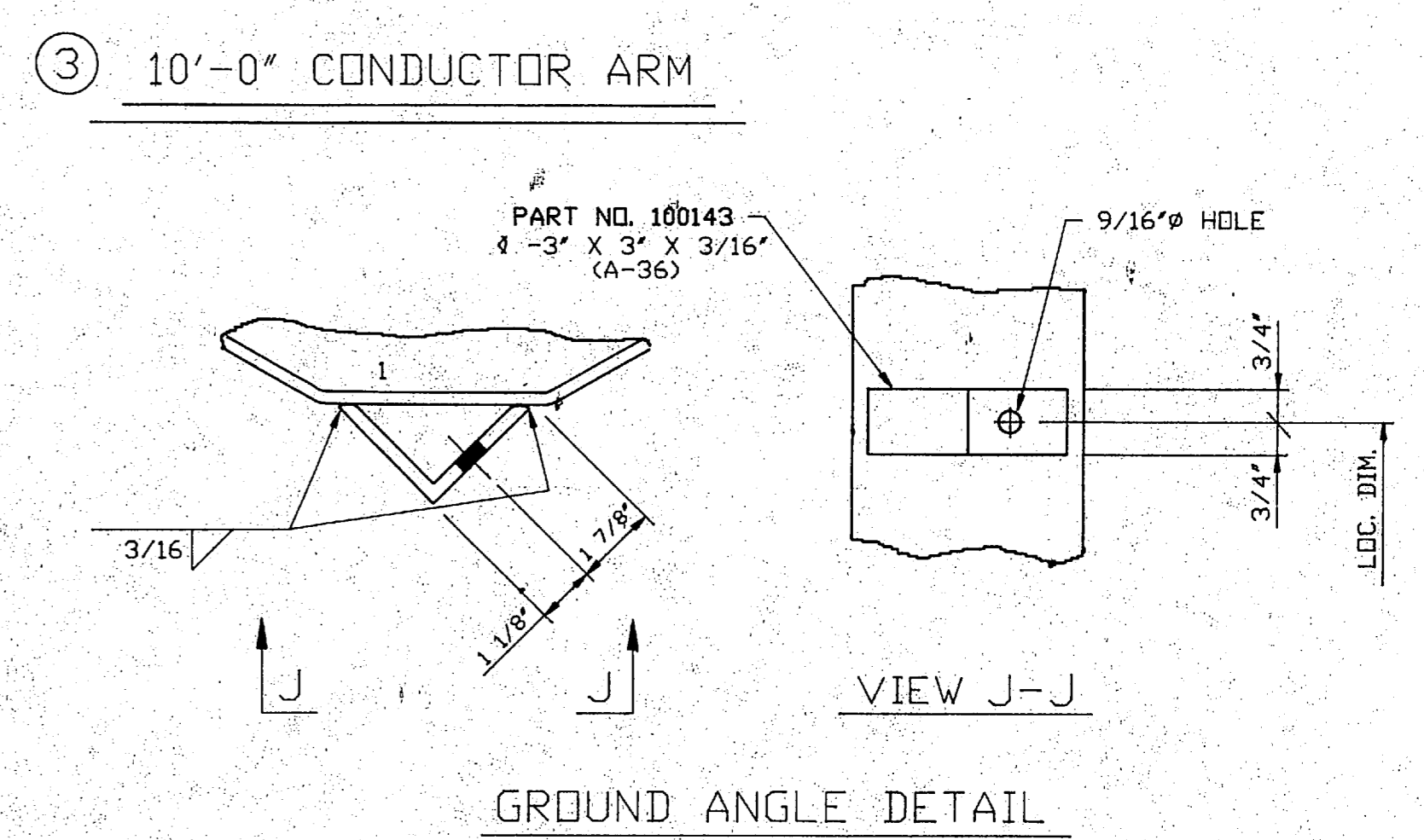
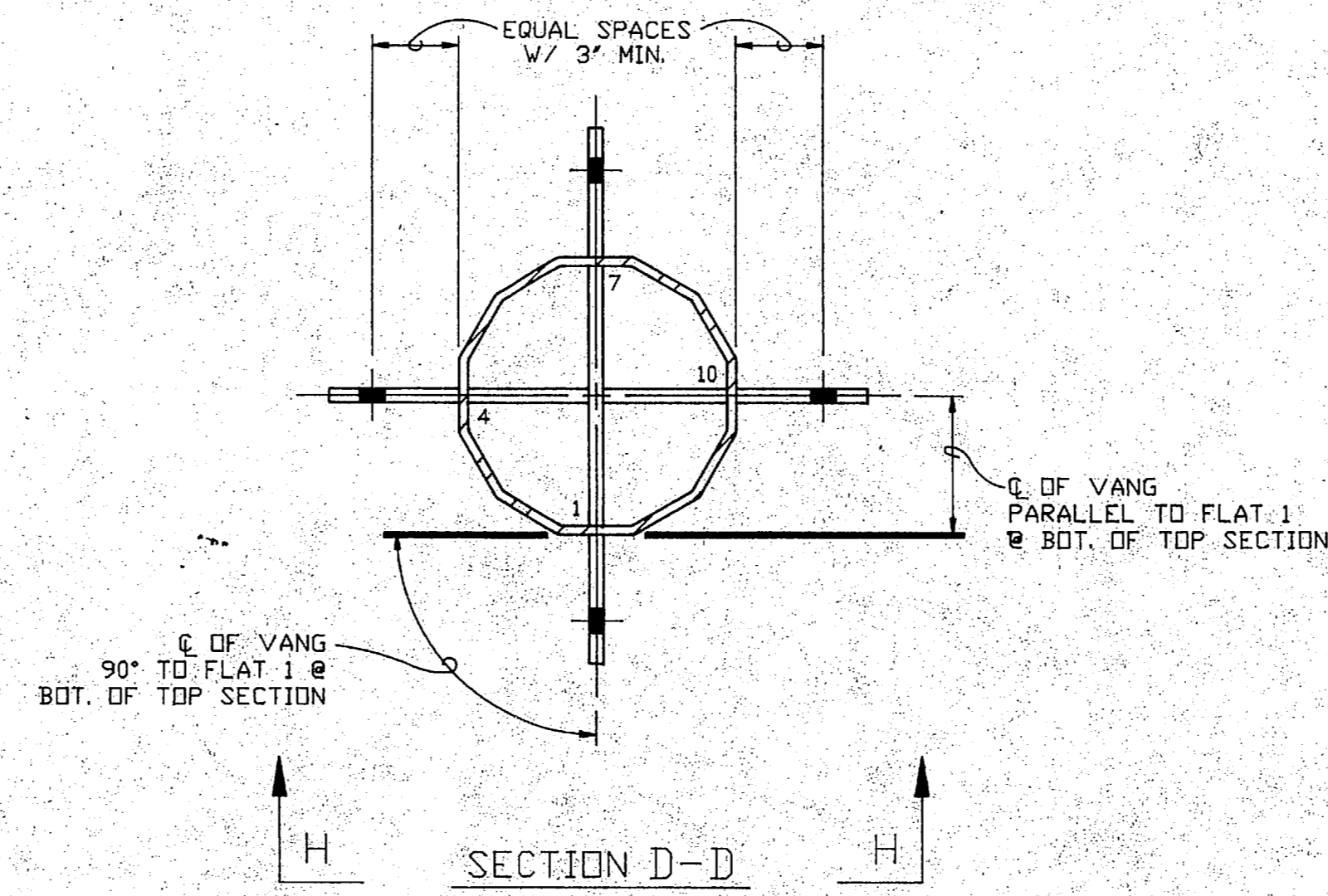
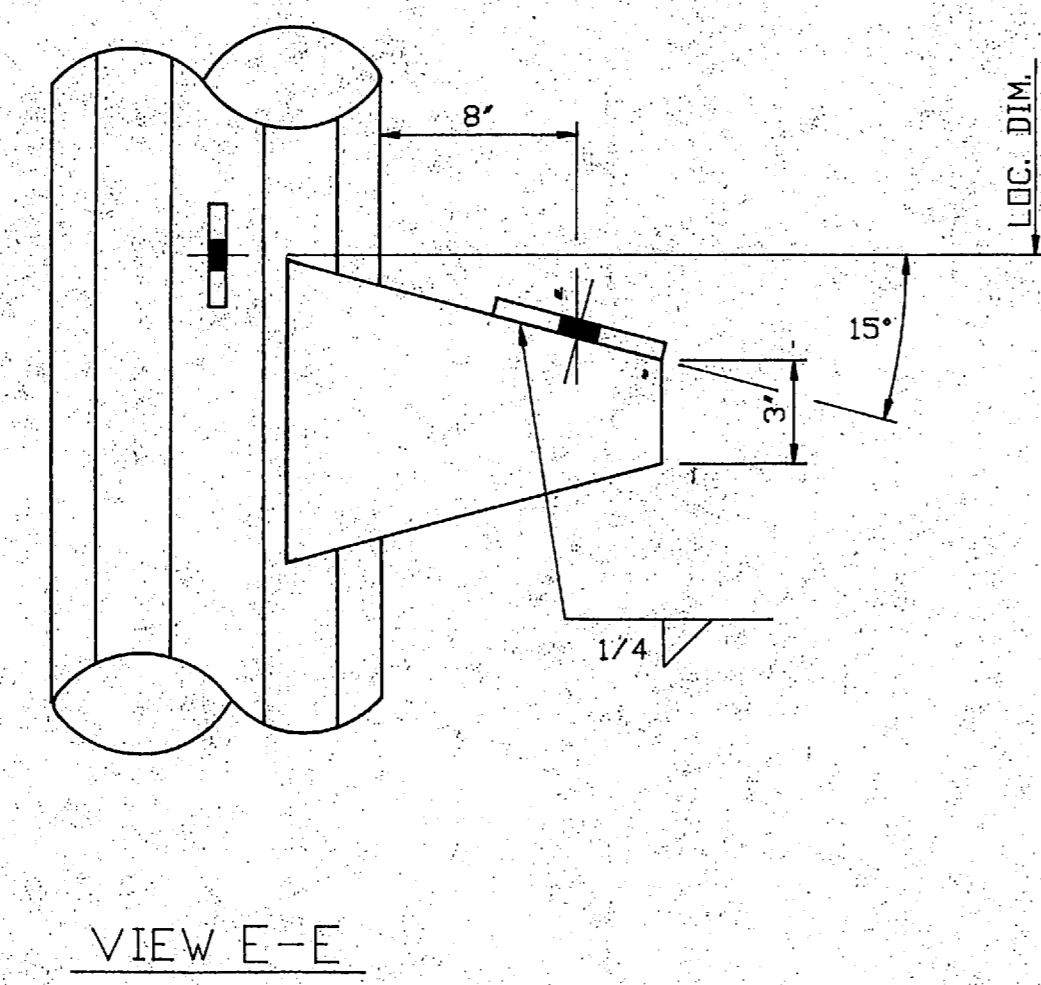
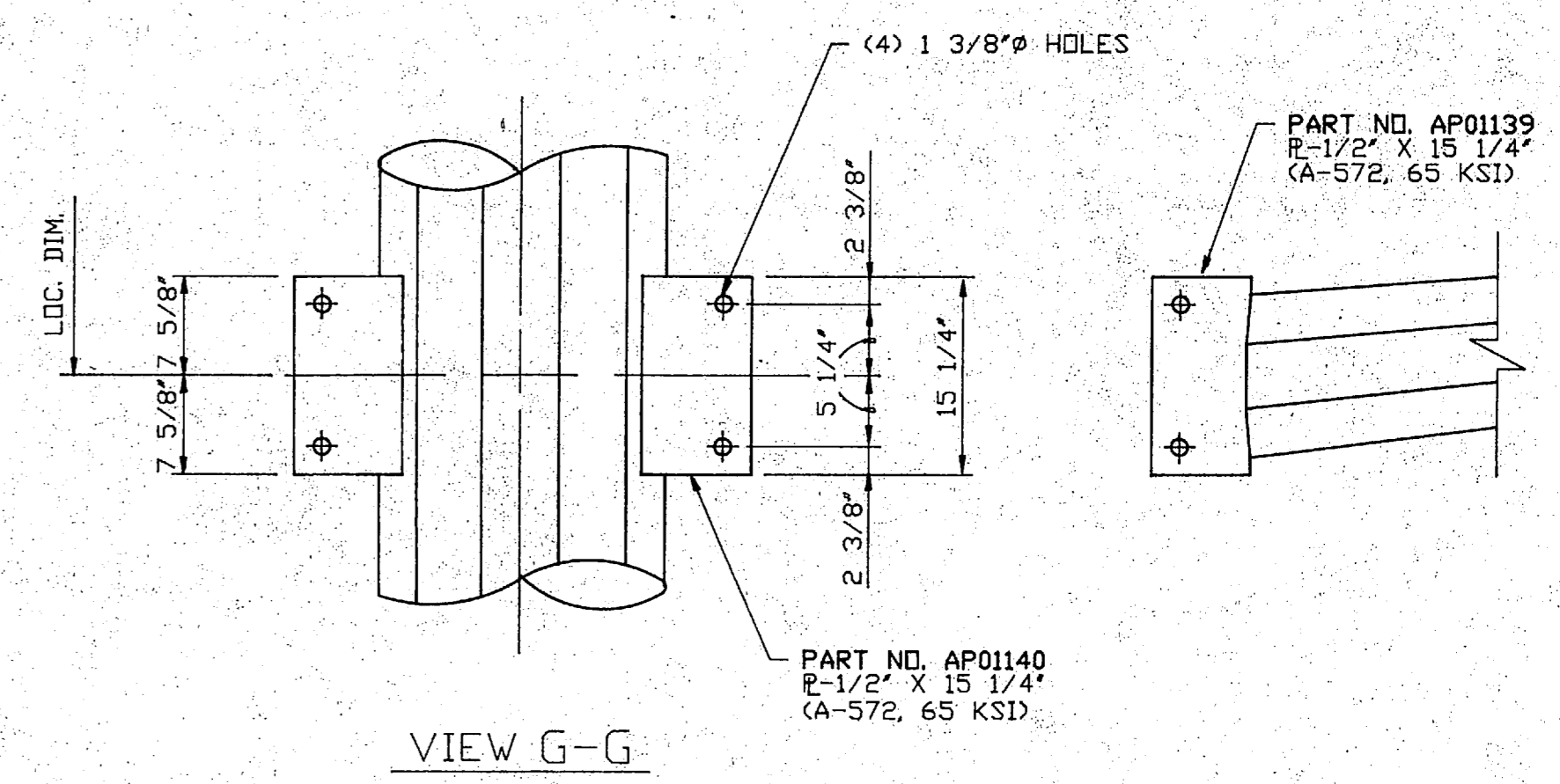
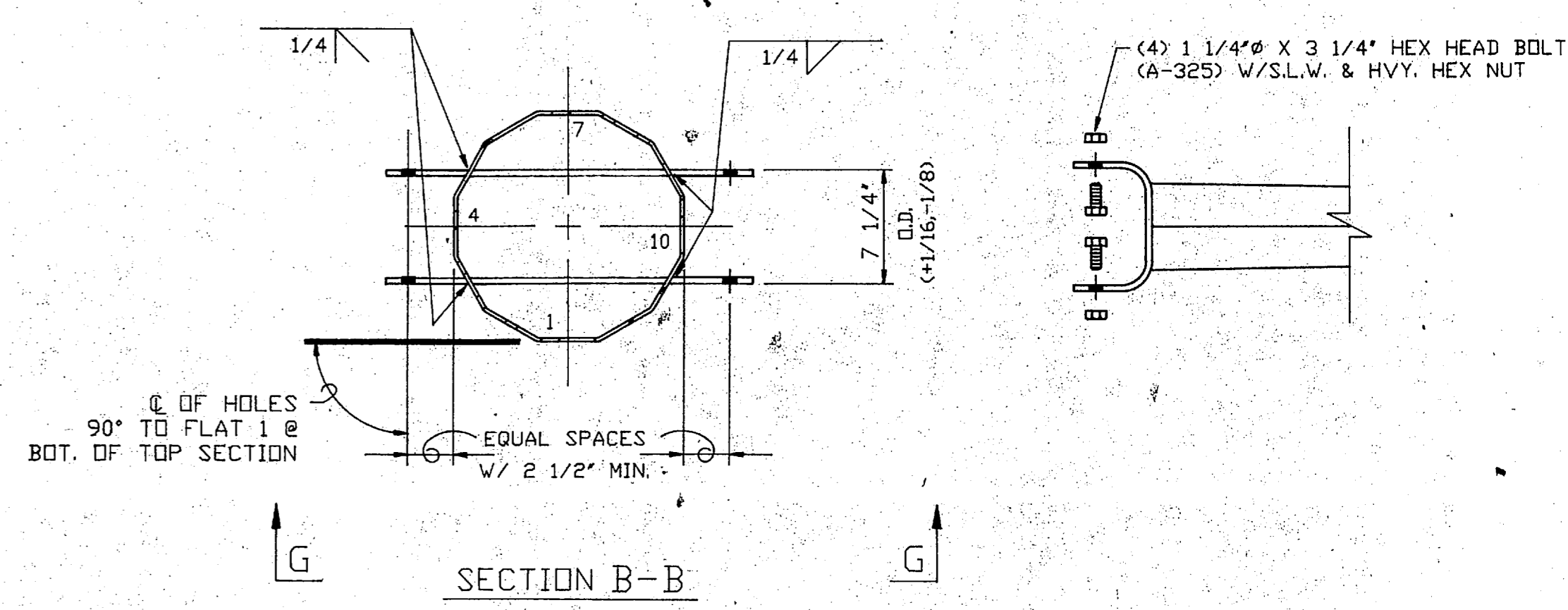
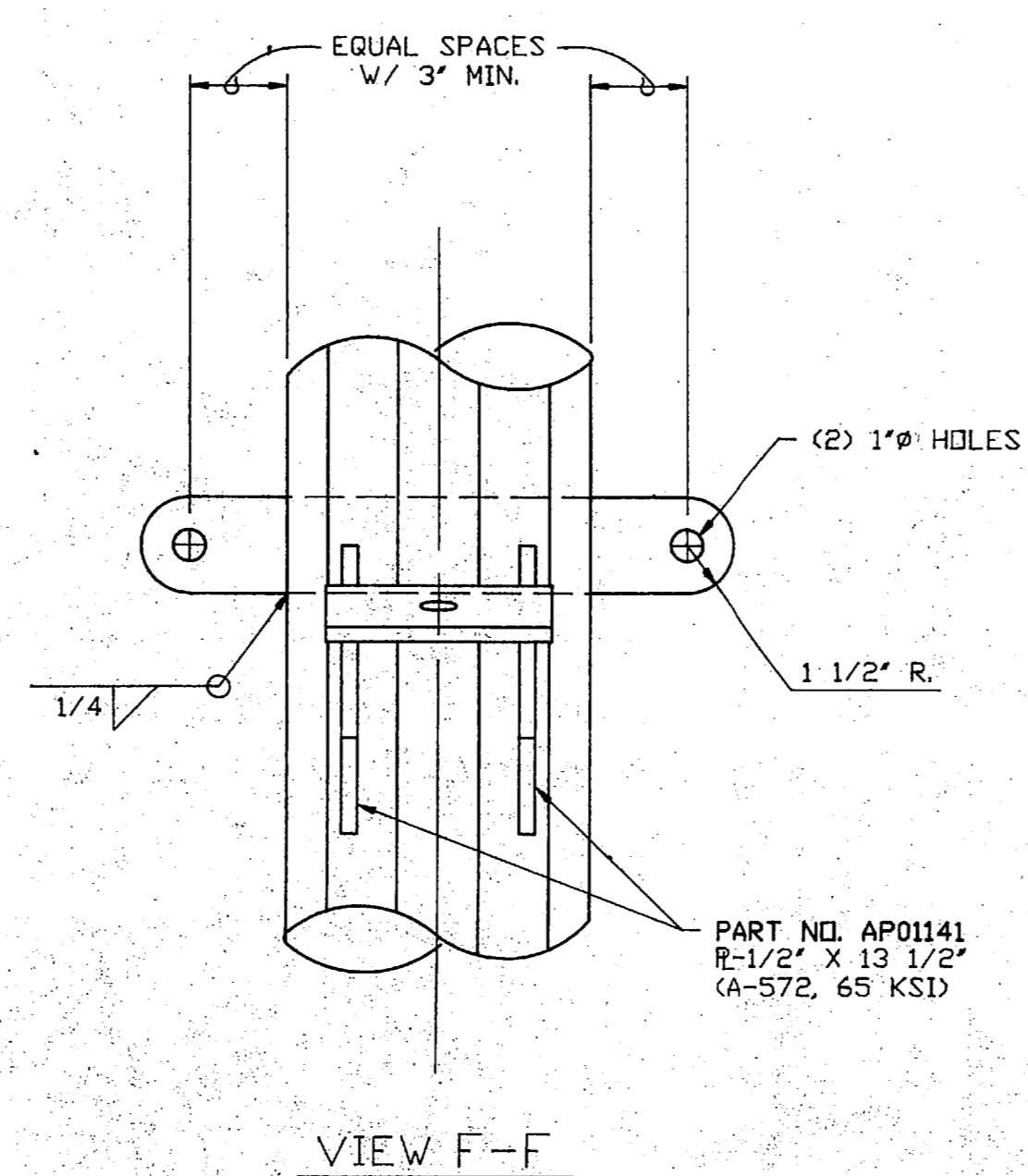
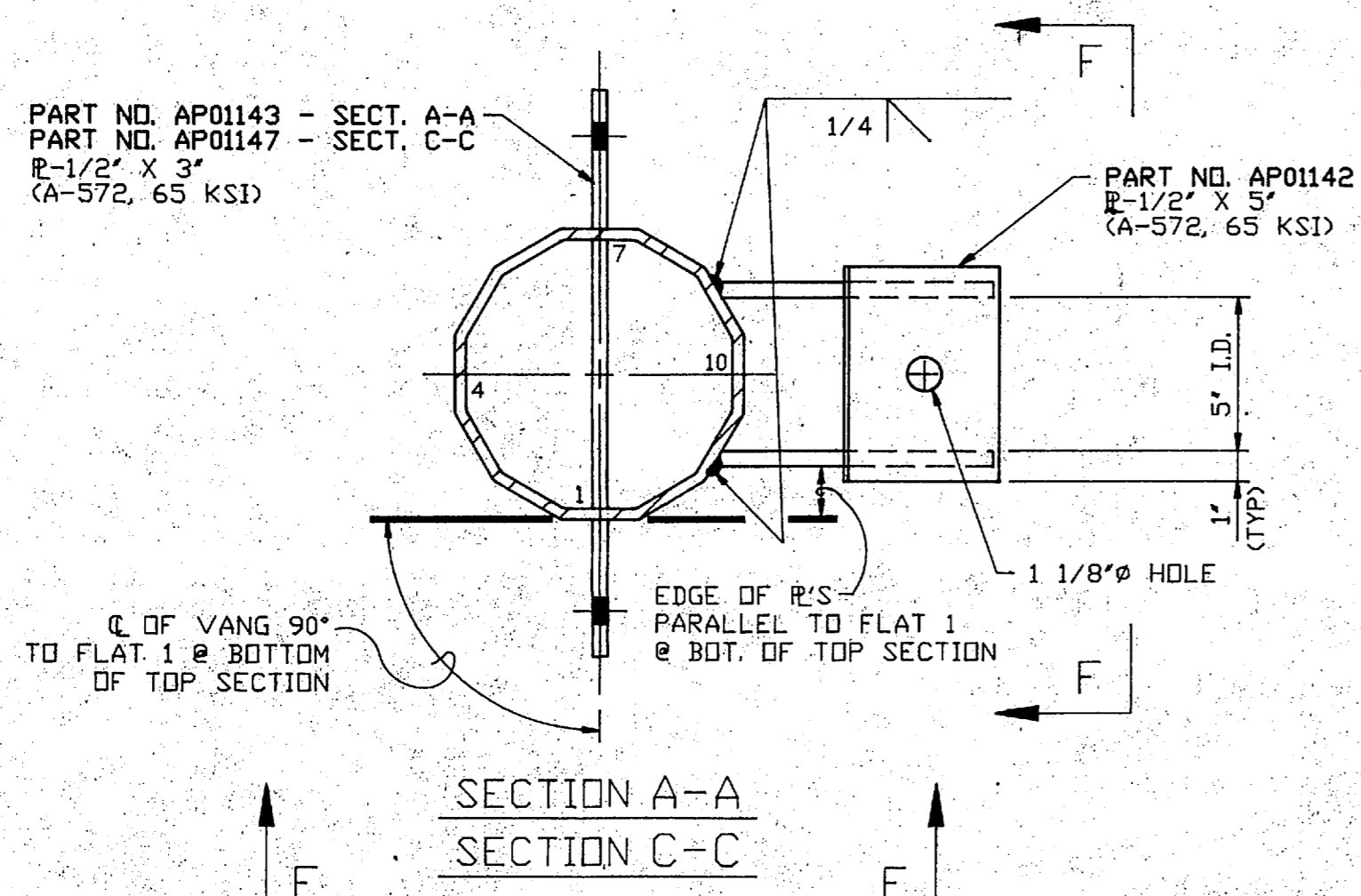
SHOP NOTE:  
ALL TOLERANCES ±1/4" UNLESS OTHERWISE NOTED.



SUB-ASSEMBLY NO. 606184  
HOT-DIP GALVANIZED

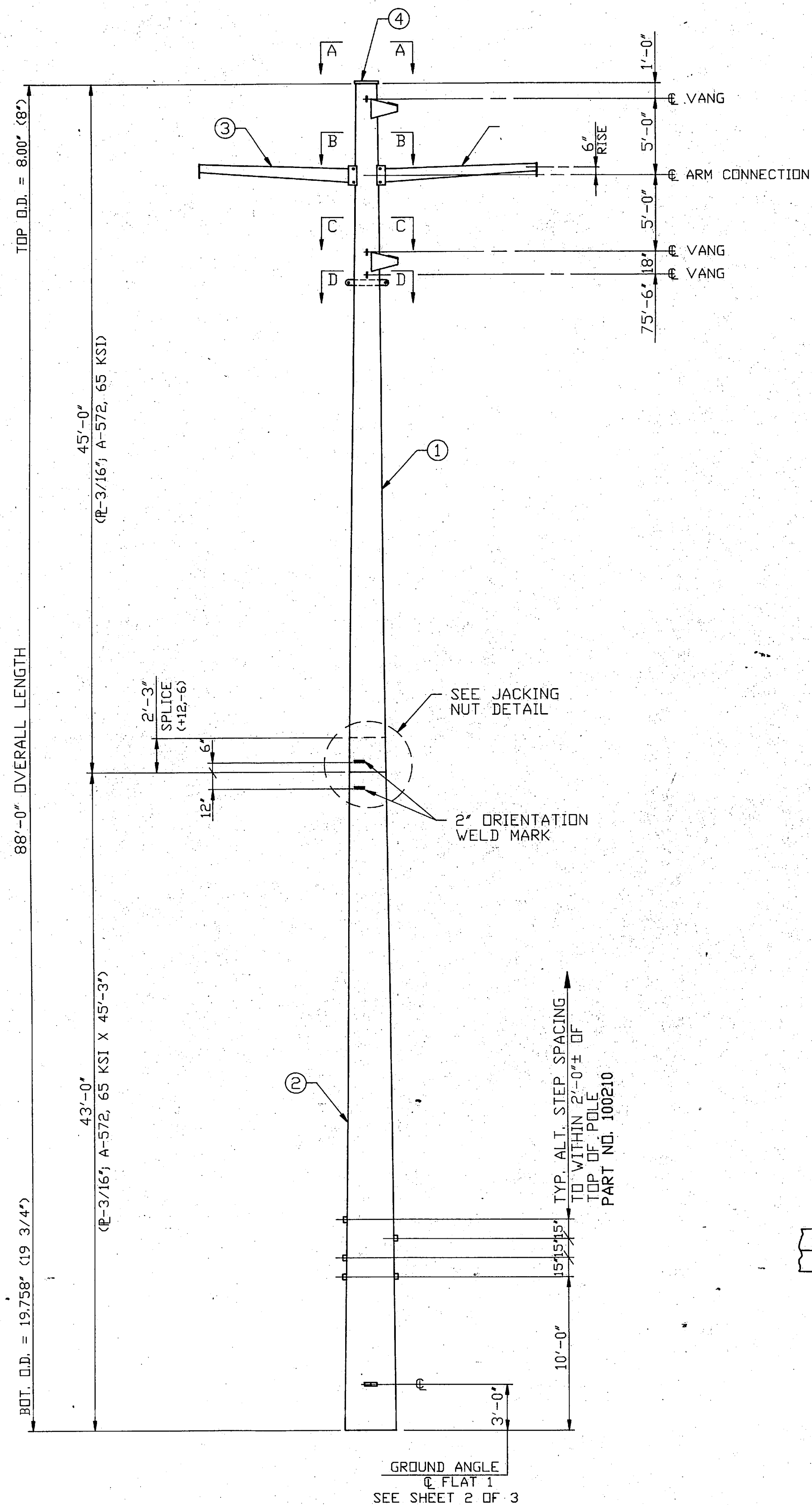
AMERICAN POLE STRUCTURES COMBUSTION ENGINEERING, INC. <b>COMBUSTION ENGINEERING</b>											
TITLE MILL POWER SUPPLY .88'-0" 13 KV DISTRIBUTION POLE DISTRIBUTION ARM SUB-ASSEMBLY											
REV	DESCRIPTION	DATE	BY	CHK	APP	CUST ORDER NO.	DWN	CHK	APP	DATE	SCALE
1	REV. PER CLIENT APPROVAL	3/87	MS	W/II		C36492	KS	AP	DB	3/87	N.T.S.
The information and data contained hereon is confidential and should not be reproduced, copied, or disclosed in whole or in part, without the expressed written consent of AMERICAN POLE STRUCTURES, a wholly owned subsidiary of COMBUSTION ENGINEERING, INC., Houston, Texas.							APS ORDER NO.	SHEET	DRAWING NO.	REV	
							71240	3 OF 3	806028	1	





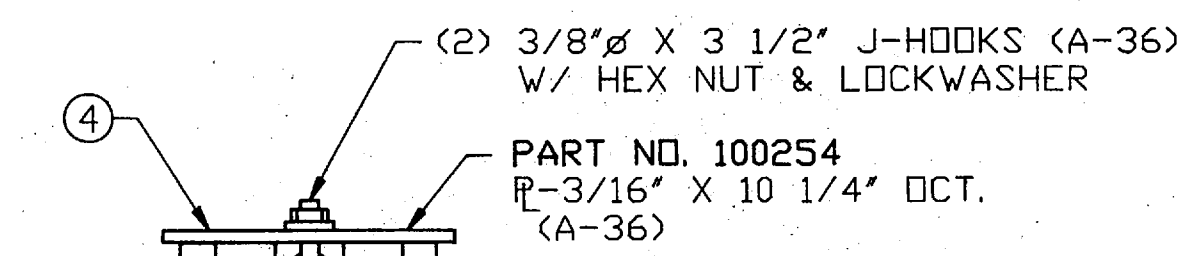
AMERICAN POLE STRUCTURES COMBUSTION ENGINEERING, INC.										
COMBUSTION ENGINEERING										
TITLE MILL POWER SUPPLY 88'-0" 13 KV DISTRIBUTION POLE POLE SECTIONS & DETAILS										
REV.	DESCRIPTION	DATE	BY	CHK	APP	CUST ORDER NO.	DWN	CHK	APP	SCALE
						C36492	KS	AP	DB	35 87 N.T.S.
The information and data contained hereon is confidential and should not be reproduced, copied, or disclosed in whole or in part, without the expressed written consent of AMERICAN POLE STRUCTURES, a wholly owned subsidiary of COMBUSTION ENGINEERING, INC., Houston, Texas.						APS ORDER NO.	SHEET	DRAWING NO.	REV	
						71240	2 OF 3	806028	0	



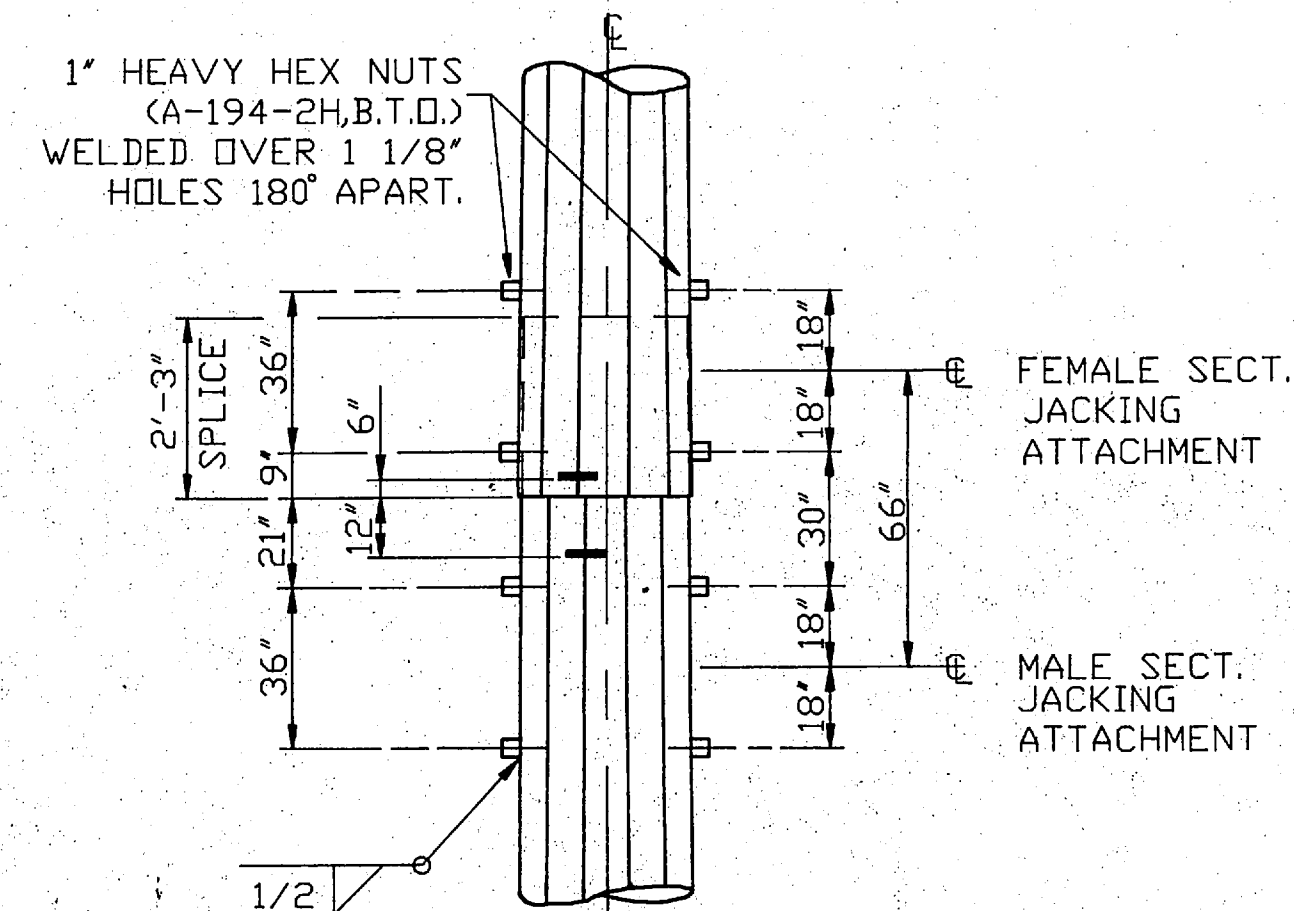


88'-0" STRUCTURE ILLUSTRATED

TAPER = .14000 IN/FT

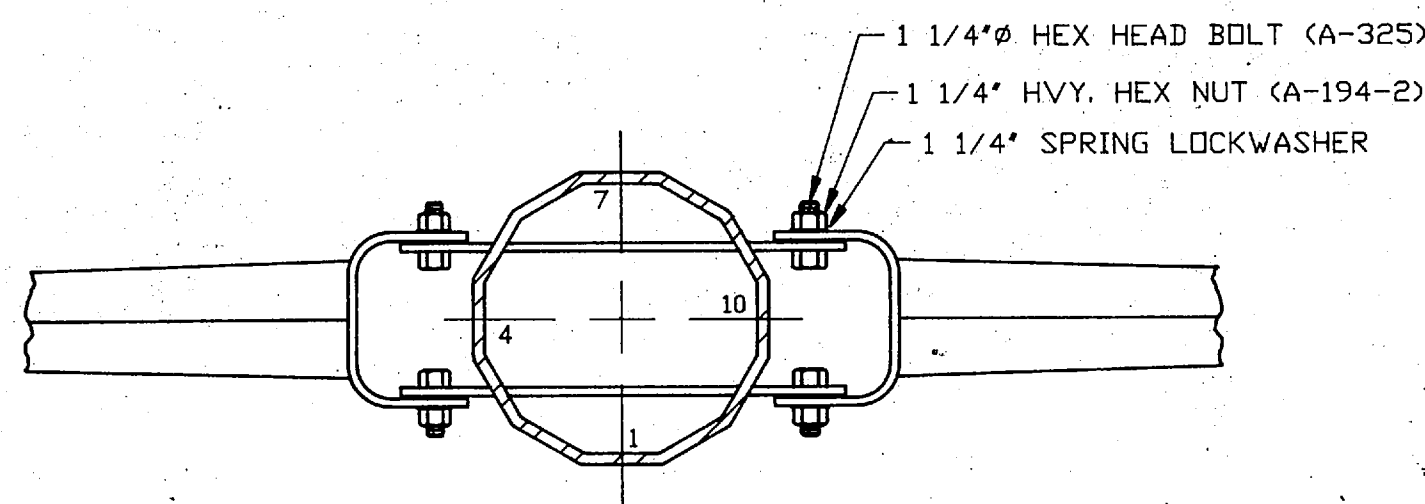


POLE TOP DETAIL



JACKING NUT DETAIL

TYPICAL AT EACH SPLICE LOCATION.



ARM CONNECTION

ERECTION BILL OF MATERIAL  
(QTY. SHOWN FOR ONE STR.)

QTY	ITEM	MARK NO.	PART NO.	DESCRIPTION	FINISH V.T.E.A. ITEM NO.
1	①	712280	SF00574	TOP SECTION: P-3/16" X 45'-0"	1272
1	②	712281	SF00575	BOT. SECTION: P-3/16" X 45'-3"	1618
2	③	606184	SF00576	DIST. ARM: P-3/16" X 10'-2"	209
* 8		A2-G-12-032	A2-G-12-032	1 1/4" Ø X 3 1/4" HEX HEAD BOLT (A-325)	
* 8		E1-G-12-000	E1-G-12-000	1 1/4" HVY. HEX NUT (A-194-2)	
* 8		C3-G-12-000	C3-G-12-000	1 1/4" SPRING LOCKWASHER	
* 1	④	100254	100254	POLE TOP: P-3/16" X 10 1/4" OCT. (A-36)	
* 2		100000	100000	3/8" Ø X 3 1/2" J-HOOK (A-36)	
* 2				3/8" HEX NUT (A-307)	
* 2				3/8" SPRING LOCKWASHER	
1	⑤	806028H	806028H	HARDWARE BOX	72
				* INDICATES TO BE SHIPPED IN HARDWARE BOX	
* 162				200 007 POLE STEPS	

P.D. ITEM NO.	QTY.	ASSY NO.	STR. HT.	STR. WT.
1	2	806028	88'-0"	

GENERAL NOTES

- All pole sections will have orientation and splice indication weld marks to be used for proper orientation of pole sections prior to engaging splices. The lower weld mark at each splice will be used to determine sufficient splice engagement. The upper section will be engaged to within approximately 12" (+) of this mark.
- All poles and arms will be hot-dipped galvanized per ASTM Spec. A-123 after fabrication. All tubular shapes will have holes and/or slots to provide for adequate galvanized drainage and handling. All internally threaded holes will be retapped to remove zinc build-up and coated with grease to prevent rusting. Hardware will be hot-dipped galvanized per ASTM Spec. A-153.
- All items listed in the Bill of Materials will be identified with their respective mark numbers. Marking of major items will be by identification plate (3/4" high letters stamped in 11 GA. material) welded to the sub-assemblies. Other items will be marked with permanent ink or tagged and shipped in burlap bags.
- All poles ship unassembled.
- Bolts and hardware for arms will be shipped in place wherever possible. Each major item will be shipped as an assembled unit. Other item numbers may be shipped in boxes, burlap bags or wired together.
- All splice sections will have 1" heavy hex nuts welded on for use with a hydraulic jacking unit. Reference APS Drawing No. 100893, Rev. 2, for jacking unit instructions.
- Refer to APS Drawing No. 100210, Rev. 2, for step lug. Steps to be AMERICAN POLE #200007 OR SIMILAR.
- Removable pole caps with J-hooks will be furnished for each structure.

AMERICAN POLE STRUCTURES  
COMBUSTION ENGINEERING, INC.  
COMBUSTION ENGINEERING

TITLE  
MILL POWER SUPPLY  
88'-0" 13 KV DISTRIBUTION POLE  
ERECTION DRAWING

REV.	DESCRIPTION	DATE	BY	CHK	APP	CUST ORDER NO.	DWN	CHK	APP	DATE	SCALE
						C36492	KS	AP	DB	3/11/87	N.T.S.
						APS ORDER NO.	SHEET			DRAWING NO.	REV.
						71240	1 OF 3			806028	0

