



UNITED STATES MARINE CORPS
MARINE CORPS AIR STATION
NEW RIVER, JACKSONVILLE
NORTH CAROLINA 28545-5001

ASO 11100.1H
S-4
21 Nov 1985

AIR STATION ORDER 11100.1H

From: Commanding Officer
To: Distribution List

Subj: ~~Assignment of Buildings and Structures~~

Ref: (a) AS(H)O 11104.2G - *wrong H.*
(b) BO P11014.1G
(c) MCO P11000.12B
(d) MCO P11000.5E
(e) AS(H)O 11013.1D

Encl: (1) Building Assignments
(2) Format for Requesting Building or Structure Assignment, Reassignment, and/or Disposition
(3) Format for Requesting Building Relocation

1. Purpose. To assign Marine Corps Air Station (MCAS), New River real property facilities (buildings and structures) to specific departments, activities, and tenant commands, and to promulgate instructions for the assignment, reassignment, and/or disposition of real property facilities at MCAS, New River.

2. Cancellation. ASO 11100.1G.

3. Background. The Commanding Officer, MCAS, New River, has the responsibility for the assignment of all buildings and structures aboard MCAS, New River. The procedures established in this Order will ensure:

- a. Maximum efficient utilization of available facilities.
- b. Conformity with future development plans and the approved Basic Facilities Requirements Lists (BFRL's) for MCAS, New River.
- c. Compliance with pertinent fire protection and safety regulations.
- d. Accurate maintenance of plant account records.
- e. Station activities and tenant organizations are informed as to assigned facilities for which police responsibilities must be performed in accordance with reference (a).

f. Maintenance actions are taken to maximize the useful life all facilities in accordance with reference (b).

4. Information

a. Enclosure (1) lists all real property facilities that are the responsibility of the Commanding Officer, MCAS, New River. Reference (c) provides specific guidance as to the acquisition, designation, use, siting, relocation, and disposal of buildings and structures. Reference (c) also addresses relocatable building projects. Other aspects of real property facilities management are outlined in reference (d). Reference (e) provides guidance and instructions for self-help projects, real property projects (minor construction projects), major repair projects, and military construction projects. Addressees are encouraged to periodically review enclosure (1) and report all discrepancies to the Commanding Officer, MCAS, New River (Attn: S-4 Officer).

b. Assignments are usually made to specific departments, activities, and tenant commands at MCAS, New River. Wherein a facility is shared, the senior specific department, activity, or tenant command shall be assigned overall responsibility for the facility and its surrounding grounds. The responsible unit will be designated in enclosure (1) by underlining, e.g., MCAS/MAG-29/MATCS-28.

c. MCAS, New River department/activity heads, and tenant commanding officers assigned real property facilities are responsible for:

(1) Compliance with pertinent fire protection and safety regulations.

(2) Compliance with current Federal energy conservation directives.

(3) Ensuring that area police is accomplished, in accordance with reference (a).

(4) Ensuring that all facilities projects, maintenance, and repair work requests are submitted in a timely manner, in accordance with reference (e).

5. Action

a. Procedures for Assignment, Reassignment, and Disposition. When a department/tenant command desires assignment, reassignment, or other disposition of a building or structure, a request shall be forwarded to the Commanding Officer, MCAS, New River (Attn: S-4 Officer) using enclosure (2) as a guide. Upon approval and prior occupancy or dispossession of assigned facilities, the requestor

will arrange with the S-4 Officer, MCAS, New River, for a joint inspection to ascertain the physical condition of said facilities and to conduct an inventory of all collateral equipment and plant account property located therein. Upon completion of the joint inspection and inventory, all items of collateral equipment and plant account property physically located on the premises becomes the responsibility of the assignee. Both the assignee and assignor will report in writing, via respective chains of command, any discrepancies noted during inspection, to the Commanding Officer, MCAS, New River, within three days of the reassignment/disposition.

b. Procedures for Relocating, Erecting/Fabricating, or Modifying. When a department/tenant command desires to relocate, erect/fabricate, or modify a building or structure, a request will be forwarded to the Commanding Officer, MCAS, New River (Attn: S-4 Officer), using enclosure (3) as a guide. Upon receipt of approval and prior to occupancy, a physical inspection will be conducted under the direction of the MCAS, New River S-4 Officer to ensure conformance with the site plans, plant account, approved Air Station BFRL's, safety and fire protection, and any environmental requirements.

c. The following actions are strictly prohibited, unless specific written authority has been granted by the Commanding Officer, MCAS, New River:

(1) Use of a building for other than the purpose currently assigned in enclosure (1).

(2) Use of a building by other than the department/tenant command currently assigned in enclosure (1).

(3) Relocating a building or structure to other than the currently authorized site.

(4) Erecting or fabricating a new building or structure, i.e., lumber shed, hardback tent, etc.

(5) Removal of collateral equipment and common items (fixtures, light globes, wash basins, window screens, doors, etc.) which are normally a part of the building.

(6) Rewiring any structure via self-help.

(7) Any structural alteration or extension of utilities.

6. Applicability. Having received the concurrence of the Commanding Officers, Marine Aircraft Group 26, Marine Aircraft Group 29, Marine Air Traffic Control Squadron 28, Marine Wing Support Group 27, Detachment "A", and the Officer in Charge, Marine Wing

ASO 11100.1H

21 Nov 1985

Communication Squadron 28, Detachment "A", this Order is applicable to those commands.

B. D. Waddell
B. D. WADDELL

DISTRIBUTION: Cat I(A), CAT III

21 Nov 1985

<u>BLDG NO.</u>	<u>BLDG DESIGNATION</u>	<u>ASSIGNED TO</u>	<u>UNIT OF MEASUREMENT</u>	<u>AREA</u>
103	ElecDistBldg	Maint, MCB	KV	225
X105	SquadronHqtrs	MWCS-28, Det "A"	SF	600
106	WaterStrgBldg	Maint, MCB	SF	144
107	StorageTankPot	Maint, MCB	GA	225,000
108	StorageTankPot	Maint, MCB	GA	200,000
110	WtrTrmntFacil	Maint, MCB	SF	12,174
111 (SAS)	BusStopShltr	FacOps, MCAS	SF	200
112	SpecServOffice	SpecServ, MCAS	SF	2,832
114	AutoHobbyShop	SpecServ, MCAS	SF	8,520
116	AutoHobbyShop	SpecServ, MCAS	SF	1,332
117	AutoVehMntShd	BaseMotorTrans	SF	392
118	AutoVehMntShd	BaseMotorTrans	SF	5,000
119	AutoVehMntShd	BaseMotorTrans	SF	2,880
120	HazFlamSthse	Maint, MCB	SF	360
121	Pav/GrEqShed	Maint, MCB	SF	660
122	PoliceStation	MP, MCAS	SF	3,500
	PublicWksSh	Maint, MCB	SF	7,000
123	VehicleWashFac	SpecServ, MCAS	SF	2,100
124	PublicWksSh	Maint, MCB	SF	6,600
127	VehWashPlatfm	Maint, MCB	SF	750
128	HazFlamSthse	Maint, MCB	SF	308
129	ValveHouse	Maint, MCB	SF	56
130	GenWhse	Sup, MCAS	SF	16,547
	AdminOffice	Sup, MCAS	SF	1,944
	GenWhse, MC	Sup, MCAS	SF	1,029
131	S/MainsPmp/Fac	Maint, MCB	SF	144
132	Sm/Arm/PyroMag	Sup, MCAS	SF	80
133	Gate/SenHouse	MP, MCAS	SF	48
134 (SAS)	SandStorageBin	Maint, MCB	SF	100
135	HazFlamSthse	MHL/A-167	SF	360
136	AcftRdyFlStg	Sup, MCAS	GA	100,000
137	AcftRdyFlStg	Sup, MCAS	GA	50,000
138	AcftRdyFlStg	Sup, MCAS	GA	50,000
139 (SAS)	ShltrMiscPipe	Sup, MCAS	SF	192
140	AcftRdyFlStg	Sup, MCAS	GA	10,000
141	AcftRdyFlStg	Sup, MCAS	GA	10,000
142	Ver/FuelTk	Sup, MCAS	GA	10,000
143	FillingStaBldg	Sup, MCAS	SF	680
144	ShltrMiscPipe	Sup, MCAS	SF	400
145	AC TrkFuelFac	Sup, MCAS	GM	500
146	ShltrMiscPipe	Sup, MCAS	SF	280
147	TkTr/CrUnFac	Sup, MCAS	OL	15
149	SeptTkUnFld	Maint, MCB	GA	1,000
150	AcftRdyFlStg	Sup, MCAS	GA	105,000
151	AcftRdyFlStg	Sup, MCAS	GA	50,000
153	VehWashPlatFM	SpecServ, MCAS	SF	600
154	AcftRdyFlStg	Sup, MCAS	GA	120,000

ENCLOSURE (1)

21 Nov 1985

<u>BLDG NO.</u>	<u>BLDG DESIGNATION</u>	<u>ASSIGNED TO</u>	<u>UNIT OF MEASUREMENT</u>	<u>AREA</u>
157 (SAS)	VehGreaseRack	SpecServ, MCAS	EA	1
160	PwShopsExpend	Maint, MCB	SF	2,112
167	TreatmentRm	MP, MCAS	SF	336
168	DogKennel	MP, MCAS	SF	1,136
181	VehWashPlatFm	SpecServ, MCAS	SF	504
190	WtrTrmtFacil	Maint, MCB	SF	144
191	WtrTrmtFacil	Maint, MCB	SF	108
197 (SAS)	HistoricalMkrs	FacOps, MCAS	EA	1
199 (SAS)	TransformerPad	Maint, MCB	EA	1
200	Bank	Serv, MCAS	SF	1,750
201	Library	SpecServ, MCAS	SF	3,000
202	Gymnasium	SpecServ, MCAS	SF	18,246
	SpecServIssOff	SpecServ, MCAS	SF	2,700
	CbtTrngPl/Tk	SpecServ, MCAS	EA	1
203	S/MainsPmp/Fac	Maint, MCB	SF	144
205	BowlingAlley	SpecServ, MCAS	SF	14,080
	SnackStd	CCMS, MCAS	SF	400
206	SewagePumpShd	Maint, MCB	SF	130
207	RacquetballCt	SpecServ, MCAS	EA	2
208	ClubsOffice	CCMS, MCAS	SF	2,000
	PackageStore	CCMS, MCAS	SF	3,000
	SnackStd	CCMS, MCAS	SF	4,810
209	GarbageHouse	CCMS, MCAS	SF	100
211	AdminOffice	FamilyServicesCtr	SF	1,520
	AdminOffice	MP, MCAS	SF	5,128
	JointPublicAffairs	JointPublicAffairs	SF	4,304
	Disbursing	Disbursing	SF	4,304
	RedCross/NavRel/CPO	Serv, MCAS	SF	3,000
	BEQ E1-E4	JRC, MCAS	SF	9,625
212	BEQ E1-E4	JRC, MCAS	SF	22,624
213	BEQ E1-E4	MAG-29 HMM-162	SF	22,624
214	BEQ E1-E5	MWCS-28, Det "A"	SF	22,624
215	BEQ E1-E4	H&HS, MCAS	SF	22,624
216	CourtRmFacil	JLC, MCAS	SF	7,541
	AdminOffice	NIS	SF	1,260
217	AdminOffice	MAG-26 (6th MAB)	SF	7,542
	BEQ E1-E4	MAG-26	SF	7,540
	JointDrug&Alcohol	S-1 MCAS	SF	7,540
218	BarberShop	MCX, MCB	SF	600
219 (SAS)	TransStation	Maint, MCB	EA	1
221	GeneratorBldg	NAMTD	SF	100
222	ApplInstrBldg	NAMTD	SF	16,401
224	TeleExBldg	Maint, MCB	SF	1,645
225	RefrigA/CPlant	Maint, MCB	SF	1,584
226	EM DiningFac	FacOps, MCAS	SF	22,204
227	ElecDistrBldg	Maint, MCB	DV	267
228	EmGenBldg	Maint, MCB	SF	100
229	EmGenBldg	Maint, MCB	SF	100

ENCLOSURE (1)

<u>BLDG NO.</u>	<u>BLDG DESIGNATION</u>	<u>ASSIGNED TO</u>	<u>UNIT OF MEASUREMENT</u>	<u>AREA</u>
230	SewagePumpShd	Maint, MCB	SF	120
231	ChildCareCenter	SpecServ, MCAS	SF	3,000
232	FamilyServicesCtr	Serv, MCAS	SF	13,000
233	Education	Education	SF	4,545
234	PostOffice	Adj, MCAS	SF	1,750
236	Chapel	Chap, MCAS	SF	9,729
238	GeneratorBldg	Maint, MCB	SF	143
239	GeneratorBldg	Maint, MCB	SF	143
240	Theater	SpecServ, MCAS	SF	7,116
246	PlayFld/Facil	SpecServ, MCAS	EA	1
248	PlayFld/Facil	SpecServ, MCAS	EA	1
252	TennisCourt	SpecServ, MCAS	EA	4
254	HandballCt	SpecServ, MCAS	EA	2
299	ThriftShop	Serv, MCAS	SF	800
302	Dispensary	Naval Hospital	SF	8,849
	DentalClinic	NRDC	SF	3,792
303	C/HlcpLdgPad	Naval Hospital	SY	75
310	StorTank/ElPot	Maint, MCB	GA	300,000
311	ElecDistrBldg	Maint, MCB	KV	225
312	ApplInstrBldg	NAMTD	SF	8,749
	AreaAuditor	H&HS, MCAS	SF	1,000
	AvTraining	S-3, MCAS	SF	2,183
314	OpenStrgArea	NAMTD	SY	56
315	OpenStrgArea	NAMTD	SY	119
316	OpenStrgArea	NAMTD	SY	44
320	FlightSimulatorBldg	AvnTrn, MCAS	SF	12,837
402	ExchServSta	Exch, MCB	SF	810
410	ExchServSta	Exch, MCB	SF	2,024
414	Commissary	SupServ, MCAS	SF	12,965
416	GenWhse	SupServ, MCAS	SF	7,400
419	HeatFuelStrg	Maint, MCB	GA	25,000
420	HeatFuelStrg	Maint, MCB	GA	25,000
421	HeatFuelStrg	Maint, MCB	GA	25,000
423	OperVehGrge	AfldOps, MCAS	SF	960
424	GenStgA/G/ORG	MAG-26 SUPPLY	SF	41,678
	AdminOffice	MAG-26 SUPPLY	SF	250
425	DataProcessing	MAG-26 SUPPLY (GASSC)	SF	6,075
426	SewagePumpShd	Maint, MCB	SF	64
427	RATCC	AfldOps, MCAS	SF	4,851
501	VehWashPlatfm	AfldOps, MCAS	SF	400
502	Fire/RescueSta	AfldOps, MCAS	SF	9,541
504	MntceHang OH	MAG-26	SF	36,784
	MntceHang 01	MAG-26	SF	35,983
	MntceHang 02	MAG-26	SF	26,144
	Reg/GroupHdq	MAG-26	SF	12,600
	ParachuteShop	MAG-26	SF	2,928
	ControlTower	AfldOps, MCAS	SF	752

ASO 11100.1H

21 Nov 1985

<u>BLDG NO.</u>	<u>BLDG DESIGNATION</u>	<u>ASSIGNED TO</u>	<u>UNIT OF MEASUREMENT</u>	<u>AREA</u>
505	AcftWashRack	MAG-26	SY	2,171
506	WtrDistBldg	Maint, MCB	SF	240
507	AcftRdyFlStg	Sup, MCAS	GA	20,000
508	AcftRdyFlStg	Sup, MCAS	GA	20,000
509	ShltrMiscPipe	Sup, MCAS	SF	187
511	AC DirFuelSta	Sup, MCAS	GM	1,200
513	AcftWashRack	MAG-26	SY	1,916
	AcftRinseFac	MAG-26	SY	120
514	WtrDistBldg	MAG-26	SF	323
515	MntceHang OH	MAG-26	SF	52,480
	MntceHang 02	MAG-26	SF	20,992
	MntceHang 01	MAG-26	SF	20,992
516	HazFlamSthse	MAG-26	SF	100
517	SewagePumpShd	Maint, MCB	SF	64
518	MntceHang OH	MAG-26 H&MS-26	SF	25,920
	EngineMntShop	MAG-26 H&MS-26	SF	18,958
	Mt-Acft/SprStg	MAG-26 H&MS-26	SF	13,458
	MntceHang 02	MAG-26 H&MS-26	SF	12,305
	AirFrameShop	MAG-26 H&MS-26	SF	9,873
519	SandBlastFac	MAG-26 H&MS-26	SF	432
520	PublicWorksShd	Sup, MCAS	SF	414
521	HazFlamSthse	MAG-26 HML-167	SF	100
522	PublicWorksShd	Sup, MCAS	SF	256
525 (SAS)	Shelter	MAG-26	SF	300
526	AcftRdyFlStg	Sup, MCAS	GA	20,000
527	AcftRdyFlStg	Sup, MCAS	GA	20,000
530	HazFlamSthse	MAG-26 HMM-264/261	SF	100
531	PowrChPad/NS	MAG-29 H&MS-29	EA	1
532	PowrChPad/NS	MAG-26 H&MS-26	EA	1
533	PowrChPad/NS	MAG-29 H&MS-29	EA	1
536	PublicToilet	Sup, MCAS	SF	180
537	PowrChPad/SS	MAG-26 H&MS-26	EA	1
538	PowrChPad/NS	MAG-29 H&MS-29	EA	1
539	ExchSnackStnd	Exch, MCB	SF	1,056
544	HazFlamSthse	MAG-26 HMH-362	SF	100
545	HazFlamSthse	AfldOps, MCAS	SF	100
546	COTAM FuelStrg	Sup, MCAS	BL	13
547	COTAM FuelStrg	Sup, MCAS	BL	13
548	COTAM FuelStrg	Sup, MCAS	BL	13
549	COTAM FuelStrg	Sup, MCAS	BL	13
550	LineMntShltr	MAG-26 HML-167	SF	360
551	LineMntShltr	MAG-26 HML-167	SF	360
552	LineMntShltr	MAG-26 HML-167	SF	360
553	HeloInternalStorage	MAG-26	SF	11,250
562	CommContrLnk	AfldOps, MCAS	SF	160
570	GrndApprchPad	AfldOps, MCAS	SY	1,491
571	GCACrewFac	AfldOps, MCAS	SF	1,000

ENCLOSURE (1)

<u>BLDG NO.</u>	<u>BLDG DESIGNATION</u>	<u>ASSIGNED TO</u>	<u>UNIT OF MEASUREMENT</u>	<u>AREA</u>
572	HazFlamSthse	MAG-26 HMT-204	SF	100
573	MeterologicalFac	CommElec,MCAS	EA	1
578	LineShack	AfldOps,MCAS	SF	360
579	ExchSnackStd	MCX,MCB	SF	500
580	MntceHang 01	MAG-29 (VMO-1)	SF	360
581	GenStgA/G/Org	MAG-29 (HML-167)	SF	420
582	MaintFac	MAG-26 (HML-167)	SF	360
583	GenWhseMc	MAG-26 H&MS-26	SF	360
584	GenWhse	NAMTD	SF	360
585	LineMntShltr	MAG-26 H&MS-26	SF	360
586	StorageFac	Sup,MCAS	SF	360
587	LineMaintShelter	MAG-26 (H&MS-26)	SF	360
588	HazFlamSthse	MAG-26 H&MS-26	SF	360
589	MaintShop	MAG-29 HMA-269	SF	360
590	GenWhse	MAG-29 HMA-269	SF	360
591	GenWhse	MAG-29 HMA-269	SF	360
600	HazFlamSthse	MAG-29 HMA-269	SF	100
604	ChildCareCen	SpecServ,MCAS	SF	3,293
606	SewagePumpShd	Maint,MCB	SF	140
607	GeneratorBldg	Maint,MCB	SF	743
608	YouthCenter	Serv,MCAS	SF	1,904
700	HandballCourt	SpecServ,MCAS	EA	2
701	HeatingPlant	Maint,MCB	SF	280
702	BSQ E6-E9	FacOps,MCAS	SF	13,918
703	HeatingPlant	Maint,MCB	SF	280
704	BSQ E6-E9	FacOps,MCAS	SF	13,918
705	BOQ	FacOps,MCAS	SF	67,801
	CentralWhse	FacOps,MCAS	SF	2,633
	AdminOffice/MAO	FacOps,MCAS	SF	1,259
707 (SAS)	C/HlcpLdgPad	FacOps,MCAS	SY	2,500
708	Bathhouse	CCMS,MCAS	SF	1,372
709	OutdrSwimPool	CCMS,MCAS	EA	1
710	CommOffMessOpen	CCMS,MCAS	SF	9,961
711	UHF HomerBldg	CommElec,MCAS	SF	192
715	Antenna-Navig	CommElec,MCAS	EA	1
716	Antenna-Navig	CommElec,MCAS	EA	1
720	Groins/Jettie	FacOps,MCAS	LF	365
800 (SAS)	Antenna-Navig	CommElec,MCAS	EA	1
801 (SAS)	Antenna-Navig	CommElec,MCAS	EA	1
802	Antenna-Navig	CommElec,MCAS	EA	1
803	Antenna-Navig	CommElec,MCAS	EA	1
804	PhotoLab	AvTraining	SF	1,600
805	AirNavigBldg	CommElec,MCAS	SF	800
810	GenWhse	MATCS-28	SF	2,880
	GenWhse	MAG-26 (HMT-204)	SF	2,880
811	CeramicsHobbyShop	SpecServ,MCAS	SF	3,000
812	GenWhse	FacOps,MCAS	SF	4,000

ENCLOSURE (1)

ASO 11100.1H

21 Nov 1985

<u>BLDG NO.</u>	<u>BLDG DESIGNATION</u>	<u>ASSIGNED TO</u>	<u>UNIT OF MEASUREMENT</u>	<u>AREA</u>
813	GenWhse	SpecServ, MCAS	SF	4,000
818	H&HS SqdnHQ	H&HS, MCAS	SF	4,608
819	ElecDistrBldg	Maint, MCB	SF	374
820	AdminOffice, MCASHQ	FacOps, MCAS	SF	3,758
821	Flagpole	FacOps, MCAS	EA	1
822	CommCenter	CommElec, MCAS	SF	1,484
827	WoodHobbyShop	SpecServ, MCAS	SF	2,856
829	Flagpole	FacOps, MCAS	EA	1
831	StaS-4/Fac/Safety	FacOps, MCAS	SF	2,400
832	Storg/PublicToilet	SpecServ, MCAS	SF	960
839	AirportSurvRadar	AfldOps, MCAS	SF	200
840	MntceHang OH	AfldOps, MCAS	SF	10,428
	MntceHang 01	AfldOps, MCAS	SF	3,464
	ParachuteShop	AfldOps, MCAS	SF	640
	MntceHang 02	AfldOps, MCAS	SF	500
841	ElecDistrBldg	Maint, MCB	SF	204
843	AcftOperBldg	AfldOps, MCAS	SF	6,336
845	COTAM FuelStrg	AfldOps, MCAS	BL	238
846	SmlCraftBerth	FacOps, MCAS	FB	120
847	LandCraftRamp	FacOps, MCAS	EA	1
849	GenWhse	MAG-26 (MABS-26) NBC	SF	3,155
850	SewagePumpShd	Maint, MCB	SF	197
852	SeptcTk.DnFld	Maint, MCB	GA	1,000
853	CeramicWhse	SpecServ, MCAS	SF	192
854	CeramicWhse	SpecServ, MCAS	SF	360
864	HistoricalMkrs	AfldOps, MCAS	EA	1
865	HazFlamSthse	AfldOps, MCAS	SF	100
866	OrdnanceBldg	FacOps, MCAS	SF	360
867	StdbGenBldg	Maint, MCB	SF	143
868 (SAS)	HazMatStrge	FacOps, MCAS	SF	1,050
873	HazFlamSthse	H&HS, MCAS	SF	98
900	AcftCalPad	AfldOps, MCAS	SY	1,257
901	SNCO Club	CCMS, MCAS	SF	13,728
902	SewagePumpShd	Maint, MCB	SF	64
903	TransmitterBldg	CommElec, MCAS	SF	2,518
1001	SewagePumpShd	Maint, MCB	SF	144
1002	A/MainPump/Fac	Maint, MCB	SF	144
1003	SewagePumpShd	Maint, MCB	SF	180
1004	PlayingCourts	SpecServ, MCAS	EA	1
1005	BasketballCt	SpecServ, MCAS	EA	1
1006	EmGenBldg	Maint, MCB	SF	143
1011-1335	P/Q Capehar/Enl	Housing, MCB	EA	325
2001	SewagePumpShd	Maint, MCB	SF	160
2002	StorageTankPot	Maint, MCB	SF	300,000
2003	WtrDistBldg	Maint, MCB	SF	780
2004	RecGrds (Pier)	FacOps, MCAS	EA	1
2006	PlayingCourts	SpecServ, MCAS	EA	1

ENCLOSURE (1)

21 Nov 1985

<u>BLDG NO.</u>	<u>BLDG DESIGNATION</u>	<u>ASSIGNED TO</u>	<u>UNIT OF MEASUREMENT</u>	<u>AREA</u>
2008	StdbyGenBldg	Maint, MCB	SF	143
2011-2038, 2040, 2042, 2044-2046, 2048, 2050, 2052, 2054, 2056, 2058, 2060, 2062- 2067, 2069- 2072, 2073 2075, 2078, 2079, 2081- 2083, 2085- 2087, 2089- 2093, 2095- 2105, 2107- 2109, 2111, 2113-2115, 2117-2119,	PubQtrs WO/01-03	Housing, MCB	EA	85
2039, 2041 2043, 2047, 2055, 2057, 2059, 2061, 2068, 2072, 2074, 2076, 2077, 2080, 2084, 2088, 2094, 2106, 2110, 2112, 2116, 2120	PubQtrs 04/05	Housing, MCB	EA	22
2049, 2051 2053	PubQtrs 06	Housing, MCB	EA	3
2130 (SAS)	FootballField	SpecServ, MCAS	EA	1
2132 (SAS)	BaseballField	SpecServ, MCAS	EA	1
2133 (SAS)	BaseballField	SpecServ, MCAS	EA	1
2134	PFT Course	FacOps, MCAS	EA	1
2135	PublicToilet/Whse	SpecServ, MCAS	SF	336
2750	RecreationGrds	SpecServ, MCAS	EA	1
2800	RecPavilion	SpecServ, MCAS	SF	4,280
	Boathouse	SpecServ, MCAS	SF	2,400
2802	Bulkheads	SpecServ, MCAS	LF	340
2803	Marine/LargePier	SpecServ, MCAS	SF	31,360
2804	SmcftFuelSta	SpecServ, MCAS	GM	8
2805	Marine/SmallPier	SpecServ, MCAS	SF	1,410
2806	BoatRack	SpecServ, MCAS	EA	1
2807	FlamStgeBldg	SpecServ, MCAS	SF	100
2809	BoatRamp	SpecServ, MCAS	EA	1

YOUTH
ATHLETIC
FIELD

MARINA

ENCLOSURE (1)

21 Nov 1985

<u>BLDG NO.</u>	<u>BLDG DESIGNATION</u>	<u>ASSIGNED TO</u>	<u>UNIT OF MEASUREMENT</u>	<u>AREA</u>
2811 (SAS)	SunDock	SpecServ, MCAS	EA	1
2818	Bathouse/PubToilet	SpecServ, MCAS	SF	844
2850	RecreationGrnds	SpecServ, MCAS	EA	1
2851	PicnicShelter	SpecServ, MCAS	EA	1
2852	VolleyballCt	SpecServ, MCAS	EA	1
2860	PublicToilet	SpecServ, MCAS	SF	272
2861	SeptcTl/DnFld	Maint, MCB	GA	500
3000	TacanBldg	CommElec, MCAS	SF	441
3003	ExOrdBldg	MAG-29 EOD	SF	600
3502	SqdnHdqtrs	MAG-26 MABS-26	SF	9,914
3504	GroundElec	CommElec, MCAS	SF	2,443
3506	StorageBldg	CommElec, MCAS	SF	143
3509	VehWashPlatfm	CommElec, MCAS	SF	667
3515	ElecMaintShop	MWCS-28, Det "A"	SF	1,333
3523	Rod&GunClub	Serv, MCAS	SF	450
3525	GenStgA/G/Org	MAG-26 MCP	SF	17,482
3526 (SAS)	SewagePumpShed	Maint, MCB	SF	132
3529 (SAS)	Radio/WireShop	MWCS-28, Det "A"	SF	840
3530	GenStgA/G/Org	MWCS-28, Det "A"	SF	-100
3531	GenStgA/G/Org	MWCS-28, Det "A"	SF	230
3532	VehStgA	MWCS-28, Det "A"	SF	700
3533 (SAS)	VehWashPlatfm	CommElec, MCAS	EA	1
3534	BtryStge/MrcVeh	MAG-26 MABS-26	SF	2,000
3538	GeneratorBldg	Maint, MCB	SF	75
3601	PrecApproachRadar	AfldOps, MCAS	EA	1
3602	MeteorologicalFac	AfldOps, MCAS	EA	1
3604	MeteorologicalFac	AfldOps, MCAS	EA	1
3605	TransSta	Maint, MCB	KV	5
3606	MeteorologicalFac	AfldOps, MCAS	EA	1
3608	MeteorologicalFac	AfldOps, MCAS	EA	1
3613 (SAS)	OverflowTank	AfldOps, MCAS	EA	1
3614 (SAS)	FireTrngPit	AfldOps, MCAS	EA	1
3617	FireTrngPit	AfldOps, MCAS	EA	1
3620	AirNavigBldg	Maint, MCB	SF	876
4008	StorageShed	FacOps, MCAS	SF	80
4010	BEQ E1-E4	MAG-29	SF	26,452
	BEQ E1-E4	MAG-26 MABS-26/461/362	SF	52,906
4012	EM DiningFac	FacOps, MCAS	SF	9,056
4014 (SAS)	PlayingCourts	SpecServ, MCAS	EA	2
4015	BEQ E1-E4	MAG-26 HMM-264	SF	23,308
	BEQ E1-E4	MAG-29	SF	1,372
4020	BEQ E1-E4	MAG-26 H&MS-26/204/266	SF	69,012
4022 (SAS)	PlayingField	SpecServ, MCAS	EA	1
4025	BEQ E1-E4	MAG-29	SF	65,200
4030	BEQ E1-E4	MWSG-27, Det "A"	SF	23,688
	BEQ E1-E4	MATCS-28	SF	11,844
4031 (SAS)	TennisCourts	SpecServ, MCAS	EA	2
4032 (SAS)	BasketballCourt	SpecServ, MCAS	EA	1

ENCLOSURE (1)

21 Nov 1985

<u>BLDG NO.</u>	<u>BLDG DESIGNATION</u>	<u>ASSIGNED TO</u>	<u>UNIT OF MEASUREMENT</u>	<u>AREA</u>
4033 (SAS)	SoftballField	SpecServ, MCAS	EA	1
4034 (SAS)	SoftballField	SpecServ, MCAS	EA	1
4035	BEQ E1 - E5	H&HS, MCAS	SF	34,056
	BEQ E1 - E5	MAG-26 (HML/A-167)	SF	17,028
4036 (SAS)	Soccer/FtballField	SpecServ, MCAS	EA	1
4037 (SAS)	PicnicShelter	SpecServ, MCAS	SF	200
4038	EM Club E1 - E5	CCMS, MCAS	SF	17,589
4040	MarineCorpsExchange	MCX, MCB	SF	30,700
4099	StorageShed	MAG-29 (Supply)	SF	600
4100	MntceHang OH	MAG-29 HMH-464	SF	19,500
	MntceHang 01	MAG-29 HMH-464	SF	11,335
4101	AcftWashRack	MAG-26	SF	1,956
4102	WtrDistBldg	Maint, MCB	SF	240
4103	HazFlamSthse	MAG-29 HMH-464	SF	100
4104	AcftWashRack	MAG-29	SY	1,897
4105	WtrDistBldg	Maint, MCB	SF	255
4106	MntceHang OH	MAG-29 H&MS-29	SF	14,580
	Mt-Acft/SprStg	MAG-29 H&MS-29	SF	13,708
	EngineMntShop	MAG-29 H&MS-29	SF	9,029
	AirframesShop	MAG-29 H&MS-29	SF	8,711
	AvionicsShop	MAG-29 H&MS-29	SF	7,200
	MntceHang 02	MAG-29 H&MS-29	SF	5,332
	ParachuteShop	MAG-29 H&MS-29	SF	2,230
	A/G/SptWqpSh	MAG-29 H&MS-29	SF	2,048
	AvArmaShop	MAG-29 H&MS-29	SF	1,152
4108	MntceHang OH	MAG-29	SF	59,800
	MntceHang 01	MAG-29	SF	20,763
	MntceHang 02	MAG-29	SF	16,368
	A/G/SptEqpSh	MAG-29	SF	300
4109	Admin	MAG-29 HMA-269	SF	960
4110	GenWhse	MAG-29 SUPPLY	SF	30,088
4117	HazFlamSthse	MAG-29 VMO-1	SF	464
4118	HazFlamSthse	MAG-29 HMM-263	SF	1,680
4120	AcadInstrBldg	MAG-29	SF	14,822
4122	GroupHqtrs	MAG-29	SF	6,480
4123	Flagpole	MAG-29	EA	1
4124	HazFlamSthse	MAG-29 HMM-365	SF	100
4125	SewagePumpShed	Maint, MCB	SF	64
4126	LocationExchange	MCX, MCB	SF	3,000
4127	HazFlamSthse	MAG-29 SUPPLY	SF	100
4128	PrecisionMaintBldg	MAG-26	SF	600
4129 (SAS)	BaseballField	SpecServ, MCAS	EA	1
4130	StprTnk/WtrPot	Maint, MCB	SF	350,000
4131 (SAS)	HandballCourt	SpecServ, MCAS	EA	1
4132	LineMntShltr	MAG-29 VMO-1	SF	384
4137	HazFlamSthse	MAG-29 HMH-464	SF	100

ENCLOSURE (1)

21 Nov 1985

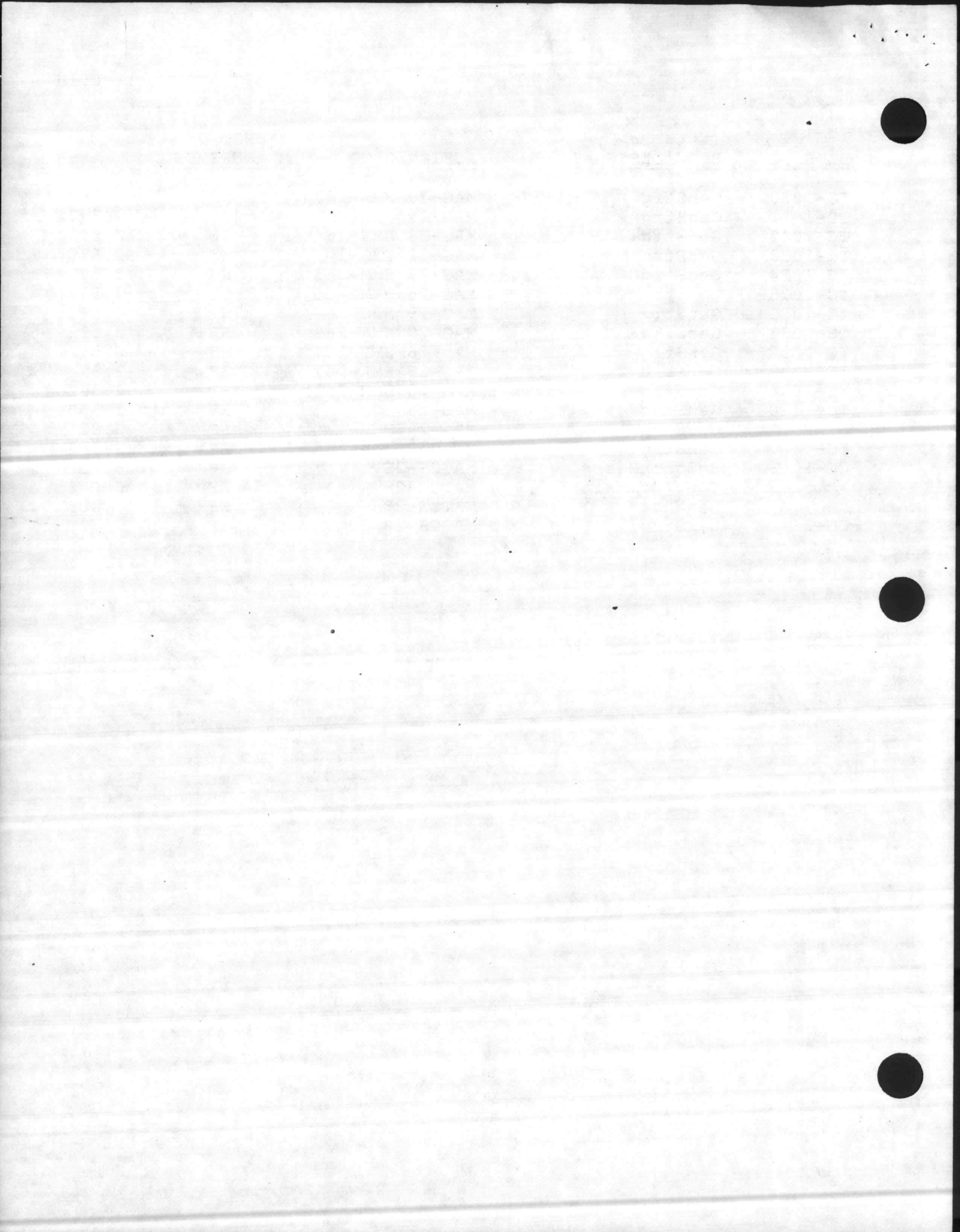
<u>BLDG NO.</u>	<u>BLDG DESIGNATION</u>	<u>ASSIGNED TO</u>	<u>UNIT OF MEASUREMENT</u>	<u>AREA</u>
4138	LineMntShltr	MAG-29 HMA-269	SF	360
4139	LineMntShltr	MAG-29	SF	360
4140	S/MaintsPmp/Fac	Maint, MCB	SF	144
4141	AvionicsShop	MAG-26 H&MS-26	SF	5,351
4142	LineMntShltr	MAG-29 HMA-269	SF	360
4143	EmerGenBldg	Maint, MCB	SF	143
4145	Armory	MAG-26	SF	2,000
	Armory	MAG-29	SF	1,656
	Armory	FacOps, MCAS	SF	3,366
4146	GroundSupportEquip	MAG-26 H&MS-26	SF	15,498
4147	G/SptEqpHld	MAG-26 H&MS-26	SF	12,342
4150	S/MaintsPmpFac	Maint, MCB	SF	144
4151	HeatingPlant	Maint, MCB	SF	9,487
4152	HeatFuelStrge	Maint, MCB	GA	100,000
4153	HeatFuelStrge	Maint, MCB	GA	100,000
4154	HeatFuelStrge	Maint, MCB	GA	100,000
4155	ShltrMiscPipe	Sup, MCAS	SF	187
4156	TK/TR/CR UN Fac	Sup, MCAS	OL	8
4157	SqdnHqtrs	MAG-29 (MABS-29)	SF	10,762
4158	ComVehMaint	MWSG-27, Det "A"	SF	27,200
4159	FuelsMaint	MWSG-27, Det "A"	SF	6,860
4160 (SAS)	InspRamp	MWSG-27, Det "A"	EA	1
4162 (SAS)	Ramp	MWSG-27, Det "A"	EA	1
4166 (SAS)	Ramp	MWSG-27, Det "A"	EA	1
5001	S/MaintsPmp/Fac	Maint, MCB	SF	144
5003	PublicToilet	MAG-29/MAG-26	SF	50
5004 (SAS)	OrdnanceBldg	MAG-29/MAG-26	EA	1
5009	S/MaintsPmp/Fac	Maint, MCB	SF	144
5012	GuardHouse	FacOps, MCAS	SF	24
5013	OrdnanceMagazine	FacOps, MCAS	SF	1,250
5014	OrdnanceMagazine	FacOps, MCAS	SF	1,250
5015	OrdnanceMagazine	FacOps, MCAS	SF	500
5016	OrdnanceMagazine	FacOps, MCAS	SF	140
5017	OrdnanceMagazine	FacOps, MCAS	SF	140
6001-6043	TR Hsg/Emergency	FacOps, MCAS	EA	43
6044	TR Hsg/Detached	FacOps, MCAS	SF	1,566
6045	Latrine	FacOps, MCAS	SF	1,566
6046-6056	TR Hsg/Detached	FacOps, MCAS	EA	11
TC-473	GenStrg	MAG-29 MABS-29	SF	8,000
TC-474	GenStrg	MAG-26	SF	8,000
TC-562	GenStrg	MAG-29 H&MS-29	SF	9,120
TC-569	GenStrg	MAG-29 MCP	SF	8,000
TC-572	GenStrg	MAG-26 HMM266/HMH461	SF	8,000
TC-760	GenStrg	MAG-29 MCP	SF	9,120
TC-761	GenStrg	MAG-26 H&MS-26	SF	9,120
TC-762	GenStrg	MAG-26 HMM264/HMH362	SF	9,120
TC-940	GenStrg	MAG-29 MCPProp	SF	9,120

ENCLOSURE (1)

21 Nov 1985

<u>BLDG NO.</u>	<u>BLDG DESIGNATION</u>	<u>ASSIGNED TO</u>	<u>UNIT OF MEASUREMENT</u>	<u>AREA</u>
TC-1020	GenStrg	MAG-29 HMM-162	SF	2,592
TC-1021	GenStrg	MAG-29	SF	2,592
TC-1022	GenStrg	MAG-29 HMM-464	SF	2,592
TC-1023	GenStrg	MAG-29 VMO-1	SF	2,592
TC-1024	GenStrg	MAG-29 HMM-263	SF	2,592
TC-1025	GenStrg	MAG-26 H&MS-26	SF	2,592
TC-1030	GenStrg	MAG-29 NBC	SF	2,592
TC-1031	GenStrg	MAG-29 HMA-269	SF	2,592
TC-1032	GenStrg	MAG-26 HML-167	SF	2,592
TC-1033	GenStrg	MAG-26 HML-167	SF	2,592
TC-1034	GenStrg	MAG-26 (HMM-261)	SF	2,592
TC-1110	GenStrg	MAG-26 MCP	SF	1,500
	GenStrg	MAG-29 MCP	SF	2,821
TC-1120	GenStrg	MWSG-27, Det "A"	SF	2,592
CG-1	BnSqdrnHqtrs	MATCS-28	SF	6,017
	Elec/ComMaintSh	MATCS-28	SF	3,008
	GenWhse	MATCS-28	SF	3,009
CG-28	GenStrg	MATCS-28	SF	720

ENCLOSURE (1)



21 Nov 1985

FORMAT FOR
REQUESTING BUILDING OR STRUCTURE ASSIGNMENT,
REASSIGNMENT, AND/OR DISPOSITION

(HEADING)

From:

To: Commanding Officer, Marine Corps Air Station,
New River (Attn: Facilities Officer)

Subj: Building No. _____; request for assignment/reassignment/disposition of

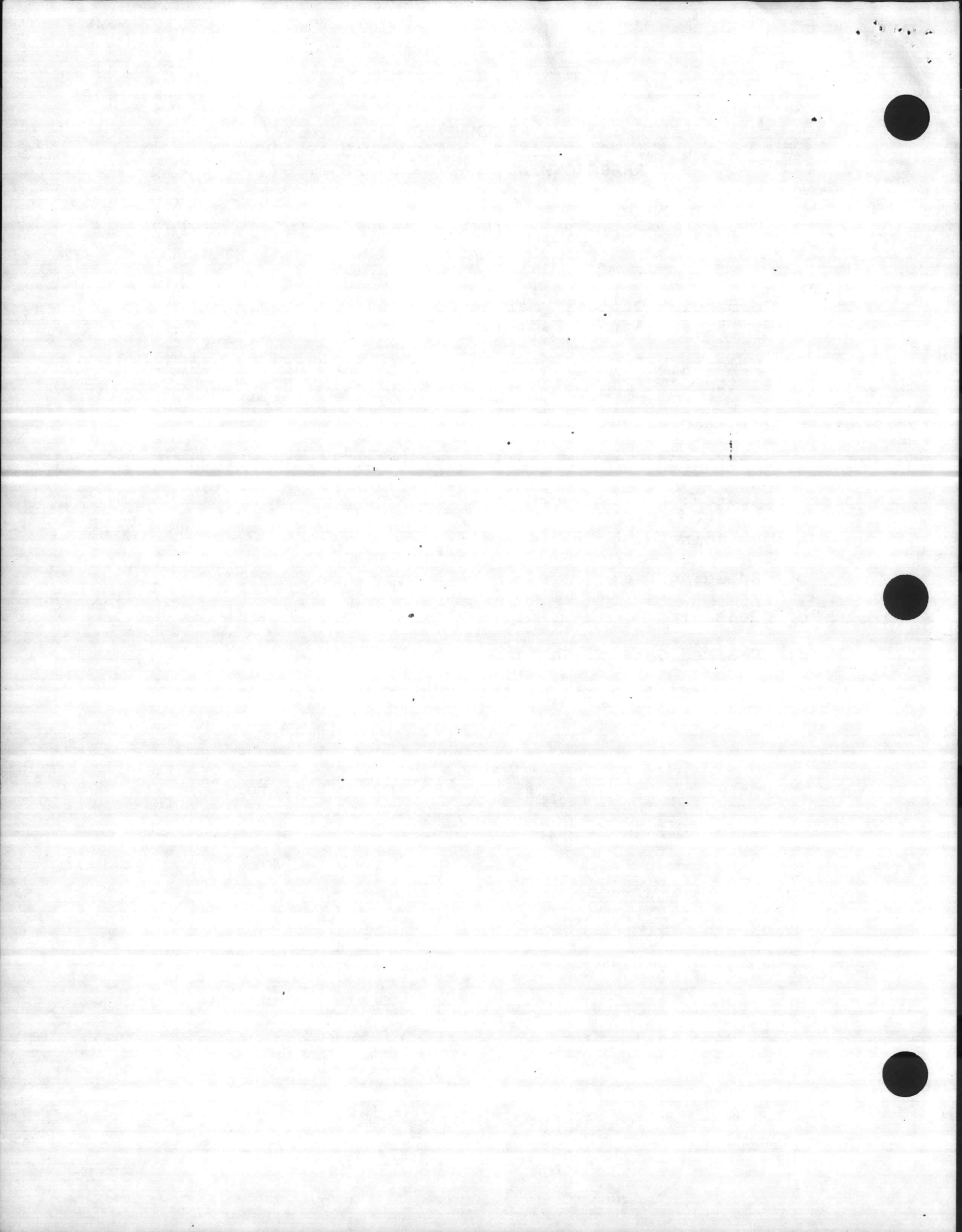
Ref: (a) ASO 11100.1

1. In accordance with the reference, it is requested that the following building be assigned/reassigned/disposed of for the purpose indicated:

- a. Building Number:
- b. Building Use:
- c. Reason:
- d. Desired Date of Change:
- e. Any modifications needed to make facility complete:

Signature

ENCLOSURE (2)



21 Nov 1985

FORMAT FOR
REQUESTING BUILDING RELOCATION OR ERECTION

(HEADING)

From:

To: Commanding Officer, Marine Corps Air Station,
New River (Attn: Facilities Officer)

Via:

Subj: Building or Structure No. _____; request for relocation

Ref: (a) ASO 11100.1

1. In accordance with the reference, it is requested that the subject building be relocated as follows:

a. Building Number:

b. Building Use:

c. Desired Site:

d. Justification for Relocation:

e. Desired Date of Occupancy:

f. Work to be performed by _____ at an approximate cost to the government of \$ _____.

Signature

ENCLOSURE (3)

