

Your New Health Care System

**Patient Protection & Affordable Care Act, P.L. 111-148;
Health Care & Education Reconciliation Act, P.L. 111-152**

PRESS PACKET

*Prepared by: Joint Economic Committee, Republican Staff
Congressman Kevin Brady, Senior House Republican
Senator Sam Brownback, Ranking Member*

Your New Health Care System

SUMMARY EXPLANATION

GENERAL

Everything in **COLOR** is newly added by the bill, except for the HHS Secretary, who is essentially the new health czar

Everything in **WHITE** (cream) existed previously

Everything in **WHITE with an OUTLINE** has been expanded or changed

- **RED OUTLINES** on white shapes are expanded government
- **GREEN OUTLINES** on white shapes are financial government entities
- **BLUE OUTLINES** on white shapes are changed private entities
- **NO OUTLINE** on a white shape is an unchanged entity (there is only one)

COLORED SHAPES: ALL NEW GOVERNMENT

ORANGE CIRCLES indicate new potential for the government to ration care

LIGHT BLUE CIRCLES are new government involvement in the health insurance market

GREEN DIAMONDS are taxes, fees, penalties, and cuts

YELLOW HEXAGONS are specific mandates

DARK BLUE CIRCLES are other expansions of government

DARK BLUE DIAMONDS are new government trust funds or monetary benefits, including subsidies and health insurance related tax credits

TRI-COLOR SHAPES (Dark Blue, Green, & Red) are bundles representing a number of additional entities

LINES: NEW RELATIONSHIPS

RED LINES are for new regulations, mandates, and requirements

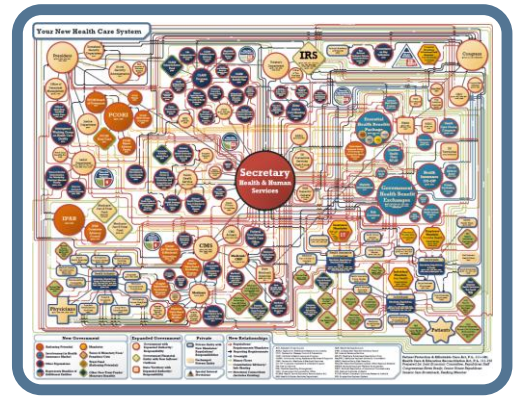
BLACK LINES are for new reporting requirements

BLUE LINES are for new oversight authority

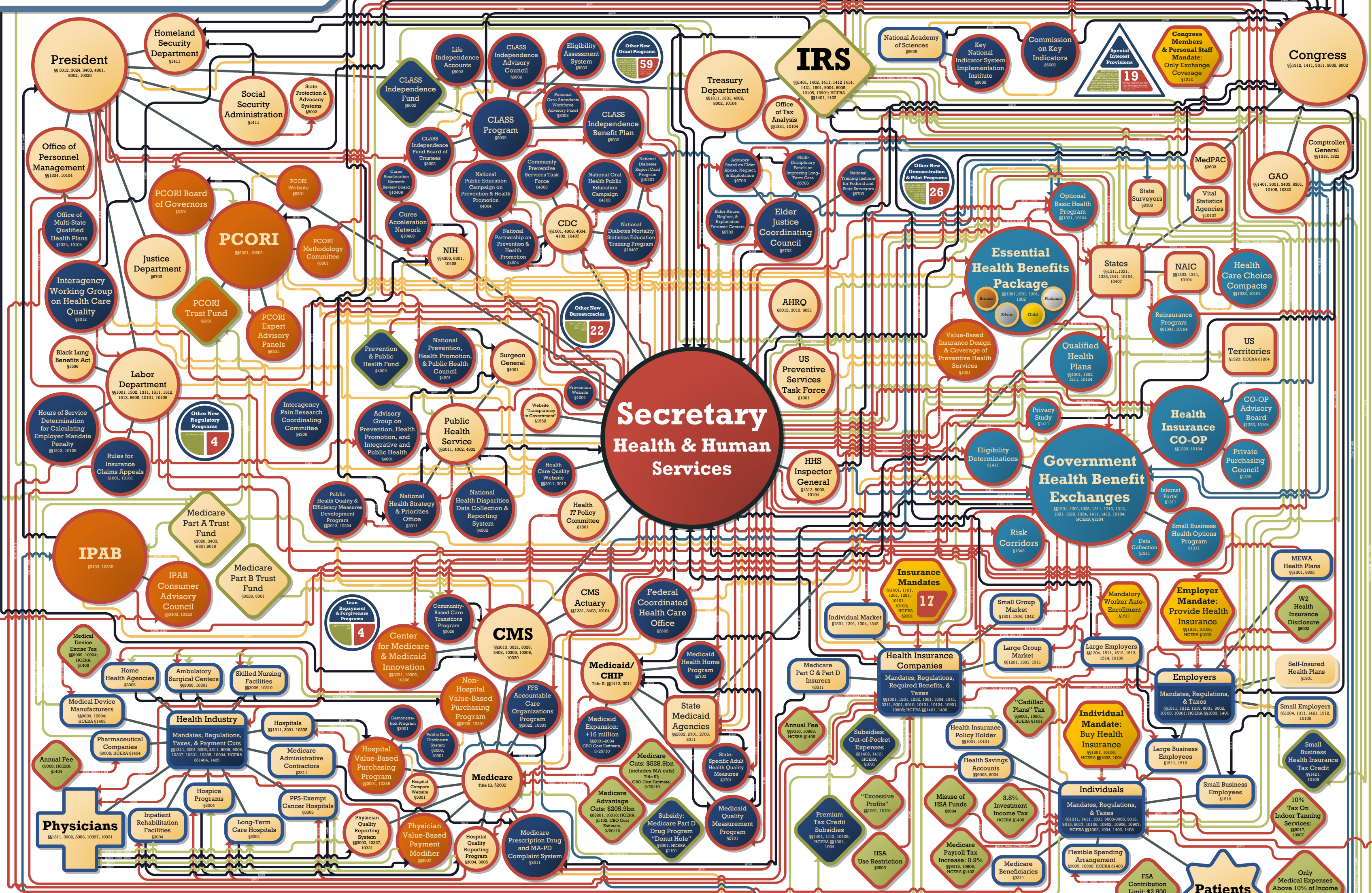
GREEN LINES are for new money flows

YELLOW LINES are for new consultation, advisory, and/or information sharing relationships

GRAY LINES indicate structural connections, including existing connections



Your New Health Care System



<p>New Government</p> <ul style="list-style-type: none"> ● Rationing Potential ● Involvement in Health Insurance Market ● Other Expansions ● Represents Bundles of Additional Entities 	<p>Expanded Government</p> <ul style="list-style-type: none"> ● Government with Expanded Authority/Responsibility ● Government Financial Entity with New Inflows/Outflows ● State/Territory with Expanded Authority/Responsibility 	<p>Private</p> <ul style="list-style-type: none"> ● Private Entity with New Mandates/Regulations/Responsibilities ● Unchanged Private Entity ● Special Interest Provisions 	<p>New Relationships</p> <ul style="list-style-type: none"> → Regulations/Requirements/Mandates → Reporting Requirements → Oversight → Money Flows → Consultation/Advisory/Info Sharing → Structural Connections (Includes Existing) 	<p>Legend</p> <ul style="list-style-type: none"> AGI: Adjusted Gross Income AHRO: Agency for Healthcare Research and Quality CDC: Centers for Disease Control and Prevention CHIP: Children's Health Insurance Program CLASS: Community Living Assistance Services & Supports CMS: Centers for Medicare & Medicaid Services CO-OP: Consumer Operated & Oriented Program FFS: Fee-for-Service FSA: Flexible Spending Arrangement GAO: Government Accountability Office HCERA: Health Care & Education Reconciliation Act HHS: Health & Human Services Department HSA: Health Savings Account IPAB: Independent Payment Advisory Board IRS: Internal Revenue Service MA-PD: Medicare Advantage Prescription Drug MedPAC: Medicare Payment Advisory Commission MERD: Medical Early Risk Detection EALORS: Executive Auxiliary Linked Office Regional Systems MEWA: Multiple Employer Welfare Arrangement NAIC: National Association of Insurance Commissioners NIH: National Institutes of Health PCORI: Patient-Centered Outcomes Research Institute PPS: Prospective Payment System
---	---	--	--	---

Patient Protection & Affordable Care Act, P.L. 111-148; Health Care & Education Reconciliation Act, P.L. 111-152
 Prepared by: Joint Economic Committee, Republican Staff
 Congressman Kevin Brady, Senior House Republican
 Senator Sam Brownback, Ranking Member