



MO 252 #1 (Macondo):

TD Forward Plan Review: Production Casing & TA options

Key topics:



- PP/FG status
- Open Hole overview
- Decision to set Liner vs. Long String for “Keeper” well objective

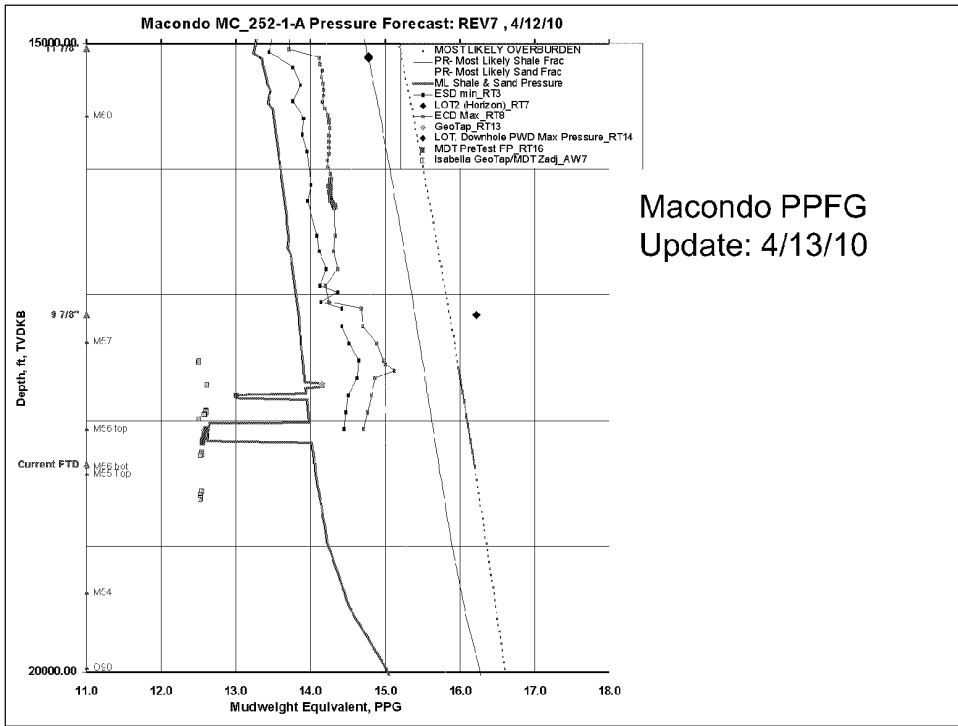
Geology

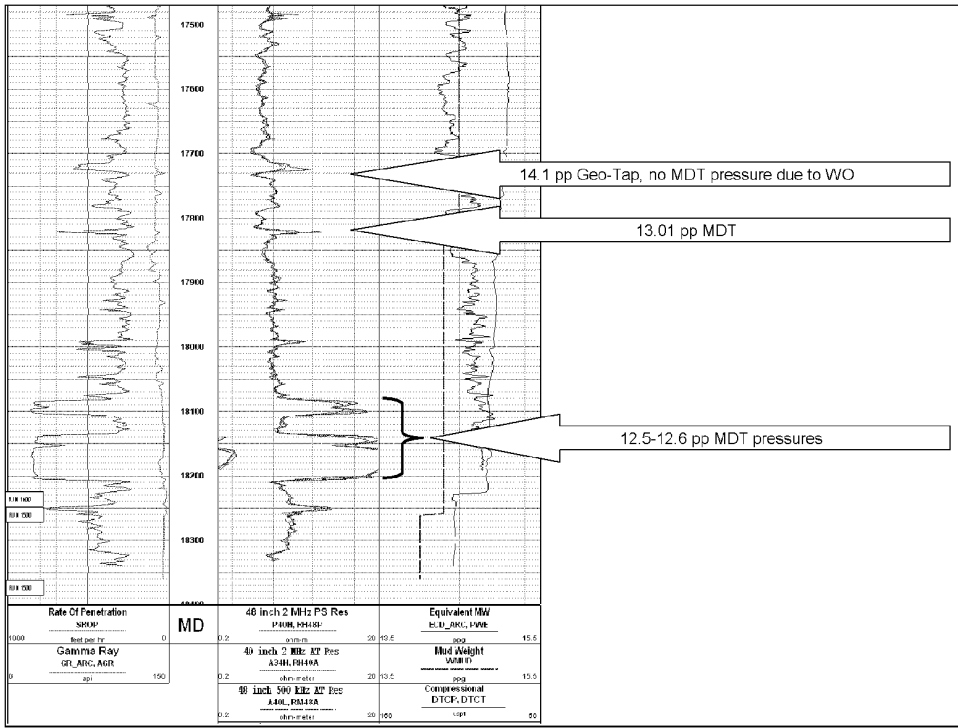


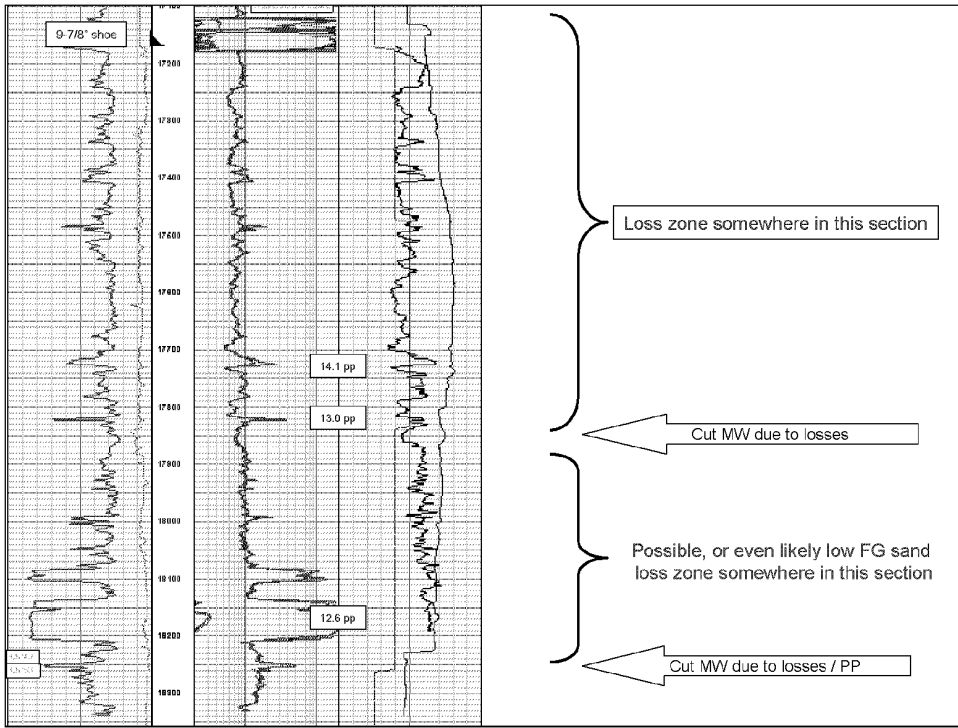
- Primary objective is hydrocarbon bearing.
- Logging program ongoing, 4 of 6 runs complete.
- Run 5: RSWC tool has failed, and we are POOH to replace motor.

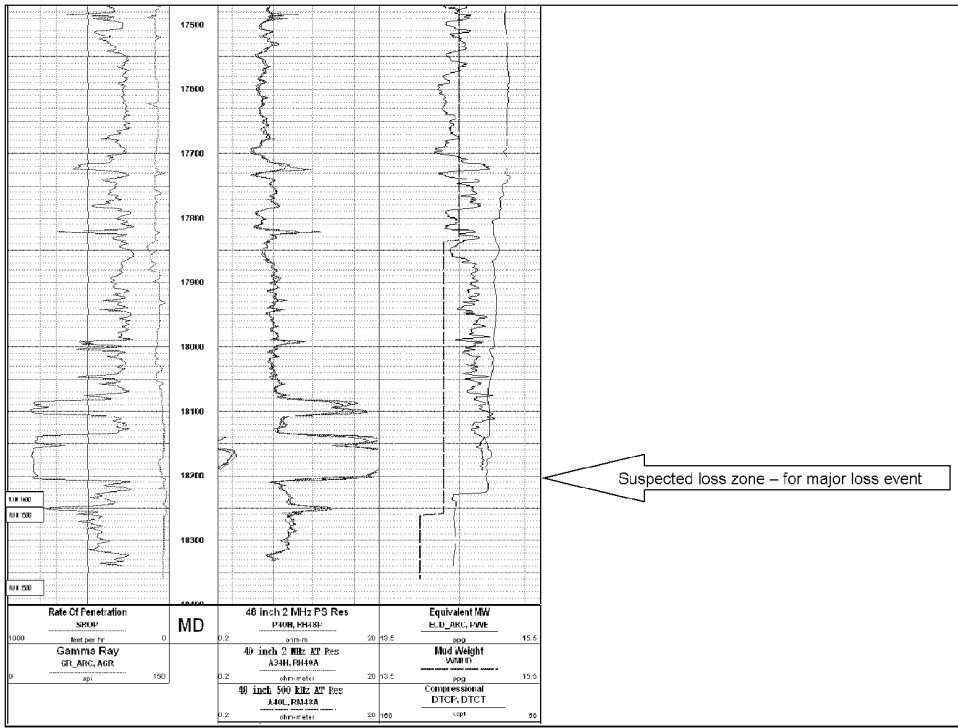
PPFG... as we think we know it now...











Suspected loss zone - for major loss event

"Keeper Well" options:



- Long string of 9-7/8" x 7" casing was the primary option...
 - Cement simulations indicate it is unlikely to be a successful cement job due to formation breakdown.
 - Unable to fulfill MMS regulations of 500' of cement above top HC zone (thought to be 17,803')
 - Open annulus to wellhead, with HC zone(s) open to 9-7/8" seal assembly as only barrier.
 - Potential need to verify with bond log, and perform remedial cement job(s) prior to TA. Or obtain a BP Dispensation.

"Keeper Well" options:



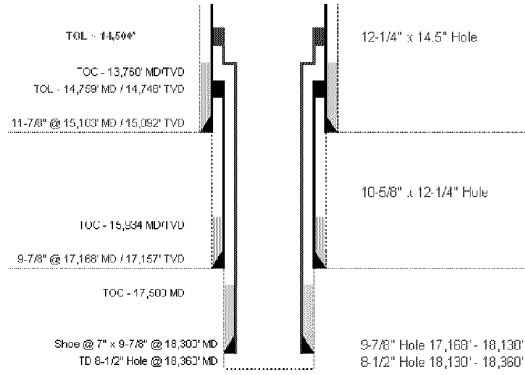
- 7" Liner (with 7" x 9-7/8" XO x 11-7/8" Versaflex hanger) is now the recommended option...
 - ... Less issue with landing it shallow (we can also ream it down)
 - ... Liner hanger acts as second barrier for HC in annulus
 - ... Primary cement job has slightly higher chance for successful cement lift due to lower ECD.
 - ... Remedial cement job, if required, easier to justify to be left for later.

"Keeper Well" options:



- Plug open hole and TA well
 - ... Minimize cost forward and NPT
 - ... Increases options for completion
 - ... Pipe size, SCSSV size

Wellbore Diagram

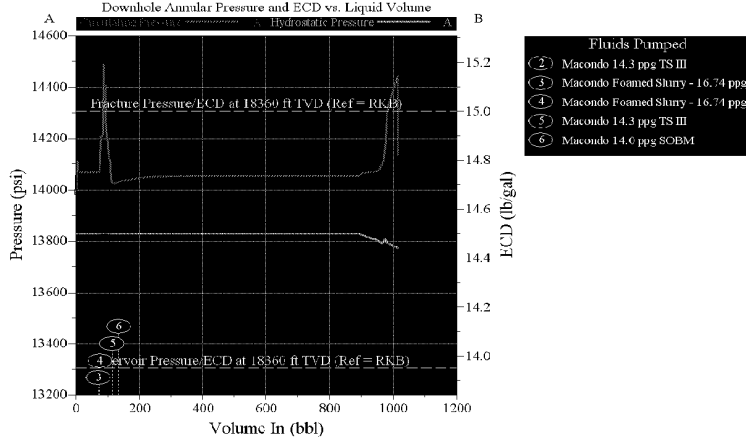


9 7/8" X 7" Prod Casing



OptiCem

Circulating Pressure and Density at Fracture Zone



9 7/8" X 7" Liner



OptiCem

Circulating Pressure and Density at Fracture Zone

