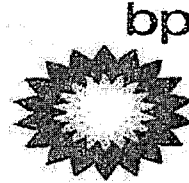




DEEPWATER HORIZON



BOP Subsea Test

Operator BP

Well Num. MC 252 Maconda #1

Date 02-10-10

Pod Used Blue

Panel Used

DCP

	Time	Gallons		Low Press	High Press
6-5/8" DP			close		
Down Kill Line					
Test 1 SEE EXPLANATION SHEET.					
Lower Annular & Inner Bleed	25	46.5	close	250 psi	3,950 psi
	20	44.5	open	5 min.	5 min.
Test 2					
Upper Annular & Outer Bleed	25	47.1	close	260 psi	5,200 psi
Kelly Hose & Standpipe V/V #11	21	42.4	open	5 min.	5 min.
Test 3 SEE EXPLANATION SHEET.					
Middle Pipe Rams, & Manifold Valve # 4	16	23.7	close	250 psi	7,150 psi
(2) 65/8" TIW				5 min.	5 min.
Test 4					
Middle Pipe Rams & Manifold Valve # 9	15	20.5	open	250 psi	7,100 psi
(1) Gray Valve				5 min.	5 min.
Test 5					
Upper Pipe Rams, UIC, LIC	16	23.6	close	270 psi	7,100 psi
Auto IBOP				5 min.	5 min.
Test 6					
Upper Pipe Rams, UOC, LOC	15	20.2	open	280 psi	7,150 psi
				5 min.	5 min.
6-5/8" DP			open		
Down Choke Line			close		
Test 7 SEE EXPLANATION SHEET.					
Lower Annular & UIK	26	46.7	close	270 psi	3,750 psi
	24	43.9	open	5 min.	5 min.
Test 8					
Upper Annular & UOK	26	47.7	close	270 psi	3,700 psi
	23	41.6	open	5 min.	5 min.
Test 9					
Middle Pipe Rams & LIK	16	22.4	close	250 psi	6,800 psi
				5 min.	5 min.
Test 10					
Middle Pipe Rams & LOK	15	20.7	open	260 psi	6,750 psi
				5 min.	5 min.
Test 11					
Upper Pipe Rams & Manifold Valve #1	16	24.1	close	250 psi	6,700 psi
				5 min.	5 min.
Test 12					
Upper Pipe Rams & Manifold Valve #6	15	19.9	open	250 psi	6,800 psi
				5 min.	5 min.
			open		

Subsea Engineer

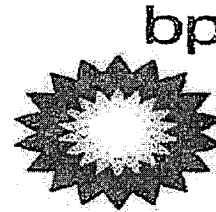
Operator

Toolpusher

OIM



DEEPWATER HORIZON



SURFACE EQUIPMENT

Operator BP Well Number MC 252 Maconda #1 Date 2/10/2010

ENSURE ALL CHOKES ARE OPEN BEFORE TESTING MANIFOLD

CHOKES MANIFOLD

Test 1

Valves tested # 2

Low press		Hi press	Time
270	5	7,200	5

Test 2

Valves tested # 5 & 7

250	5	7,150	5
-----	---	-------	---

Test 3

Valves tested # 3, 6, 8, 11, 12, 15, 16, & 19

280	5	7,000	5
-----	---	-------	---

Test 4*

Valves tested # 1, 9, 10, 13, 17, 20, 23, & 24

250	5	6,900	5
-----	---	-------	---

Test 5

Valves tested # 4, 21, & 25

270	5	7,150	5
-----	---	-------	---

Test 6 DO NOT EXCEED 5000 PSI

Valves tested # 27, 28, 29, & 30

270	5	5,800	5
-----	---	-------	---

Test 7 DO NOT EXCEED 5000 PSI

Valves tested # 31, 32, & 35

280	5	5,600	5
-----	---	-------	---

Test 8 DO NOT EXCEED 5000 PSI

Valves tested # 31, 33, 34, & 39

250	5	5,500	5
-----	---	-------	---

Test 9 DO NOT EXCEED 5000 PSI

Valves tested # 36, 37, 38, & 40

250	5	5,500	5
-----	---	-------	---

Subsea Engineer

[Redacted]

Operator

[Redacted]

Toolpusher

[Redacted]

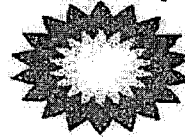
OIM

[Redacted]



DEEPWATER HORIZON

POD FUNCTION TEST



Operator: BP Well Number: MC 252 Maconda #1 Date: 2/10/2010

Panel: TCP

Pod: Yellow

Upper Annular Close	Gallons	46.9	26
Upper Annular Open	Gallons	43.5	25
Lower Annular Close	Gallons	50.2	27
Lower Annular Open	Gallons	41.6	25
Blind Shear Rams Close	Gallons		
Blind Shear Rams Open	Gallons		
Casing Shear Rams Close	Gallons	DO NOT FUNCTION AS PER EXEMPTION	
Casing Shear Rams Open	Gallons	DO NOT FUNCTION AS PER EXEMPTION	
Upper Pipe Rams Close	Gallons	24.3	16
Upper Pipe Rams Open	Gallons	20.3	15
Middle Pipe Rams Close	Gallons	23.3	16
Middle Pipe Rams Open	Gallons	20.7	15
Lower Test Rams Close	Gallons	24.3	17
Lower Test Rams Open	Gallons	20.4	15
Inner Bleed Valve Open	Gallons	0.8	8
Inner Bleed Valve Close	Gallons	0.8	8
Outer Bleed Valve Open	Gallons	0.8	8
Outer Bleed Valve Close	Gallons	0.8	7
Upper Inner Choke Open	Gallons	0.7	7
Upper Inner Choke Close	Gallons	0.7	7
Upper Outer Choke Open	Gallons	0.8	8
Upper Outer Choke Close	Gallons	0.8	8
Lower Inner Choke Open	Gallons	0.8	6
Lower Inner Choke Close	Gallons	0.8	6
Lower Outer Choke Open	Gallons	0.8	6
Lower Outer Choke Close	Gallons	0.8	8
Upper Inner Kill Open	Gallons	0.8	7
Upper Inner Kill Close	Gallons	0.7	7
Upper Outer Kill Open	Gallons	0.8	7
Upper Outer Kill Close	Gallons	0.8	7
Lower Inner Kill Open	Gallons	0.8	6
Lower Inner Kill Close	Gallons	0.8	8
Lower Outer Kill Open	Gallons	0.8	8
Lower Outer Kill Close	Gallons	0.7	8
Mud Boost Valve Open	Gallons	0.2	3
Mud Boost Valve Close	Gallons	0.2	3

Subsea Engineer

Operator

Toolpusher

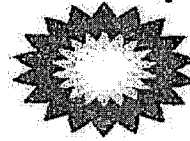
OIM

Remarks: Functioned Diverter and related valves at 02:56.



DEEPWATER HORIZON

POD FUNCTION TEST



Operator: BP

Well Number: MC 252 Macondo #1

Date: 2/11/2010

Panel: TCP

Pod: Yellow

Upper Annular Close	Gallons		
Upper Annular Open	Gallons		
Lower Annular Close	Gallons		
Lower Annular Open	Gallons		
Blind Shear Rams Close	Gallons	24	16
Blind Shear Rams Open	Gallons	21.2	15
Casing Shear Rams Close	Gallons		
Casing Shear Rams Open	Gallons		
Upper Pipe Rams Close	Gallons		
Upper Pipe Rams Open	Gallons		
Middle Pipe Rams Close	Gallons		
Middle Pipe Rams Open	Gallons		
Lower Test Rams Close	Gallons		
Lower Test Rams Open	Gallons		
Inner Bleed Valve Open	Gallons		
Inner Bleed Valve Close	Gallons		
Outer Bleed Valve Open	Gallons		
Outer Bleed Valve Close	Gallons		
Upper Inner Choke Open	Gallons		
Upper Inner Choke Close	Gallons		
Upper Outer Choke Open	Gallons		
Upper Outer Choke Close	Gallons		
Lower Inner Choke Open	Gallons		
Lower Inner Choke Close	Gallons		
Lower Outer Choke Open	Gallons		
Lower Outer Choke Close	Gallons		
Upper Inner Kill Open	Gallons		
Upper Inner Kill Close	Gallons		
Upper Outer Kill Open	Gallons		
Upper Outer Kill Close	Gallons		
Lower Inner Kill Open	Gallons		
Lower Inner Kill Close	Gallons		
Lower Outer Kill Open	Gallons		
Lower Outer Kill Close	Gallons		
Mud Boost Valve Open	Gallons		
Mud Boost Valve Close	Gallons		

Subsea Engineer

Operator

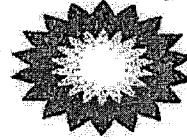
Toolpusher

OIM



DEEPWATER HORIZON

bp



Explanation Sheet

Operator BP Well Num. MC 252 Mancondo #1 Date 2/10/2010

BOP

1. Pressure bled off due to Test Rams not being closed. Restarted test and had no issues throughout the rest of the test.

CHOKE MANIFOLD

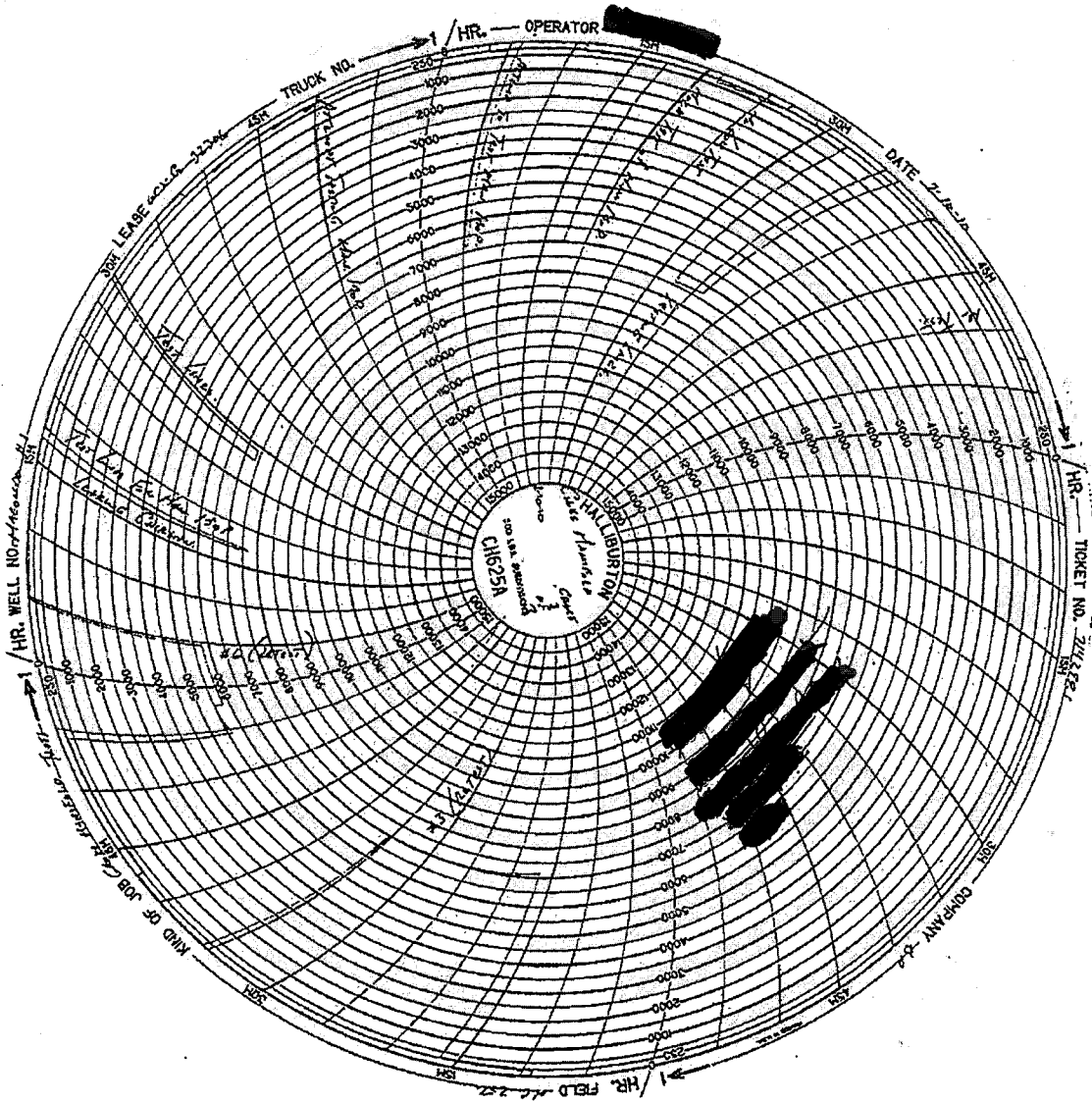
1. Test #3 bled off. Serviced valves and retested. Good.
2. Test #6 bled off. Serviced valves and retested. Good.
3. Test #8 bled off. Serviced valves and retested. Good.

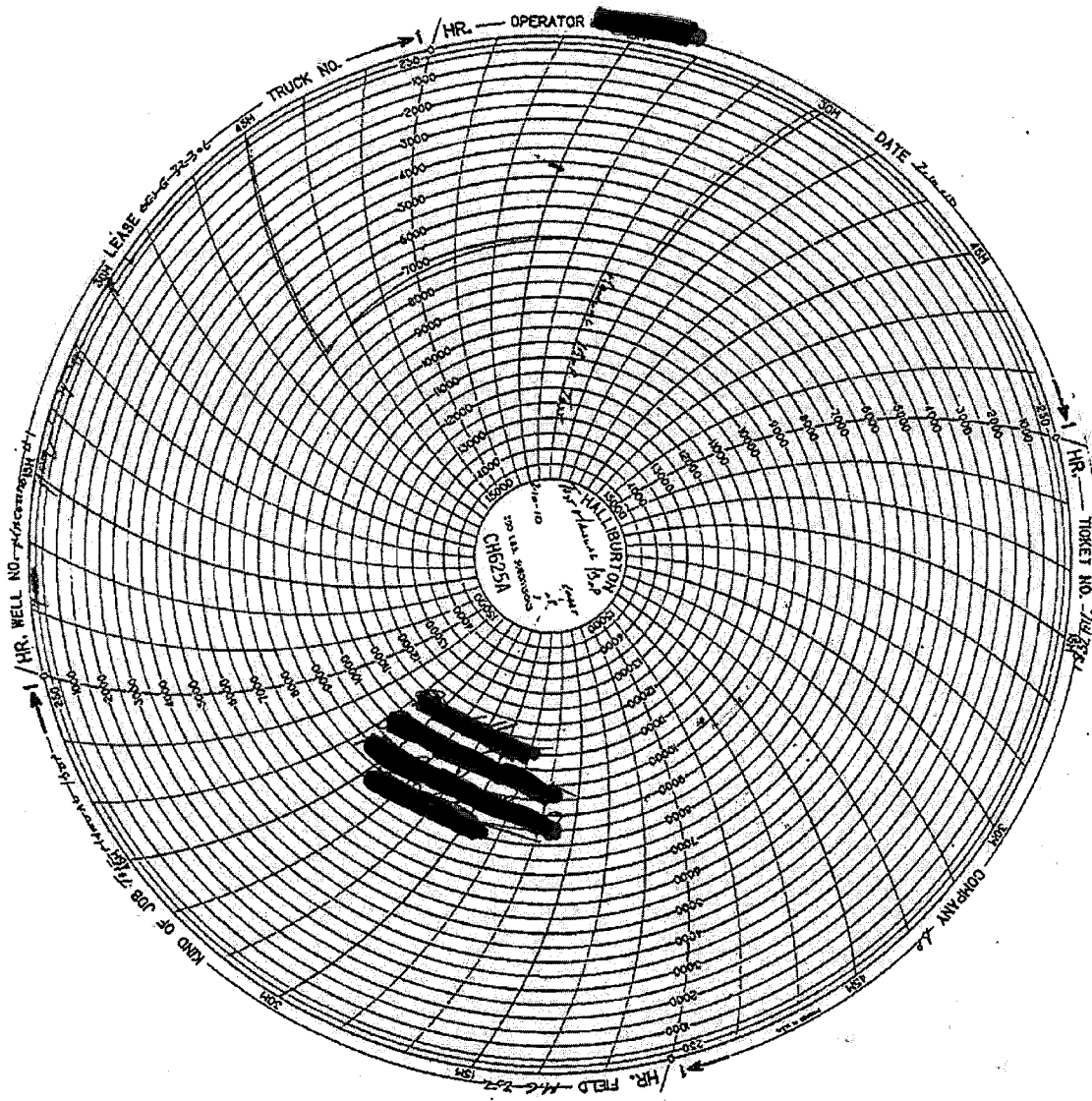
Subsea Engineer

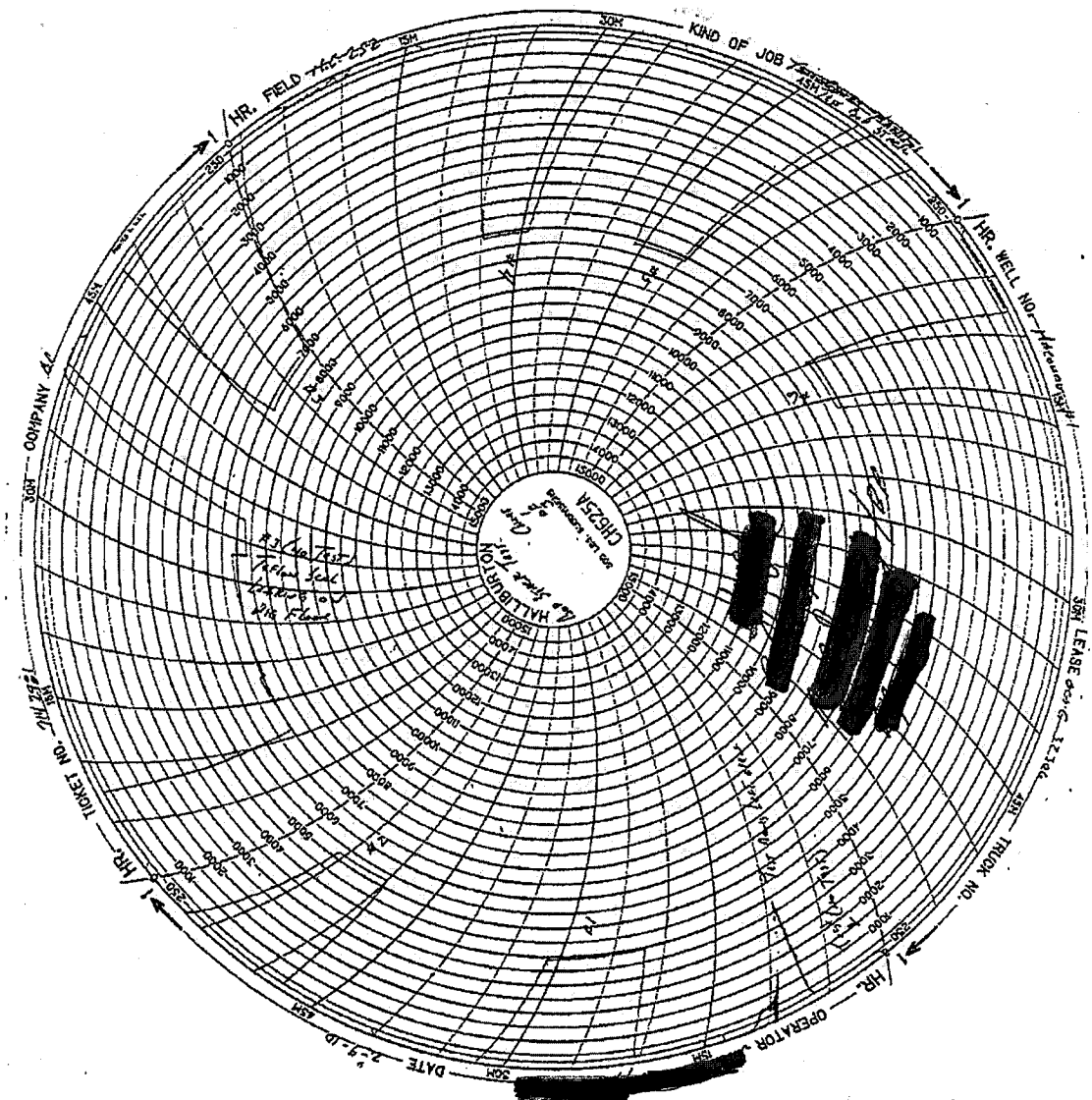
Operator

Toolpusher

OIM







COMPANY

HR. FIELD

KIND OF JOB

HR. WELL NO.

LEASE

TRUCK NO.

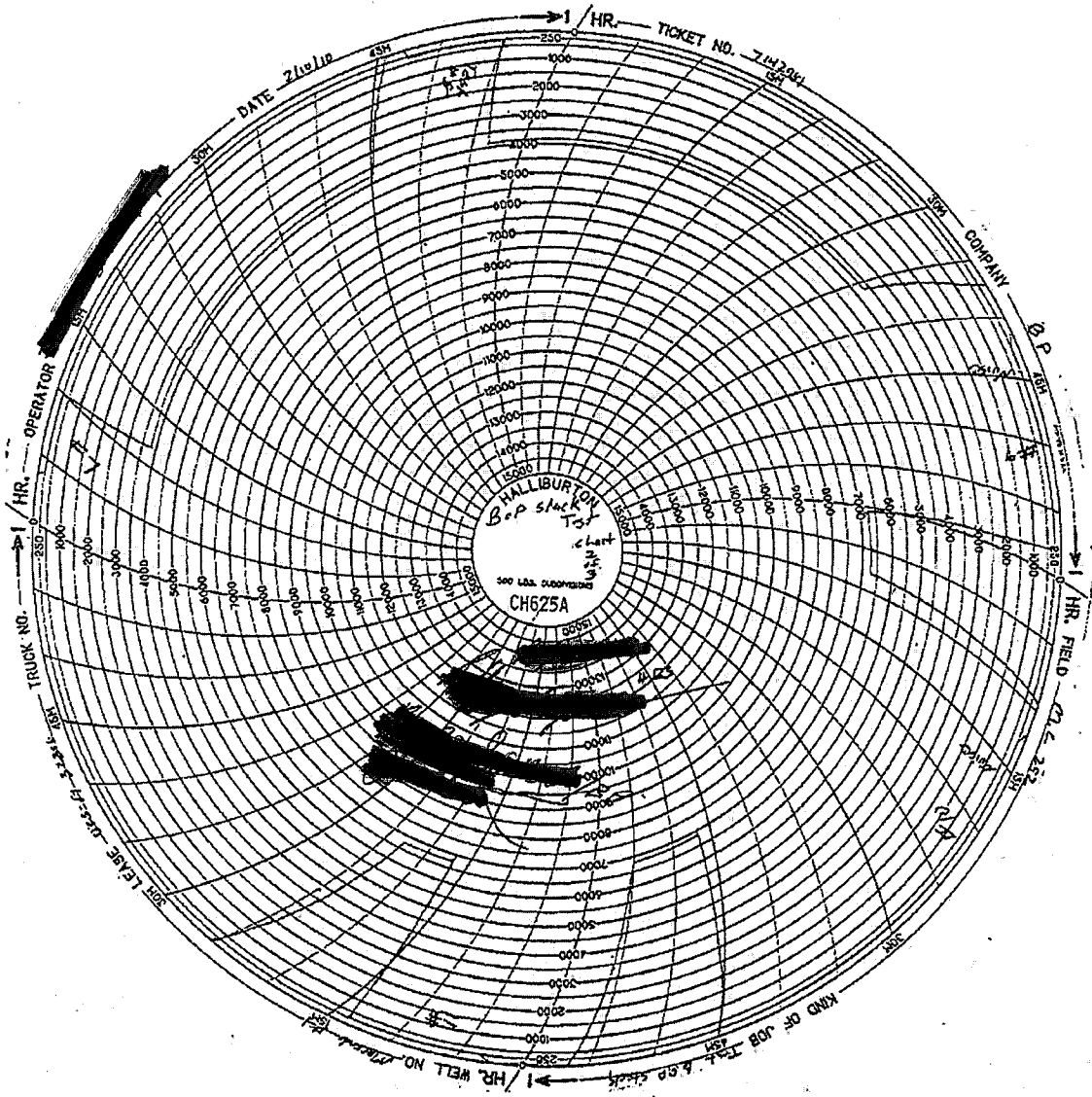
OPERATOR

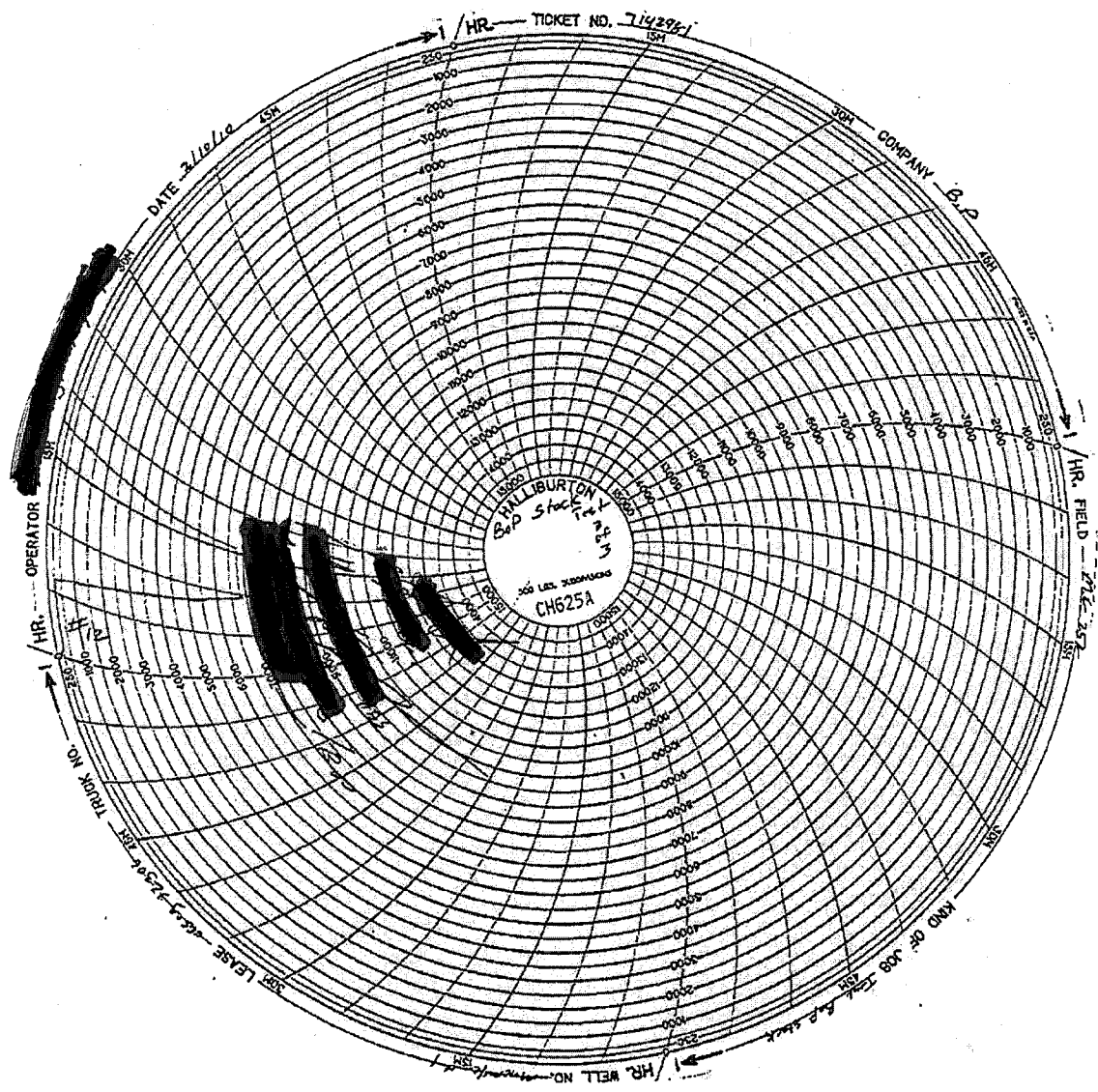
DATE

TICKET NO.

HALLIBURTON
CIGUSA







TICKET NO. 714281

DATE 2/10/12

COMPANY B.P.

GALLIBURTON
Bad Stock
CH625A

HR. FIELD 272-287

HR. OPERATOR

HR.

TRUCK NO.

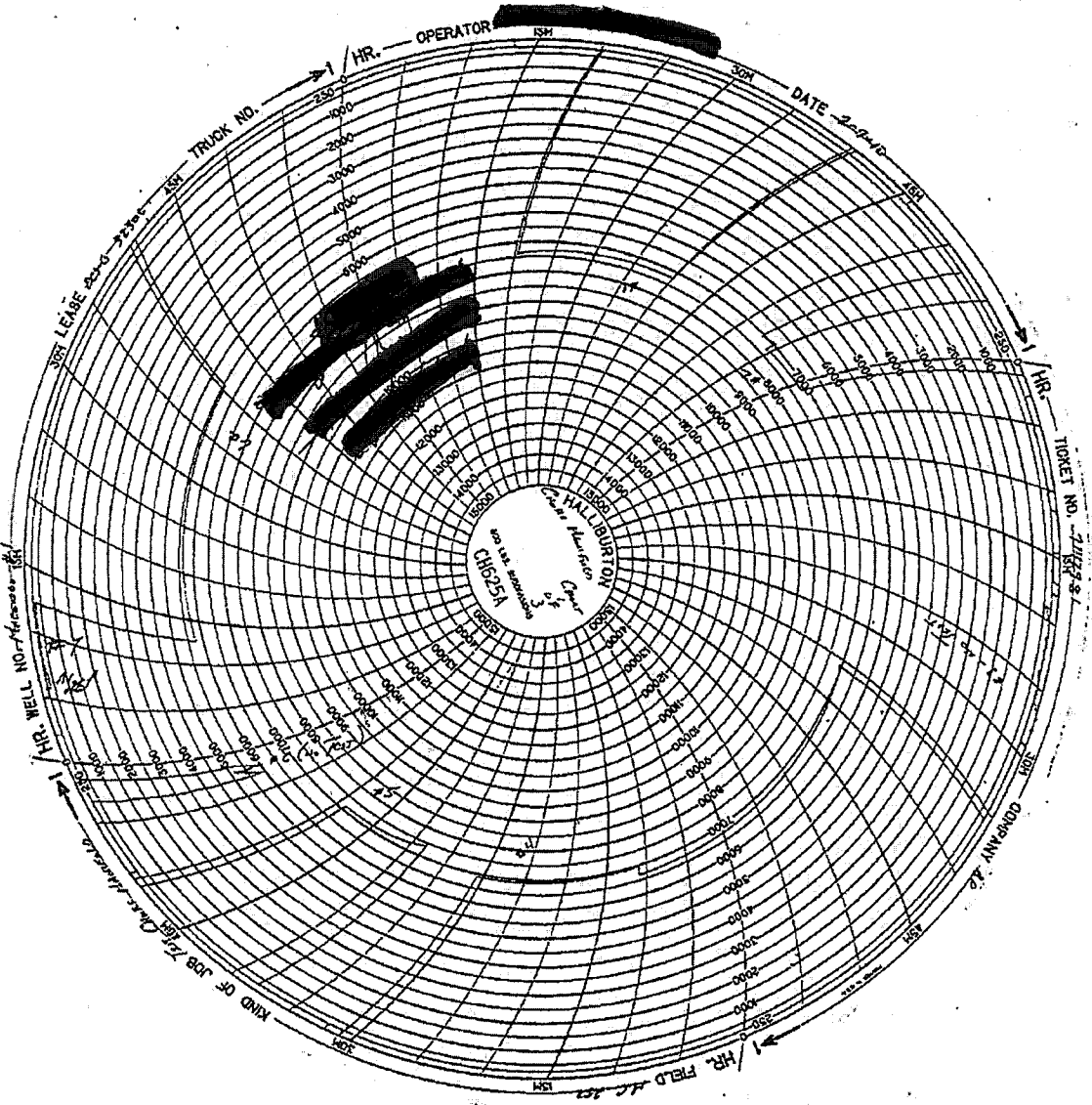
HR. LEASE 443-723-4-287

HR. WELL NO.

KIND OR JOB TEST

[REDACTED]

[REDACTED]



HR. OPERATOR [REDACTED]

DATE 2-22-40

TRUCK NO. [REDACTED]

HR. TICKET NO. 2163

HR. WELL NO. 115

KIND OF JOB [REDACTED]

HR. FIELD [REDACTED]

COMPANY [REDACTED]

