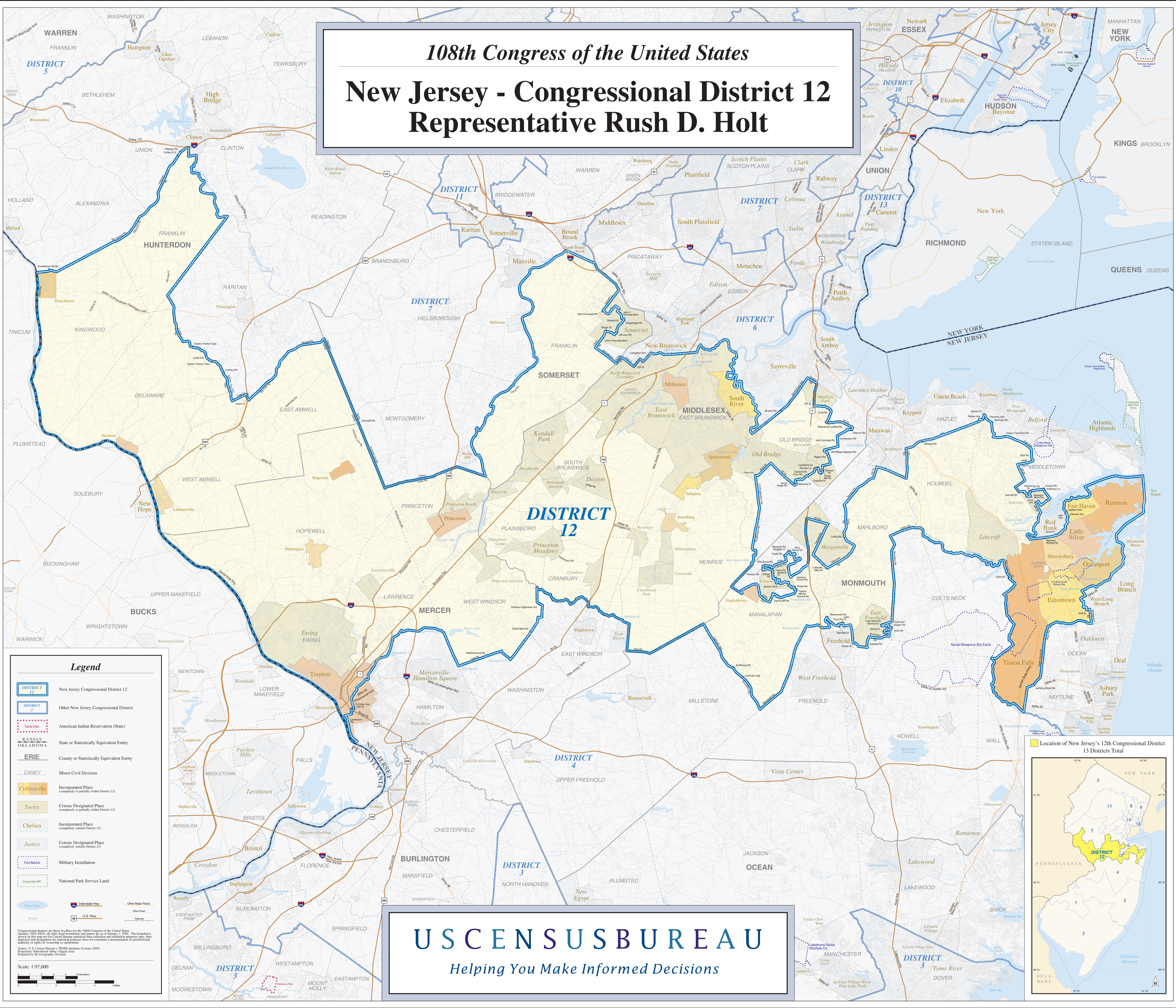


108th Congress of the United States
New Jersey - Congressional District 12
Representative Rush D. Holt



Legend

- DISTRICT 12** New Jersey Congressional District 12
- DISTRICT 2** Other New Jersey Congressional District
- Tama Ho** American Indian Reservation (State)
- KANSAS OKLAHOMA** State or Statistically Equivalent Entity
- ERIE** County or Statistically Equivalent Entity
- CANEY** Minor Civil Division
- Collinsville** Incorporated Place (completely or partially within District 12)
- Turley** Census Designated Place (completely or partially within District 12)
- Chelsea** Incorporated Place (completely outside District 12)
- Justice** Census Designated Place (completely outside District 12)
- Fort Belvoir** Military Installation
- Yosemite NP** National Park Service Land
- Water Body** Water Body
- Interstate Hwy** Interstate Hwy
- U.S. Hwy** U.S. Hwy
- Other Major Road** Other Major Road
- Other Road** Other Road
- Highway** Highway

Congressional districts are those in effect for the 108th Congress of the United States (January 2005-2007). All other legal boundaries are those as of January 1, 2000. The boundaries shown on this map are for Census Bureau statistical data collection and tabulation purposes only; their depiction and description for statistical purposes does not constitute a determination of jurisdictional authority or rights of ownership or certification.

Source: U.S. Census Bureau, "FIPART" database (Census 2000) Projected, State-level, by Equal Area. Prepared by the Geography Division.

Scale: 1:97,000

US CENSUS BUREAU
Helping You Make Informed Decisions

