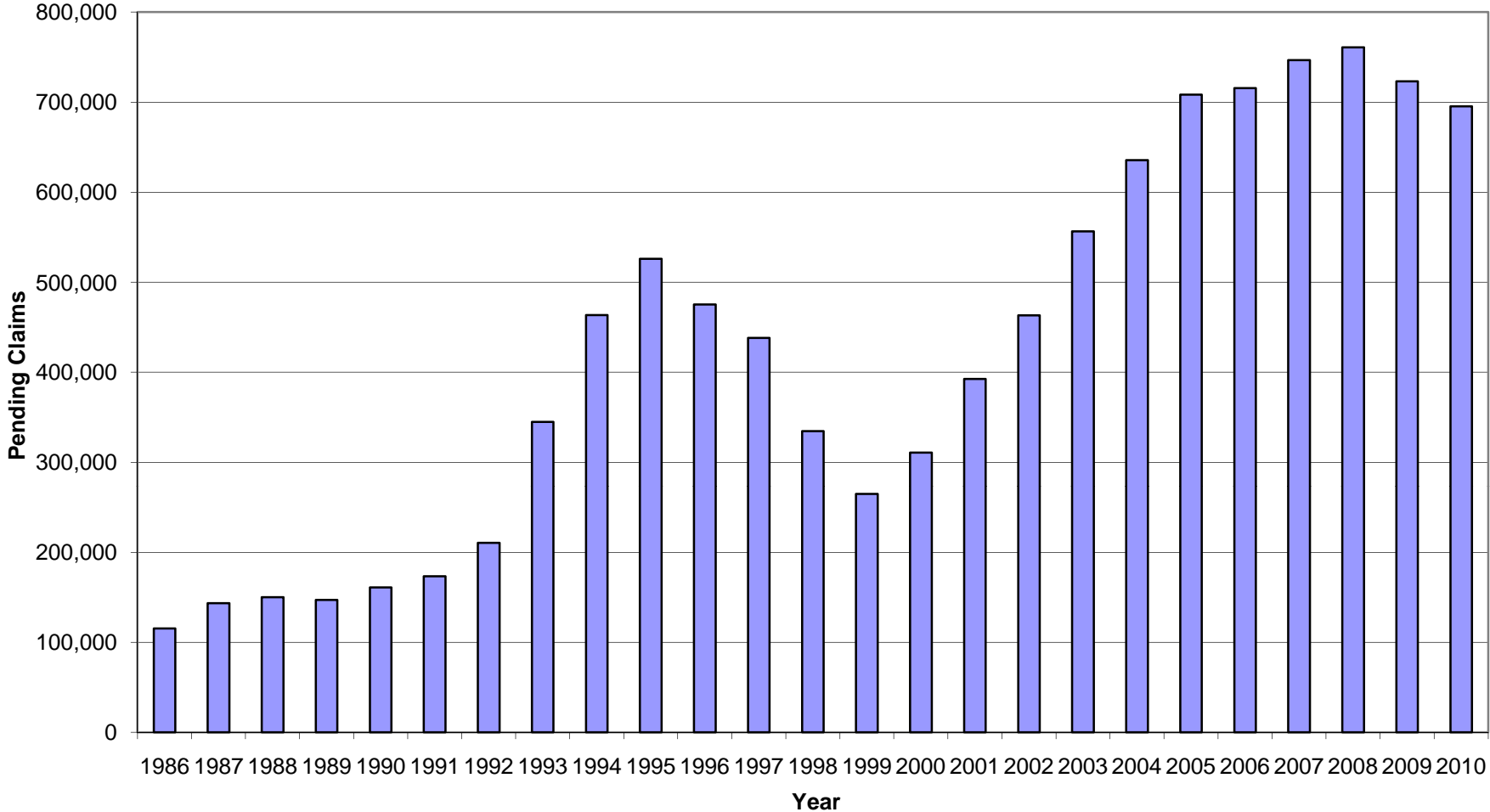


Pending Disability Claims at Social Security Hearing Offices Starting to Fall from Peak in 2008



Source: Data from the Social Security Administration. All data are Fiscal Years. FY 2010 data is through March.

Prepared by the staff of the Committee on Ways and Means, Sander M. Levin, Chairman
Earl Pomeroy, Chairman, Subcommittee on Social Security
April 15, 2010