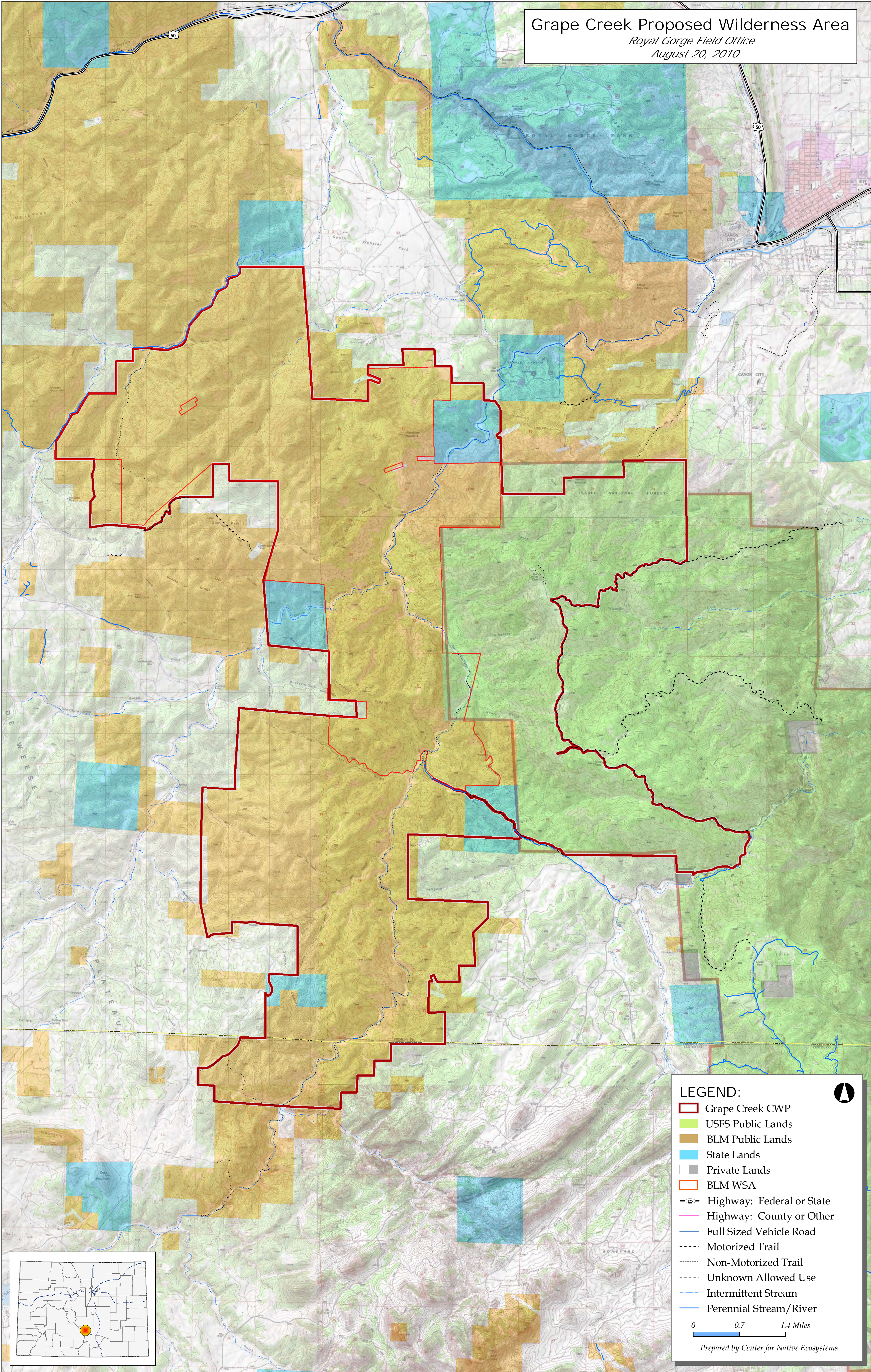


Grape Creek Proposed Wilderness Area
 Royal Gorge Field Office
 August 20, 2010



LEGEND:

- Grape Creek CWP
- USFS Public Lands
- BLM Public Lands
- State Lands
- Private Lands
- BLM WSA
- Highway: Federal or State
- Highway: County or Other
- Full Sized Vehicle Road
- Motorized Trail
- Non-Motorized Trail
- Unknown Allowed Use
- Intermittent Stream
- Perennial Stream/River

0 0.7 1.4 Miles

Prepared by Center for Native Ecosystems

