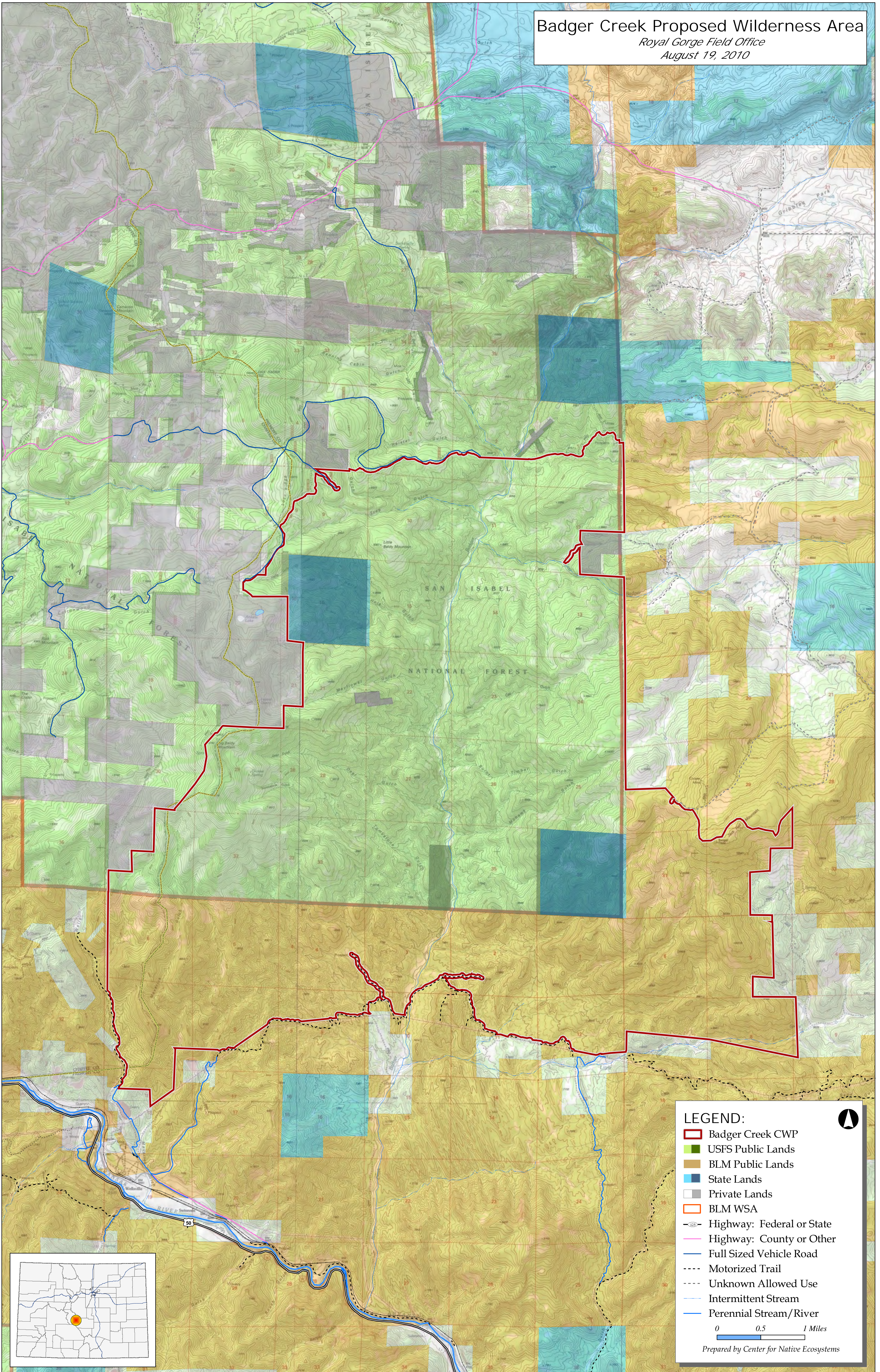


# Badger Creek Proposed Wilderness Area

Royal Gorge Field Office  
August 19, 2010



## LEGEND:

- Badger Creek CWP
- USFS Public Lands
- BLM Public Lands
- State Lands
- Private Lands
- BLM WSA
- Highway: Federal or State
- Highway: County or Other
- Full Sized Vehicle Road
- Motorized Trail
- Unknown Allowed Use
- Intermittent Stream
- Perennial Stream/River



0 0.5 1 Miles

Prepared by Center for Native Ecosystems

