

109th Congress of the United States

Texas - Congressional District 6

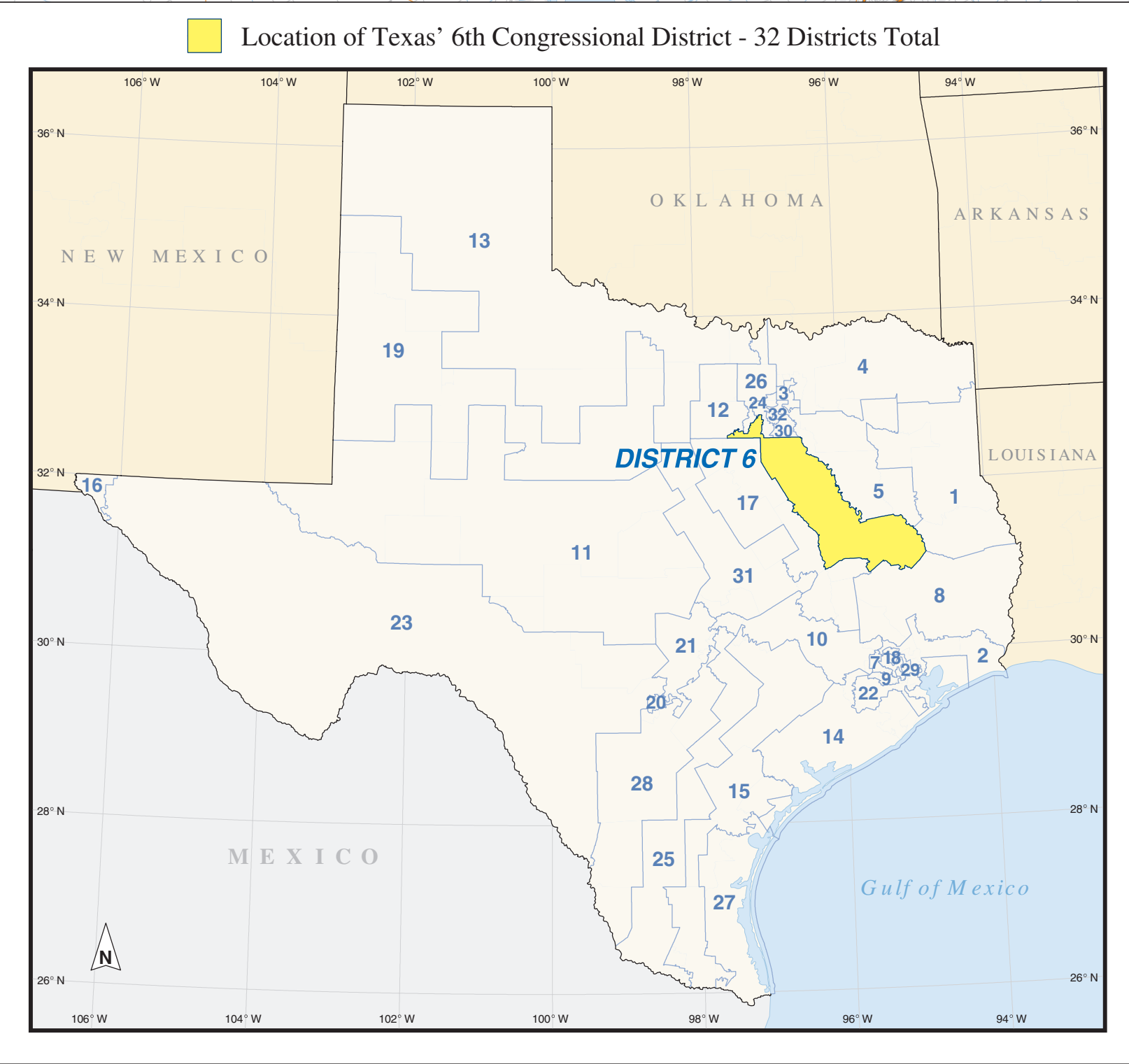
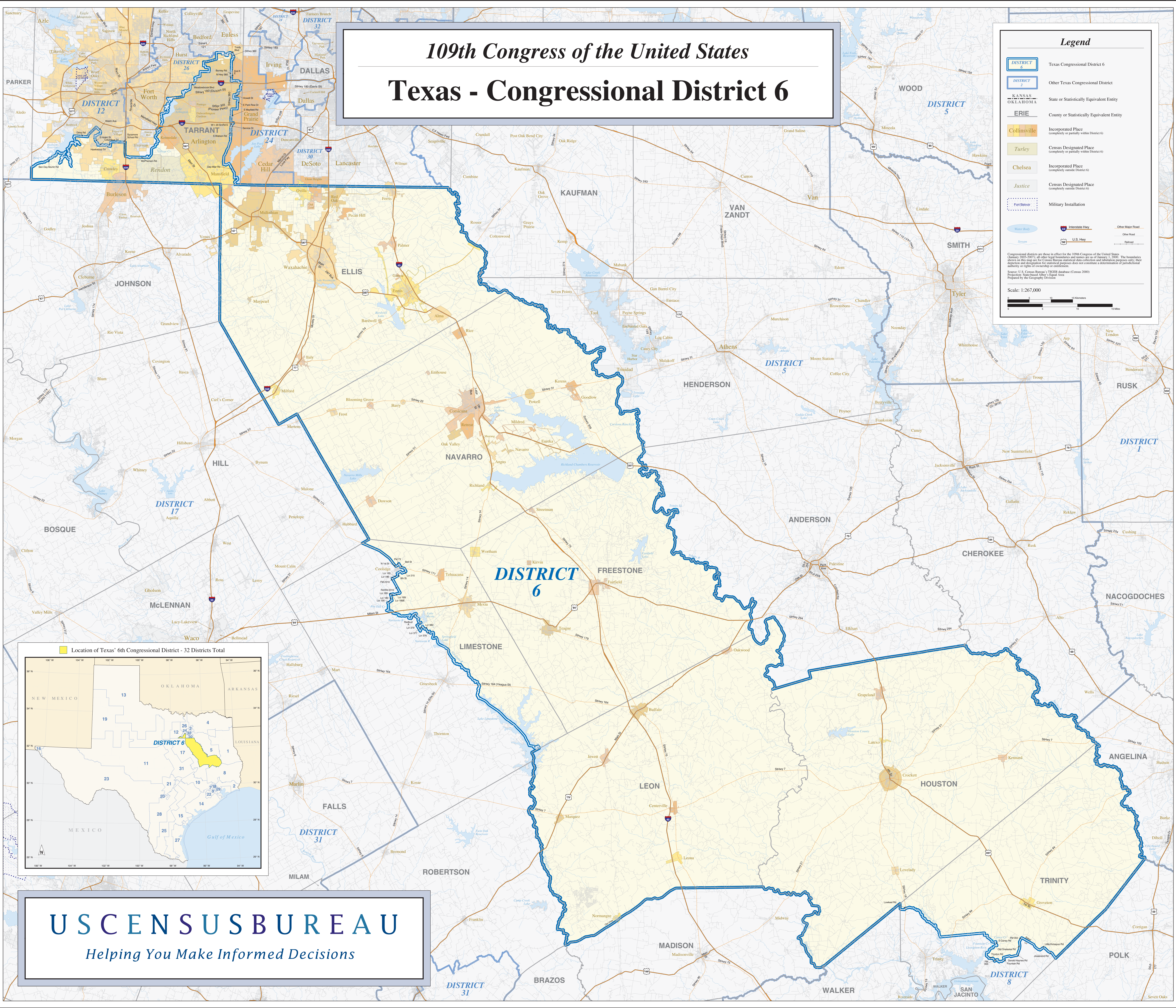
Legend

- DISTRICT 6 Texas Congressional District 6
- DISTRICT 2 Other Texas Congressional District
- KANSAS OKLAHOMA State or Statistically Equivalent Entity
- ERIE County or Statistically Equivalent Entity
- Collinsville Incorporated Place (completely or partially within District 6)
- Turley Census Designated Place (completely or partially within District 6)
- Chelsea Incorporated Place (completely outside District 6)
- Justice Census Designated Place (completely outside District 6)
- Fort Belvoir Military Installation
- Water Body Water Body
- Stream Stream
- Interstate Hwy
- U.S. Hwy
- Other Major Road
- Other Road
- Other Major Flood
- Flood

Congressional districts are those in effect for the 109th Congress of the United States (January 2005-2007) as of the last legal boundary and name change of January 1, 2005. The boundaries shown on this map are for Census Bureau statistical data collection and tabulation purposes only; their depiction and designation for statistical purposes does not constitute a determination of jurisdictional authority or rights of ownership or control.

Source: U.S. Census Bureau, TIGER/Line® Database (Census 2000)
Prepared by the Geography Division

Scale: 1:267,000



USCENSUSBUREAU
Helping You Make Informed Decisions