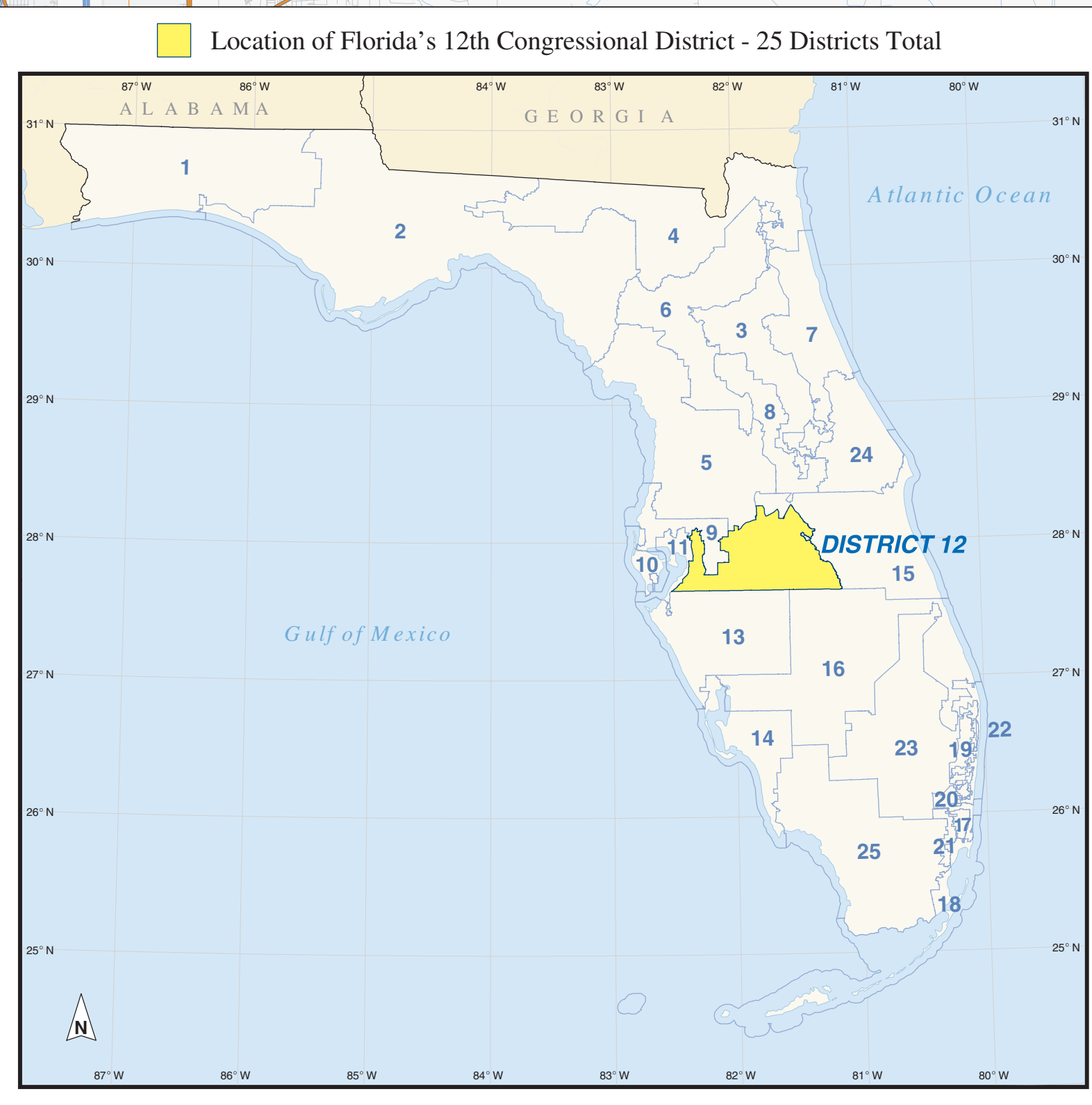
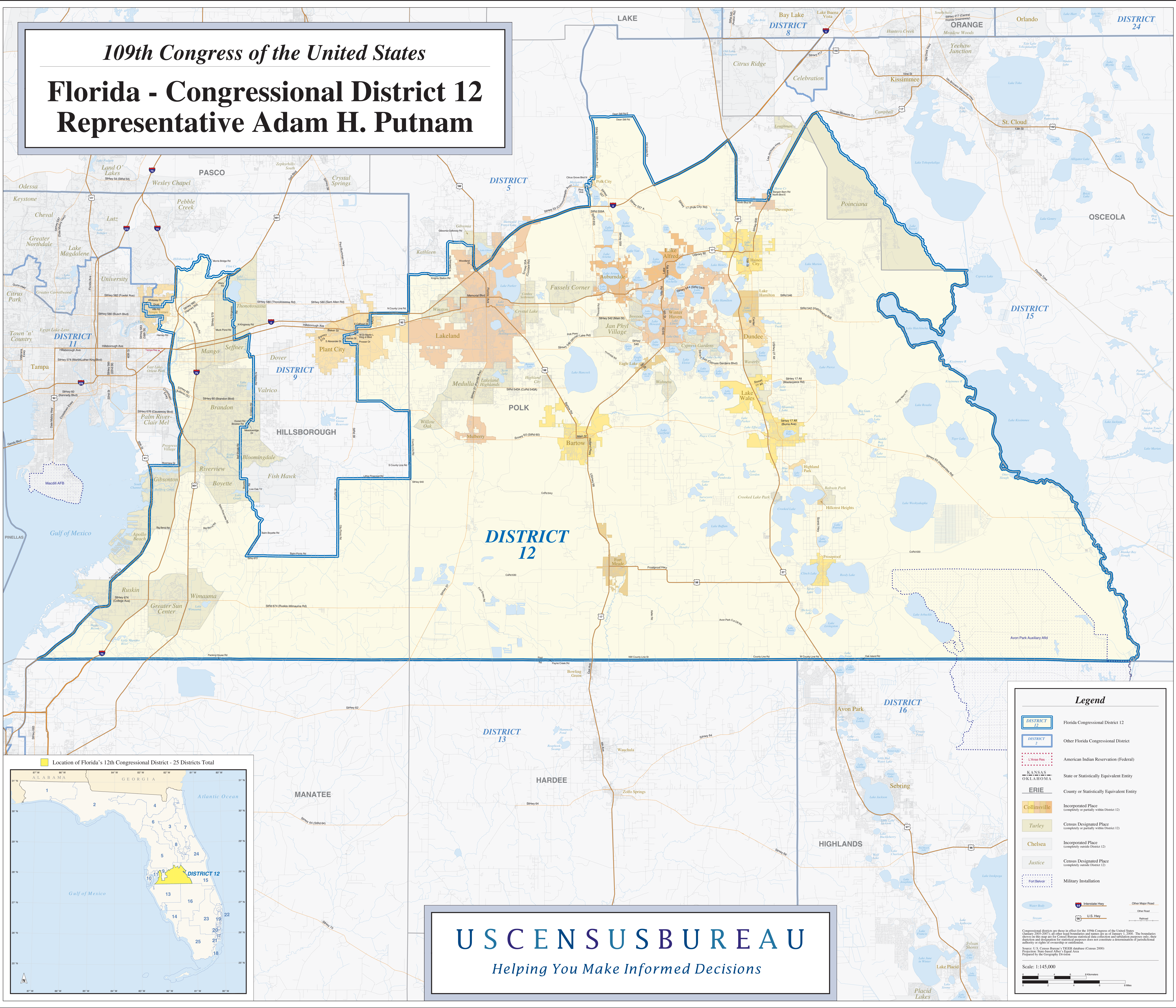


109th Congress of the United States  
**Florida - Congressional District 12**  
**Representative Adam H. Putnam**



**Legend**

- DISTRICT 12 Florida Congressional District 12
- DISTRICT Other Florida Congressional District
- AMERICAN INDIAN RESERVATION American Indian Reservation (Federal)
- STATE OR STATISTICALLY EQUIVALENT ENTITY State or Statistically Equivalent Entity
- KANSAS OKLAHOMA County or Statistically Equivalent Entity
- ERIE County or Statistically Equivalent Entity
- Collinsville Incorporated Place (completely or partially within District 12)
- Turley Census Designated Place (completely or partially within District 12)
- Chelsea Incorporated Place (completely outside District 12)
- Justice Census Designated Place (completely outside District 12)
- Fort Belvoir Military Installation
- Water Body Water Body
- Interstate Hwy Interstate Hwy
- U.S. Hwy U.S. Hwy
- Other Major Road Other Major Road
- Other Road Other Road
- Railroad Railroad

Congressional districts are shown in effect for the 109th Congress of the United States (January 2005-2007) as of the 2000 Census. The boundaries shown on this map are for Census Bureau statistical data collection and tabulation purposes only; they do not constitute a determination of jurisdictional authority or rights of ownership or entitlement.

Source: U.S. Census Bureau, 2000 Census of Population and Housing, Census 2000. Prepared by the Geography Division.

Scale: 1:145,000

**US CENSUS BUREAU**  
*Helping You Make Informed Decisions*