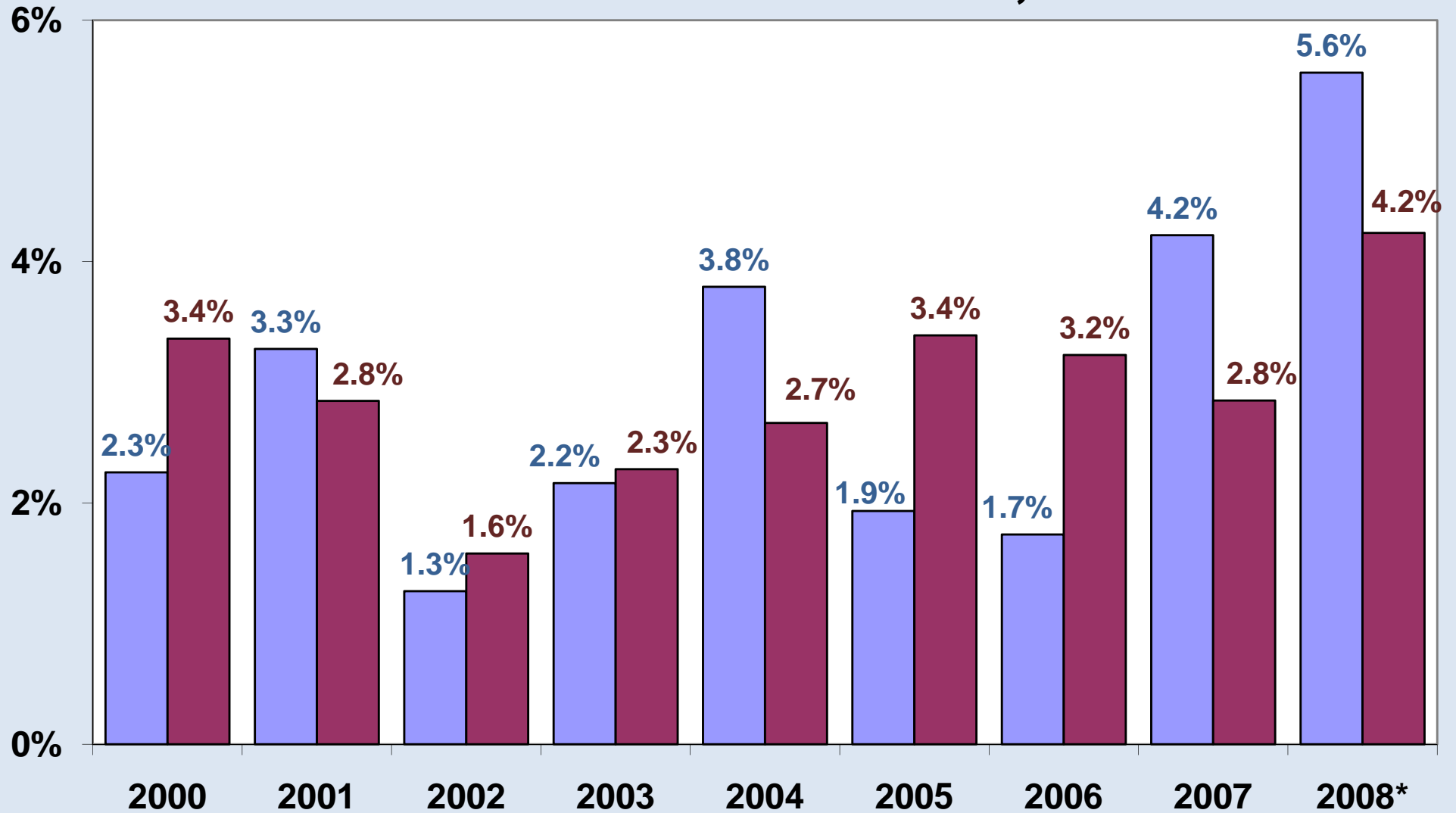


# CPI-U: Food at Home vs. All Items, 2000-08

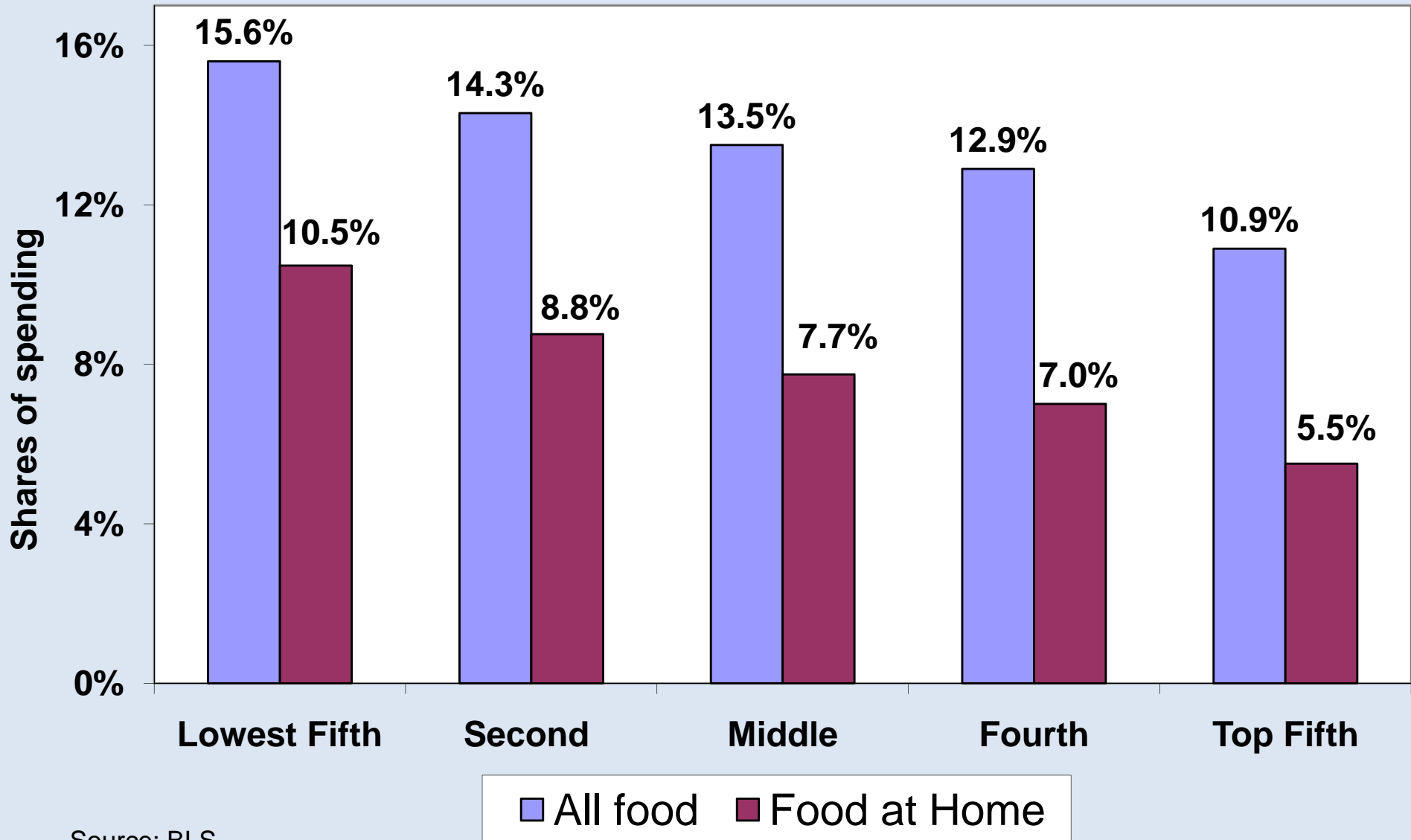


Source: BLS

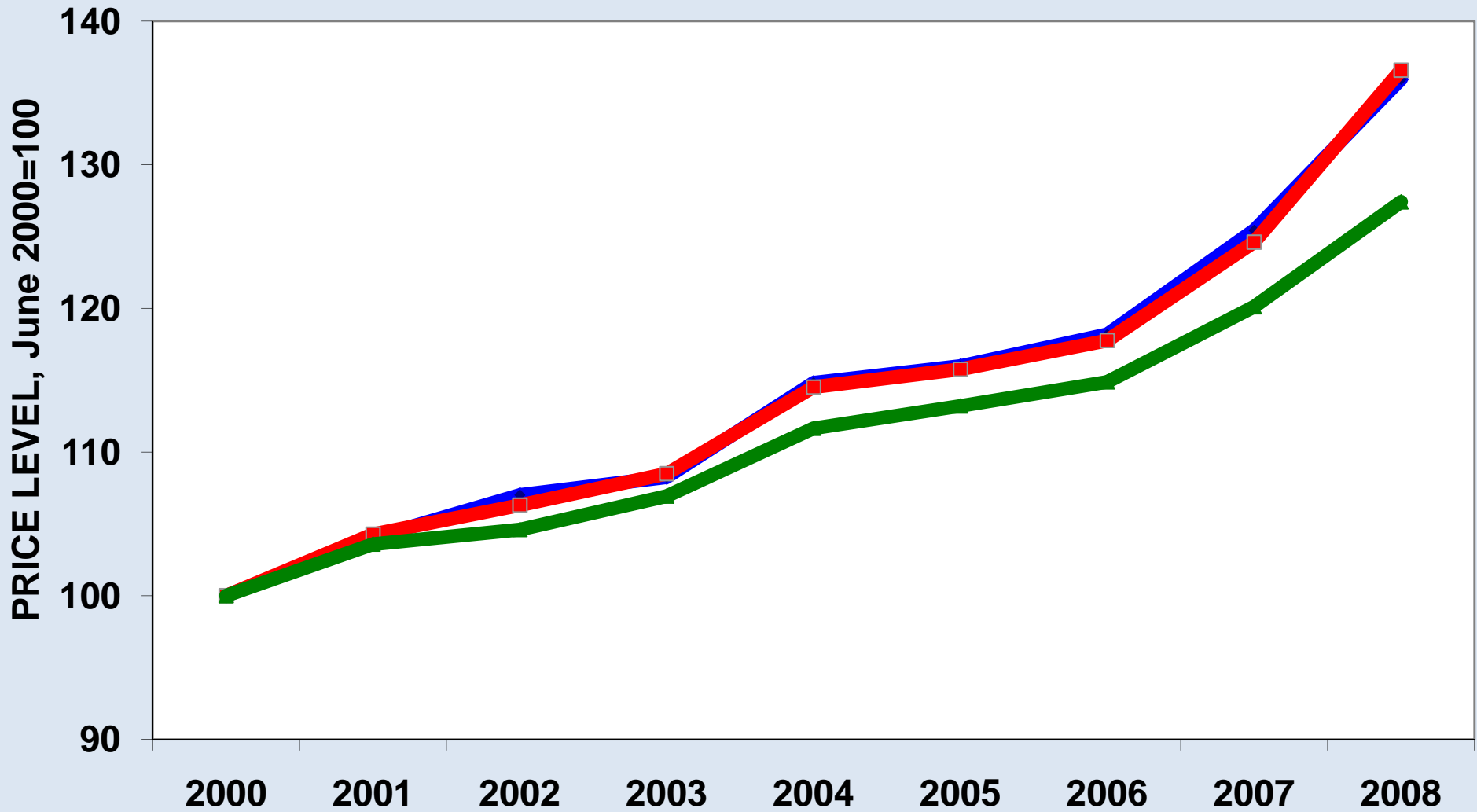
Food at Home

All Items

## Spending Shares of Food (All and at Home) by Fifth of Income, 2006



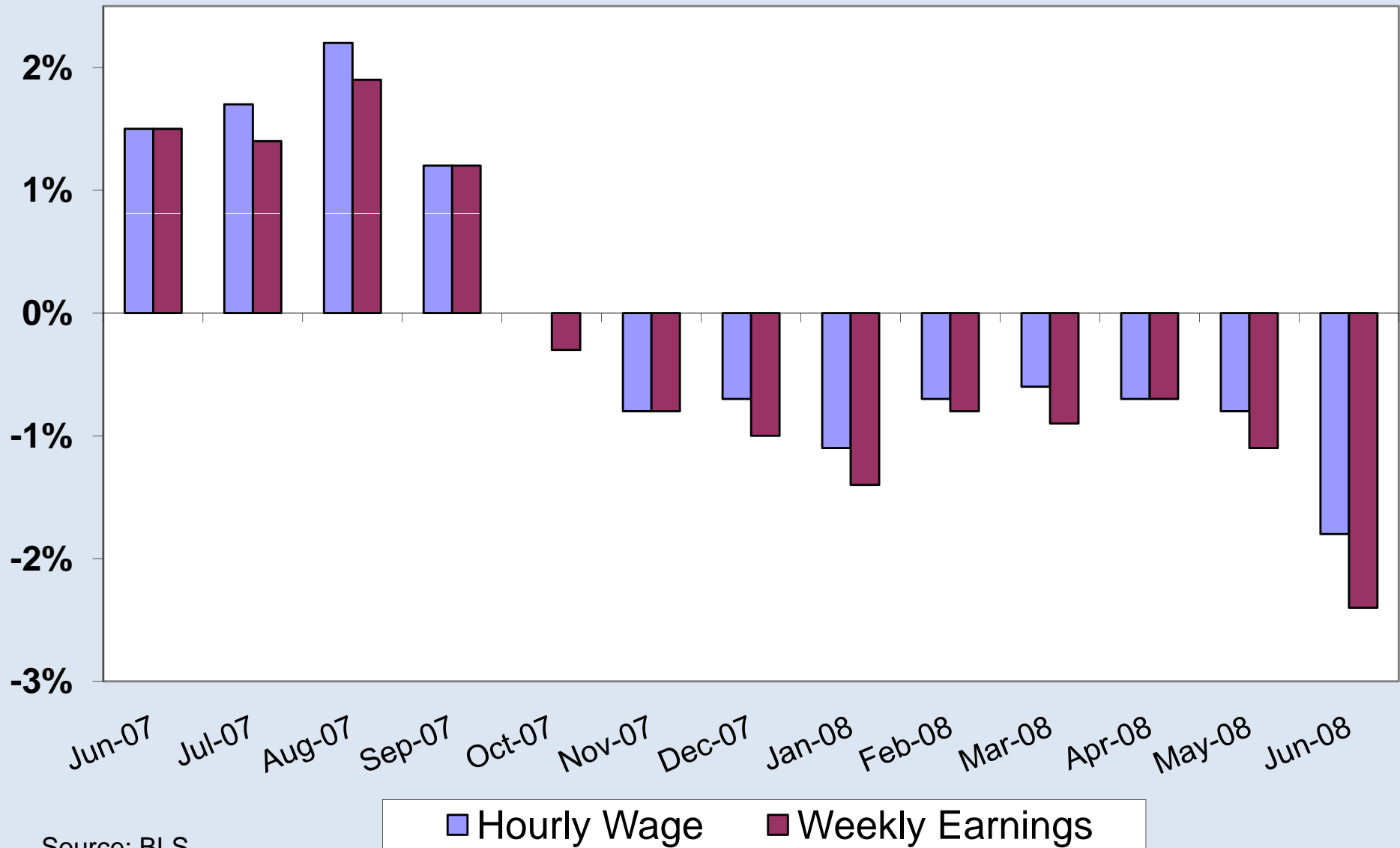
## 3 Measures of Food Price Growth: Thrifty, Low-Cost, & CPI Food at Home, 2000-08



Source: USDA and BLS.

◆ Thrifty    ■ Low-Cost    ▲ CPI-Food at Home

## Real Trends in Hourly and Weekly Earnings, Annual change by month, June 2007 to June 2008



## How Much Commodity Does an Hour's Wage Buy? 2003 vs. 2008

	<u>Gas</u>	<u>Milk</u>	<u>Apples</u>	<u>Flour</u>	<u>Rice</u>	<u>Bread</u>
<b>2003</b>	4.9 gal	2.9 gal	7.8 lbs	23.7 lbs	17.7 lbs	7.7 lbs
<b>2008</b>	2.4 gal	2.4 gal	7.1 lbs	17.0 lbs	13.1 lbs	6.5 lbs

Note: Data are from BLS and for the 2<sup>nd</sup> quarter of each year. Gas is unleaded gasoline.