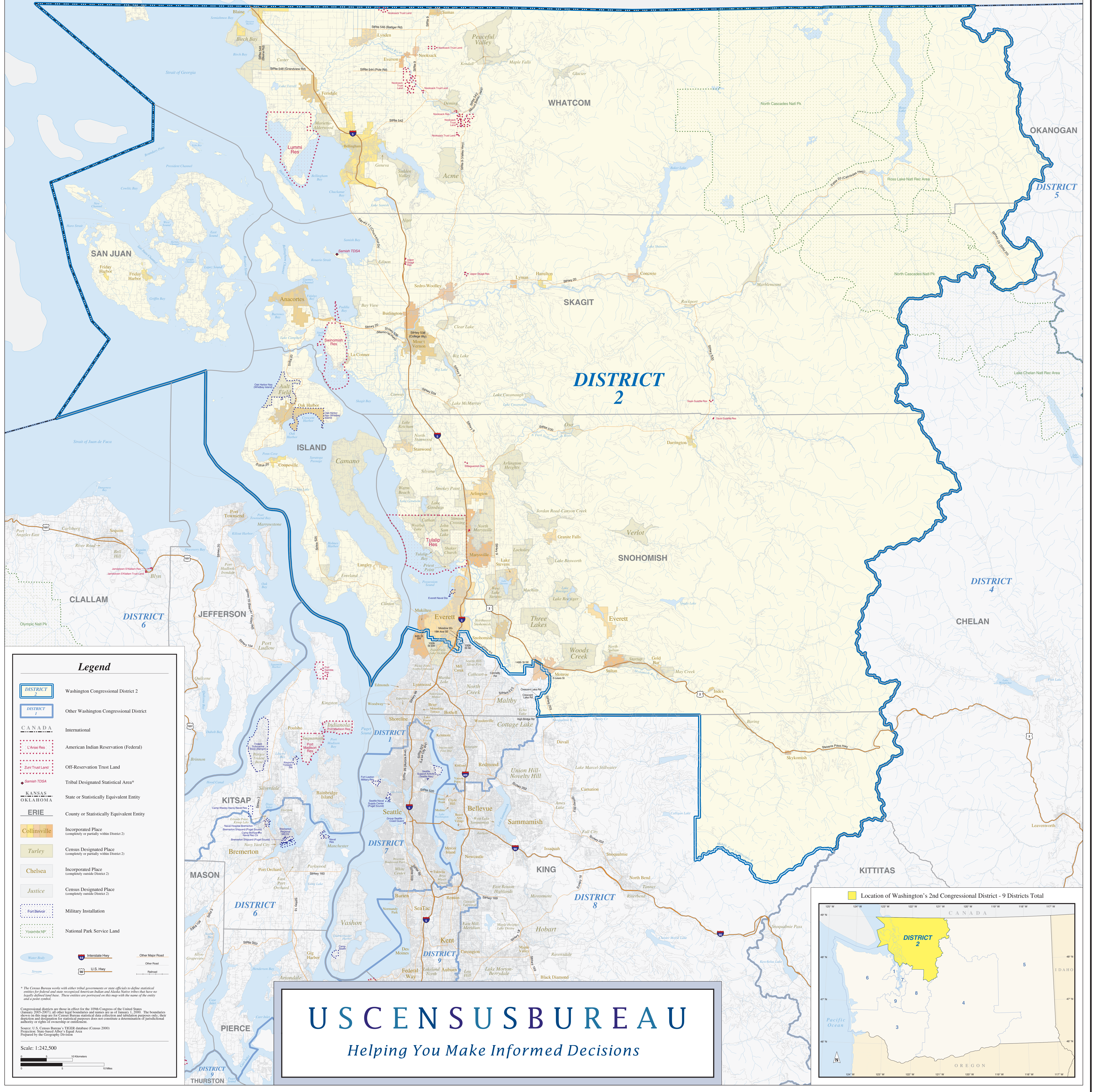


# 109th Congress of the United States

## Washington - Congressional District 2

### Representative Rick Larsen



#### Legend

- DISTRICT 2 Washington Congressional District 2
- DISTRICT 1 Other Washington Congressional District
- CANADA International
- Lummi Res American Indian Reservation (Federal)
- Zuni Trust Land Off-Reservation Trust Land
- ◆ Samish TDSA Tribal Designated Statistical Area\*
- KANSAS OKLAHOMA State or Statistically Equivalent Entity
- ERIE County or Statistically Equivalent Entity
- Collinsville Incorporated Place (completely or partially within District 2)
- Turley Census Designated Place (completely or partially within District 2)
- Chelsea Incorporated Place (completely outside District 2)
- Justice Census Designated Place (completely outside District 2)
- Fort Belvoir Military Installation
- Yosemite NP National Park Service Land
- Interstate Hwy
- Other Major Road
- Stream
- U.S. Hwy
- Railroad

\* The Census Bureau works with other federal governments or state officials to define statistical entities for federal and state purposes. American Indian and Alaska Native tribes that have not legally defined land base. These entities are portrayed on this map with the name of the entity and a light color.

Congressional districts are those in effect for the 109th Congress of the United States (January 2005-2007); all other legal boundaries and names are as of January 1, 2000. The boundaries shown on this map are for Census Bureau statistical data collection and tabulation purposes only; they do not constitute a determination of jurisdictional authority or rights of ownership or entitlement.

Source: U.S. Census Bureau's TIGER database (Census 2000) Products, State-based Thematic Areas Prepared by the Geography Division

Scale: 1:242,500

## US CENSUS BUREAU

Helping You Make Informed Decisions

