

# 109th Congress of the United States

## Pennsylvania - Congressional District 12

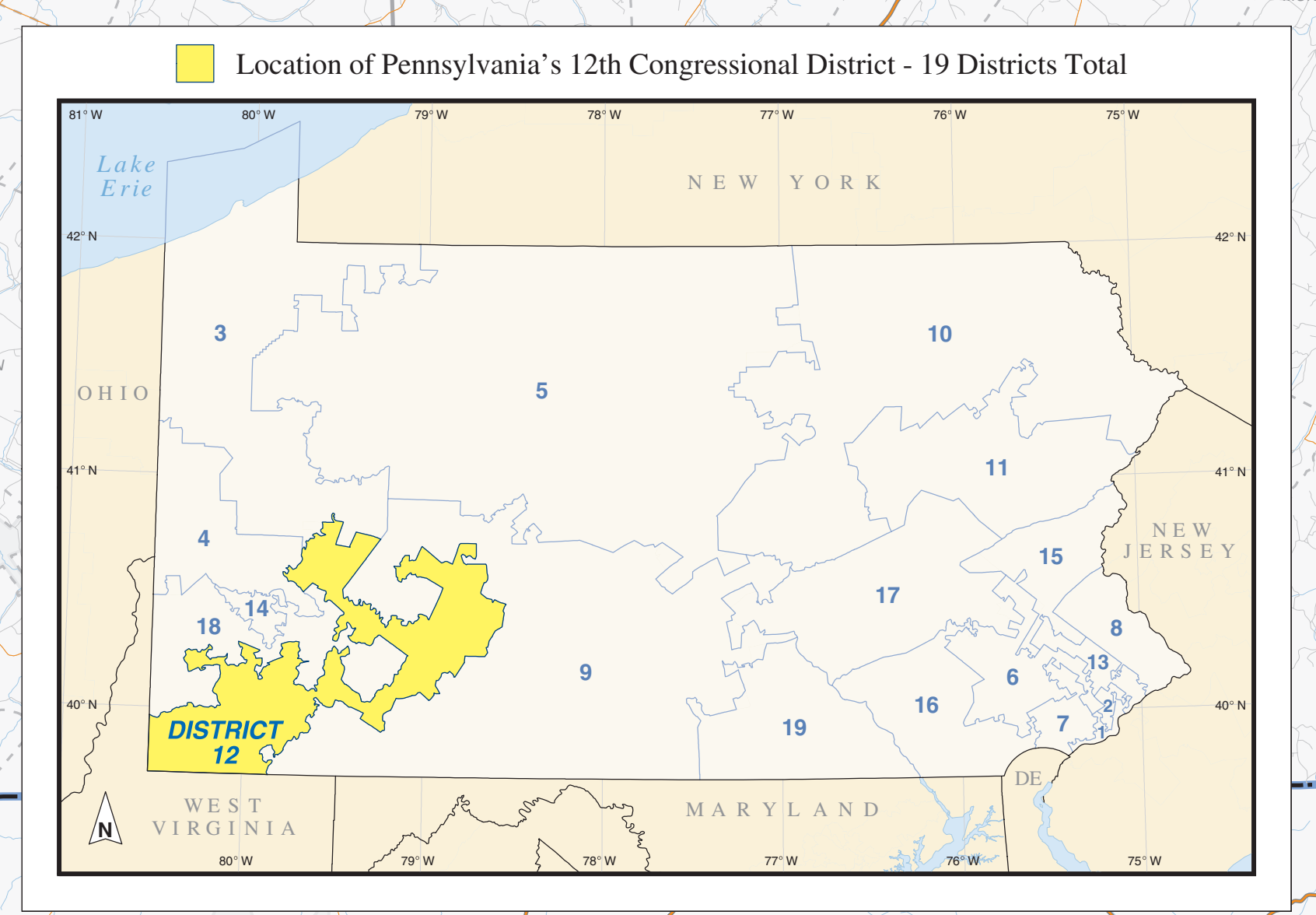
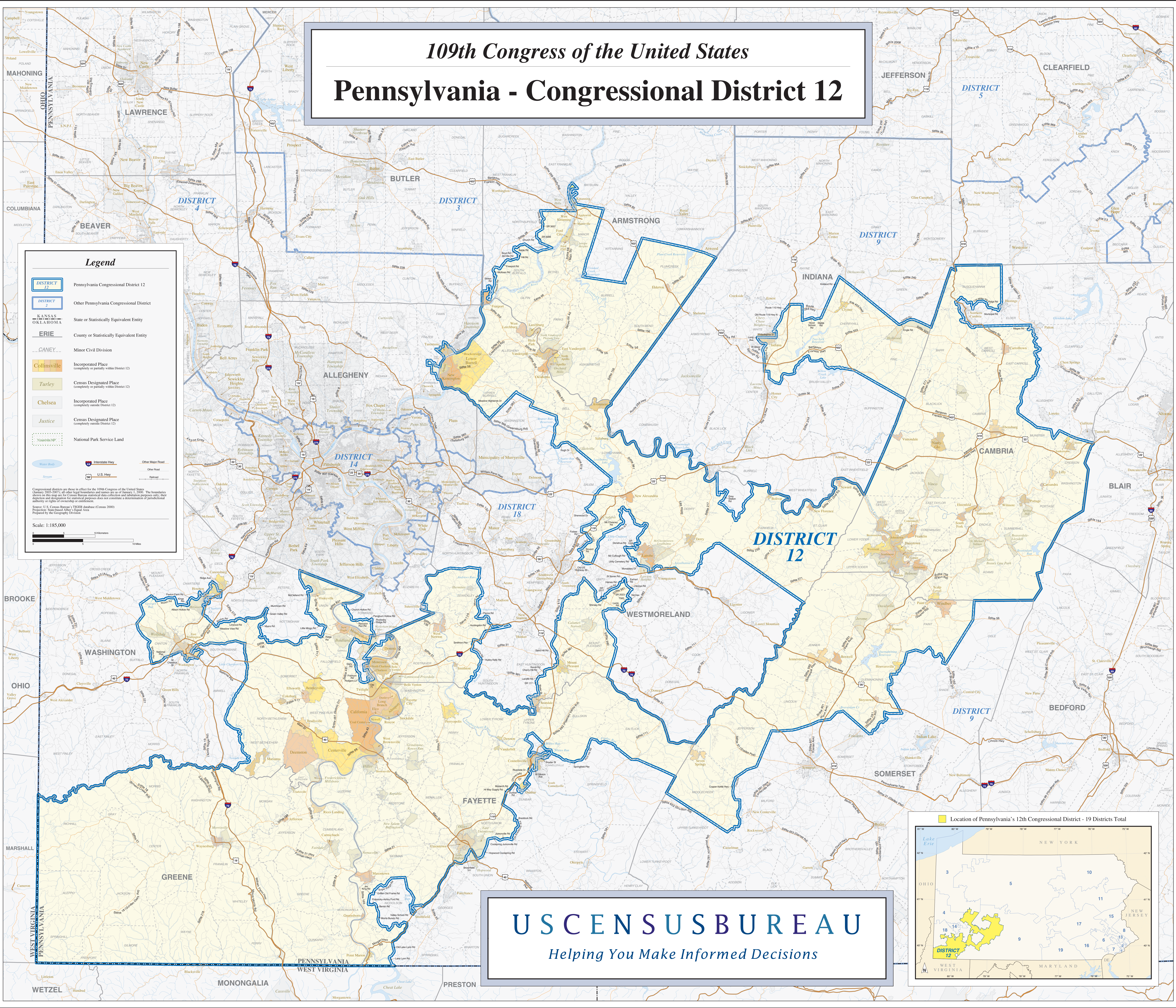
**Legend**

- DISTRICT 12 Pennsylvania Congressional District 12
- DISTRICT 2 Other Pennsylvania Congressional District
- KANSAS  
OKLAHOMA State or Statistically Equivalent Entity
- ERIE County or Statistically Equivalent Entity
- CANBY Minor Civil Division
- Collinsville Incorporated Place (completely or partially within District 12)
- Turley Census Designated Place (completely or partially within District 12)
- Chelsea Incorporated Place (completely outside District 12)
- Justice Census Designated Place (completely outside District 12)
- Vinton NP National Park Service Land

— Water Body    — Interstate Hwy    — Other Major Road  
— Stream    — U.S. Hwy    — Other Road

Congressional districts are those in effect for the 109th Congress of the United States (January 2005-2007); all other legal boundaries and names are as of January 1, 2000. The boundaries shown on this map are for Census tracts, statistical data collection and tabulation purposes only; these do not represent or constitute a determination of jurisdictional authority or other governmental or legal status, or any other specific rights or claims. Source: U.S. Census Bureau's TIGER database (Census 2000) Prepared by the Geography Division

Scale: 1:185,000



**USCENSUSBUREAU**  
*Helping You Make Informed Decisions*