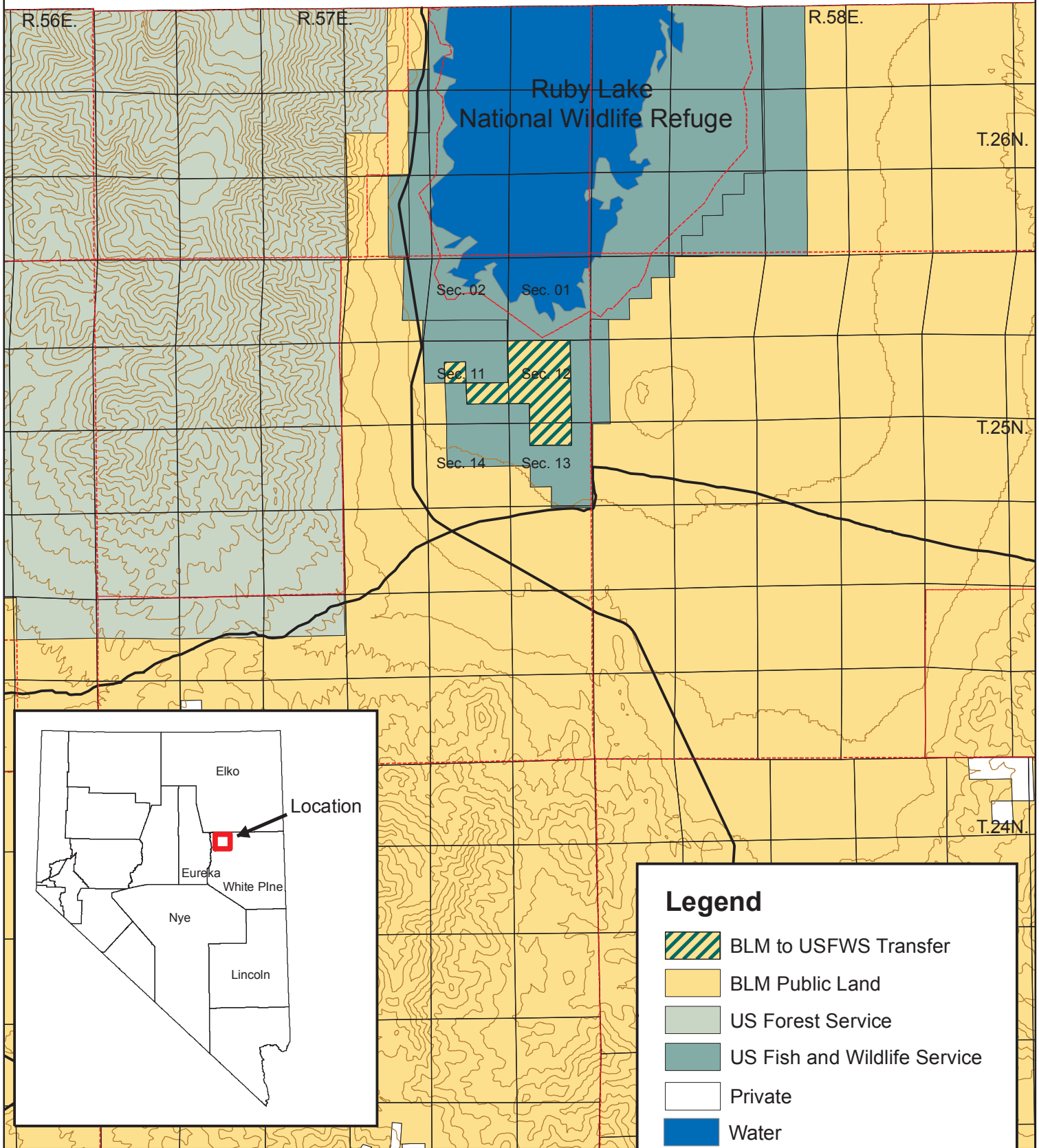










Ruby Lake Land Transfer

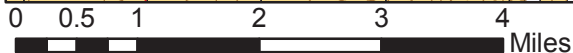
This map prepared at the request of
Senator John Ensign and Senator Harry Reid

July 10, 2006



Legend

-  BLM to USFWS Transfer
-  BLM Public Land
-  US Forest Service
-  US Fish and Wildlife Service
-  Private
-  Water



This map is intended to be printed at 8.5"x10"