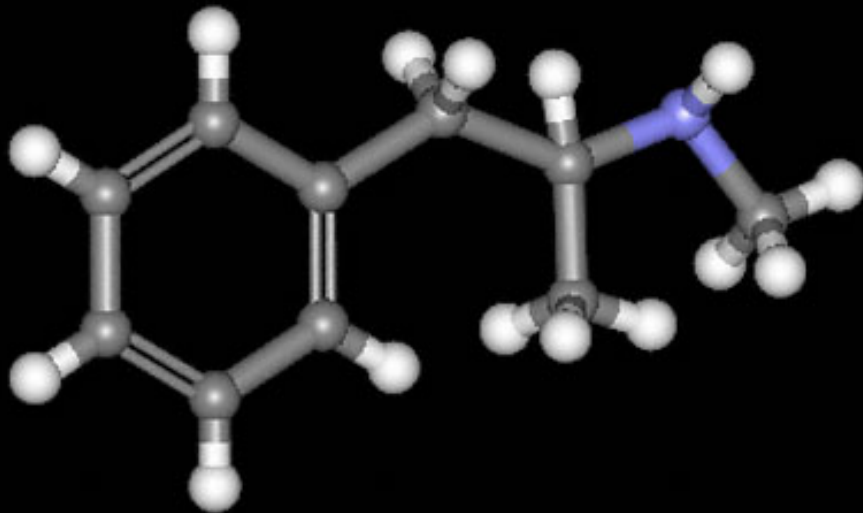


# Methamphetamine



Methamphetamine (C<sub>10</sub>H<sub>15</sub>N)



“One of rural  
America's  
greatest  
challenges.”

# *Worst Drug to Hit America*



“A ferociously addictive drug that is spreading... it’s hard to imagine overstating the magnitude of the meth problem.”

-U.S. Drug Czar Barry McCaffrey

# Stopping the Drug Epidemic

- \* 8% of Nebraska's budget, over \$291 million, is spent on substance abuse related costs
- \* 91% of that amount is spent on burdens to public programs through Medicaid and welfare programs
- \* 6% spent on regulation and compliance
- \* 3% spent on prevention

(These amounts do not include local and federal costs)

Source-National Center on Addiction and Substance Abuse study

# Nebraska Teenage Drinking Stats

- \* 9<sup>th</sup> for teenage binge drinking
- \* 3<sup>rd</sup> among teenagers who reported driving after drinking
- \* 2<sup>nd</sup> in teens who reported riding with a drinking driver
- \* Over 1/2 of Nebraska teens reported that they currently use alcohol - 6<sup>th</sup> in the Nation

# Nebraska Teenage Drinking

- \* 7 out of 10 teens who drink obtained alcohol from an adult
- \* 38% drank with an adult present
- \* Over 1/5 drank at home with the permission of a parent



# Meth Affects You

- \* Each meth addict commits several crimes each year to support the habit
- \* Meth treatment admissions doubled from 1997-2001
- \* The percentage of federal sentences for meth related drug convictions in Nebraska is five times the national average



# How Will You Protect Your Children?

**Among 30 children killed violently in NE since 1998:**

- The killers of 17 of these children had significant problems with abuse of alcohol or other drugs.
- Eight had a history of using meth.
- Three had used meth within 24 hours of killing the child.

# Ingredients in Meth

- \* Over-the-counter drugs containing pseudoephedrine
- \* Iodine
- \* Ammonia
- \* Starter fluid or de-icer
- \* Drain cleaner/rubbing alcohol
- \* Lithium batteries



# History of Meth

- \* First created in Germany in 1887
- \* Used widely during WWII by the Nazi and Japanese armies
- \* Japanese kamikaze pilots were documented to be high on meth
- \* Major challenge in post war Japan
- \* Biker gangs in California after WWII began to distribute meth

# Commonly Known As

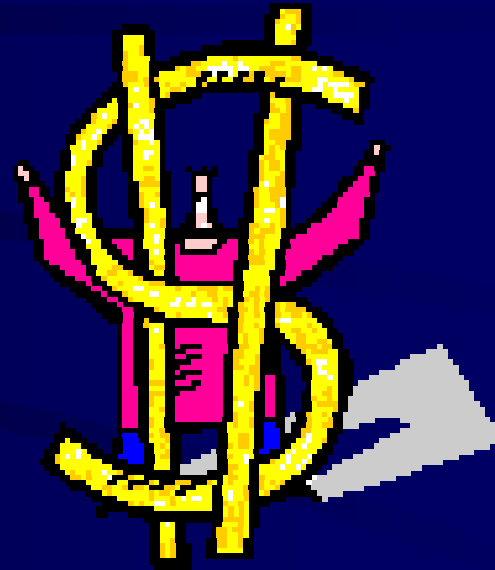
- \* Speed
- \* Chalk
- \* Crystal
- \* Crank
- \* Glass

# How Much Does Meth Cost?

“The price of meth has decreased so dramatically that it’s easily within the reach of young children.”

-Detective Ron Gardner

~Today an eight ball of meth costing approximately \$40 can get 15 people high. To users this is a bargain compared to expensive designer drugs like cocaine.



# What are Signs of a Meth Lab?

- What to look for
  - Chemicals
  - Ammonia
  - Containers
  - Cooking Pots
- Smell
  - Ammonia
  - Ether

# Environmental Effects of Meth

- \* Meth production leaves behind 5-6 lbs of toxic waste per 1 lb of meth produced
- \* Toxic byproducts contaminate sites where meth is produced posing serious health and environmental hazards to those nearby
- \* The average cost to clean up one meth lab often exceeds \$4,000



# What Meth Looks Like

- Typically an odorless powder that dissolves quickly in water
- Another form of meth is clear chunky crystals referred to as crystal meth or ice
- May be in the form of small brightly colored tablets, referred to as YABA

# What Meth Looks Like



Source: NIDA Research Report –1998

# How is Meth Used?

- \* Injection
- \* Snorting
- \* Smoking
- \* Orally



The Nose



# **What are the Consequences of Meth Use?**

## Behavior Changes

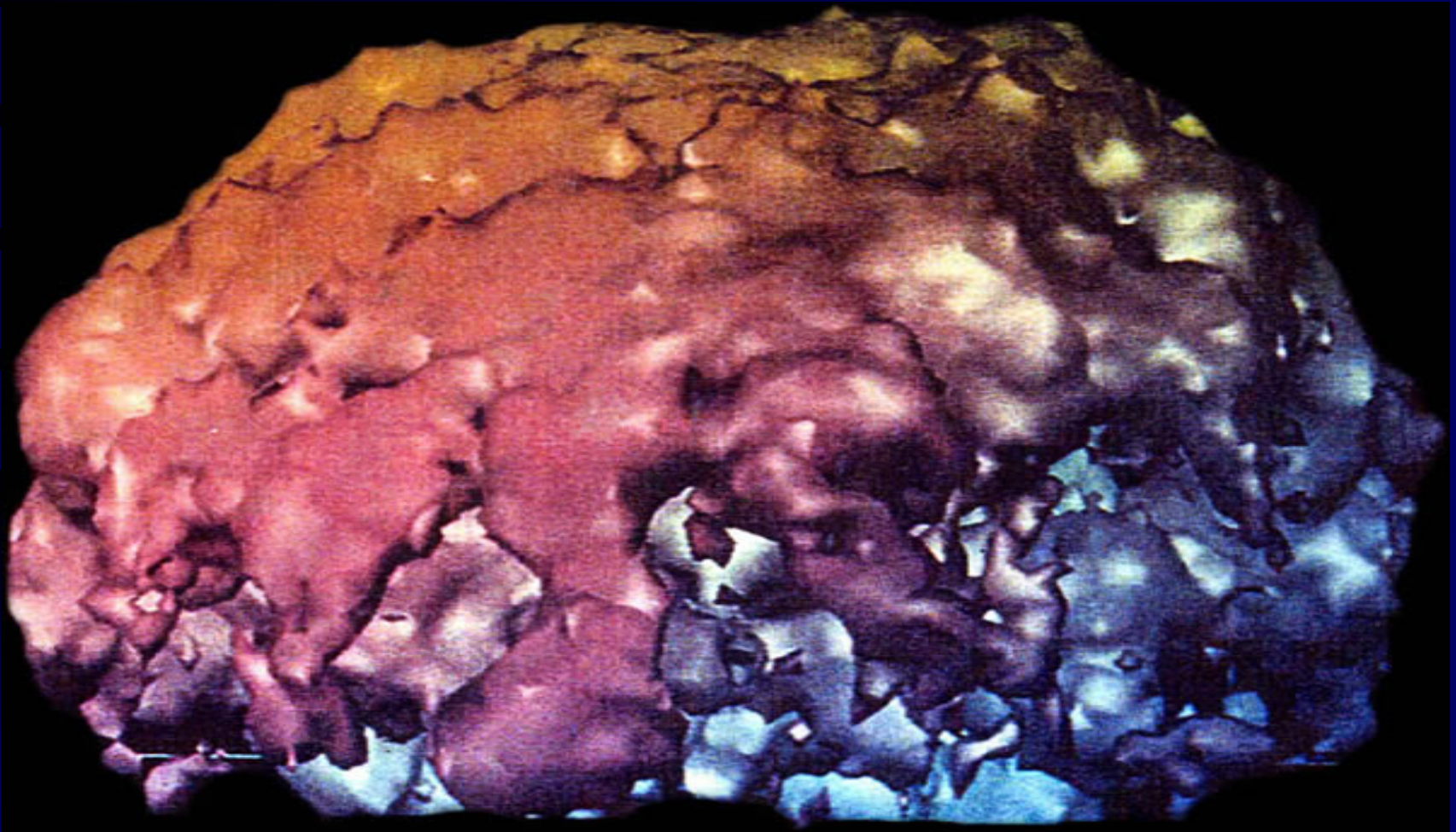
- Psychotic behavior
- Paranoia
- Aggression
- Anxiety
- Fatigue
- Depression
- Delusions
- Mood Swings
- Confusion
- Insomnia
- Hallucinations

## Health Changes

- Stroke
- Brain damage, similar to Alzheimer's disease
- Weight loss
- Death

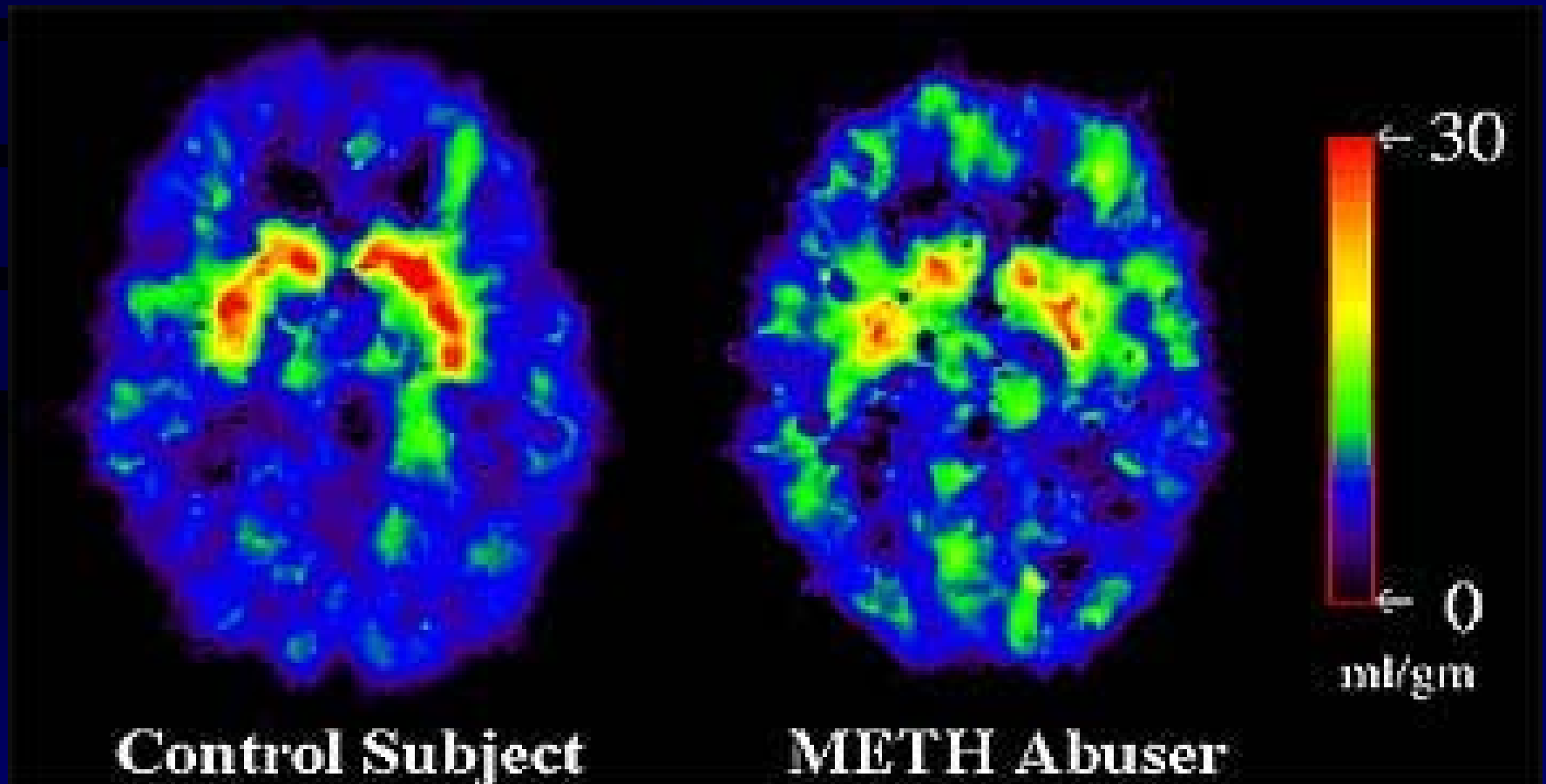
# Effects of Meth on the Brain

Dead spots in brain tissue appear to be brown mush



Researchers have reported that as much as 50% of the dopamine-producing cells in the brain can be damaged after prolonged exposure to relatively low levels of methamphetamine.

**Light-colored spots on brain scan show areas of dead tissue similar to the brain of an Alzheimer's patient, indicating a "Swiss Cheese" brain incapable of normal function**



# Effects of Meth on Teeth

## Your teeth on Meth



A 23 year old male's teeth and gums after 3+ years of Meth use.

## Facts about your teeth on Meth

- Extremely painful teeth & gums
- Bad taste from infection and nasty smell
- Infected teeth cause an unhealthy body
- Lack of sleep due to painful teeth
- Feel bad about yourself
- Unable to eat or chew many solid foods
- Jawbone loss
- Gum disease
- Costs big bucks to restore or replace teeth
- Rapid decay of teeth
- Loss of teeth



What's left from a Meth user after 3 years of Meth use.

## Meth eats you

Meth is a powerfully addictive drug that "eats" your body from the inside out. For a meth user, by the time the teeth look like this,

*brain cells have been "eaten" and permanently damaged.*

As meth flows through the blood to the heart, muscles, bones and teeth,

*it eats cells deposits toxins and poisons and destroys healthy tissues.*

## What happens after they pull the Meth eaten teeth?



## So you think dentures are the solution?

When teeth are pulled, the jawbone will start to slowly shrink over the years. Dentures sit on the bone ridge. The *disadvantage* of getting a denture at a young age, like 23 years old, is by the time you're 60 your bone ridge will have shrunk beyond the point of wearing a denture functionally, thus leaving you a *denture cripple*.

## What do you know about teeth and dentures?

Answer the following questions true or false

Your blood flows through your teeth.

When your blood needs calcium it first will take it from the jawbone.

Natural teeth chew with 150lbs of pressure.

Gum tissue for dentures can only support 5 to 25lbs of pressure.

With dentures you cannot bite or chew with your front teeth.

Dentures need to be replaced every 5 years.

Dentures only function at 10% of the efficiency of your natural teeth.

If you have all your teeth pulled then you may instantly look at least 10 years older.

If you answered true to all the above you are 100% correct.



**10 Years of Meth Use**



# Effects of Meth (Before)



Source-Nebraska State Patrol



# Effects of Meth (After)



Source-Nebraska State Patrol

# Meth Causes

- ~ Increased activity
- ~ Decreased appetite
- ~ A distorted sense of well-being
- ~ Effects that can last 6 to 8 hours

# If you suspect a meth lab

- \* Call the police.
- \* Do not attempt to stop the chemical reaction.
- \* Do not turn any electrical switches. This could trigger an explosion.



# Methamphetamine Related Anhydrous Theft



Source-Nebraska State Patrol

# Methamphetamine Lab



Source-Nebraska State Patrol

# Dismantling a Methamphetamine Lab



Source-California Department of Justice

# Hidden Danger

## ~Mobile Manufacturing~

- Meth lab operators are now discarding waste materials in ditches and other remote areas
- Leaders of scouts, 4-H, church organizations, and Adopt-A-Highway groups should be made aware of potential dangers



**“Even in the state’s tightest-knit rural areas. Living in a place where everyone knows everyone else doesn’t make fighting meth easier.”**

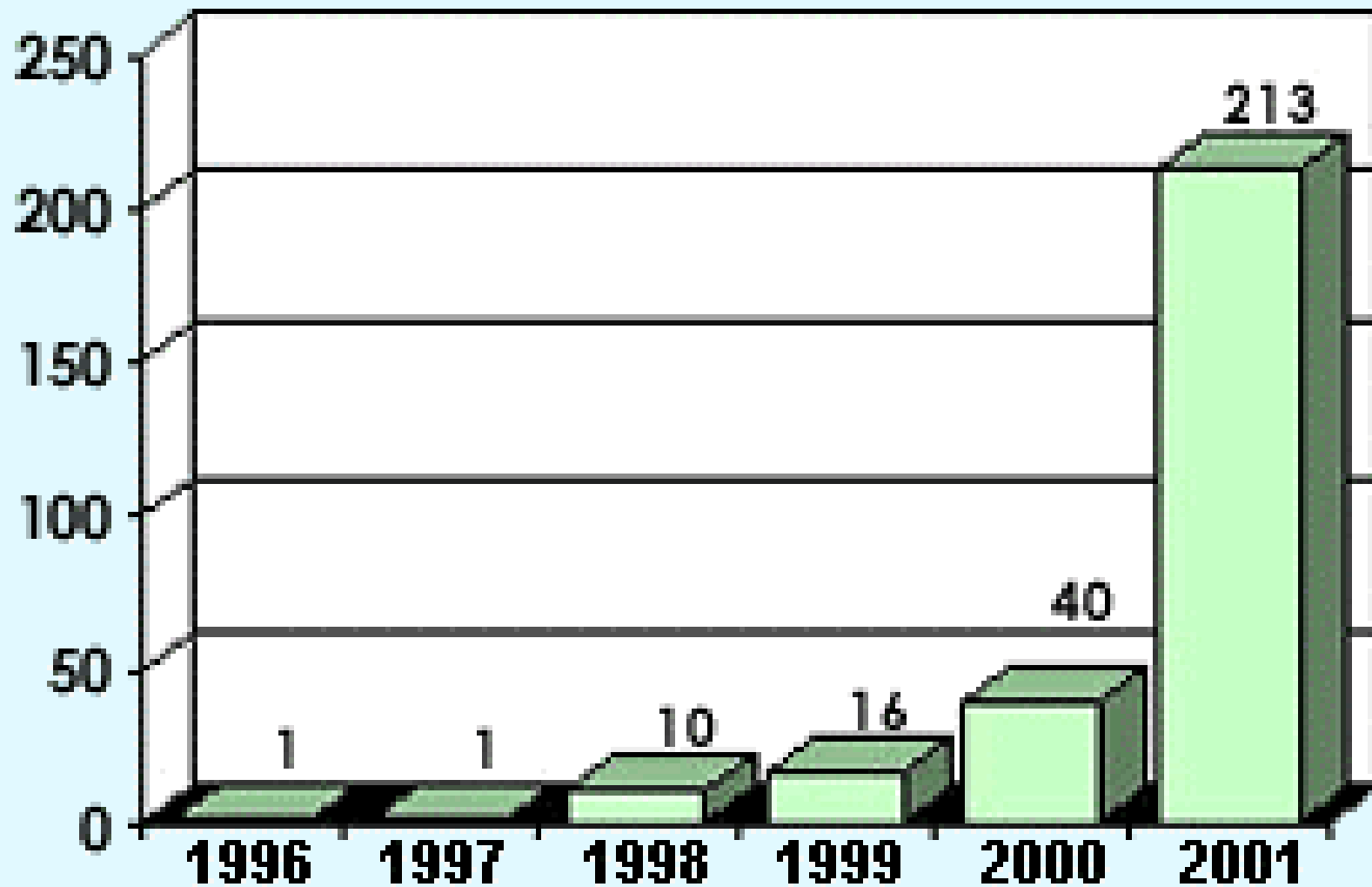
**-Keith County Sheriff, Earl D. Schenck Sr.**



# It is happening here

- Feb. 27, 2004: Nebraska State Patrol reports busting a meth lab in a trailer house in downtown Columbus
- May 22, 2004: *The North Platte Telegraph* reported two businessmen pleaded guilty to drug charges involving meth
- June 17, 2004: *The Lincoln Journal Star* announced that a woman was charged with the death of her toddler after reportedly smoking meth and leaving him unattended for 3 days
- June 24, 2004: *The Omaha World Herald* reported 7 people arrested with 4 pounds of meth and 3 guns

# Methamphetamine Lab Seizures --Nebraska--



as of 4-15-02

Source: EPIC/CLSS

Source-National Center on Addiction and Substance Abuse study

# How Can I Help?

- Parents
  - Be involved and watch for signs
    - Dropping grades
    - Switching friends
    - Missing money
    - Withdrawal
- Do you drink, smoke, or use other drugs?  
Remember, your example speaks louder than words.



# Current Efforts

- Future Program: Meth Watch
  - A public-private partnership between law enforcement, state officials, and the retail community.
  - Meth Watch trains business employees about suspicious sale/theft of common household products used to manufacture of meth.
  - Meth Watch program is in action in surrounding states but is currently not available in Nebraska.

# Current Efforts

- Anhydrous ammonia, a nitrogen fertilizer used in farming, is a key ingredient in meth production
  - Iowa State University is in the process of developing an additive to anhydrous ammonia that would disrupt the process of manufacturing meth.

# Contact Information for Congressman Tom Osborne

Website: [www.house.gov/osborne](http://www.house.gov/osborne)

E-mail: [www.house.gov/writerep](mailto:www.house.gov/writerep)

- Washington Office  
507 Cannon HOB  
Washington, D.C. 20515  
(202) 225-6435
- Grand Island Office  
819 Diers Ave. Suite 3  
Grand Island, NE 68803  
(308) 381-5555
- Scottsbluff Office  
21 East 20<sup>th</sup> Street  
Scottsbluff, NE 69361  
(308) 632-3333
- Kearney Office  
1910 University Drive  
Room 212  
Kearney, NE 68849  
(308) 236-1330
- McCook Office  
203 West 1<sup>st</sup> Street  
McCook, NE 69001  
(308) 345-3328